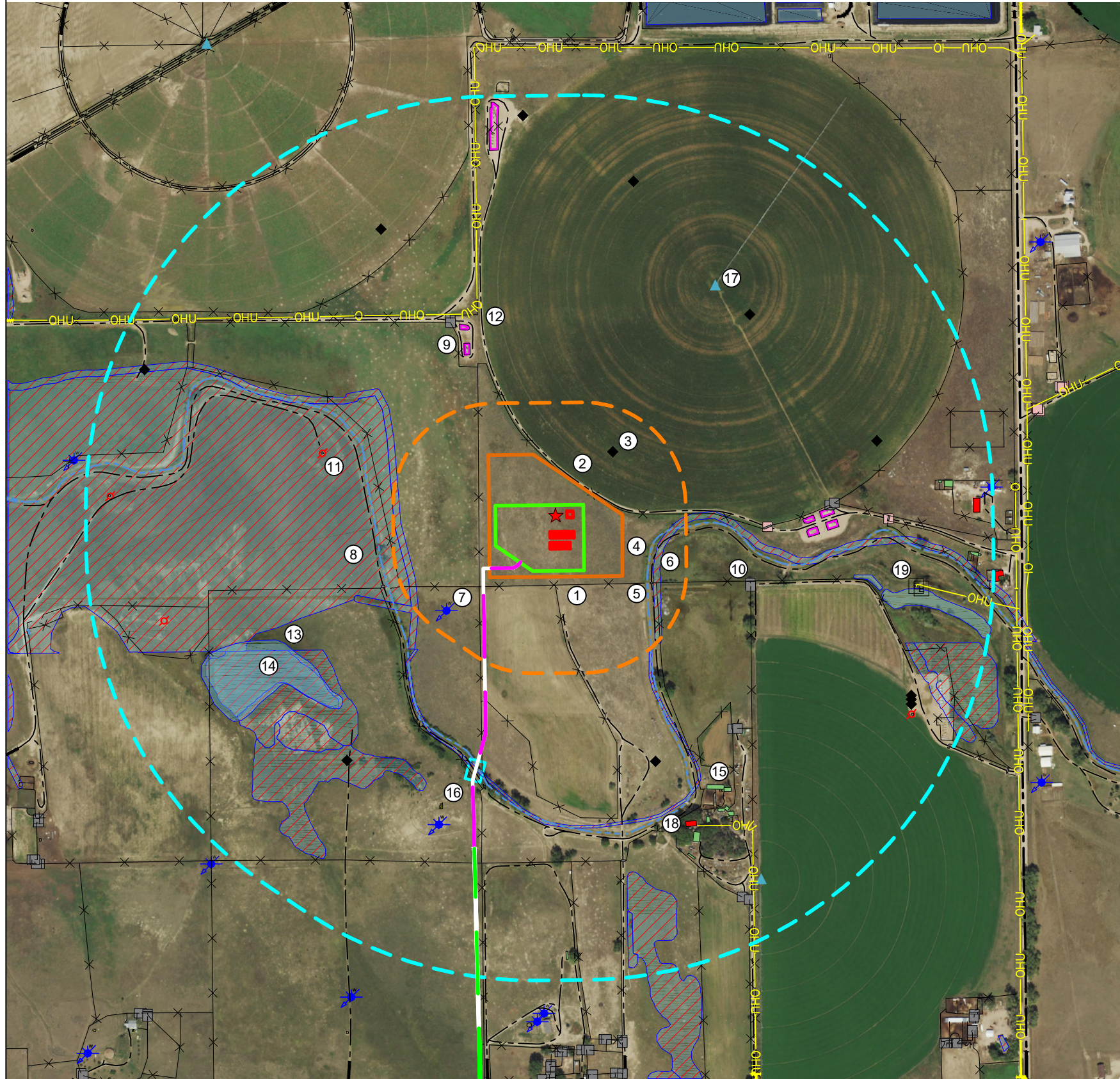
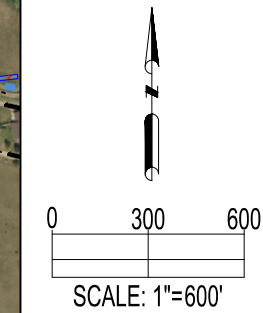


# A12-07 FACILITY LOCATION DRAWING



**IMPROVEMENTS:**  
(AS MEASURED FROM THE PROPOSED WORKING PAD SURFACE)

|   |   |
|---|---|
| 1. FENCES:  | ±68' S, ±70' S, ±70' NE, ±80' W, ±210' SW, ±342' SE, ±498' SW, ±594' SW, ±675' SW, ±682' NW, ±748' NW, ±814' SE, ±877' NW, ±917' E, ±937' NW, ±962' SE, ±973' NW, ±978' SE, ±1070' E, ±1076' SE, ±1089' E, ±1181' E, ±1153' E, ±1214' SW, ±1226' E, ±1261' SE, ±1274' SW, ±1274' NW, ±1304' SE, ±1380' SE, ±1387' SE, ±1422' S, ±1429' S, ±1435' SW, ±1441' SE, ±1448' S, ±1459' NW, ±1460' NE, ±1465' SW, ±1483' E, ±1541' SE, ±1622' NW, ±1650' NW, ±1675' NW, ±1708' SE, ±1709' SE, ±1719' E, ±1735' N, ±1746' SE, ±1799' SE, ±1810' E, ±1815' NE, ±1866' SE, ±1873' E, ±1878' W, ±1891' N, ±1915' SE, ±1967' E, ±1977' SE |
| 2. PRIVATE ROADS:                                   | ±78' NE, ±214' S, ±331' E, ±581' W, ±732' N, ±840' S, ±843' E, ±907' W, ±958' NW, ±1050' SE, ±1140' SW, ±1198' E, ±1251' S, ±1432' S, ±1444' SE, ±1850' NW, ±1888' S, ±1948' NW, ±1961' E   |
| 3. EXISTING OIL AND GAS WELLS:                      | ±296' NE, ±996' SE, ±1235' NE, ±1274' SW, ±1461' NW, ±1468' E, ±1598' NE, ±1711' SE, ±1718' SE, ±1727' SE, ±1837' NW, ±1904' N  |
| 4. GREELEY NUMBER 2 CANAL:                          | ±310' E   |
| 5. CATTLEGUARDS:                                    | ±328' E, ±576' W, ±879' E, ±1073' S, ±1425' S, ±1484' E, ±1974' SE  |
| 6. WETLANDS (RIVERINE) (MAPPED BY USGS):            | ±337' E   |
| 7. WATER WELLS:                                     | ±398' SW, ±1320' SW, ±1996' E   |
| 8. WETLANDS (FRESHWATER EMERGENT) (MAPPED BY USGS): | ±453' W, ±986' SW, ±1490' S, ±1609' SE, ±2461' SW   |
| 9. EXISTING FACILITIES:                             | ±751' N, ±872' N, ±1075' E, ±1093' E, ±1157' E, ±1186' E, ±1739' N  |
| 10. GATES:  | ±814' E, ±818' E, ±920' N, ±940' N, ±1061' SE, ±1076' SE, ±1203' E, ±1226' E, ±1772' SE, ±1799' SE  |
| 11. ABANDONED OIL AND GAS WELLS:                    | ±882' NW, ±1661' W, ±1746' SE, ±1881' W   |
| 12. ABOVE-GROUND UTILITY LINES:                     | ±946' NW, ±1363' SE, ±1626' E   |
| 13. PONDS (MAPPED BY ASCENT):                       | ±1056' SW, ±1317' E, ±2364' NE  |
| 14. WELANDS (FRESHWATER PONDS) (MAPPED BY USGS):    | ±1068' SW, ±1676' S, ±2355' W, ±2533' NW, ±2537' S  |
| 15. BUILDINGS:                                      | ±1207' SE, ±1343' SE, ±1346' SE, ±1372' SE, ±1384' SE, ±1393' SE, ±1472' SE, ±1737' E, ±1767' E, ±1859' S, ±1887' E   |
| 16. SOLAR PANEL:                                    | ±1230' SW   |
| 17. PIVOT POINTS:                                   | ±1252' NE, ±1737' SE  |
| 18. RESIDENTIAL BUILDING UNITS:                     | ±1322' SE, ±1905' E, ±1995' E   |
| 19. UTILITY BOXES:                                  | ±1624' E, ±1650' E  |



**REFERENCE LOCATION**

★

LAT: 40.50175° N  
LONG: 104.49696° W  
ELEVATION: 4719'  
2292' FNL & 2269' FWL  
PDOP: 1.4  
GPS OPERATOR: RYAN DESMOND

DATA SOURCE:  
AERIAL IMAGERY: ASCENT, NAIP 2019  
WATER WELLS: COLORADO DWR  
NHD: USGS

PUBLICLY AVAILABLE DATA SOURCES HAVE NOT BEEN INDEPENDENTLY VERIFIED BY ASCENT.

**OIL & GAS SURFACE ACREAGE:**

7.4 ACRES OIL & GAS LOCATION  
7.4 ACRES INTERIM RECLAIM  
2.9 ACRES WORKING PAD SURFACE

DISCLAIMER:  
THIS PLOT DOES NOT REPRESENT A MONUMENTED LAND SURVEY AND SHOULD NOT BE RELIED UPON TO DETERMINE BOUNDARY LINES, PROPERTY OWNERSHIP OR OTHER PROPERTY INTERESTS. PARCEL LINES, IF DEPICTED HAVE NOT BEEN FIELD VERIFIED AND MAY BE BASED UPON PUBLICLY AVAILABLE DATA THAT ALSO HAS NOT BEEN INDEPENDENTLY VERIFIED.

CURRENT SURFACE USE: RANGELAND  
FUTURE SURFACE USE: RANGELAND

8620 Wolff Court  
Westminster, CO 80031  
(303) 928-7128  
www.ascentgeomatics.com

FIELD DATE: 05-21-21  
DRAWING DATE: 07-14-21  
DRAWN BY: JDH  
CHECKED BY: NJM

SITE NAME:  
A12-07 FACILITY  
SURFACE LOCATION:  
SW 1/4 NE 1/4 SEC. 12, T6N, R64W, 6TH P.M.  
WELD COUNTY, COLORADO

**LEGEND:**

- = PROPOSED WELL
- △ = PIVOT POINT
- ✕ = WATER WELL
- ◆ = EXISTING WELL
- = ELECTRICAL BOX
- = CANAL
- = FENCE
- OHU— = OVERHEAD UTILITY
- = PROPOSED ACCESS ROAD
- = EXISTING ACCESS ROAD (TO BE IMPROVED)
- = PRIVATE ROAD
- = PUBLIC ROAD
- = DRY & ABANDONED WELL
- = PROPOSED CULVERT
- = GATE
- = CATTLE GAURD

- = 2000' BUFFER FROM WPS
- = 500' BUFFER FROM WPS
- = WETLAND
- = BUILDING
- = POND
- = PROPOSED FACILITY
- = OIL & GAS LOCATION
- = RESIDENTIAL BUILDING UNIT

- = EXISTING FACILITY
- = WORKING PAD SURFACE

PREPARED FOR: