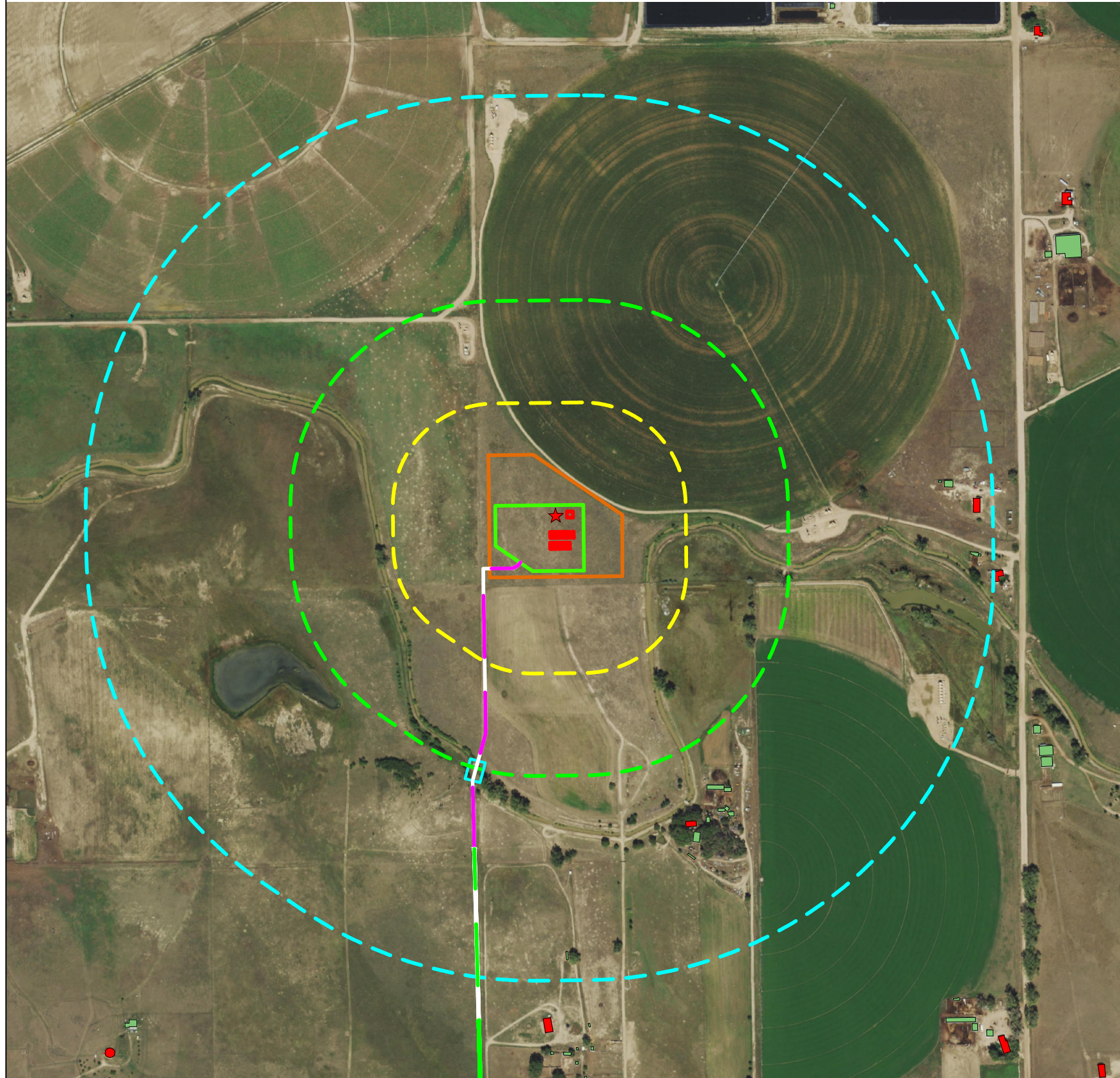


A12-07 FACILITY CULTURAL FEATURES MAP

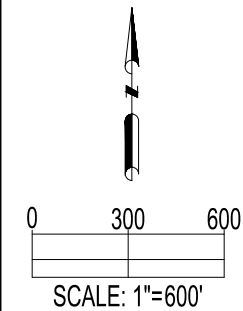


CULTURAL TABLE: (NUMBER OF FEATURES FOUND WITHIN EACH RADIUS AS MEASURED FROM THE WORKING PAD SURFACE)

	RESIDENTIAL BUILDING UNITS	HIGH OCCUPANCY BUILDING UNITS	SCHOOL PROPERTIES	SCHOOL FACILITIES	DESIGNATED OUTSIDE ACTIVITY AREAS
0-500 FEET	0	0	0	0	0
501-1,000 FEET	0	0	0	0	0
1,001-2,000 FEET	3	0	0	0	0
2,001-5,280 FEET	28	0	0	0	0

CULTURAL DISTANCES:

	From Well	From Equipment	From Working Pad Surface
BUILDING	N/A	±1334' SE	±1207' SE
RESIDENTIAL BUILDING UNIT	N/A	±1447' SE	±1322' SE
HIGH OCCUPANCY BUILDING UNIT	N/A	+5280' NW	+5280' NW
DESIGNATED OUTSIDE ACTIVITY AREA	N/A	+5280' SW	+5280' SW
PUBLIC ROAD	N/A	±2175' E	±2127' E
ABOVE GROUND UTILITY	N/A	±1081' NW	±946' NW
RAILROAD	N/A	+5280' W	+5280' W
PROPERTY LINE	N/A	±163' S	±55' S
SCHOOL FACILITY	N/A	+5280' NW	+5280' NW
SCHOOL PROPERTY LINE	N/A	+5280' NW	+5280' NW
CHILD CARE CENTER	N/A	+5280' NW	+5280' NW
DIC BOUNDARY	N/A	+5280' SW	+5280' SW



DATA SOURCE:
AERIAL IMAGERY: ASCENT, NAIP 2019
WATER WELLS: COLORADO DWR
NHD: USGS

PUBLICLY AVAILABLE DATA SOURCES HAVE NOT BEEN INDEPENDENTLY VERIFIED BY ASCENT.

REFERENCE LOCATION
★
LAT: 40.50175° N
LONG: 104.49696° W
ELEVATION: 4719'
2292' FNL & 2269' FWL
PDOP: 1.4
GPS OPERATOR: RYAN DESMOND

DISCLAIMER:
THIS PLOT DOES NOT REPRESENT A MONUMENTED LAND SURVEY AND SHOULD NOT BE RELIED UPON TO DETERMINE BOUNDARY LINES, PROPERTY OWNERSHIP OR OTHER PROPERTY INTERESTS. PARCEL LINES, IF DEPICTED HAVE NOT BEEN FIELD VERIFIED AND MAY BE BASED UPON PUBLICLY AVAILABLE DATA THAT ALSO HAS NOT BEEN INDEPENDENTLY VERIFIED.

CURRENT SURFACE USE: RANGELAND
FUTURE SURFACE USE: RANGELAND

8620 Wolff Court
Westminster, CO 80031
(303) 928-7128
www.ascentgeomatics.com

FIELD DATE: 05-21-21
DRAWING DATE: 08-11-21
DRAWN BY: JDH
CHECKED BY: NJM

SITE NAME:
A12-07 FACILITY
SURFACE LOCATION:
SW 1/4 NE 1/4 SEC. 12, T6N, R64W, 6TH P.M.
WELD COUNTY, COLORADO

LEGEND:

- = PROPOSED WELL
- = PROPOSED CULVERT
- = 2000' RADIUS FROM WPS
- = 1000' RADIUS FROM WPS
- = 500' RADIUS FROM WPS
- = BUILDING
- = WORKING PAD SURFACE

- = PROPOSED FACILITY
- = OIL & GAS LOCATION
- = RESIDENTIAL BUILDING UNIT
- = PROPOSED ACCESS ROAD
- = EXISTING ACCESS ROAD (TO BE IMPROVED)

PREPARED FOR: