

INTERIM RECLAMATION PLAN



Date: January 10, 2022

Location: WR OGDP 2 / Wells Ranch CDP / A12-07 Facility

Legal Description: SWNE Section 12, Township 6 North, Range 64 West, 6th P.M., Weld County Colorado

[Table of Contents](#)

Article I. Introduction 2

 Location Information 2

Article II. Site Specific Details 2

 Vegetation..... 2

 Soils 2

 Security 3

 Pipeline/Flowline/Utility 3

Article III. Mitigation Measures and Best Management Practices 3

 1002.a. Fencing 3

 1002.f. Stormwater Management 3

 1003.a. General..... 3

 1003.b. Areas no Longer in Use 4

 1003.c. Compaction Alleviation. 4

 1003.d. Drilling pit closure 4

 1003.e. Restoration and revegetation 4

 1003.f. Weed control 4

Reclamation Monitoring, Inspection, Maintenance, and Reporting..... 4

 Interim Reclamation Completion Notice 5

 Site-Specific BMPs..... 5

Article IV. Exhibits/References/Appendices 6

Article I. Introduction

Location Information

This document provides site-specific information for the A12-07 Facility within the WR OGD 2 of the Wells Ranch CDP. The information in this document relates specifically to the time during the construction of this location and the construction, drilling, completion, and production of the seventeen (17) proposed horizontal wells producing to this location.

The proposed location is irrigated range northwest of the intersection of WCR 61 and WCR 70. The Pad will be in the SWNE of Section 12, Township 6 North, Range 64 West, zoned agricultural within the Weld County Near-Urban Planning Area. A 1041 WOGLA was filed for the CDP as 1041WOGLA19-0042 on 12/10/2019 and recorded at reception #4556398 on 1/8/2020. Site-specific supplemental information will be filed with Weld County prior to commencement of operations.

The proposed A12-07 Facility oil and gas location disturbance will be 7.4 acres which will not be reduced after interim reclamation. The proposed working pad surface will be 2.9 acres. The A12-07 Facility is on Parcel 80112100001 owned by Case P Gabel. The location is currently used for rangeland.

The proposed A12-07 Facility will accept production from wells on the A12-02 Pad and the A12-10 Pad. The proposed A12-07 Facility equipment will include separators, vapor recovery units (VRUs), gas compressor(s), VOC combustors, a maintenance tank, surge vessels, skid drain vaults, pump skids, and proposed electrical and/or solar equipment.

Phase	Duration (days)	Estimated Start Date
Construction	60 days	2nd Quarter, 2024
Drilling	35 days	3rd Quarter, 2024
Completion	35 days	4th Quarter, 2025
Flowback	N/A	Flowing back to production facility
Production	25 years	4th Quarter, 2025
Interim Reclamation	60 days	3rd Quarter, 2026

Article II. Site Specific Details

Vegetation

The location is in rangeland.
The dominant species is Blue Grama.

Soils

Total area of soil disturbance in acres including accesses, and flowline corridors: approximately 9.7 acres.

Soil details are included in attached soil report.

Facility Soil type(s): 72 - Vona loamy sand, 0 to 3 percent slopes; 52 - Otero sandy loam, 3 to 5 percent slopes; 73 - Vona loamy sand, 3 to 5 percent slopes; 76 - Vona sandy loam, 1 to 3 percent slopes

Access Soil type(s)*: 51 - Otero sandy loam, 1 to 3 percent slopes; 73 - Vona loamy sand, 3 to 5 percent slopes; 76 - Vona sandy loam, 1 to 3 percent slopes

Flowline Corridor Soil type(s)*: 51 - Otero sandy loam, 1 to 3 percent slopes; 73 - Vona loamy sand, 3 to 5 percent slopes; 76 - Vona sandy loam, 1 to 3 percent slopes

**NRCS data is not accurate at scale for access roads and flowline corridor, and flowline is partially co-located underneath access road.*

Security

A meeting with the surface owner will occur after completions but before interim reclamation to determine a fencing plan if needed. The location will be adequately secured per 603.h to restrict access by unauthorized persons in accordance with the surface owner's requests.

Pipeline/Flowline/Utility

No portions of the access road will be reclaimed. Buried intra-facility flowline corridors will be totally reclaimed except where co-located underneath access roads. 3rd party utility and gathering pipelines are not being permitted as part of this OGD.

Article III. Mitigation Measures and Best Management Practices

1002.a. Fencing

Noble will use CPW-recommended fence designs when consistent with the Surface Owner's approval and any relevant Local Government requirements.

1002.f. Stormwater Management

Temporary seeding, hydro mulching, and/or surface roughening will be placed along the north, east, and west sides of the pad during initial pad construction and maintained until interim reclamation, where additional seeding, hydro mulching, and/or surface roughening will also occur at the areas being reclaimed.

A proposed offsite channel which drains into a detention pond along the east side of the pad will be constructed during pad construction and maintained throughout the life of the location.

1003.a. General

All surface production facilities shall be maintained in accordance with Rule 603.

All E&P waste shall be handled according to the 900 Series rules.

All guy line anchors shall be brightly marked pursuant to Rule 603.j.

1003.b. Areas no Longer in Use

Not applicable.

1003.c. Compaction Alleviation.

Not applicable.

1003.d. Drilling pit closure

Not applicable.

1003.e. Restoration and revegetation

All segregated soil horizons removed from non-crop lands shall be replaced to their original relative positions and contour as near as practicable to achieve erosion control and long-term stability and shall be tilled adequately in order to establish a proper seedbed. The disturbed area then shall be reseeded in the first favorable season following rig demobilization.

Noble Energy will be responsible for segregating the topsoil, backfilling, re-compacting any backfill, reseeding, and re-contouring the surface of any disturbed area so as not to interfere with Owner's operations and will reclaim such area to be returned to preexisting conditions as best as possible with control of all weeds.

Any areas reclaimed will be planted with the recommended Weld County seed mix.

1003.f. Weed control

During drilling, completion, production, and reclamation operations, all disturbed areas shall be kept as free of all undesirable plant species. Noble Energy or contractor will conduct daily visual inspections for weeds. Noble Energy will check for weed seeds and when found will clean gear, equipment, and clothing prior to entering or leaving the site.

Reclamation Monitoring, Inspection, Maintenance, and Reporting

Regular monitoring of reclaimed areas will be conducted by a qualified consultant to assess the success of reclamation activities and identify any corrective actions required to achieve success. Any corrective actions recommended by the consultant will be communicated with the appropriate Noble Energy personnel who will implement the corrective actions and track the status of completion of such actions. Corrective actions may include, but not be limited to, control of weeds and other undesired vegetation, recommendations for soil amendments or additional seeding, and erosion control. The regular monitoring will include qualitative assessments of revegetation success until such time the consultant believes that revegetation has met the appropriate State and/or Federal standards. At that time, the consultant will utilize an appropriate quantitative method for determining revegetation success.

Interim Reclamation Completion Notice

Noble Energy will submit a Form 4 Sundry Notice describe reclamation procedures, associated mitigation measures, changes to final land use, and the total cover of live perennial vegetation to evaluate the success of interim reclamation.

Site-Specific BMPs

The following is a list of site-specific BMPs related to Noble Energy's interim reclamation approach at the A12-07 Facility location, for areas that will be reclaimed and not used for continuing oil and gas operations:

- Compaction alleviation – compacted soils and areas of the location impacted by construction will be ripped to a minimum depth of 18 inches prior to topsoil replacement. Decompaction will be performed by a parabolic Ag style ripper capable of fracturing the soil ensuring soil layers are not mixed. Proper decompaction will allow for greater water infiltration and promote vegetation growth.
- Culvert – culverts are a means of subsurface storm water conveyance where surface transport is not feasible. Culverts are most often used to convey water under a roadway without impeding use of the road.
- Culvert protection - culvert protection may be required at the inlet (upstream side) of the culvert and/or the outlet (downstream side) of the culvert. Protection helps to reduce erosion from culverts with concentrated, high velocity flows.
- Erosion control – seed/mulch application functions as erosion control during initial reclamation efforts until adequate vegetation has been established, at which point the reclamation will be deemed final stabilized. The interim working pad will be stabilized against potential erosion for the long-term with surface armoring.
- Fencing – Noble Energy will fence reclaimed areas until interim reclamation has been achieved in order to ensure vegetation growth is not overgrazed. Fence types are to be determined by Noble Energy and the landowner to adequately prevent livestock from entering reclaimed areas. Fencing to be installed after seed/mulch application.
- Grading – Grading involves reshaping the ground surface to planned grades. Grading provides more suitable topography for well pads and pipelines and helps to control runoff, soil erosion, and sediment during and after construction in these areas.
- Mulching – mulching is a temporary erosion control used to stabilize exposed soils while waiting for vegetation to establish. Mulch protects soils from rain impacts and wind erosion, increases infiltration, and helps regulate soil temperatures. Typically, agricultural straw or hay is mechanically applied and crimped in or wood splinters/fibers are surface applied by hand or machinery. Tackifiers may be sprayed over the applied mulch to enhance stabilization.
- Placement of soil – any subsoil used during interim reclamation is applied first, followed by top soil, in order to ensure that topsoil is not contaminated or adulterated and to ensure optimum germination efforts.
- Packing of soil layers – if multiple soil layers are applied during interim reclamation, each soil layer is packed separately and sequentially.
- Recontouring – documenting the existing topography and natural drainages and the site prior to disturbance, and reestablishing the topography and contours on the reclamation to pre-disturbance conditions.

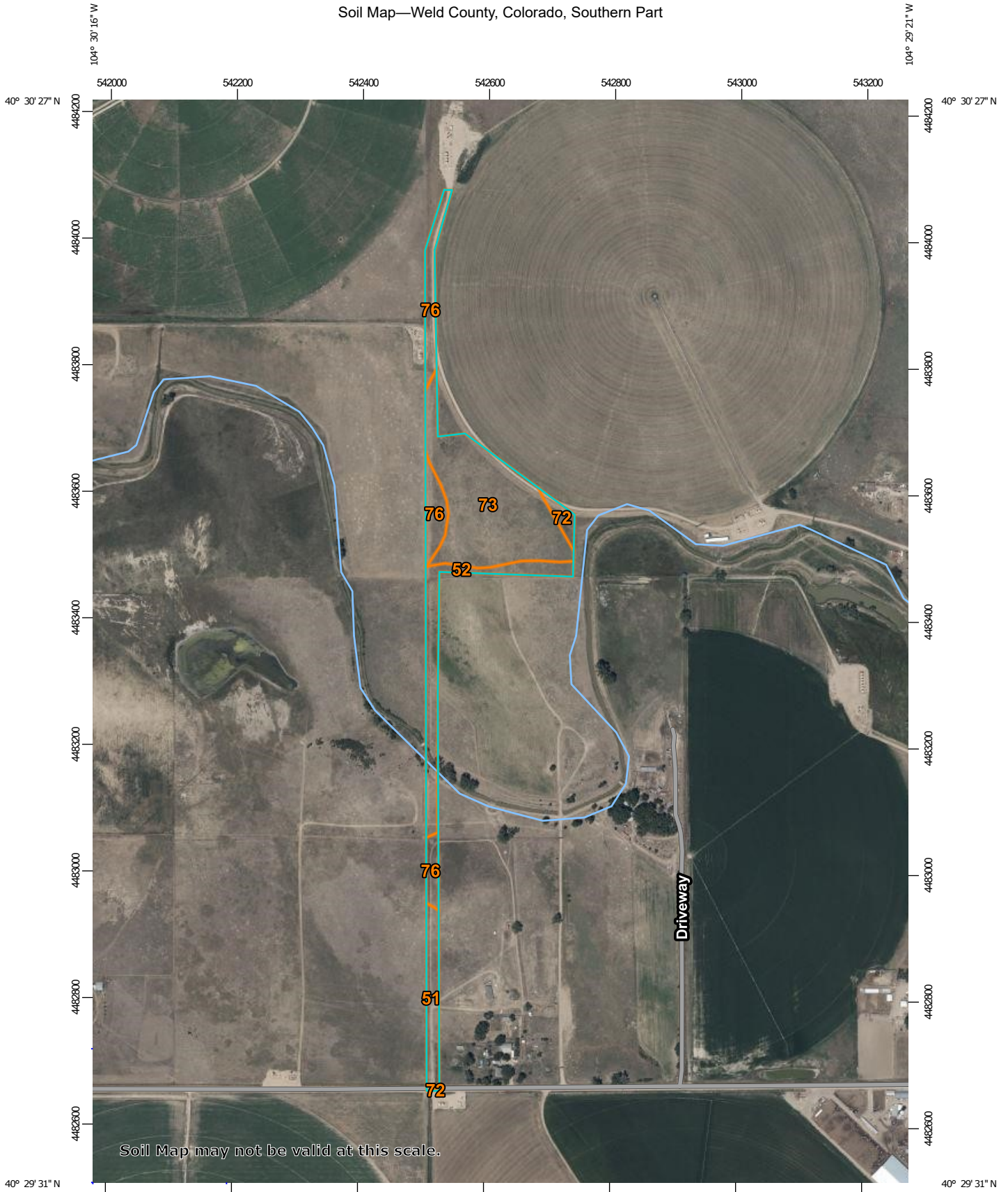
- Routine inspections – Noble Energy, and/or third-party contractors, conduct a number of routine and regularly scheduled inspections during which the reclamation and general site conditions are inspected and monitored.
- Seedbed preparation – after decompaction, recontouring, and topsoil application, the top 3- 4 inches of soil will be prepared for seed application using a high-speed disk and/or a mulcher as needed. Seedbed will be void of earthen clods and firm enough to keep seed from being applied too deeply. Soil samples will be collected and analyzed prior to seed application to identify any amendments needed. Compost and fertilizer will be applied based on current site conditions and on an as needed basis.
- Seeding – seeding, to establish perennial vegetative cover following construction, is the best long term stabilization control for areas not stabilized with other permanent controls (pavement, concrete, road base, etc.). Establishing perennial vegetation stabilizes the soil, reduces wind and water erosion, minimizes sheet flow, increases infiltration, and reduces overall runoff volumes. Seeding can be used to establish temporary stabilization when dirt moving activities have ceased and will not resume for an extended period of time, or as a final stabilization technique as part of the reclamation plan for a site.
- Seed mix – the seed mix will be selected in coordination with the landowner and/or the NRCS.
- Stockpile management – stockpile management is the protection of stockpiled erodible materials through structural and nonstructural practices.
- Surface armor – surface armor is a combination of various materials (e.g., clay, concrete, dirt, rock, etc.) used to stabilize a surface on location where erosion could occur. The armor reduces erosion caused by runoff and/or raindrop impact and provides a stable working surface for various construction related activities. Surface armor is often utilized throughout the life of a location and can be incorporated on access roads, tank battery locations, and well head locations.
- Timing of reclamation – seeding will occur during interim reclamation – after compaction alleviation, topsoil application, recontouring, and seedbed preparation, and will be conducted during a spring or fall planting window to achieve maximum germination rates.
- Topsoil salvage – the salvage and proper handling of topsoil is one of the keys to reclamation success. Topsoil is vital for the revegetation of disturbed areas following final grading.
- Training – employee training on spill prevention, stormwater, and associated practices and procedures is essential to ensuring that everyone has the knowledge needed to follow appropriate steps and be able to minimize potential impacts resulting from stormwater related incidents.
- Weed control – invasive plants will be managed by performing a site assessment during the spring and upon completion of the first growing season after interim reclamation. This assessment will identify and inventory any/all invasive plants on the location. The assessment will include GPS coordinates and maps detailing the location of the invasive plants. Management will be performed by either mowing or spraying and in some rare occasions both methods may be necessary. Routine inspections throughout the life of the pad will also aid in identifying when weed mitigation is needed.

Article IV. Exhibits/References/Appendices

NRCS Soil Details
 Seed Mix
 Relevant Layout Drawings

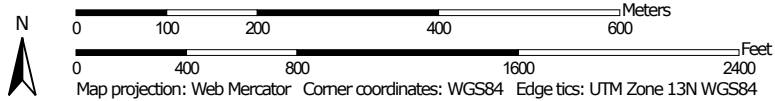
Reference Area Map and Photos

Soil Map—Weld County, Colorado, Southern Part



Soil Map may not be valid at this scale.

Map Scale: 1:8,340 if printed on A portrait (8.5" x 11") sheet.




Natural Resources
Conservation Service

Web Soil Survey
National Cooperative Soil Survey

9/16/2021
Page 1 of 3

MAP LEGEND

Area of Interest (AOI)

 Area of Interest (AOI)

Soils

 Soil Map Unit Polygons

 Soil Map Unit Lines

 Soil Map Unit Points

Special Point Features



Blowout



Borrow Pit



Clay Spot



Closed Depression



Gravel Pit



Gravelly Spot



Landfill



Lava Flow



Marsh or swamp



Mine or Quarry



Miscellaneous Water



Perennial Water



Rock Outcrop



Saline Spot



Sandy Spot



Severely Eroded Spot



Sinkhole



Slide or Slip



Sodic Spot



Spoil Area



Stony Spot



Very Stony Spot



Wet Spot



Other



Special Line Features

Water Features



Streams and Canals

Transportation



Rails



Interstate Highways



US Routes



Major Roads



Local Roads

Background



Aerial Photography

MAP INFORMATION

The soil surveys that comprise your AOI were mapped at 1:24,000.

Warning: Soil Map may not be valid at this scale.

Enlargement of maps beyond the scale of mapping can cause misunderstanding of the detail of mapping and accuracy of soil line placement. The maps do not show the small areas of contrasting soils that could have been shown at a more detailed scale.

Please rely on the bar scale on each map sheet for map measurements.

Source of Map: Natural Resources Conservation Service

Web Soil Survey URL:

Coordinate System: Web Mercator (EPSG:3857)

Maps from the Web Soil Survey are based on the Web Mercator projection, which preserves direction and shape but distorts distance and area. A projection that preserves area, such as the Albers equal-area conic projection, should be used if more accurate calculations of distance or area are required.

This product is generated from the USDA-NRCS certified data as of the version date(s) listed below.

Soil Survey Area: Weld County, Colorado, Southern Part

Survey Area Data: Version 19, Jun 5, 2020

Soil map units are labeled (as space allows) for map scales 1:50,000 or larger.

Date(s) aerial images were photographed: Jul 19, 2018—Aug 10, 2018

The orthophoto or other base map on which the soil lines were compiled and digitized probably differs from the background imagery displayed on these maps. As a result, some minor shifting of map unit boundaries may be evident.

Map Unit Legend

Map Unit Symbol	Map Unit Name	Acres in AOI	Percent of AOI
51	Otero sandy loam, 1 to 3 percent slopes	1.4	9.0%
52	Otero sandy loam, 3 to 5 percent slopes	3.0	18.7%
72	Vona loamy sand, 0 to 3 percent slopes	0.4	2.8%
73	Vona loamy sand, 3 to 5 percent slopes	8.3	52.2%
76	Vona sandy loam, 1 to 3 percent slopes	2.7	17.2%
Totals for Area of Interest		15.8	100.0%

Weld County, Colorado, Southern Part

51—Otero sandy loam, 1 to 3 percent slopes

Map Unit Setting

National map unit symbol: 3630

Elevation: 4,700 to 5,250 feet

Mean annual precipitation: 12 to 15 inches

Mean annual air temperature: 48 to 52 degrees F

Frost-free period: 130 to 180 days

Farmland classification: Prime farmland if irrigated and the product of
I (soil erodibility) x C (climate factor) does not exceed 60

Map Unit Composition

Otero and similar soils: 85 percent

Minor components: 15 percent

*Estimates are based on observations, descriptions, and transects of
the mapunit.*

Description of Otero

Setting

Landform: Plains

Down-slope shape: Linear

Across-slope shape: Linear

Parent material: Eolian deposits and/or mixed outwash

Typical profile

H1 - 0 to 12 inches: sandy loam

H2 - 12 to 60 inches: fine sandy loam

Properties and qualities

Slope: 1 to 3 percent

Depth to restrictive feature: More than 80 inches

Drainage class: Well drained

Runoff class: Very low

Capacity of the most limiting layer to transmit water

(Ksat): Moderately high to high (0.57 to 5.95 in/hr)

Depth to water table: More than 80 inches

Frequency of flooding: None

Frequency of ponding: None

Calcium carbonate, maximum content: 10 percent

Maximum salinity: Nonsaline to slightly saline (0.0 to 4.0
mmhos/cm)

Available water capacity: Moderate (about 7.7 inches)

Interpretive groups

Land capability classification (irrigated): 3e

Land capability classification (nonirrigated): 4e

Hydrologic Soil Group: A

Ecological site: R067BY024CO - Sandy Plains

Hydric soil rating: No

Minor Components

Kim

Percent of map unit: 10 percent

Hydric soil rating: No

Vona

Percent of map unit: 5 percent

Hydric soil rating: No

Data Source Information

Soil Survey Area: Weld County, Colorado, Southern Part

Survey Area Data: Version 19, Jun 5, 2020

Weld County, Colorado, Southern Part

52—Otero sandy loam, 3 to 5 percent slopes

Map Unit Setting

National map unit symbol: 3631

Elevation: 4,700 to 5,250 feet

Mean annual precipitation: 12 to 15 inches

Mean annual air temperature: 48 to 52 degrees F

Frost-free period: 130 to 180 days

Farmland classification: Farmland of statewide importance

Map Unit Composition

Otero and similar soils: 85 percent

Minor components: 15 percent

Estimates are based on observations, descriptions, and transects of the mapunit.

Description of Otero

Setting

Landform: Plains

Down-slope shape: Linear

Across-slope shape: Linear

Parent material: Eolian deposits and/or mixed outwash

Typical profile

H1 - 0 to 12 inches: sandy loam

H2 - 12 to 60 inches: fine sandy loam

Properties and qualities

Slope: 3 to 5 percent

Depth to restrictive feature: More than 80 inches

Drainage class: Well drained

Runoff class: Very low

Capacity of the most limiting layer to transmit water

(Ksat): Moderately high to high (0.57 to 5.95 in/hr)

Depth to water table: More than 80 inches

Frequency of flooding: None

Frequency of ponding: None

Calcium carbonate, maximum content: 10 percent

Maximum salinity: Nonsaline to slightly saline (0.0 to 4.0 mmhos/cm)

Available water capacity: Moderate (about 7.7 inches)

Interpretive groups

Land capability classification (irrigated): 3e

Land capability classification (nonirrigated): 4e

Hydrologic Soil Group: A

Ecological site: R067BY024CO - Sandy Plains

Hydric soil rating: No

Minor Components

Kim

Percent of map unit: 12 percent

Hydric soil rating: No

Vona

Percent of map unit: 3 percent

Hydric soil rating: No

Data Source Information

Soil Survey Area: Weld County, Colorado, Southern Part

Survey Area Data: Version 19, Jun 5, 2020

Weld County, Colorado, Southern Part

72—Vona loamy sand, 0 to 3 percent slopes

Map Unit Setting

National map unit symbol: 363r

Elevation: 4,600 to 5,200 feet

Mean annual precipitation: 13 to 15 inches

Mean annual air temperature: 48 to 55 degrees F

Frost-free period: 130 to 160 days

Farmland classification: Farmland of local importance

Map Unit Composition

Vona and similar soils: 85 percent

Minor components: 15 percent

Estimates are based on observations, descriptions, and transects of the mapunit.

Description of Vona

Setting

Landform: Terraces, plains

Down-slope shape: Linear

Across-slope shape: Linear

Parent material: Alluvium and/or eolian deposits

Typical profile

H1 - 0 to 6 inches: loamy sand

H2 - 6 to 28 inches: fine sandy loam

H3 - 28 to 60 inches: sandy loam

Properties and qualities

Slope: 0 to 3 percent

Depth to restrictive feature: More than 80 inches

Natural drainage class: Well drained

Runoff class: Very low

Capacity of the most limiting layer to transmit water (Ksat): High
(1.98 to 6.00 in/hr)

Depth to water table: More than 80 inches

Frequency of flooding: None

Frequency of ponding: None

Calcium carbonate, maximum in profile: 15 percent

Salinity, maximum in profile: Nonsaline to slightly saline (0.0 to 4.0
mmhos/cm)

Available water storage in profile: Moderate (about 6.5 inches)

Interpretive groups

Land capability classification (irrigated): 3e

Land capability classification (nonirrigated): 4e

Hydrologic Soil Group: A

Ecological site: Sandy Plains (R067BY024CO)

Hydric soil rating: No

Minor Components

Remmit

Percent of map unit: 10 percent

Hydric soil rating: No

Valent

Percent of map unit: 5 percent

Hydric soil rating: No

Data Source Information

Soil Survey Area: Weld County, Colorado, Southern Part

Survey Area Data: Version 16, Oct 10, 2017

Weld County, Colorado, Southern Part

73—Vona loamy sand, 3 to 5 percent slopes

Map Unit Setting

National map unit symbol: 363s

Elevation: 4,600 to 5,200 feet

Mean annual precipitation: 13 to 15 inches

Mean annual air temperature: 48 to 55 degrees F

Frost-free period: 130 to 160 days

Farmland classification: Not prime farmland

Map Unit Composition

Vona and similar soils: 85 percent

Minor components: 15 percent

Estimates are based on observations, descriptions, and transects of the mapunit.

Description of Vona

Setting

Landform: Terraces, plains

Down-slope shape: Linear

Across-slope shape: Linear

Parent material: Alluvium and/or eolian deposits

Typical profile

H1 - 0 to 6 inches: loamy sand

H2 - 6 to 28 inches: fine sandy loam

H3 - 28 to 60 inches: sandy loam

Properties and qualities

Slope: 3 to 5 percent

Depth to restrictive feature: More than 80 inches

Natural drainage class: Well drained

Runoff class: Very low

Capacity of the most limiting layer to transmit water (Ksat): High
(1.98 to 6.00 in/hr)

Depth to water table: More than 80 inches

Frequency of flooding: None

Frequency of ponding: None

Calcium carbonate, maximum in profile: 15 percent

Salinity, maximum in profile: Nonsaline to slightly saline (0.0 to 4.0
mmhos/cm)

Available water storage in profile: Moderate (about 6.5 inches)

Interpretive groups

Land capability classification (irrigated): 3e

Land capability classification (nonirrigated): 4e

Hydrologic Soil Group: A

Ecological site: Sandy Plains (R067BY024CO)

Hydric soil rating: No

Minor Components

Remmit

Percent of map unit: 8 percent

Hydric soil rating: No

Valent

Percent of map unit: 7 percent

Hydric soil rating: No

Data Source Information

Soil Survey Area: Weld County, Colorado, Southern Part

Survey Area Data: Version 16, Oct 10, 2017

Weld County, Colorado, Southern Part

76—Vona sandy loam, 1 to 3 percent slopes

Map Unit Setting

National map unit symbol: 363w

Elevation: 4,600 to 5,200 feet

Mean annual precipitation: 13 to 15 inches

Mean annual air temperature: 48 to 55 degrees F

Frost-free period: 130 to 160 days

Farmland classification: Farmland of statewide importance

Map Unit Composition

Vona and similar soils: 85 percent

Minor components: 15 percent

Estimates are based on observations, descriptions, and transects of the mapunit.

Description of Vona

Setting

Landform: Plains, terraces

Down-slope shape: Linear

Across-slope shape: Linear

Parent material: Alluvium and/or eolian deposits

Typical profile

H1 - 0 to 6 inches: sandy loam

H2 - 6 to 28 inches: fine sandy loam

H3 - 28 to 60 inches: sandy loam

Properties and qualities

Slope: 1 to 3 percent

Depth to restrictive feature: More than 80 inches

Natural drainage class: Well drained

Runoff class: Very low

Capacity of the most limiting layer to transmit water (Ksat): High (1.98 to 6.00 in/hr)

Depth to water table: More than 80 inches

Frequency of flooding: None

Frequency of ponding: None

Calcium carbonate, maximum in profile: 15 percent

Salinity, maximum in profile: Nonsaline to very slightly saline (0.0 to 4.0 mmhos/cm)

Available water storage in profile: Moderate (about 6.8 inches)

Interpretive groups

Land capability classification (irrigated): 3e

Land capability classification (nonirrigated): 4e

Hydrologic Soil Group: A

Ecological site: Sandy plains (R067BY024CO)

Minor Components

Remmit

Percent of map unit: 9 percent

Olney

Percent of map unit: 3 percent

Julesburg

Percent of map unit: 3 percent

Data Source Information

Soil Survey Area: Weld County, Colorado, Southern Part

Survey Area Data: Version 13, Sep 23, 2014

General Seed Mixes for Weld County

Sandy Site Mix

Sand Bluestem	(Champ, Chet)	1.00 lbs pls/acre
Sand Lovegrass	(Bend, Native, Ne27)	2.50 lbs pls/acre
Indian Ricegrass	(Nezpar, Rimrock)	3.00 lbs pls/acre
Prairie Sandreed	(Goshen)	0.75 lbs pls/acre
Green Needlegrass	(Lodorm)	1.50 lbs pls/acre
Little bluestem	(Blaze, Cimarron, Camper)	0.75 lbs pls/acre
Yellow Indiangrass	(Cheyenne, Holt, Scout)	0.50 lbs pls/acre
Switchgrass	(Blackwell, Nebraska 28)	1.50 lbs pls/acre
Sand Dropseed		<u>0.50 lbs pls/acre</u>

Total: 12.00 pounds pls/acre

Wetter Site Mix

Western wheatgrass	(Arriba, Barton, Rosana)	3.00 lbs pls/acre
Slender wheatgrass	(Pryor, San Luis)	2.00 lbs pls/acre
Alkaligrass	(Fults II, Salt on Sea)	2.50 lbs pls/acre
Streambank Wheatgrass	(Sodar)	2.50 lbs pls/acre
Switchgrass	(Nebraska 28, Blackwell)	1.75 lbs pls/acre
Green Needlegrass	(Lodorm)	0.50 lbs pls/acre
Sideoats Grama	(Butte, El Reno, Pierre)	1.00 lbs pls/acre
Perennial Ryegrass	(Calibra or Garibaldi tetraploid)	0.50 lbs pls/acre
Sand Dropseed		<u>0.25 lbs pls/acre</u>

Total: 14.00 pounds pls/acre

Areas North of County Road 68 Mix

Buffalo Grass (Texoka, Sharps Improved)	1.5 lbs pls/acre
Little Bluestem (Blaze, Cimarron, Camper)	1.5 lbs pls/acre
Sideoats Grama (Vaughn, Butte, Niner, El Reno, Haskell)	2 lbs pls/acre
Blue Grama (Hachital, Lovington)	3.5 lbs pls/acre
Western wheatgrass (Arriba, Barton, Rosana)	3 lbs pls/acre
Switchgrass (Nebraska 28, Blackwell)	1.5 lbs pls/acre
Perennial Ryegrass (Calibra or Garibaldi tetraploid)	0.75 lbs pls/acre
Sand dropseed	<u>0.25 lbs pls/acre</u>

Total: 14.00 pounds pls/acre

Areas South of County Road 68 Mix

Western Wheatgrass (Arriba, Barton, Rosana)	2.50 lbs pls/acre
Blue Grama (Hachital, Lovington)	1.50 lbs pls/acre
Sideoats Grama (Vaughn, Butte, Niner, El Reno, Haskell)	2.25 lbs pls/acre
Smooth Brome (Lincoln, Manchar)	2.00 lbs pls/acre
Sand dropseed	0.25 lbs pls/acre
Perennial Ryegrass (Calibra or Garibaldi tetraploid)	0.75 lbs pls/acre
Slender Wheatgrass (Pryor, Revenue or San Luis)	2.50 lbs pls/acre
Alkaligrass (Fults II, Salt on Sea)	1.25 lbs pls/acre
Switchgrass (Nebraska 28, Blackwell)	<u>1.00 lbs pls/acre</u>

Total: 14.00 pound pls/acre

A12-07 FACILITY GRADING PLAN



ASCENT GEOMATICS SOLUTIONS
8620 WOLFF COURT
WESTMINSTER, CO 80031
(303) 928-7128

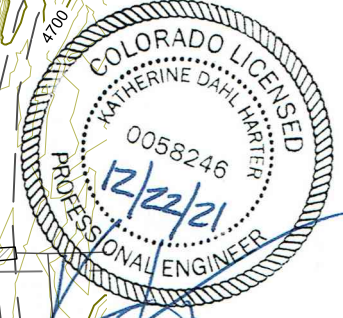
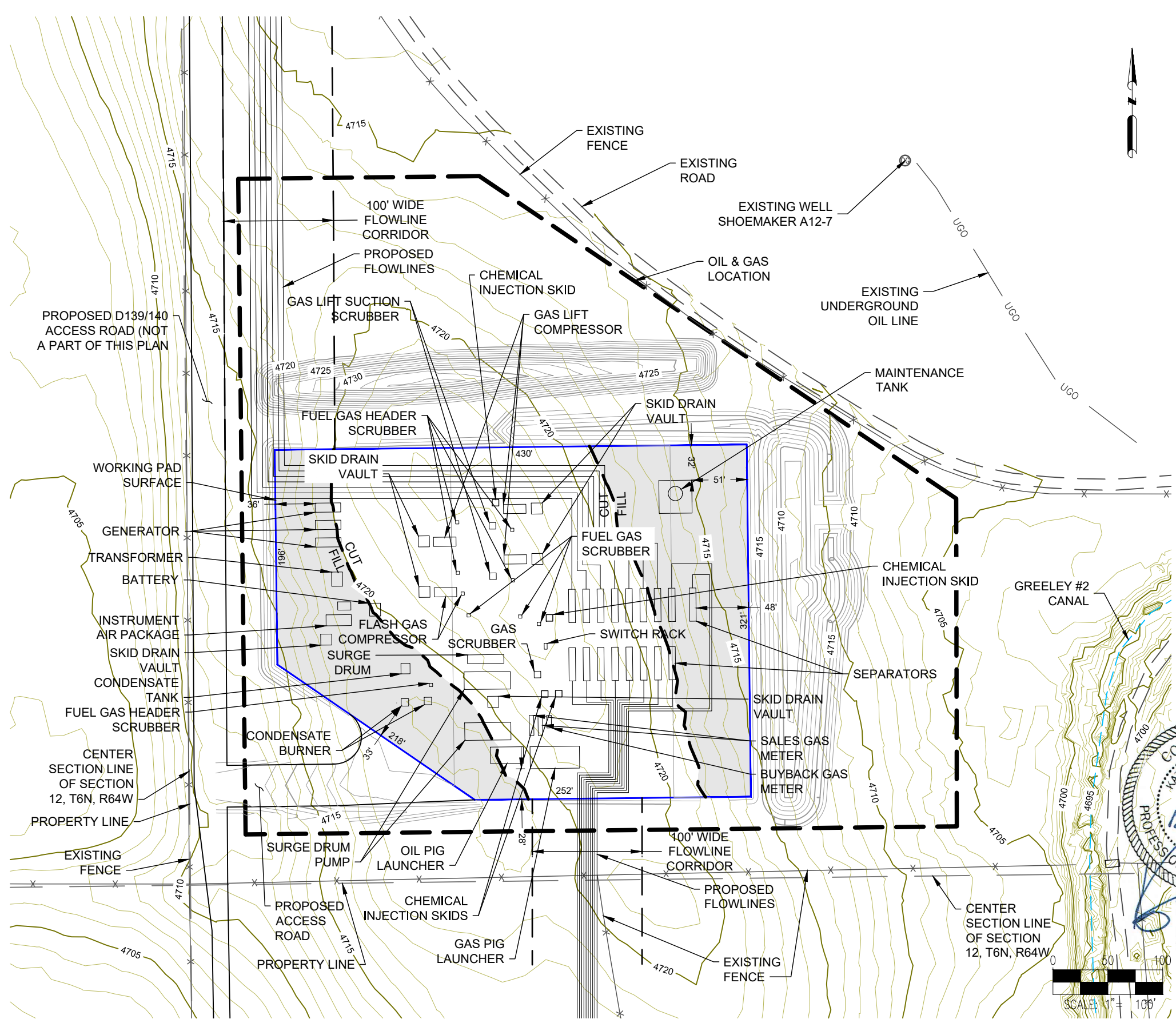


NOBLE ENERGY, INC.
1625 BROADWAY, SUITE 2200
DENVER, CO 80202
(303) 228-4000

SHEET NAME:
PRODUCTION LAYOUT
SURFACE LOCATION
A12-07 FACILITY
SW 1/4 NE 1/4 SECTION 12
T6N, R64W, 6TH P.M.
WELD COUNTY, COLORADO

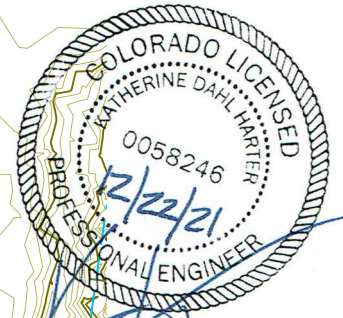
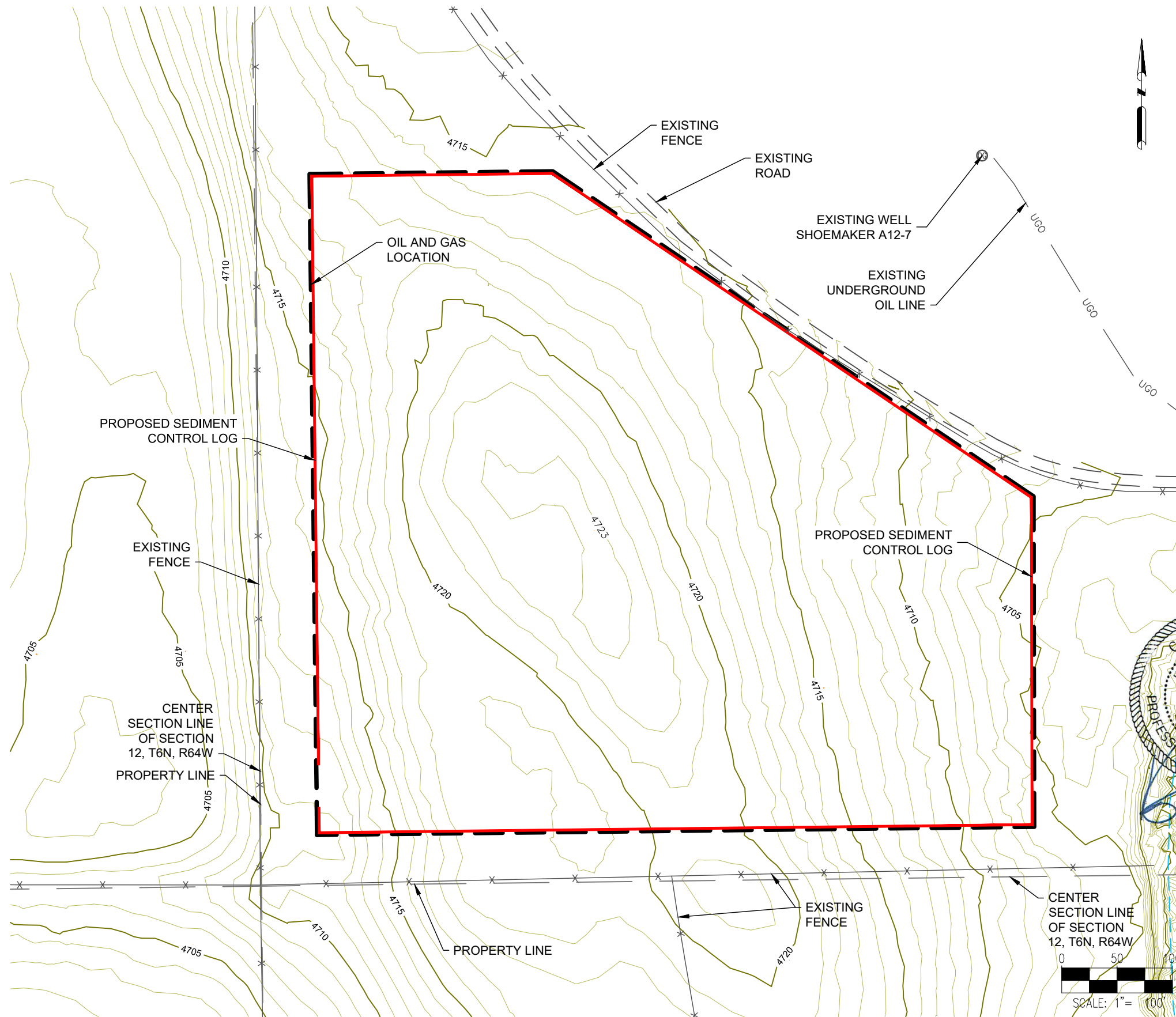
REV.	DATE	DESCRIPTION	INT.
0	09/20/21	ISSUED FOR CONSTRUCTION	AMS

FIELD DATE: 07/31/2019
DRAWING DATE: 07/19/2021
DRAFTED BY: CSG
SHEET NO. 05 OF 11



DISCLAIMER:
THIS PLOT DOES NOT REPRESENT A MONUMENTED LAND SURVEY AND SHOULD NOT BE RELIED UPON TO DETERMINE BOUNDARY LINES, PROPERTY OWNERSHIP OR OTHER PROPERTY INTERESTS. PARCEL LINES, IF DEPICTED HAVE NOT BEEN FIELD VERIFIED AND MAY BE BASED UPON PUBLICLY AVAILABLE DATA THAT ALSO HAS NOT BEEN INDEPENDENTLY VERIFIED.

A12-07 FACILITY GRADING PLAN



DISCLAIMER:
THIS PLOT DOES NOT REPRESENT A MONUMENTED LAND SURVEY AND SHOULD NOT BE RELIED UPON TO DETERMINE BOUNDARY LINES, PROPERTY OWNERSHIP OR OTHER PROPERTY INTERESTS. PARCEL LINES, IF DEPICTED HAVE NOT BEEN FIELD VERIFIED AND MAY BE BASED UPON PUBLICLY AVAILABLE DATA THAT ALSO HAS NOT BEEN INDEPENDENTLY VERIFIED.



ASCENT GEOMATICS SOLUTIONS
8620 WOLFF COURT
WESTMINSTER, CO 80031
(303) 928-7128



NOBLE ENERGY, INC.
1625 BROADWAY, SUITE 2200
DENVER, CO 80202
(303) 228-4000

SHEET NAME:
EROSION & SEDIMENT CONTROL PLAN - INITIAL
SURFACE LOCATION
A12-07 FACILITY
SW 1/4 NE 1/4 SECTION 12
T6N, R64W, 6TH P.M.
WELD COUNTY, COLORADO

REV.	DATE	DESCRIPTION	INT.
0	09/20/21	ISSUED FOR CONSTRUCTION	AMS

FIELD DATE: 07/31/2019
DRAWING DATE: 07/19/2021
DRAFTED BY: CSG
SHEET NO. 06 OF 11

A12-07 FACILITY GRADING PLAN

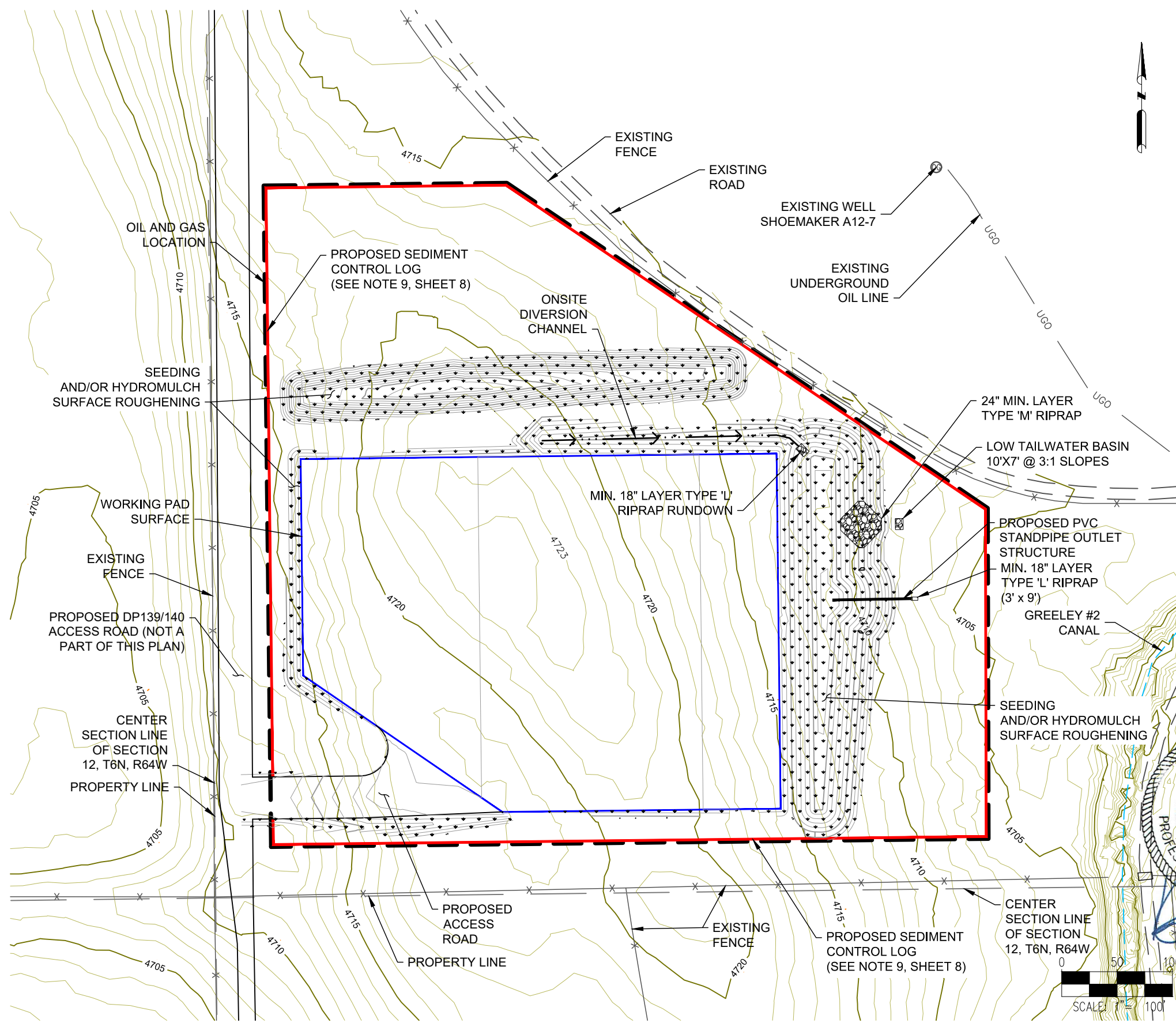


ASCENT GEOMATICS SOLUTIONS
8620 WOLFF COURT
WESTMINSTER, CO 80031
(303) 928-7128



NOBLE ENERGY, INC.
1625 BROADWAY, SUITE 2200
DENVER, CO 80202
(303) 228-4000

SHEET NAME:
EROSION & SEDIMENT CONTROL PLAN - FINAL
SURFACE LOCATION
A12-07 FACILITY
SW 1/4 NE 1/4 SECTION 12
T6N, R64W, 6TH P.M.
WELD COUNTY, COLORADO



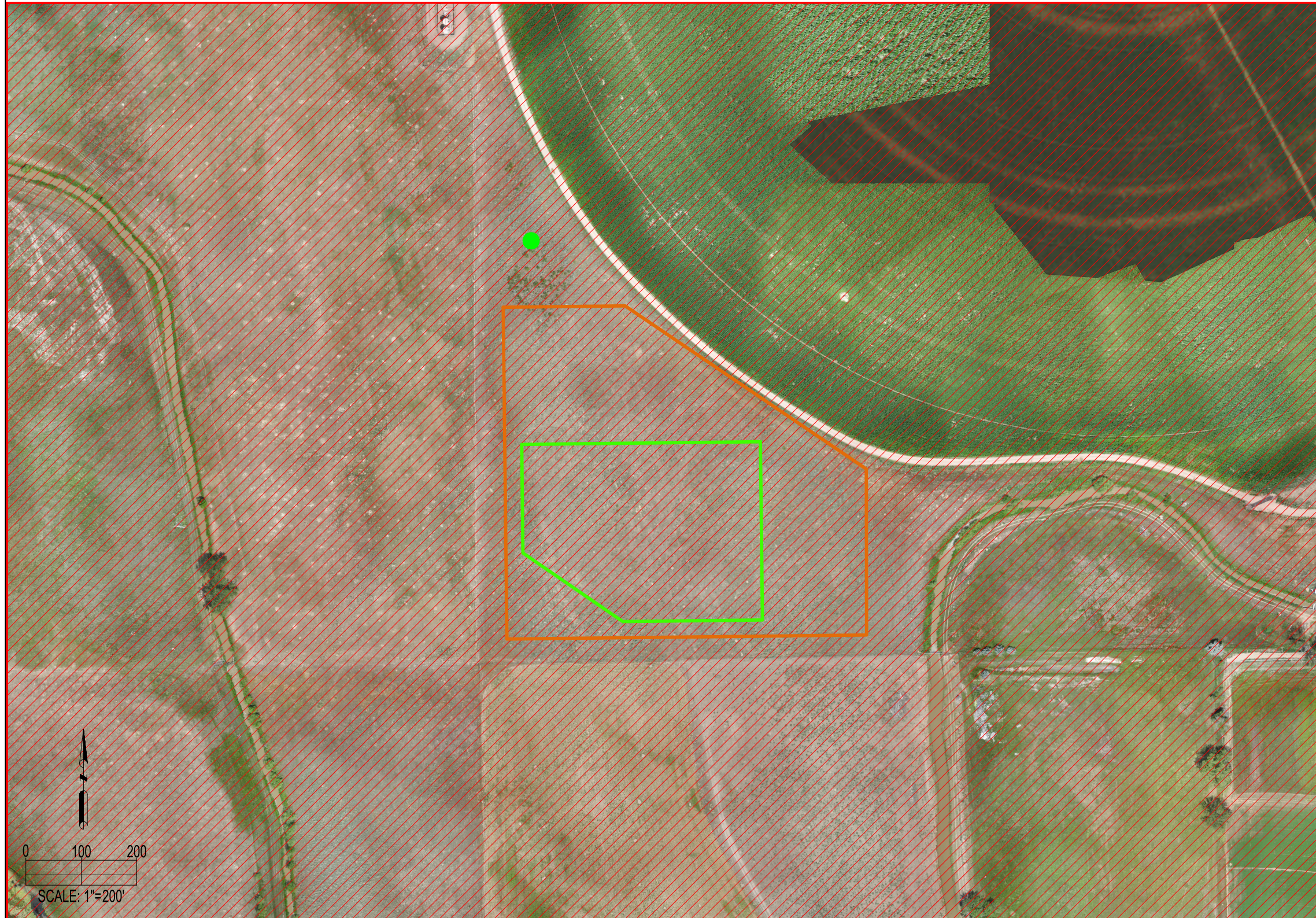
DISCLAIMER:
THIS PLOT DOES NOT REPRESENT A MONUMENTED LAND SURVEY AND SHOULD NOT BE RELIED UPON TO DETERMINE BOUNDARY LINES, PROPERTY OWNERSHIP OR OTHER PROPERTY INTERESTS. PARCEL LINES, IF DEPICTED HAVE NOT BEEN FIELD VERIFIED AND MAY BE BASED UPON PUBLICLY AVAILABLE DATA THAT ALSO HAS NOT BEEN INDEPENDENTLY VERIFIED.

REV.	DATE	DESCRIPTION	INT.
0	09/20/21	ISSUED FOR CONSTRUCTION	AMS

FIELD DATE: 07/31/2019
DRAWING DATE: 07/19/2021
DRAFTED BY: CSG
SHEET NO. 07 OF 11

A12-07 FACILITY REFERENCE AREA MAP

REFERENCE AREA MAP/VIEW ABOVE:



DOMINANT VEGETATION:
(AS DETERMINED FROM THE USDA NRCS WEB SOIL SURVEY SITE)

BLUE GRAMA

REFERENCE LOCATION

REFERENCE PHOTO POINT

LAT: 40.502897° N
LONG: 104.497944° W
ELEVATION: 4714'

ALL PHOTOS WERE TAKEN ON 05/21/2021.

8620 Wolff Court
Westminster, CO 80031
(303) 928-7128
www.ascentgeomatics.com

FIELD DATE: 05-21-21	DRAWING DATE: 08-11-21
DRAWN BY: JDH	CHECKED BY: JNM

SITE NAME:
A12-07 FACILITY

SURFACE LOCATION:
SW 1/4 NE 1/4 SEC. 12, T6N, R64W, 6TH P.M.
WELD COUNTY, COLORADO

DATA SOURCE:
AERIAL: ASCENT, NAIP 2019

PUBLICLY AVAILABLE DATA SOURCES HAVE NOT BEEN INDEPENDENTLY VERIFIED BY ASCENT.

LEGEND:

● = REFERENCE PHOTO POINT

▭ = OIL & GAS LOCATION
▭ = WORKING PAD SURFACE
▨ = HIGH PRIORITY HABITAT

DISCLAIMER:
THIS PLOT DOES NOT REPRESENT A MONUMENTED LAND SURVEY AND SHOULD NOT BE RELIED UPON TO DETERMINE BOUNDARY LINES, PROPERTY OWNERSHIP OR OTHER PROPERTY INTERESTS. PARCEL LINES, IF DEPICTED HAVE NOT BEEN FIELD VERIFIED AND MAY BE BASED UPON PUBLICLY AVAILABLE DATA THAT ALSO HAS NOT BEEN INDEPENDENTLY VERIFIED.

PREPARED FOR:

A12-07 FACILITY REFERENCE AREA PHOTOS

REFERENCE PHOTOS:

VIEW NORTH



VIEW EAST



VIEW SOUTH



VIEW WEST



VIEW ABOVE



REFERENCE PHOTO POINT

LAT: 40.502897° N
LONG: 104.497944° W
ELEVATION: 4714'

DISCLAIMER:
THIS PLOT DOES NOT REPRESENT A MONUMENTED LAND SURVEY AND SHOULD NOT BE RELIED UPON TO DETERMINE BOUNDARY LINES, PROPERTY OWNERSHIP OR OTHER PROPERTY INTERESTS. PARCEL LINES, IF DEPICTED HAVE NOT BEEN FIELD VERIFIED AND MAY BE BASED UPON PUBLICLY AVAILABLE DATA THAT ALSO HAS NOT BEEN INDEPENDENTLY VERIFIED.