

DUST MITIGATION PLAN

Date: January 13, 2022

Location: WR OGDP 2 / Wells Ranch CDP / A12-07
Facility

Legal Description: SWNE Section 12, Township 6 North, Range 64 West, Weld County, Colorado



[Table of Contents](#)

Article I. Introduction	2
Facility Information	2
Article II. Dust Mitigation Plan Specific Data	2
Truck Traffic	3
Article III. Mitigation Measures and Best Management Practices (BMP)	3
Article IV. Cumulative Dust Impacts	5
Article V. Exhibits/References/Appendices	6

Article I. Introduction

Facility Information

This document provides site-specific information for the A12-07 Facility within the WR OGD 2 of the Wells Ranch CDP. The information in this document relates specifically to the time during the construction of this location and the construction, drilling, completion, and production of the seventeen (17) proposed horizontal wells producing to this location.

The proposed location is irrigated range northwest of the intersection of WCR 61 and WCR 70. The Pad will be in the SWNE of Section 12, Township 6 North, Range 64 West, zoned agricultural within the Weld County Near-Urban Planning Area. A 1041 WOGLA was filed for the CDP as 1041WOGLA19-0042 on 12/10/2019 and recorded at reception #4556398 on 1/8/2020. Site-specific supplemental information will be filed with Weld County prior to commencement of operations.

The proposed A12-07 Facility oil and gas location disturbance will be 7.4 acres which will not be reduced after interim reclamation. The proposed working pad surface will be 2.9 acres. The A12-07 Facility is on Parcel 80112100001 owned by Case P Gabel. The location is currently used for rangeland.

The proposed A12-07 Facility will accept production from wells on the A12-02 Pad and the A12-10 Pad. The proposed A12-07 Facility equipment will include separators, vapor recovery units (VRUs), gas compressor(s), VOC combustors, a maintenance tank, surge vessels, pump skids, and proposed electrical and/or solar equipment.

Phase	Duration (days)	Estimated Start Date
Construction	60 days	2nd Quarter, 2024
Drilling	0 days	3rd Quarter, 2024
Completion	0 days	4th Quarter, 2025
Flowback	N/A	Flowing back to production facility
Production	30 years	4th Quarter, 2025
Interim Reclamation	60 days	3rd Quarter, 2026

Article II. Dust Mitigation Plan Specific Data

Facility Soil type(s): 72 - Vona loamy sand, 0 to 3 percent slopes; 52 - Otero sandy loam, 3 to 5 percent slopes; 73 - Vona loamy sand, 3 to 5 percent slopes; 76 - Vona sandy loam, 1 to 3 percent slopes

Access Soil type(s)*: 51 - Otero sandy loam, 1 to 3 percent slopes; 73 - Vona loamy sand, 3 to 5 percent slopes; 76 - Vona sandy loam, 1 to 3 percent slopes

Flowline Corridor Soil type(s)*: 51 - Otero sandy loam, 1 to 3 percent slopes; 73 - Vona loamy sand, 3 to 5 percent slopes; 76 - Vona sandy loam, 1 to 3 percent slopes

**NRCS data is not accurate at scale for access roads and flowline corridor, and flowline is partially co-located underneath access road.*

Total area of soil disturbance in acres including accesses, and flowline corridors: approximately 9.5 acres.

Haul route is not paved for 2 acres from existing access onto WCR 70 as depicted on Access Road Map.

Truck Traffic

During the initial 45 days of construction operations, the expected number of roundtrips during set up will be approximately 130 Semi-Truck/Trailer/Tandems trips and 120 Passenger Car/Pickups. For the remaining 100 days, Passenger Car/Pickups will be reduced to 90 trips per day and Semi-Truck/Trailer and Tandem Trucks to 85 trips per day.

During the production phase of operations, there will be no heavy truck trips. There will be approximately 23,760 pickup trips estimated for 30 years of production for the two wells pads and associated facility. During the interim reclamation phase of 60 days, there will be 800 heavy truck roundtrips.

The expected travel route for the proposed oil and gas location is indicated on the attached Access Road Map. The travel distribution from the proposed oil and gas location will be primarily on County Road 70.

<u>Vehicle Type</u>	Construction			
	Duration		Round Trips	
	Setup/Breakdown	Rest of Phase	Setup/Breakdown	Rest of Phase
Passenger Car/Pickup	45 days	100 days	120	90
Tandem Trucks			30	10
Semi-Truck/Trailer/RV			100	75

Article III. Mitigation Measures and Best Management Practices (BMP)

Noble Energy shall employ practices for control of fugitive dust caused by their operations. Such practices shall include but are not limited to the use of speed restrictions, automation of wells and production facilities, regular road maintenance, pipeline infrastructure to provide takeaway for oil, gas, and produced water (reducing number of trips from heavy trucks), consolidation of production facilities (reducing excessive driving on undeveloped/unpaved roads), restriction of construction activity during high-wind days, and silica dust controls* when handling sand used in hydraulic fracturing operations. Noble Energy additionally has implemented the use of traffic signs when leaving the location to remind drivers of specific routes to utilize.

**Silica dust control will include dust suppression with non-potable water, well-ventilated work site, pre-planned personnel rotation of work site, as well as other recommended measures included in OSHA Standard 29 CFR 1926.1153 Respirable Crystalline Silica*

- When Noble Energy is required to suppress dust, its selected vendor will be reminded of the following:
 - Only use fresh water source (non-potable) when watering areas within 300 feet of the ordinary high-water mark of any water body.
 - Maintain a current Safety Data Sheet (SDS) in their company vehicle when using a dust suppressor containing chemicals, in accordance with OSHA Standard 29 CFR 1910.1200 (Hazard Communication) as well as local and State requirements.
 - Ensure watering practices are not creating additional hazards on access roads (slick roads, muddy conditions, etc.)
- All soil piles created by construction activities will be managed utilizing Hydro-mulch, straw crimping, and/or tracking methods to prevent dust from exiting location and creating a hazard during pre-production activities. Soil piles will be graded and/or seeded to prevent erosion and the generation of dust post-production.
- Noble Energy will minimize the amount of fugitive dust using speed restrictions. All vehicles will be subject to a speed limit of 20 MPH on all lease roads to minimize dust.
- Noble Energy will mitigate the creation of fugitive dust through regular road maintenance as coordinated through agreements with Relevant Local Governments or Agencies with road jurisdiction.
- Noble Energy will use methods including wind breaks and barriers, road or facility surfacing, and soil stockpile stabilization measures to suppress fugitive dust caused solely by wind.
- Noble Energy will avoid the creation of fugitive dust by restricting or limiting construction activity during high wind days.
- Noble Energy will minimize fugitive dust caused by their operations, or dust originating from areas disturbed by their Oil and Gas Operations that becomes windborne by ceasing all ongoing truck traffic and ensure all previously listed BMP are implemented.
- Noble Energy will not use any of the following fluids for dust suppression:
 - Produced water
 - E&P waste or hazardous waste
 - Crude oil or any oil specifically designed for road maintenance
 - Chemical solvents
 - Process fluids
- Access road(s) will be watered or treated with one of the following commercial dust suppressants, as needed:
 - Roadsaver
 - Roadsaver Compaction Aid
 - DuraBlend

- Prior to the application of dust suppressant to any county or public roads, coordination will be conducted with Weld County Department of Public Works by Noble Energy and any relevant vendors.
- Noble Energy will maintain safety data sheets (“SDS”) for any chemical-based dust suppressant and make the SDS available immediately upon request to the COGCC Director and to the Local Government. Operators will maintain SDS for any chemical-based dust suppressant until the site passes final site Reclamation and transfer the records upon transfer of property ownership.
- All secondary roads created for this project (non-public roadways) will be finished with ½” – ¾” crushed stone road base.
- Prior to the commencement of Production Operations, Noble will take all necessary and reasonable precautions to ensure that lighting, dust, noise and odor from the Oil and Gas Location does not unnecessarily impact the health, safety, and welfare of Wildlife occupying any High Priority Habitat within 2,000 feet of the Oil and Gas Location. For permanent facilities this includes:
 - Identify permanent and temporary housing of resident wildlife and ensure locations are recorded in wildlife reports kept in-house by HSE
 - Ensure the workday is limited to sunrise to sunset to avoid unnecessary nighttime lighting of big game habitat, nests and/or burrows.
 - Conduct a daily walkthrough of the location to ensure no wildlife have built nest(s) in/around lighting or noise sources. If nest(s) are found, HSE reporting will be issued to appropriate personnel to either remove the nest and/or temporarily abandon the lighting source until nest is abandoned.

Article IV. Cumulative Dust Impacts

The estimated number of anticipated truck trips for the Oil and Gas location seeking Commission approval combined with the number of anticipated truck trips at any other Oil and Gas Locations within a 1-mile radius is below, calculated using locations with anticipated construction, drilling, and completions. Construction of the A12-02 location, A12-10 location and A12-07 facility are anticipated to use the same unpaved roads as truck traffic. These locations will comprise the entirety of OGD 2.

- Construction – 425 trips for A12-07 Facility, 545 cumulative trips for OGD 2
- Drilling – 0 trips for A12-07 Facility, 3,720 cumulative trips for OGD 2
- Completion – 0 trips for A12-07 Facility, 5,621 cumulative trips for OGD 2
- Production – 23,760 cumulative trips over 30 years for OGD 2
- Interim Reclamation – 800 trips for A12-07 Facility, 2,400 cumulative trips for OGD 2

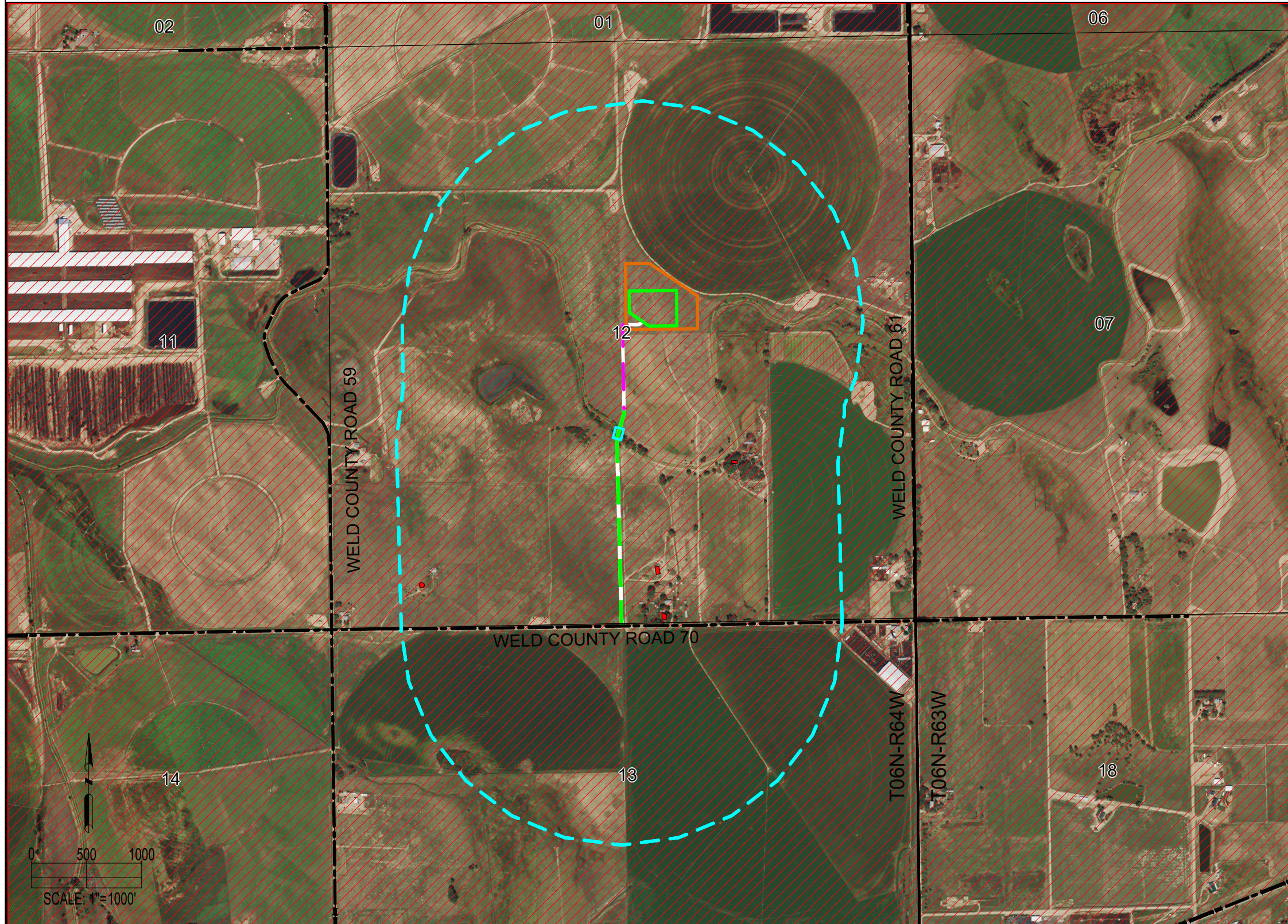
Construction and operational activities for the A12-02 location, A12-10 location and A12-07 facility are anticipated to overlap.

For this location there is an increased potential for dust generated from seasonal agricultural activities to the North/East/West/South. These activities should not negatively impact the public health, wildlife welfare and/or resources.

Article V. Exhibits/References/Appendices

Please see Access Road Map

A12-07 FACILITY ACCESS ROAD MAP



RESIDENTIAL BUILDING UNITS: (WITHIN 2000' ACCESS ROAD BUFFER)	
RESIDENTIAL BUILDING UNITS:	4
HIGH OCCUPANCY BUILDING UNITS:	0
SCHOOLS:	0
CHILD CARE CENTERS:	0

ACCESS ROAD LENGTH:	
PROPOSED ACCESS ROAD LENGTH:	±853'
FUTURE EXISTING ACCESS ROAD LENGTH:	±2072'

NOTE:
FUTURE EXISTING ACCESS WILL BE CONSTRUCTED FOR THE A12-10 PAD IN ADVANCE OF SUBJECT PAD CONSTRUCTION.

DISCLAIMER:
THIS PLOT DOES NOT REPRESENT A MONUMENTED LAND SURVEY AND SHOULD NOT BE RELIED UPON TO DETERMINE BOUNDARY LINES.
PROPERTY OWNERSHIP OR OTHER PROPERTY INTERESTS, PARCEL LINES, IF DEPICTED HAVE NOT BEEN FIELD VERIFIED AND MAY BE BASED
UPON PUBLICLY AVAILABLE DATA THAT ALSO HAS NOT BEEN INDEPENDENTLY VERIFIED.

8620 Wolff Court
Westminster, CO 80031
(303) 928-7128
www.ascentgeomatics.com

FIELD DATE: 05-21-21	DRAWING DATE: 12-17-21
DRAWN BY: IJM	CHECKED BY: CSG

SITE NAME:
A12-07 FACILITY
SURFACE LOCATION:
SW 1/4 NE 1/4 SEC. 12, T6N, R64W, 6TH P.M.
WELD COUNTY, COLORADO

DATA SOURCE:
AERIAL IMAGERY: NAIP 2019

PUBLICLY AVAILABLE DATA SOURCES HAVE NOT
BEEN INDEPENDENTLY VERIFIED BY ASCENT.

- LEGEND:**
- = PROPOSED ACCESS ROAD
 - = EXISTING PUBLIC ROAD
 - = SECTION LINE
 - = TOWNSHIP LINE

- = HIGH PRIORITY HABITAT
- = RESIDENTIAL BUILDING UNIT
- = 2000' ACCESS ROAD RADIUS
- = OIL & GAS LOCATION
- = WORKING PAD SURFACE

- = PROPOSED CULVERT
- = FUTURE EXISTING ACCESS ROAD

PREPARED FOR: