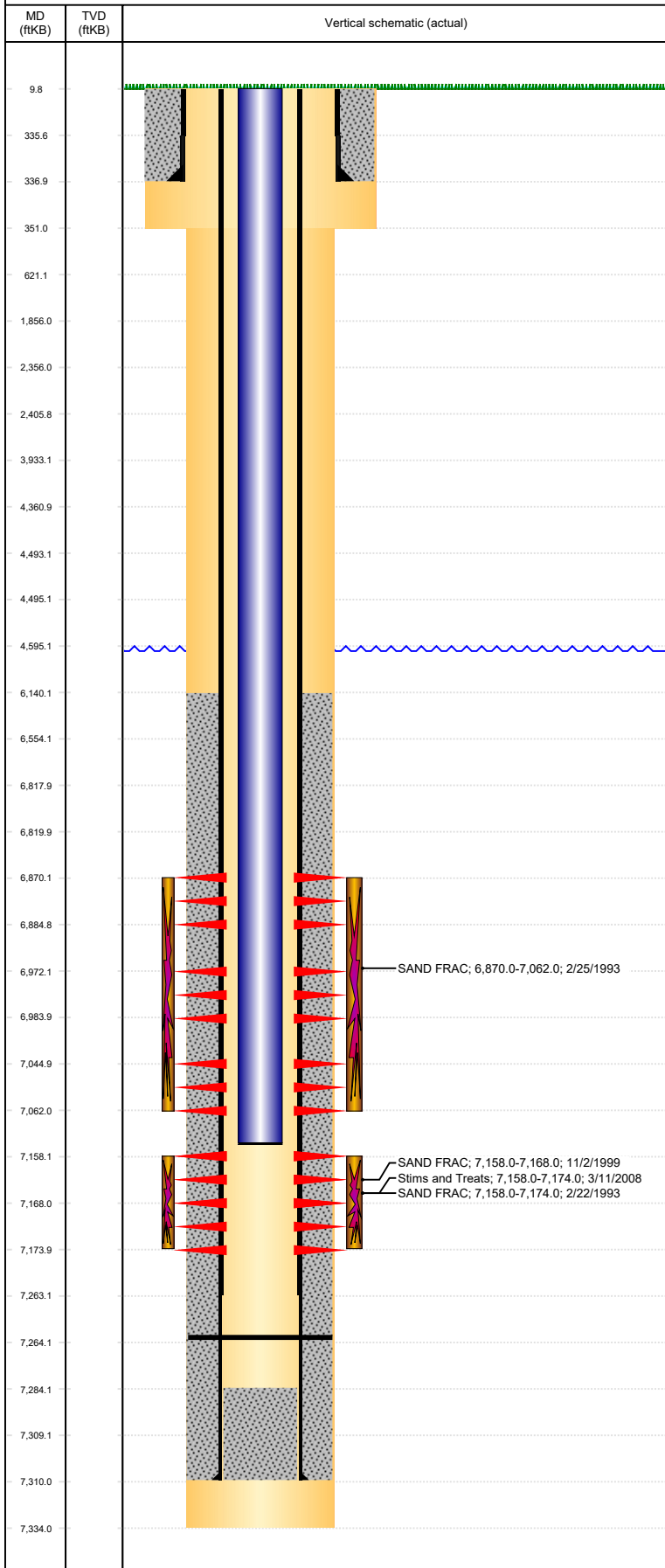


Well Name: GETZ 14-17

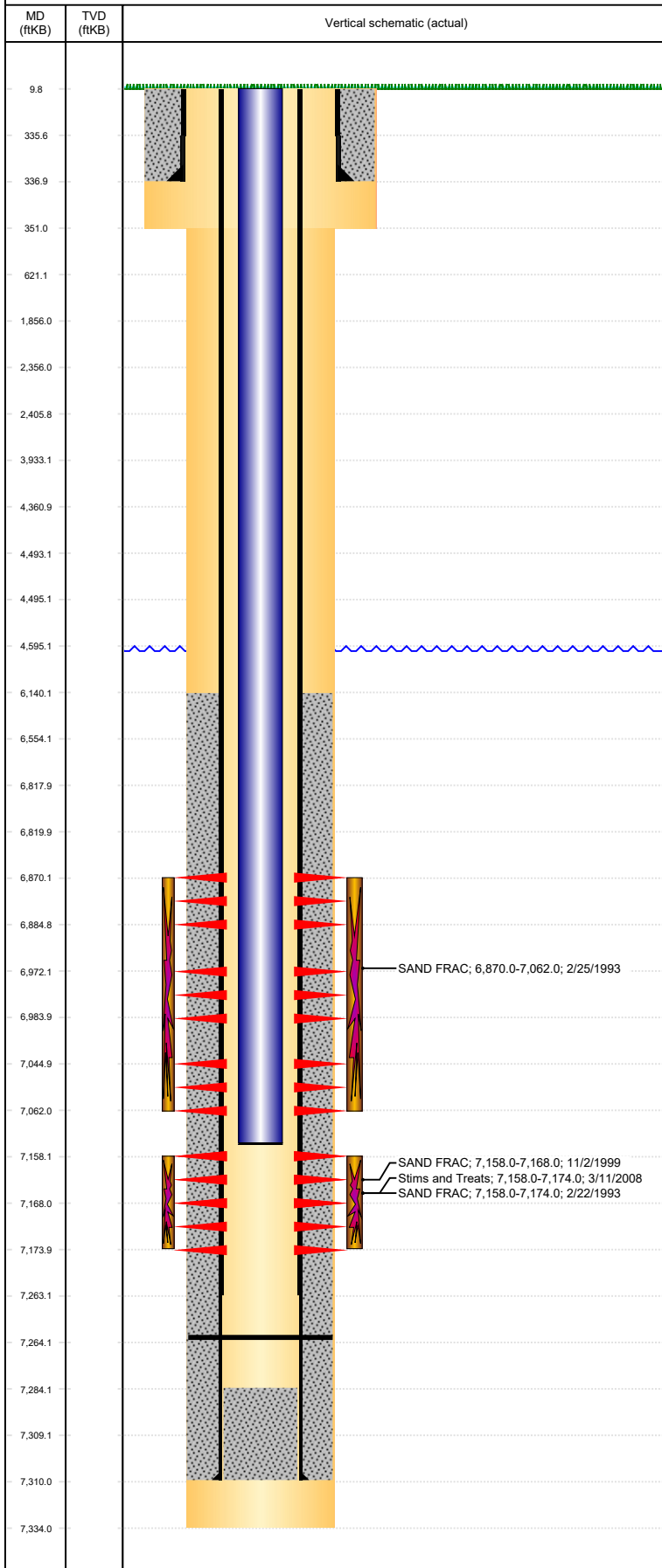
VERTICAL, ORIGINAL HOLE, 3/10/2022 10:39:49 AM



Well Header										
API 05-123-16768		Business Unit DJ BASIN		District 15		Well Config VERTICAL				
Original KB Elevation (ft) 4,760		KB - GL / MSL (ftKB) 10.00		Spud Date 2/8/1993		P & A Date				
Comment WELL DATA SKETCHY, CLEAN UP & LIMITED DATA										
Directions To Well										
Congressional Location										
Quarter 3 SE		Quarter 4 SW		Section 17	Township 4	Twnshp N/S Dir N	Range 65		Range E/W Dir W	
Bottom Hole Legal Location										
Bottom Hole Legal Location										
Plug Back Total Depths										
Date		Depth (ftKB)		Method		Com				
2/12/1993		7,264.0		CASING TALLY						
3/19/2008		7,264.0		TAG		CLEAN WELL TO PB, IT DID NOT STATE FTG				
Wellbore Sections										
Section Des				Size (in)		Act Top, MD (ftKB)		Act Btm, MD (ftKB)		
SURFACE				12 1/4		10		351		
PRODUCTION				7 7/8		351		7,334		
Zone Statuses										
Zone Name		Status Date		Status	Fluid Type	Job	Prod Method			
NIOBRARA		3/20/1993		PR	Water	DRILLING/CO...	Flowing			
NIOBRARA		3/6/2014		PR			Flowing			
NIOBRARA		6/13/2017		SI						
CODELL		3/20/1993		PR	Water	DRILLING/CO...	Flowing			
CODELL		11/2/1999		PR		RE-FRAC, 10/2...	Flowing			
CODELL		3/11/2008		PR		TRI-FRAC, 2/1...	Flowing			
CODELL		3/6/2014		PR			Flowing			
Casing Strings										
Surface, 337.0ftKB										
Casing Description Surface			Run Date 2/8/1993		OD (in) 8 5/8	Wt/Len (l... 24.00	Grade	Top, MD (ft... 10.0	MD (ftKB) 337.0	
Production, 7,310.0ftKB										
Casing Description Production			Run Date 2/12/1993		OD (in) 4 1/2	Wt/Len (l... 11.60	Grade	Top, MD (ft... 10.0	MD (ftKB) 7,310.0	
Cement										
Description SURFACE CASING CEMENT						Top Depth (ftKB) 10.0		Bottom Depth (ftKB) 337.0		
Description PRODUCTION CASING CEMENT						Top Depth (ftKB) 6,140.0		Bottom Depth (ftKB) 7,310.0		
Tubing Strings										
Tubing Description PRODUCTION TUBING			Run Date 2/27/1993		String... 2 3/8	ID (in)	Wt (lb/ft)	Grade J55	Len (ft) 7,124.01	Set De...
Tubing Components										
Item Des			OD (in)	Wt (lb/ft)	Grade	Jts	Len (ft)	Btm (ftKB)	Btm (TVD) (ftKB)	
TUBING, J-55, 4.7			2 3/8		J55	218	7,122.01	7,132.0		
Wellbore Equipment, Seating Nipple, 2 3/8 , 4.7 ,			2 3/8		J55	1	1.00	7,133.0		
Wellbore Equipment, Notched Collar, , ppf, ,			2 3/8			1	1.00	7,134.0		
Tubing Description PRODUCTION TUBING			Run Date 3/19/2008		String... 2 3/8	ID (in) 1.87	Wt (lb/ft) 4.70	Grade J55	Len (ft) 7,124.00	Set De...
Tubing Components										
Item Des			OD (in)	Wt (lb/ft)	Grade	Jts	Len (ft)	Btm (ftKB)	Btm (TVD) (ftKB)	
Tubing			2 3/8	4.70	J55	218	7,122.00	7,132.0		
Wellbore Equipment, Seating Nipple, 2 3/8 , 4.7 ,			2 3/8	J55	1	1.00	7,133.0			

Well Name: GETZ 14-17

VERTICAL, ORIGINAL HOLE, 3/10/2022 10:39:49 AM



Tubing Components							
Item Des	OD (in)	Wt (lb/ft)	Grade	Jts	Len (ft)	Btm (ftKB)	Btm (TVD) (ftKB)
Wellbore Equipment, Notched Collar, , ppf, ,	2 3/8			1	1.00	7,134.0	

Other In Hole							Pr op R un a
Run Date	Des	Make	OD (in)	Top (ftKB)	Btm (ftKB)		

Logs				Top, MD (ftKB)	Btm, MD (ftKB)
Date	Type				
2/12/1993	GAMMA RAY			4,300.0	7,332.0
2/12/1993	INDUCTION			337.0	7,332.0
2/18/1993	GAMMA RAY			6,050.0	7,243.0

Perforation Data					
Linked Zone	Bnch/St g	Sum of Entered Shot Total	Top (ftKB)	Btm (ftKB)	Date
NIOBRARA, ORIGINAL HOLE		54	6,870.00	6,885.00	2/24/1993
NIOBRARA, ORIGINAL HOLE		54	6,972.00	6,984.00	2/24/1993
NIOBRARA, ORIGINAL HOLE		54	7,045.00	7,062.00	2/24/1993
CODELL, ORIGINAL HOLE		32	7,158.00	7,174.00	2/18/1993
CODELL, ORIGINAL HOLE		54	7,158.01	7,168.01	10/28/1999
Total		248			

Stimulation Intervals			
Interval...	Start Date	Primary Job Type	Zone
	2/22/1993	DRILLING/COMPLETION - ORIGINAL	CODELL, ORIGINAL HOLE
Technical Result		Tech Result Details	Tech Result Note
Comment			
Interval...	Start Date	Primary Job Type	Zone
	2/25/1993	DRILLING/COMPLETION - ORIGINAL	NIOBRARA, ORIGINAL HOLE
Technical Result		Tech Result Details	Tech Result Note
Comment			
Interval...	Start Date	Primary Job Type	Zone
	11/2/1999	RE-FRAC	
Technical Result		Tech Result Details	Tech Result Note
Comment			
Interval...	Start Date	Primary Job Type	Zone
	3/11/2008	TRI-FRAC	
Technical Result		Tech Result Details	Tech Result Note
Comment			