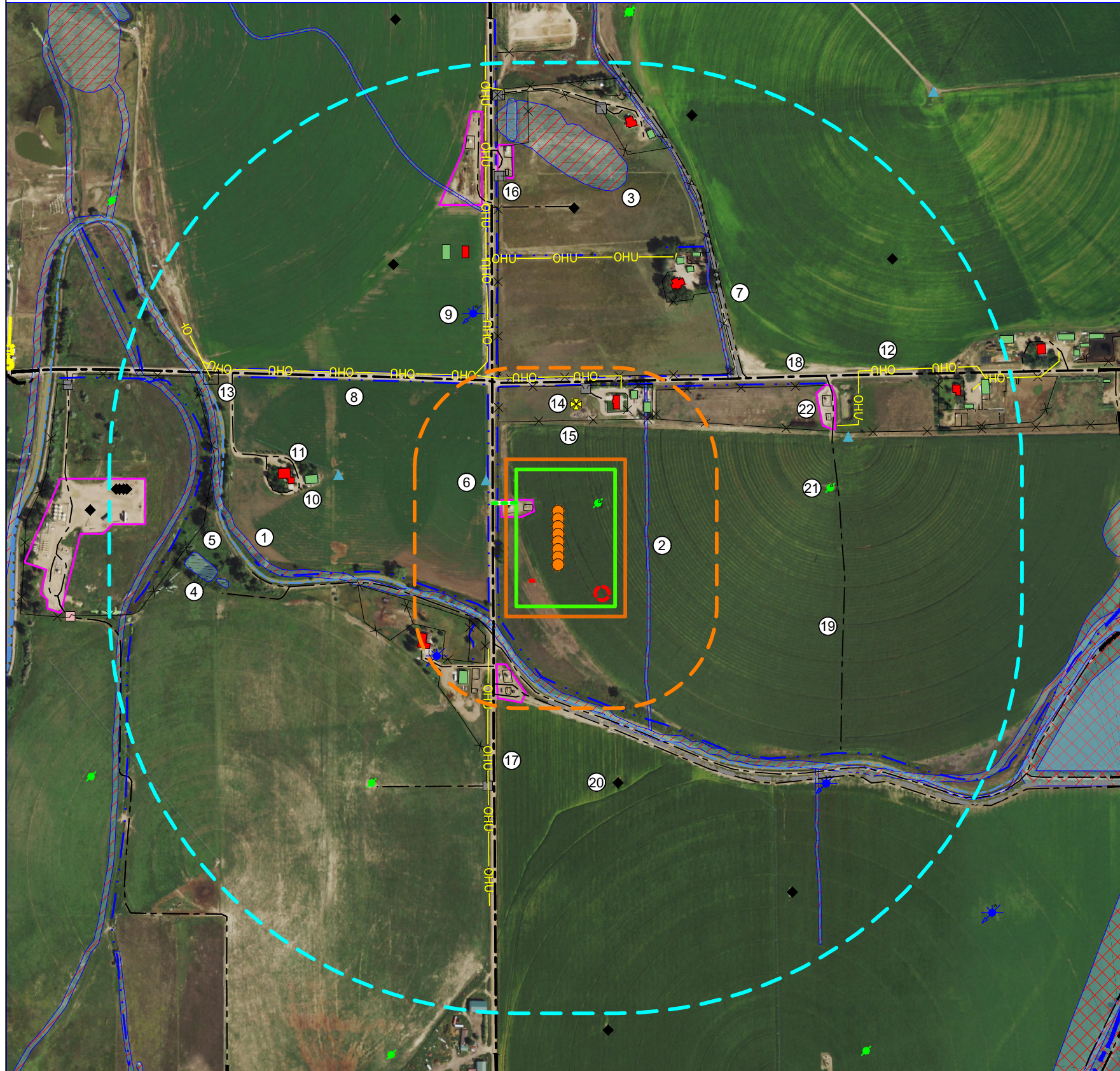
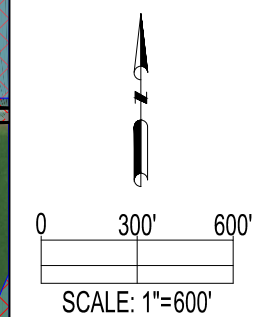


# A07-04 PAD LOCATION DRAWING



**IMPROVEMENTS:**  
(AS MEASURED FROM THE PROPOSED WORKING PAD SURFACE)

1. SEASONAL INTERMITTENT STREAMBED WETLAND:	±132' SW
2. PERENNIAL DITCH/CHANNEL WETLANDS:	±146' E, ±717' NE, ±1278' NW, ±1570' W, ±1269' SE, ±1713' SE
3. FRESHWATER EMERGENT WETLAND:	±1368' N
4. PONDS:	±1413' W, ±1469' W, ±1615' N
5. GREELEY NUMBER 2 CANAL:	±150' SW
6. PIVOT POINTS:	±149' W, ±873' W, ±1158' E
7. CONCRETE DITCHES:	±771' NE, ±469' S
8. DITCHES:	±136' W, ±89' W, ±138' W, ±226' SW, ±1528' W, ±1875' W, ±488' NW, ±447' N, ±1053' N, ±1119' NE
9. WATER WELLS:	±460' SW, ±796' NW, ±1354' SE
10. BUILDINGS:	±397' SW, ±974' W, ±1632' N, ±1033' N, ±1054' N, ±1116' N, ±315' N, ±355' N, ±1989' NE, ±1742' E, ±1840' E, ±1082' N
11. RESIDENTIAL BUILDING UNITS:	±460' SW, ±1091' W, ±297' N, ±1680' N, ±930' NE, ±1702' E, ±1066' N
12. OVERHEAD UTILITIES:	±250' SW, ±402' N, ±1114' E, ±507' NW, ±1037' N
13. UTILITY BOX:	±1567' NW
14. WINDMILL:	±321' N
15. FENCES:	±314' S, ±356' SW, ±208' SW, ±468' SW, ±487' SW, ±1481' W, ±235' N, ±453' N, ±1588' N, ±1832' N, ±1780' N, ±321' NE, ±1068' E, ±1608' E, ±1057' E, ±1637' SE
16. GATES:	±397' N, ±1772' N, ±1780' N, ±1842' N, ±1842' N, ±1444' N, ±1445' N, ±893' S
17. PUBLIC ROAD (WELD COUNTY ROAD 49):	±101' W
18. PUBLIC ROAD (WELD COUNTY ROAD 72):	±415' N
19. PRIVATE ROADS:	±1066' W, ±1112' W, ±181' SW, ±214' SW, ±315' S, ±387' S, ±434' S, ±889' S, ±1075' E, ±756' NE, ±785' NE, ±350' N, ±1642' N, ±1748' N, ±1292' N, ±1317' N, ±1477' N
20. EXISTING OIL & GAS WELLS:	±1913' W, ±1930' W, ±1950' W, ±1966' W, ±1174' NW, ±1285' N, ±1782' N, ±1711' NE, ±1653' SE, ±867' S
21. ABANDONED OIL & GAS WELLS:	±0', ±1057' E, ±1121' SW
22. EXISTING FACILITIES:	±0', ±1311' N, ±1432' N, ±1043' E, ±289' S, ±1824' W



DATA SOURCE:  
AERIAL IMAGERY: NAIP 2019  
WATER WELLS: COLORADO DWR  
NHD: USGS

PUBLICLY AVAILABLE DATA SOURCES HAVE NOT BEEN INDEPENDENTLY VERIFIED BY ASCENT.

**OIL & GAS SURFACE ACREAGE:**

10.4 ACRES OIL & GAS LOCATION  
7.5 ACRES WORKING PAD SURFACE  
2.2 ACRES INTERIM RECLAIM

**REFERENCE LOCATION**  
\*\*BRASKALAND A31-756\*\*

LAT: 40.50586° N  
LONG: 104.60049° W  
ELEVATION: 4723'  
642' FNL & 320' FWL  
PDOP: 1.4  
GPS OPERATOR: RYAN DESMOND

DISCLAIMER:  
THIS PLOT DOES NOT REPRESENT A MONUMENTED LAND SURVEY AND SHOULD NOT BE RELIED UPON TO DETERMINE BOUNDARY LINES, PROPERTY OWNERSHIP OR OTHER PROPERTY INTERESTS. PARCEL LINES, IF DEPICTED HAVE NOT BEEN FIELD VERIFIED AND MAY BE BASED UPON PUBLICLY AVAILABLE DATA THAT ALSO HAS NOT BEEN INDEPENDENTLY VERIFIED.

**CURRENT SURFACE USE: IRRIGATED CROP LAND**  
**FUTURE SURFACE USE: IRRIGATED CROP LAND**

8620 Wolff Court  
Westminster, CO 80031  
(303) 928-7128  
www.ascentgeomatics.com

**FIELD DATE:**  
06-03-19

**DRAWING DATE:**  
07-29-21

**DRAWN BY:**  
LNJ

**CHECKED BY:**  
IJM

**SITE NAME:**  
A07-04 PAD

**SURFACE LOCATION:**  
LOT 1 SEC. 7, T6N, R64W, 6TH P.M.  
WELD COUNTY, COLORADO

**LEGEND:**

= PROPOSED WELL	= PIVOT POINT	= CANAL	= DITCH	= CONCRETE DITCH	= PRIVATE ROAD	= 500' BUFFER FROM WPS	= BUILDING	= EXISTING FACILITY
= WATER WELL	= ELECTRICAL BOX	= FENCE	= DITCH	= PRIVATE ROAD	= PRIVATE ROAD	= 2000' BUFFER FROM WPS	= POND	= WORKING PAD SURFACE
= EXISTING WELL	= WINDMILL	= OVERHEAD UTILITY	= PRIVATE ROAD	= PRIVATE ROAD	= PRIVATE ROAD	= GATE	= PROPOSED FACILITY	= WETLAND
= PLUGGED & ABANDONED WELL	= PRIVATE ROAD	= PRIVATE ROAD	= PRIVATE ROAD	= PRIVATE ROAD	= PRIVATE ROAD	= WETLAND	= OIL & GAS LOCATION	= RESIDENTIAL BUILDING UNIT
	= PRIVATE ROAD	= PRIVATE ROAD	= PRIVATE ROAD	= PRIVATE ROAD	= PRIVATE ROAD	= WETLAND	= OIL & GAS LOCATION	= RESIDENTIAL BUILDING UNIT
	= PRIVATE ROAD	= PRIVATE ROAD	= PRIVATE ROAD	= PRIVATE ROAD	= PRIVATE ROAD	= WETLAND	= OIL & GAS LOCATION	= RESIDENTIAL BUILDING UNIT
	= PRIVATE ROAD	= PRIVATE ROAD	= PRIVATE ROAD	= PRIVATE ROAD	= PRIVATE ROAD	= WETLAND	= OIL & GAS LOCATION	= RESIDENTIAL BUILDING UNIT
	= PRIVATE ROAD	= PRIVATE ROAD	= PRIVATE ROAD	= PRIVATE ROAD	= PRIVATE ROAD	= WETLAND	= OIL & GAS LOCATION	= RESIDENTIAL BUILDING UNIT
	= PRIVATE ROAD	= PRIVATE ROAD	= PRIVATE ROAD	= PRIVATE ROAD	= PRIVATE ROAD	= WETLAND	= OIL & GAS LOCATION	= RESIDENTIAL BUILDING UNIT
	= PRIVATE ROAD	= PRIVATE ROAD	= PRIVATE ROAD	= PRIVATE ROAD	= PRIVATE ROAD	= WETLAND	= OIL & GAS LOCATION	= RESIDENTIAL BUILDING UNIT
	= PRIVATE ROAD	= PRIVATE ROAD	= PRIVATE ROAD	= PRIVATE ROAD	= PRIVATE ROAD	= WETLAND	= OIL & GAS LOCATION	= RESIDENTIAL BUILDING UNIT
	= PRIVATE ROAD	= PRIVATE ROAD	= PRIVATE ROAD	= PRIVATE ROAD	= PRIVATE ROAD	= WETLAND	= OIL & GAS LOCATION	= RESIDENTIAL BUILDING UNIT
	= PRIVATE ROAD	= PRIVATE ROAD	= PRIVATE ROAD	= PRIVATE ROAD	= PRIVATE ROAD	= WETLAND	= OIL & GAS LOCATION	= RESIDENTIAL BUILDING UNIT
	= PRIVATE ROAD	= PRIVATE ROAD	= PRIVATE ROAD	= PRIVATE ROAD	= PRIVATE ROAD	= WETLAND	= OIL & GAS LOCATION	= RESIDENTIAL BUILDING UNIT
	= PRIVATE ROAD	= PRIVATE ROAD	= PRIVATE ROAD	= PRIVATE ROAD	= PRIVATE ROAD	= WETLAND	= OIL & GAS LOCATION	= RESIDENTIAL BUILDING UNIT
	= PRIVATE ROAD	= PRIVATE ROAD	= PRIVATE ROAD	= PRIVATE ROAD	= PRIVATE ROAD	= WETLAND	= OIL & GAS LOCATION	= RESIDENTIAL BUILDING UNIT
	= PRIVATE ROAD	= PRIVATE ROAD	= PRIVATE ROAD	= PRIVATE ROAD	= PRIVATE ROAD	= WETLAND	= OIL & GAS LOCATION	= RESIDENTIAL BUILDING UNIT
	= PRIVATE ROAD	= PRIVATE ROAD	= PRIVATE ROAD	= PRIVATE ROAD	= PRIVATE ROAD	= WETLAND	= OIL & GAS LOCATION	= RESIDENTIAL BUILDING UNIT
	= PRIVATE ROAD	= PRIVATE ROAD	= PRIVATE ROAD	= PRIVATE ROAD	= PRIVATE ROAD	= WETLAND	= OIL & GAS LOCATION	= RESIDENTIAL BUILDING UNIT
	= PRIVATE ROAD	= PRIVATE ROAD	= PRIVATE ROAD	= PRIVATE ROAD	= PRIVATE ROAD	= WETLAND	= OIL & GAS LOCATION	= RESIDENTIAL BUILDING UNIT
	= PRIVATE ROAD	= PRIVATE ROAD	= PRIVATE ROAD	= PRIVATE ROAD	= PRIVATE ROAD	= WETLAND	= OIL & GAS LOCATION	= RESIDENTIAL BUILDING UNIT
	= PRIVATE ROAD	= PRIVATE ROAD	= PRIVATE ROAD	= PRIVATE ROAD	= PRIVATE ROAD	= WETLAND	= OIL & GAS LOCATION	= RESIDENTIAL BUILDING UNIT
	= PRIVATE ROAD	= PRIVATE ROAD	= PRIVATE ROAD	= PRIVATE ROAD	= PRIVATE ROAD	= WETLAND	= OIL & GAS LOCATION	= RESIDENTIAL BUILDING UNIT
	= PRIVATE ROAD	= PRIVATE ROAD	= PRIVATE ROAD	= PRIVATE ROAD	= PRIVATE ROAD	= WETLAND	= OIL & GAS LOCATION	= RESIDENTIAL BUILDING UNIT
	= PRIVATE ROAD	= PRIVATE ROAD	= PRIVATE ROAD	= PRIVATE ROAD	= PRIVATE ROAD	= WETLAND	= OIL & GAS LOCATION	= RESIDENTIAL BUILDING UNIT
	= PRIVATE ROAD	= PRIVATE ROAD	= PRIVATE ROAD	= PRIVATE ROAD	= PRIVATE ROAD	= WETLAND	= OIL & GAS LOCATION	= RESIDENTIAL BUILDING UNIT
	= PRIVATE ROAD	= PRIVATE ROAD	= PRIVATE ROAD	= PRIVATE ROAD	= PRIVATE ROAD	= WETLAND	= OIL & GAS LOCATION	= RESIDENTIAL BUILDING UNIT
	= PRIVATE ROAD	= PRIVATE ROAD	= PRIVATE ROAD	= PRIVATE ROAD	= PRIVATE ROAD	= WETLAND	= OIL & GAS LOCATION	= RESIDENTIAL BUILDING UNIT
	= PRIVATE ROAD	= PRIVATE ROAD	= PRIVATE ROAD	= PRIVATE ROAD	= PRIVATE ROAD	= WETLAND	= OIL & GAS LOCATION	= RESIDENTIAL BUILDING UNIT
	= PRIVATE ROAD	= PRIVATE ROAD	= PRIVATE ROAD	= PRIVATE ROAD	= PRIVATE ROAD	= WETLAND	= OIL & GAS LOCATION	= RESIDENTIAL BUILDING UNIT
	= PRIVATE ROAD	= PRIVATE ROAD	= PRIVATE ROAD	= PRIVATE ROAD	= PRIVATE ROAD	= WETLAND	= OIL & GAS LOCATION	= RESIDENTIAL BUILDING UNIT
	= PRIVATE ROAD	= PRIVATE ROAD	= PRIVATE ROAD	= PRIVATE ROAD	= PRIVATE ROAD	= WETLAND	= OIL & GAS LOCATION	= RESIDENTIAL BUILDING UNIT
	= PRIVATE ROAD	= PRIVATE ROAD	= PRIVATE ROAD	= PRIVATE ROAD	= PRIVATE ROAD	= WETLAND	= OIL & GAS LOCATION	= RESIDENTIAL BUILDING UNIT
	= PRIVATE ROAD	= PRIVATE ROAD	= PRIVATE ROAD	= PRIVATE ROAD	= PRIVATE ROAD	= WETLAND	= OIL & GAS LOCATION	= RESIDENTIAL BUILDING UNIT
	= PRIVATE ROAD	= PRIVATE ROAD	= PRIVATE ROAD	= PRIVATE ROAD	= PRIVATE ROAD	= WETLAND	= OIL & GAS LOCATION	= RESIDENTIAL BUILDING UNIT
	= PRIVATE ROAD	= PRIVATE ROAD	= PRIVATE ROAD	= PRIVATE ROAD	= PRIVATE ROAD	= WETLAND	= OIL & GAS LOCATION	= RESIDENTIAL BUILDING UNIT
	= PRIVATE ROAD	= PRIVATE ROAD	= PRIVATE ROAD	= PRIVATE ROAD	= PRIVATE ROAD	= WETLAND	= OIL & GAS LOCATION	= RESIDENTIAL BUILDING UNIT
	= PRIVATE ROAD	= PRIVATE ROAD	= PRIVATE ROAD	= PRIVATE ROAD	= PRIVATE ROAD	= WETLAND	= OIL & GAS LOCATION	= RESIDENTIAL BUILDING UNIT
	= PRIVATE ROAD	= PRIVATE ROAD	= PRIVATE ROAD	= PRIVATE ROAD	= PRIVATE ROAD	= WETLAND	= OIL & GAS LOCATION	= RESIDENTIAL BUILDING UNIT
	= PRIVATE ROAD	= PRIVATE ROAD	= PRIVATE ROAD	= PRIVATE ROAD	= PRIVATE ROAD	= WETLAND	= OIL & GAS LOCATION	= RESIDENTIAL BUILDING UNIT
	= PRIVATE ROAD	= PRIVATE ROAD	= PRIVATE ROAD	= PRIVATE ROAD	= PRIVATE ROAD	= WETLAND	= OIL & GAS LOCATION	= RESIDENTIAL BUILDING UNIT
	= PRIVATE ROAD	= PRIVATE ROAD	= PRIVATE ROAD	= PRIVATE ROAD	= PRIVATE ROAD	= WETLAND	= OIL & GAS LOCATION	= RESIDENTIAL BUILDING UNIT
	= PRIVATE ROAD	= PRIVATE ROAD	= PRIVATE ROAD	= PRIVATE ROAD	= PRIVATE ROAD	= WETLAND	= OIL & GAS LOCATION	= RESIDENTIAL BUILDING UNIT
	= PRIVATE ROAD	= PRIVATE ROAD	= PRIVATE ROAD	= PRIVATE ROAD	= PRIVATE ROAD	= WETLAND	= OIL & GAS LOCATION	= RESIDENTIAL BUILDING UNIT
	= PRIVATE ROAD	= PRIVATE ROAD	= PRIVATE ROAD	= PRIVATE ROAD	= PRIVATE ROAD	= WETLAND	= OIL & GAS LOCATION	= RESIDENTIAL BUILDING UNIT
	= PRIVATE ROAD	= PRIVATE ROAD	= PRIVATE ROAD	= PRIVATE ROAD	= PRIVATE ROAD	= WETLAND	= OIL & GAS LOCATION	= RESIDENTIAL BUILDING UNIT
	= PRIVATE ROAD	= PRIVATE ROAD	= PRIVATE ROAD	= PRIVATE ROAD	= PRIVATE ROAD	= WETLAND	= OIL & GAS LOCATION	= RESIDENTIAL BUILDING UNIT
	= PRIVATE ROAD	= PRIVATE ROAD	= PRIVATE ROAD	= PRIVATE ROAD	= PRIVATE ROAD	= WETLAND	= OIL & GAS LOCATION	= RESIDENTIAL BUILDING UNIT
	= PRIVATE ROAD	= PRIVATE ROAD	= PRIVATE ROAD	= PRIVATE ROAD	= PRIVATE ROAD	= WETLAND	= OIL & GAS LOCATION	= RESIDENTIAL BUILDING UNIT
	= PRIVATE ROAD	= PRIVATE ROAD	= PRIVATE ROAD	= PRIVATE ROAD	= PRIVATE ROAD	= WETLAND	= OIL & GAS LOCATION	= RESIDENTIAL BUILDING UNIT
	= PRIVATE ROAD	= PRIVATE ROAD	= PRIVATE ROAD	= PRIVATE ROAD	= PRIVATE ROAD	= WETLAND	= OIL & GAS LOCATION	= RESIDENTIAL BUILDING UNIT
	= PRIVATE ROAD	= PRIVATE ROAD	= PRIVATE ROAD	= PRIVATE ROAD	= PRIVATE ROAD	= WETLAND	= OIL & GAS LOCATION	= RESIDENTIAL BUILDING UNIT
	= PRIVATE ROAD	= PRIVATE ROAD	= PRIVATE ROAD	= PRIVATE ROAD	= PRIVATE ROAD	= WETLAND	= OIL & GAS LOCATION	= RESIDENTIAL BUILDING UNIT
	= PRIVATE ROAD	= PRIVATE ROAD	= PRIVATE ROAD	= PRIVATE ROAD	= PRIVATE ROAD	= WETLAND	= OIL & GAS LOCATION	= RESIDENTIAL BUILDING UNIT
	= PRIVATE ROAD	= PRIVATE ROAD	= PRIVATE ROAD	= PRIVATE ROAD	= PRIVATE ROAD	= WETLAND	= OIL & GAS LOCATION	= RESIDENTIAL BUILDING UNIT
	= PRIVATE ROAD	= PRIVATE ROAD	= PRIVATE ROAD	= PRIVATE ROAD	= PRIVATE ROAD	= WETLAND	= OIL & GAS LOCATION	= RESIDENTIAL BUILDING UNIT
	= PRIVATE ROAD	= PRIVATE ROAD	= PRIVATE ROAD	= PRIVATE ROAD	= PRIVATE ROAD	= WETLAND	= OIL & GAS LOCATION	= RESIDENTIAL BUILDING UNIT
	= PRIVATE ROAD	= PRIVATE ROAD	= PRIVATE ROAD	= PRIVATE ROAD	= PRIVATE ROAD	= WETLAND	= OIL & GAS LOCATION	= RESIDENTIAL BUILDING UNIT
	= PRIVATE ROAD	= PRIVATE ROAD	= PRIVATE ROAD	= PRIVATE ROAD	= PRIVATE ROAD	= WETLAND	= OIL & GAS LOCATION	= RESIDENTIAL BUILDING UNIT
	= PRIVATE ROAD	= PRIVATE ROAD	= PRIVATE ROAD	= PRIVATE ROAD	= PRIVATE ROAD	= WETLAND	= OIL & GAS LOCATION	= RESIDENTIAL BUILDING UNIT
	= PRIVATE ROAD	= PRIVATE ROAD	= PRIVATE ROAD	= PRIVATE ROAD	= PRIVATE ROAD	= WETLAND	= OIL & GAS LOCATION	= RESIDENTIAL BUILDING UNIT
	= PRIVATE ROAD	= PRIVATE ROAD	= PRIVATE ROAD	= PRIVATE ROAD	= PRIVATE ROAD	= WETLAND	= OIL & GAS LOCATION	= RESIDENTIAL BUILDING UNIT
	= PRIVATE ROAD	= PRIVATE ROAD	= PRIVATE ROAD	= PRIVATE ROAD	= PRIVATE ROAD	= WETLAND	= OIL & GAS LOCATION	= RESIDENTIAL BUILDING UNIT
	= PRIVATE ROAD	= PRIVATE ROAD	= PRIVATE ROAD	= PRIVATE ROAD	= PRIVATE ROAD	= WETLAND	= OIL & GAS LOCATION	= RESIDENTIAL BUILDING UNIT
	= PRIVATE ROAD	= PRIVATE ROAD	= PRIVATE ROAD	= PRIVATE ROAD	= PRIVATE ROAD	= WETLAND	= OIL & GAS LOCATION	= RESIDENTIAL BUILDING UNIT
	= PRIVATE ROAD	<						