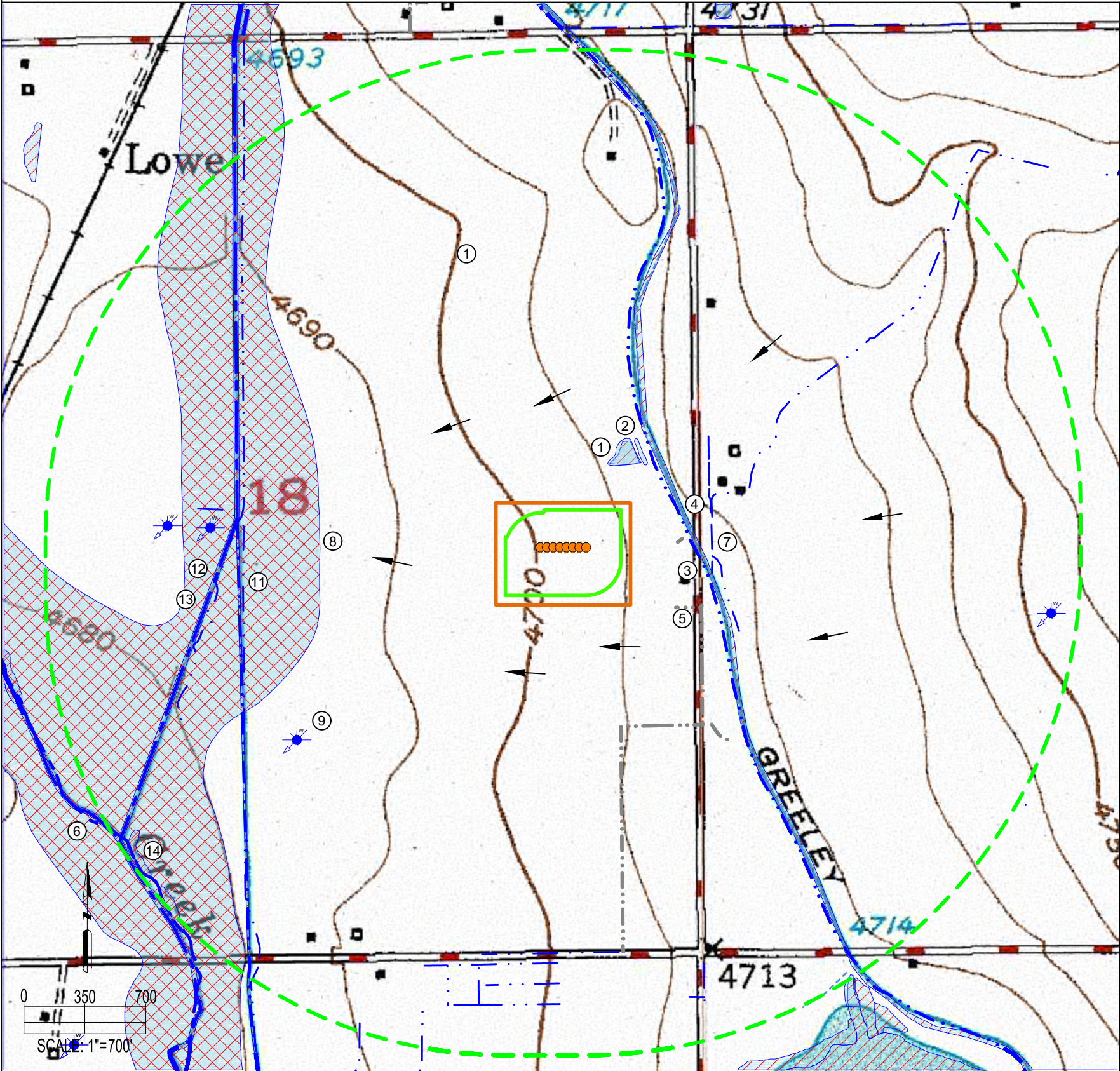


A18-09 PAD  
HYDROLOGY MAP



IMPROVEMENTS:  
(AS MEASURED FROM THE PROPOSED WORKING PAD SURFACE)

1. SEMIPERMANENTLY FLOODED FRESHWATER POND (MAPPED BY USFWS):	±261' N
2. FRESHWATER POND (MAPPED BY ASCENT):	±292' N, ±2620' SE
3. INTERMITTENT STREAMBED WETLAND (MAPPED BY USFWS):	±304' E
4. GREELEY NUMBER 2 CANAL:	±318' E
5. CONCRETE DITCH:	±381' SE, ±511' E, ±773' S, ±773' S, ±985' SE
6. LONE TREE CREEK:	±2625' SW
7. DITCH:	±522' E, ±524' E, ±1502' W, ±2050' S, ±2111' S, ±2125' S, ±2226' S, ±2345' S, ±2385' S, ±2595' S
8. FLOODPLAIN:	±1064' W
9. WATER WELL:	±1456' SW, ±1695' W, ±1940' W, ±2487' W
10. PIVOT POINT:	±1494' N, ±1851' E, ±2435' NE
11. SEMIPERMANENTLY FLOODED RIVERINE WETLAND (MAPPED BY USFWS):	±1521' W
12. PERMANENTLY FLOODED RIVERINE WETLAND (MAPPED BY USFWS):	±1531' W
13. WILLOW CREEK:	±1544' W
14. FRESHWATER EMERGENT WETLAND (MAPPED BY USFWS):	±2497' SW, ±2578' SW

THERE ARE NO PUBLIC WATER SYSTEMS FACILITIES, PWS INTAKES <15 MILES UPSTREAM, OR RULE 411 BUFFER ZONES WITHIN THE 2,640' RADIUS

NEAREST WATER WELL INFO:  
(AS MEASURED FROM THE NEAREST EDGE OF THE PROPOSED WORKING PAD SURFACE)

PERMIT #	RECEIPT #	STATIC WATER LEVEL	DISTANCE/DIRECTION
103949	0098987	N/A	±1456' SW
183323	0375887	85'	±1695' W

NEAREST SURFACE WATER FEATURE:  
(AS MEASURED FROM THE NEAREST EDGE OF THE PROPOSED WORKING PAD SURFACE)

SEMIPERMANENTLY FLOODED FRESHWATER POND (MAPPED BY USFWS)	±261' N
---	---------

DATA SOURCE:  
TOPO MAP: USGS  
WATER WELLS: COLORADO DWR  
NHD: USGS  
WETLANDS: USFWS  
FLOODPLAINS: FEMA  
PWS/RULE 411 BUFFERS: COGCC/CDPHE

PUBLICLY AVAILABLE DATA SOURCES HAVE NOT BEEN INDEPENDENTLY VERIFIED BY ASCENT.

DISCLAIMER:  
THIS PLOT DOES NOT REPRESENT A MONUMENTED LAND SURVEY AND SHOULD NOT BE RELIED UPON TO DETERMINE BOUNDARY LINES, PROPERTY OWNERSHIP OR OTHER PROPERTY INTERESTS. PARCEL LINES, IF DEPICTED HAVE NOT BEEN FIELD VERIFIED AND MAY BE BASED UPON PUBLICLY AVAILABLE DATA THAT ALSO HAS NOT BEEN INDEPENDENTLY VERIFIED.



FIELD DATE: 06-03-19	DRAWING DATE: 08-02-21	SITE NAME: A18-09 PAD
DRAWN BY: JDH	CHECKED BY: IJM	SURFACE LOCATION: NE 1/4 SE 1/4 SEC. 18, T6N, R64W, 6TH P.M. WELD COUNTY, COLORADO

LEGEND:  
● = PROPOSED WELL  
★ = WATER WELL  
▲ = PIVOT POINT  
→ = FLOW DIRECTION

--- = CANAL  
--- = CONCRETE DITCH  
--- = DITCH  
--- = STREAM  
--- = FLOODPLAIN

--- = 2640' BUFFER FROM WPS  
--- = WORKING PAD SURFACE  
--- = OIL & GAS LOCATION  
--- = WETLAND  
--- = POND

