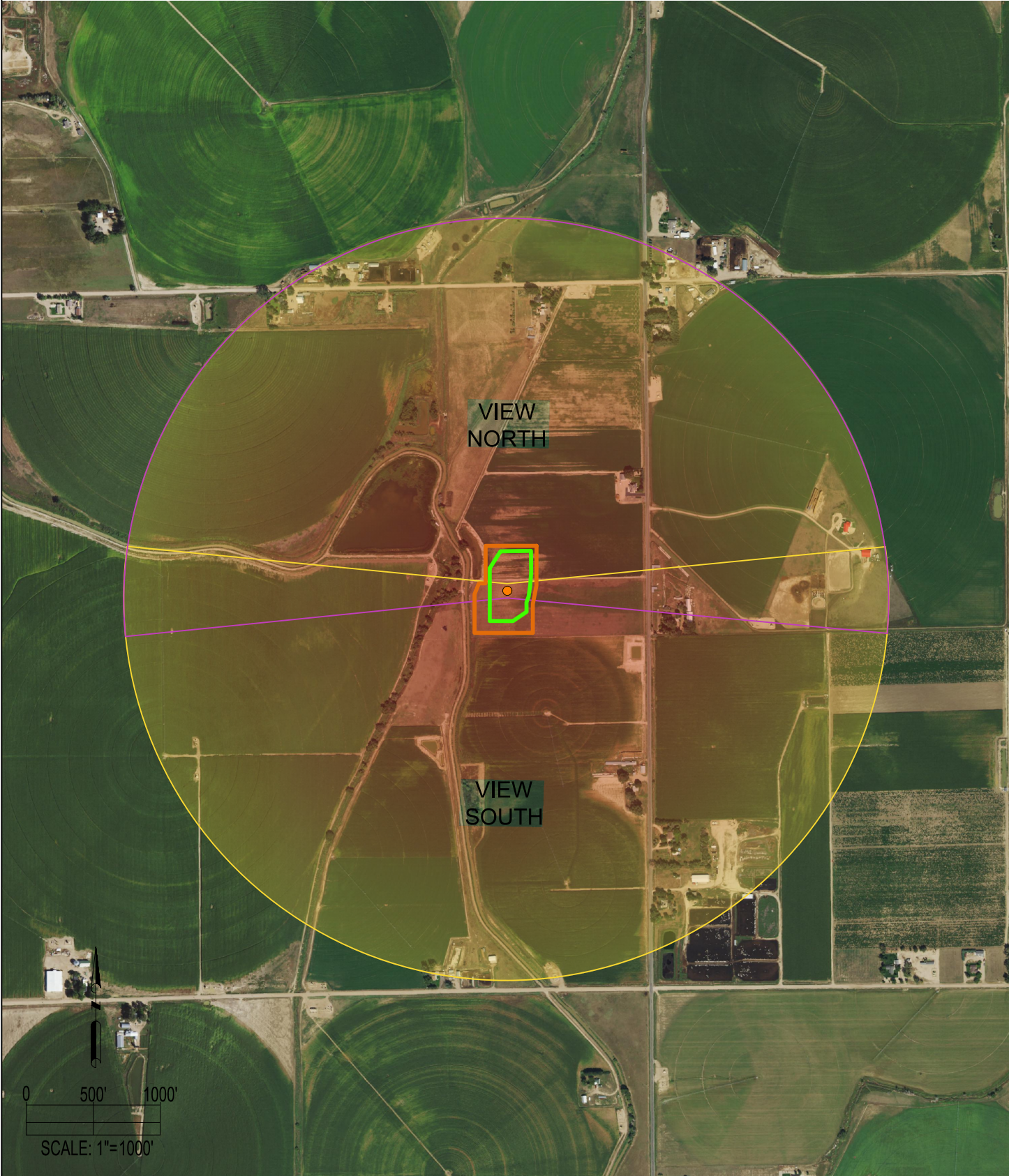


A07-08 FACILITY  
LOCATION PICTURES



LOCATION PICTURES:

NORTH VIEW (PANORAMIC)



SOUTH VIEW (PANORAMIC)



ALL PHOTOS WERE TAKEN ON 05/21/21.

REFERENCE POINT

LAT: 40.50149° N  
LONG: 104.58750° W  
ELEVATION: 4731'  
2271' FNL & 1060' FEL  
PDOP: 1.3  
GPS OPERATOR: RYAN DESMOND

DISCLAIMER:  
THIS PLOT DOES NOT REPRESENT A MONUMENTED LAND SURVEY AND SHOULD NOT BE RELIED UPON TO DETERMINE BOUNDARY LINES,  
PROPERTY OWNERSHIP OR OTHER PROPERTY INTERESTS. PARCEL LINES, IF DEPICTED HAVE NOT BEEN FIELD VERIFIED AND MAY BE BASED  
UPON PUBLICLY AVAILABLE DATA THAT ALSO HAS NOT BEEN INDEPENDENTLY VERIFIED.

LEGEND:

● = REFERENCE POINT

- = FIELD OF VIEW - NORTH
- = FIELD OF VIEW - SOUTH
- = OIL & GAS LOCATION
- = WORKING PAD SURFACE

FIELD  
DATE:  
06-03-19

DRAWING  
DATE:  
07-29-21

DRAWN BY:  
LNJ

CHECKED BY:  
IJM

SITE NAME:  
A07-08 FACILITY  
SURFACE LOCATION:  
SE 1/4 NE 1/4 SEC. 7, T6N, R64W, 6TH P.M.  
WELD COUNTY, COLORADO

DATA SOURCE:  
AERIAL IMAGERY: NAIP 2019  
  
PUBLICLY AVAILABLE DATA SOURCES HAVE NOT  
BEEN INDEPENDENTLY VERIFIED BY ASCENT.

PREPARED FOR: