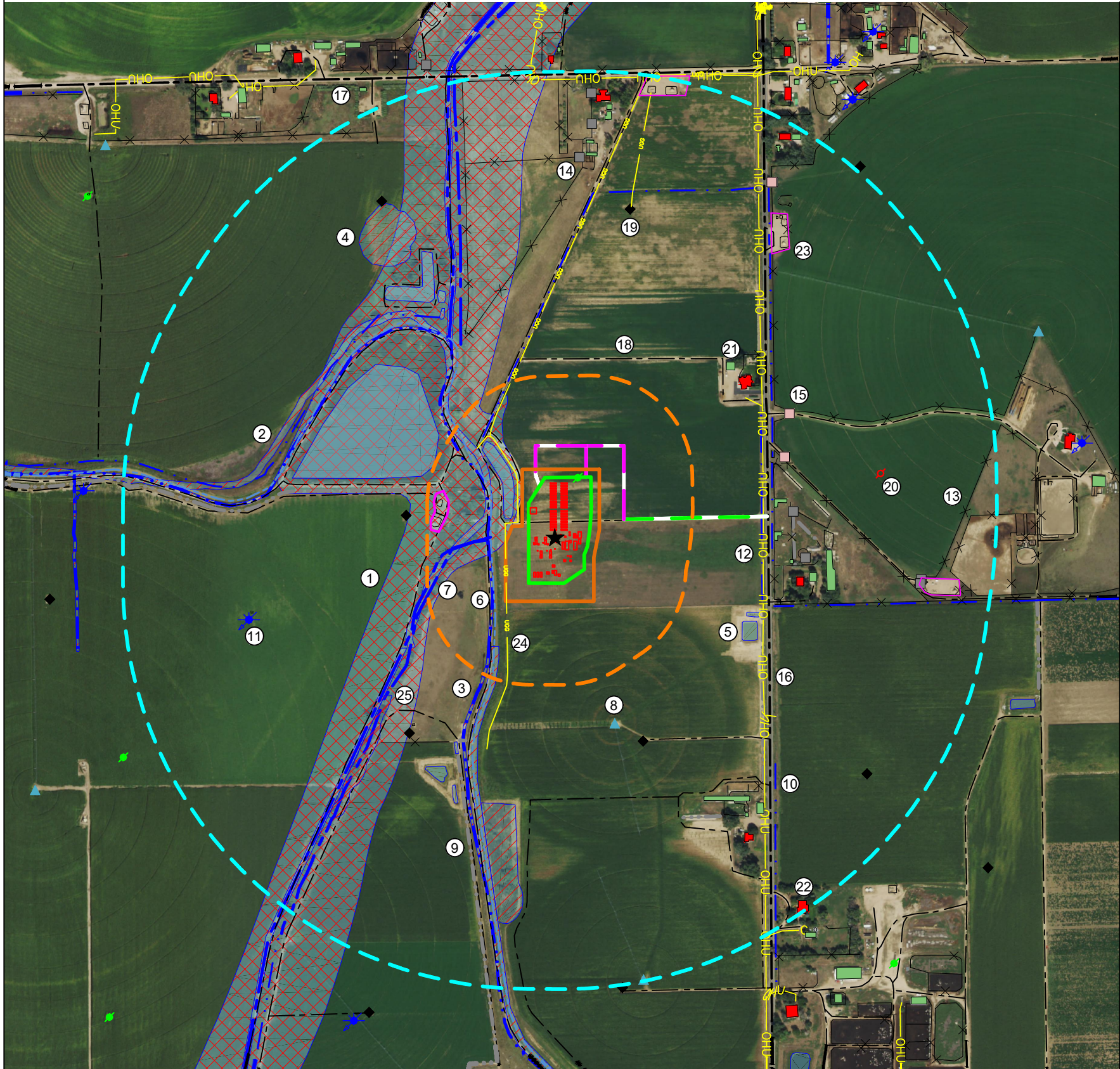
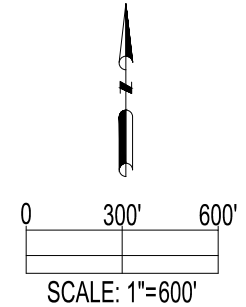


A07-08 FACILITY
LOCATION DRAWING



IMPROVEMENTS:
(AS MEASURED FROM THE PROPOSED WORKING PAD SURFACE)

1. FLOODPLAIN:	±46' W
2. SEASONAL INTERMITTENT STREAMBED WETLANDS:	±177' W, ±344' SW
3. PERENNIAL DITCH/CHANNEL WETLANDS:	±176' W, ±682' SW, ±940' NW, ±817' NW
4. FRESHWATER EMERGENT WETLANDS:	±1094' S, ±1267' NW
5. PONDS:	±75' W, ±501' W, ±930' NW, ±995' NW, ±1033' NW, ±821' SE, ±828' SE, ±858' S, ±993' S, ±1059' S
6. GREELEY NUMBER 2 CANAL:	±174' W
7. WILLOW CREEK:	±187' W, ±764' NW
8. PIVOT POINTS:	±735' S, ±1992' S
9. CONCRETE DITCHES:	±467' W, ±995' E, ±895' E, ±1296' SE, ±835' SW
10. DITCHES:	±360' NW, ±945' NW, ±842' E, ±891' E, ±953' E, ±1344' SE
11. WATER WELL:	±1391' W
12. OVERHEAD UTILITIES:	±847' E, ±1962' N
13. FENCES:	±423' W, ±603' W, ±801' NW, ±1578' NW, ±1901' NW, ±1515' N, ±1596' N, ±1664' N, ±1922' N, ±1987' NE, ±1634' NE, ±1469' NE, ±881' NE, ±972' NE, ±895' E, ±922' E, ±902' E, ±987' E, ±1649' E, ±1788' E, ±866' SE, ±1265' SE, ±874' SW, ±890' SW
14. GATES:	±1580' N, ±1741' N, ±1893' N, ±1708' NE, ±996' E, ±1072' E, ±1650' E, ±1653' E
15. CATTLEGUARDS:	±1705' NE, ±960' E, ±1028' NE
16. PUBLIC ROAD (WELD COUNTY ROAD 51):	±859' E
17. PUBLIC ROAD (WELD COUNTY ROAD 72):	±1975' N
18. PRIVATE ROADS:	±0', ±583' N, ±1407' NE, ±922' NE, ±887' E, ±924' E, ±1587' E, ±880' SE, ±1188' SE, ±1843' SE, ±1063' S, ±803' SW, ±195' W, ±412' W, ±399' W, ±441' W, ±376' NW, ±348' NW, ±1002' NW, ±1842' NW
19. EXISTING OIL & GAS WELLS:	±1582' NW, ±1335' N, ±1719' SE, ±870' SE, ±944' SW, ±604' W
20. EXISTING ABANDONED OIL & GAS WELLS:	±0' N, ±1428' E
21. BUILDINGS:	±1763' N, ±1814' N, ±1583' N, ±1645' N, ±1850' NE, ±1936' NE, ±851' NE, ±903' E, ±907' E, ±1170' E, ±1259' SE, ±1438' SE, ±1431' SE
22. RESIDENTIAL BUILDING UNITS:	±1850' N, ±1905' NE, ±860' NE, ±1043' E, ±1519' SE, ±1944' SE
23. EXISTING FACILITIES:	±1646' E, ±1416' NE, ±1895' N, ±394' W
24. UNDERGROUND GAS LINES:	±52' W, ±1895' N, ±1989' N, ±1930' N, ±338' NW
25. FORESTED/SHRUB WETLAND:	±873' SW



DATA SOURCE:
AERIAL IMAGERY: NAIP 2019
WATER WELLS: COLORADO DWR
NHD: USGS

PUBLICLY AVAILABLE DATA SOURCES HAVE NOT
BEEN INDEPENDENTLY VERIFIED BY ASCENT.

OIL & GAS SURFACE ACREAGE:

6.2 ACRES OIL & GAS LOCATION
3.3 ACRES WORKING PAD SURFACE
6.2 ACRES INTERIM RECLAIM

REFERENCE LOCATION
★
LAT: 40.50149° N
LONG: 104.58750° W
ELEVATION: 4731'
2271' FNL & 1060' FEL
PDOP: 1.3
GPS OPERATOR: RYAN DESMOND

DISCLAIMER:
THIS PLOT DOES NOT REPRESENT A MONUMENTED LAND SURVEY AND SHOULD NOT BE RELIED UPON TO DETERMINE BOUNDARY LINES,
PROPERTY OWNERSHIP OR OTHER PROPERTY INTERESTS. PARCEL LINES, IF DEPICTED HAVE NOT BEEN FIELD VERIFIED AND MAY BE BASED
UPON PUBLICLY AVAILABLE DATA THAT ALSO HAS NOT BEEN INDEPENDENTLY VERIFIED.

CURRENT SURFACE USE: IRRIGATED CROP LAND
FUTURE SURFACE USE: IRRIGATED CROP LAND



FIELD DATE: 06-03-19	DRAWING DATE: 11-23-21	SITE NAME: A07-08 FACILITY
SURFACE LOCATION: SE 1/4 NE 1/4 SEC. 7, T6N, R64W, 6TH P.M. WELD COUNTY, COLORADO		
DRAWN BY: IJM	CHECKED BY: CSG	

LEGEND: ▲ = PIVOT POINT ★ = WATER WELL ◆ = EXISTING WELL ● = PLUGGED & ABANDONED WELL ⊙ = DRY & ABANDONED WELL	--- = DITCH --- = CONCRETE DITCH --- = CANAL --- = STREAM --- = UNDERGROUND GAS LINE	--- = PRIVATE ROAD --- = PUBLIC ROAD --- = FENCE --- = PROPOSED ACCESS ROAD --- = EXISTING ACCESS ROAD (TO BE IMPROVED)	--- = OVERHEAD UTILITY --- = 500' RADIUS FROM WPS --- = 2000' RADIUS FROM WPS --- = OIL & GAS LOCATION --- = PROPOSED FACILITY	--- = GATE --- = POND --- = WETLAND --- = FLOODPLAIN --- = RESIDENTIAL BUILDING UNIT	--- = BUILDING --- = CATTLE GAURD --- = EXISTING FACILITY --- = WORKING PAD SURFACE
--	--	---	--	--	--

