

INTERIM RECLAMATION PLAN

Date: January 10, 2022

Location: WR OGDP 1 / Wells Ranch CDP / A07-08 Facility

Legal Description: SENE Section 7, Township 6 North, Range 64 West, 6th P.M., Weld County Colorado



[Table of Contents](#)

| | |
|--|---|
| Article I. Introduction | 2 |
| Location Information | 2 |
| Article II. Site Specific Details | 2 |
| Vegetation..... | 2 |
| Soils | 2 |
| Security | 3 |
| Pipeline/Flowline/Utility | 3 |
| Article III. Mitigation Measures and Best Management Practices | 3 |
| 1002.a. Fencing | 3 |
| 1002.f. Stormwater Management | 3 |
| 1003.a. General..... | 3 |
| 1003.b. Areas no Longer in Use | 4 |
| 1003.c. Compaction Alleviation. | 4 |
| 1003.d. Drilling pit closure | 4 |
| 1003.e. Restoration and revegetation | 4 |
| 1003.f. Weed control | 4 |
| Interim Reclamation Completion Notice | 4 |
| Article IV. Exhibits/References/Appendices | 6 |

Article I. Introduction

Location Information

This document provides site-specific information for the A07-08 Facility within the WR OGD 1 of the Wells Ranch CDP. The information in this document relates specifically to the time during the construction of this location and the construction, drilling, completion, and production of the thirty-six (36) proposed horizontal wells producing to this location.

The proposed location is irrigated crop southwest of the intersection of WCR 51 and WCR 72. The Facility will be in the SENE Section 7, Township 6 North, Range 64 West, zoned agricultural within the Weld County Near-Urban Planning Area. A 1041 WOGLA was filed for the CDP as 1041WOGLA19-0042 on 12/10/2019 and recorded at reception #4556398 on 1/8/2020. Site-specific supplemental information will be filed with Weld County prior to commencement of operations.

The proposed A07-08 Facility oil and gas location disturbance will be 6.2 acres, which will not be reduced after interim reclamation. The proposed working pad surface will be 3.3 acres. A07-08 Facility is on Parcel 080107000002 owned by Cheryl and Gary Bishop. The location is currently used for farming.

The proposed A07-08 Facility will accept production from wells on the A07-01 Pad, A07-04 Pad, A07-23 Pad, and A18-09 Pad. The proposed A07-08 Facility equipment will include separators, vapor recovery unit(s) (VRUs), gas compressor(s), VOC combustor(s), surge vessel(s), pigging station(s), gas/diesel motor(s), injection pump(s), maintenance tank(s), scrubber(s), skid drain vault(s), instrument air skid(s), and proposed electrical and/or solar equipment.

| Phase | Duration (days) | Estimated Start Date |
|---------------------|-----------------|--|
| Construction | 60 days | 3rd Quarter, 2024 |
| Drilling | 40 days | 1st Quarter, 2025 |
| Completion | 40 days | 3rd Quarter, 2025 |
| Flowback | N/A | Flowing back directly to permanent facility. |
| Production | 25 years | 4th Quarter, 2025 |
| Interim Reclamation | 60 days | 3rd Quarter, 2026 |

Article II. Site Specific Details

Vegetation

Location is in irrigated cropland.

Soils

Total area of soil disturbance in acres including accesses and flowline corridors: approximately 11.3 acres.

Soil details are included in attached soil report.

Facility Soil type(s): 4 - Aquolls and Aquepts, flooded; 38 - Nelson fine sandy loam, 3% - 9% slopes; 52 - Otero sandy loam, 3 to 5 percent slopes

Access Soil type(s)*: 38 - Nelson fine sandy loam, 3 to 9 percent slopes; 51 - Otero sandy loam, 1 to 3 percent slopes; 52 - Otero sandy loam, 3 to 5 percent slopes

Flowline Corridor Soil type(s)*: 4 - Aquolls and Aquepts, flooded; 37 - Nelson fine sandy loam, 0 to 3 percent slopes; 38 - Nelson fine sandy loam, 3 to 9 percent slopes; 52 - Otero sandy loam, 3 to 5 percent slopes

**NRCS data is not accurate at scale for access roads and flowline corridor.*

Security

A meeting with the surface owner will occur after completions but before interim reclamation to determine a fencing plan if needed. The location will be adequately secured per 603.h to restrict access by unauthorized persons in accordance with the surface owner's requests.

Pipeline/Flowline/Utility

No portions of the access road will be reclaimed. Buried intra-facility flowline corridors will be totally reclaimed. 3rd party utility and gathering pipelines are not being permitted as part of this OGDP.

Article III. Mitigation Measures and Best Management Practices

1002.a. Fencing

Noble will use CPW-recommended fence designs when consistent with the Surface Owner's approval and any relevant Local Government requirements.

1002.f. Stormwater Management

Temporary seeding, hydro mulching, and/or surface roughening will be placed along the south, east, and north sides of the pad during initial pad construction and maintained until interim reclamation, where additional seeding, hydro mulching, and/or surface roughening will also occur at the areas being reclaimed.

A detention pond along the south edge of the pad will be constructed during pad construction and maintained throughout the life of the location.

1003.a. General

All surface production facilities shall be maintained in accordance with Rule 603.

All E&P waste shall be handled according to the 900 Series rules.

All guy line anchors shall be brightly marked pursuant to Rule 603.j.

1003.b. Areas no Longer in Use

Not applicable.

1003.c. Compaction Alleviation.

Not applicable.

1003.d. Drilling pit closure

Not applicable.

1003.e. Restoration and revegetation

All segregated soil horizons removed from non-crop lands shall be replaced to their original relative positions and contour as near as practicable to achieve erosion control and long-term stability and shall be tilled adequately in order to establish a proper seedbed. The disturbed area then shall be returned to farmland.

Noble Energy will be responsible for segregating the topsoil, backfilling, re-compacting any backfill, reseeding, and re-contouring the surface of any disturbed area so as not to interfere with Owner's operations and will reclaim such area to be returned to preexisting conditions as best as possible with control of all weeds.

1003.f. Weed control

During production, and reclamation operations, all disturbed areas shall be kept as free of all undesirable plant species designated to be noxious weeds as practicable. Noble Energy or contractor will conduct daily visual inspections for weeds.

Reclamation Monitoring, Inspection, Maintenance, and Reporting

Regular monitoring of reclaimed areas will be conducted by a qualified consultant to assess the success of reclamation activities and identify any corrective actions required to achieve success. Any corrective actions recommended by the consultant will be communicated with the appropriate Noble Energy personnel who will implement the corrective actions and track the status of completion of such actions. Corrective actions may include, but not be limited to, control of weeds and other undesired vegetation, recommendations for soil amendments or additional seeding, and erosion control. The regular monitoring will include qualitative assessments of revegetation success until such time the consultant believes that revegetation has met the appropriate State and/or Federal standards. At that time, the consultant will utilize an appropriate quantitative method for determining revegetation success.

Interim Reclamation Completion Notice

Noble Energy will submit a Form 4 Sundry Notice describe reclamation procedures, associated mitigation measures, changes to final land use, and the total cover of live perennial vegetation to evaluate the success of interim reclamation.

Site-Specific BMPs

The following is a list of site-specific BMPs related to Noble Energy's interim reclamation approach at the A07-08 Facility location, for areas that will be reclaimed and not used for continuing oil and gas operations:

- **Compaction alleviation** – compacted soils and areas of the location impacted by construction will be ripped to a minimum depth of 18 inches prior to topsoil replacement. Decompaction will be performed by a parabolic Ag style ripper capable of fracturing the soil ensuring soil layers are not mixed. Proper decompaction will allow for greater water infiltration and promote vegetation growth.
- **Culvert** – culverts are a means of subsurface storm water conveyance where surface transport is not feasible. Culverts are most often used to convey water under a roadway without impeding use of the road.
- **Culvert protection** - culvert protection may be required at the inlet (upstream side) of the culvert and/or the outlet (downstream side) of the culvert. Protection helps to reduce erosion from culverts with concentrated, high velocity flows.
- **Erosion control** – seed/mulch application functions as erosion control during initial reclamation efforts until adequate vegetation has been established, at which point the reclamation will be deemed final stabilized. The interim working pad will be stabilized against potential erosion for the long-term with surface armoring.
- **Fencing** – Noble Energy will fence reclaimed areas until interim reclamation has been achieved in order to ensure vegetation growth is not overgrazed. Fence types are to be determined by Noble Energy and the landowner to adequately prevent livestock from entering reclaimed areas. Fencing to be installed after seed/mulch application.
- **Grading** – Grading involves reshaping the ground surface to planned grades. Grading provides more suitable topography for well pads and pipelines and helps to control runoff, soil erosion, and sediment during and after construction in these areas.
- **Mulching** – mulching is a temporary erosion control used to stabilize exposed soils while waiting for vegetation to establish. Mulch protects soils from rain impacts and wind erosion, increases infiltration, and helps regulate soil temperatures. Typically, agricultural straw or hay is mechanically applied and crimped in or wood splinters/fibers are surface applied by hand or machinery. Tackifiers may be sprayed over the applied mulch to enhance stabilization.
- **Placement of soil** – any subsoil used during interim reclamation is applied first, followed by top soil, in order to ensure that topsoil is not contaminated or adulterated and to ensure optimum germination efforts.
- **Packing of soil layers** – if multiple soil layers are applied during interim reclamation, each soil layer is packed separately and sequentially.
- **Recontouring** – documenting the existing topography and natural drainages and the site prior to disturbance, and reestablishing the topography and contours on the reclamation to pre-disturbance conditions.
- **Routine inspections** – Noble Energy, and/or third-party contractors, conduct a number of routine and regularly scheduled inspections during which the reclamation and general site conditions are inspected and monitored.
- **Seedbed preparation** – after decompaction, recontouring, and topsoil application, the top 3- 4 inches of soil will be prepared for seed application using a high-speed disk and/or a mulcher as needed. Seedbed will be void of earthen clods and firm enough to keep seed from being applied too deeply. Soil samples will be collected and analyzed prior to seed application to identify any

amendments needed. Compost and fertilizer will be applied based on current site conditions and on an as needed basis.

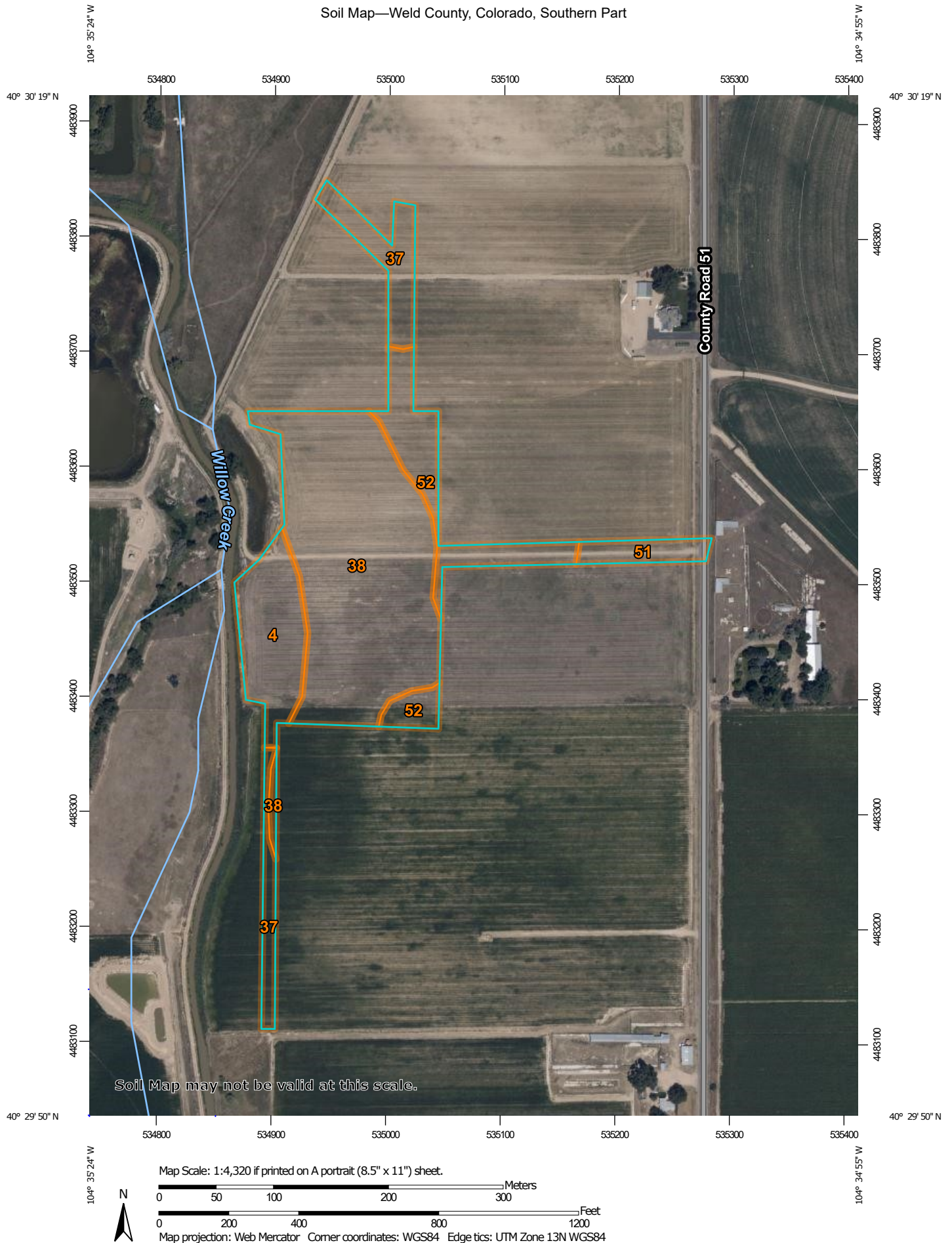
- Seeding – seeding, to establish perennial vegetative cover following construction, is the best long term stabilization control for areas not stabilized with other permanent controls (pavement, concrete, road base, etc.). Establishing perennial vegetation stabilizes the soil, reduces wind and water erosion, minimizes sheet flow, increases infiltration, and reduces overall runoff volumes. Seeding can be used to establish temporary stabilization when dirt moving activities have ceased and will not resume for an extended period of time, or as a final stabilization technique as part of the reclamation plan for a site.
- Seed mix – the seed mix will be selected in coordination with the landowner and/or the NRCS.
- Stockpile management – stockpile management is the protection of stockpiled erodible materials through structural and nonstructural practices.
- Surface armor – surface armor is a combination of various materials (e.g., clay, concrete, dirt, rock, etc.) used to stabilize a surface on location where erosion could occur. The armor reduces erosion caused by runoff and/or raindrop impact and provides a stable working surface for various construction related activities. Surface armor is often utilized throughout the life of a location and can be incorporated on access roads, tank battery locations, and well head locations.
- Timing of reclamation – seeding will occur during interim reclamation – after compaction alleviation, topsoil application, recontouring, and seedbed preparation, and will be conducted during a spring or fall planting window to achieve maximum germination rates.
- Topsoil salvage – the salvage and proper handling of topsoil is one of the keys to reclamation success. Topsoil is vital for the revegetation of disturbed areas following final grading.
- Training – employee training on spill prevention, stormwater, and associated practices and procedures is essential to ensuring that everyone has the knowledge needed to follow appropriate steps and be able to minimize potential impacts resulting from stormwater related incidents.
- Weed control – invasive plants will be managed by performing a site assessment during the spring and upon completion of the first growing season after interim reclamation. This assessment will identify and inventory any/all invasive plants on the location. The assessment will include GPS coordinates and maps detailing the location of the invasive plants. Management will be performed by either mowing or spraying and in some rare occasions both methods may be necessary. Routine inspections throughout the life of the pad will also aid in identifying when weed mitigation is needed.

Article IV. Exhibits/References/Appendices

NRCS Soil Details

Relevant Layout Drawings

Soil Map—Weld County, Colorado, Southern Part




MAP LEGEND

Area of Interest (AOI)

 Area of Interest (AOI)

Soils

 Soil Map Unit Polygons

 Soil Map Unit Lines

 Soil Map Unit Points

Special Point Features



Blowout



Borrow Pit



Clay Spot



Closed Depression



Gravel Pit



Gravelly Spot



Landfill



Lava Flow



Marsh or swamp



Mine or Quarry



Miscellaneous Water



Perennial Water



Rock Outcrop



Saline Spot



Sandy Spot



Severely Eroded Spot



Sinkhole



Slide or Slip



Sodic Spot



Spoil Area



Stony Spot



Very Stony Spot



Wet Spot



Other



Special Line Features

Water Features



Streams and Canals

Transportation



Rails



Interstate Highways



US Routes



Major Roads



Local Roads

Background



Aerial Photography

MAP INFORMATION

The soil surveys that comprise your AOI were mapped at 1:24,000.

Warning: Soil Map may not be valid at this scale.

Enlargement of maps beyond the scale of mapping can cause misunderstanding of the detail of mapping and accuracy of soil line placement. The maps do not show the small areas of contrasting soils that could have been shown at a more detailed scale.

Please rely on the bar scale on each map sheet for map measurements.

Source of Map: Natural Resources Conservation Service

Web Soil Survey URL:

Coordinate System: Web Mercator (EPSG:3857)

Maps from the Web Soil Survey are based on the Web Mercator projection, which preserves direction and shape but distorts distance and area. A projection that preserves area, such as the Albers equal-area conic projection, should be used if more accurate calculations of distance or area are required.

This product is generated from the USDA-NRCS certified data as of the version date(s) listed below.

Soil Survey Area: Weld County, Colorado, Southern Part

Survey Area Data: Version 19, Jun 5, 2020

Soil map units are labeled (as space allows) for map scales 1:50,000 or larger.

Date(s) aerial images were photographed: Jul 19, 2018—Aug 10, 2018

The orthophoto or other base map on which the soil lines were compiled and digitized probably differs from the background imagery displayed on these maps. As a result, some minor shifting of map unit boundaries may be evident.

Map Unit Legend

| Map Unit Symbol | Map Unit Name | Acres in AOI | Percent of AOI |
|------------------------------------|---|--------------|----------------|
| 4 | Aquolls and Aquepts, flooded | 1.9 | 13.9% |
| 37 | Nelson fine sandy loam, 0 to 3 percent slopes | 1.6 | 11.7% |
| 38 | Nelson fine sandy loam, 3 to 9 percent slopes | 7.7 | 55.7% |
| 51 | Otero sandy loam, 1 to 3 percent slopes | 0.6 | 4.0% |
| 52 | Otero sandy loam, 3 to 5 percent slopes | 2.0 | 14.8% |
| Totals for Area of Interest | | 13.9 | 100.0% |

Weld County, Colorado, Southern Part

4—Aquolls and Aquepts, flooded

Map Unit Setting

National map unit symbol: 362l

Elevation: 3,600 to 4,700 feet

Mean annual precipitation: 12 to 16 inches

Mean annual air temperature: 50 to 55 degrees F

Frost-free period: 100 to 165 days

Farmland classification: Prime farmland if drained and either protected from flooding or not frequently flooded during the growing season

Map Unit Composition

Aquolls and similar soils: 55 percent

Aquepts, flooded, and similar soils: 25 percent

Minor components: 20 percent

Estimates are based on observations, descriptions, and transects of the mapunit.

Description of Aquolls

Setting

Landform: Drainageways, plains, depressions

Down-slope shape: Linear

Across-slope shape: Linear

Parent material: Recent alluvium

Typical profile

H1 - 0 to 8 inches: variable

H2 - 8 to 60 inches: stratified sandy loam to clay

Properties and qualities

Slope: 0 to 3 percent

Depth to restrictive feature: More than 80 inches

Drainage class: Poorly drained

Runoff class: Very low

Capacity of the most limiting layer to transmit water

(Ksat): Moderately low to high (0.06 to 6.00 in/hr)

Depth to water table: About 6 to 36 inches

Frequency of flooding: FrequentNone

Frequency of ponding: None

Calcium carbonate, maximum content: 10 percent

Maximum salinity: Moderately saline to strongly saline (8.0 to 16.0 mmhos/cm)

Sodium adsorption ratio, maximum: 5.0

Available water capacity: Low (about 4.7 inches)

Interpretive groups

Land capability classification (irrigated): 6w

Land capability classification (nonirrigated): 6w

Hydrologic Soil Group: D
Ecological site: R067BY035CO - Salt Meadow
Hydric soil rating: Yes

Description of Aquepts, Flooded

Setting

Landform: Stream terraces
Down-slope shape: Linear
Across-slope shape: Linear
Parent material: Recent alluvium

Typical profile

H1 - 0 to 8 inches: variable
H2 - 8 to 60 inches: stratified sandy loam to clay

Properties and qualities

Slope: 0 to 3 percent
Depth to restrictive feature: More than 80 inches
Drainage class: Poorly drained
Runoff class: Very low
Capacity of the most limiting layer to transmit water (Ksat): Moderately low to high (0.06 to 6.00 in/hr)
Depth to water table: About 6 to 36 inches
Frequency of flooding: FrequentNone
Frequency of ponding: None
Calcium carbonate, maximum content: 10 percent
Maximum salinity: Moderately saline to strongly saline (8.0 to 16.0 mmhos/cm)
Sodium adsorption ratio, maximum: 5.0
Available water capacity: Low (about 4.7 inches)

Interpretive groups

Land capability classification (irrigated): 6w
Land capability classification (nonirrigated): 6w
Hydrologic Soil Group: D
Ecological site: R067BY038CO - Wet Meadow
Hydric soil rating: Yes

Minor Components

Haverson

Percent of map unit: 10 percent
Hydric soil rating: No

Thedalund

Percent of map unit: 10 percent
Hydric soil rating: No

Data Source Information

Soil Survey Area: Weld County, Colorado, Southern Part
Survey Area Data: Version 19, Jun 5, 2020

Weld County, Colorado, Southern Part

37—Nelson fine sandy loam, 0 to 3 percent slopes

Map Unit Setting

National map unit symbol: 362h

Elevation: 4,800 to 5,050 feet

Mean annual precipitation: 13 to 15 inches

Mean annual air temperature: 48 to 57 degrees F

Frost-free period: 145 to 190 days

Farmland classification: Farmland of statewide importance

Map Unit Composition

Nelson and similar soils: 85 percent

Minor components: 15 percent

Estimates are based on observations, descriptions, and transects of the mapunit.

Description of Nelson

Setting

Landform: Plains

Down-slope shape: Linear

Across-slope shape: Linear

Parent material: Residuum weathered from sandstone

Typical profile

H1 - 0 to 9 inches: fine sandy loam

H2 - 9 to 30 inches: fine sandy loam

H3 - 30 to 34 inches: weathered bedrock

Properties and qualities

Slope: 0 to 3 percent

Depth to restrictive feature: 20 to 40 inches to paralithic bedrock

Drainage class: Well drained

Runoff class: Low

Capacity of the most limiting layer to transmit water

(Ksat): Moderately low to high (0.06 to 2.00 in/hr)

Depth to water table: More than 80 inches

Frequency of flooding: None

Frequency of ponding: None

Calcium carbonate, maximum content: 10 percent

Maximum salinity: Nonsaline to very slightly saline (0.0 to 2.0 mmhos/cm)

Available water capacity: Low (about 3.7 inches)

Interpretive groups

Land capability classification (irrigated): 4e

Land capability classification (nonirrigated): 4e

Hydrologic Soil Group: B

Ecological site: R067BY024CO - Sandy Plains

Hydric soil rating: No

Minor Components

Thedalund

Percent of map unit: 10 percent

Hydric soil rating: No

Olney

Percent of map unit: 5 percent

Hydric soil rating: No

Data Source Information

Soil Survey Area: Weld County, Colorado, Southern Part

Survey Area Data: Version 19, Jun 5, 2020

Weld County, Colorado, Southern Part

38—Nelson fine sandy loam, 3 to 9 percent slopes

Map Unit Setting

National map unit symbol: 362j

Elevation: 4,800 to 5,050 feet

Mean annual precipitation: 13 to 15 inches

Mean annual air temperature: 48 to 57 degrees F

Frost-free period: 145 to 190 days

Farmland classification: Farmland of local importance

Map Unit Composition

Nelson and similar soils: 85 percent

Minor components: 15 percent

Estimates are based on observations, descriptions, and transects of the mapunit.

Description of Nelson

Setting

Landform: Plains

Down-slope shape: Linear

Across-slope shape: Linear

Parent material: Residuum weathered from sandstone

Typical profile

H1 - 0 to 9 inches: fine sandy loam

H2 - 9 to 30 inches: fine sandy loam

H3 - 30 to 34 inches: weathered bedrock

Properties and qualities

Slope: 3 to 9 percent

Depth to restrictive feature: 20 to 40 inches to paralithic bedrock

Drainage class: Well drained

Runoff class: Medium

Capacity of the most limiting layer to transmit water

(Ksat): Moderately low to high (0.06 to 2.00 in/hr)

Depth to water table: More than 80 inches

Frequency of flooding: None

Frequency of ponding: None

Calcium carbonate, maximum content: 10 percent

Maximum salinity: Nonsaline to very slightly saline (0.0 to 2.0 mmhos/cm)

Available water supply, 0 to 60 inches: Low (about 3.7 inches)

Interpretive groups

Land capability classification (irrigated): 4e

Land capability classification (nonirrigated): 6e

Hydrologic Soil Group: B

Ecological site: R067BY024CO - Sandy Plains

Hydric soil rating: No

Minor Components

Thedalund

Percent of map unit: 10 percent

Hydric soil rating: No

Terry

Percent of map unit: 5 percent

Hydric soil rating: No

Data Source Information

Soil Survey Area: Weld County, Colorado, Southern Part

Survey Area Data: Version 19, Jun 5, 2020

Weld County, Colorado, Southern Part

51—Otero sandy loam, 1 to 3 percent slopes

Map Unit Setting

National map unit symbol: 3630

Elevation: 4,700 to 5,250 feet

Mean annual precipitation: 12 to 15 inches

Mean annual air temperature: 48 to 52 degrees F

Frost-free period: 130 to 180 days

Farmland classification: Prime farmland if irrigated and the product of
I (soil erodibility) x C (climate factor) does not exceed 60

Map Unit Composition

Otero and similar soils: 85 percent

Minor components: 15 percent

*Estimates are based on observations, descriptions, and transects of
the mapunit.*

Description of Otero

Setting

Landform: Plains

Down-slope shape: Linear

Across-slope shape: Linear

Parent material: Eolian deposits and/or mixed outwash

Typical profile

H1 - 0 to 12 inches: sandy loam

H2 - 12 to 60 inches: fine sandy loam

Properties and qualities

Slope: 1 to 3 percent

Depth to restrictive feature: More than 80 inches

Drainage class: Well drained

Runoff class: Very low

Capacity of the most limiting layer to transmit water

(Ksat): Moderately high to high (0.57 to 5.95 in/hr)

Depth to water table: More than 80 inches

Frequency of flooding: None

Frequency of ponding: None

Calcium carbonate, maximum content: 10 percent

Maximum salinity: Nonsaline to slightly saline (0.0 to 4.0
mmhos/cm)

Available water capacity: Moderate (about 7.7 inches)

Interpretive groups

Land capability classification (irrigated): 3e

Land capability classification (nonirrigated): 4e

Hydrologic Soil Group: A

Ecological site: R067BY024CO - Sandy Plains

Hydric soil rating: No

Minor Components

Kim

Percent of map unit: 10 percent

Hydric soil rating: No

Vona

Percent of map unit: 5 percent

Hydric soil rating: No

Data Source Information

Soil Survey Area: Weld County, Colorado, Southern Part

Survey Area Data: Version 19, Jun 5, 2020

Weld County, Colorado, Southern Part

52—Otero sandy loam, 3 to 5 percent slopes

Map Unit Setting

National map unit symbol: 3631

Elevation: 4,700 to 5,250 feet

Mean annual precipitation: 12 to 15 inches

Mean annual air temperature: 48 to 52 degrees F

Frost-free period: 130 to 180 days

Farmland classification: Farmland of statewide importance

Map Unit Composition

Otero and similar soils: 85 percent

Minor components: 15 percent

Estimates are based on observations, descriptions, and transects of the mapunit.

Description of Otero

Setting

Landform: Plains

Down-slope shape: Linear

Across-slope shape: Linear

Parent material: Eolian deposits and/or mixed outwash

Typical profile

H1 - 0 to 12 inches: sandy loam

H2 - 12 to 60 inches: fine sandy loam

Properties and qualities

Slope: 3 to 5 percent

Depth to restrictive feature: More than 80 inches

Drainage class: Well drained

Runoff class: Very low

Capacity of the most limiting layer to transmit water

(Ksat): Moderately high to high (0.57 to 5.95 in/hr)

Depth to water table: More than 80 inches

Frequency of flooding: None

Frequency of ponding: None

Calcium carbonate, maximum content: 10 percent

Maximum salinity: Nonsaline to slightly saline (0.0 to 4.0 mmhos/cm)

Available water capacity: Moderate (about 7.7 inches)

Interpretive groups

Land capability classification (irrigated): 3e

Land capability classification (nonirrigated): 4e

Hydrologic Soil Group: A

Ecological site: R067BY024CO - Sandy Plains

Hydric soil rating: No

Minor Components

Kim

Percent of map unit: 12 percent

Hydric soil rating: No

Vona

Percent of map unit: 3 percent

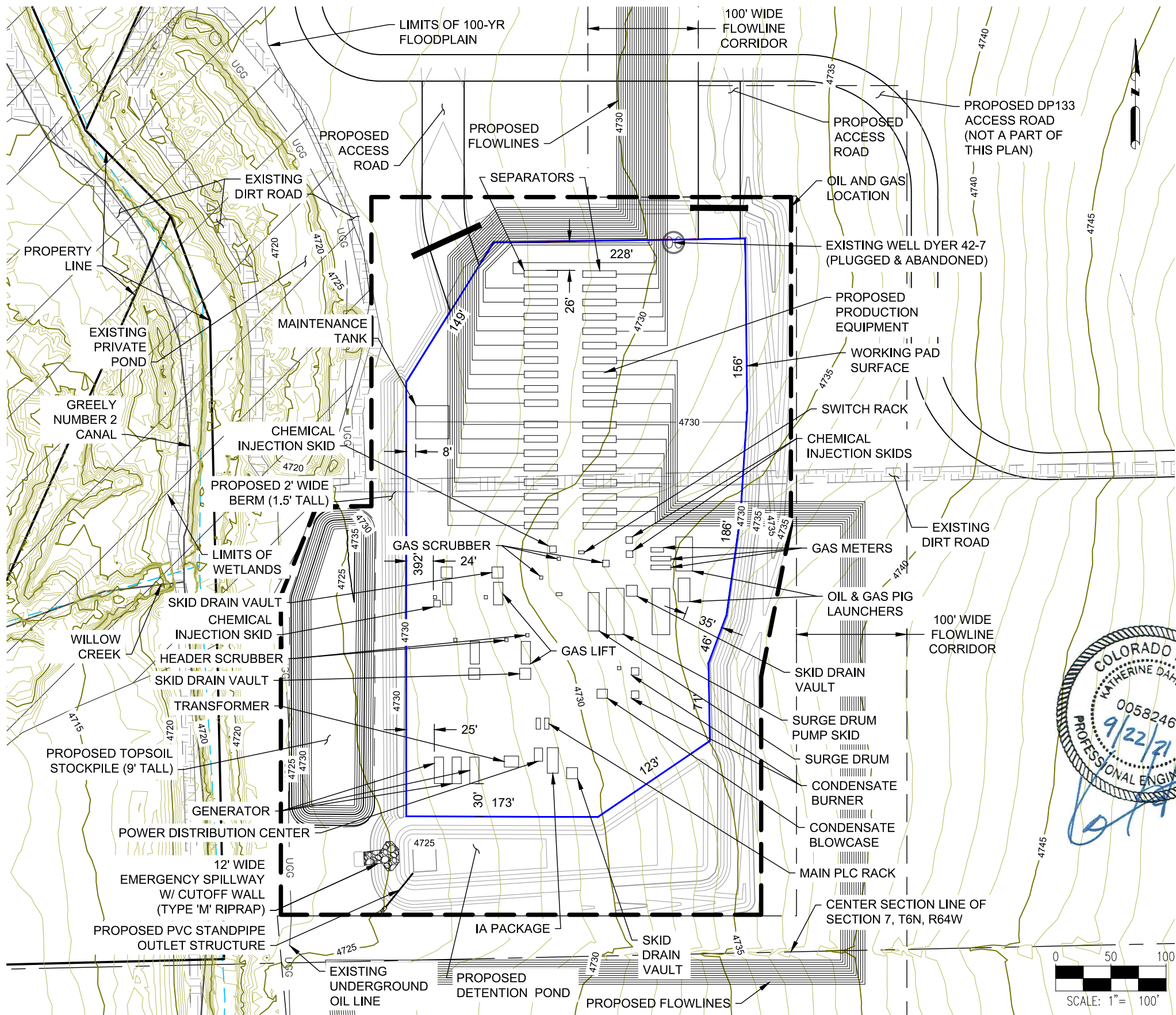
Hydric soil rating: No

Data Source Information

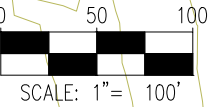
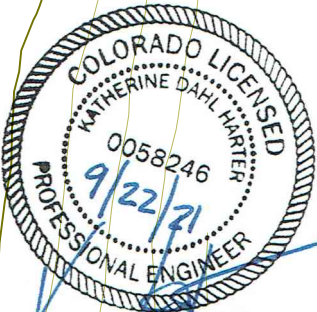
Soil Survey Area: Weld County, Colorado, Southern Part

Survey Area Data: Version 19, Jun 5, 2020



A07-08 FACILITY
GRADING PLAN



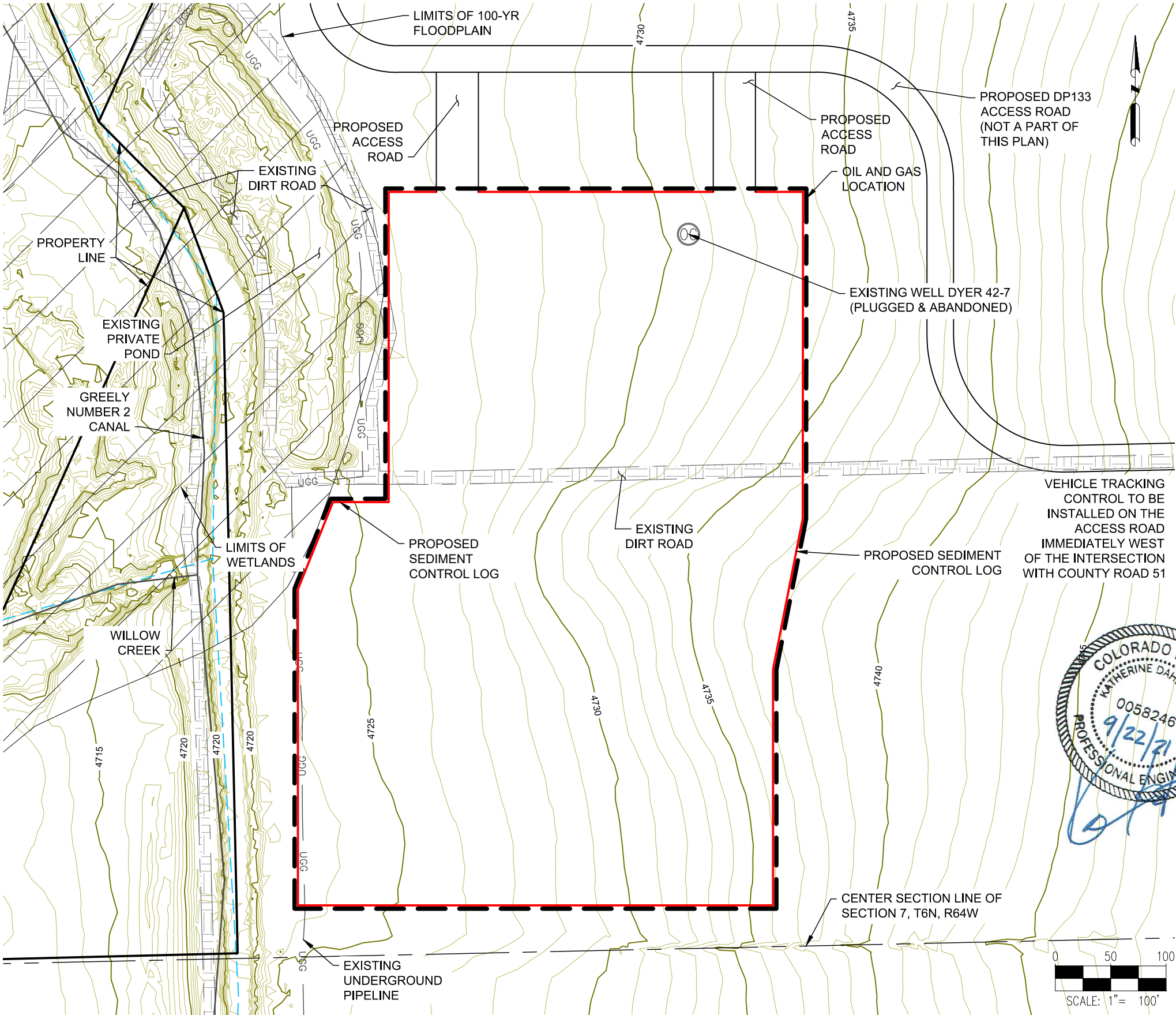
NOTES:
1. ASCENT GEOMATICS SOLUTIONS WAS NOT PROVIDED A TITLE REPORT FOR THIS SITE. ALL RECORDED DOCUMENTS REFERENCED ON THESE PLANS WERE DOWNLOADED FROM RESEARCH VIA THE WELD COUNTY CLERK AND RECORDER. ASCENT GEOMATICS SOLUTIONS MAKES NO GUARANTY OR WARRANTY, EITHER EXPRESSED OR IMPLIED, TO THE COMPLETENESS OF ENCUMBRANCES TO THE SUBJECT PROPERTY.



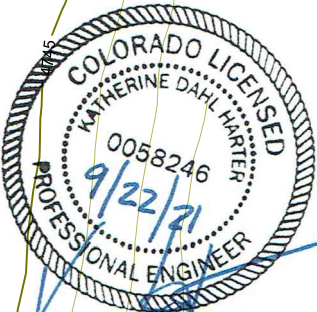
DISCLAIMER:
THIS PLOT DOES NOT REPRESENT A MONUMENTED LAND SURVEY AND SHOULD NOT BE RELIED UPON TO DETERMINE BOUNDARY LINES, PROPERTY OWNERSHIP OR OTHER PROPERTY INTERESTS. PARCEL LINES, IF DEPICTED HAVE NOT BEEN FIELD VERIFIED AND MAY BE BASED UPON PUBLICLY AVAILABLE DATA THAT ALSO HAS NOT BEEN INDEPENDENTLY VERIFIED.

| | | | |
|---|---------|---|------|
|  ASCENT GEOMATICS SOLUTIONS 8620 WOLFF COURT WESTMINSTER, CO 80031 (303) 928-7128 | | PREPARED FOR:  NOBLE ENERGY, INC. 1625 BROADWAY, SUITE 2200 DENVER, CO 80202 (303) 228-4000 | |
| SHEET NAME: PRODUCTION LAYOUT | | SURFACE LOCATION A07-08 FACILITY SE 1/4 NE 1/4 SECTION 7, T6N, R64W, 6TH P.M. WELD COUNTY, COLORADO | |
| REV. | DATE | REVISION DESCRIPTION | INT. |
| 0 | 9/20/21 | ISSUED FOR CONSTRUCTION | AS |
| 1 | | | |
| 2 | | | |
| 3 | | | |
| 4 | | | |
| 5 | | | |
| FIELD DATE: | | 04/15/2019 | |
| DRAWING DATE: | | 09/20/2021 | |
| DRAFTED BY: | | AS | |
| SHEET NO. | | 05 OF 12 | |

A07-08 FACILITY
GRADING PLAN



NOTES:
1. ASCENT GEOMATICS SOLUTIONS WAS NOT PROVIDED A TITLE REPORT FOR THIS SITE. ALL RECORDED DOCUMENTS REFERENCED ON THESE PLANS WERE DOWNLOADED FROM RESEARCH VIA THE WELD COUNTY CLERK AND RECORDER. ASCENT GEOMATICS SOLUTIONS MAKES NO GUARANTY OR WARRANTY, EITHER EXPRESSED OR IMPLIED, TO THE COMPLETENESS OF ENCUMBRANCES TO THE SUBJECT PROPERTY.



DISCLAIMER:
THIS PLOT DOES NOT REPRESENT A MONUMENTED LAND SURVEY AND SHOULD NOT BE RELIED UPON TO DETERMINE BOUNDARY LINES, PROPERTY OWNERSHIP OR OTHER PROPERTY INTERESTS. PARCEL LINES, IF DEPICTED HAVE NOT BEEN FIELD VERIFIED AND MAY BE BASED UPON PUBLICLY AVAILABLE DATA THAT ALSO HAS NOT BEEN INDEPENDENTLY VERIFIED.

ASCENT GEOMATICS SOLUTIONS
8620 WOLFF COURT
WESTMINSTER, CO 80031
(303) 928-7128

PREPARED FOR:

NOBLE ENERGY, INC.
1625 BROADWAY, SUITE 2200
DENVER, CO 80202
(303) 228-4000

SHEET NAME:

EROSION & SEDIMENT CONTROL PLAN - INITIAL

SURFACE LOCATION

A07-08 FACILITY
SE 1/4 NE 1/4 SECTION 7,
T6N, R64W, 6TH P.M.
WELD COUNTY, COLORADO

| REV. | DATE | REVISION DESCRIPTION | INT. |
|------|---------|-------------------------|------|
| 0 | 9/20/21 | ISSUED FOR CONSTRUCTION | AS |
| | | | |
| | | | |
| | | | |
| | | | |

FIELD DATE:

04/15/2019

DRAWING DATE:

09/20/2021

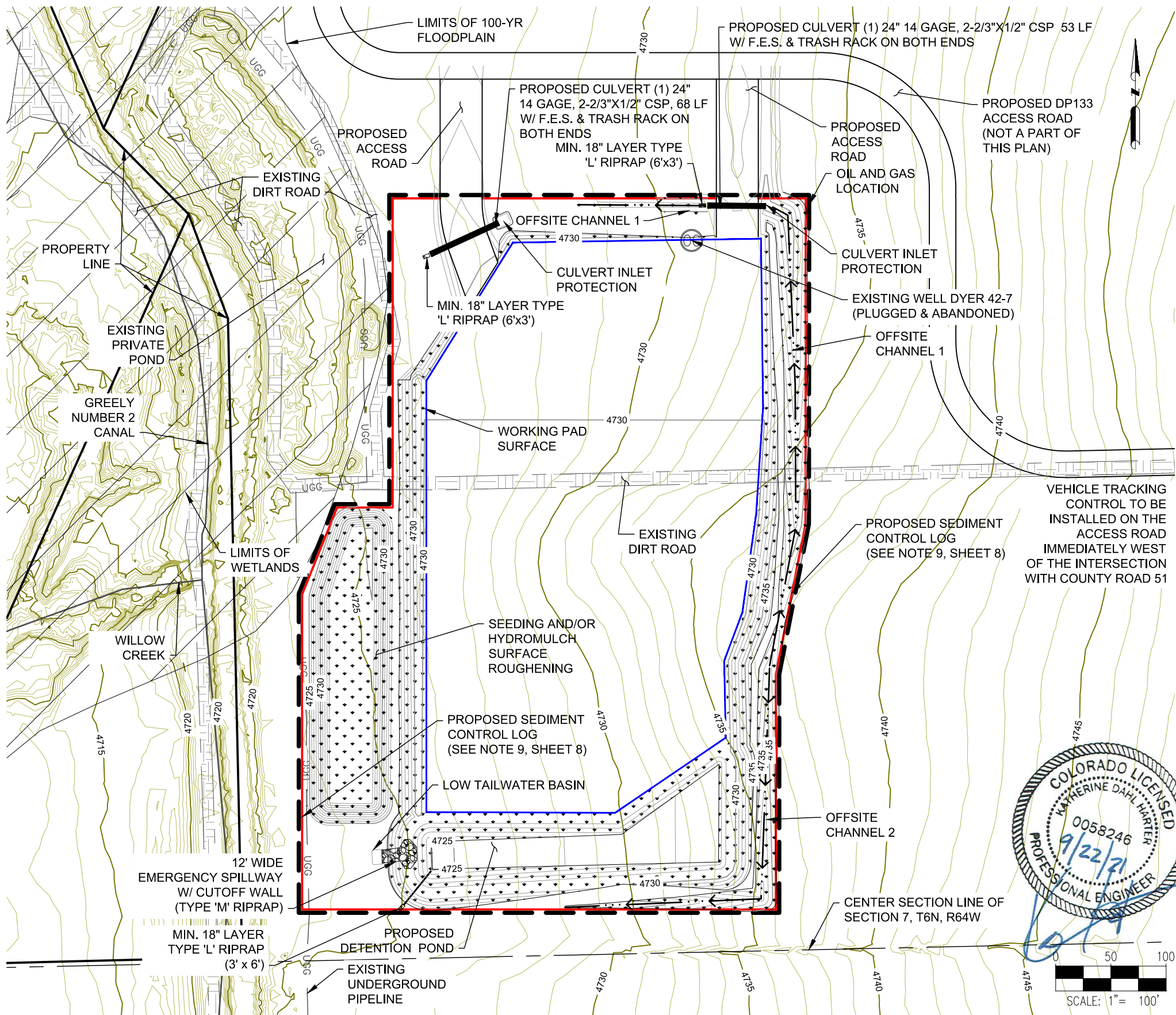
DRAFTED BY:

AS

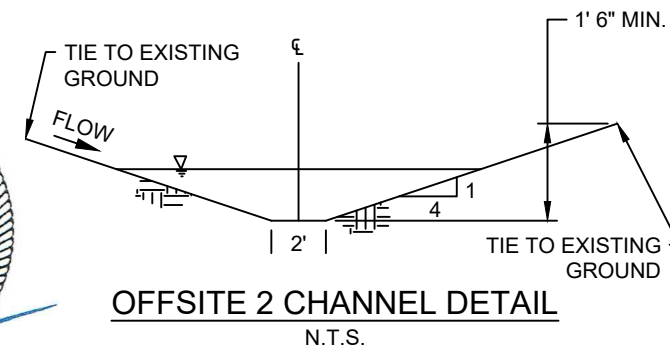
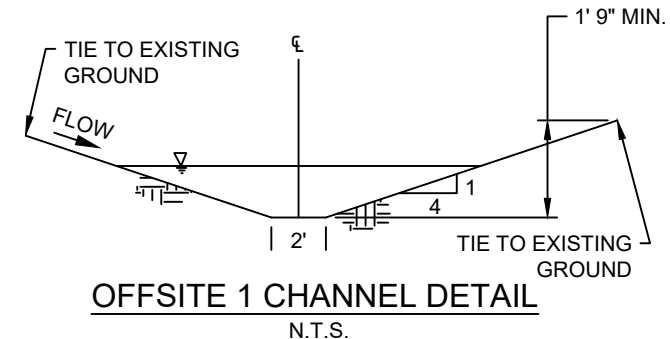
SHEET NO.

06 OF 12

A07-08 FACILITY
GRADING PLAN



- NOTES:
1. ASCENT GEOMATICS SOLUTIONS WAS NOT PROVIDED A TITLE REPORT FOR THIS SITE. ALL RECORDED DOCUMENTS REFERENCED ON THESE PLANS WERE DOWNLOADED FROM RESEARCH VIA THE WELD COUNTY CLERK AND RECORDER. ASCENT GEOMATICS SOLUTIONS MAKES NO GUARANTY OR WARRANTY, EITHER EXPRESSED OR IMPLIED, TO THE COMPLETENESS OF ENCUMBRANCES TO THE SUBJECT PROPERTY.
 2. CULVERTS TO BE INSTALLED IN ACCORDANCE WITH MANUFACTURER RECOMMENDATIONS.



DISCLAIMER:
THIS PLOT DOES NOT REPRESENT A MONUMENTED LAND SURVEY AND SHOULD NOT BE RELIED UPON TO DETERMINE BOUNDARY LINES, PROPERTY OWNERSHIP OR OTHER PROPERTY INTERESTS. PARCEL LINES, IF DEPICTED HAVE NOT BEEN FIELD VERIFIED AND MAY BE BASED UPON PUBLICLY AVAILABLE DATA THAT ALSO HAS NOT BEEN INDEPENDENTLY VERIFIED.

ASCENT GEOMATICS SOLUTIONS
8620 WOLFF COURT
WESTMINSTER, CO 80031
(303) 928-7128

PREPARED FOR:

NOBLE ENERGY, INC.
1625 BROADWAY, SUITE 2200
DENVER, CO 80202
(303) 228-4000

SHEET NAME:

EROSION & SEDIMENT CONTROL PLAN - FINAL

SURFACE LOCATION

A07-08 FACILITY
SE 1/4 NE 1/4 SECTION 7,
T6N, R64W, 6TH P.M.
WELD COUNTY, COLORADO

| REV. | DATE | REVISION DESCRIPTION | INT. |
|------|---------|-------------------------|------|
| 0 | 9/20/21 | ISSUED FOR CONSTRUCTION | AS |
| | | | |
| | | | |
| | | | |

FIELD DATE:

04/15/2019

DRAWING DATE:

09/20/2021

DRAFTED BY:

AS

SHEET NO.

07 OF 12