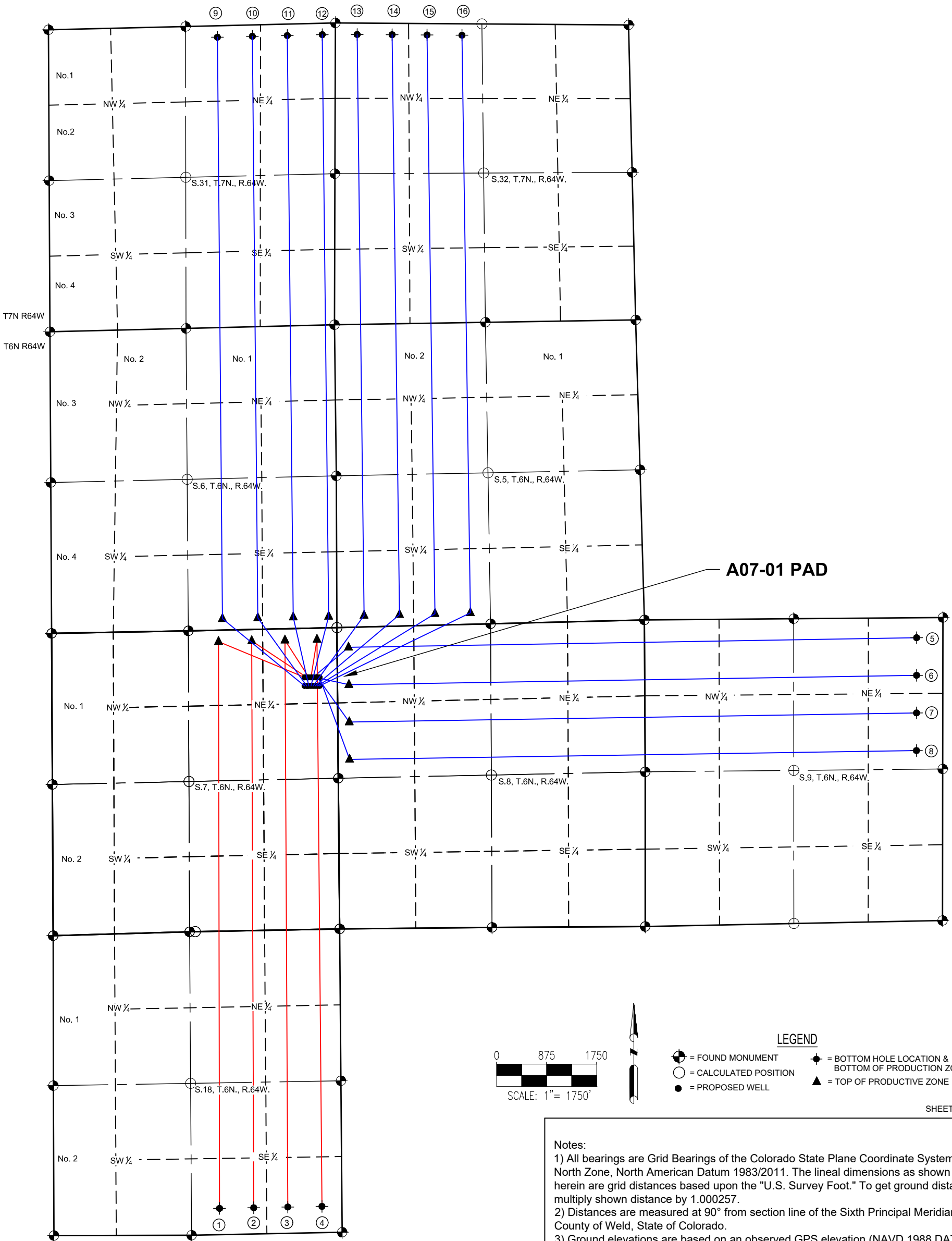


A07-01 PAD
MULTI-WELL PLAN
T6N R64W SECTION 7



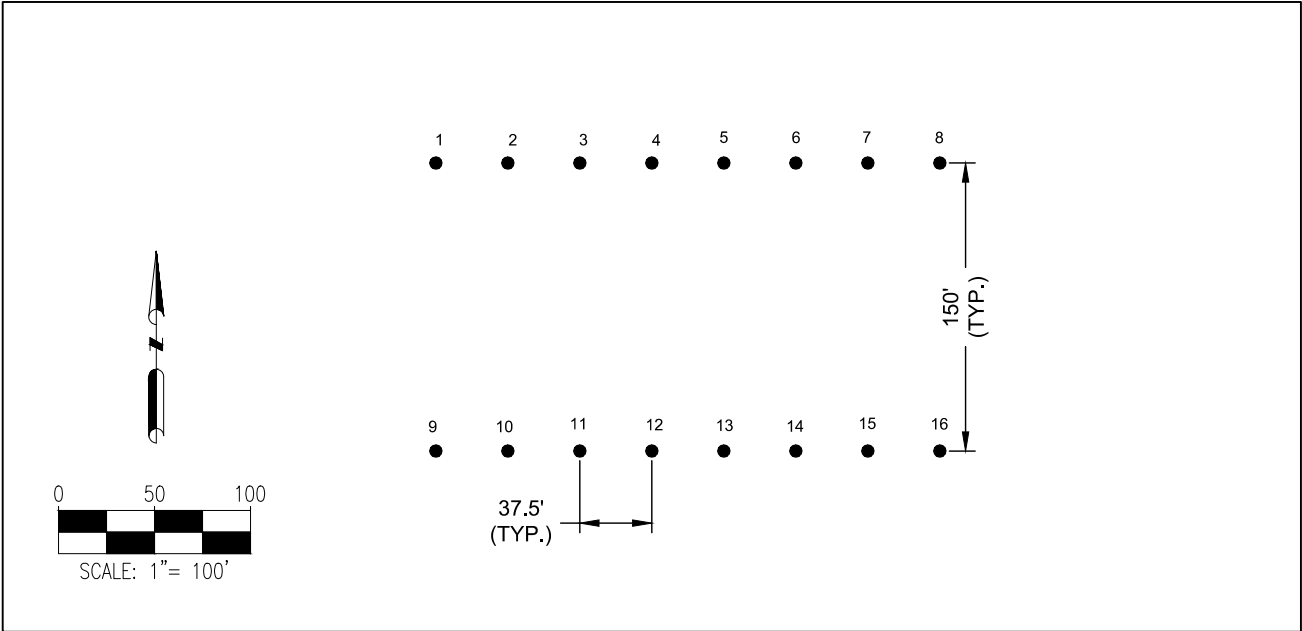
Notes:

- 1) All bearings are Grid Bearings of the Colorado State Plane Coordinate System, North Zone, North American Datum 1983/2011. The lineal dimensions as shown herein are grid distances based upon the "U.S. Survey Foot." To get ground distances multiply shown distance by 1.000257.
- 2) Distances are measured at 90° from section line of the Sixth Principal Meridian, County of Weld, State of Colorado.
- 3) Ground elevations are based on an observed GPS elevation (NAVD 1988 DATUM).
- 4) Surface use: "IRRIGATED CROP LAND"
- 5) Instrument Operator: RYAN DESMOND
- 6) This map does not represent a boundary survey.

DISCLAIMER:
THIS PLOT DOES NOT REPRESENT A MONUMENTED LAND SURVEY AND SHOULD NOT BE RELIED UPON TO DETERMINE BOUNDARY LINES, PROPERTY OWNERSHIP OR OTHER PROPERTY INTERESTS. PARCEL LINES, IF DEPICTED HAVE NOT BEEN FIELD VERIFIED AND MAY BE BASED UPON PUBLICLY AVAILABLE DATA THAT ALSO HAS NOT BEEN INDEPENDENTLY VERIFIED.

A07-01 PAD
DIRECTIONAL WELL PLAT
T6N R64W SECTION 7

PROPOSED WELLBORE DIRECTION DATA
A07-01 PAD



LEGEND

● = PROPOSED WELL

SURFACE HOLE LOCATION								TOP OF PRODUCTIVE ZONE		BOTTOM HOLE LOCATION & BOTTOM OF PRODUCTION ZONE	
SLOT	WELL NAME	LATITUDE	LONGITUDE	FOOTAGE		QTR-QTR	ELEV.	FOOTAGE		FOOTAGE	
1	BISHOP A18-742	40.50539°N	104.58574°W	857' FNL	574' FEL	NENE	4739'	200' FNL	2073' FEL	460' FSL	2142' FEL
2	BISHOP A18-733	40.50538°N	104.58561°W	858' FNL	537' FEL	NENE	4740'	200' FNL	1492' FEL	460' FSL	1544' FEL
3	BISHOP A18-724	40.50538°N	104.58547°W	859' FNL	499' FEL	NENE	4741'	200' FNL	911' FEL	460' FSL	947' FEL
4	BISHOP A18-715	40.50538°N	104.58534°W	860' FNL	462' FEL	NENE	4741'	200' FNL	350' FEL	460' FSL	350' FEL
5	BISHOP A09-685	40.50538°N	104.58520°W	861' FNL	424' FEL	NENE	4742'	350' FNL	200' FWL	350' FNL	460' FEL
6	BISHOP A09-675	40.50538°N	104.58507°W	861' FNL	387' FEL	NENE	4742'	1003' FNL	200' FWL	1008' FNL	460' FEL
7	BISHOP A09-665	40.50538°N	104.58493°W	862' FNL	349' FEL	NENE	4743'	1656' FNL	200' FWL	1665' FNL	460' FEL
8	BISHOP A09-655	40.50538°N	104.58480°W	863' FNL	312' FEL	NENE	4743'	2309' FNL	200' FWL	2323' FNL	460' FEL
9	BISHOP AB31-740	40.50497°N	104.58575°W	1007' FNL	576' FEL	NENE	4742'	200' FSL	2003' FEL	200' FNL	2063' FEL
10	BISHOP AB31-731	40.50497°N	104.58561°W	1008' FNL	538' FEL	NENE	4743'	200' FSL	1383' FEL	200' FNL	1452' FEL
11	BISHOP AB31-722	40.50497°N	104.58548°W	1009' FNL	501' FEL	NENE	4743'	200' FSL	763' FEL	200' FNL	841' FEL
12	BISHOP AB31-712	40.50497°N	104.58534°W	1010' FNL	463' FEL	NENE	4744'	200' FSL	143' FEL	200' FNL	230' FEL
13	BISHOP AB32-783	40.50497°N	104.58521°W	1011' FNL	426' FEL	NENE	4744'	200' FSL	476' FWL	200' FNL	381' FWL
14	BISHOP AB32-773	40.50497°N	104.58507°W	1011' FNL	388' FEL	NENE	4745'	200' FSL	1096' FWL	200' FNL	993' FWL
15	BISHOP AB32-764	40.50497°N	104.58494°W	1012' FNL	351' FEL	NENE	4745'	200' FSL	1716' FWL	200' FNL	1604' FWL
16	BISHOP AB32-755	40.50497°N	104.58480°W	1013' FNL	313' FEL	NENE	4746'	200' FSL	2335' FWL	200' FNL	2215' FWL