



FIGURES

Figure 1: Soil Analytical Map

Figure 2: Polycyclic Aromatic Hydrocarbons Map

Figure 3: Metals in Soil Map

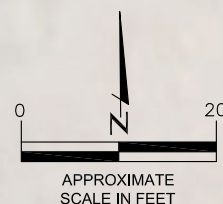
SS-02@0.5'
01/24/22
0.5'
B = <0.00200
T = <0.00200
E = <0.00200
X = <0.00200
G = <0.200
D = 29.2
R = <100
1,2,4-TMB = <0.00200
1,3,5-TMB = <0.00200
Brn= 0.238
EC = 3.32
SAR= 2.29
pH = 7.62

BACKGROUND-01@0.5'
01/24/22
0.5'
B = NA
T = NA
E = NA
X = NA
G = NA
D = NA
R = NA
1,2,4-TMB = NA
1,3,5-TMB = NA
Brn= **3.24**
EC = **7.80**
SAR= **21.5**
pH = NA

SS-01
SS-02
SS-03

SS-01@0.5'
01/24/22
0.5'
B = <0.00200
T = <0.00200
E = <0.00200
X = <0.00200
G = <0.200
D = 33.5
R = <100
1,2,4-TMB = <0.00200
1,3,5-TMB = <0.00200
Brn= **2.85**
EC = **8.31**
SAR= **54.1**
pH = 8.15

SS-03@0.5'
01/24/22
0.5'
B = <0.00200
T = <0.00200
E = <0.00200
X = <0.00200
G = <0.200
D = 57.1
R = 109
1,2,4-TMB = <0.00200
1,3,5-TMB = <0.00200
Brn= **3.07**
EC = **7.97**
SAR= **20.8**
pH = 7.90



LEGEND

- APPROXIMATE ASSESSMENT/EXCAVATION BOUNDARIES
- APPROXIMATE LOCATION OF SOIL SAMPLE SUBMITTED FOR LABORATORY ANALYSIS

PARAMETERS

SAMPLE LOCATION
DATE
DEPTH (FEET)
B = BENZENE (mg/kg)
T = TOLUENE (mg/kg)
E = ETHYLBENZENE (mg/kg)
X = TOTAL XYLENES (mg/kg)
G = TPH-GRO (mg/kg)
D = TPH-DRO (mg/kg)
R = TPH-RRO (mg/kg)
1,2,4-TMB = 1,2,4 TRIMETHYLBENZENE (mg/kg)
1,3,5-TMB = 1,3,5 TRIMETHYLBENZENE (mg/kg)
Brn= BORON (mg/L)
EC = SPECIFIC CONDUCTANCE (mmhos/cm)
SAR= SODIUM ADSORPTION RATIO
pH = pH (pH UNITS)

mg/kg = MILLIGRAMS PER KILOGRAM
mg/L = MILLIGRAMS PER LITER
mmhos/cm = MILLIMHOS PER CENTIMETER

NA - NOT ANALYZED

TPH-GRO = TOTAL PETROLEUM HYDROCARBONS - GASOLINE RANGE ORGANICS
TPH-DRO = TOTAL PETROLEUM HYDROCARBONS - DIESEL RANGE ORGANICS
TPH-RRO = TOTAL PETROLEUM HYDROCARBONS - RESIDUAL RANGE ORGANICS

NOTE:
VALUES PRESENTED WITH A LESS THAN SYMBOL (<) DID NOT CONTAIN CONCENTRATIONS AT OR ABOVE LABORATORY DETECTION LIMITS

VALUES PRESENTED IN **BOLD** TYPEFACE EXCEED COGCC TABLE 915-1 REGULATORY LIMITS FOR THAT COMPOUND. VALUES WITH AN ASTERISK (*) EXCEED PROTECTION OF GROUNDWATER SOIL SCREENING LEVELS.

COGCC - COLORADO OIL AND GAS CONSERVATION COMMISSION

SOIL ANALYTICAL MAP
KUNSEMILLER 5-61-20_19 NW21
PRODUCED WATER RELEASE
40.390743 / -104.223089
NW1/4 NW1/4 SEC.21 T5N R61W 6PM
WELD COUNTY, COLORADO
LOCATION ID 434508
SPILL ID 481434

DATE:
02/16/22
DRAWN BY:
AMN
FIG.
NO. 1



EAGLE
ENVIRONMENTAL
CONSULTING, INC.
8000 W 44th Ave, Wheat Ridge, CO 80033
Ph: 303-433-0479 • F: 303-325-5449



LEGEND

- APPROXIMATE ASSESSMENT/EXCAVATION BOUNDARIES
- APPROXIMATE LOCATION OF SOIL SAMPLE SUBMITTED FOR LABORATORY ANALYSIS

PARAMETERS

SAMPLE LOCATION
DATE SAMPLE COLLECTED
APPROXIMATE DEPTH

POLYCYCLIC AROMATIC HYDROCARBONS (PAHs)

NOTE:
CONCENTRATIONS PRESENTED IN mg/kg

mg/kg = MILLIGRAMS PER KILOGRAM

MDL = MINIMUM DETECTION LIMIT

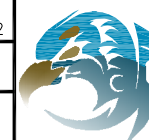
NOTES:
VALUES PRESENTED WITH A LESS THAN SYMBOL (<) DID NOT CONTAIN CONCENTRATIONS AT OR ABOVE LABORATORY MDL AND/OR REPORTING LIMITS

POLYCYCLIC AROMATIC HYDROCARBONS MAP
KUNSE MILLER 5-61-20_19 NW21
PRODUCED WATER RELEASE
40.390743 / -104.223089
NW1/4 NW1/4 SEC.21 T5N R61W 6PM
WELD COUNTY, COLORADO
LOCATION ID 434508
SPILL ID 481434

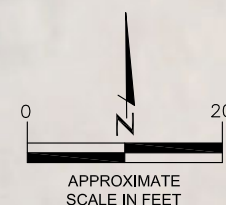
DATE:
02/16/22

DRAWN BY:
AMN

FIG.
NO. 2



EAGLE
ENVIRONMENTAL
CONSULTING, INC.
8000 W 44th Ave, Wheat Ridge, CO 80033
Ph: 303-433-0479 • F: 303-325-5449

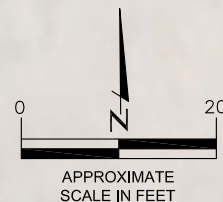


SS-02@0.5'
01/24/22
0.5'
Arsenic = 1.58***
Barium = 58.9
Cadmium = 0.0897
Chromium (VI) = <1.04**(1)
Copper = 3.15
Lead = 4.15
Nickel = 3.15
Selenium = 0.233
Silver = 0.0092
Zinc = 15

BACKGROUND-01@0.5'
01/24/22
0.5'
Arsenic = 1.61***
Barium = NA
Cadmium = NA
Chromium (VI) = NA
Copper = NA
Lead = NA
Nickel = NA
Selenium = NA
Silver = NA
Zinc = NA

(NS)
SS-03
SS-02
SS-01
(NS)

BACKGROUND-01



LEGEND

- APPROXIMATE ASSESSMENT/EXCAVATION BOUNDARIES
- APPROXIMATE LOCATION OF SOIL SAMPLE SUBMITTED FOR LABORATORY ANALYSIS

PARAMETERS

SAMPLE LOCATION
DATE SAMPLE COLLECTED
APPROXIMATE DEPTH
Barium = (mg/kg)
Cadmium = (mg/kg)
Chromium (VI) = (mg/kg)
Copper = (mg/kg)
Lead = (mg/kg)
Nickel = (mg/kg)
Selenium = (mg/kg)
Silver = (mg/kg)
Zinc = (mg/kg)

mg/kg = MILLIGRAMS PER KILOGRAM

(NS) - NOT SAMPLED

(NA) - NOT ANALYZED

NOTE:

VALUES PRESENTED WITH A LESS THAN SYMBOL (<) DID NOT CONTAIN CONCENTRATIONS AT OR ABOVE LABORATORY DETECTION LIMITS

VALUES PRESENTED IN **BOLD** VALUES CONTAIN CONCENTRATIONS EXCEEDING COGCC TABLE 915-1 REGULATORY LIMITS. VALUES WITH ASTERISK (*) EXCEED "PROTECTION OF GROUNDWATER SOIL SCREENING LEVELS" FOR THAT COMPOUND.

**ACHIEVABLE PRACTICAL QUANTITATIVE LIMITS FOR HEXAVALENT CHROMIUM (Cr VI) IN SOILS IS IN THE RANGE OF 0.1 TO 1 mg/kg. (1) SAMPLE REQUIRED DILUTION, RAISING LABORATORY DETECTION AND REPORTING LIMITS - SAMPLE NON-DETECT

***ARSENIC IS NATURALLY OCCURRING IN COLORADO. LOCAL CLEAN-UP LEVEL (2.01 mg/kg) IS 1.25*LOCAL BACKGROUND (1.61 mg/kg).

COGCC = COLORADO OIL AND GAS CONSERVATION COMMISSION

METALS IN SOIL MAP
KUNSEMILLER 5-61-20_19 NW21
PRODUCED WATER RELEASE
40.390743 / -104.223089
NW1/4 NW1/4 SEC.21 T5N R61W 6PM
WELD COUNTY, COLORADO
LOCATION ID 434508
SPILL ID 481434

DATE:
02/16/22
DRAWN BY:
AMN
FIG.
NO. 3



EAGLE
ENVIRONMENTAL
CONSULTING, INC.
8000 W 44th Ave, Wheat Ridge, CO 80033
Ph: 303-433-0479 • F: 303-325-5449



TABLES

Table 1: Photoionization Detector Reading Summary

Table 2: Soil Analytical Results Summary

Table 3: Polycyclic Aromatic Hydrocarbons Analytical Results Summary

Table 4: Metals Analytical Results Summary

TABLE 1
PHOTOIONIZATION DETECTOR READING SUMMARY
KUNSEMILLER 5-61-20_19 NW21
PRODUCED WATER RELEASE
40.390743 / -104.223089
NW1/4 NW1/4 SEC.21 T5N R61W 6PM
WELD COUNTY, COLORADO
LOCATION ID 434508
SPILL ID 481434

Sample Location (Latitude/Longitude)	Date	Approximate Depth (feet)	PID Reading (ppm-v)	Lab Submission (Y/N)
SS-01 @ 0.5' (40.390730 / -104.223152)	01/24/22	0.5	3.7	Y
SS-02 @ 0.5' (40.390749 / -104.223122)	01/24/22	0.5	5.4	Y
SS-03 @ 0.5 (40.390754 / -104.223094)	01/24/22	0.5	4.9	Y
Background-01 @ 0.5' (40.390763 / -104.222927)	01/24/22	0.5	4.1	Y
(Y/N) = Yes or No ppm-v = parts per million by volume PID = Photoionization Detector				

TABLE 2
SOIL ANALYTICAL RESULTS SUMMARY
KUNSEMILLER 5-61-20_19 NW21
PRODUCED WATER RELEASE
40.390743 / -104.223089
NW1/4 NW1/4 SEC.21 T5N R61W 6PM
WELD COUNTY, COLORADO
LOCATION ID 434508
SPILL ID 481434

Sample Location (Latitude/Longitude)	Date	Approximate Depth (feet)	PID Reading (ppm-v)	Benzene (mg/kg)	Toluene (mg/kg)	Ethylbenzene (mg/kg)	Total Xylenes (mg/kg)	TPH-GRO (mg/kg)	TPH-DRO (mg/kg)	TPH-RRO (mg/kg)	1,2,4-TMB (mg/kg)	1,3,5-TMB (mg/kg)	Boron (mg/L)	Specific Conductance (mmhos/cm)	pH (pH units)	SAR
COGCC Table 915-1 Residential Screening Levels (mg/kg)				1.20	490	5.8	58	500			30	27	2	<4	6-8.3	<6
COGCC Table 915-1 Protection of Groundwater Soil Screening Levels				0.0026	0.69	0.78	9.9	--			0.0081	0.0087	--	--	--	--
SS-01 @ 0.5' (40.390730 / -104.223152)	01/24/22	0.5	3.7	<0.00200	<0.00200	<0.00200	<0.00200	<0.200	33.5	<100	<0.00200	<0.00200	2.85	8.31	8.15	54.1
SS-02 @ 0.5' (40.390749 / -104.223122)	01/24/22	0.5	5.4	<0.00200	<0.00200	<0.00200	<0.00200	<0.200	29.2	<100	<0.00200	<0.00200	0.238	3.32	7.62	2.29
SS-03 @ 0.5 (40.390754 / -104.223094)	01/24/22	0.5	4.9	<0.00200	<0.00200	<0.00200	<0.00200	<0.200	57.1	109	<0.00200	<0.00200	3.07	7.970	7.90	20.8
Background-01 @ 0.5' (40.390763 / -104.222927)	01/24/22	0.5	4.1	NA	NA	NA	NA	NA	NA	NA	NA	NA	3.24	7.80	NA	21.5
COGCC = Colorado Oil and Gas Conservation Commission mg/kg = milligrams per kilogram mmhos/cm = millimhos per centimeter PID = Photoionization Detector ppm-v = parts per million by volume mg/L = milligrams per liter SAR = Sodium Adsorption Ratio Note: Values presented with a less than symbol (<) did not contain concentrations at or above the laboratory reporting limit. Note: Values presented in BOLD contained concentrations exceeding COGCC Table 915-1 Regulatory Limits. Values presented with asterisk (*) exceed COGCC Table 915-1 Protection of Groundwater Soil Screening Levels.																

TABLE 3
PAH ANALYTICAL RESULTS SUMMARY
KUNSEMILLER 5-61-20_19 NW21
PRODUCED WATER RELEASE
40.390743 / -104.223089
NW1/4 NW1/4 SEC.21 T5N R61W 6PM
WELD COUNTY, COLORADO
LOCATION ID 434508
SPILL ID 481434

Sample Location (Latitude/Longitude)	Date	Approximate Depth (feet)	PID Reading (ppm- v)	1-Methyl- naphthalene (mg/kg)	2-Methyl-naphthalene (mg/kg)	Acenaphthene (mg/kg)	Anthracene (mg/kg)	Benzo(a)-anthracene (mg/kg)	Benzo(a)- pyrene (mg/kg)	Benzo(b)- fluoranthene (mg/kg)	Benzo(k)- fluoranthene (mg/kg)	Chrysene (mg/kg)	Dibenzo(a,h)- anthracene (mg/kg)	Fluoranthene (mg/kg)	Fluorene (mg/kg)	Indeno(1,2,3- cd)-pyrene (mg/kg)	Naphthalene (mg/kg)	Pyrene (mg/kg)
COGCC Table 915-1 Residential Screening Levels				18	24	360	1,800	1.1	0.11	1.1	11	110	0.11	240	240	1.1	2	180
COGCC Table 915-1 Protection of Groundwater Soil Screening Levels				0.006	0.019	0.55	5.8	0.011	0.24	0.3	2.9	9	0.096	8.9	0.54	0.98	0.0038	1.3
SS-01 @ 0.5' (40.390730 / -104.223152)	01/24/22	0.5	3.7	0.00441	<0.00335	<0.00335	<0.00335	<0.00335	<0.00335	<0.00335	<0.00335	0.0198	<0.00335	<0.00335	0.00757	<0.00335	<0.00335	0.00863
SS-02 @ 0.5' (40.390749 / -104.223122)	01/24/22	0.5	5.4	<0.00335	<0.00335	<0.00335	<0.00335	<0.00335	<0.00335	<0.00335	<0.00335	<0.00335	<0.00335	<0.00335	<0.00335	<0.00335	<0.00335	<0.00335
SS-03 @ 0.5' (40.390754 / -104.223094)	01/24/22	0.5	4.9	<0.00335	<0.00335	<0.00335	<0.00335	<0.00335	<0.00335	<0.00335	<0.00335	0.00606	<0.00335	<0.00335	<0.00335	<0.00335	<0.00335	<0.00335
COGCC = Colorado Oil and Gas Conservation Commission mg/kg = milligrams per kilogram ppm-v = parts per million by volume Note: Values presented with a less than symbol (<) did not contain concentrations at or above the laboratory reporting limit. Note: Values presented in BOLD contained concentrations exceeding COGCC Table 915-1 Regulatory Limits. Values presented with asterisk (*) exceed COGCC Table 915-1 Protection of Groundwater Soil Screening Levels.																		

TABLE 4
METALS ANALYTICAL RESULTS SUMMARY
KUNSEMILLER 5-61-20_19 NW21
PRODUCED WATER RELEASE
40.390743 / -104.223089
NW1/4 NW1/4 SEC.21 T5N R61W 6PM
WELD COUNTY, COLORADO
LOCATION ID 434508
SPILL ID 481434

Sample Location (Latitude/Longitude)	Date	Approximate Depth (feet)	Arsenic (mg/kg)	Barium (mg/kg)	Cadmium (mg/kg)	Hexavalent Chromium (mg/kg)	Copper (mg/kg)	Lead (mg/kg)	Nickel (mg/kg)	Selenium (mg/kg)	Silver (mg/kg)	Zinc (mg/kg)
COGCC Table 915-1 Residential Screening Levels			0.68***	15,000	71	0.3**	3,100	400	1,500	390	390	23,000
COGCC Table 915-1 Protection of Groundwater Soil Screening Levels			0.29***	82	0.38	0.00067**	46	14	26	0.26	0.8	370
Local Cleanup Levels			1.32***	--	--	0.1 to 1**	--	--	--	--	--	--
SS-02 @ 0.5' (40.390749 / -104.223122)	01/24/22	0.5	1.58***	58.9	0.0897	<1.02**(1)	3.15	4.15	3.15	0.233	0.01	15
Background-01 @ 0.5' (40.390763 / -104.222927)	01/24/22	0.5	1.61***	NA	NA	NA	NA	NA	NA	NA	NA	NA
<p>COGCC = Colorado Oil and Gas Conservation Commission</p> <p>mg/kg = milligrams per kilogram</p> <p>Notes: Values presented with a less than symbol (<) did not contain concentrations at or above the laboratory reporting limit or minimum detection levels.</p> <p>Values presented in BOLD contained concentrations exceeding applicable COGCC Table 915-1 Regulatory Limits</p> <p>Values presented in BOLD+* contained concentrations exceeding COGCC Table 915-1 Protection of Groundwater Soil Screening Levels</p> <p>**Achievable practical quantitative limits for Hexavalent Chromium in soils is in the range of 0.1 to 1 mg/kg. (1) Sampled required dilution raising laboratory reporting and detection limits - Sample non-detect</p> <p>***Arsenic is naturally occurring in Colorado. Local clean-up level (2.01 mg/kg) is 1.25*Background (1.61 mg/kg)</p>												



ATTACHMENT A

Photolog

Kunsemiller 5-61-20_19 NW21

NWNW Sec.21 T5N R61W 6PM

Weld, County, CO

Location ID 434508

Spill ID 481434

Produced Water Release

January 2021

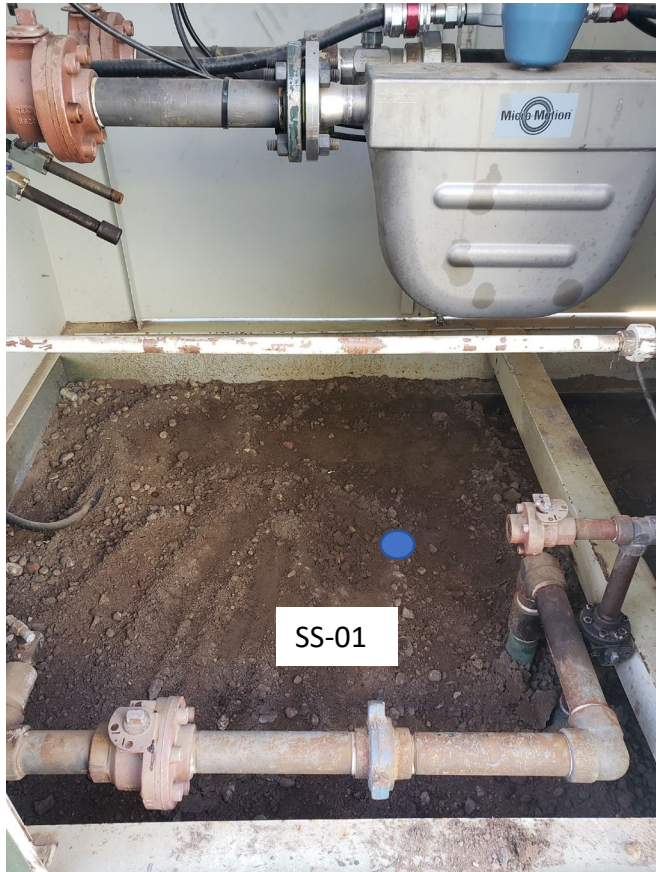


EAGLE
ENVIRONMENTAL
CONSULTING, INC.

8000 W 44th Ave, Wheat Ridge, CO 80033
Ph: 303-433-0479 • F: 303-325-5449



Confirmation Sampling – 01/24/22



Confirmation samples collected following visual delineation/soil removal

Samples:

SS-01 @ 0.5' – 3.7 ppm-v

SS-02 @ 0.5' – 5.4 ppm-v

SS-03 @ 0.5' – 4.9 ppm-v



ATTACHMENT B

Laboratory Analytical Reports



February 07, 2022

Eagle Environmental Consulting, Inc.

Martin C Eckert III

8000 W 44th Ave

Wheat Ridge CO 80033

**Project Name - Bonanza - Kunesmiller 5-61-20_19 Project Number - -
NW21**

Attached are your analytical results for Bonanza - Kunesmiller 5-61-20_19 NW21 received by Origins Laboratory, Inc. January 24, 2022. This project is associated with Origins project number Y201432-01.

The analytical results in the following report were analyzed under the guidelines of EPA Methods. These methods are identified as follows; "SW" are defined in SW-846, "EPA" are defined in 40CFR part 136 and "SM" are defined in the most current revision of Standard Methods For the Examination of Water and Wastewater.

The analytical results apply specifically to the samples and analyses specified per the attached Chain of Custody. As such, this report shall not be reproduced except in full, without the written approval of Origin's laboratory.

Unless otherwise noted, the analytical results for all soil samples are reported on a wet weight basis. All analytical analyses were performed under NELAP guidelines unless noted by a data qualifier.

Any holding time exceedances, deviations from the method specifications or deviations from Origins Laboratory's Standard Operating Procedures are outlined in the case narrative.

Thank you for selecting Origins for your analytical needs. Please contact us with any questions concerning this report, or if we can help with anything at all.

Origins Laboratory, Inc.
303.433.1322
o-squad@oelabinc.com



1725 Elk Place, Denver, CO 80211 | Phone: 303.433.1322 | Fax: 303.265.9645

Eagle Environmental Consulting, Inc.

8000 W 44th Ave

Wheat Ridge CO 80033

Martin C Eckert III

Project Number: -

Project: Bonanza - Kunesmiller 5-61-20_19 NW21

CROSS REFERENCE REPORT

Sample ID	Laboratory ID	Matrix	Date Sampled	Date Received
SS-01@0.5'	Y201432-01	Soil	January 24, 2022 14:41	01/24/2022 16:41
SS-02@0.5'	Y201432-02	Soil	January 24, 2022 14:46	01/24/2022 16:41
SS-03@0.5'	Y201432-03	Soil	January 24, 2022 14:51	01/24/2022 16:41

Origins Laboratory, Inc.



The results in this report apply to the samples analyzed in accordance with the chain of custody document. This analytical report must be reproduced in its entirety.

Eagle Environmental Consulting, Inc.
8000 W 44th Ave
Wheat Ridge CO 80033

Martin C Eckert III
Project Number: -
Project: Bonanza - Kunesmiller 5-61-20_19 NW21

ORIGINS
LABORATORY, INC

www.originslaboratory.com

1801432

page 1 of 1

Client: Eagle Environmental Consulting
Address: 8000 W 44th Ave
Wheat Ridge, CO 80033
Telephone Number: 303-433-0479
Email Address: mce3@eagle-enviro.com

Project Manager: Martin Eckert III
Project Name: Kunesmiller 5-61-20_19 NW21
Project Number: _____
Samples Collected By: TC

1725 Elk Place | Denver, CO 80211 | Phone: 303.433.1322 | Fax: 303.265.9645

Sample ID Description	Date Sampled	Time Sampled	# of Containers	Preservative				Matrix	Analysis	Sample Instructions
				Unpreserved	HCl	HNO ₃	Other			
SS-01 @ 0.5'	01-24-22	1441	2	X				Soil	EL, SAR, pH=	1
SS-02 @ 0.5'	↓	1446	↓	↓				Groundwater	Scheduled Date Page 2	2
SS-03 @ 0.5'	↓	1451	↓	↓				Other		3
										4
										5
										6
										7
										8
										9
										10

Relinquished By: Trevor Copple

Relinquished By:

Date: 01-24-22

Date:

Time: 1641

Time:

Received By:

Received By:

Date: 11/24/22

Date:

Time: 1641

Time:

Turnaround Time:

Same Day ☐ 24 Hr ☐

48 Hr ☐ 72 Hr ☐

Standard ☒

Date Results Needed: 10/20/22

Temp Received: 19

Bill to Luke

Origins Laboratory, Inc.

Jordan A. Merrill

The results in this report apply to the samples analyzed in accordance with the chain of custody document. This analytical report must be reproduced in its entirety.

Eagle Environmental Consulting, Inc.
8000 W 44th Ave
Wheat Ridge CO 80033

Martin C Eckert III
Project Number: -
Project: Bonanza - Kunesmiller 5-61-20_19 NW21

Origins Laboratory F-012207-01-R1
Effective Date: 01/09/12

Sample Receipt Checklist

Origins Work Order: 1201432 Client: Eagle
Client Project ID: Kunesmiller 5-61-20-19

Checklist Completed by: AM Shipped Via: HD
(UPS, FedEx, Hand Delivered, Pick-up, etc.)
Date/time completed: 1/24/22 Airbill #: NA

Matrix(s) Received: (Check all that apply): / Soil/Solid / Water / Other: _____

Cooler Number/Temperature: 1 / 19 °C / °C / °C (Describe) _____ °C

Thermometer ID: 1003

Requirement Description	Yes	No	N/A	Comments (if any)
If samples require cooling, was the temperature between 0°C to ≤ 6°C ⁽¹⁾ ?	<u>/</u>			
Is there ice present (document if blue ice is used)	<u>/</u>			
Are custody seals present on cooler? (if so, document in comments if they are signed and dated, broken or intact)		<u>/</u>		
Are custody seals present on each sample container? (if so, document in comments if they are signed and dated, broken or intact)		<u>/</u>		
Were all samples received intact ⁽¹⁾ ?	<u>/</u>			
Was adequate sample volume provided ⁽¹⁾ ?	<u>/</u>			
Are short holding time analytes or samples with HTs due within 48 hours present ⁽¹⁾ ?		<u>/</u>		
Is a chain-of-custody (COC) present and filled out completely ⁽¹⁾ ?	<u>/</u>			
Does the COC agree with the number and type of sample bottles received ⁽¹⁾ ?	<u>/</u>			
Do the sample IDs on the bottle labels match the COC ⁽¹⁾ ?	<u>/</u>			
Is the COC properly relinquished by the client with date and time recorded ⁽¹⁾ ?	<u>/</u>			
For volatiles in water – is there headspace (> ¼ inch bubble) present? If yes, contact client and note in narrative.			<u>/</u>	
Are samples preserved that require preservation and was it checked ⁽¹⁾ ? (note ID of confirmation instrument used in comments) / (preservation is not confirmed for subcontracted analyses in order to insure sample integrity) / (pH < 2 for samples preserved with HNO ₃ , HCL, H ₂ SO ₄) / (pH > 10 for samples preserved with NaAsO ₂ +NaOH, ZnAc+NaOH)			<u>/</u>	
Additional Comments (if any):				

⁽¹⁾If NO, then contact the client before proceeding with analysis and note date/time and person contacted as well as the corrective action to in the additional comments (above) and the case narrative.

Reviewed by: AM (Project Manager) Date/Time Reviewed: 1-25-22

Origins Laboratory, Inc.

Jordan A. Merrill

The results in this report apply to the samples analyzed in accordance with the chain of custody document. This analytical report must be reproduced in its entirety.

Eagle Environmental Consulting, Inc.
8000 W 44th Ave
Wheat Ridge CO 80033

Martin C Eckert III
Project Number: -
Project: Bonanza - Kunesmiller 5-61-20_19 NW21

SS-01@0.5'

1/24/2022 2:41:00PM

Analyte	Result	Reporting Limit	Units	Dilution	Batch	Analyst	Prepared	Analyzed	Notes
---------	--------	-----------------	-------	----------	-------	---------	----------	----------	-------

Y201432-01 (Soil)
Origins Laboratory, Inc.

Boron (DTPA Sorbitol)

Boron	2.85	0.201	mg/L	1	B2A2504	KAP	01/25/2022	01/26/2022	
-------	------	-------	------	---	---------	-----	------------	------------	--

DRO/ORO by EPA 8015D

Diesel (C10-C28)	33.5	25.0	mg/kg	1	B2A2501	EPC	01/25/2022	01/28/2022	
Residual Range Organics (C28-C40)	ND	100	"	"	"	EPC	"	"	U

Surrogate: o-Terphenyl	103 %	50-150			"	"	"	
------------------------	-------	--------	--	--	---	---	---	--

GBTEX+TMBs by 8260D

1,2,4-Trimethylbenzene	ND	0.00200	mg/kg	1	B2A2626	ZZZ	01/26/2022	02/04/2022	U
1,3,5-Trimethylbenzene	ND	0.00200	"	"	"	ZZZ	"	"	U
Benzene	ND	0.00200	"	"	"	ZZZ	"	"	U
Ethylbenzene	ND	0.00200	"	"	"	ZZZ	"	"	U
Toluene	ND	0.00200	"	"	"	ZZZ	"	"	U
Xylenes, total	ND	0.00200	"	"	"	ZZZ	"	"	U
Gasoline Range Hydrocarbons	ND	0.200	"	"	"	ZZZ	"	"	U

Surrogate: 1,2-Dichloroethane-d4	102 %	70-130			"	"	"	
Surrogate: Toluene-d8	108 %	70-130			"	"	"	
Surrogate: 4-Bromofluorobenzene	101 %	70-130			"	"	"	

Metals by Saturated Paste by EPA 6010

Origins Laboratory, Inc.



The results in this report apply to the samples analyzed in accordance with the chain of custody document. This analytical report must be reproduced in its entirety.

Eagle Environmental Consulting, Inc.
8000 W 44th Ave
Wheat Ridge CO 80033

Martin C Eckert III
Project Number: -
Project: Bonanza - Kunesmiller 5-61-20_19 NW21

SS-01@0.5'

1/24/2022 2:41:00PM

Analyte	Result	Reporting Limit	Units	Dilution	Batch	Analyst	Prepared	Analyzed	Notes
---------	--------	-----------------	-------	----------	-------	---------	----------	----------	-------

Y201432-01 (Soil)

Origins Laboratory, Inc.

Metals by Saturated Paste by EPA 6010

Calcium	0.604	0.499	meq/L	10	[CALC]	KAP	01/25/2022	01/26/2022
Magnesium	ND	0.823	"	"	"	KAP	"	"
Sodium	34.1	0.435	"	"	"	KAP	"	"

pH in Soil by 9045D

pH	8.15		pH Units	1	B2A2505	ACC	01/25/2022	01/26/2022
----	------	--	----------	---	---------	-----	------------	------------

SAR by 20B Saturated Paste

SAR	54.1		SAR	1	B2A2503	KAP	01/25/2022	01/26/2022
-----	------	--	-----	---	---------	-----	------------	------------

Specific Conductance Mod. 9050A

Specific Conductance (EC)	8.31	0.00500	mmhos/cm	1	B2A2506	ACC	01/25/2022	01/26/2022
---------------------------	------	---------	----------	---	---------	-----	------------	------------

Waypoint Analytical, Inc.

PAH by 8270D SIM

1-Methylnaphthalene	0.00441	0.00335	mg/Kg	5	L596558		01/27/2022	01/28/2022
2-Methylnaphthalene	ND	0.00335	"	"	"		"	"
Acenaphthene	ND	0.00335	"	"	"		"	"
Anthracene	ND	0.00335	"	"	"		"	"

Origins Laboratory, Inc.



The results in this report apply to the samples analyzed in accordance with the chain of custody document. This analytical report must be reproduced in its entirety.

Eagle Environmental Consulting, Inc.
8000 W 44th Ave
Wheat Ridge CO 80033

Martin C Eckert III
Project Number: -
Project: Bonanza - Kunesmiller 5-61-20_19 NW21

SS-01@0.5'

1/24/2022 2:41:00PM

Analyte	Result	Reporting Limit	Units	Dilution	Batch	Analyst	Prepared	Analyzed	Notes
---------	--------	-----------------	-------	----------	-------	---------	----------	----------	-------

Y201432-01 (Soil)
Waypoint Analytical, Inc.

PAH by 8270D SIM

Benzo(a)anthracene	ND	0.00335	mg/Kg	5	L596558		01/27/2022	01/28/2022
Benzo(a)pyrene	ND	0.00335	"	"	"		"	"
Benzo(b)fluoranthene	ND	0.00335	"	"	"		"	"
Benzo(k)fluoranthene	ND	0.00335	"	"	"		"	"
Chrysene	0.0198	0.00335	"	"	"		"	"
Dibenz(a,h)anthracene	ND	0.00335	"	"	"		"	"
Fluoranthene	ND	0.00335	"	"	"		"	"
Fluorene	0.00757	0.00335	"	"	"		"	"
Indeno(1,2,3-cd)pyrene	ND	0.00335	"	"	"		"	"
Naphthalene	ND	0.00335	"	"	"		"	"
Pyrene	0.00863	0.00335	"	"	"		"	"

Surrogate: 2-Fluorobiphenyl	66.2 %	33-115			"	"	"
Surrogate: 4-Terphenyl-d14	79 %	33-122			"	"	"
Surrogate: Nitrobenzene-d5	55.2 %	29-110			"	"	"

Origins Laboratory, Inc.



The results in this report apply to the samples analyzed in accordance with the chain of custody document. This analytical report must be reproduced in its entirety.

Eagle Environmental Consulting, Inc.
8000 W 44th Ave
Wheat Ridge CO 80033

Martin C Eckert III
Project Number: -
Project: Bonanza - Kunesmiller 5-61-20_19 NW21

SS-02@0.5'

1/24/2022 2:46:00PM

Analyte	Result	Reporting Limit	Units	Dilution	Batch	Analyst	Prepared	Analyzed	Notes
---------	--------	-----------------	-------	----------	-------	---------	----------	----------	-------

Y201432-02 (Soil)
Origins Laboratory, Inc.

Boron (DTPA Sorbitol)

Boron	0.238	0.198	mg/L	1	B2A2504	KAP	01/25/2022	01/26/2022	
-------	-------	-------	------	---	---------	-----	------------	------------	--

DRO/ORO by EPA 8015D

Diesel (C10-C28)	29.2	25.0	mg/kg	1	B2A2501	EPC	01/25/2022	01/28/2022	
Residual Range Organics (C28-C40)	ND	100	"	"	"	EPC	"	"	U

Surrogate: o-Terphenyl	101 %	50-150			"	"	"	
------------------------	-------	--------	--	--	---	---	---	--

GBTEX+TMBs by 8260D

1,2,4-Trimethylbenzene	ND	0.00200	mg/kg	1	B2A2626	ZZZ	01/26/2022	02/04/2022	U
1,3,5-Trimethylbenzene	ND	0.00200	"	"	"	ZZZ	"	"	U
Benzene	ND	0.00200	"	"	"	ZZZ	"	"	U
Ethylbenzene	ND	0.00200	"	"	"	ZZZ	"	"	U
Toluene	ND	0.00200	"	"	"	ZZZ	"	"	U
Xylenes, total	ND	0.00200	"	"	"	ZZZ	"	"	U
Gasoline Range Hydrocarbons	ND	0.200	"	"	"	ZZZ	"	02/04/2022	U

Surrogate: 1,2-Dichloroethane-d4	102 %	70-130			"	"	02/04/2022
Surrogate: Toluene-d8	107 %	70-130			"	"	"
Surrogate: 4-Bromofluorobenzene	102 %	70-130			"	"	"

Metals by Saturated Paste by EPA 6010

Origins Laboratory, Inc.



The results in this report apply to the samples analyzed in accordance with the chain of custody document. This analytical report must be reproduced in its entirety.

Eagle Environmental Consulting, Inc.
8000 W 44th Ave
Wheat Ridge CO 80033

Martin C Eckert III
Project Number: -
Project: Bonanza - Kunesmiller 5-61-20_19 NW21

SS-02@0.5'

1/24/2022 2:46:00PM

Analyte	Result	Reporting Limit	Units	Dilution	Batch	Analyst	Prepared	Analyzed	Notes
---------	--------	-----------------	-------	----------	-------	---------	----------	----------	-------

Y201432-02 (Soil)

Origins Laboratory, Inc.

Metals by Saturated Paste by EPA 6010

Calcium	18.8	0.499	meq/L	10	[CALC]	KAP	01/26/2022	01/27/2022
Magnesium	5.13	0.823	"	"	"	KAP	"	"
Sodium	7.91	0.435	"	"	"	KAP	"	"

pH in Soil by 9045D

pH	7.62		pH Units	1	B2A2605	ACC	01/26/2022	01/27/2022
----	------	--	----------	---	---------	-----	------------	------------

SAR by 20B Saturated Paste

SAR	2.29		SAR	1	B2A2602	KAP	01/26/2022	01/27/2022
-----	------	--	-----	---	---------	-----	------------	------------

Specific Conductance Mod. 9050A

Specific Conductance (EC)	3.32	0.00500	mmhos/cm	1	B2A2604	ACC	01/26/2022	01/27/2022
---------------------------	------	---------	----------	---	---------	-----	------------	------------

Waypoint Analytical, Inc.

PAH by 8270D SIM

1-Methylnaphthalene	ND	0.00335	mg/Kg	5	L596558		01/27/2022	01/28/2022
2-Methylnaphthalene	ND	0.00335	"	"	"		"	"
Acenaphthene	ND	0.00335	"	"	"		"	"
Anthracene	ND	0.00335	"	"	"		"	"

Origins Laboratory, Inc.

The results in this report apply to the samples analyzed in accordance with the chain of custody document. This analytical report must be reproduced in its entirety.

Eagle Environmental Consulting, Inc.
8000 W 44th Ave
Wheat Ridge CO 80033

Martin C Eckert III
Project Number: -
Project: Bonanza - Kunesmiller 5-61-20_19 NW21

SS-02@0.5'

1/24/2022 2:46:00PM

Analyte	Result	Reporting Limit	Units	Dilution	Batch	Analyst	Prepared	Analyzed	Notes
---------	--------	-----------------	-------	----------	-------	---------	----------	----------	-------

Y201432-02 (Soil)
Waypoint Analytical, Inc.

PAH by 8270D SIM

Benzo(a)anthracene	ND	0.00335	mg/Kg	5	L596558		01/27/2022	01/28/2022	
Benzo(a)pyrene	ND	0.00335	"	"	"		"	"	
Benzo(b)fluoranthene	ND	0.00335	"	"	"		"	"	
Benzo(k)fluoranthene	ND	0.00335	"	"	"		"	"	
Chrysene	ND	0.00335	"	"	"		"	"	
Dibenz(a,h)anthracene	ND	0.00335	"	"	"		"	"	
Fluoranthene	ND	0.00335	"	"	"		"	"	
Fluorene	ND	0.00335	"	"	"		"	"	
Indeno(1,2,3-cd)pyrene	ND	0.00335	"	"	"		"	"	
Naphthalene	ND	0.00335	"	"	"		"	"	
Pyrene	ND	0.00335	"	"	"		"	"	

Surrogate: 2-Fluorobiphenyl	60.4 %	33-115			"		"	"	
Surrogate: 4-Terphenyl-d14	71.6 %	33-122			"		"	"	
Surrogate: Nitrobenzene-d5	49.7 %	29-110			"		"	"	

Total Metals by 6020B

Arsenic	1.58	0.25	mg/Kg	5	L596446		01/26/2022	01/28/2022	
Barium	58.9	0.25	"	"	"		"	"	
Cadmium	0.0897	0.25	"	"	"		"	"	J
Copper	3.15	0.25	"	"	"		"	"	
Lead	4.15	0.25	"	"	"		"	"	

Origins Laboratory, Inc.



The results in this report apply to the samples analyzed in accordance with the chain of custody document. This analytical report must be reproduced in its entirety.

Eagle Environmental Consulting, Inc.
8000 W 44th Ave
Wheat Ridge CO 80033

Martin C Eckert III
Project Number: -
Project: Bonanza - Kunesmiller 5-61-20_19 NW21

SS-02@0.5'

1/24/2022 2:46:00PM

Analyte	Result	Reporting Limit	Units	Dilution	Batch	Analyst	Prepared	Analyzed	Notes
---------	--------	-----------------	-------	----------	-------	---------	----------	----------	-------

Y201432-02 (Soil)

Waypoint Analytical, Inc.

Total Metals by 6020B

Nickel	3.15	0.25	mg/Kg	5	L596446		01/26/2022	01/28/2022	
Selenium	0.233	0.25	"	"	"		"	"	J
Silver	0.0092	0.25	"	"	"		"	"	J
Zinc	15	2.5	"	"	"		"	"	

Total Metals by 7196A

Chromium, Hexavalent	ND	1.04	mg/Kg	2	L597269		01/24/2022	02/01/2022	
----------------------	----	------	-------	---	---------	--	------------	------------	--

Origins Laboratory, Inc.



The results in this report apply to the samples analyzed in accordance with the chain of custody document. This analytical report must be reproduced in its entirety.

Eagle Environmental Consulting, Inc.
8000 W 44th Ave
Wheat Ridge CO 80033

Martin C Eckert III
Project Number: -
Project: Bonanza - Kunesmiller 5-61-20_19 NW21

SS-03@0.5'

1/24/2022 2:51:00PM

Analyte	Result	Reporting Limit	Units	Dilution	Batch	Analyst	Prepared	Analyzed	Notes
---------	--------	-----------------	-------	----------	-------	---------	----------	----------	-------

Y201432-03 (Soil)
Origins Laboratory, Inc.

Boron (DTPA Sorbitol)

Boron	3.07	0.199	mg/L	1	B2A2504	KAP	01/25/2022	01/26/2022	
-------	------	-------	------	---	---------	-----	------------	------------	--

DRO/ORO by EPA 8015D

Diesel (C10-C28)	57.1	25.0	mg/kg	1	B2A2501	EPC	01/25/2022	01/28/2022	
Residual Range Organics (C28-C40)	109	100	"	"	"	EPC	"	"	

Surrogate: o-Terphenyl	92.6 %	50-150			"	"	"	
------------------------	--------	--------	--	--	---	---	---	--

GBTEX+TMBs by 8260D

1,2,4-Trimethylbenzene	ND	0.00200	mg/kg	1	B2A2626	ZZZ	01/26/2022	02/04/2022	U
1,3,5-Trimethylbenzene	ND	0.00200	"	"	"	ZZZ	"	"	U
Benzene	ND	0.00200	"	"	"	ZZZ	"	"	U
Ethylbenzene	ND	0.00200	"	"	"	ZZZ	"	"	U
Toluene	ND	0.00200	"	"	"	ZZZ	"	"	U
Xylenes, total	ND	0.00200	"	"	"	ZZZ	"	"	U
Gasoline Range Hydrocarbons	ND	0.200	"	"	"	ZZZ	"	02/04/2022	U

Surrogate: 1,2-Dichloroethane-d4	105 %	70-130			"	"	02/04/2022
Surrogate: Toluene-d8	107 %	70-130			"	"	"
Surrogate: 4-Bromofluorobenzene	102 %	70-130			"	"	"

Metals by Saturated Paste by EPA 6010

Origins Laboratory, Inc.



The results in this report apply to the samples analyzed in accordance with the chain of custody document. This analytical report must be reproduced in its entirety.

Eagle Environmental Consulting, Inc.
8000 W 44th Ave
Wheat Ridge CO 80033

Martin C Eckert III
Project Number: -
Project: Bonanza - Kunesmiller 5-61-20_19 NW21

SS-03@0.5'

1/24/2022 2:51:00PM

Analyte	Result	Reporting Limit	Units	Dilution	Batch	Analyst	Prepared	Analyzed	Notes
---------	--------	-----------------	-------	----------	-------	---------	----------	----------	-------

Y201432-03 (Soil)

Origins Laboratory, Inc.

Metals by Saturated Paste by EPA 6010

Calcium	11.8	0.499	meq/L	10	[CALC]	KAP	01/26/2022	01/27/2022
Magnesium	3.70	0.823	"	"	"	KAP	"	"
Sodium	57.8	0.435	"	"	"	KAP	"	"

pH in Soil by 9045D

pH	7.90		pH Units	1	B2A2605	ACC	01/26/2022	01/27/2022
----	------	--	----------	---	---------	-----	------------	------------

SAR by 20B Saturated Paste

SAR	20.8		SAR	1	B2A2602	KAP	01/26/2022	01/27/2022
-----	------	--	-----	---	---------	-----	------------	------------

Specific Conductance Mod. 9050A

Specific Conductance (EC)	7.97	0.00500	mmhos/cm	1	B2A2604	ACC	01/26/2022	01/27/2022
---------------------------	------	---------	----------	---	---------	-----	------------	------------

Waypoint Analytical, Inc.

PAH by 8270D SIM

1-Methylnaphthalene	ND	0.00335	mg/Kg	5	L596558		01/27/2022	01/28/2022
2-Methylnaphthalene	ND	0.00335	"	"	"		"	"
Acenaphthene	ND	0.00335	"	"	"		"	"
Anthracene	ND	0.00335	"	"	"		"	"

Origins Laboratory, Inc.



The results in this report apply to the samples analyzed in accordance with the chain of custody document. This analytical report must be reproduced in its entirety.

Eagle Environmental Consulting, Inc.
8000 W 44th Ave
Wheat Ridge CO 80033

Martin C Eckert III
Project Number: -
Project: Bonanza - Kunesmiller 5-61-20_19 NW21

SS-03@0.5'

1/24/2022 2:51:00PM

Analyte	Result	Reporting Limit	Units	Dilution	Batch	Analyst	Prepared	Analyzed	Notes
---------	--------	-----------------	-------	----------	-------	---------	----------	----------	-------

Y201432-03 (Soil)
Waypoint Analytical, Inc.

PAH by 8270D SIM

Benzo(a)anthracene	ND	0.00335	mg/Kg	5	L596558		01/27/2022	01/28/2022	
Benzo(a)pyrene	ND	0.00335	"	"	"		"	"	
Benzo(b)fluoranthene	ND	0.00335	"	"	"		"	"	
Benzo(k)fluoranthene	ND	0.00335	"	"	"		"	"	
Chrysene	0.00606	0.00335	"	"	"		"	"	
Dibenz(a,h)anthracene	ND	0.00335	"	"	"		"	"	
Fluoranthene	ND	0.00335	"	"	"		"	"	
Fluorene	ND	0.00335	"	"	"		"	"	
Indeno(1,2,3-cd)pyrene	ND	0.00335	"	"	"		"	"	
Naphthalene	ND	0.00335	"	"	"		"	"	
Pyrene	ND	0.00335	"	"	"		"	"	

Surrogate: 2-Fluorobiphenyl	64 %	33-115			"		"	"	
Surrogate: 4-Terphenyl-d14	76.8 %	33-122			"		"	"	
Surrogate: Nitrobenzene-d5	53.7 %	29-110			"		"	"	

Origins Laboratory, Inc.



The results in this report apply to the samples analyzed in accordance with the chain of custody document. This analytical report must be reproduced in its entirety.

Eagle Environmental Consulting, Inc.

8000 W 44th Ave

Wheat Ridge CO 80033

Martin C Eckert III

Project Number: -

Project: Bonanza - Kunesmiller 5-61-20_19 NW21

Extractable Petroleum Hydrocarbons by 8015D - Quality Control

Origins Laboratory, Inc.

Analyte	Result	Reporting Limit	Units	Spike Level	Source Result	%REC	%REC Limits	RPD	RPD Limit	Notes
---------	--------	-----------------	-------	-------------	---------------	------	-------------	-----	-----------	-------

Batch B2A2501 - EPA 3580

Blank (B2A2501-BLK1)

Prepared: 01/25/2022 Analyzed: 01/28/2022

Diesel (C10-C28)	ND	25.0	mg/kg							U
Residual Range Organics (C28-C40)	ND	100	"							U
Surrogate: o-Terphenyl	28		"	24.9		112	50-150			

Origins Laboratory, Inc.



The results in this report apply to the samples analyzed in accordance with the chain of custody document. This analytical report must be reproduced in its entirety.

Eagle Environmental Consulting, Inc.

8000 W 44th Ave

Wheat Ridge CO 80033

Martin C Eckert III

Project Number: -

Project: Bonanza - Kunesmiller 5-61-20_19 NW21

Extractable Petroleum Hydrocarbons by 8015D - Quality Control

Origins Laboratory, Inc.

Analyte	Result	Reporting Limit	Units	Spike Level	Source Result	%REC	%REC Limits	RPD	RPD Limit	Notes
---------	--------	-----------------	-------	-------------	---------------	------	-------------	-----	-----------	-------

Batch B2A2501 - EPA 3580

LCS (B2A2501-BS1)

Prepared: 01/25/2022 Analyzed: 01/28/2022

Diesel (C10-C28)	1170	50.0	mg/kg	1000		117	70-130			
Residual Range Organics (C28-C40)	967	200	"	1000		96.7	70-130			
Surrogate: o-Terphenyl	56		"	49.8		113	50-150			

Origins Laboratory, Inc.

The results in this report apply to the samples analyzed in accordance with the chain of custody document. This analytical report must be reproduced in its entirety.

Eagle Environmental Consulting, Inc.

8000 W 44th Ave

Wheat Ridge CO 80033

Martin C Eckert III

Project Number: -

Project: Bonanza - Kunesmiller 5-61-20_19 NW21

Extractable Petroleum Hydrocarbons by 8015D - Quality Control

Origins Laboratory, Inc.

Analyte	Result	Reporting Limit	Units	Spike Level	Source Result	%REC	%REC Limits	RPD	RPD Limit	Notes
---------	--------	-----------------	-------	-------------	---------------	------	-------------	-----	-----------	-------

Batch B2A2501 - EPA 3580

Matrix Spike (B2A2501-MS1)		Source: Y201415-01			Prepared: 01/25/2022 Analyzed: 01/28/2022					
Diesel (C10-C28)	1150	50.0	mg/kg	1000	ND	115	70-130			
Residual Range Organics (C28-C40)	972	200	"	1000	ND	97.2	70-130			
Surrogate: o-Terphenyl	51		"	49.8		102	50-150			

Origins Laboratory, Inc.

The results in this report apply to the samples analyzed in accordance with the chain of custody document. This analytical report must be reproduced in its entirety.

Eagle Environmental Consulting, Inc.

8000 W 44th Ave

Wheat Ridge CO 80033

Martin C Eckert III

Project Number: -

Project: Bonanza - Kunesmiller 5-61-20_19 NW21

Extractable Petroleum Hydrocarbons by 8015D - Quality Control

Origins Laboratory, Inc.

Analyte	Result	Reporting Limit	Units	Spike Level	Source Result	%REC	%REC Limits	RPD	RPD Limit	Notes
---------	--------	-----------------	-------	-------------	---------------	------	-------------	-----	-----------	-------

Batch B2A2501 - EPA 3580

Matrix Spike Dup (B2A2501-MSD1)		Source: Y201415-01			Prepared: 01/25/2022 Analyzed: 01/28/2022					
Diesel (C10-C28)	1110	50.0	mg/kg	1000	ND	111	70-130	3.39	35	
Residual Range Organics (C28-C40)	961	200	"	1000	ND	96.1	70-130	1.18	35	
Surrogate: o-Terphenyl	50		"	49.8		101	50-150			

Origins Laboratory, Inc.



The results in this report apply to the samples analyzed in accordance with the chain of custody document. This analytical report must be reproduced in its entirety.

Eagle Environmental Consulting, Inc.
8000 W 44th Ave
Wheat Ridge CO 80033

Martin C Eckert III
Project Number: -
Project: Bonanza - Kunesmiller 5-61-20_19 NW21

Extractable Petroleum Hydrocarbons by 8015D - Quality Control

Origins Laboratory, Inc.

Analyte	Result	Reporting Limit	Units	Spike Level	Source Result	%REC	%REC Limits	RPD	RPD Limit	Notes
Batch B2A2626 - EPA 5030 (soil)										
Blank (B2A2626-BLK1)					Prepared: 01/26/2022 Analyzed: 02/03/2022					
1,2,4-Trimethylbenzene	ND	0.00200	mg/kg							U
1,3,5-Trimethylbenzene	ND	0.00200	"							U
Benzene	ND	0.00200	"							U
Ethylbenzene	ND	0.00200	"							U
Naphthalene	ND	0.0100	"							U
Toluene	ND	0.00200	"							U
Xylenes, total	ND	0.00200	"							U
Gasoline Range Hydrocarbons	ND	0.200	"							U
Surrogate: 1,2-Dichloroethane-d4	0.14		"	0.125		111	70-130			
Surrogate: Toluene-d8	0.13		"	0.125		105	70-130			
Surrogate: 4-Bromofluorobenzene	0.12		"	0.125		97.5	70-130			

Origins Laboratory, Inc.



The results in this report apply to the samples analyzed in accordance with the chain of custody document. This analytical report must be reproduced in its entirety.

Eagle Environmental Consulting, Inc.
8000 W 44th Ave
Wheat Ridge CO 80033

Martin C Eckert III
Project Number: -
Project: Bonanza - Kunesmiller 5-61-20_19 NW21

Volatile Organic Compounds by GC/MS SW846 8260D - Quality Control
Origins Laboratory, Inc.

Analyte	Result	Reporting Limit	Units	Spike Level	Source Result	%REC	%REC Limits	RPD	RPD Limit	Notes
Batch B2A2626 - EPA 5030 (soil)										
LCS (B2A2626-BS1)					Prepared: 01/26/2022 Analyzed: 02/03/2022					
1,2,4-Trimethylbenzene	0.0982	0.00200	mg/kg	0.100		98.2	70-130			
1,3,5-Trimethylbenzene	0.0920	0.00200	"	0.100		92.0	70-130			
Benzene	0.0934	0.00200	"	0.100		93.4	70-130			
Ethylbenzene	0.0937	0.00200	"	0.100		93.7	70-130			
Naphthalene	0.0997	0.0100	"	0.100		99.7	70-130			
Toluene	0.104	0.00200	"	0.100		104	70-130			
o-Xylene	0.0940	0.00200	"	0.100		94.0	70-130			
m,p-Xylene	0.180	0.00400	"	0.200		89.8	70-130			
Surrogate: 1,2-Dichloroethane-d4	0.14		"	0.125		111	70-130			
Surrogate: Toluene-d8	0.13		"	0.125		100	70-130			
Surrogate: 4-Bromofluorobenzene	0.12		"	0.125		97.2	70-130			

Origins Laboratory, Inc.



The results in this report apply to the samples analyzed in accordance with the chain of custody document. This analytical report must be reproduced in its entirety.

Eagle Environmental Consulting, Inc.
8000 W 44th Ave
Wheat Ridge CO 80033

Martin C Eckert III
Project Number: -
Project: Bonanza - Kunesmiller 5-61-20_19 NW21

Volatile Organic Compounds by GC/MS SW846 8260D - Quality Control
Origins Laboratory, Inc.

Analyte	Result	Reporting Limit	Units	Spike Level	Source Result	%REC	%REC Limits	RPD	RPD Limit	Notes
Batch B2A2626 - EPA 5030 (soil)										
Matrix Spike (B2A2626-MS1)		Source: Y201415-01			Prepared: 01/26/2022 Analyzed: 02/04/2022					
1,2,4-Trimethylbenzene	0.0501	0.00200	mg/kg	0.100	ND	50.1	70-130			QM-07
1,3,5-Trimethylbenzene	0.0987	0.00200	"	0.100	ND	98.7	70-130			
Benzene	0.0755	0.00200	"	0.100	ND	75.5	70-130			
Ethylbenzene	0.0945	0.00200	"	0.100	ND	94.5	70-130			
Naphthalene	0.0790	0.0100	"	0.100	ND	79.0	70-130			
Toluene	0.0875	0.00200	"	0.100	ND	87.5	70-130			
o-Xylene	0.0978	0.00200	"	0.100	ND	97.8	70-130			
m,p-Xylene	0.151	0.00400	"	0.200	ND	75.5	70-130			
Surrogate: 1,2-Dichloroethane-d4	0.12		"	0.125		99.4	70-130			
Surrogate: Toluene-d8	0.14		"	0.125		109	70-130			
Surrogate: 4-Bromofluorobenzene	0.13		"	0.125		102	70-130			

Origins Laboratory, Inc.



The results in this report apply to the samples analyzed in accordance with the chain of custody document. This analytical report must be reproduced in its entirety.

Eagle Environmental Consulting, Inc.
8000 W 44th Ave
Wheat Ridge CO 80033

Martin C Eckert III
Project Number: -
Project: Bonanza - Kunesmiller 5-61-20_19 NW21

Volatile Organic Compounds by GC/MS SW846 8260D - Quality Control
Origins Laboratory, Inc.

Analyte	Result	Reporting Limit	Units	Spike Level	Source Result	%REC	%REC Limits	RPD	RPD Limit	Notes
Batch B2A2626 - EPA 5030 (soil)										
Matrix Spike Dup (B2A2626-MSD1)			Source: Y201415-01		Prepared: 01/26/2022 Analyzed: 02/04/2022					
1,2,4-Trimethylbenzene	0.0738	0.00200	mg/kg	0.100	ND	73.8	70-130	38.2	20	QM-07
1,3,5-Trimethylbenzene	0.0910	0.00200	"	0.100	ND	91.0	70-130	8.09	20	
Benzene	0.0708	0.00200	"	0.100	ND	70.8	70-130	6.51	20	
Ethylbenzene	0.0860	0.00200	"	0.100	ND	86.0	70-130	9.46	20	
Naphthalene	0.0832	0.0100	"	0.100	ND	83.2	70-130	5.20	20	
Toluene	0.0822	0.00200	"	0.100	ND	82.2	70-130	6.27	20	
o-Xylene	0.0905	0.00200	"	0.100	ND	90.5	70-130	7.77	20	
m,p-Xylene	0.165	0.00400	"	0.200	ND	82.4	70-130	8.65	20	
Surrogate: 1,2-Dichloroethane-d4	0.13		"	0.125		100	70-130			
Surrogate: Toluene-d8	0.13		"	0.125		108	70-130			
Surrogate: 4-Bromofluorobenzene	0.13		"	0.125		101	70-130			

Origins Laboratory, Inc.



The results in this report apply to the samples analyzed in accordance with the chain of custody document. This analytical report must be reproduced in its entirety.

Eagle Environmental Consulting, Inc.
8000 W 44th Ave
Wheat Ridge CO 80033

Martin C Eckert III
Project Number: -
Project: Bonanza - Kunesmiller 5-61-20_19 NW21

Volatile Organic Compounds by GC/MS SW846 8260D - Quality Control

Origins Laboratory, Inc.

Analyte	Result	Reporting Limit	Units	Spike Level	Source Result	%REC	%REC Limits	RPD	RPD Limit	Notes
---------	--------	-----------------	-------	-------------	---------------	------	-------------	-----	-----------	-------

Saturated Paste - Quality Control

Origins Laboratory, Inc.

Analyte	Result	Reporting Limit	Units	Spike Level	Source Result	%REC	%REC Limits	RPD	RPD Limit	Notes
---------	--------	-----------------	-------	-------------	---------------	------	-------------	-----	-----------	-------

Batch B2A2505 - NO PREP

Duplicate (B2A2505-DUP1)		Source: Y201424-04		Prepared: 01/25/2022 Analyzed: 01/26/2022						
pH	7.99		pH Units		8.08			1.12	25	

Batch B2A2506 - NO PREP

Blank (B2A2506-BLK1)		Prepared: 01/25/2022 Analyzed: 01/26/2022								
Specific Conductance (EC)	0.00110	0.00500	mmhos/cm							
Duplicate (B2A2506-DUP1)		Source: Y201424-04		Prepared: 01/25/2022 Analyzed: 01/26/2022						
Specific Conductance (EC)	0.533	0.00500	mmhos/cm		0.592			10.3	25	

Batch B2A2604 - NO PREP

Blank (B2A2604-BLK1)		Prepared: 01/26/2022 Analyzed: 01/27/2022								
Specific Conductance (EC)	0.000800	0.00500	mmhos/cm							
Duplicate (B2A2604-DUP1)		Source: Y201432-02		Prepared: 01/26/2022 Analyzed: 01/27/2022						
Specific Conductance (EC)	3.32	0.00500	mmhos/cm		3.32			0.0964	25	

Batch B2A2605 - NO PREP

Duplicate (B2A2605-DUP1)		Source: Y201432-02		Prepared: 01/26/2022 Analyzed: 01/27/2022						
pH	7.48		pH Units		7.62			1.85	25	

Origins Laboratory, Inc.



The results in this report apply to the samples analyzed in accordance with the chain of custody document. This analytical report must be reproduced in its entirety.

Eagle Environmental Consulting, Inc.
8000 W 44th Ave
Wheat Ridge CO 80033

Martin C Eckert III
Project Number: -
Project: Bonanza - Kunesmiller 5-61-20_19 NW21

PAH by 8270D SIM - Quality Control
Waypoint Analytical, Inc.

Analyte	Result	Reporting Limit	Units	Spike Level	Source Result	%REC	%REC Limits	RPD	RPD Limit	Notes
---------	--------	-----------------	-------	-------------	---------------	------	-------------	-----	-----------	-------

Batch L596558 - 3550B

MSD (L 99694-MSD-L596558)		Source: 99694			Prepared: 01/27/2022 Analyzed: 01/28/2022					
Fluoranthene	0.104	0.00197	mg/Kg	0.166	0.0163	52.8	30-130	29.5	30	
Fluorene	0.188	0.00143	"	0.166	0.0787	65.8	30-130	30.2	30	
Pyrene	0.115	0.00322	"	0.166	0.0154	60	30-130	21	30	
Naphthalene	0.143	0.00242	"	0.166	0.0507	55.6	30-130	26.1	30	
1-Methylnaphthalene	0.805	0.00182	"	0.166	0.562	146	30-130	45.5	30	*
Acenaphthene	0.153	0.00152	"	0.166	0.0615	55.1	30-130	28	30	
Indeno(1,2,3-cd)pyrene	0.0589	0.00314	"	0.166	99694	35.4	30-130	2.4	30	
Anthracene	0.0955	0.00167	"	0.166	0.00683	53.4	30-130	16.7	30	
Benzo(a)anthracene	0.101	0.00247	"	0.166	0.00273	60.8	30-130	15.5	30	
Benzo(a)pyrene	0.107	0.00234	"	0.166	0.00501	61.4	30-130	8.9	30	
Benzo(b)fluoranthene	0.064	0.00293	"	0.166	0.00487	35.6	30-130	28	30	
Benzo(k)fluoranthene	0.0597	0.00219	"	0.166	99694	35.9	30-130	32.7	30	
Chrysene	0.0999	0.00312	"	0.166	0.00608	56.5	30-130	21.5	30	
Dibenz(a,h)anthracene	0.0666	0.00307	"	0.166	99694	40.1	30-130	3.6	30	
2-Methylnaphthalene	1.07	0.00323	"	0.166	0.73	205	30-130	26.7	30	*
Surrogate: Nitrobenzene-d5	65.5		"	0.331	200	65.5	29-110			
Surrogate: 2-Fluorobiphenyl	58.6		"	0.331	186	58.6	33-115			
Surrogate: 4-Terphenyl-d14	69.7		"	0.331	210	69.7	33-122			

MS (L 99694-MS-L596558)		Source: 99694			Prepared: 01/27/2022 Analyzed: 01/28/2022					
1-Methylnaphthalene	1.28	0.00182	mg/Kg	0.164	0.489	438	30-130			*
Pyrene	0.142	0.00322	"	0.164	0.017	77.1	30-130			
Naphthalene	0.186	0.00242	"	0.164	0.0344	82.5	30-130			
Indeno(1,2,3-cd)pyrene	0.0575	0.00314	"	0.164	99694	35	30-130			
Fluorene	0.255	0.00143	"	0.164	0.0642	108	30-130			
Fluoranthene	0.14	0.00197	"	0.164	0.00752	75.4	30-130			
Dibenz(a,h)anthracene	0.0691	0.00307	"	0.164	99694	42.1	30-130			

Origins Laboratory, Inc.

The results in this report apply to the samples analyzed in accordance with the chain of custody document. This analytical report must be reproduced in its entirety.

Eagle Environmental Consulting, Inc.
8000 W 44th Ave
Wheat Ridge CO 80033

Martin C Eckert III
Project Number: -
Project: Bonanza - Kunesmiller 5-61-20_19 NW21

PAH by 8270D SIM - Quality Control
Waypoint Analytical, Inc.

Analyte	Result	Reporting Limit	Units	Spike Level	Source Result	%REC	%REC Limits	RPD	RPD Limit	Notes
---------	--------	-----------------	-------	-------------	---------------	------	-------------	-----	-----------	-------

Batch L596558 - 3550B

MS (L 99694-MS-L596558)		Source: 99694			Prepared: 01/27/2022 Analyzed: 01/28/2022					
Chrysene	0.124	0.00312	mg/Kg	0.164	0.00706	71.9	30-130			
Benzo(k)fluoranthene	0.0831	0.00219	"	0.164	0.00234	50.6	30-130			
Benzo(b)fluoranthene	0.0849	0.00293	"	0.164	0.00765	48.7	30-130			
Benzo(a)pyrene	0.117	0.00234	"	0.164	0.00638	68.2	30-130			
Benzo(a)anthracene	0.118	0.00247	"	0.164	0.00512	71.9	30-130			
Anthracene	0.113	0.00167	"	0.164	0.00564	64.7	30-130			
Acenaphthene	0.203	0.00152	"	0.164	0.0446	86.2	30-130			
2-Methylnaphthalene	1.4	0.00323	"	0.164	0.574	409	30-130			*
Surrogate: Nitrobenzene-d5	81.1		"	0.329	200	81.1	29-110			
Surrogate: 4-Terphenyl-d14	83.5		"	0.329	210	83.5	33-122			
Surrogate: 2-Fluorobiphenyl	71.1		"	0.329	186	71.1	33-115			

LCS (LCS-L596558)		Prepared: 01/27/2022 Analyzed: 01/28/2022								
Benzo(a)pyrene	0.124	0.000468	mg/Kg	0.167		74.2	30-130			
Dibenz(a,h)anthracene	0.104	0.000614	"	0.167		62.2	30-130			
2-Methylnaphthalene	0.0946	0.000645	"	0.167		56.6	30-130			
Acenaphthene	0.0923	0.000304	"	0.167		55.2	30-130			
Benzo(a)anthracene	0.118	0.000493	"	0.167		70.6	30-130			
1-Methylnaphthalene	0.093	0.000364	"	0.167		55.6	30-130			
Anthracene	0.1	0.000334	"	0.167		59.8	30-130			
Benzo(b)fluoranthene	0.108	0.000585	"	0.167		64.6	30-130			
Fluoranthene	0.114	0.000394	"	0.167		68.2	30-130			
Fluorene	0.102	0.000286	"	0.167		61	30-130			
Indeno(1,2,3-cd)pyrene	0.0885	0.000627	"	0.167		52.9	30-130			
Naphthalene	0.094	0.000484	"	0.167		56.2	30-130			
Pyrene	0.113	0.000643	"	0.167		67.6	30-130			
Benzo(k)fluoranthene	0.104	0.000437	"	0.167		62.2	30-130			

Origins Laboratory, Inc.

The results in this report apply to the samples analyzed in accordance with the chain of custody document. This analytical report must be reproduced in its entirety.

Eagle Environmental Consulting, Inc.
8000 W 44th Ave
Wheat Ridge CO 80033

Martin C Eckert III
Project Number: -
Project: Bonanza - Kunesmiller 5-61-20_19 NW21

PAH by 8270D SIM - Quality Control
Waypoint Analytical, Inc.

Analyte	Result	Reporting Limit	Units	Spike Level	Source Result	%REC	%REC Limits	RPD	RPD Limit	Notes
---------	--------	-----------------	-------	-------------	---------------	------	-------------	-----	-----------	-------

Batch L596558 - 3550B

LCS (LCS-L596558)

Prepared: 01/27/2022 Analyzed: 01/28/2022

Chrysene	0.117	0.000624	mg/Kg	0.167		70	30-130			
Surrogate: 2-Fluorobiphenyl	58.2		"	0.333		58.2	33-115			
Surrogate: 4-Terphenyl-d14	70.2		"	0.333		70.2	33-122			
Surrogate: Nitrobenzene-d5	59.7		"	0.333		59.7	29-110			

LRB (LRB-L596558)

Prepared: 01/27/2022 Analyzed: 01/28/2022

Fluorene	ND	0.00067	mg/Kg				-			
Benzo(k)fluoranthene	ND	0.00067	"				-			
Chrysene	ND	0.00067	"				-			
Dibenz(a,h)anthracene	ND	0.00067	"				-			
Benzo(a)pyrene	ND	0.00067	"				-			
1-Methylnaphthalene	ND	0.00067	"				-			
Benzo(a)anthracene	ND	0.00067	"				-			
Anthracene	ND	0.00067	"				-			
Acenaphthene	ND	0.00067	"				-			
Benzo(b)fluoranthene	ND	0.00067	"				-			
Fluoranthene	ND	0.00067	"				-			
Indeno(1,2,3-cd)pyrene	ND	0.00067	"				-			
Naphthalene	ND	0.00067	"				-			
Pyrene	ND	0.00067	"				-			
2-Methylnaphthalene	ND	0.00067	"				-			
Surrogate: 4-Terphenyl-d14	66.6		"	0.333		66.6	33-122			
Surrogate: 2-Fluorobiphenyl	57		"	0.333		57	33-115			
Surrogate: Nitrobenzene-d5	54.6		"	0.333		54.6	29-110			

Origins Laboratory, Inc.

The results in this report apply to the samples analyzed in accordance with the chain of custody document. This analytical report must be reproduced in its entirety.

Eagle Environmental Consulting, Inc.
8000 W 44th Ave
Wheat Ridge CO 80033

Martin C Eckert III
Project Number: -
Project: Bonanza - Kunesmiller 5-61-20_19 NW21

Total Metals by 6020B - Quality Control Waypoint Analytical, Inc.

Analyte	Result	Reporting Limit	Units	Spike Level	Source Result	%REC	%REC Limits	RPD	RPD Limit	Notes
Batch L596446 - 3050B										
MSD (L 99759-MSD-L596446)			Source: 99759		Prepared: 01/26/2022 Analyzed: 01/28/2022					
Arsenic	3.77	0.0855	mg/Kg	2.34	1.72	88	75-125	9.7	80	
Barium	31.5	0.042	"	4.67	24.1	158	75-125	13.9	80	*
Cadmium	0.494	0.0259	"	0.467	0.0581	106	75-125	4.5	80	
Copper	5.9	0.0806	"	2.34	3.05	122	75-125	12.6	80	
Lead	8.26	0.031	"	2.34	5.09	136	75-125	14.9	80	*
Zinc	45.7	0.534	"	23.4	20.3	109	75-125	9.6	80	
Nickel	8.86	0.0633	"	2.34	5.48	145	75-125	14.1	80	*
Selenium	3.67	0.103	"	4.67	0.266	73	75-125	2.4	80	*
Silver	0.428	0.0067	"	0.467	0.0118	92	75-125	1.8	80	
MS (L 99759-MS-L596446)			Source: 99759		Prepared: 01/26/2022 Analyzed: 01/28/2022					
Zinc	41.5	0.534	mg/Kg	24.5	20.3	86	75-125			
Silver	0.436	0.0067	"	0.49	0.0118	89	75-125			
Selenium	3.76	0.103	"	4.9	0.266	71	75-125			*
Lead	7.11	0.031	"	2.45	5.09	82	75-125			
Copper	5.2	0.0806	"	2.45	3.05	88	75-125			
Cadmium	0.472	0.0259	"	0.49	0.0581	96	75-125			
Barium	27.4	0.042	"	4.9	24.1	67	75-125			*
Arsenic	3.42	0.0855	"	2.45	1.72	69	75-125			*
Nickel	7.69	0.0633	"	2.45	5.48	90	75-125			
LCS (LCS-L596446)			Prepared: 01/26/2022 Analyzed: 01/28/2022							
Barium	5.03	0.042	mg/Kg	5		101	80-120			
Cadmium	0.471	0.0259	"	0.5		94	80-120			
Selenium	4.63	0.103	"	5		93	80-120			
Silver	0.482	0.0067	"	0.5		96	80-120			
Zinc	23.7	0.534	"	25		95	80-120			

Origins Laboratory, Inc.

The results in this report apply to the samples analyzed in accordance with the chain of custody document. This analytical report must be reproduced in its entirety.

Eagle Environmental Consulting, Inc.
8000 W 44th Ave
Wheat Ridge CO 80033

Martin C Eckert III
Project Number: -
Project: Bonanza - Kunesmiller 5-61-20_19 NW21

Total Metals by 6020B - Quality Control
Waypoint Analytical, Inc.

Analyte	Result	Reporting Limit	Units	Spike Level	Source Result	%REC	%REC Limits	RPD	RPD Limit	Notes
---------	--------	-----------------	-------	-------------	---------------	------	-------------	-----	-----------	-------

Batch L596446 - 3050B

LCS (LCS-L596446)

Prepared: 01/26/2022 Analyzed: 01/28/2022

Copper	2.38	0.0806	mg/Kg	2.5		95	80-120			
Nickel	2.49	0.0633	"	2.5		100	80-120			
Arsenic	2.39	0.0855	"	2.5		96	80-120			
Lead	2.46	0.031	"	2.5		98	80-120			

LRB (LRB-L596446)

Prepared: 01/26/2022 Analyzed: 01/28/2022

Barium	ND	0.25	mg/Kg				-			
Arsenic	ND	0.25	"				-			
Silver	ND	0.25	"				-			
Cadmium	ND	0.25	"				-			
Copper	ND	0.25	"				-			
Lead	ND	0.25	"				-			
Nickel	ND	0.25	"				-			
Selenium	ND	0.25	"				-			
Zinc	ND	2.5	"				-			

Origins Laboratory, Inc.



The results in this report apply to the samples analyzed in accordance with the chain of custody document. This analytical report must be reproduced in its entirety.

Eagle Environmental Consulting, Inc.
8000 W 44th Ave
Wheat Ridge CO 80033

Martin C Eckert III
Project Number: -
Project: Bonanza - Kunesmiller 5-61-20_19 NW21

Total Metals by 7196A - Quality Control
Waypoint Analytical, Inc.

Analyte	Result	Reporting Limit	Units	Spike Level	Source Result	%REC	%REC Limits	RPD	RPD Limit	Notes
Batch L597269 -										
DUP (L 99702-DUP)		Source: 99702			Prepared: Analyzed: 02/01/2022					
Chromium, Hexavalent	ND	0.246	mg/Kg		99702	-		0	20	
MS (L 99702-MS)		Source: 99702			Prepared: Analyzed: 02/01/2022					
Chromium, Hexavalent	5.7	0.244	mg/Kg	7.87	99702	72	75-125			*
LCS (LCS)					Prepared: Analyzed: 02/01/2022					
Chromium, Hexavalent	6.41	0.244	mg/Kg	8		80	75-125			
LRB (LRB)					Prepared: Analyzed: 02/01/2022					
Chromium, Hexavalent	ND	0.5	mg/Kg							

Origins Laboratory, Inc.



The results in this report apply to the samples analyzed in accordance with the chain of custody document. This analytical report must be reproduced in its entirety.

Eagle Environmental Consulting, Inc.

8000 W 44th Ave

Wheat Ridge CO 80033

Martin C Eckert III

Project Number: -

Project: Bonanza - Kunesmiller 5-61-20_19 NW21

Notes and Definitions

U Sample is Non-Detect.

QM-07 The spike recovery was outside acceptance limits for the MS and/or MSD. The batch was accepted based on acceptable LCS recovery.

J Estimated Value. Analyte below reported quantitation limit.

* QC Failure

ND Analyte NOT DETECTED at or above the reporting limit

RPD Relative Percent Difference

All soil results are reported at a wet weight basis.

Origins Laboratory, Inc.



The results in this report apply to the samples analyzed in accordance with the chain of custody document. This analytical report must be reproduced in its entirety.



February 15, 2022

Eagle Environmental Consulting, Inc.

Martin C Eckert III

8000 W 44th Ave

Wheat Ridge CO 80033

Project Name - Bonanza - Kunesmiller 5-61-20_19 NW21 **Project Number - -**

Attached are your analytical results for Bonanza - Kunesmiller 5-61-20_19 NW21 received by Origins Laboratory, Inc. February 07, 2022. This project is associated with Origins project number Y202114-01.

The analytical results in the following report were analyzed under the guidelines of EPA Methods. These methods are identified as follows; "SW" are defined in SW-846, "EPA" are defined in 40CFR part 136 and "SM" are defined in the most current revision of Standard Methods For the Examination of Water and Wastewater.

The analytical results apply specifically to the samples and analyses specified per the attached Chain of Custody. As such, this report shall not be reproduced except in full, without the written approval of Origin's laboratory.

Unless otherwise noted, the analytical results for all soil samples are reported on a wet weight basis. All analytical analyses were performed under NELAP guidelines unless noted by a data qualifier.

Any holding time exceedances, deviations from the method specifications or deviations from Origins Laboratory's Standard Operating Procedures are outlined in the case narrative.

Thank you for selecting Origins for your analytical needs. Please contact us with any questions concerning this report, or if we can help with anything at all.

Origins Laboratory, Inc.
303.433.1322
o-squad@oelabinc.com



1725 Elk Place, Denver, CO 80211 | Phone: 303.433.1322 | Fax: 303.265.9645

Eagle Environmental Consulting, Inc.

8000 W 44th Ave

Wheat Ridge CO 80033

Martin C Eckert III

Project Number: -

Project: Bonanza - Kunesmiller 5-61-20_19 NW21

CROSS REFERENCE REPORT

Sample ID	Laboratory ID	Matrix	Date Sampled	Date Received
Background-01@0.5'	Y202114-01	Soil	January 24, 2022 14:58	02/07/2022 14:48

Origins Laboratory, Inc.



The results in this report apply to the samples analyzed in accordance with the chain of custody document. This analytical report must be reproduced in its entirety.

Martin C Eckert III
Project Number: -
Project: Bonanza - Kunesmiller 5-61-20_19 NW21

[illegible]

Origins Laboratory, Inc.

Menlo

The results in this report apply to the samples analyzed in accordance with the chain of custody document. This analytical report must be reproduced in its entirety.

Eagle Environmental Consulting, Inc.
8000 W 44th Ave
Wheat Ridge CO 80033

Martin C Eckert III
Project Number: -
Project: Bonanza - Kunesmiller 5-61-20_19 NW21

Origins Laboratory

F-012207-01-R1
Effective Date: 01/09/12

Sample Receipt Checklist

Origins Work Order: PO2114 Client: Eagle
Client Project ID: Kunesmiller 5-61-20-19

Checklist Completed by: dh Shipped Via: HD
(UPS, FedEx, Hand Delivered, Pick-up, etc.)
Date/time completed: 2/7/22 Airbill #: NA

Matrix(s) Received: (Check all that apply): ☒ Soil/Solid ☐ Water ☐ Other: _____
(Describe)

Cooler Number/Temperature: 1 10.3 °C 1 °C 1 °C 1 °C
Thermometer ID: 1103

Requirement Description	Yes	No	N/A	Comments (if any)
If samples require cooling, was the temperature between 0°C to ≤ 6°C ⁽¹⁾ ?	<input checked="" type="checkbox"/>	<input type="checkbox"/>	<input type="checkbox"/>	
Is there ice present (document if blue ice is used)	<input checked="" type="checkbox"/>	<input type="checkbox"/>	<input type="checkbox"/>	
Are custody seals present on cooler? (if so, document in comments if they are signed and dated, broken or intact)	<input type="checkbox"/>	<input checked="" type="checkbox"/>	<input type="checkbox"/>	
Are custody seals present on each sample container? (if so, document in comments if they are signed and dated, broken or intact)	<input type="checkbox"/>	<input checked="" type="checkbox"/>	<input type="checkbox"/>	
Were all samples received intact ⁽¹⁾ ?	<input checked="" type="checkbox"/>	<input type="checkbox"/>	<input type="checkbox"/>	
Was adequate sample volume provided ⁽¹⁾ ?	<input checked="" type="checkbox"/>	<input type="checkbox"/>	<input type="checkbox"/>	
Are short holding time analytes or samples with HTs due within 48 hours present ⁽¹⁾ ?	<input type="checkbox"/>	<input checked="" type="checkbox"/>	<input type="checkbox"/>	
Is a chain-of-custody (COC) present and filled out completely ⁽¹⁾ ?	<input checked="" type="checkbox"/>	<input type="checkbox"/>	<input type="checkbox"/>	
Does the COC agree with the number and type of sample bottles received ⁽¹⁾ ?	<input checked="" type="checkbox"/>	<input type="checkbox"/>	<input type="checkbox"/>	
Do the sample IDs on the bottle labels match the COC ⁽¹⁾ ?	<input checked="" type="checkbox"/>	<input type="checkbox"/>	<input type="checkbox"/>	
Is the COC properly relinquished by the client with date and time recorded ⁽¹⁾ ?	<input checked="" type="checkbox"/>	<input type="checkbox"/>	<input type="checkbox"/>	
For volatiles in water – is there headspace (> ¼ inch bubble) present? If yes, contact client and note in narrative.	<input type="checkbox"/>	<input type="checkbox"/>	<input checked="" type="checkbox"/>	
Are samples preserved that require preservation and was it checked ⁽¹⁾ ? (note ID of confirmation instrument used in comments) / (preservation is not confirmed for subcontracted analyses in order to insure sample integrity) (pH < 2 for samples preserved with HNO ₃ , HCL, H ₂ SO ₄) / (pH > 10 for samples preserved with NaAsO ₂ +NaOH, ZnAc+NaOH)	<input type="checkbox"/>	<input type="checkbox"/>	<input checked="" type="checkbox"/>	
Additional Comments (if any):				

⁽¹⁾ If NO, then contact the client before proceeding with analysis and note date/time and person contacted as well as the corrective action to in the additional comments (above) and the case narrative.

Reviewed by (Project Manager) Jm Date/Time Reviewed 2-8-22

Origins Laboratory, Inc.

The results in this report apply to the samples analyzed in accordance with the chain of custody document. This analytical report must be reproduced in its entirety.

Eagle Environmental Consulting, Inc.
8000 W 44th Ave
Wheat Ridge CO 80033

Martin C Eckert III
Project Number: -
Project: Bonanza - Kunesmiller 5-61-20_19 NW21

Background-01@0.5'**1/24/2022 2:58:00PM**

Analyte	Result	Min Detection Limit	Reporting Limit	Units	Dilution	Batch	Prepared	Analyzed	Notes
---------	--------	---------------------	-----------------	-------	----------	-------	----------	----------	-------

Origins Laboratory, Inc.
Y202114-01 (Soil)**Boron (DTPA Sorbitol)**

Boron	3.24	0.100	mg/L	1	B2B0725	02/07/2022	02/09/2022
-------	------	-------	------	---	---------	------------	------------

Metals by Saturated Paste by EPA 6010

Calcium	11.2	0.499	meq/L	10	[CALC]	02/08/2022	02/09/2022
Magnesium	3.53	0.823	"	"	"	"	"
Sodium	58.4	0.435	"	"	"	"	"

SAR by 20B Saturated Paste

SAR	21.5		SAR	1	B2B0802	"	"
-----	------	--	-----	---	---------	---	---

Specific Conductance Mod. 9050A

Specific Conductance (EC)	7.80	0.00500	mmhos/cm	1	B2B0807	02/08/2022	02/09/2022
---------------------------	------	---------	----------	---	---------	------------	------------

Total Metals by 6020B

Arsenic	1.61	0.0855	0.25	mg/Kg	5	L598378	02/09/2022	02/14/2022
---------	------	--------	------	-------	---	---------	------------	------------

Origins Laboratory, Inc.



The results in this report apply to the samples analyzed in accordance with the chain of custody document. This analytical report must be reproduced in its entirety.

Eagle Environmental Consulting, Inc.
8000 W 44th Ave
Wheat Ridge CO 80033

Martin C Eckert III
Project Number: -
Project: Bonanza - Kunesmiller 5-61-20_19 NW21

Saturated Paste - Quality Control
Origins Laboratory, Inc.

Analyte	Result	Reporting Limit	Units	Spike Level	Source Result	%REC	%REC Limits	RPD	RPD Limit	Notes
Batch B2B0807 - NO PREP										
Blank (B2B0807-BLK1)					Prepared: 02/08/2022 Analyzed: 02/09/2022					
Specific Conductance (EC)	0.00100	0.00500	mmhos/cm							
Duplicate (B2B0807-DUP1)					Source: Y202085-04 Prepared: 02/08/2022 Analyzed: 02/09/2022					
Specific Conductance (EC)	1.82	0.00500	mmhos/cm		2.02			10.4	25	

Origins Laboratory, Inc.



The results in this report apply to the samples analyzed in accordance with the chain of custody document. This analytical report must be reproduced in its entirety.

Eagle Environmental Consulting, Inc.
8000 W 44th Ave
Wheat Ridge CO 80033

Martin C Eckert III
Project Number: -
Project: Bonanza - Kunesmiller 5-61-20_19 NW21

Total Metals by 6020B - Quality Control Waypoint Analytical, LLC.

Analyte	Result	Reporting Limit	Units	Spike Level	Source Result	%REC	%REC Limits	RPD	RPD Limit	Notes
Batch L598378 - 3050B										
MSD (L 99150-MSD-L598378)			Source: 99150			Prepared: 02/09/2022 Analyzed: 02/14/2022				
Arsenic	8.83	0.0855	mg/Kg	2.48	4.44	177	75-125	18.2	80	*
MS (L 99150-MS-L598378)			Source: 99150			Prepared: 02/09/2022 Analyzed: 02/14/2022				
Arsenic	7.35	0.0855	mg/Kg	2.37	4.44	123	75-125			
LCS (LCS-L598378)						Prepared: 02/09/2022 Analyzed: 02/14/2022				
Arsenic	2.62	0.0855	mg/Kg	2.5		105	80-120			
LRB (LRB-L598378)						Prepared: 02/09/2022 Analyzed: 02/14/2022				
Arsenic	ND	0.25	mg/Kg							

Origins Laboratory, Inc.



The results in this report apply to the samples analyzed in accordance with the chain of custody document. This analytical report must be reproduced in its entirety.

Eagle Environmental Consulting, Inc.

8000 W 44th Ave

Wheat Ridge CO 80033

Martin C Eckert III

Project Number: -

Project: Bonanza - Kunesmiller 5-61-20_19 NW21

Notes and Definitions

* QC Failure

ND Analyte NOT DETECTED at or above the reporting limit

RPD Relative Percent Difference

All soil results are reported on a wet weight basis.

Origins Laboratory, Inc.



The results in this report apply to the samples analyzed in accordance with the chain of custody document. This analytical report must be reproduced in its entirety.