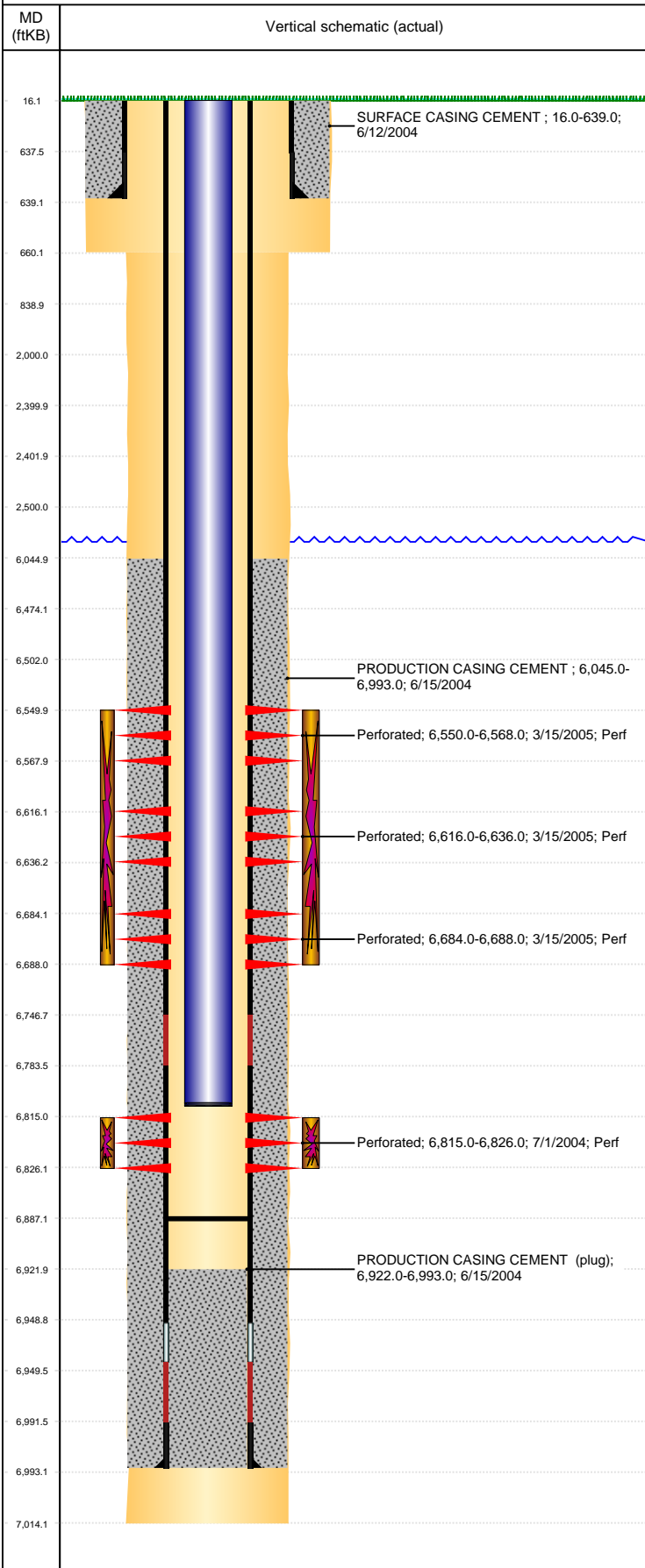


**Well Name: GUTTERSEN STATE CC32-13**

VERTICAL, ORIGINAL HOLE, 3/7/2022 4:48:35 PM



**Well Header**

API 05-123-22175	Business Unit DJ BASIN	District 15	Well Config VERTICAL
KB - GL / MSL (ft...) 16.00	Spud Date 6/11/2004	P & A Date	Well Production Status PR
SoRT No			

Comment

**Surface Location (Congressional)**

Qtr 3 SW	Qtr 4 SW	Section 32	Twnshp 4	Twnsh... N	Range 63	Rng E... W	Actual Latitude (°) 40.26360910	Actual Longitude (°) -104.46870218
-------------	-------------	---------------	-------------	---------------	-------------	---------------	------------------------------------	---------------------------------------

**Wellbore Sections**

Section Des	Size (in)	Act Top, MD (ftKB)	Act Btm, MD (ftKB)
SURFACE	12 1/4	16	660
PRODUCTION	7 7/8	660	7,014

**Casing Strings**

Csg Des	Run Date	OD (in)	Wt/Len (lb/ft)	Grade	Top, MD (ftKB)	MD (ftKB)
Surface	6/12/2004	8 5/8	24.00	J-55	16.0	639.0
Production	6/15/2004	4 1/2	11.60	M-80	16.0	6,993.0

**Cement**

Des	Start Date	Top (ftKB)	Btm (ftKB)
SURFACE CASING CEMENT	6/12/2004	16.0	639.0
PRODUCTION CASING CEMENT	6/15/2004	6,045.0	6,993.0

**Zone Statuses**

Zone Name	Status Date	Status	Fluid Type	Job	Prod Method
NIOBRARA	4/25/2005	PR		RECOMPLETION, 3/14/2005 00:00	
NIOBRARA	6/3/2009	PR			Flowing
CODELL	6/3/2009	PR			Flowing
CODELL	7/15/2017	PR			

**Perforation Data**

Linked Zone	Bnch/Stg	Entered Shot Total	Top (ftKB)	Btm (ftKB)	Date
NIOBRARA, ORIGINAL HOLE	A	108	6,550.00	6,568.00	3/15/2005
NIOBRARA, ORIGINAL HOLE	B	120	6,616.00	6,636.00	3/15/2005
NIOBRARA, ORIGINAL HOLE	C	24	6,684.00	6,688.00	3/15/2005
CODELL, ORIGINAL HOLE		44	6,815.00	6,826.00	7/1/2004

**Stimulation Intervals**

Zone	Start Date	Top (ftKB)	Btm (ftKB)
NIOBRARA, ORIGINAL HOLE	3/23/2005	6,550.0	6,688.0
CODELL, ORIGINAL HOLE	7/9/2004	6,815.0	6,826.0

**Other In Hole**

Run Date	Des	Make	OD (in)	Top (ftKB)	Btm (ftKB)

**Logs**

Date	Type	Top, MD (ftKB)	Btm, MD (ftKB)
6/15/2004	COMPENSATED DENSITY	4,100.0	7,005.0
6/15/2004	INDUCTION	639.0	7,005.0
6/30/2004	CBL/CCL/GR	5,830.0	6,919.0
1/10/2014	GYRO	0.0	6,750.0

**Plug Back Total Depths**

Date	Type	Com	Depth (ftKB)
6/30/2004	FILL	DEPTH LOGGER FROM CBL	6,922.0
4/27/2005	FILL	C/O AND LAND TBG	6,887.0