

Company: Occidental Petroleum

Well: Morton 37-1

Field: Wattenberg

County: Weld State: Colorado

Isolation Scanner
VDL Wide
Gamma Ray - CCL

County: Weld
Field: Wattenberg
Location:
Well: Morton 37-1
Company: Occidental Petroleum

Location:		Elev.:	K.B.	4913.00 ft
Permanent Datum:	Ground Level		G.L.	4898.00 ft
Log Measured From:	Kelly Bushing	15.00 ft	D.F.	
Drilling Measured From:	Kelly Bushing			above Perm.Datum
API Serial No.	Section:	Township:	Range:	
05-123-34061	1	1N	67W	

Logging Date	28-Oct-2021
Run Number	One
Depth Driller	8243.00 ft
Schlumberger Depth	6609.00 ft
Bottom Log Interval	6609.00 ft
Top Log Interval	300.00 ft
Casing Fluid Type	Water
Salinity	
Density	9 lbn/gal
Fluid Level	8.00 ft
BIT/CASING/TUBING STRING	
Bit Size	7.88 in
From	878.00 ft
To	6609.00 ft
Casing/Tubing Size	4.5 in
Weight	11.6 lbn/ft
Grade	N/A
From	0.00 ft
To	8243.00 ft
Max Recorded Temperatures	189 degF
Logger on Bottom	28-Oct-2021 08:53:00
Unit Number	9108
Recorded By	M.Oloyede/T.Mozena Fort Morgan
Witnessed By	David Almaraz

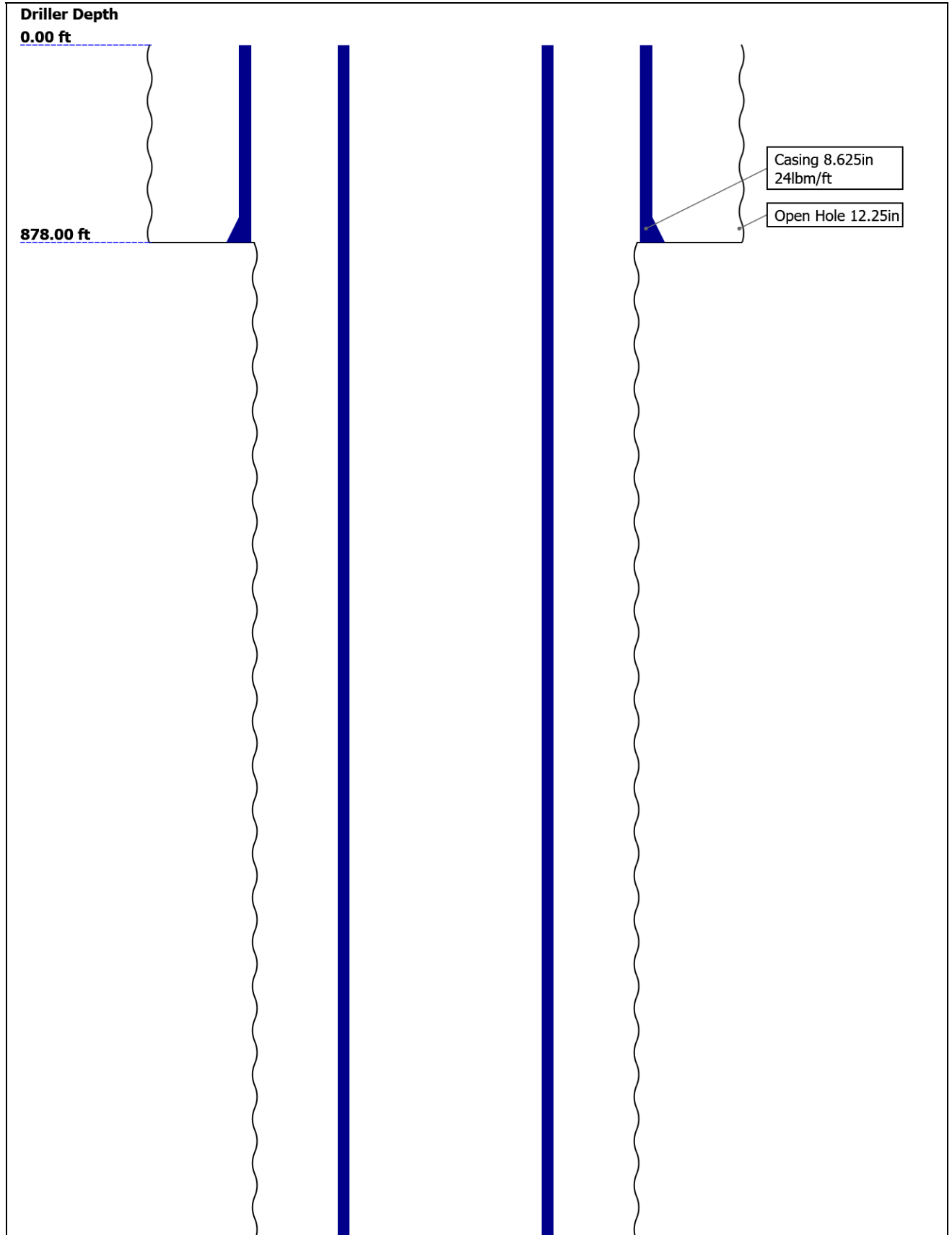
Disclaimer

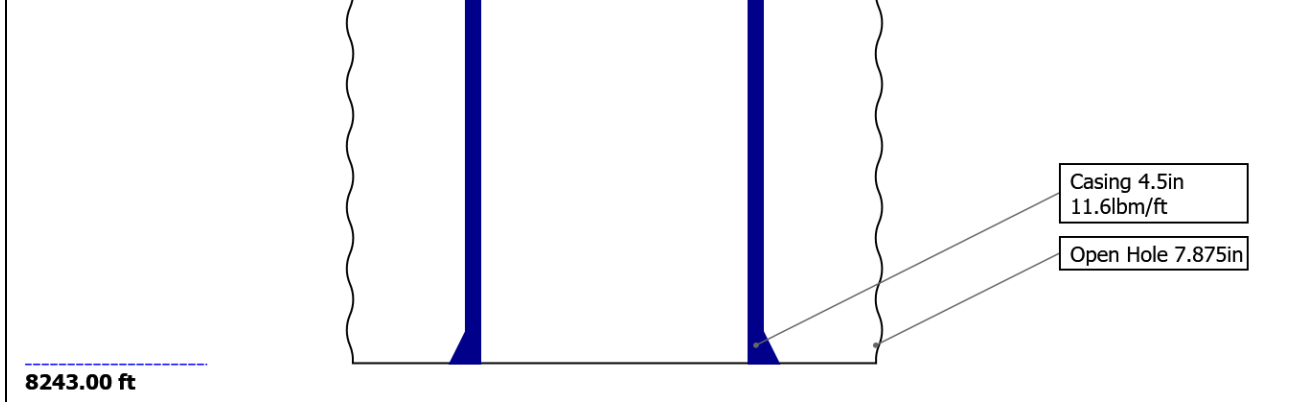
THE USE OF AND RELIANCE UPON THIS RECORDED-DATA BY THE HEREIN NAMED COMPANY (AND ANY OF ITS AFFILIATES, PARTNERS, REPRESENTATIVES, AGENTS, CONSULTANTS AND EMPLOYEES) IS SUBJECT TO THE TERMS AND CONDITIONS AGREED UPON BETWEEN SCHLUMBERGER AND THE COMPANY, INCLUDING: (a) RESTRICTIONS ON USE OF THE RECORDED-DATA; (b) DISCLAIMERS AND WAIVERS OF WARRANTIES AND REPRESENTATIONS REGARDING COMPANY'S USE AND RELIANCE UPON THE RECORDED-DATA; AND (c) CUSTOMER'S FULL AND SOLE RESPONSIBILITY FOR ANY INFERENCE DRAWN OR DECISION MADE IN CONNECTION WITH THE USE OF THIS RECORDED-DATA.

Contents

1. Header
2. Disclaimer
3. Contents
4. Well Sketch
5. Borehole Size/Casing/Tubing Record
6. Remarks and Equipment Summary
7. Depth Summary
8. IBC Fluid Properties Measurement
9. One IBC VDL WIDE
 - 9.1 Integration Summary
 - 9.2 Composite Summary
 - 9.3 Log (IBC VDL WIDE)
10. One IBC VDL Wide
 - 10.1 Integration Summary
 - 10.2 Composite Summary
 - 10.3 Log (IBC VDL WIDE)
11. Tail

Well Sketch





Borehole Size/Casing/Tubing Record

Bit					
Bit Size (in)	12.25	7.875			
Top Driller (ft)	0	878			
Top Logger (ft) (ft)	0	878			
Bottom Driller (ft)	878	8243			
Bottom Logger (ft)	878	6609			
Casing					
Size (in)	8.625	4.5			
Weight (lbm/ft)	24	11.6			
Inner Diameter (in)	8.097	4			
Grade	N/A	N/A			
Top Driller (ft)	0	0			
Top Logger (ft)	0	0			
Bottom Driller (ft)	878	8243			
Bottom Logger (ft)	878	8243			

Remarks and Equipment Summary

One: Toolstring		One: Remarks
Equip name&length LEH-QT 54.87 LEH-QT	MP nameOffset CTEM 47.88 ACCZ 0.00 HV 0.00 Gamma Ray 46.01 TelStat 44.88	Tool was run as per tool sketch All logging intervals as per client request All passes recorded at 10 deg 6 inch resolution Main pass recorded at 500 PSI, surfaced induced Repeat pass recorded at 0 PSI
EDTC-B: 51.38 9301 EDTH-B: 8442 EDTG-A EDTC-B: 9301		
AH-184 44.88 [2]		
CME-AF 42.88 [2]:3308		
ASLT-B: 39.08 8073 ASI T-BR		



CME-AF 24.43
[1]

AH-107 20.64
:3897

AH-184 18.64
[1]

USIT-E:9 16.64
00

ECH-MFA
:1818
USAC-A:
900
USIS-A:9
02
USSC-B
IBCS-A:8
15
FAR-SEN
SOR:4775
IBC-TX
NEAR-SE
NSOR:48
25
IBC-TX
USI-SEN
SOR:4522
IBC-TX
EMITTER
-SENSOR
:4776
IBC-TX

USI Se 0.84
nsor
Head T
ension

TOOL_ZERO

Lengths are in ft
Maximum Outer Diameter = 3.800 in
Line: Sensor Location, Value: Gating Offset
All measurements are relative to TOOL_ZERO

Depth Summary

	One		
Depth Measuring Device			
Type	IDW-B		
Serial Number	5744		

Calibration Date	22-Sep-2021		
Calibrator Serial Number	57		
Calibration Cable Type	7-46A-XS		
Wheel Correction 1	-9		
Wheel Correction 2	-7		

Tension Device			
Type	CMTD-B/A		
Serial Number			
Calibration Date			
Calibrator Serial Number			
Number of Calibration Points	0		

Logging Cable			
Type	7-46A-XS		
Serial Number	1234		
Length	30000.00 ft		
Conveyance Type	Wireline		
Rig Type			

One:Depth Control Parameters		Depth Control Remarks	
Log Sequence	First Log In the Well	Schlumberger depth control procedures followed	
Rig Up Length At Surface		IDW used as primary depth control system	
Rig Up Length At Bottom		Z-Chart used as secondary depth control system	
Rig Up Length Correction			
Stretch Correction			
Tool Zero Check At Surface			

USIT - Fluid Properties Measurement

Run Name	Pass Name	Start Depth(ft)	Stop Depth(ft)
Run 1	Log[6]:Up	6610.38	32.35

Fluid Velocity = "Automatic".
CFVL equals DFSL channel

Start Depth(ft)	Stop Depth(ft)	Start Value(us/ft)	End Value(us/ft)
-----------------	----------------	--------------------	------------------

Mud Impedance = "Theoretical".
CZMD uses theoretical results.
MUD_N_THE=1.05
DFD=1.08g/cm3(9.00lbm/gal)

Start Depth(ft)	Stop Depth(ft)	Start Value(Mrayl)	End Value(Mrayl)
-----------------	----------------	--------------------	------------------

One

IBC VDL WIDE

Pass Summary

Run Name	Pass Objective	Direction	Top	Bottom	Start	Stop	DSC Mode	Depth Shift	Include Parallel Data
One	Log[6]:Up	Up	32.35 ft	6610.38 ft	28-Oct-2021 8:53:21 AM	28-Oct-2021 10:46:06 AM	ON	9.11 ft	Yes

All depths are referenced to toolstring zero

Log Company:Occidental Petroleum Well:Morton 37-1
One: Log[6]:Up:S007

Description: USI IBC VDL WIDE Format: Log (IBC VDL WIDE) Index Scale: 2 in per 100 ft Index Unit: ft Index Type: Measured Depth Creation Date: 28-Oct-2021 18:56:18

TIME: 1900 - Time Marked every 60.00 (s)

Gamma Ray
(ECGR_EDT
C) EDTC-B

0 gAPI 150

Casing Collar
Locator
Ultrasonic
(CCLU)
USIT-E

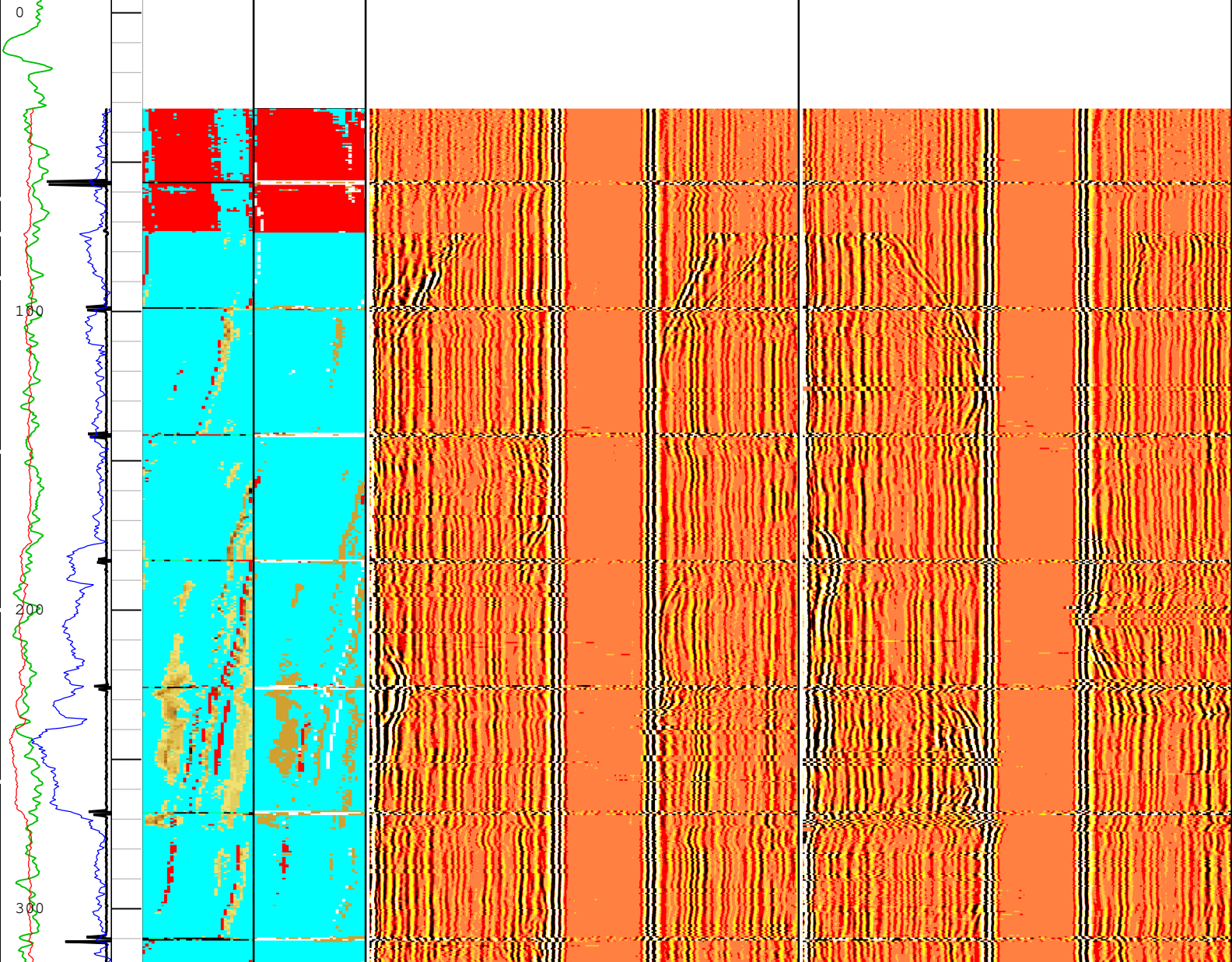
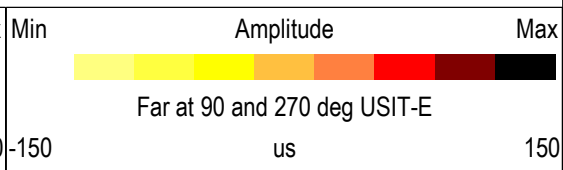
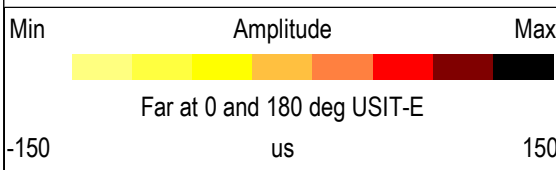
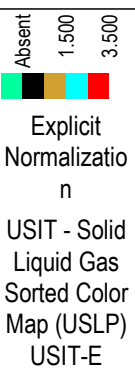
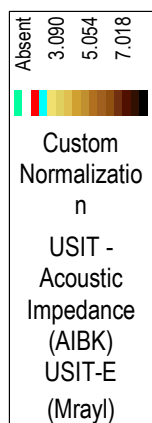
-19 in 1

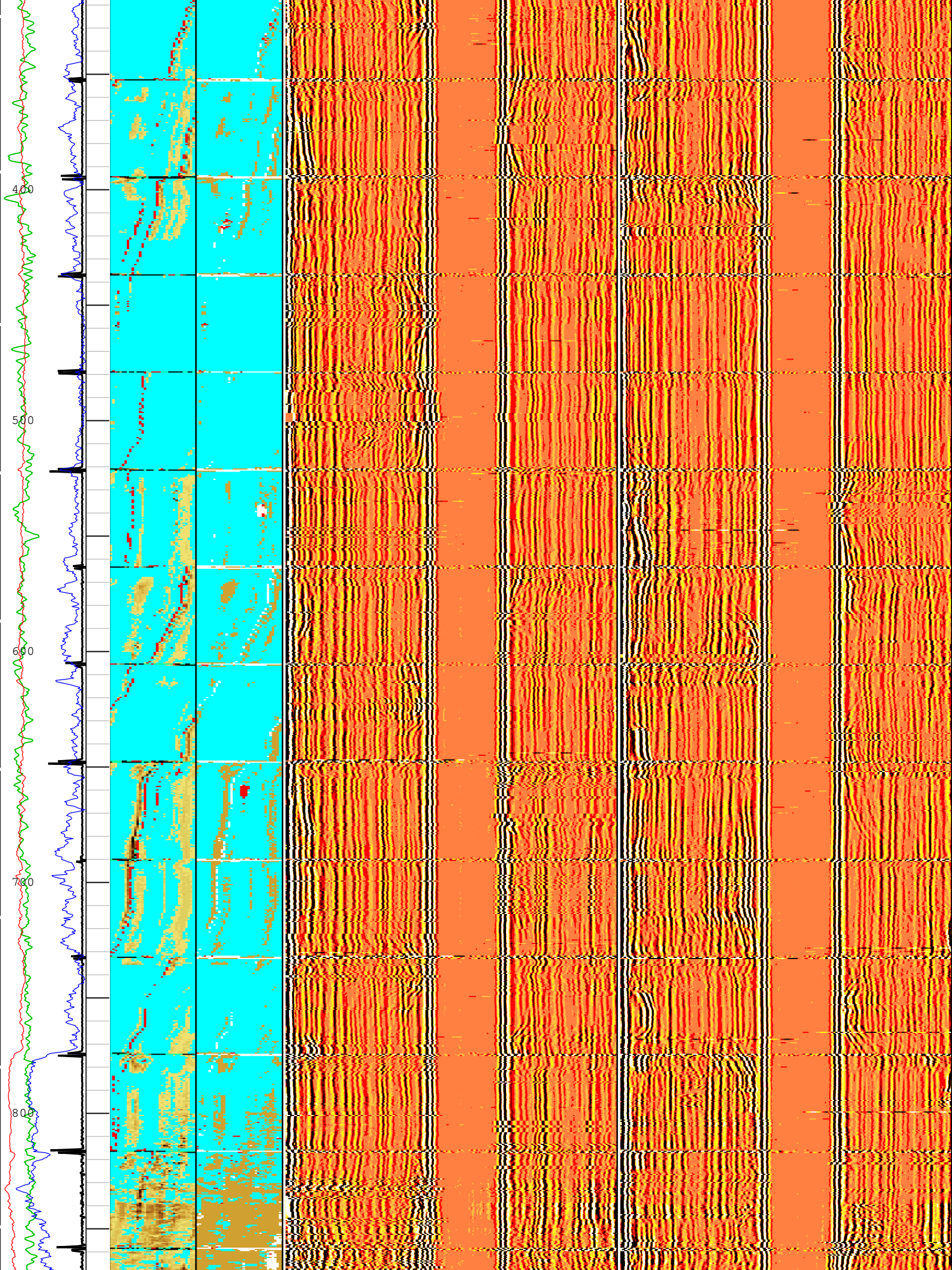
Annulus
Thickness
Minimum
(UATN)
USIT-E

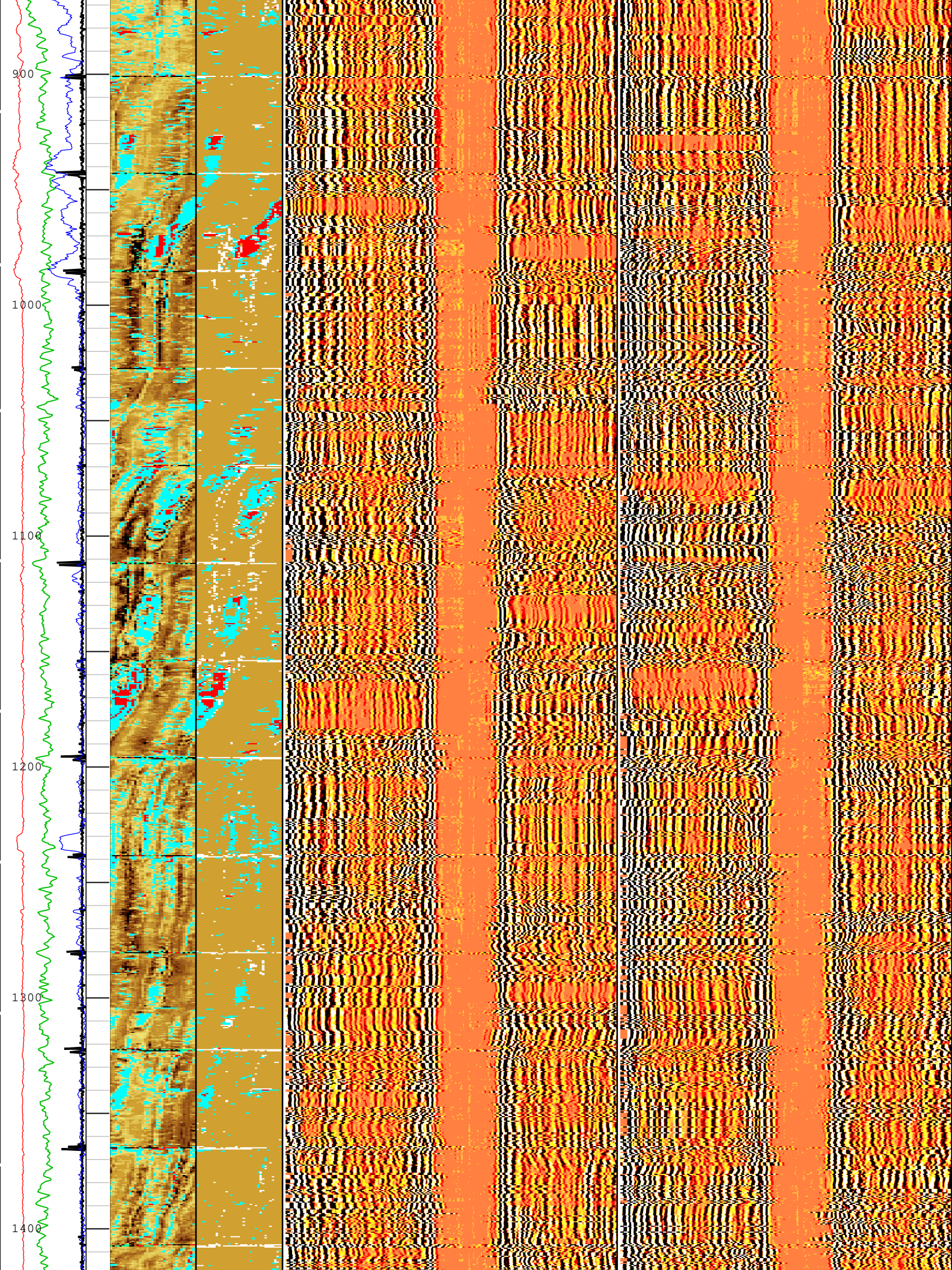
0 ft 0.5

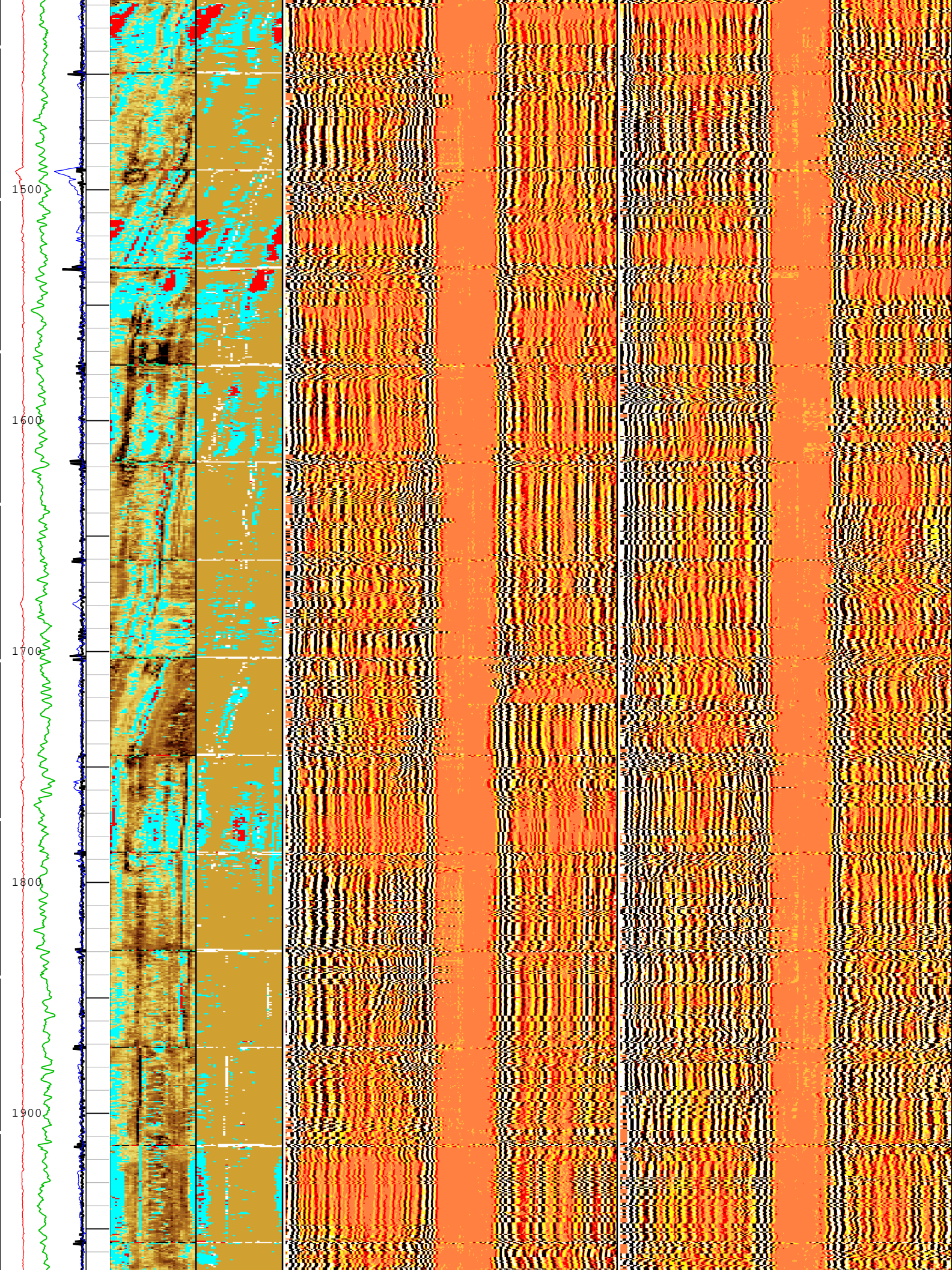
Casing
Centering
Percentage
(U-USIT_UC
CP) USIT-E

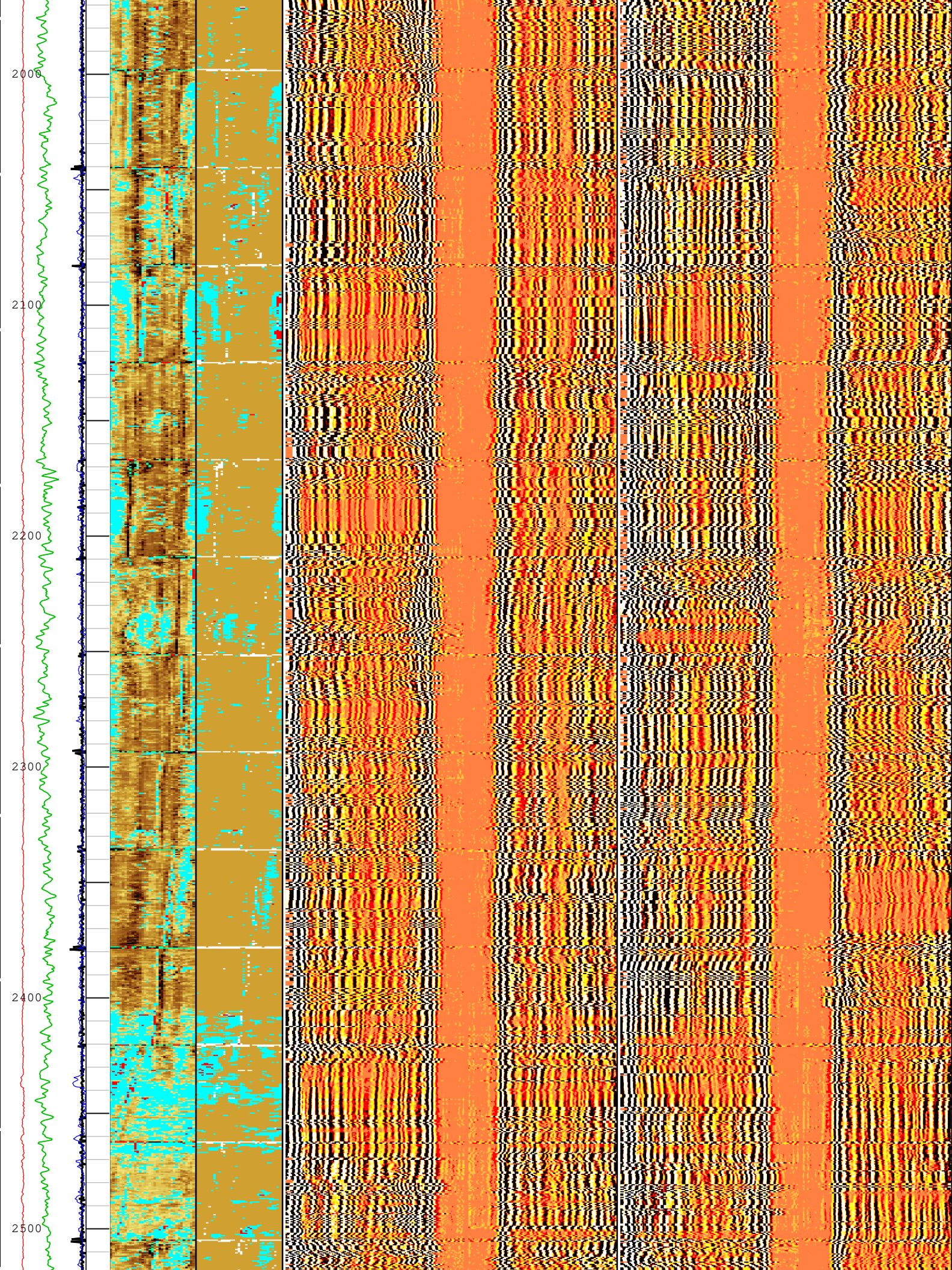
0 % 100

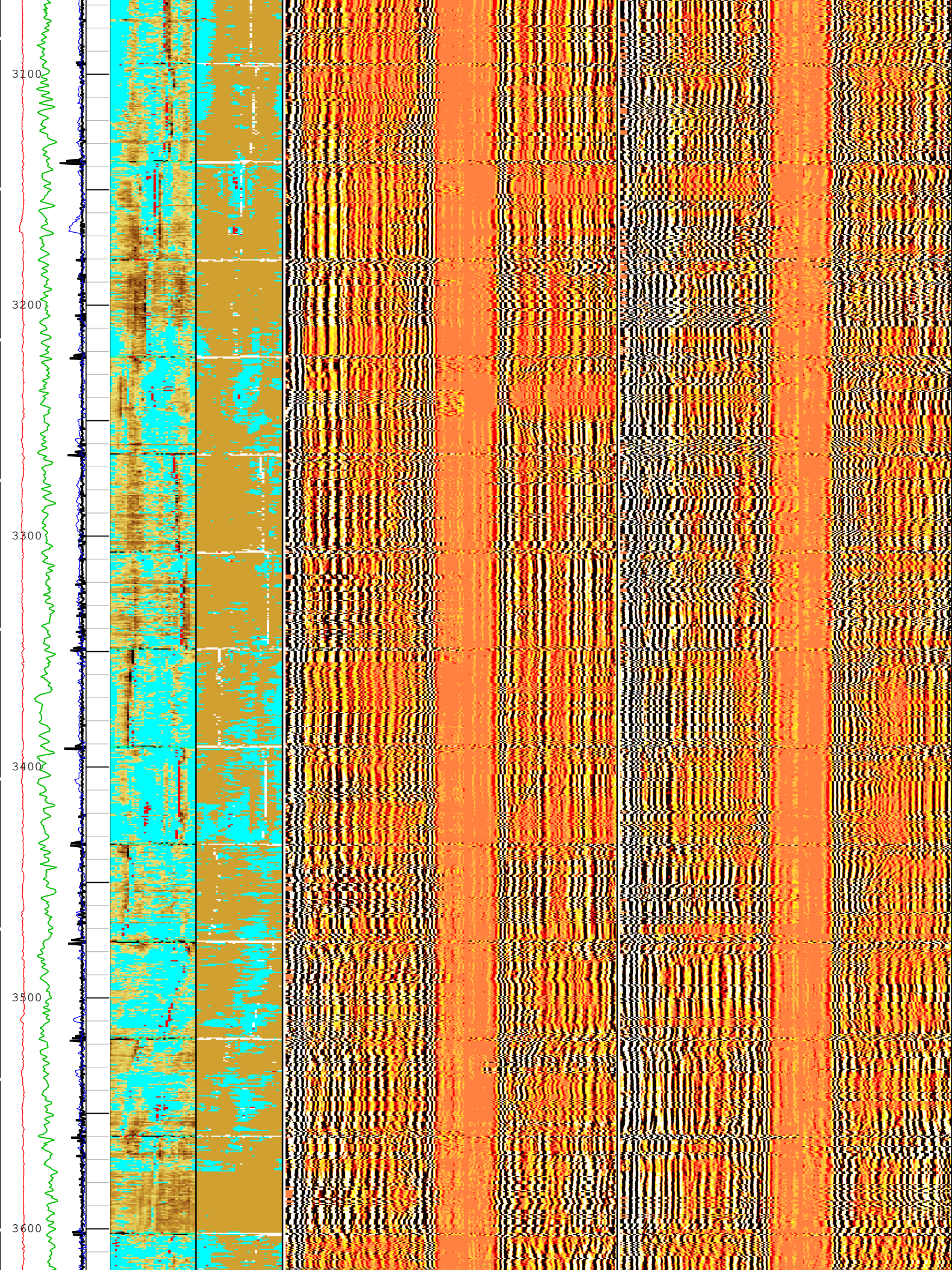


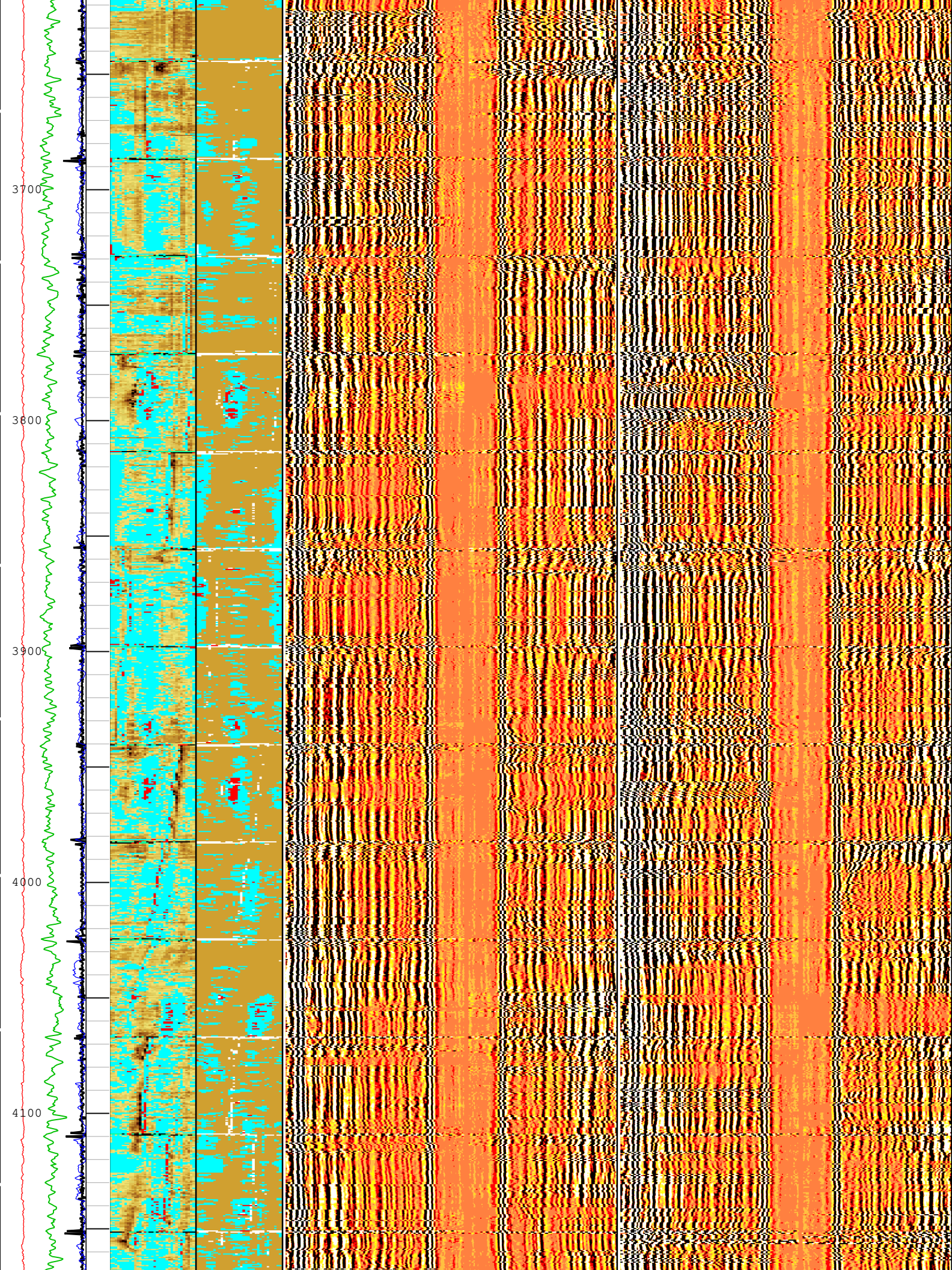


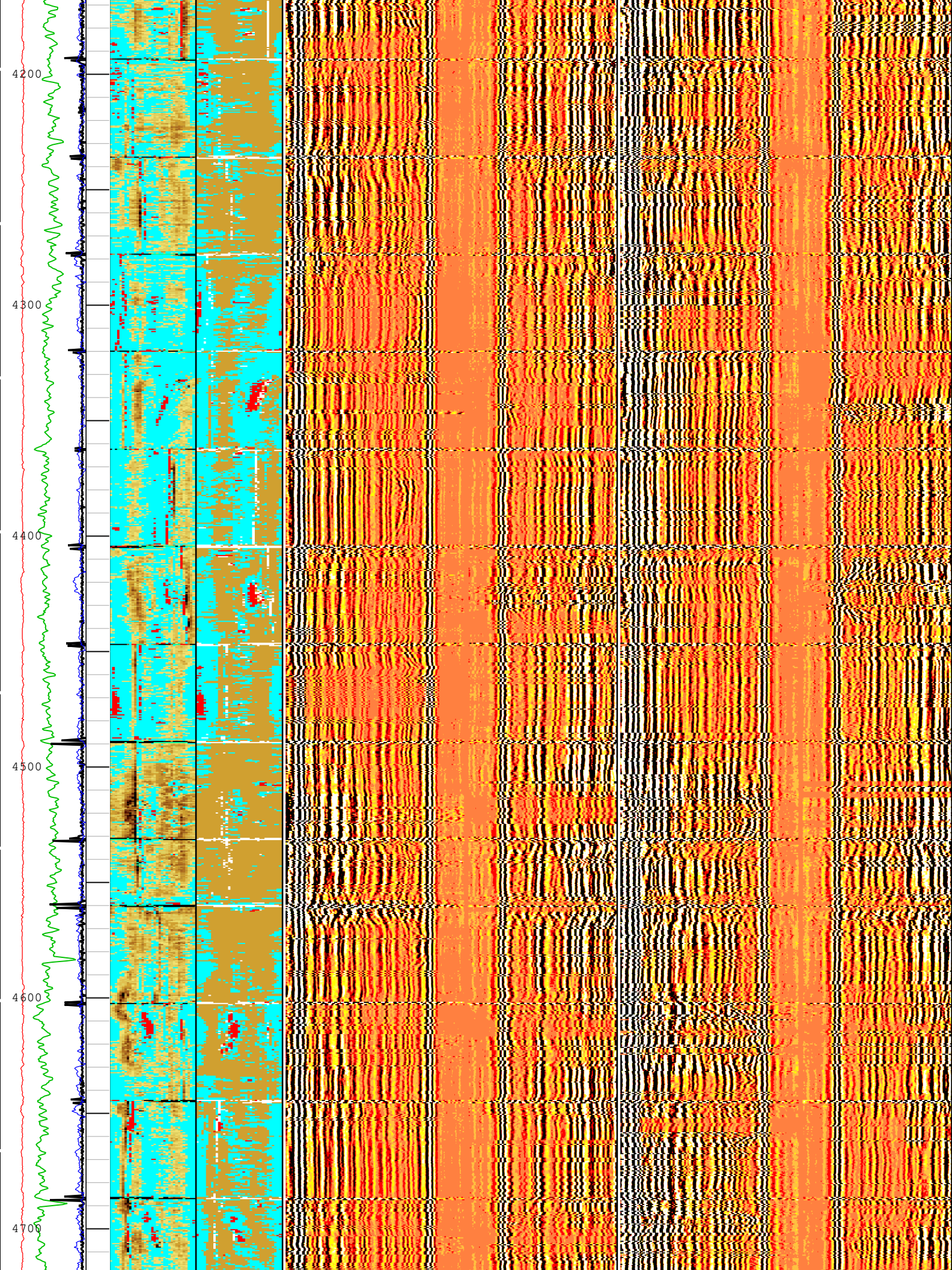


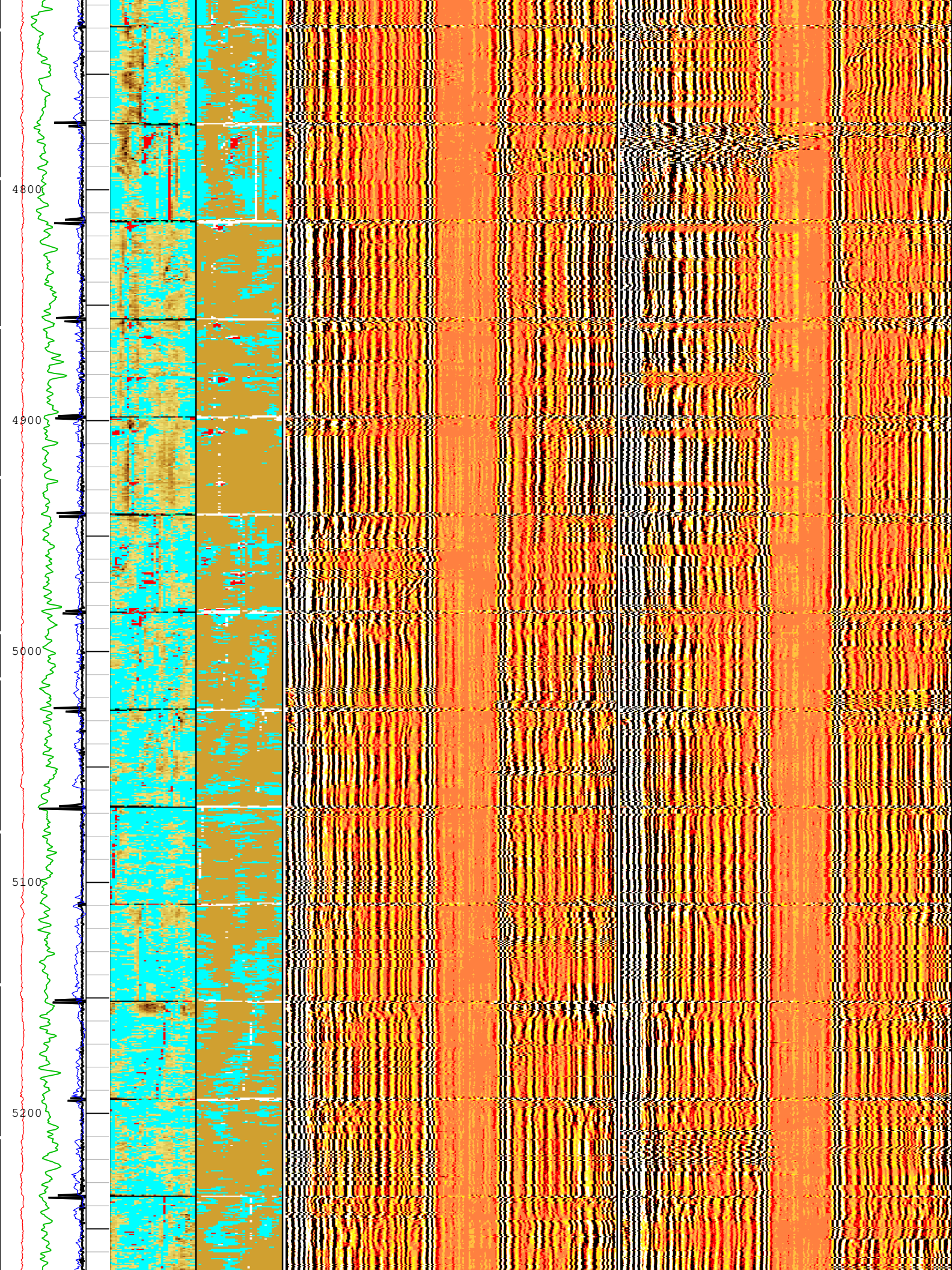


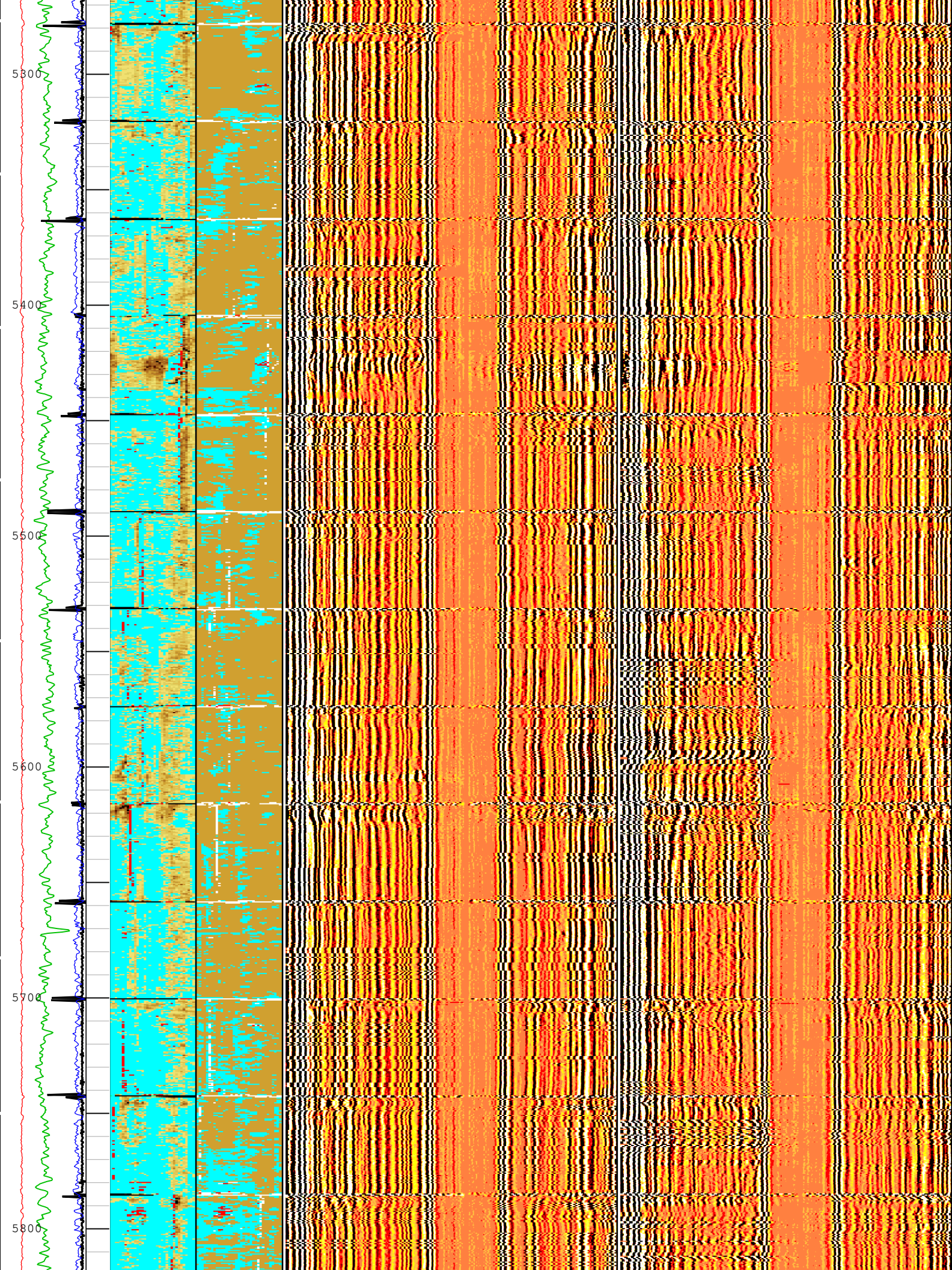


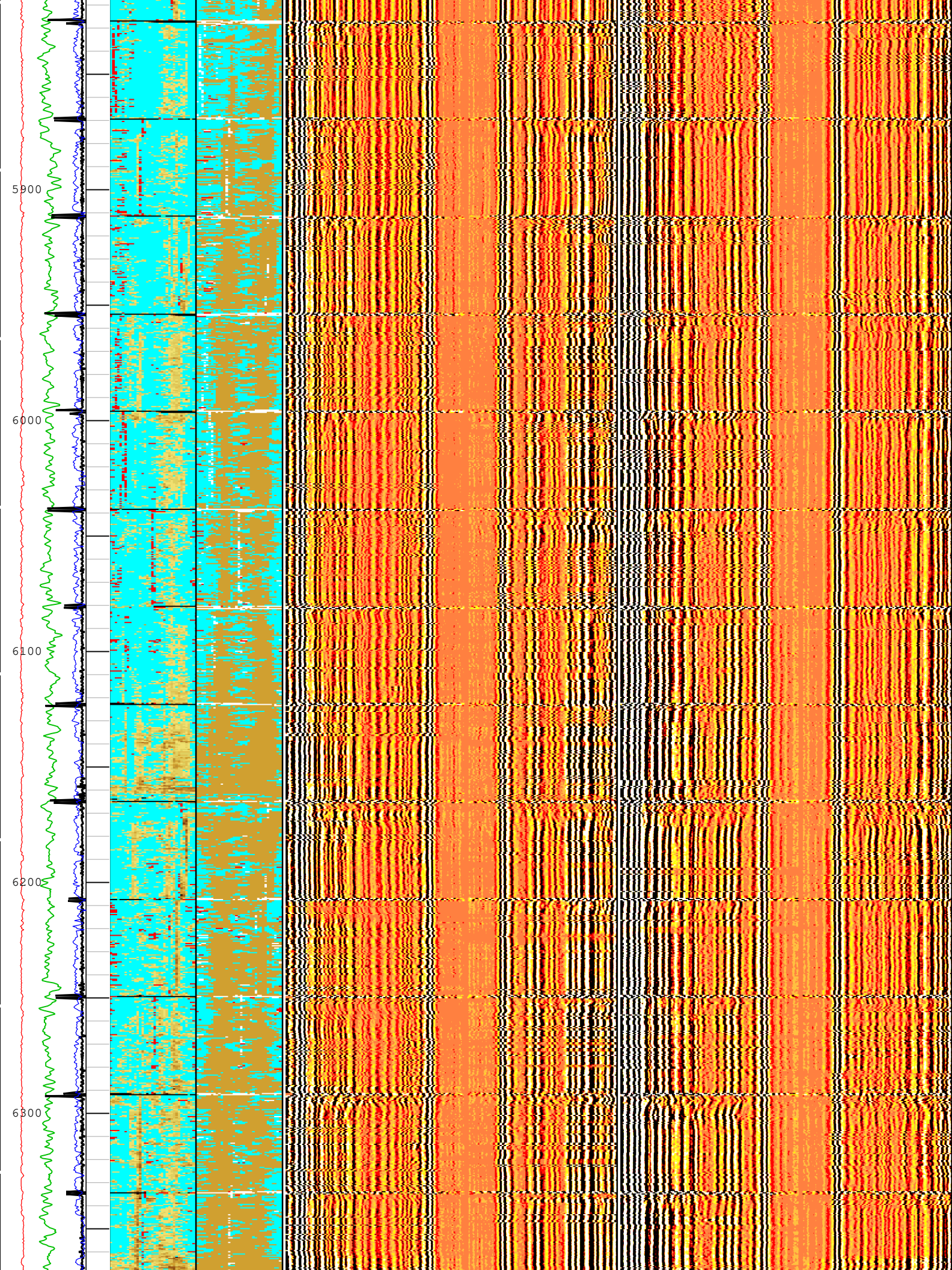












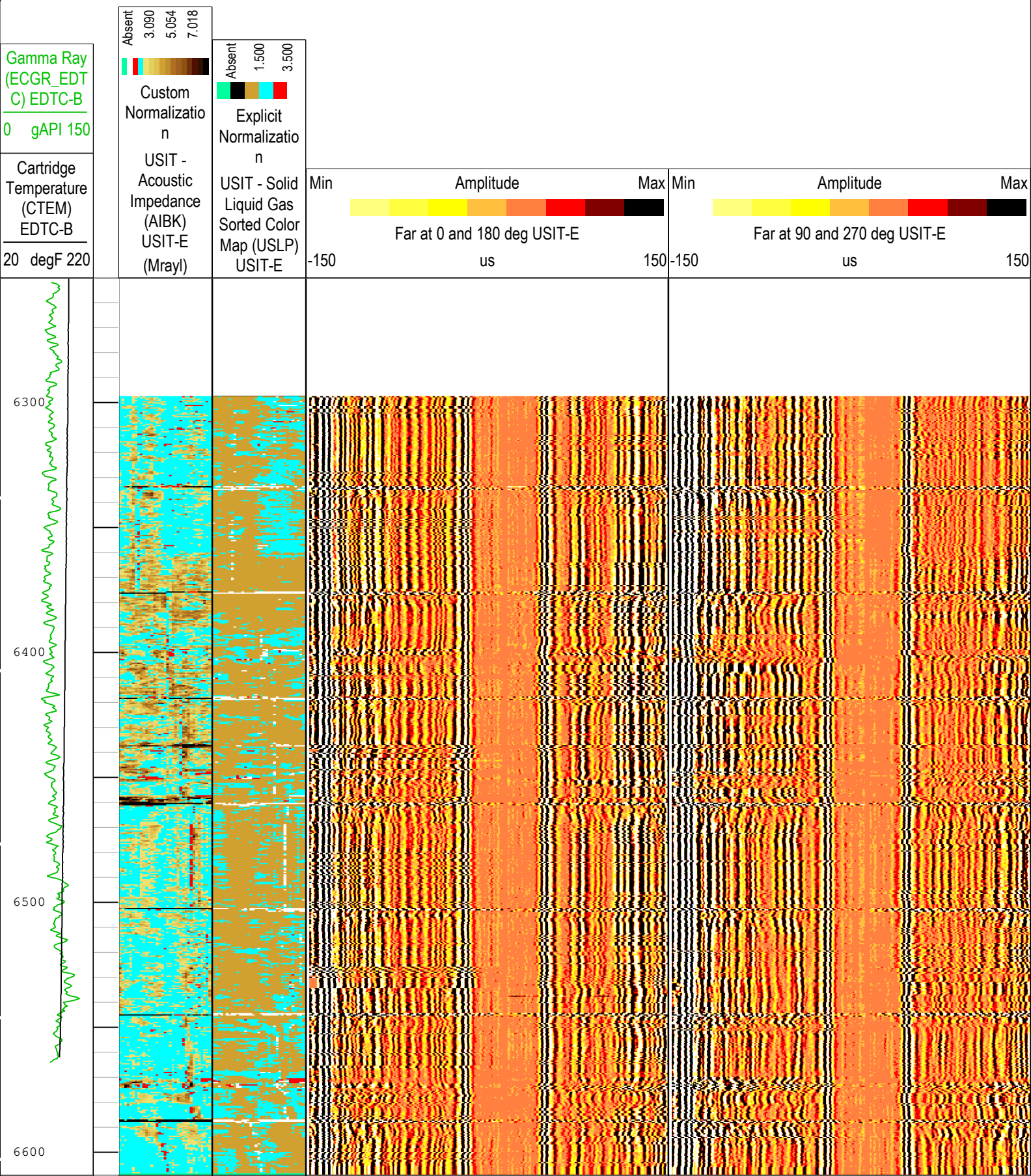
One	Log[5]:Up	Up	6298.00 ft	6610.06 ft	28-Oct-2021 8:45:41 AM	28-Oct-2021 8:50:35 AM	ON	8.07 ft	Yes
-----	-----------	----	------------	------------	------------------------	------------------------	----	---------	-----

All depths are referenced to toolstring zero

Log Company:Occidental Petroleum Well:Morton 37-1 One: Log[5]:Up:S007

Description: USI IBC VDL WIDE Format: Log (IBC VDL WIDE) Index Scale: 2 in per 100 ft Index Unit: ft Index Type: Measured Depth Creation Date: 28-Oct-2021 18:56:24

TIME_1900 - Time Marked every 60.00 (s)

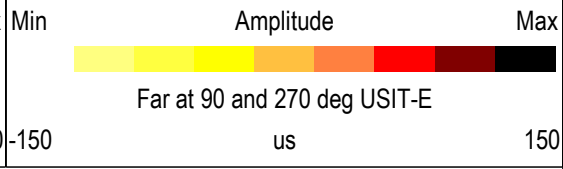
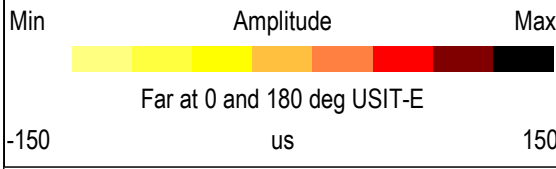
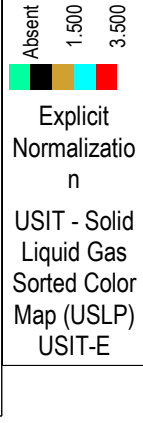
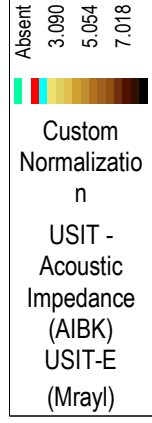


Gamma Ray
(ECGR_EDT
C) EDTC-B

0 gAPI 150

Cartridge
Temperature
(CTEM)
EDTC-B

20 degF 220



TIME_1900 - Time Marked every 60.00 (s)

Description: USI IBC VDL WIDE Format: Log (IBC VDL WIDE) Index Scale: 2 in per 100 ft Index Unit: ft Index Type: Measured Depth Creation Date: 28-Oct-2021 18:56:24

Company: Occidental Petroleum

Schlumberger

Well: Morton 37-1

Field: Wattenberg

County: Weld

State: Colorado

Isolation Scanner

VDL Wide

Gamma Ray - CCL