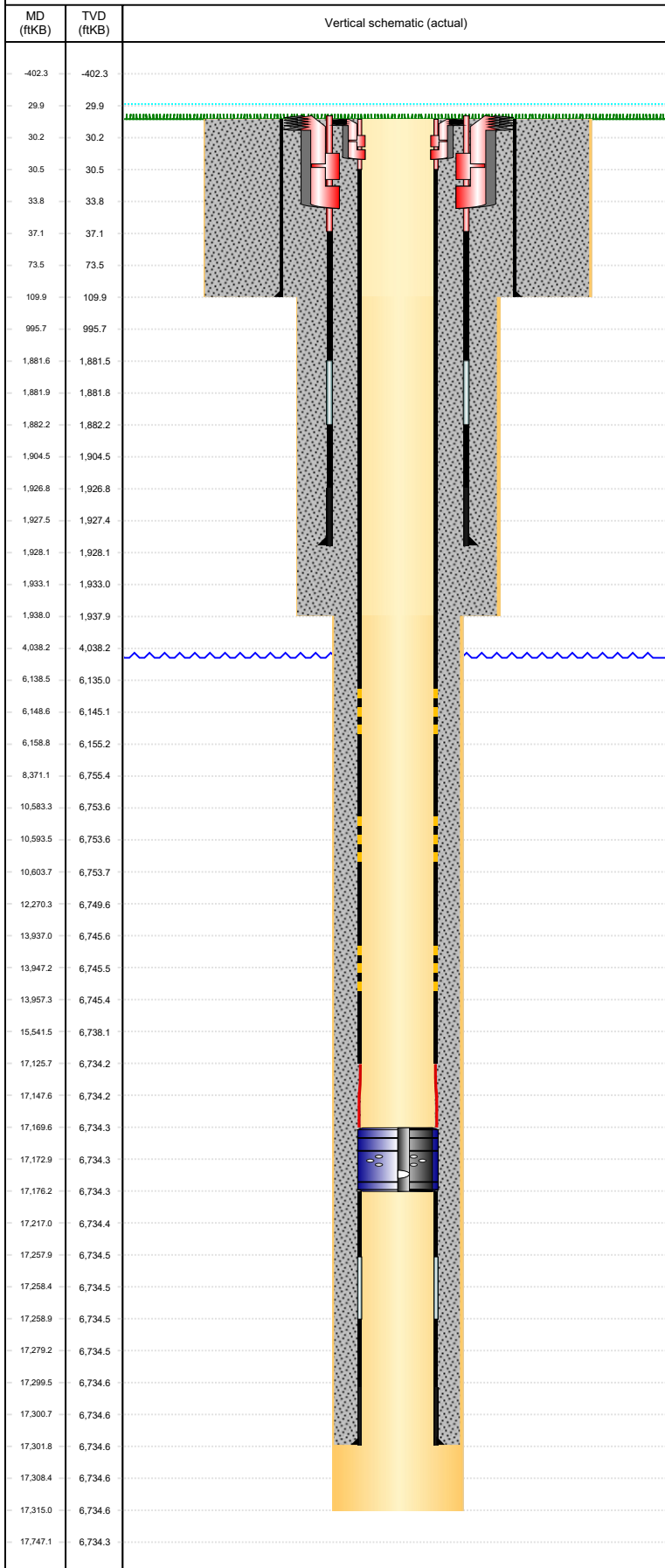


Well Name: GUTTERSEN D10-735

HORIZONTAL, ORIGINAL HOLE, 3/7/2022 8:49:49 AM



Well Header									
API 05-123-48914		Business Unit DJ BASIN		District 15		Well Config HORIZONTAL			
Original KB Elevation (ft) 4,727		KB - GL / MSL (ftKB) 30.00		Spud Date 2/3/2022		P & A Date			
Comment THERE IS AN EXCEPTION TO THE COGCC LOGGING REQUIREMENTS RULE 317.p. A cased-hole neutron log with gamma-ray log will be run from the kick-off point into the surface casing. See Sundry Doc. #402488383 dated 9/14/2020 for COA details. MLVT will be designed and implemented consistent with the June 13, 2014 COGCC MLVT policy. See Sundry Doc. #402476473 dated 08/27/2020									
Directions To Well CR40 & 57 south 1 mile, west 0.26 of a mile into									
Congressional Location									
Quarter 3 SE		Quarter 4 SW		Section 34	Township 4	Twnshp N/S Dir N	Range 64	Range E/W Dir W	
Bottom Hole Legal Location									
Bottom Hole Legal Location 6 35/SWSE-34-004N-064W6PM									
Plug Back Total Depths									
Date		Depth (ftKB)		Method		Com			
Wellbore Sections									
Section Des				Size (in)	Act Top, MD (ftKB)	Act Btm, MD (ftKB)			
CONDUCTOR				26	30	110			
SURFACE				13 1/2	110	1,938			
PRODUCTION				8 1/2	1938	17,315			
Zone Statuses									
Zone Name		Status Date	Status	Fluid Type	Job	Prod Method			
Casing Strings									
CONDUCTOR, 110.0ftKB									
Casing Description CONDUCTOR		Run Date 12/18/2021	OD (in) 16	Wt/Len (l... 36.94	Grade A-52A	Top, MD (ft... 30.0	MD (ftKB) 110.0		
SURFACE, 1,928.0ftKB									
Casing Description SURFACE		Run Date 2/3/2022	OD (in) 9 5/8	Wt/Len (l... 36.00	Grade J-55	Top, MD (ft... 30.0	MD (ftKB) 1,928.0		
PRODUCTION, 17,301.8ftKB									
Casing Description PRODUCTION		Run Date 2/16/2022	OD (in) 5 1/2	Wt/Len (l... 17.00	Grade P-110	Top, MD (ft... 30.0	MD (ftKB) 17,301.8		
Cement									
Description Conductor Cement					Top Depth (ftKB) 30.0		Bottom Depth (ftKB) 110.0		
Description Surface Casing Cement					Top Depth (ftKB) 30.0		Bottom Depth (ftKB) 1,928.0		
Description Production Casing Cement					Top Depth (ftKB) 30.0		Bottom Depth (ftKB) 17,301.8		
Tubing Strings									
Tubing Description TUBING - PRODUCTION		Run Date	String...	ID (in)	Wt (lb/ft)	Grade	Len (ft)	Set De...	
Other In Hole									
Run Date		Des		Make		OD (in)	Top (ftKB)	Btm (ftKB)	Pr op R un ?
Logs									
Date		Type				Top, MD (ftKB)	Btm, MD (ftKB)		