

Smith Energy LLC, S-Y Kirchenschlager 24-28  
125-10195

Inspection #688312303

3/1/2022

Routine Field Inspection



**SMITH ENERGY CORPORATION**

S-Y KIRCHENSCHLAGER #24-28  
SESW SEC.28-T1N-R48W  
WEST OF HIGHWAY 59 ON CR 32,  
2 MI. & SOUTH INTO LOC.  
YUMA CO. COLORADO

Colorado Oil and Gas Conservation Commission

40.01997, -102.74926, 4065.0ft, 127°

03/01/2022 01:15:34 PM

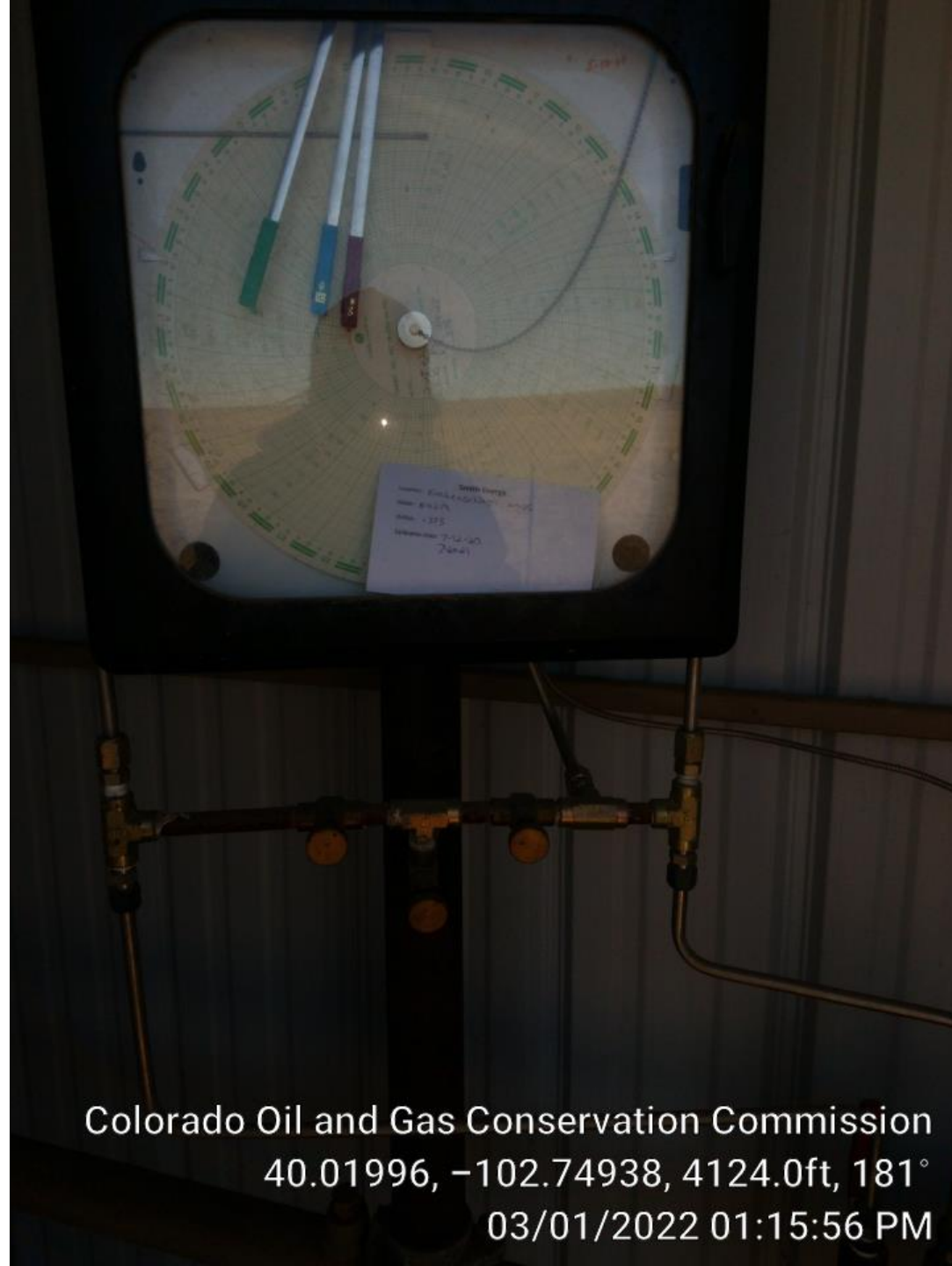


Colorado Oil and Gas Conservation Commission  
40.01996, -102.74937, 4110.9ft, 91°  
03/01/2022 01:15:49 PM





Colorado Oil and Gas Conservation Commission  
40.01997, -102.74931, 4101.0ft, 107°  
03/01/2022 01:15:40 PM



Colorado Oil and Gas Conservation Commission  
40.01996, -102.74938, 4124.0ft, 181°  
03/01/2022 01:15:56 PM



**SMITH ENERGY CORPORATION**  
S-Y KIRCHENSCHLAGER #24-28  
SESW SEC.28-T1N-R48W  
WEST OF HIGHWAY 59 ON CR 32,  
2 MI. & SOUTH INTO LOC.  
YUMA CO., COLORADO  
PHONE : 97(970) 630-5723  
EMERGENCY: 911

Colorado Oil and Gas Conservation Commission  
40.01985, -102.74914, 4130.6ft, 313°  
03/01/2022 01:16:52 PM





Colorado Oil and Gas Conservation Commission  
40.01987, -102.74914, 4137.1ft, 84°  
03/01/2022 01:17:00 PM