

Smith Energy LLC, S-Y Kirchenschlager 12-28  
125-10197

Inspection #688312301

3/1/2022

Routine Field Inspection

**SMITH ENERGY CORPORATION**  
S-Y KIRCHENSCHLAGER #12-28  
SWNW SEC.28-T1N-R48W  
WEST OF HIGHWAY 59 ON CR 32,  
2 MI. & SOUTH INTO LOC.  
YUMA CO., COLORADO  
PHONE : 97 (970) 630-5723  
EMERGENCY: 911

Colorado Oil and Gas Conservation Commission  
40.02529, -102.75205, 4104.3ft, 132°  
03/01/2022 12:54:49 PM



Colorado Oil and Gas Conservation Commission  
40.02529, -102.75204, 4104.3ft, 319°  
03/01/2022 12:54:59 PM



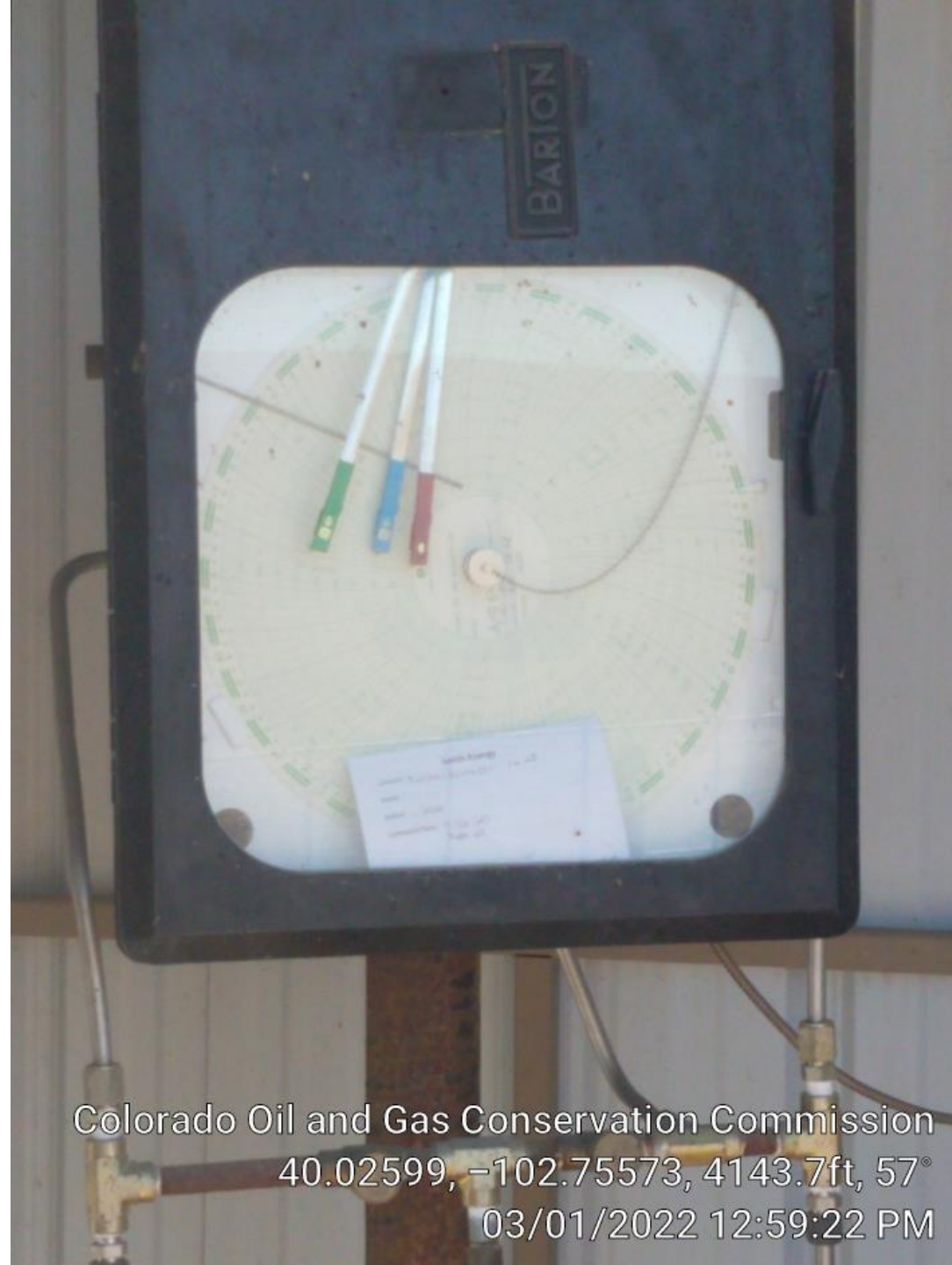


Colorado Oil and Gas Conservation Commission  
40.02527, -102.75206, 4117.5ft, 352°  
03/01/2022 12:55:09 PM



Colorado Oil and Gas Conservation Commission  
40.02601, -102.75567, 4140.4ft, 94°  
03/01/2022 12:59:10 PM





Colorado Oil and Gas Conservation Commission  
40.02599, -102.75573, 4143.7ft, 57°  
03/01/2022 12:59:22 PM



Colorado Oil and Gas Conservation Commission  
40.02599, -102.75576, 4130.6ft, 158°  
03/01/2022 12:59:47 PM



Colorado Oil and Gas Conservation Commission  
40.02599, -102.75577, 4133.9ft, 131°  
03/01/2022 12:59:41 PM