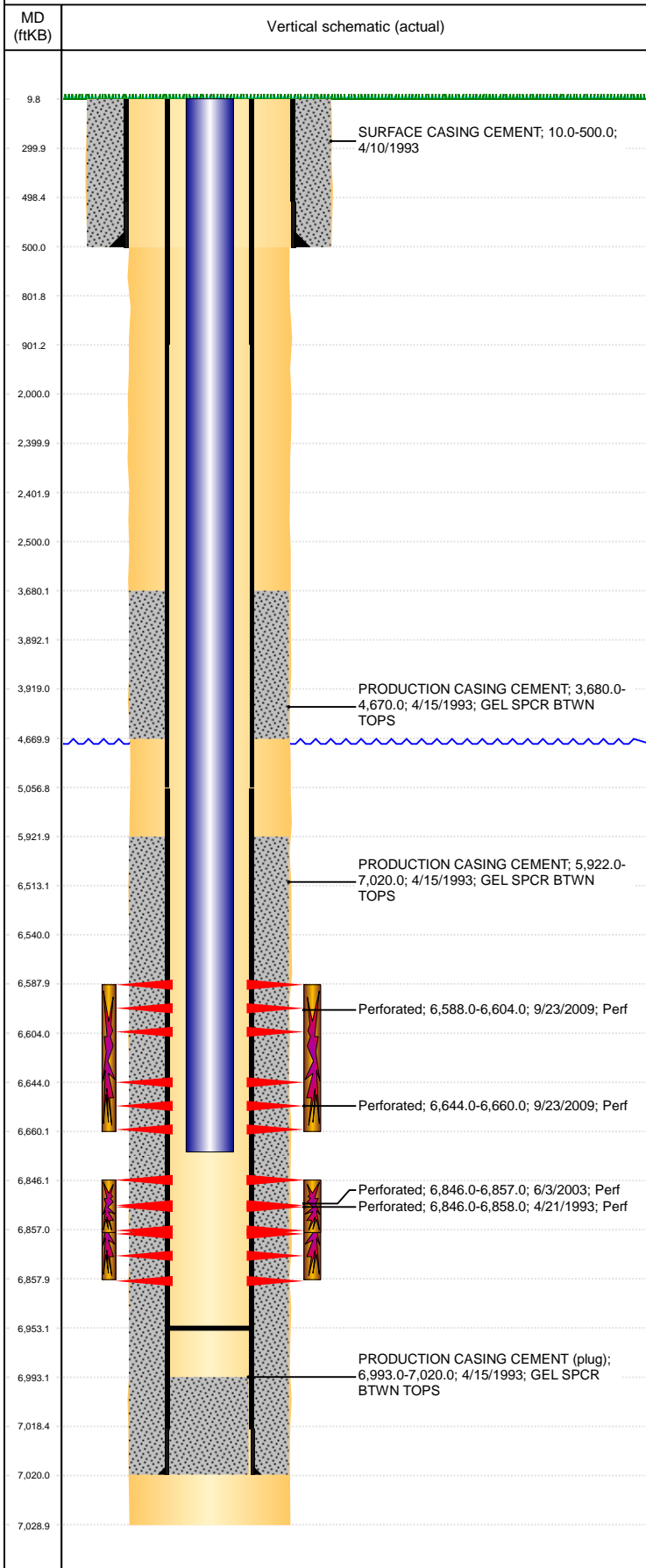


Well Name: CODY WHITE D03-08

VERTICAL, ORIGINAL HOLE, 3/3/2022 4:55:15 PM



Well Header									
API 05-123-16942		Business Unit DJ BASIN			District 15		Well Config VERTICAL		
KB - GL / MSL (ft... 10.00		Spud Date 4/10/1993		P & A Date		Well Production Status PR			SoRT No
Comment PRODUCTION CASING IS 11.6 & 10.5 TIGHT SPOT AT 6756' CAN NOT GET 2 3/8" TUBING PAST.									
Surface Location (Congressional)									
Qtr 3 SE	Qtr 4 NE	Section 3	Twnshp 3	Twnsh... N	Range 64	Rng E/... W	Actual Latitude (°) 40.25631772	Actual Longitude (°) -104.53007316	
Wellbore Sections									
Section Des			Size (in)			Act Top, MD (ftKB)		Act Btm, MD (ftKB)	
SURFACE			12 1/4			10		500	
PRODUCTION			7 7/8			500		7,029	
Casing Strings									
Csg Des			Run Date		OD (in)	Wt/Len (lb/ft)	Grade	Top, MD (ftKB)	MD (ftKB)
Surface					8 5/8	24.00	J-55	10.0	500.0
Production			4/15/1993		4 1/2	10.50	J-55	10.0	7,020.0
Cement									
Des					Start Date		Top (ftKB)		Btm (ftKB)
SURFACE CASING CEMENT					4/10/1993		10.0		500.0
PRODUCTION CASING CEMENT					4/15/1993		3,680.0		4,670.0
PRODUCTION CASING CEMENT					4/15/1993		5,922.0		7,020.0
Zone Statuses									
Zone Name	Status Date	Status	Fluid Type	Job				Prod Method	
CODELL	11/9/2009	PR		RECOMPLETION, 9/21/2009 06:00				Flowing	
CODELL	2/16/2010	PR							
NIOBRARA	11/9/2009	PR		RECOMPLETION, 9/21/2009 06:00				Flowing	
NIOBRARA	2/16/2010	PR							
Perforation Data									
Linked Zone		Bnch/Stg	Entered Shot Total	Top (ftKB)		Btm (ftKB)		Date	
NIOBRARA, ORIGINAL HOLE			32	6,588.00		6,604.00		9/23/2009	
NIOBRARA, ORIGINAL HOLE			32	6,644.00		6,660.00		9/23/2009	
CODELL, ORIGINAL HOLE			50	6,846.00		6,858.00		4/21/1993	
CODELL, ORIGINAL HOLE			44	6,846.00		6,857.00		6/3/2003	
Stimulation Intervals									
Zone				Start Date		Top (ftKB)		Btm (ftKB)	
NIOBRARA, ORIGINAL HOLE				10/1/2009		6,588.0		6,660.0	
CODELL, ORIGINAL HOLE				4/24/1993		6,846.0		6,858.0	
CODELL, ORIGINAL HOLE				6/18/2003		6,846.0		6,857.0	
Other In Hole									
Run Date	Des				Make		OD (in)	Top (ftKB)	Btm (ftKB)
Logs									
Date		Type					Top, MD (ftKB)		Btm, MD (ftKB)
4/15/1993		COMPENSATED DENSITY					4,100.0		7,012.0
4/15/1993		INDUCTION					4,100.0		4,430.0
4/21/1993		CBL/CCL/GR					3,600.0		6,958.0
Plug Back Total Depths									
Date		Type		Com					Depth (ftKB)
11/2/2009		FILL		CAN NOT GET PAST THIS SPOT WITH 2 3/8" SEAT NIPPLE					6,753.0
11/3/2009		FILL		CLEANED OUT WITH 1 1/4" TUBING. TIGHT SPOT AT 6753'					6,953.0