

OWN Resources Operating LLC, Hesse 1-10
125-08332

Inspection #688312280

2/28/2022

Routine Field Inspection



COLORADO

Oil & Gas Conservation
Commission

Department of Natural Resources



OWN RESOURCES OPERATING

HESSE #01-10

NESW/4, SEC. 10-T1N-R45W

YUMA COUNTY, CO

PH: 970-332-3585 OR 911

API #05-125-08332

Colorado Oil and Gas Conservation Commission

40.06314, -102.39293, 3743.4ft, 37°

02/28/2022 01:14:21 PM



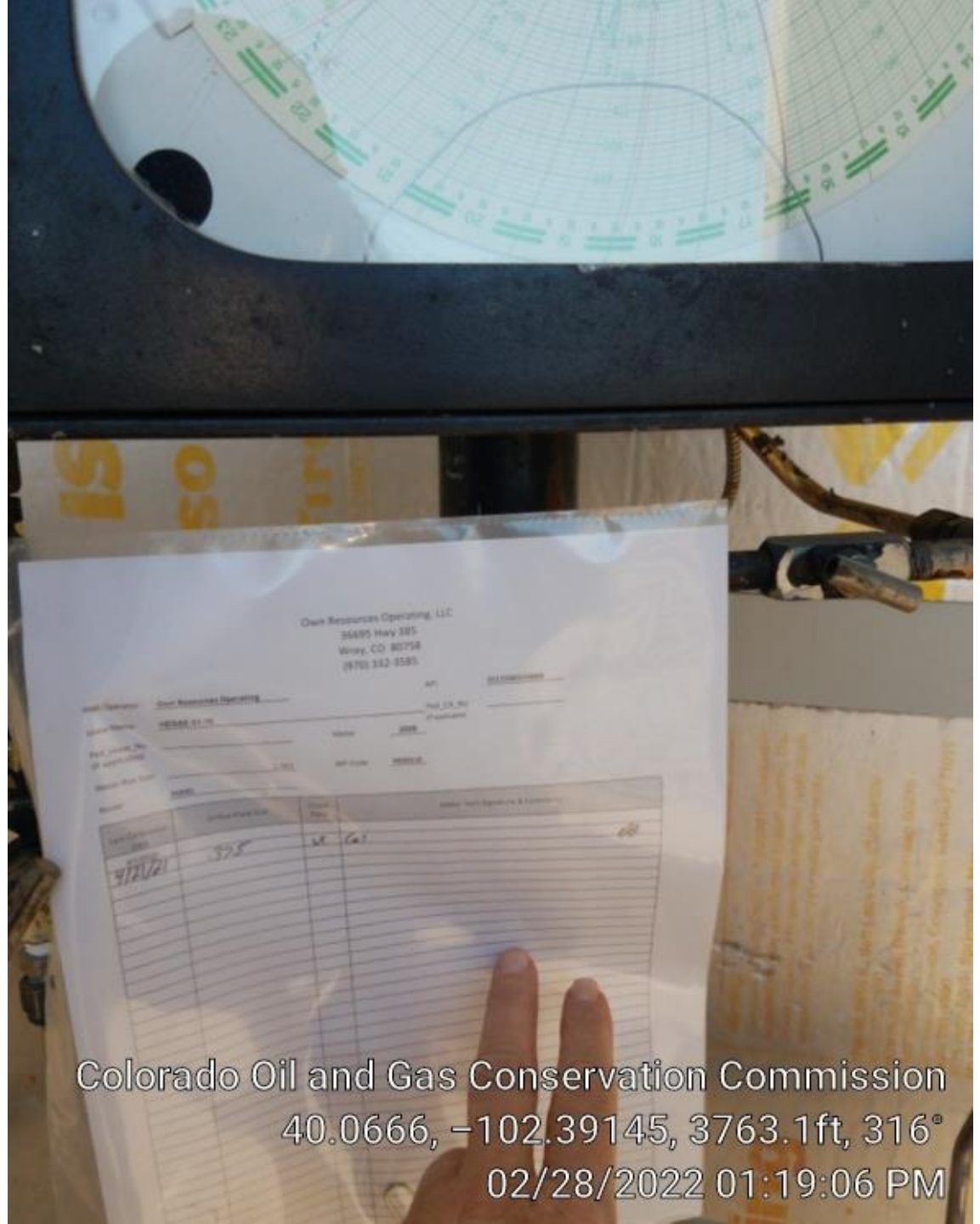
Colorado Oil and Gas Conservation Commission
40.0665, -102.39145, 3720.5ft, 344°
02/28/2022 01:17:52 PM



Colorado Oil and Gas Conservation Commission
40.06658, -102.39138, 3759.8ft, 294°
02/28/2022 01:18:15 PM



Colorado Oil and Gas Conservation Commission
40.0666, -102.39138, 3763.1ft, 345°
02/28/2022 01:18:20 PM



Colorado Oil and Gas Conservation Commission
40.0666, -102.39145, 3763.1ft, 316°
02/28/2022 01:19:06 PM