

Foundation Energy Management LLC, Rockwell 41-15  
125-09044

Inspection #688312273

2/28/2022

Routine Field Inspection

FOUNDATION ENERGY  
ROCKWELL No. 41-15  
NE NE SEC. 15-1N-45W  
ROADS Z & 34  
YUMA COUNTY, CO  
24 - HOUR EMERGENCY CALL:  
1-866-767-3000

FOUNDATION ENERGY  
ROCKWELL No. 31-15  
NW NE SEC. 15-1N-45W  
1/2 MI. W. OF RDS. Z & 34  
YUMA COUNTY, CO  
24 - HOUR EMERGENCY CALL:  
1-866-767-3000

Colorado Oil and Gas Conservation Commission  
40.0598, -102.37914, 3753.3ft, 265°  
02/28/2022 12:39:22 PM

FOUNDATION ENERGY

ROCKWELL No. 41-15

NE NE SEC. 15-1N-45W

ROADS Z & 34

YUMA COUNTY, CO

24-HOUR EMERGENCY CALL  
1-866-767-3600

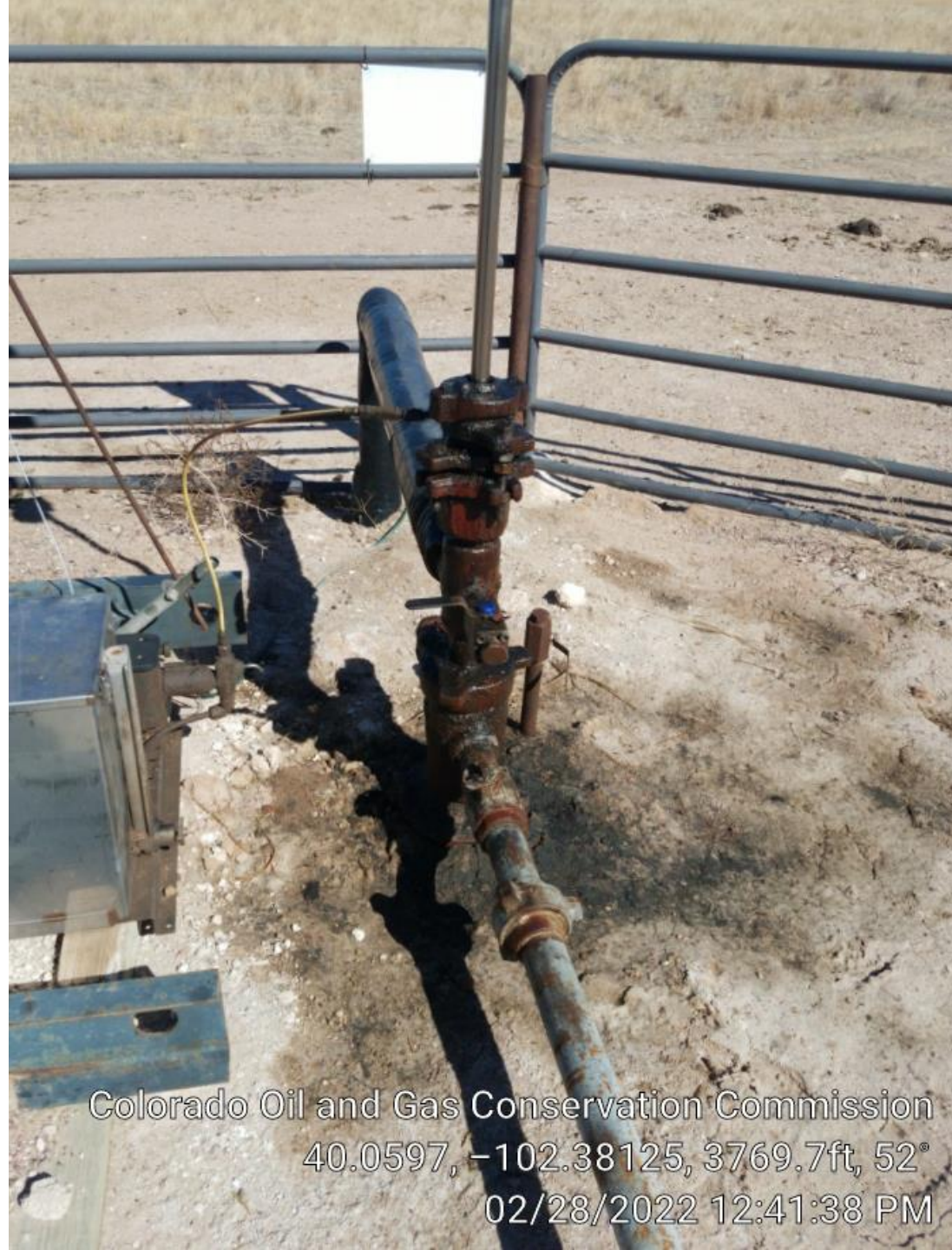
Colorado Oil and Gas Conservation Commission

40.05968, -102.38123, 3773.0ft, 247°

02/28/2022 12:40:53 PM



Colorado Oil and Gas Conservation Commission  
40.05972, -102.38126, 3773.0ft, 148°  
02/28/2022 12:41:02 PM



Colorado Oil and Gas Conservation Commission  
40.0597, -102.38125, 3769.7ft, 52°  
02/28/2022 12:41:38 PM



Colorado Oil and Gas Conservation Commission  
40.05969, -102.3813, 3763.1ft, 120°  
02/28/2022 12:41:47 PM



Colorado Oil and Gas Conservation Commission  
40.05966, -102.38127, 3766.4ft, 74°  
02/28/2022 12:41:56 PM

