

Foundation Energy Management LLC, Rockwell 43-15
125-07544

Inspection #688312271

2/28/2022

Routine Field Inspection



FOUNDATION
ENERGY MANAGEMENT, LLC
ROCKWELL 43-15
NESE Sec. 15-T1N-R45W
Rd 7 & 34, S 1/4 Mile, W & S into

970-848-0551
24-HOUR EMERGENCY CALL:
1-866-767-3600

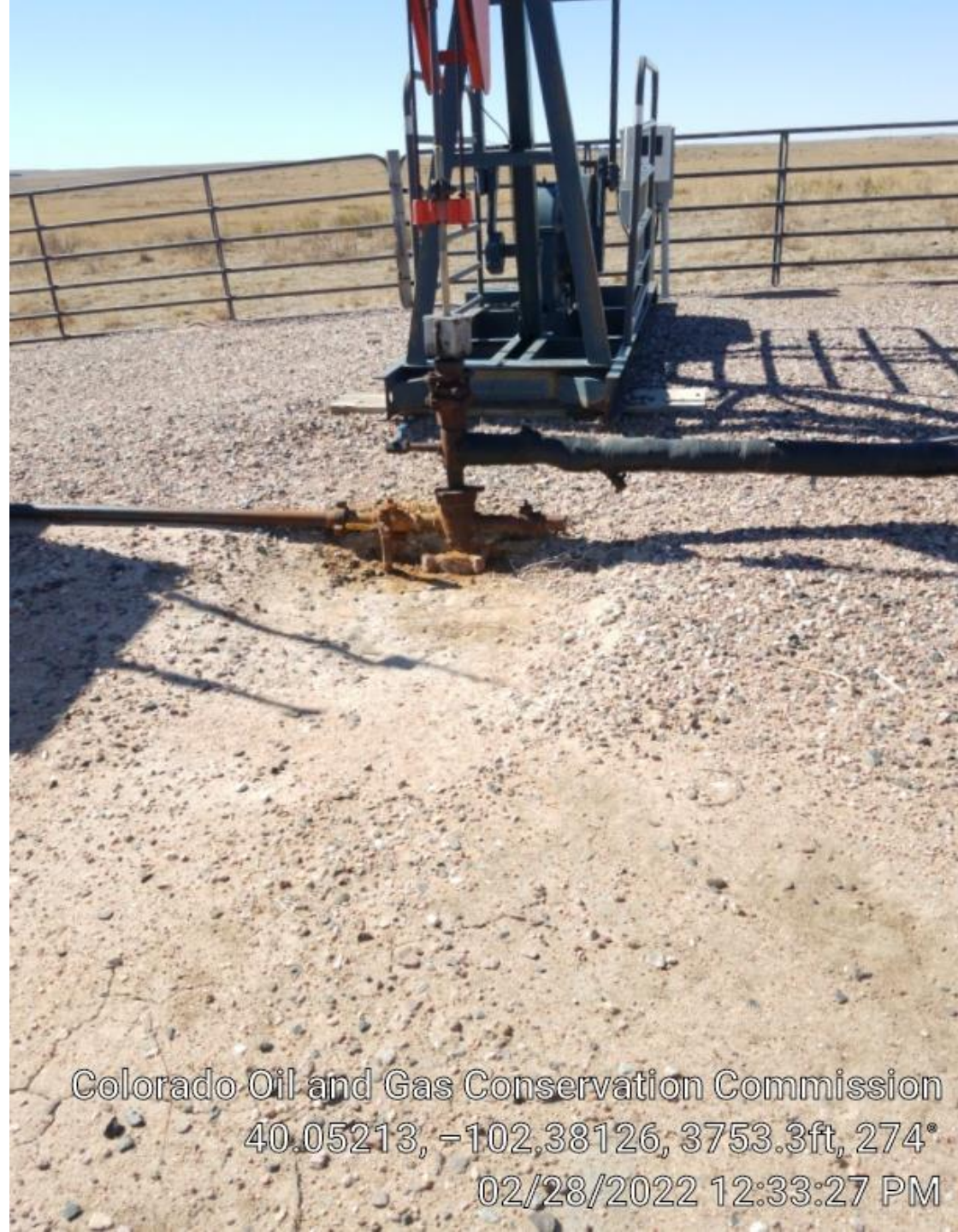
Colorado Oil and Gas Conservation Commission
40.05214, -102.38125, 3746.7ft, 246°
02/28/2022 12:33:04 PM



Colorado Oil and Gas Conservation Commission

40.05214, -102.38125, 3746.7ft, 268°

02/28/2022 12:33:19 PM



Colorado Oil and Gas Conservation Commission
40.05213, -102.38126, 3753.3ft, 274°
02/28/2022 12:33:27 PM



Colorado Oil and Gas Conservation Commission
40.05212, -102.38129, 3763.1ft, 329°
02/28/2022 12:33:50 PM



Colorado Oil and Gas Conservation Commission
40.05211, -102.38129, 3766.4ft, 83°
02/28/2022 12:34:06 PM

Colorado Oil and Gas Conservation Commission
40.05211, -102.38129, 3766.4ft, 62°
02/28/2022 12:34:16 PM



Colorado Oil and Gas Conservation Commission

40.05214, -102.38125, 3746.7ft, 154°

02/28/2022 12:33:07 PM



Colorado Oil and Gas Conservation Commission

40.05214, -102.38125, 3746.7ft, 117°

02/28/2022 12:33:10 PM



Colorado Oil and Gas Conservation Commission

40.05214, -102.38125, 3746.7ft, 83°

02/28/2022 12:33:12 PM