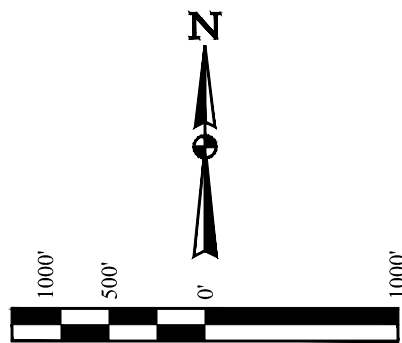


T1S, R67W, 6th P.M.



1998 Alum. Cap.  
#24667, 1.0' Below  
Ground In Monument Box  
Lat: 39.986339°  
Long: 104.922047°

1995 Alum. Cap.  
#6973, Below  
Ground  
Lat: 39.986364°  
Long: 104.912683°

Brass Cap, Below Ground  
In Monument Box  
Lat: 39.986386°  
Long: 104.903319°

Brass Cap, Flush  
with Concrete  
Lat: 39.986428°  
Long: 104.893853°

2002 Alum. Cap.  
#23027, 0.9'  
Below Ground  
Lat: 39.986558°  
Long: 104.884414°

See Detail "A"  
@ Below Right

2000 Alum. Cap.  
#23027, Below Ground  
In Gravel Road  
Lat: 39.979125°  
Long: 104.912656°

W.C.  
2014 Alum. Cap.  
#28285  
Lat: 39.979131°  
Long: 104.903392°

True Position  
Lat: 39.979131°  
Long: 104.903286°

2012 Alum. Cap.  
#25369, 0.6'  
Below Ground  
Lat: 39.979219°  
Long: 104.893819°

2008 Alum. Cap.  
#37971, 0.3' Below  
Ground  
Lat: 39.979308°  
Long: 104.884375°

1999 Alum. Cap.  
#24960, 1.0' Below  
Ground In Gravel Road  
Lat: 39.979106°  
Long: 104.922022°

2013 Alum. Cap.  
#38304, 0.8'  
Below Ground  
In Monument Box  
Lat: 39.971875°  
Long: 104.922000°

1999 Alum. Cap.  
#24960, 0.2'  
Below Ground  
In Gravel Road  
Lat: 39.971872°  
Long: 104.912625°

2010 Alum. Cap.  
#34997, 0.5'  
Below Ground  
Lat: 39.971872°  
Long: 104.903250°

W.C.  
2013 Alum. Cap.  
#25369, 0.3'  
Below Ground  
Lat: 39.971975°  
Long: 104.893256°

2008 Alum. Cap.  
#37971, 0.3'  
Below Ground  
Lat: 39.972069°  
Long: 104.884322°

2013 Alum. Cap.  
#38304, 0.8'  
Below Ground  
In Monument Box  
Lat: 39.968264°  
Long: 104.922019°

2013 Alum. Cap.  
#38304, 0.8'  
Below Ground  
In Broken  
Monument Box  
Lat: 39.964656°  
Long: 104.922042°

2015 Alum. Cap.  
#38445, Flush with  
Ground  
Lat: 39.964719°  
Long: 104.903222°

2015 Alum. Cap.  
#25965, 0.8'  
Below Ground  
Lat: 39.972783°  
Long: 104.893772°

2015 Alum. Cap.  
#37971, 0.3'  
Below Ground  
Lat: 39.964850°  
Long: 104.884325°

Alum. Cap, 0.9'  
Below Ground  
In Monument Box  
Lat: 39.957439°  
Long: 104.922083°

1998 Alum. Cap.  
#7361, 0.5'  
Below Ground  
Lat: 39.957503°  
Long: 104.912639°

1999 Alum. Cap.  
#24960, 0.5'  
Below Ground  
Lat: 39.957567°  
Long: 104.903192°

1997 Alum. Cap.  
#6973, 1.0'  
Below Ground  
Lat: 39.957800°  
Long: 104.893758°

1997 Alum. Cap.  
#6973, 0.5'  
Below Ground  
Lat: 39.957631°  
Long: 104.884322°

Alum. Cap, #23044,  
0.3' Below Ground  
Lat: 39.950194°  
Long: 104.922025°

Alum. Cap, #23044,  
0.3' Below Ground  
Lat: 39.946572°  
Long: 104.921997°

1998 Alum. Cap.  
#7361, 0.3'  
Below Ground  
Lat: 39.950319°  
Long: 104.903153°

1999 Alum. Cap.  
#24960, 0.3'  
Below Ground  
Lat: 39.950342°  
Long: 104.893728°

2009 Alum. Cap.  
#13482, Flush  
w/Ground  
Lat: 39.950361°  
Long: 104.884322°

2007 Alum. Cap.  
#28286, 0.5'  
Below Ground  
Lat: 39.943111°  
Long: 104.893697°

2013 Alum. Cap.  
#36073, 0.7'  
Below Ground  
Lat: 39.943122°  
Long: 104.884283°

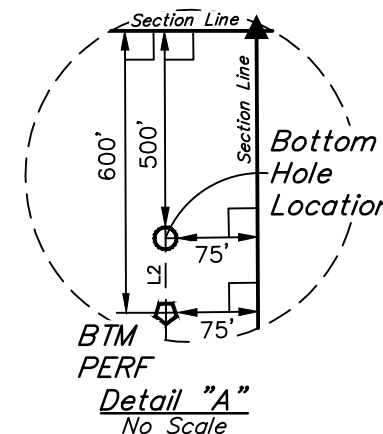
Corner Position  
Re-Established  
(Not Set on Ground)  
Lat: 39.942964°  
Long: 104.921964°

1994 Alum. Cap.  
#6973, 1.0'  
Below Ground  
Lat: 39.943075°  
Long: 104.903114°

**BASIS OF ELEVATION**  
BENCHMARK JR 53 5026 LOCATED IN THE SW 1/4 SE 1/4 OF SECTION 18, T1N,  
R68W, 6th P.M., TAKEN FROM 1988 PUBLISHED DATUM BY THE UNITED  
STATES DEPARTMENT OF THE INTERIOR, GEOLOGICAL SURVEY AS BEING  
5028 FEET.

- LEGEND:**
- = 90° SYMBOL
  - = SURFACE LOCATION.
  - ◆ = ENTRY POINT.
  - = BTM PERF.
  - = BOTTOM HOLE LOCATION.
  - ▲ = SECTION CORNERS  
LOCATED. (NAD 83)
  - △ = SECTION CORNERS  
RE-ESTABLISHED.  
(Not Set on Ground.)  
(NAD 83)

LINE TABLE		
LINE	DIRECTION	LENGTH
L1	N74°42'13"W	3390.66'
L2	N00°17'58"W	100.00'



PDOP = 1.6

NAD 83 (SURFACE LOCATION)	
LATITUDE =	39°57'24.27" (39.956741)
LONGITUDE =	104°53'30.51" (104.891808)
NAD 27 (SURFACE LOCATION)	
LATITUDE =	39°57'24.32" (39.956756)
LONGITUDE =	104°53'28.59" (104.891276)
NAD 83 (ENTRY POINT)	
ATTITUDE =	39°57'33.16" (39.959211)
LONGITUDE =	104°54'12.48" (104.903466)
NAD 27 (ENTRY POINT)	
LATITUDE =	39°57'33.21" (39.959226)
LONGITUDE =	104°54'10.56" (104.902934)
NAD 83 (BTM PERF)	
LATITUDE =	39°59'05.06" (39.984740)
LONGITUDE =	104°54'12.88" (104.903579)
NAD 27 (BTM PERF)	
LATITUDE =	39°59'05.12" (39.984756)
LONGITUDE =	104°54'10.97" (104.903047)
NAD 83 (BOTTOM HOLE LOCATION)	
LATITUDE =	39°59'06.05" (39.985014)
LONGITUDE =	104°54'12.89" (104.903580)
NAD 27 (BOTTOM HOLE LOCATION)	
LATITUDE =	39°59'06.11" (39.985030)
LONGITUDE =	104°54'10.97" (104.903048)

CERTIFICATE OF RECORD REGISTRATION  
THIS IS TO CERTIFY THAT THE ABOVE SAID SURVEY HAS BEEN PREPARED AND  
NOTES OF ACTUAL SURVEYS MADE BY ME OR UNDER MY SUPERVISION  
AND THAT THE SAME ARE TRUE AND CORRECT TO THE BEST OF MY  
KNOWLEDGE AND BELIEF.

RECORDED LAND SURVEYOR  
RECORD NO. 2838  
STATE OF COLORADO  
JULY 22, 2016

REV: 23 01-18-22 P.M. (NAME CHANGE & UPDATE SURFACE LOCATION TO AS-DRILLED)

GREAT WESTERN OPERATING COMPANY

KORTUM LD 08-041HN  
NW 1/4 NE 1/4, SECTION 21, T1S, R67W, 6th P.M.  
ADAMS COUNTY, COLORADO



UELS, LLC  
Corporate Office \* 85 South 200 East  
Vernal, UT 84078 \* (435) 789-1017

SURVEYED BY: JARED CHRISTOPHER, G.W.	DATE: 11-21-16
DRAWN BY: D.COX	DATE DRAWN: 11-28-16
SCALE: 1" = 1000'	

WELL LOCATION PLAT