

Inspection Photos

Location Name: Mckinney 1-9

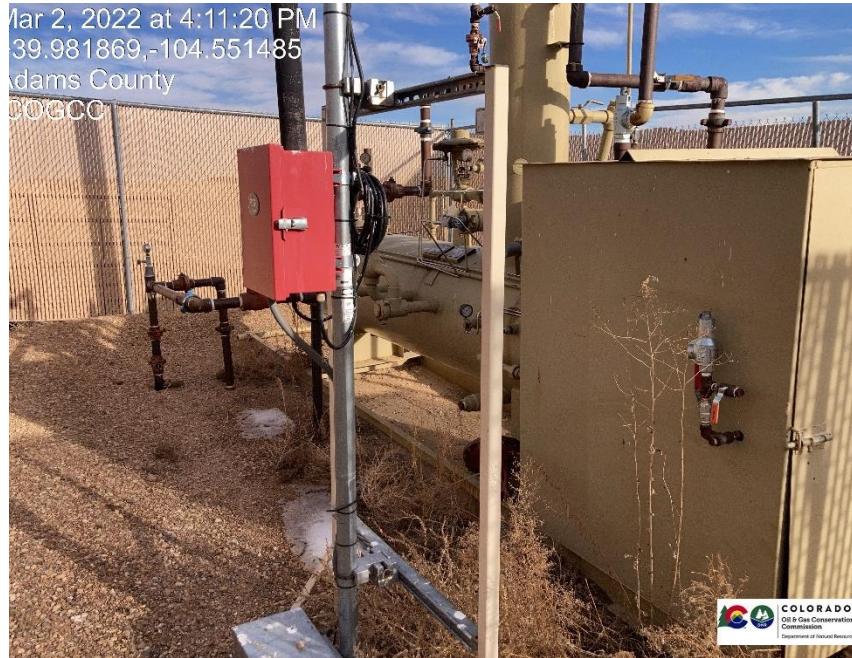
Location ID: 320529



Pic 1 wellhead. At time of inspection master valve, and flowline valve were in the open position. During inspection master valve, and flowline valve were put in the close position.



Pic 2 Tanks. At time of inspection production fluid appeared to be in metal tank, fiberglass tank appeared to be empty.



Pic 3 separator/ automation equipment

