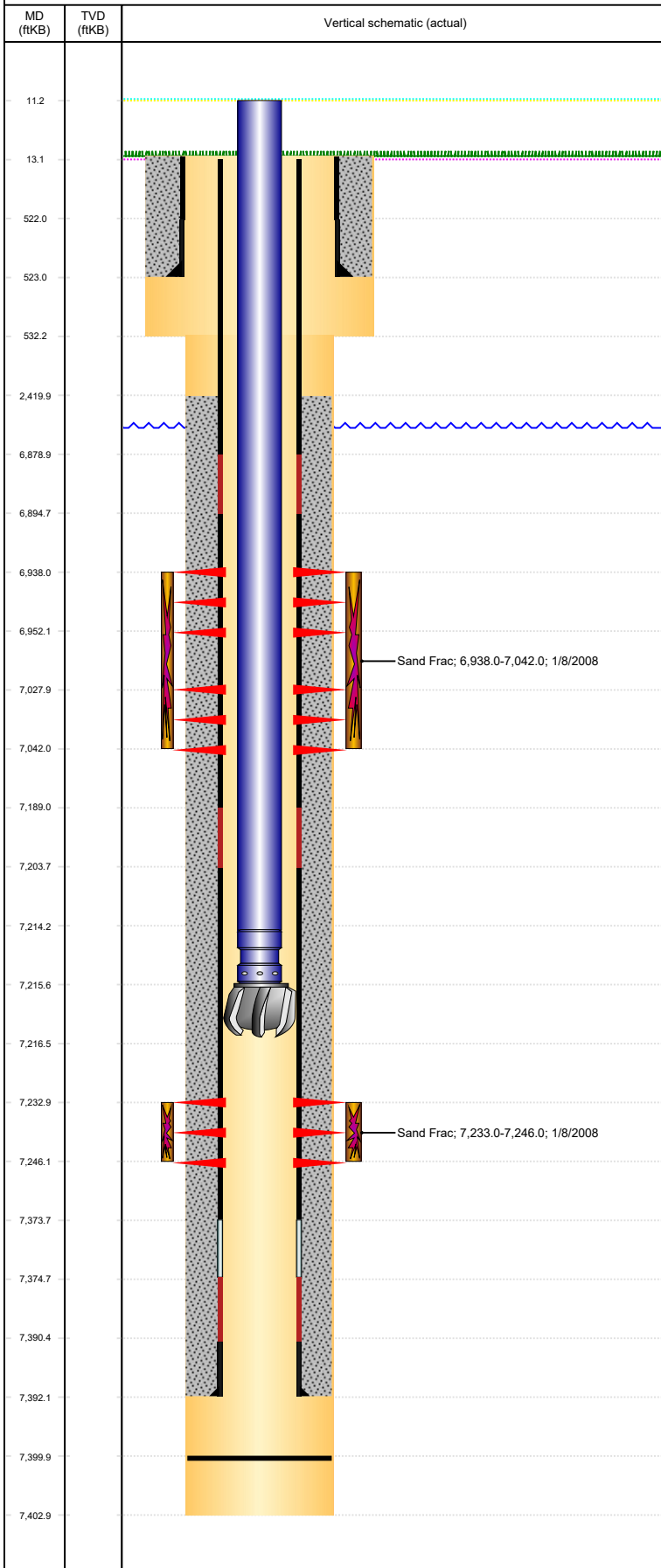


# Wellbore Schematic Input Report-DJ

Well Name: JEPSEN G21-25

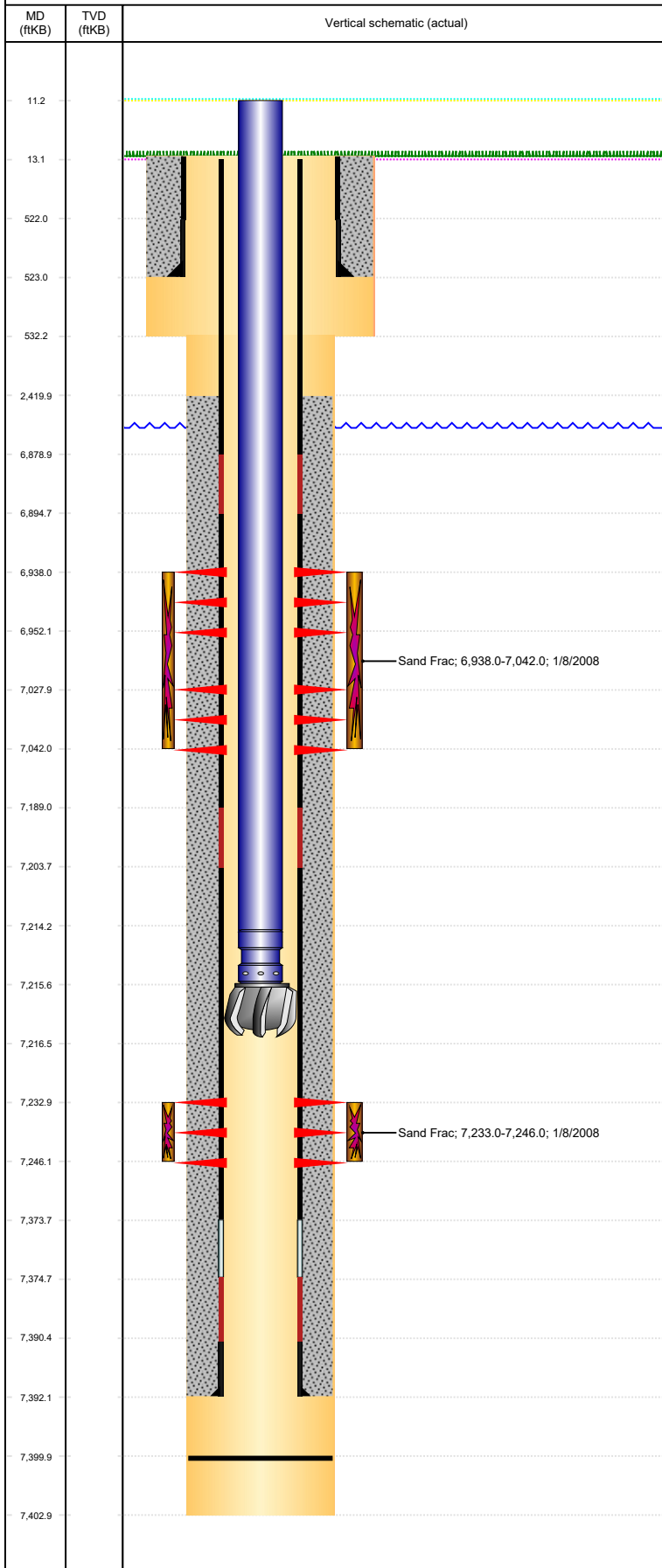
VERTICAL, ORIGINAL HOLE, 3/1/2022 12:36:13 PM



Well Header							
API 05-123-24295	Business Unit DJ BASIN		District 15		Well Config VERTICAL		
Original KB Elevation (ft) 4,864	KB - GL / MSL (ftKB) 13.00		Spud Date 11/27/2007		P & A Date		
Comment							
Directions To Well From the intersection of CR #41 and CR # 42, East 3/10, North on access road, follow access road to wellsite.							
Congressional Location							
Quarter 3 SE	Quarter 4 SW	Section 21	Township 4	Twntshp N/S Dir N	Range 65	Range E/W Dir W	
Bottom Hole Legal Location							
Bottom Hole Legal Location							
Plug Back Total Depths							
Date	Depth (ftKB)	Method		Com			
2/4/2009	7,400.0	TAG					
Wellbore Sections							
Section Des		Size (in)		Act Top, MD (ftKB)		Act Btm, MD (ftKB)	
Surface		12 1/4		13		532	
Production		7 7/8		532		7,403	
Zone Statuses							
Zone Name	Status Date	Status	Fluid Type	Job	Prod Method		
CODELL	1/9/2008	PR	Gas	DRILLING/CO...	Flowing		
CODELL	2/5/2010	PR	Water				
CODELL	10/27/2016	PR					
CODELL	11/29/2016	SI					
NIOBRARA	1/9/2008	PR	Gas	DRILLING/CO...	Flowing		
NIOBRARA	2/5/2010	PR	Water				
Casing Strings							
Surface, 523.0ftKB							
Casing Description	Run Date	OD (in)	Wt/Len (l...	Grade	Top, MD (ft...	MD (ftKB)	
Surface	11/27/2007	8 5/8	24.00	J-55	13.0	523.0	
Production, 7,392.0ftKB							
Casing Description	Run Date	OD (in)	Wt/Len (l...	Grade	Top, MD (ft...	MD (ftKB)	
Production	11/30/2007	4 1/2	11.60	M-80	13.1	7,392.0	
Cement							
Description				Top Depth (ftKB)		Bottom Depth (ftKB)	
SURFACE CASING CEMENT				13.0		523.0	
Description				Top Depth (ftKB)		Bottom Depth (ftKB)	
PRODUCTION CASING CEMENT				2,420.0		7,392.0	
Tubing Strings							
Tubing Description	Run Date	String...	ID (in)	Wt (lb/ft)	Grade	Len (ft)	Set De...
Tubing - Production	2/4/2009	2 3/8	2.00	4.70	J-55	7,205.42	
Tubing Components							
Item Des	OD (in)	Wt (lb/ft)	Grade	Jts	Len (ft)	Btm (ftKB)	Btm (TVD) (ftKB)
Tubing	2 3/8	4.70	J-55	235	7,203.32	7,214.3	
Pump Seating	2 3/8			1	1.20	7,215.5	
Blade Bit	3 7/8			1	0.90	7,216.4	
Other In Hole							
							Pr op R un a
Run Date	Des	Make	OD (in)	Top (ftKB)	Btm (ftKB)		
Logs							
Date	Type				Top, MD (ftKB)	Btm, MD (ftKB)	
11/30/2007	Caliper/Comp.Density/Neutron/GR/SP /ML				522.0	7,375.0	
11/30/2007	DIL/GR/SP/Caliper				2,590.0	7,375.0	
12/12/2007	CBL/CCL/GR				2,300.0	7,340.0	
Perforation Data							
Linked Zone	Bnch/St g	Sum of Entered Shot Total	Top (ftKB)	Btm (ftKB)	Date		
NIOBRARA, ORIGINAL HOLE	A	56	6,938.00	6,952.00	1/8/2008		
NIOBRARA, ORIGINAL HOLE	B	56	7,028.00	7,042.00	1/8/2008		

**Well Name: JEPSEN G21-25**

VERTICAL, ORIGINAL HOLE, 3/1/2022 12:36:14 PM



Perforation Data					
Linked Zone	Bnch/St g	Sum of Entered Shot Total	Top (ftKB)	Btm (ftKB)	Date
CODELL, ORIGINAL HOLE		52	7,233.00	7,246.00	12/17/2007
Total		164			
Stimulation Intervals					
Interval... 1	Start Date 1/8/2008	Primary Job Type DRILLING/COMPLETION - ORIGINAL			Zone CODELL, ORIGINAL HOLE
Technical Result Success		Tech Result Details According to Plan		Tech Result Note	
Comment (CODELL NEW DRILL): TREATMENT WENT WELL NO ISSUES TO REPORT					
Interval... 2	Start Date 1/8/2008	Primary Job Type DRILLING/COMPLETION - ORIGINAL			Zone NIOBRARA, ORIGINAL HOLE
Technical Result Success		Tech Result Details According to Plan		Tech Result Note	
Comment (NIOBRARA) TREATMENT WENT WELL NO ISSUES TO REPORT					