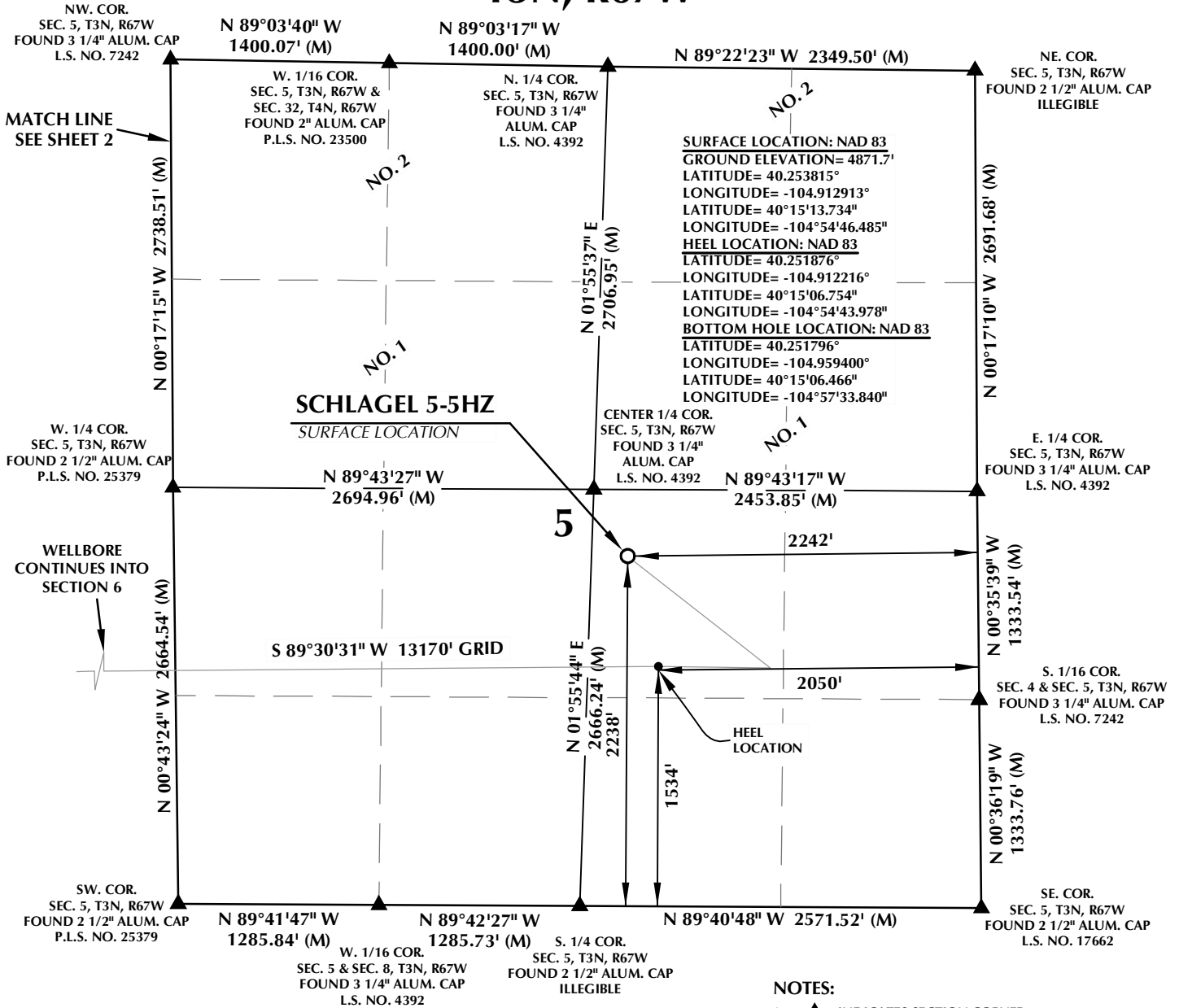


T3N, R67W



CERTIFICATE OF SURVEYOR:

THIS IS TO CERTIFY THAT THE ABOVE PLAT WAS PREPARED FROM FIELD NOTES OF ACTUAL SURVEYS MADE BY ME OR UNDER MY SUPERVISION AND THAT THE SAME ARE TRUE AND CORRECT TO THE BEST OF MY KNOWLEDGE AND BELIEF. THIS CERTIFICATE DOES NOT REPRESENT A LAND SURVEY PLAT OR IMPROVEMENT SURVEY PLAT AS DEFINED BY C.R.S. 38-51-102 AND CANNOT BE RELIED UPON TO DETERMINE OWNERSHIP.

Randall K. French
RANDALL K. FRENCH
 PROFESSIONAL LAND SURVEYOR
 COLORADO REGISTRATION NUMBER 38512
 10/8/21

NOTICE:
 ACCORDING TO COLORADO STATE LAW YOU MUST COMMENCE LEGAL ACTION BASED UPON ANY DEFECT IN THIS SURVEY WITHIN THREE YEARS AFTER YOU FIRST DISCOVER SUCH DEFECT. IN NO EVENT MAY ANY ACTION BASED UPON ANY DEFECT IN THIS SURVEY BE COMMENCED MORE THAN TEN YEARS FROM THE DATE ON THE CERTIFICATION SHOWN HEREON.

NOTES:

- ▲ INDICATES SECTION CORNER.
- ⊙ INDICATES CALCULATED CORNER.
- DRAWING LATITUDE AND LONGITUDE COORDINATES ARE NAD 83 (2011)(EPOCH:2010).
- ELEVATION BASED ON NAVD88 (GEOID12B).
- BASIS OF BEARING DERIVED FROM COLORADO COORDINATE SYSTEM OF 1983, NORTH ZONE.
- ALL MEASURED DISTANCES ARE GRID.
COMBINED SCALE FACTOR: .99972640 CALCULATED FROM THE CENTER 1/4 CORNER OF SECTION 5, T3N, R67W.
- OPERATOR: TRAVIS HOLLAND / PDOP = 1.4.
- SEE ADDENDUM TO WELL LOCATION CERTIFICATE FOR EXISTING IMPROVEMENTS WITHIN 500' OF THE WELL PAD.
- WELL FOOTAGES ARE MEASURED AT RIGHT ANGLES TO THE SECTION LINES.
- THE BOTTOM OF HOLE BEARS S89°30'31"W, 13170' FROM THE HEEL LOCATION.

WELL PAD - SCHLAGEL 10-5HZ

SCHLAGEL 5-5HZ
 WELL LOCATION CERTIFICATE
 2238' FSL & 2242' FEL (NWSE) (SURFACE)
 1534' FSL & 2050' FEL (NWSE) (HEEL)
 LOCATED IN SECTION 5
 T3N, R67W, 6TH P.M.
 1366' FSL & 385' FWL (NWSW) (BOTTOM)
 LOCATED IN SECTION 1
 T3N, R68W, 6TH P.M.
 WELD COUNTY, COLORADO

**Kerr-McGee Oil &
 Gas Onshore L.P.**
 1099 18th Street
 Denver, Colorado 80202



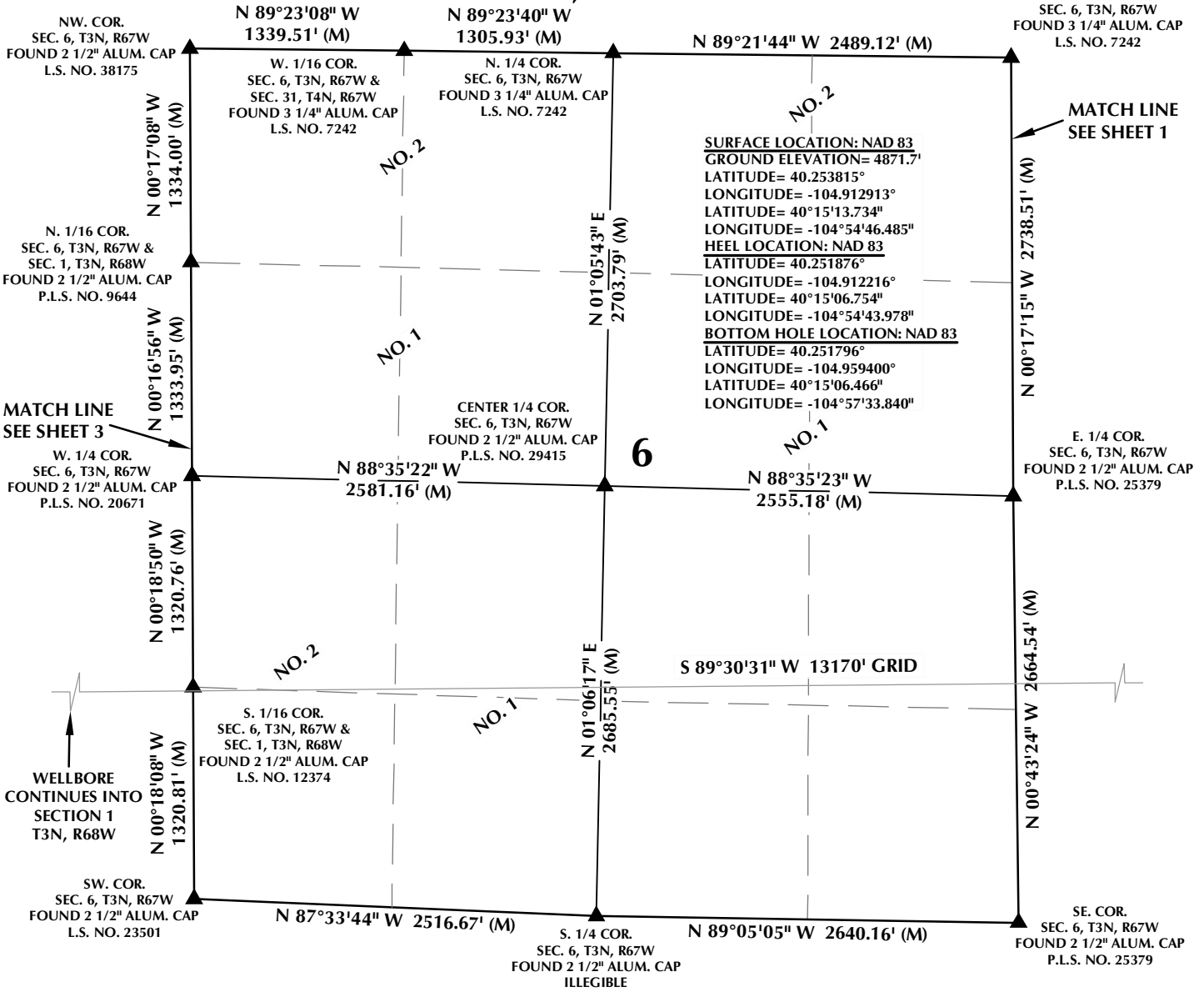
CONSULTING, LLC

SHERIDAN OFFICE
 1095 Saberton Avenue
 Sheridan, Wyoming 82801
 Phone 307-674-0609

LOVELAND OFFICE
 6706 North Franklin Avenue
 Loveland, Colorado 80538
 Phone 970-776-4331

DRAFTED BY: SJM	CHECKED BY: RKF	SHEET NO: 1
DATE DRAFTED: 6/11/2020	DATE SURVEYED: 5/5/2020	1
REVISED: 10/8/21	FILE NAME: 19-78	1 OF 3

T3N, R67W



CERTIFICATE OF SURVEYOR:

THIS IS TO CERTIFY THAT THE ABOVE PLAT WAS PREPARED FROM FIELD NOTES OF ACTUAL SURVEYS MADE BY ME OR UNDER MY SUPERVISION AND THAT THE SAME ARE TRUE AND CORRECT TO THE BEST OF MY KNOWLEDGE AND BELIEF. THIS CERTIFICATE DOES NOT REPRESENT A LAND SURVEY PLAT OR IMPROVEMENT SURVEY PLAT AS DEFINED BY C.R.S. 38-51-102 AND CANNOT BE RELIED UPON TO DETERMINE OWNERSHIP.

Randall K. French
PROFESSIONAL LAND SURVEYOR
 38512
 10/8/21

RANDALL K. FRENCH
 PROFESSIONAL LAND SURVEYOR
 COLORADO REGISTRATION NUMBER 38512

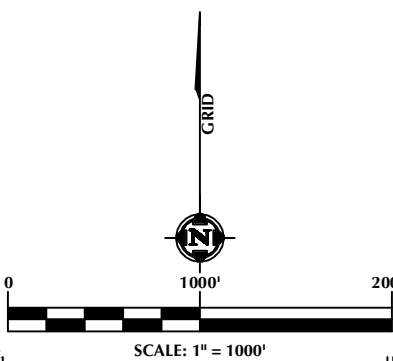
NOTICE: ACCORDING TO COLORADO STATE LAW YOU MUST COMMENCE LEGAL ACTION BASED UPON ANY DEFECT IN THIS SURVEY WITHIN THREE YEARS AFTER YOU FIRST DISCOVER SUCH DEFECT. IN NO EVENT MAY ANY ACTION BASED UPON ANY DEFECT IN THIS SURVEY BE COMMENCED MORE THAN TEN YEARS FROM THE DATE ON THE CERTIFICATION SHOWN HEREON.

NOTES:

- ▲ INDICATES SECTION CORNER.
- INDICATES CALCULATED CORNER.
- DRAWING LATITUDE AND LONGITUDE COORDINATES ARE NAD 83 (2011)(EPOCH:2010).
- ELEVATION BASED ON NAVD88 (GEOID12B).
- BASIS OF BEARING DERIVED FROM COLORADO COORDINATE SYSTEM OF 1983, NORTH ZONE.
- ALL MEASURED DISTANCES ARE GRID.
COMBINED SCALE FACTOR: .99972640 CALCULATED FROM THE CENTER 1/4 CORNER OF SECTION 5, T3N, R67W.
- OPERATOR: TRAVIS HOLLAND / PDOP = 1.4.
- SEE ADDENDUM TO WELL LOCATION CERTIFICATE FOR EXISTING IMPROVEMENTS WITHIN 500' OF THE WELL PAD.
- WELL FOOTAGES ARE MEASURED AT RIGHT ANGLES TO THE SECTION LINES.
- THE BOTTOM OF HOLE BEARS S89°30'31"W, 13170' FROM THE HEEL LOCATION.

WELL PAD - SCHLAGEL 10-5HZ

SCHLAGEL 5-5HZ
 WELL LOCATION CERTIFICATE
 2238' FSL & 2242' FEL (NWSE) (SURFACE)
 1534' FSL & 2050' FEL (NWSE) (HEEL)
 LOCATED IN SECTION 5
 T3N, R67W, 6TH P.M.
 1366' FSL & 385' FWL (NWSW) (BOTTOM)
 LOCATED IN SECTION 1
 T3N, R68W, 6TH P.M.
 WELD COUNTY, COLORADO



Kerr-McGee Oil & Gas Onshore L.P.
 1099 18th Street
 Denver, Colorado 80202

609 CONSULTING, LLC

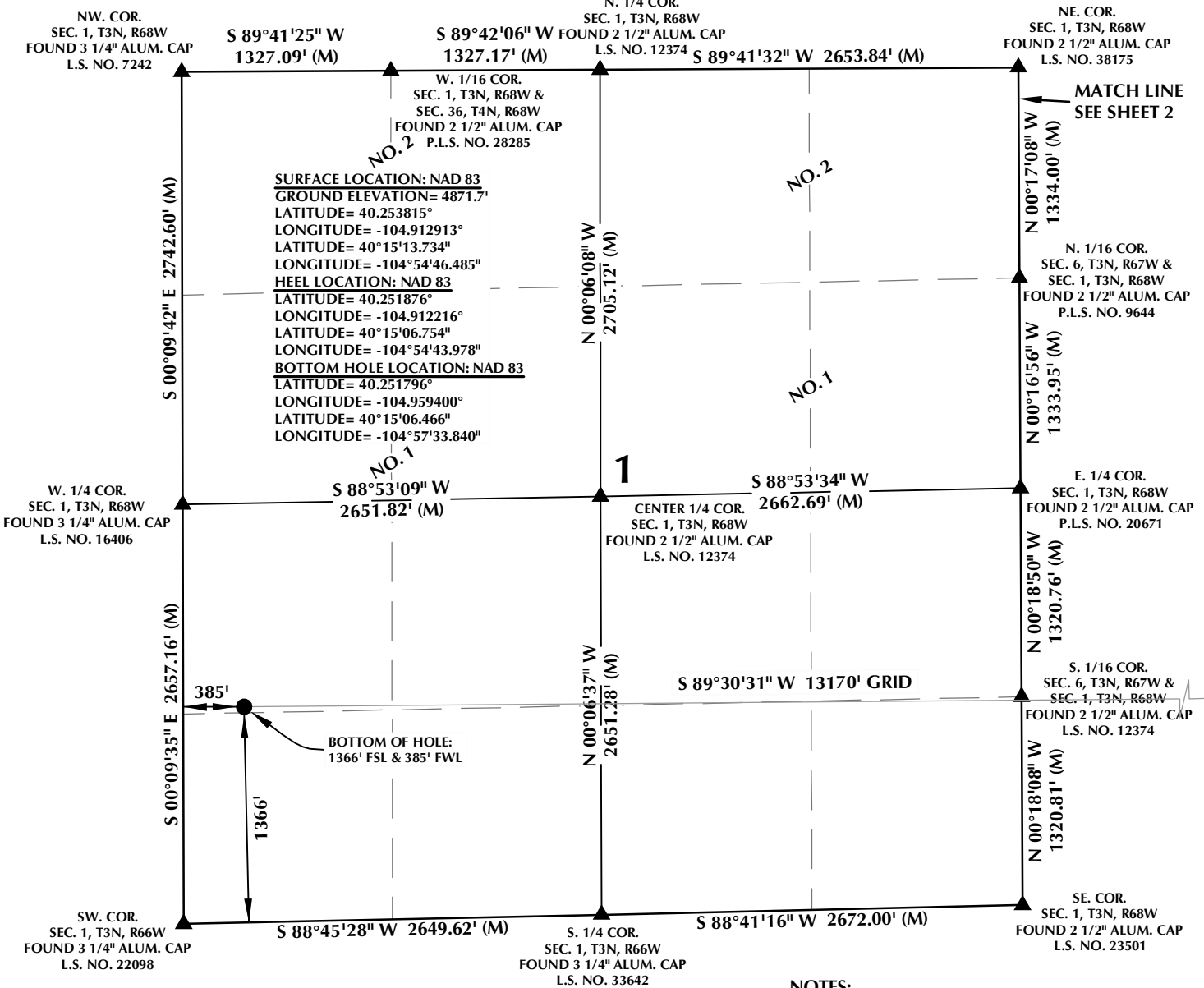
SHERIDAN OFFICE
 1095 Saberton Avenue
 Sheridan, Wyoming 82801
 Phone 307-674-0609

LOVELAND OFFICE
 6706 North Franklin Avenue
 Loveland, Colorado 80538
 Phone 970-776-4331

DRAFTED BY: SJM	CHECKED BY: RKF	SHEET NO: 2 2 OF 3
DATE DRAFTED: 6/11/2020	DATE SURVEYED: 5/5/2020	
REVISED: 10/8/21	FILE NAME: 19-78	

K:\ANADARKO\2019\19_78_SCHLAGEL_T3N_R67W_SEC_5\PLATS\SCHLAGEL_PLAT.dwg, 10/7/2021 11:43:44 AM, smuel

T3N, R68W

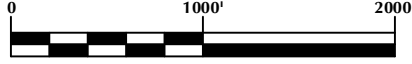
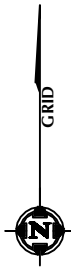


CERTIFICATE OF SURVEYOR:

THIS IS TO CERTIFY THAT THE ABOVE PLAT WAS PREPARED FROM FIELD NOTES OF ACTUAL SURVEY MADE BY ME OR UNDER MY SUPERVISION AND TO THE SAME DATE AND CORRECT TO THE BEST OF MY KNOWLEDGE AND BELIEF. THIS CERTIFICATE DOES NOT REPRESENT A LAND SURVEY PLAT OR IMPROVEMENT SURVEY PLAT AS DEFINED BY C.R.S. 38-51-102 AND CANNOT BE RELIED UPON TO DETERMINE OWNERSHIP.

Randall K. French
 RANDALL K. FRENCH
 PROFESSIONAL LAND SURVEYOR
 COLORADO REGISTRATION NUMBER 38512
 10/8/21

NOTICE:
 ACCORDING TO COLORADO STATE LAW YOU MUST COMMENCE LEGAL ACTION BASED UPON ANY DEFECT IN THIS SURVEY WITHIN THREE YEARS AFTER YOU FIRST DISCOVER SUCH DEFECT. IN NO EVENT MAY ANY ACTION BASED UPON ANY DEFECT IN THIS SURVEY BE COMMENCED MORE THAN TEN YEARS FROM THE DATE ON THE CERTIFICATION SHOWN HEREON.



SCALE: 1" = 1000'

NOTES:

- ▲ INDICATES SECTION CORNER.
- INDICATES CALCULATED CORNER.
- DRAWING LATITUDE AND LONGITUDE COORDINATES ARE NAD 83 (2011)(EPOCH:2010).
- ELEVATION BASED ON NAVD88 (GEOID12B).
- BASIS OF BEARING DERIVED FROM COLORADO COORDINATE SYSTEM OF 1983, NORTH ZONE.
- ALL MEASURED DISTANCES ARE GRID.
COMBINED SCALE FACTOR: .99972640 CALCULATED FROM THE CENTER 1/4 CORNER OF SECTION 5, T3N, R67W.
- OPERATOR: TRAVIS HOLLAND / PDOP = 1.4.
- SEE ADDENDUM TO WELL LOCATION CERTIFICATE FOR EXISTING IMPROVEMENTS WITHIN 500' OF THE WELL PAD.
- WELL FOOTAGES ARE MEASURED AT RIGHT ANGLES TO THE SECTION LINES.
- THE BOTTOM OF HOLE BEARS S89°30'31"W, 13170' FROM THE HEEL LOCATION.

WELL PAD - SCHLAGEL 10-5HZ

SCHLAGEL 5-5HZ
 WELL LOCATION CERTIFICATE
 2238' FSL & 2242' FEL (NWSE) (SURFACE)
 1534' FSL & 2050' FEL (NWSE) (HEEL)
 LOCATED IN SECTION 5
 T3N, R67W, 6TH P.M.
 1366' FSL & 385' FWL (NWSW) (BOTTOM)
 LOCATED IN SECTION 1
 T3N, R68W, 6TH P.M.
 WELD COUNTY, COLORADO

**Kerr-McGee Oil &
 Gas Onshore L.P.**
 1099 18th Street
 Denver, Colorado 80202



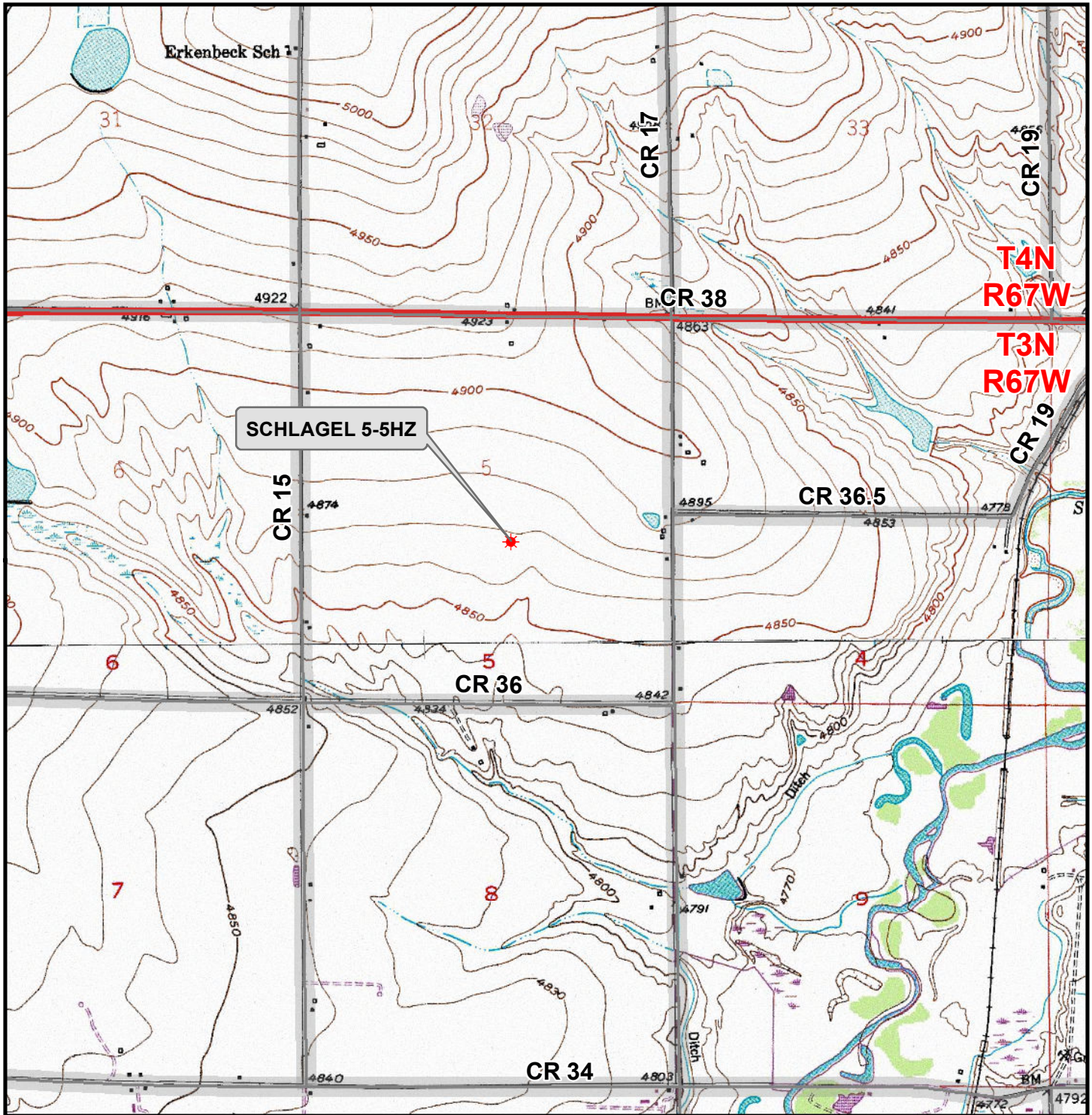
CONSULTING, LLC

SHERIDAN OFFICE
 1095 Saberton Avenue
 Sheridan, Wyoming 82801
 Phone 307-674-0609

LOVELAND OFFICE
 6706 North Franklin Avenue
 Loveland, Colorado 80538
 Phone 970-776-4331

DRAFTED BY: SJM	CHECKED BY: RKF	SHEET NO: 3 3 OF 3
DATE DRAFTED: 6/11/2020	DATE SURVEYED: 5/5/2020	
REVISED: 10/8/21	FILE NAME: 19-78	

K:\ANADARKO\2019\2019_78_SCHLAGEL_T3N_R67W_SEC_5\GIS\Maps_ABC\SCHLAGEL_10-5HZ\SCHLAGEL_5-5HZ.mxd 6/8/2020 10:46:52 AM



Legend

- ★ Well - Proposed
- ==== Road - Primitive - Existing
- Road - County - Existing
- Road - Improved - Existing
- Road - Highway - Existing

WELL PAD - SCHLAGEL 10-5HZ
GENERAL LOCATION MAP
SCHLAGEL 5-5HZ
LOCATED IN SECTION 5
T3N, R67W, 6th P.M.
WELD COUNTY, COLORADO

Kerr-McGee Oil & Gas Onshore L.P.
 1099 18th Street
 Denver, Colorado 80202



CONSULTING, LLC
 SHERIDAN OFFICE
 1095 Saberton Avenue
 Sheridan, Wyoming 82801
 Phone 307-674-0609
 LOVELAND OFFICE
 6706 North Franklin Avenue
 Loveland, Colorado 80538
 Phone 970-776-4331



SCALE: 1" = 2,000ft	NAD83 CO-Nft
DRAWN: DP	DATE: 11 Jun 2020
REVISED:	DATE: