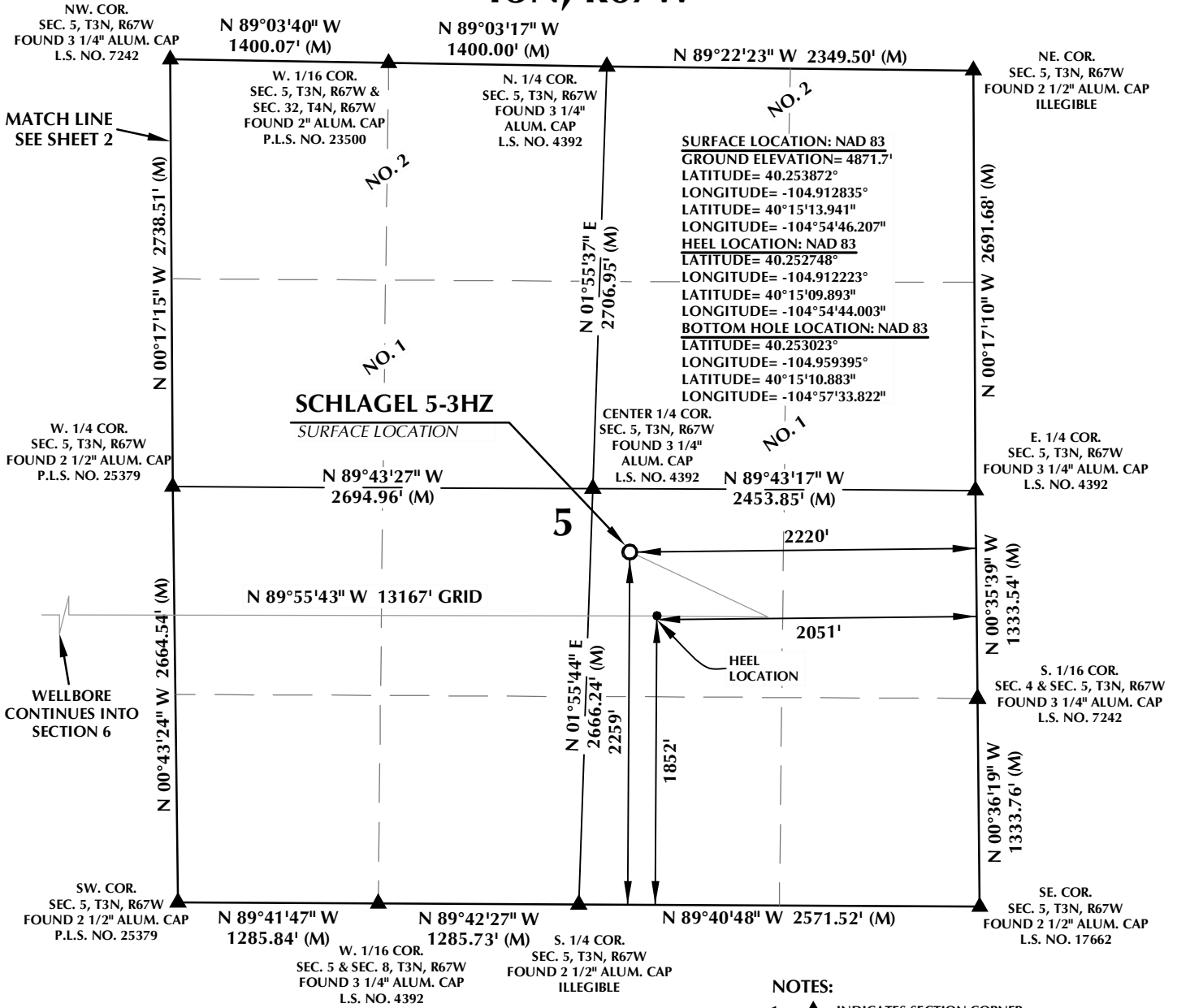


# T3N, R67W



**CERTIFICATE OF SURVEYOR:**

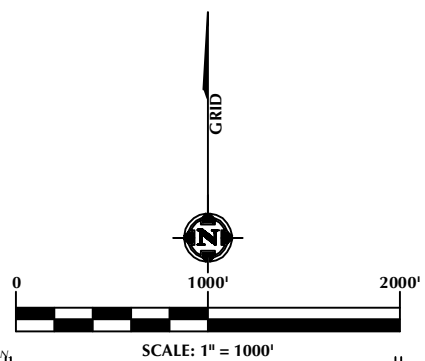
THIS IS TO CERTIFY THAT THE ABOVE PLAT WAS PREPARED FROM FIELD NOTES OF ACTUAL SURVEYS MADE BY ME OR UNDER MY SUPERVISION AND THAT THE SAME ARE TRUE AND CORRECT TO THE BEST OF MY KNOWLEDGE AND BELIEF. THIS CERTIFICATE DOES NOT REPRESENT A LAND SURVEY PLAT OR IMPROVEMENT SURVEY PLAT AS DEFINED BY C.R.S. 38-51-102 AND CANNOT BE RELIED UPON TO DETERMINE OWNERSHIP.

*Randall K. French*  
 RANDALL K. FRENCH  
 PROFESSIONAL LAND SURVEYOR  
 COLORADO REGISTRATION NUMBER 38512  
 10/26/21

**NOTICE:**  
 ACCORDING TO COLORADO STATE LAW YOU MUST COMMENCE LEGAL ACTION BASED UPON ANY DEFECT IN THIS SURVEY WITHIN THREE YEARS AFTER YOU FIRST DISCOVER SUCH DEFECT. IN NO EVENT MAY ANY ACTION BASED UPON ANY DEFECT IN THIS SURVEY BE COMMENCED MORE THAN TEN YEARS FROM THE DATE ON THE CERTIFICATION SHOWN HEREON.

**NOTES:**

- ▲ INDICATES SECTION CORNER.
- INDICATES CALCULATED CORNER.
- DRAWING LATITUDE AND LONGITUDE COORDINATES ARE NAD 83 (2011)(EPOCH:2010).
- ELEVATION BASED ON NAVD88 (GEOID12B).
- BASIS OF BEARING DERIVED FROM COLORADO COORDINATE SYSTEM OF 1983, NORTH ZONE.
- ALL MEASURED DISTANCES ARE GRID.  
 COMBINED SCALE FACTOR: .99972640 CALCULATED FROM THE CENTER 1/4 CORNER OF SECTION 5, T3N, R67W.
- OPERATOR: TRAVIS HOLLAND / PDOP = 1.6.
- SEE ADDENDUM TO WELL LOCATION CERTIFICATE FOR EXISTING IMPROVEMENTS WITHIN 500' OF THE WELL PAD.
- WELL FOOTAGES ARE MEASURED AT RIGHT ANGLES TO THE SECTION LINES.
- THE BOTTOM OF HOLE BEARS N89°55'43"W, 13167' FROM THE HEEL LOCATION.



**WELL PAD - SCHLAGEL 10-5HZ**

SCHLAGEL 5-3HZ  
 WELL LOCATION CERTIFICATE  
 2259' FSL & 2220' FEL (NWSE) (SURFACE)  
 1852' FSL & 2051' FEL (NWSE) (HEEL)  
 LOCATED IN SECTION 5  
 T3N, R67W, 6TH P.M.  
 1813' FSL & 385' FWL (NWSW) (BOTTOM)  
 LOCATED IN SECTION 1  
 T3N, R68W, 6TH P.M.  
 WELD COUNTY, COLORADO

**Kerr-McGee Oil & Gas Onshore L.P.**  
 1099 18th Street  
 Denver, Colorado 80202



**CONSULTING, LLC**

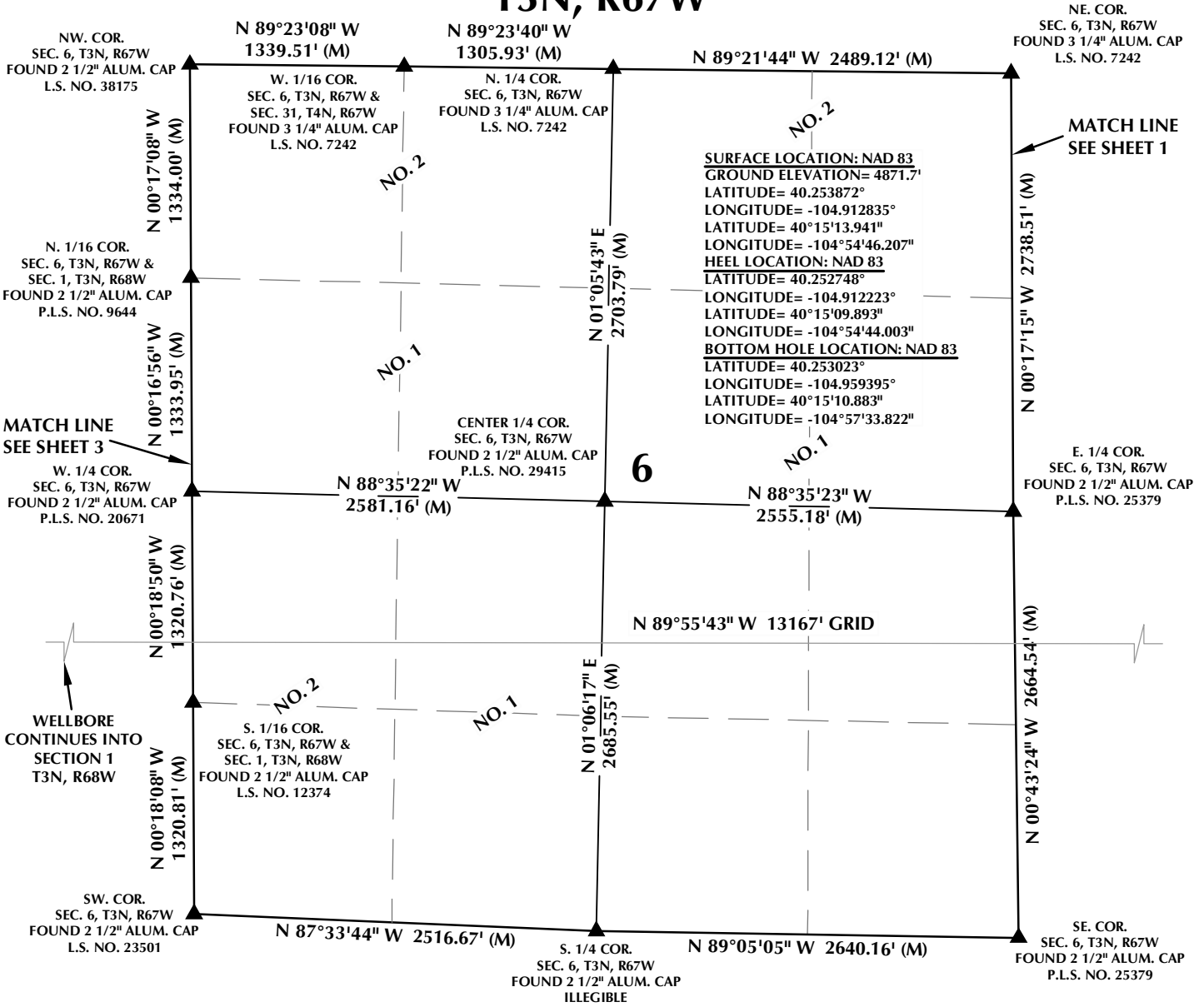
SHERIDAN OFFICE  
 1095 Saberton Avenue  
 Sheridan, Wyoming 82801  
 Phone 307-674-0609

LOVELAND OFFICE  
 6706 North Franklin Avenue  
 Loveland, Colorado 80538  
 Phone 970-776-4331

DRAFTED BY: SJM	CHECKED BY: RKF	SHEET NO: <b>1</b> 1 OF 3
DATE DRAFTED: 6/11/2020	DATE SURVEYED: 5/5/2020	
REVISED: 10/26/21	FILE NAME: 19-78	

K:\MADARKO\2019\2019\_78\_SCHLAGEL\_T3N\_R67W\_SEC\_5\PLATS\SCHLAGEL\_PLAT.dwg, 10/26/2021 10:17:36 AM, shewen

# T3N, R67W



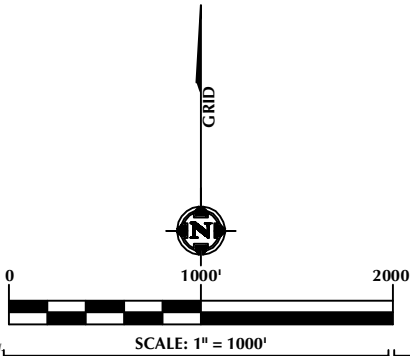
### CERTIFICATE OF SURVEYOR:

THIS IS TO CERTIFY THAT THE ABOVE PLAT WAS PREPARED FROM FIELD NOTES OF ACTUAL SURVEYS MADE BY ME OR UNDER MY SUPERVISION AND THAT THE SAME ARE TRUE AND CORRECT TO THE BEST OF MY KNOWLEDGE AND BELIEF. THIS CERTIFICATE DOES NOT REPRESENT A LAND SURVEY PLAT OR IMPROVEMENT SURVEY PLAT AS DEFINED BY C.R.S. 38-51-102 AND CANNOT BE RELIED UPON TO DETERMINE OWNERSHIP.

*Randall K. French*  
 RANDALL K. FRENCH  
 PROFESSIONAL LAND SURVEYOR  
 COLORADO REGISTRATION NUMBER 38512

10/26/21

NOTICE: ACCORDING TO COLORADO STATE LAW YOU MUST COMMENCE LEGAL ACTION BASED UPON ANY DEFECT IN THIS SURVEY WITHIN THREE YEARS AFTER YOU FIRST DISCOVER SUCH DEFECT. IN NO EVENT MAY ANY ACTION BASED UPON ANY DEFECT IN THIS SURVEY BE COMMENCED MORE THAN TEN YEARS FROM THE DATE ON THE CERTIFICATION SHOWN HEREON.



### NOTES:

- ▲ INDICATES SECTION CORNER.
- INDICATES CALCULATED CORNER.
- DRAWING LATITUDE AND LONGITUDE COORDINATES ARE NAD 83 (2011)(EPOCH:2010).
- ELEVATION BASED ON NAVD88 (GEOID12B).
- BASIS OF BEARING DERIVED FROM COLORADO COORDINATE SYSTEM OF 1983, NORTH ZONE.
- ALL MEASURED DISTANCES ARE GRID.
- COMBINED SCALE FACTOR: .99972640 CALCULATED FROM THE CENTER 1/4 CORNER OF SECTION 5, T3N, R67W.
- OPERATOR: TRAVIS HOLLAND / PDOP = 1.6.
- SEE ADDENDUM TO WELL LOCATION CERTIFICATE FOR EXISTING IMPROVEMENTS WITHIN 500' OF THE WELL PAD.
- WELL FOOTAGES ARE MEASURED AT RIGHT ANGLES TO THE SECTION LINES.
- THE BOTTOM OF HOLE BEARS N89°55'43"W, 13167' FROM THE HEEL LOCATION.

### WELL PAD - SCHLAGEL 10-5HZ

SCHLAGEL 5-3HZ  
 WELL LOCATION CERTIFICATE  
 2259' FSL & 2220' FEL (NWSE) (SURFACE)  
 1852' FSL & 2051' FEL (NWSE) (HEEL)  
 LOCATED IN SECTION 5  
 T3N, R67W, 6TH P.M.  
 1813' FSL & 385' FWL (NWSW) (BOTTOM)  
 LOCATED IN SECTION 1  
 T3N, R68W, 6TH P.M.  
 WELD COUNTY, COLORADO

**Kerr-McGee Oil &  
 Gas Onshore L.P.**  
 1099 18th Street  
 Denver, Colorado 80202



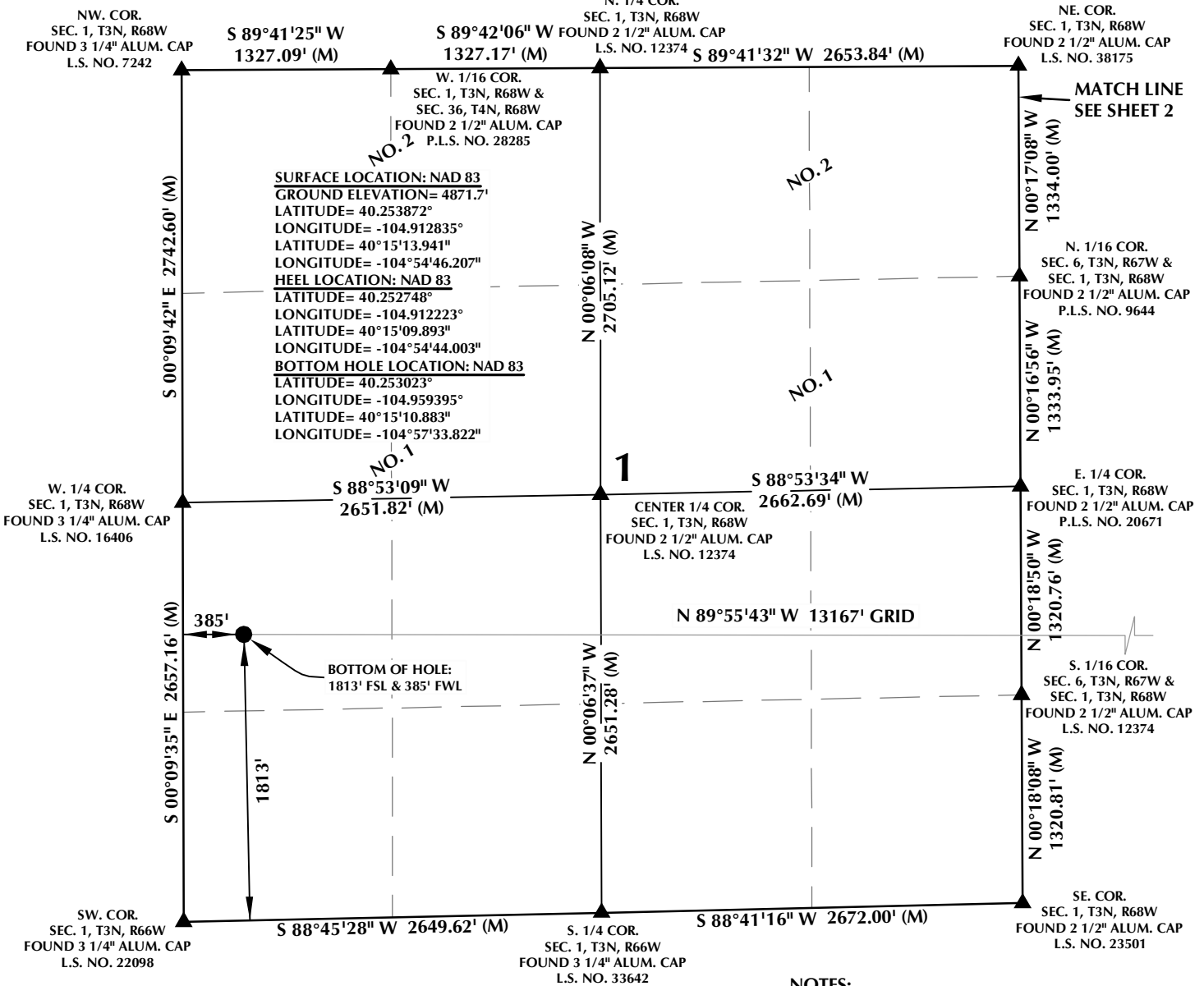
### CONSULTING, LLC

SHERIDAN OFFICE  
 1095 Saberton Avenue  
 Sheridan, Wyoming 82801  
 Phone 307-674-0609

LOVELAND OFFICE  
 6706 North Franklin Avenue  
 Loveland, Colorado 80538  
 Phone 970-776-4331

DRAFTED BY: SJM	CHECKED BY: RKF	SHEET NO: <b>2</b> 2 OF 3
DATE DRAFTED: 6/11/2020	DATE SURVEYED: 5/5/2020	
REVISED: 10/26/21	FILE NAME: 19-78	

# T3N, R68W



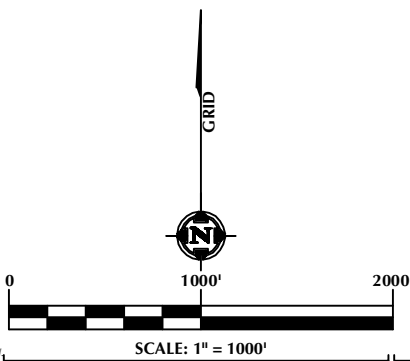
## CERTIFICATE OF SURVEYOR:

THIS IS TO CERTIFY THAT THE ABOVE PLAT WAS PREPARED FROM FIELD NOTES OF ACTUAL SURVEY MADE BY ME OR UNDER MY SUPERVISION AND THAT THE SAME ARE TRUE AND CORRECT TO THE BEST OF MY KNOWLEDGE AND BELIEF. THIS CERTIFICATE DOES NOT REPRESENT A LAND SURVEY PLAT OR IMPROVEMENT SURVEY PLAT AS DEFINED BY C.R.S. 38-51-102 AND CANNOT BE RELIED UPON TO DETERMINE OWNERSHIP.

*Randall K. French*  
 RANDALL K. FRENCH  
 PROFESSIONAL LAND SURVEYOR  
 COLORADO REGISTRATION NUMBER 38512

10/26/21

NOTICE:  
 ACCORDING TO COLORADO STATE LAW YOU MUST COMMENCE LEGAL ACTION BASED UPON ANY DEFECT IN THIS SURVEY WITHIN THREE YEARS AFTER YOU FIRST DISCOVER SUCH DEFECT. IN NO EVENT MAY ANY ACTION BASED UPON ANY DEFECT IN THIS SURVEY BE COMMENCED MORE THAN TEN YEARS FROM THE DATE ON THE CERTIFICATION SHOWN HEREON.



## NOTES:

- ▲ INDICATES SECTION CORNER.
- INDICATES CALCULATED CORNER.
- DRAWING LATITUDE AND LONGITUDE COORDINATES ARE NAD 83 (2011)(EPOCH:2010).
- ELEVATION BASED ON NAVD88 (GEOID12B).
- BASIS OF BEARING DERIVED FROM COLORADO COORDINATE SYSTEM OF 1983, NORTH ZONE.
- ALL MEASURED DISTANCES ARE GRID.  
 COMBINED SCALE FACTOR: .99972640 CALCULATED FROM THE CENTER 1/4 CORNER OF SECTION 5, T3N, R67W.
- OPERATOR: TRAVIS HOLLAND / PDOP = 1.6.
- SEE ADDENDUM TO WELL LOCATION CERTIFICATE FOR EXISTING IMPROVEMENTS WITHIN 500' OF THE WELL PAD.
- WELL FOOTAGES ARE MEASURED AT RIGHT ANGLES TO THE SECTION LINES.
- THE BOTTOM OF HOLE BEARS N89°55'43"W, 13167' FROM THE HEEL LOCATION.

## WELL PAD - SCHLAGEL 10-5HZ

SCHLAGEL 5-3HZ  
 WELL LOCATION CERTIFICATE  
 2259' FSL & 2220' FEL (NWSE) (SURFACE)  
 1852' FSL & 2051' FEL (NWSE) (HEEL)  
 LOCATED IN SECTION 5  
 T3N, R67W, 6TH P.M.  
 1813' FSL & 385' FWL (NWSW) (BOTTOM)  
 LOCATED IN SECTION 1  
 T3N, R68W, 6TH P.M.  
 WELD COUNTY, COLORADO

**Kerr-McGee Oil &  
 Gas Onshore L.P.**  
 1099 18th Street  
 Denver, Colorado 80202



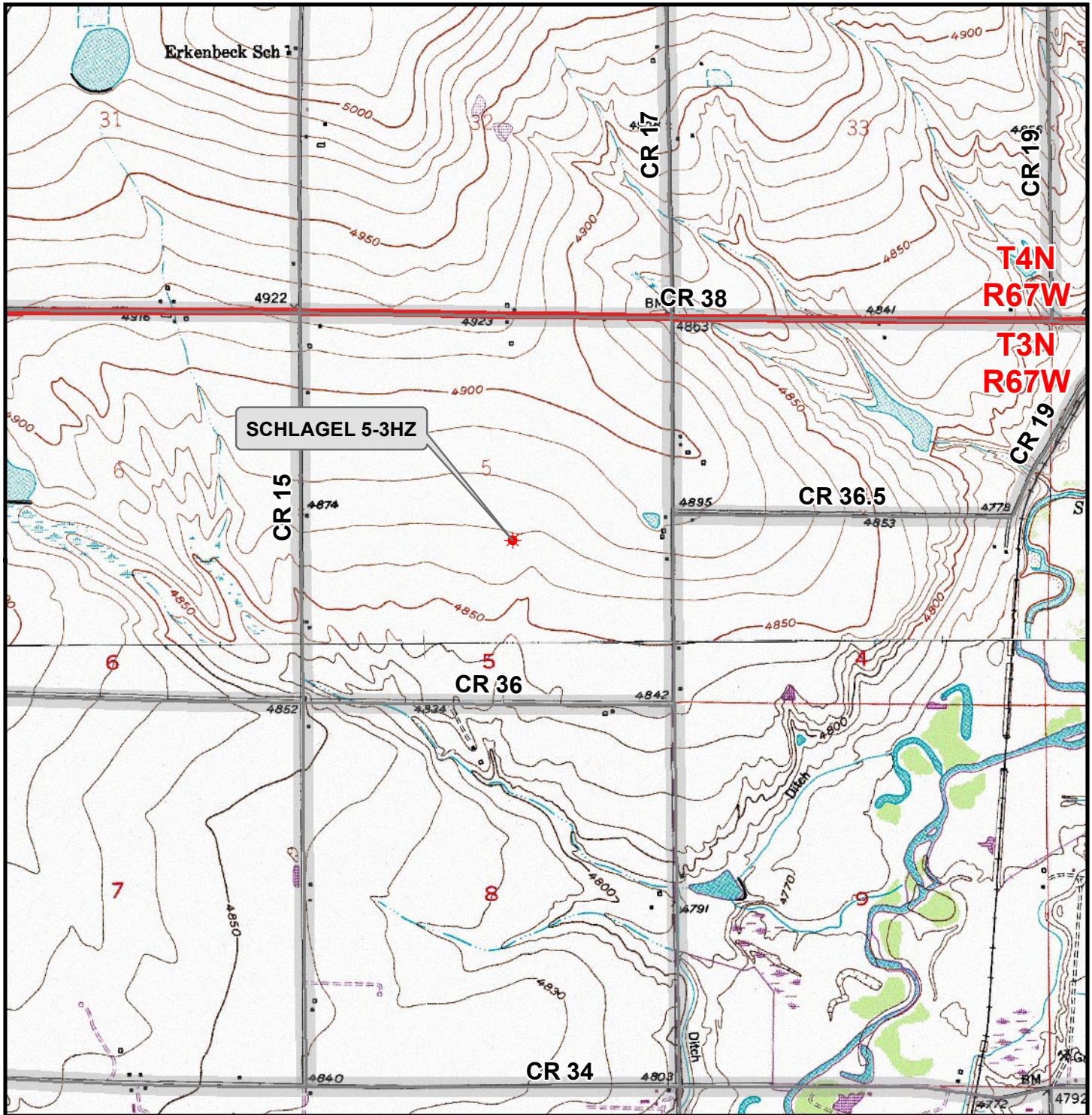
## CONSULTING, LLC

SHERIDAN OFFICE  
 1095 Saberton Avenue  
 Sheridan, Wyoming 82801  
 Phone 307-674-0609

LOVELAND OFFICE  
 6706 North Franklin Avenue  
 Loveland, Colorado 80538  
 Phone 970-776-4331

DRAFTED BY:	SJM	CHECKED BY:	RKF	SHEET NO:
DATE DRAFTED:	6/11/2020	DATE SURVEYED:	5/5/2020	<b>3</b>
REVISED:	10/26/21	FILE NAME:	19-78	3 OF 3

K:\ANADARKO\2019\2019\_78\_SCHLAGEL\_T3N\_R67W\_SEC\_5\GIS\Maps\_ABC\SCHLAGEL\_10-5HZ\SCHLAGEL\_5-3HZ.mxd 6/8/2020 10:47:24 AM



**T4N  
R67W**  
**T3N  
R67W**


**SCHLAGEL 5-3HZ**

**Legend**

- Well - Proposed
- Road - Primitive - Existing
- Road - Improved - Existing
- Road - County - Existing
- Road - Highway - Existing

**WELL PAD - SCHLAGEL 10-5HZ**  
**GENERAL LOCATION MAP**  
**SCHLAGEL 5-3HZ**  
**LOCATED IN SECTION 5**  
**T3N, R67W, 6th P.M.**  
**WELD COUNTY, COLORADO**

**Kerr-McGee Oil &  
Gas Onshore L.P.**  
  
1099 18th Street  
Denver, Colorado 80202




**609**

**CONSULTING, LLC**

**SHERIDAN OFFICE**  
1095 Saberton Avenue  
Sheridan, Wyoming 82801  
Phone 307-674-0609

**LOVELAND OFFICE**  
6706 North Franklin Avenue  
Loveland, Colorado 80538  
Phone 970-776-4331



SCALE: 1" = 2,000ft	NAD83 CO-Nft
DRAWN: DP	DATE: 11 Jun 2020
REVISED:	DATE: