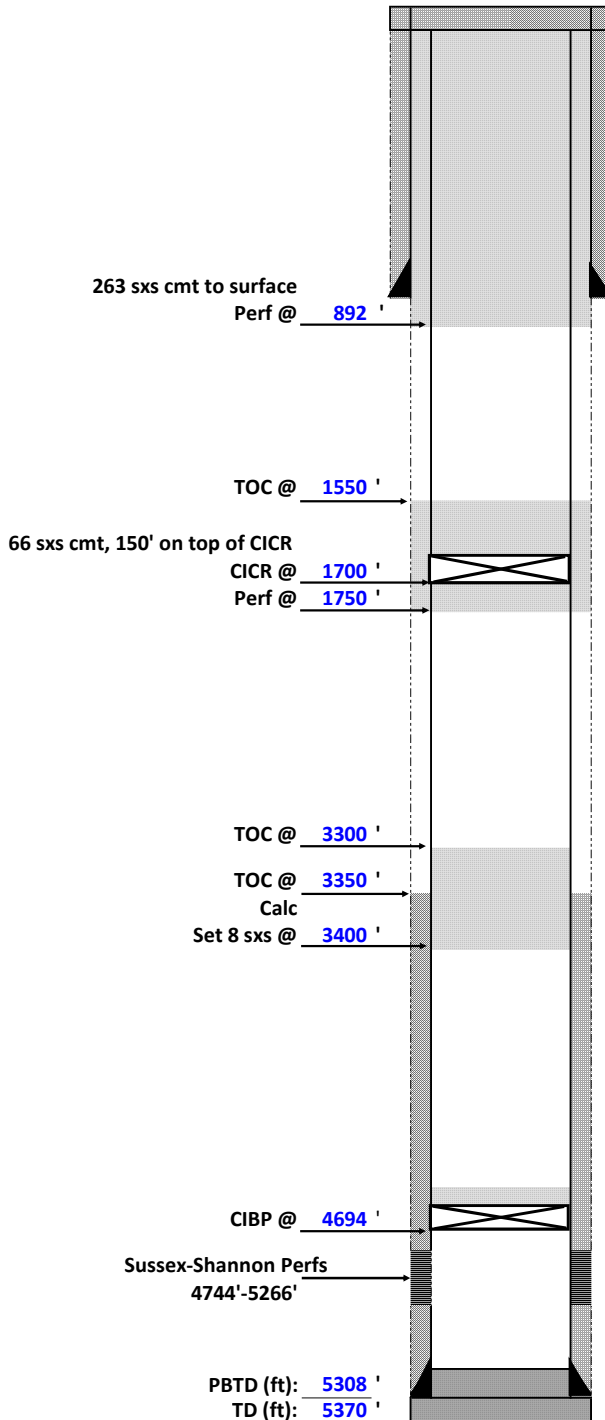


OPERATOR: K.P. Kauffman Compnay Inc.  
WELL: UPRR 43 Pan Am I #33  
FIELD: Wattenberg  
API # 05-123-09978  
LEASE #: \_\_\_\_\_  
UIC #: \_\_\_\_\_

CNTY: Weld FTG: \_\_\_\_\_  
STATE: CO Q-Q: NESW  
SPUD: 7/18/1980 SEC.: 10  
COMP: 3/22/1981 TWS: 1N  
STATUS: PR RGE: 68W  
WBD DATE: 2/28/2022 BY: \_\_\_\_\_

### PROPOSED WELLBORE DIAGRAM



#### CASING RECORD

HOLE (in)	SIZE (in)	WT (lb/ft)	GRADE	TOP (ft)	BTM (ft)
12 1/2	8 5/8	24		0	842
7 7/8	4 1/2	10.5		0	5370

#### TUBING RECORD

SIZE (in)	WT (lb/ft)	GRADE	TOP (ft)	TALLY (ft)	JTS

#### PERFORATION RECORD

ZONE	TOP (ft)	BTM (ft)	HOLES
SX-SN	4744	5266	240

#### WELLWORK HISTORY

##### Shannon

75600 gal gel oil x 39480 water - 192000# 10/20 sand  
and 36000# 20/40 sand - flush w/ 1050 gal water

##### Sussex

77952 gal oil x 40782 gal water - 192000# 20/40 sand  
and 36000# 10/20 sand - flush 2982 gal water