



HighPoint Operating Corporation

GRINDE 01-64-05-3225C

API # 05-123-49716

Production

January 04, 2020

Quote #:

Execution #:



HighPoint Operating Corporation

Attention: Mr. Matthew Schwartz | (303) 312-8142 | mschwartz@hpres.com

HighPoint Operating Corporation | 1099 18th St. | Denver, CO. 80202

Dear Mr. Matthew Schwartz,

Thank you for the opportunity to provide cementing services on this well. BJ Services strives to achieve complete customer satisfaction. If you have any questions regarding the services or data provided, please contact BJ Services at any time.

Sincerely,
Jason Creel
Field Engineer I | (307) 365-9038 | jason.creel@bjservices.com

Field Office 1716 East Allison Rd., Cheyenne WY, 82007
Phone: (307) 459-6487

Sales Office 999 18th St. Suite 1200 Denver, CO 80202
Phone: (281) 408-2361

BJ Cementing Treatment Report

SERVICE SUPERVISOR	Aldo Espinoza Galindo	RIG	Cade 23
CLIENT FIELD REPRESENTATIVE	Matt Schuartz	COUNTY	WELD
DISTRICT	Cheyenne, WY	STATE / PROVINCE	CO
SERVICE	Cementing		

WELL GEOMETRY

TYPE	ID (in)	OD (in)	WEIGHT (lb/ft)	MD (ft)	TVD (ft)	EXCESS (%)	GRADE
Previous Casing	6.37	7.00	23.00	7,458.00	7,050.00		J-55
Casing	4.00	4.50	11.60	17,145.00	7,050.00		P-110
Open Hole	6.13	0.00	0.00	17,167.00	7,050.00	10.00	

HARDWARE

Bottom Plug Used?	No	Tool Type	Float Collar
Top Plug Used?	Yes	Tool Depth (ft)	17,130.96
Top Plug Provided By	Non BJ	Max Casing Pressure - Rated (psi)	10690.00
Top Plug Size	4.500	Max Casing Pressure - Operated (psi)	2410.00
Centralizers Used	Yes	Pipe Movement	None
Centralizers Quantity	123.00	Job Pumped Through	No Manifold
Centralizers Type	Bow	Top Connection Thread	Itc
Landing Collar Depth (ft)	17,130	Top Connection Size	4.5

CIRCULATION PRIOR TO JOB

Well Circulated By	Rig	Mud Density In (ppg)	8.70
Circulation Prior to Job	Yes	PV Mud In	1
Circulation Time (min)	60.00	YP Mud In	3
Circulation Rate (bpm)	6.00	Solids Present at End of Circulation	No
Circulation Volume (bbls)	360.00	Flare Prior to / during the Cement Job	No
Lost Circulation Prior to Cement Job	No	Gas Present	No

TEMPERATURE

Ambient Temperature (°F)	23.00	Slurry Cement Temperature (°F)	60.00
Mix Water Temperature (°F)	60.00	Flow Line Temperature (°F)	65.00

FLUID DETAILS

FLUID TYPE	FLUID NAME	DENSITY (ppg)	YIELD (Cu Ft/sk)	H ₂ O REQ (gals/sk)	PLN TOP FLD (ft)	LENGTH (ft)	VOL (sk)	VOL (Cu Ft)	VOL (bbls)
Spacer / Pre Flush / Flush	Fresh Water	8.3300			1,470.00				40.0000
Tail Slurry	BJCem P50.6.01C	13.5000	1.5930	7.95	3,500.00	13,667.00	905	1442.0000	256.8000
Displacement 1	Retarded Water	8.3300			15,875.00			0.0000	20.0000
Displacement Final	Water + Chems	8.3300			0.00			0.0000	246.7000

FLUID TYPE	FLUID NAME	COMPONENT	CONCENTRATION	UOM
Tail Slurry	BJCem P50.6.01C	FLUID LOSS, FL-24	0.4000	BWOB
Tail Slurry	BJCem P50.6.01C	RETARDER, SR-20	0.2000	BWOB
Tail Slurry	BJCem P50.6.01C	Flyash (Rockies)	50.0000	PCT
Tail Slurry	BJCem P50.6.01C	IntegraCare EC-2	3.0000	BWOB
Tail Slurry	BJCem P50.6.01C	FOAM PREVENTER, FP-25	0.3000	BWOB
Tail Slurry	BJCem P50.6.01C	IntegraGuard GW-86	0.1000	BWOB
Tail Slurry	BJCem P50.6.01C	EXTENDER, BENTONITE	4.0000	BWOB
Tail Slurry	BJCem P50.6.01C	BONDING AGENT, BA-90	3.0000	LBS/SK
Tail Slurry	BJCem P50.6.01C	CEMENT, CLASS G	50.0000	PCT
Displacement Final	Water + Chems	BIOCIDE, BIOC11139W	0.0210	GPB
Displacement Final	Water + Chems	CORROSION INHIBITORS, CI-27	0.2100	GPB
Displacement Final	Water + Chems	OXYGEN SCAVENGER, OS-30	0.1680	GPB

DISPLACEMENT AND END OF JOB SUMMARY

Displaced By	BJ	Amt of Cement Returned / Reversed	0.00
Calculated Displacement Vol (bbls)	265.50	Method Used to Verify Returns	Visual
Actual Displacement Vol (bbls)	265.00	Amt of Spacer to Surface	0.00
Did Float Hold?	Yes	Pressure Left on Casing (psi)	0.00
Bump Plug	Yes	Amt Bled Back After Job	1.50
Bump Plug Pressure (psi)	2410.00	Total Volume Pumped (bbls)	562.50
Were Returns Planned at Surface	No	Top Out Cement Spotted	No
Cement Returns During Job	None	Lost Circulation During Cement Job	No

BJ Cementing Event Log

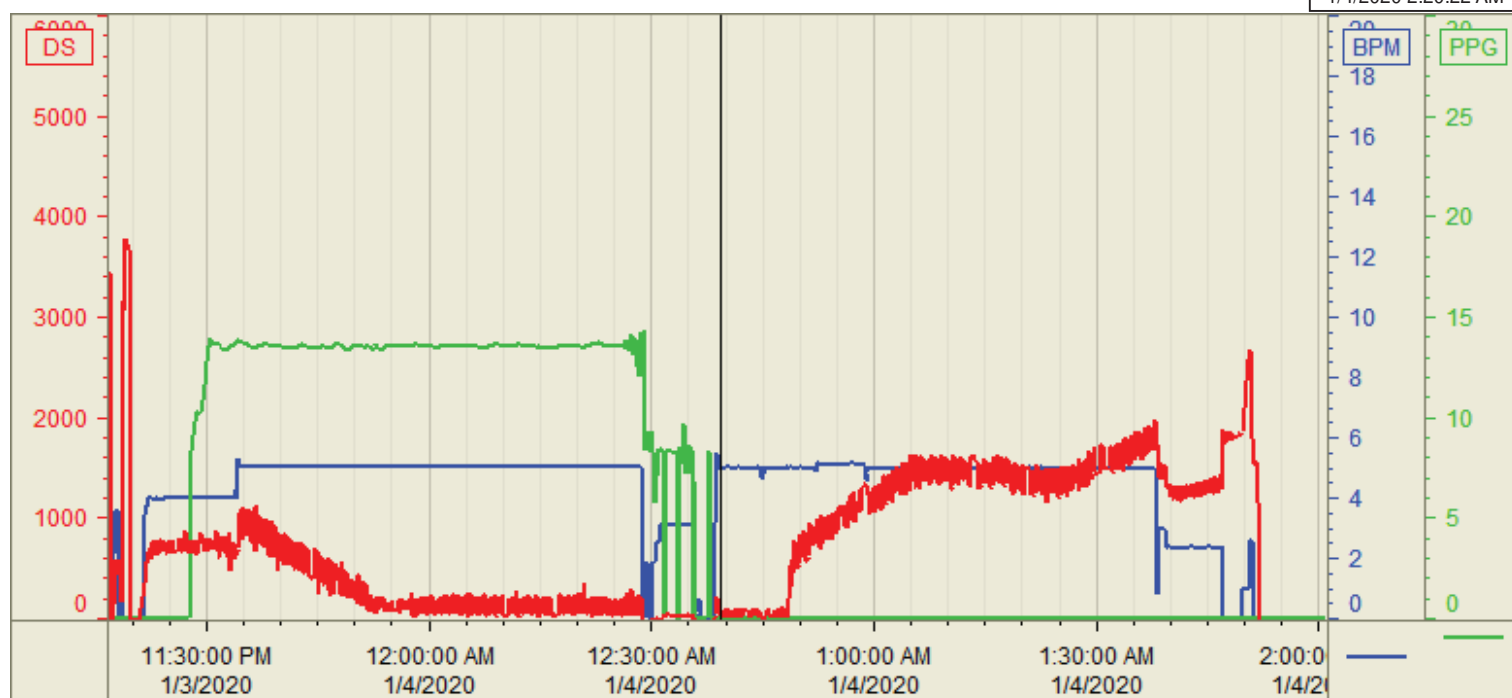
Long String - Cheyenne, WY - Aldo Espinoza Galindo

SEQ	START DATE / TIME	EVENT	DENSITY (ppg)	PUMP RATE (bpm)	PUMP VOL (bbls)	PIPE PRESSURE (psi)	COMMENTS
1	01/03/2020 13:30	Callout					Called out
2	01/03/2020 19:30	Arrive on Location					On location
3	01/03/2020 19:31	Rig Up					Rig up equipment
4	01/03/2020 20:30	Rig					Circulating bottoms up
5	01/03/2020 23:00	Other (See comment)					Safety meeting
6	01/03/2020 23:15	Pressure Test	8.3400	0.20	0.20	5000.00	Pressure test lines to 5000 psi
7	01/03/2020 23:20	Pump Spacer	8.3400	4.00	40.00	800.00	Pump 40 bbl of water spacer ahead of cement
8	01/03/2020 23:35	Pumping Cement	13.5000	4.00	256.80	400.00	Pump 905 sk/ 256.8 bbl/ slurry at 13.5#/ yield 1.59/ water 7.95
9	01/04/2020 00:35	Drop Top Plug					Drop lug and wash pumping lines to pit
10	01/04/2020 00:42	Pump Displacement	8.3400	5.00	20.00	100.00	Start displacement w/20 bbl of water retarder
11	01/04/2020 00:54	Pump Displacement	8.3400	5.00	30.00	850.00	50 bbl on to displacement
12	01/04/2020 01:06	Pump Displacement	8.3400	5.00	50.00	1800.00	100 bbl on to displacement
13	01/04/2020 01:18	Pump Displacement	8.3400	5.00	50.00	1900.00	150 bbl on to displacement
14	01/04/2020 01:30	Pump Displacement	8.3400	5.00	50.00	1900.00	200 bbl on to displacement
15	01/04/2020 01:43	Pump Displacement	8.3400	2.00	40.00	1600.00	240 bbl on to displacement, slow down to 2 bpm to land plug
16	01/04/2020 01:50	Land Plug	8.3400	2.00	25.00	1800.00	265 bbl bump plug 1800 psi to 2410 psi
17	01/04/2020 01:53	Other (See comment)	8.3400	1.50	1.50	3100.00	Pump 1.5 bbl on top to burst plug and walk it to wet shoe sub, 3100 psi to burst
18	01/04/2020 01:56	Check Floats					Check floats, 1.5 bbl back, had good circulation during job
19	01/04/2020 01:57	Rig Down					Rig down equipment
20	01/04/2020 03:00	Leave Location					Leave location, thanks

Customer: Highpoint
Well Number: 01-64-05-3225C
Lease Info: GRINDE



Print Date/Time
1/4/2020 2:20:22 AM



	Name	Y value	X value/time stamp	Tag name Y
1	PS - Press (PSI)	109 i.	1/4/2020 12:39:18 AM i.	Cementer\PS_DISCHARGE_PRESS_DIAL
2	Density (PPG)	0.01	1/4/2020 12:39:14 AM	Cementer\DENSITY_ACTUAL_RATE
3	Combined Rate (BPM)	5.01	1/4/2020 12:39:19 AM	Cementer\Flow_Combined
4				
5				

Source: Control1 2:20:17 AM