



HighPoint Operating Corporation

GRINDE 01-64-05-1724C

API # 05-123-49714

Production

January 18, 2020

Quote #: QUO-41366-G0G4F0

Execution #: EXC-23965-M5T1C202



HighPoint Operating Corporation

Attention: Mr. Matthew Schwartz | (303) 312-8142 | mschwartz@hpres.com

HighPoint Operating Corporation | 1099 18th St. | Denver, CO. 80202

Dear Mr. Matthew Schwartz,

Thank you for the opportunity to provide cementing services on this well. BJ Services strives to achieve complete customer satisfaction. If you have any questions regarding the services or data provided, please contact BJ Services at any time.

Sincerely,
Jason Creel
Field Engineer I | (307) 365-9038 | jason.creel@bjservices.com

Field Office 1716 East Allison Rd., Cheyenne WY, 82007
Phone: (307) 459-6487

Sales Office 999 18th St. Suite 1200 Denver, CO 80202
Phone: (281) 408-2361

BJ Cementing Treatment Report

SERVICE SUPERVISOR	Hector Montoya	RIG	Cade 23
DISTRICT	Cheyenne, WY	COUNTY	WELD
SERVICE	Cementing	STATE / PROVINCE	CO

WELL GEOMETRY

TYPE	ID (in)	OD (in)	WEIGHT (lb/ft)	MD (ft)	TVD (ft)	EXCESS (%)	GRADE
Casing	4.00	4.50	11.60	17,175.00	7,055.00		P-110
Open Hole	6.13	0.00	0.00	17,182.00	7,055.00	10.00	
Previous Casing	6.37	7.00	23.00	7,481.00	7,055.00		J-55

HARDWARE

Bottom Plug Used?	No	Landing Collar Depth (ft)	17,175
Top Plug Used?	No	Max Casing Pressure - Rated (psi)	5350.00
Top Plug Size	4.500	Max Casing Pressure - Operated (psi)	4280.00
Centralizers Used	No	Top Connection Thread	LTC
Centralizers Quantity	130.00	Top Connection Size	4.5

CIRCULATION PRIOR TO JOB

Circulation Prior to Job	No	PV Mud Out	2
Circulation Time (min)	90.00	YP Mud In	4
Circulation Rate (bpm)	6.00	YP Mud Out	4
Circulation Volume (bbls)	540.00	Solids Present at End of Circulation	No
Lost Circulation Prior to Cement Job	No	10 sec SGS	1
Mud Density In (ppg)	8.60	10 min SGS	3
Mud Density Out (ppg)	8.60	Flare Prior to / during the Cement Job	No
PV Mud In	2	Gas Present	No

TEMPERATURE

Ambient Temperature (°F)	20.00	Slurry Cement Temperature (°F)	65.00
Mix Water Temperature (°F)	60.00	Flow Line Temperature (°F)	110.00

Client: HighPoint Operating Corporation

Well: GRINDE #01-64-05-1724C

Well API: 05-123-49714

Start Date: 1/17/2020

End Date: 1/18/2020

Field Ticket #: FT-23965-M5T1C20201-1739734950



FLUID DETAILS

FLUID TYPE	FLUID NAME	DENSITY (ppg)	YIELD (Cu Ft/sk)	H ₂ O REQ (gals/sk)	PLN TOP FLD (ft)	LENGTH (ft)	VOL (sk)	VOL (Cu Ft)	VOL (bbls)
Spacer / Pre Flush / Flush	Fresh Water	8.3300			1,470.00				40.0000
Tail Slurry	BJCem P50.6.01C	13.5000	1.5930	7.95	3,500.00	13,689.00	910	1450.0000	258.2000
Displacement 1	Retarded Water	8.3300			15,897.00			0.0000	20.0000
Displacement Final	Water + Chems	8.3300			0.00			0.0000	247.0000

FLUID TYPE	FLUID NAME	COMPONENT	CONCENTRATION	UOM
Tail Slurry	BJCem P50.6.01C	FOAM PREVENTER, FP-25	0.3000	BWOB
Tail Slurry	BJCem P50.6.01C	CEMENT, FLY ASH (ROCKIES)	50.0000	PCT
Tail Slurry	BJCem P50.6.01C	IntegraGuard GW-86	0.1000	BWOB
Tail Slurry	BJCem P50.6.01C	RETARDER, SR-20	0.2000	BWOB
Tail Slurry	BJCem P50.6.01C	FLUID LOSS, FL-24	0.4000	BWOB
Tail Slurry	BJCem P50.6.01C	IntegraCare EC-2	3.0000	BWOB
Tail Slurry	BJCem P50.6.01C	EXTENDER, BENTONITE	4.0000	BWOB
Tail Slurry	BJCem P50.6.01C	CEMENT, CLASS G	50.0000	PCT
Tail Slurry	BJCem P50.6.01C	BONDING AGENT, BA-90	3.0000	LBS/SK
Displacement Final	Water + Chems	BIOCIDE, BIOC11139W	0.0210	GPB
Displacement Final	Water + Chems	CORROSION INHIBITORS, CI-27	0.2100	GPB
Displacement Final	Water + Chems	OXYGEN SCAVENGER, OS-30	0.1680	GPB

DISPLACEMENT AND END OF JOB SUMMARY

Displaced By	BJ	Amt of Cement Returned / Reversed	0.00
Calculated Displacement Vol (bbls)	266.00	Amt of Spacer to Surface	0.00
Actual Displacement Vol (bbls)	266.00	Pressure Left on Casing (psi)	0.00
Did Float Hold?	Yes	Amt Bled Back After Job	1.00
Bump Plug	Yes	Top Out Cement Spotted	No
Bump Plug Pressure (psi)	2800.00	Lost Circulation During Cement Job	No
Were Returned Planned at Surface	No		

Client: HighPoint Operating Corporation

Well: GRINDE #01-64-05-1724C

Well API: 05-123-49714

Start Date: 1/17/2020

End Date: 1/18/2020

Field Ticket #: FT-23965-M5T1C20201-1739734950



BJ Cementing Event Log

Long String - Cheyenne, WY - Hector Montoya

SEQ	START DATE / TIME	EVENT	DENSITY (ppg)	PUMP RATE (bpm)	PUMP VOL (bbls)	PIPE PRESSURE (psi)	COMMENTS
1	01/17/2020 23:30	Callout					BJ Crew gets called out
2	01/18/2020 01:30	Other (See comment)					Load Up for job
3	01/18/2020 03:00	Arrive on Location					Arrive on location
4	01/18/2020 05:00	Rig Up					Rig Up
5	01/18/2020 06:30	Other (See comment)					Wait on casing to be ran
6	01/18/2020 11:30	STEACS Briefing					BJ Crew and Rig Crew discuss job procedure
7	01/18/2020 12:00	Prime Up					Fill Lines
8	01/18/2020 12:07	Pressure Test					Pressure Test to 4000psi
9	01/18/2020 12:10	Pump Spacer	8.3300	4.00	40.00	1400.00	40bbl Fresh Water Spacer
10	01/18/2020 12:19	Pump Tail Cement	13.5000	6.00	258.00	1200.00	Tail- 258bbl at 13.5ppg, 910sk B J Cem P50.6.01C, y-1.59. Estimated Height of Cement at 15357ft. Estimated Top of Cement at 1894psi
11	01/18/2020 13:09	Wash Pumps and Lines					Wash Pumps to the pit
12	01/18/2020 13:18	Drop Top Plug					Drop Top Plug
13	01/18/2020 13:19	Pump Displacement	8.3300	4.50	246.00	2900.00	Total Displacement 266bbl
14	01/18/2020 14:11	Pump Displacement	8.3300	3.00	20.00	2300.00	Slow rate last 20bbl to 3bpm to land plug
15	01/18/2020 14:15	Land Plug				2800.00	Land Plug, Final Circulating Pressure was 2300psi took to 2800psi. held for a 2miutes and then burst plug at 4000psi. Pumped 1.5bbl for wet show
16	01/18/2020 14:20	Check Floats					Floats held. 1bbl back
17	01/18/2020 14:22	Rig Down					Rig Down
18	01/18/2020 15:30	Leave Location					Leave location

Client: HighPoint Operating Corporation

Well Name / API: GRINDE #01-64-05-1724C / 05-123-49714

Well 17189
MD:



Quote #: QUO-41366-G0G4F0

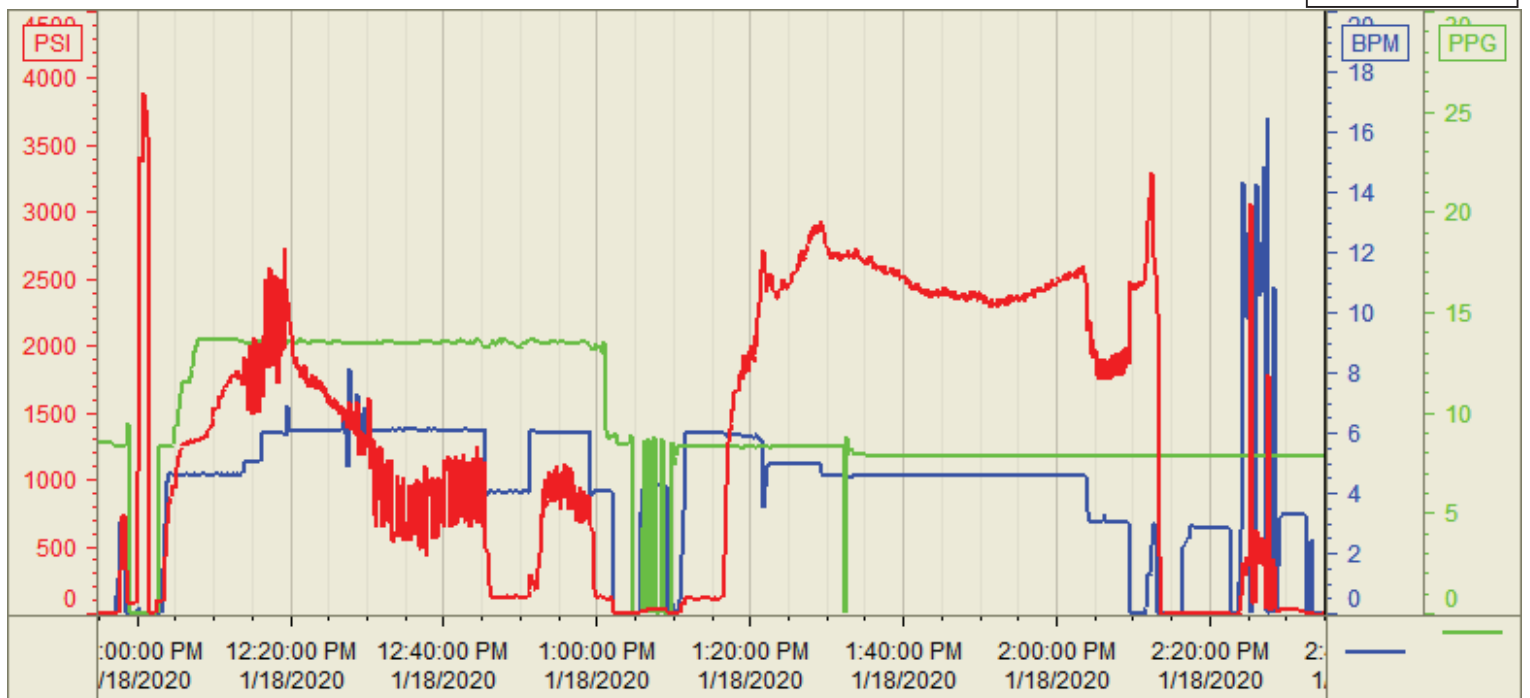
Plan #: ORD-23965-M5T1C2

Execution #: EXC-23965-M5T1C202

Customer: HIGHPOINT
Well Number: 01-64-05-1724C
Lease Info: GRINDE



Print Date/Time
1/18/2020 2:34:56 PM



	Name	Y value	X value/time stamp	Tag name Y
1	PS - Press (PSI)		1/18/2020 2:35:00 PM i.	Cementer\PS_DISCHARGE_PRESS_DIAL
2	Recirc - Density (PPG)		1/18/2020 2:35:00 PM i.	Cementer\DENSITY_ACTUAL_RATE
3	Combined Rate		1/18/2020 2:35:00 PM i.	Cementer\Flow_Combined
4				
5				

Source: Control1 2:34:50 PM