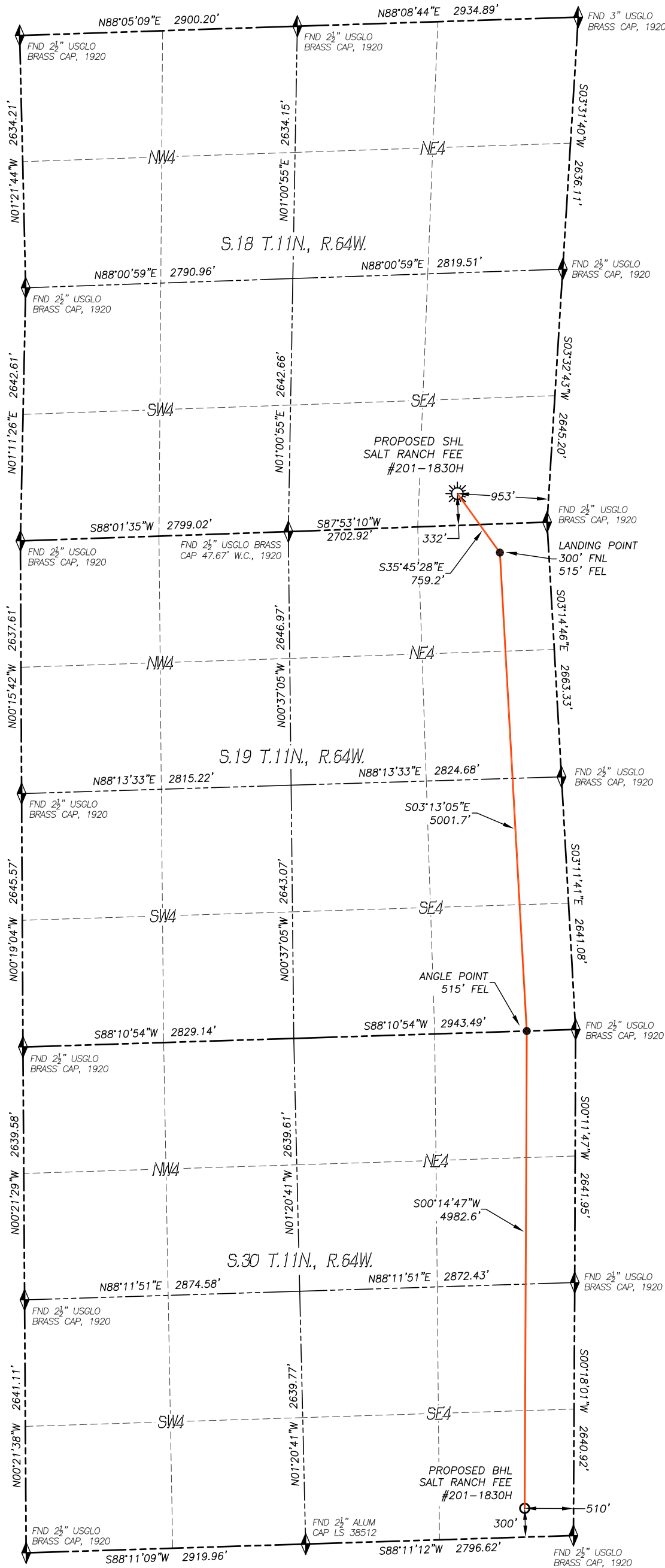


WELL LOCATION CERTIFICATE SALT RANCH FEE #201-1830H

SECTION 18, TOWNSHIP 11 NORTH, RANGE 64 WEST OF THE 6TH P.M., WELD COUNTY



IN ACCORDANCE WITH A REQUEST FROM UPLAND EXPLORATION INC., DALEY LAND SURVEYING, INC. HAS DETERMINED THE SURFACE LOCATION OF THE SALT RANCH FEE #201-1830H WELL TO BE 332' FSL, 953' FEL, AS MEASURED AT NINETY (90) DEGREES FROM THE SECTION LINES OF SECTION 18, TOWNSHIP 11 NORTH, RANGE 64 WEST, AND THE BOTTOM HOLE LOCATION TO BE 300' FSL, 515' FEL, AS MEASURED AT NINETY (90) DEGREES FROM THE SECTION LINES OF SECTION 30, TOWNSHIP 11 NORTH, RANGE 64 WEST, OF THE 6TH PRINCIPAL MERIDIAN, WELD COUNTY, COLORADO.

I HEREBY STATE THAT THIS WELL LOCATION CERTIFICATE WAS PREPARED BY ME OR UNDER MY DIRECT SUPERVISION, THAT THE WORK WAS COMPLETED ON 1/13/2022 FOR AND ON BEHALF OF UPLAND EXPLORATION INC., AND THAT THIS MAP DOES NOT REPRESENT A BOUNDARY SURVEY, IT IS NOT A LAND SURVEY PLAT OR AN IMPROVEMENT SURVEY PLAT AND IT IS NOT TO BE RELIED UPON FOR THE ESTABLISHMENT OF FENCE, BUILDING OR OTHER FUTURE IMPROVEMENT LINES.

NOTES:

- 1) BEARINGS FOR THIS MAP ARE ASSUMED AND BASED UPON GPS OBSERVATIONS MADE BETWEEN MONUMENTS LOCATED AT THE SOUTHEAST CORNER AND THE EAST QUARTER CORNER OF SECTION 18, T.11N., R.64W.
- 2) HORIZONTAL DATUM IS NAD83.
- 3) VERTICAL DATUM IS NAVD88 AND ORIGINATES FROM THE LOCAL C.O.R.S. NETWORK, UTILIZING THE GEOID18A MODEL.
- 4) SURFACE USE: WELL PAD/RANGE LAND.
- 5) INST. OPERATOR: KYLE DALEY

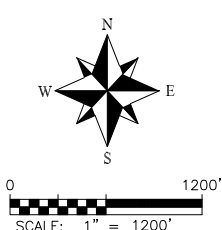


NEAREST CULTURAL ITEMS:	
BUILDING:	5280'+
BUILDING UNIT:	5280'+
HIGH OCC. BLD. UNIT:	5280'+
DES. OUTSIDE ACTIVITY AREA:	5280'+
PUBLIC ROAD:	5280'+
ABOVE GROUND UTILITY:	5280'+
RAILROAD:	5280'+
PROPERTY LINE:	332'± S
SCHOOL FACILITY:	5280'+
SCHOOL PROPERTY LINE:	5280'+
CHILDCARE FACILITY:	5280'+

NAD 83 LATITUDE AND LONGITUDE	
SURFACE LOCATION:	
LATITUDE:	N40.91452°
LONGITUDE:	W104.58408°
ELEV:	5604'
PDOP:	1.5
QTR/QTR:	SE4/SE4
LANDING POINT/TPZ:	
LATITUDE:	N40.91281°
LONGITUDE:	W104.58249°
ANGLE POINT:	
LATITUDE:	N40.89910°
LONGITUDE:	W104.58167°
BOTTOM HOLE:	
LATITUDE:	N40.88543°
LONGITUDE:	W104.58193°

LEGEND

- ◆ FOUND MONUMENT
- ◇ CALCULATED POSITION
- ☀ PROPOSED WELL
- BOTTOM HOLE
- ⊙ ABANDONED WELL
- ⊗ EXISTING WELL



UPLAND EXPLORATION

DALEY LAND SURVEYING, INC.
PARKER, COLORADO
303.953.9841

\\Survey\1806004\Drawings\Salt Ranch Fee #201-1830H.dwg