

# UPLAND EXPLORATION



Location: COLORADO Slot: SLOT#01 SALT RANCH FEE #201-1830H (332'FSL & 953'FEL, SEC.18)  
 Field: WELD COUNTY (TRUE NORTH NAD 83) Well: SALT RANCH FEE #201-1830H  
 Facility: SEC.18-T11N-R64W Wellbore: SALT RANCH FEE #201-1830H PWB

Plot reference wellpath is SALT RANCH FEE #201-1830H PWP Rev-A.0  
 True vertical depths are referenced to Rig (23) (KB)  
 Reference wellpath measured depths are referenced to Rig (23) (KB)  
 Rig (23) (KB) to Mean Sea Level: 5626 feet  
 Mean Sea Level to Ground level (At Slot: SLOT#01 SALT RANCH FEE #201-1830H (332'FSL & 953'FEL, SEC.18)): 0 feet  
 Offset wellpath MDs are referenced to each path's default MD datum  
 Grid System: NAD83 / Lambert Colorado SP, Northern Zone (501), US feet  
 North Reference: True north  
 Scale: True distance  
 Coordinates are in feet referenced to Slot  
 Depths are in feet  
 Created by: painettr on 2022-01-20, Database: WellArchitectDB

### Location Information

Facility Name	Grid East (US ft)	Grid North (US ft)	Latitude	Longitude
SEC.18-T11N-R64W	3253152.526	1577318.920	40°54'52.2720"N	104°35'2.6880"W
Slot	Local N (ft)	Local E (ft)	Grid East (US ft)	Grid North (US ft)
SLOT#01 SALT RANCH FEE #201-1830H (332'FSL & 953'FEL, SEC.18)	0.00	0.00	3253152.526	1577318.920
Rig (23) (KB) to Ground level (At Slot: SLOT#01 SALT RANCH FEE #201-1830H (332'FSL & 953'FEL, SEC.18))	5626ft			
Mean Sea Level to Ground level (At Slot: SLOT#01 SALT RANCH FEE #201-1830H (332'FSL & 953'FEL, SEC.18))	0ft			
Rig (23) (KB) to Mean Sea Level	5626ft			

### Hole and Casing Sections

Name	Start MD (ft)	End MD (ft)	Interval (ft)	Start TVD (ft)	End TVD (ft)	Start Local N (ft)	Start Local E (ft)	End Local N (ft)	End Local E (ft)	Wellbore
9.625in Casing Surface	23.00	1500.00	1477.00	23.00	1500.00	0.00	0.00	0.00	0.00	SALT RANCH FEE #201-1830H PWB

### Survey Program

Start MD (ft)	End MD (ft)	Tool	Model	Log Name/Comment	Wellbore
23.00	1500.00	BH NavTrak (2019)	BH NavTrak (2019) (Axial)		SALT RANCH FEE #201-1830H PWB
1500.00	18268.65	BH AutoTrak Curve/press (2019)	BH AutoTrak Curve/press (2019) (Short spacing)		SALT RANCH FEE #201-1830H PWB

### Bottom Hole Location

MD (ft)	Inc (°)	Az (°)	TVD (ft)	Local N (ft)	Local E (ft)	Grid East (US ft)	Grid North (US ft)	Latitude	Longitude
18268.65	90.197	180.886	7971.00	-10598.72	594.50	3253856.48	1566726.67	40°53'7.5480"N	104°34'54.9480"W

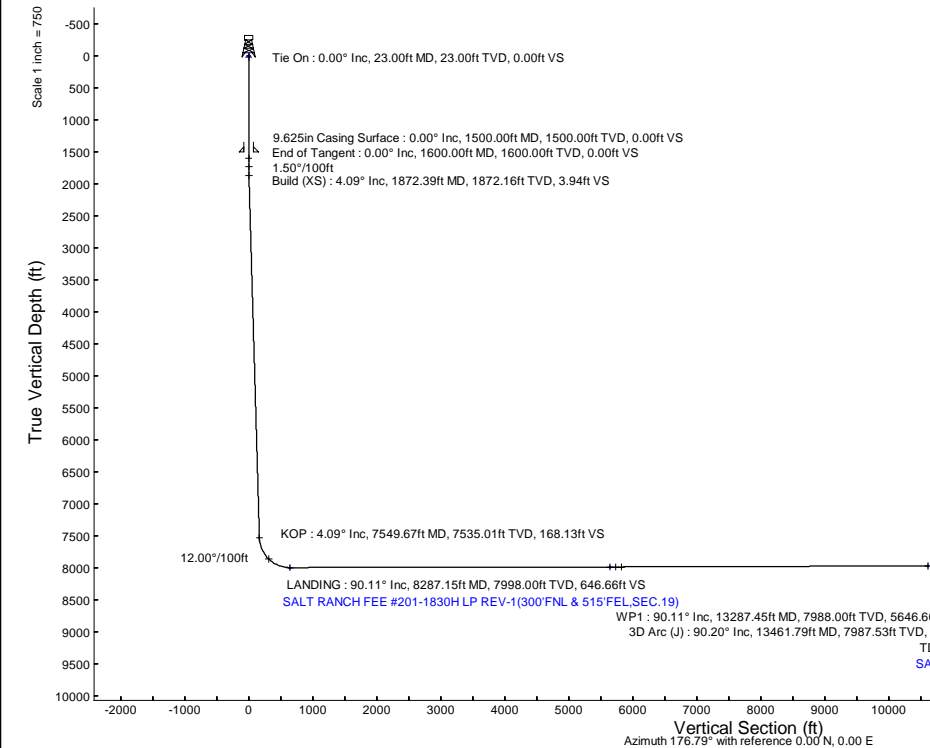
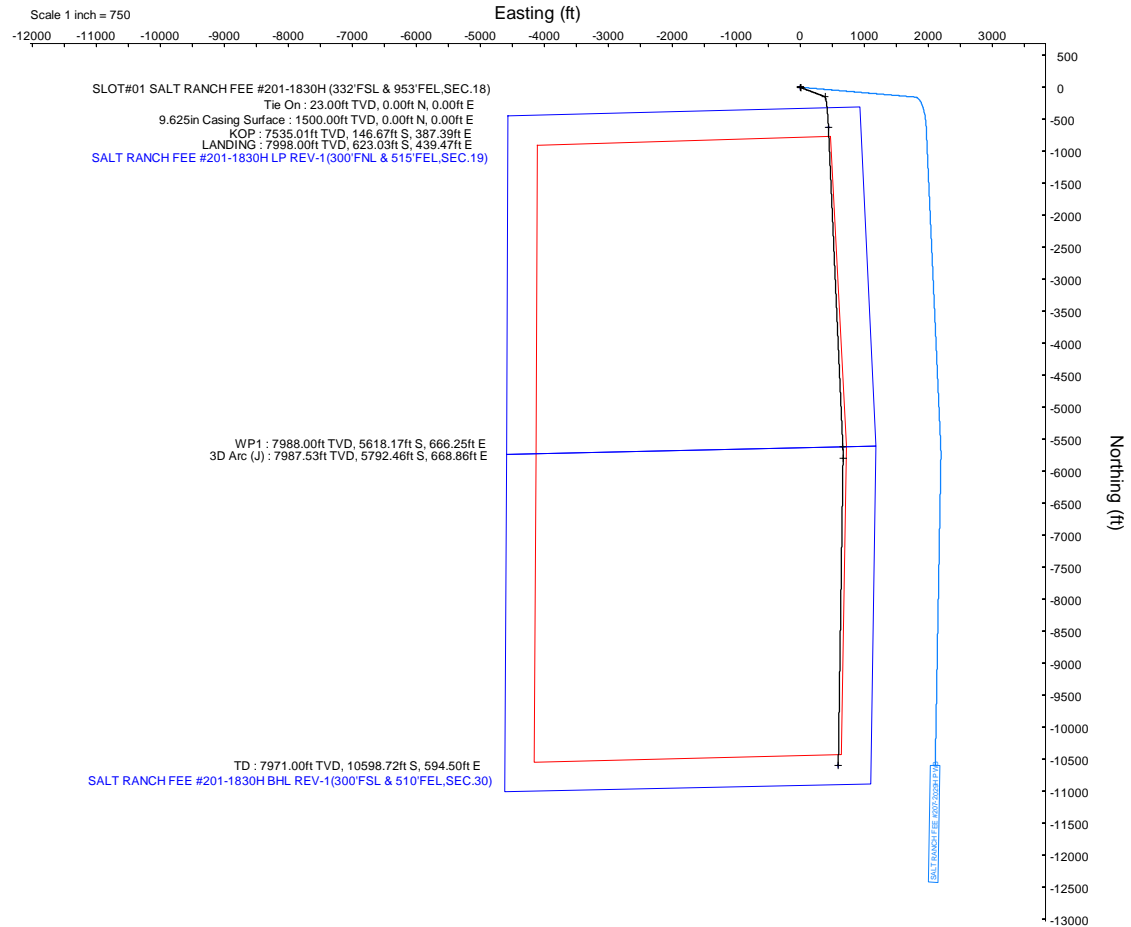
### Targets

Name	MD (ft)	TVD (ft)	Local N (ft)	Local E (ft)	Grid East (US ft)	Grid North (US ft)	Latitude	Longitude
SEC.18-T11N-R64W	N/A	0.00	0.00	0.00	3253152.53	1577318.92	40°54'52.2720"N	104°35'2.6880"W
SEC.19-03-T11N-R64W (SB 460)	N/A	0.00	0.00	0.00	3253152.53	1577318.92	40°54'52.2720"N	104°35'2.6880"W
SEC.20-29-T11N-R64W (SB 460)	N/A	0.00	0.00	0.00	3253152.53	1577318.92	40°54'52.2720"N	104°35'2.6880"W
SEC.30-T11N-R64W	N/A	0.00	0.00	0.00	3253152.53	1577318.92	40°54'52.2720"N	104°35'2.6880"W
SALT RANCH FEE #201-1830H BHL REV-1(300'FNL & 510'FEL, SEC.30)	18268.65	7971.00	-10598.72	594.50	3253856.48	1566726.67	40°53'7.5480"N	104°34'54.9480"W
SALT RANCH FEE #201-1830H WP REV-1	13287.45	7988.00	-5618.17	666.25	3253876.79	1571707.81	40°53'56.7600"N	104°34'54.0120"W
SALT RANCH FEE #201-1830H LP REV-1(300'FNL & 515'FEL, SEC.19)	8287.15	7998.00	-623.03	439.47	3253598.42	1567600.45	40°54'46.1160"N	104°34'56.9640"W

### Well Profile Data

Design Comment	MD (ft)	Inc (°)	Az (°)	TVD (ft)	Local N (ft)	Local E (ft)	DLS (°/100ft)	VS (ft)
Tie On	23.00	0.000	110.737	23.00	0.00	0.00	0.00	0.00
End of Tangent	1600.00	0.000	110.737	1600.00	0.00	0.00	0.00	0.00
Build (XS)	1872.39	4.086	110.737	1872.16	-3.44	9.08	1.50	3.94
KOP	7549.67	4.086	110.737	7535.01	-146.67	387.39	0.00	168.13
LANDING	8287.15	90.115	177.401	7998.00	-623.03	439.47	12.00	646.66
WP1	13287.45	90.115	177.401	7988.00	-5618.17	666.25	0.00	5646.66
3D Arc (J)	13461.79	90.197	180.886	7987.53	-5792.46	668.86	2.00	5820.83
TD	18268.65	90.197	180.886	7971.00	-10598.72	594.50	0.00	10615.38

Scale 1 inch = 750





# Planned Wellpath Report

SALT RANCH FEE #201-1830H PWP Rev-A.0  
Page 1 of 8



REFERENCE WELLPATH IDENTIFICATION			
Operator	UPLAND EXPLORATION	Well	SALT RANCH FEE #201-1830H
Field	WELD COUNTY (TRUE NORTH NAD 83)	API/Legal	
Facility	SEC.18-T11N-R64W	Wellbore	SALT RANCH FEE #201-1830H PWB
Slot	SLOT#01 SALT RANCH FEE #201-1830H (332'FSL & 953'FEL,SEC.18)		

REPORT SETUP INFORMATION			
Projection System	NAD83 / Lambert Colorado SP, Northern Zone (501), US feet	Software System	WellArchitect® 6.0
North Reference	True	User	Painsetr
Scale	1.000024	Report Generated	1/20/2022 at 1:39:13 PM
Convergence at slot	0.59° East	Database	WellArchitectDB

WELLPATH LOCATION						
	Local coordinates		Grid coordinates		Geographic coordinates	
	North[ft]	East[ft]	Easting[US ft]	Northing[US ft]	Latitude	Longitude
Slot Location	0.00	0.00	3253152.53	1577318.92	40.9145200°	-104.5840800°
Facility Reference Pt			3253152.53	1577318.92	40.9145200°	-104.5840800°
Field Reference Pt			3264604.58	1572171.06	40.9000600°	-104.5428500°

WELLPATH DATUM			
Calculation method	Minimum curvature	Rig (23') (KB) to Facility Vertical Datum	5626.00ft
Horizontal Reference Pt	Slot	Rig (23') (KB) to Mean Sea Level	5626.00ft
Vertical Reference Pt	Rig (23') (KB)	Rig (23') (KB) to Ground Level at Slot (SLOT#01 SALT RANCH FEE #201-1830H (332'FSL & 953'FEL,SEC.18))	5626.00ft
MD Reference Pt	Rig (23') (KB)	Section Origin	N 0.00, E 0.00 ft
Field Vertical Reference	Mean Sea Level	Section Azimuth	176.79°



# Planned Wellpath Report

## SALT RANCH FEE #201-1830H PWP Rev-A.0

Page 2 of 8



REFERENCE WELLPATH IDENTIFICATION			
Operator	UPLAND EXPLORATION	Well	SALT RANCH FEE #201-1830H
Field	WELD COUNTY (TRUE NORTH NAD 83)	API/Legal	
Facility	SEC.18-T11N-R64W	Wellbore	SALT RANCH FEE #201-1830H PWB
Slot	SLOT#01 SALT RANCH FEE #201-1830H (332'FSL & 953'FEL,SEC.18)		

WELLPATH DATA (199 stations) † = interpolated, ‡ = extrapolated station												
MD [ft]	Inclination [°]	Azimuth [°]	TVD [ft]	Vert Sect [ft]	North [ft]	East [ft]	Grid East [US ft]	Grid North [US ft]	Latitude	Longitude	DLS [°/100ft]	Comments
0.00†	0.000	110.737	0.00	0.00	0.00	0.00	3253152.53	1577318.92	40.9145200	-104.5840800	0.00	
23.00	0.000	110.737	23.00	0.00	0.00	0.00	3253152.53	1577318.92	40.9145200	-104.5840800	0.00	Tie On
123.00†	0.000	110.737	123.00	0.00	0.00	0.00	3253152.53	1577318.92	40.9145200	-104.5840800	0.00	
223.00†	0.000	110.737	223.00	0.00	0.00	0.00	3253152.53	1577318.92	40.9145200	-104.5840800	0.00	
250.00†	0.000	110.737	250.00	0.00	0.00	0.00	3253152.53	1577318.92	40.9145200	-104.5840800	0.00	Aquifer
323.00†	0.000	110.737	323.00	0.00	0.00	0.00	3253152.53	1577318.92	40.9145200	-104.5840800	0.00	
423.00†	0.000	110.737	423.00	0.00	0.00	0.00	3253152.53	1577318.92	40.9145200	-104.5840800	0.00	
523.00†	0.000	110.737	523.00	0.00	0.00	0.00	3253152.53	1577318.92	40.9145200	-104.5840800	0.00	
623.00†	0.000	110.737	623.00	0.00	0.00	0.00	3253152.53	1577318.92	40.9145200	-104.5840800	0.00	
723.00†	0.000	110.737	723.00	0.00	0.00	0.00	3253152.53	1577318.92	40.9145200	-104.5840800	0.00	
823.00†	0.000	110.737	823.00	0.00	0.00	0.00	3253152.53	1577318.92	40.9145200	-104.5840800	0.00	
923.00†	0.000	110.737	923.00	0.00	0.00	0.00	3253152.53	1577318.92	40.9145200	-104.5840800	0.00	
1023.00†	0.000	110.737	1023.00	0.00	0.00	0.00	3253152.53	1577318.92	40.9145200	-104.5840800	0.00	
1123.00†	0.000	110.737	1123.00	0.00	0.00	0.00	3253152.53	1577318.92	40.9145200	-104.5840800	0.00	
1223.00†	0.000	110.737	1223.00	0.00	0.00	0.00	3253152.53	1577318.92	40.9145200	-104.5840800	0.00	
1323.00†	0.000	110.737	1323.00	0.00	0.00	0.00	3253152.53	1577318.92	40.9145200	-104.5840800	0.00	
1423.00†	0.000	110.737	1423.00	0.00	0.00	0.00	3253152.53	1577318.92	40.9145200	-104.5840800	0.00	
1523.00†	0.000	110.737	1523.00	0.00	0.00	0.00	3253152.53	1577318.92	40.9145200	-104.5840800	0.00	
1600.00	0.000	110.737	1600.00	0.00	0.00	0.00	3253152.53	1577318.92	40.9145200	-104.5840800	0.00	End of Tangent
1623.00†	0.345	110.737	1623.00	0.03	-0.02	0.06	3253152.59	1577318.90	40.9145199	-104.5840798	1.50	
1723.00†	1.845	110.737	1722.98	0.80	-0.70	1.85	3253154.39	1577318.24	40.9145181	-104.5840733	1.50	
1750.04†	2.251	110.737	1750.00	1.20	-1.04	2.76	3253155.29	1577317.90	40.9145171	-104.5840700	1.50	Pierre Sh
1823.00†	3.345	110.737	1822.87	2.64	-2.30	6.09	3253158.64	1577316.68	40.9145137	-104.5840580	1.50	
1872.39	4.086	110.737	1872.16	3.94	-3.44	9.08	3253161.64	1577315.58	40.9145106	-104.5840472	1.50	Build (XS)
1923.00†	4.086	110.737	1922.64	5.40	-4.71	12.45	3253165.03	1577314.33	40.9145071	-104.5840349	0.00	
2023.00†	4.086	110.737	2022.39	8.30	-7.24	19.12	3253171.72	1577311.88	40.9145001	-104.5840108	0.00	
2123.00†	4.086	110.737	2122.13	11.19	-9.76	25.78	3253178.40	1577309.43	40.9144932	-104.5839867	0.00	
2223.00†	4.086	110.737	2221.88	14.08	-12.28	32.44	3253185.09	1577306.97	40.9144863	-104.5839626	0.00	
2323.00†	4.086	110.737	2321.62	16.97	-14.81	39.11	3253191.78	1577304.52	40.9144794	-104.5839385	0.00	
2423.00†	4.086	110.737	2421.37	19.86	-17.33	45.77	3253198.47	1577302.06	40.9144724	-104.5839144	0.00	
2523.00†	4.086	110.737	2521.12	22.76	-19.85	52.43	3253205.16	1577299.61	40.9144655	-104.5838903	0.00	
2623.00†	4.086	110.737	2620.86	25.65	-22.37	59.10	3253211.85	1577297.16	40.9144586	-104.5838662	0.00	
2723.00†	4.086	110.737	2720.61	28.54	-24.90	65.76	3253218.54	1577294.70	40.9144517	-104.5838421	0.00	
2823.00†	4.086	110.737	2820.35	31.43	-27.42	72.42	3253225.23	1577292.25	40.9144447	-104.5838180	0.00	
2902.85†	4.086	110.737	2900.00	33.74	-29.44	77.74	3253230.57	1577290.29	40.9144392	-104.5837987	0.00	Hygiene
2923.00†	4.086	110.737	2920.10	34.33	-29.94	79.09	3253231.92	1577289.79	40.9144378	-104.5837939	0.00	
3023.00†	4.086	110.737	3019.84	37.22	-32.47	85.75	3253238.61	1577287.34	40.9144309	-104.5837697	0.00	
3123.00†	4.086	110.737	3119.59	40.11	-34.99	92.41	3253245.30	1577284.89	40.9144240	-104.5837456	0.00	
3223.00†	4.086	110.737	3219.34	43.00	-37.51	99.08	3253251.99	1577282.43	40.9144170	-104.5837215	0.00	
3323.00†	4.086	110.737	3319.08	45.89	-40.04	105.74	3253258.68	1577279.98	40.9144101	-104.5836974	0.00	
3423.00†	4.086	110.737	3418.83	48.79	-42.56	112.40	3253265.37	1577277.52	40.9144032	-104.5836733	0.00	
3474.30†	4.086	110.737	3470.00	50.27	-43.85	115.82	3253268.80	1577276.27	40.9143996	-104.5836609	0.00	Sussex
3523.00†	4.086	110.737	3518.57	51.68	-45.08	119.07	3253272.06	1577275.07	40.9143963	-104.5836492	0.00	
3623.00†	4.086	110.737	3618.32	54.57	-47.60	125.73	3253278.75	1577272.62	40.9143893	-104.5836251	0.00	
3723.00†	4.086	110.737	3718.07	57.46	-50.13	132.39	3253285.43	1577270.16	40.9143824	-104.5836010	0.00	



# Planned Wellpath Report

## SALT RANCH FEE #201-1830H PWP Rev-A.0

Page 3 of 8



REFERENCE WELLPATH IDENTIFICATION			
Operator	UPLAND EXPLORATION	Well	SALT RANCH FEE #201-1830H
Field	WELD COUNTY (TRUE NORTH NAD 83)	API/Legal	
Facility	SEC.18-T11N-R64W	Wellbore	SALT RANCH FEE #201-1830H PWB
Slot	SLOT#01 SALT RANCH FEE #201-1830H (332'FSL & 953'FEL,SEC.18)		

WELLPATH DATA (199 stations) † = interpolated, ‡ = extrapolated station												
MD [ft]	Inclination [°]	Azimuth [°]	TVD [ft]	Vert Sect [ft]	North [ft]	East [ft]	Grid East [US ft]	Grid North [US ft]	Latitude	Longitude	DLS ["/100ft]	Comments
3823.00†	4.086	110.737	3817.81	60.35	-52.65	139.06	3253292.12	1577267.71	40.9143755	-104.5835769	0.00	
3923.00†	4.086	110.737	3917.56	63.25	-55.17	145.72	3253298.81	1577265.25	40.9143686	-104.5835528	0.00	
4023.00†	4.086	110.737	4017.30	66.14	-57.70	152.39	3253305.50	1577262.80	40.9143616	-104.5835287	0.00	
4123.00†	4.086	110.737	4117.05	69.03	-60.22	159.05	3253312.19	1577260.35	40.9143547	-104.5835046	0.00	
4223.00†	4.086	110.737	4216.79	71.92	-62.74	165.71	3253318.88	1577257.89	40.9143478	-104.5834804	0.00	
4323.00†	4.086	110.737	4316.54	74.82	-65.26	172.38	3253325.57	1577255.44	40.9143409	-104.5834563	0.00	
4423.00†	4.086	110.737	4416.29	77.71	-67.79	179.04	3253332.26	1577252.98	40.9143339	-104.5834322	0.00	
4446.77†	4.086	110.737	4440.00	78.39	-68.39	180.62	3253333.85	1577252.40	40.9143323	-104.5834265	0.00	Shannon
4523.00†	4.086	110.737	4516.03	80.60	-70.31	185.70	3253338.95	1577250.53	40.9143270	-104.5834081	0.00	
4623.00†	4.086	110.737	4615.78	83.49	-72.83	192.37	3253345.64	1577248.08	40.9143201	-104.5833840	0.00	
4723.00†	4.086	110.737	4715.52	86.38	-75.36	199.03	3253352.33	1577245.62	40.9143132	-104.5833599	0.00	
4823.00†	4.086	110.737	4815.27	89.28	-77.88	205.69	3253359.02	1577243.17	40.9143062	-104.5833358	0.00	
4923.00†	4.086	110.737	4915.02	92.17	-80.40	212.36	3253365.71	1577240.71	40.9142993	-104.5833117	0.00	
5023.00†	4.086	110.737	5014.76	95.06	-82.92	219.02	3253372.40	1577238.26	40.9142924	-104.5832876	0.00	
5123.00†	4.086	110.737	5114.51	97.95	-85.45	225.68	3253379.09	1577235.81	40.9142855	-104.5832635	0.00	
5223.00†	4.086	110.737	5214.25	100.84	-87.97	232.35	3253385.78	1577233.35	40.9142785	-104.5832394	0.00	
5323.00†	4.086	110.737	5314.00	103.74	-90.49	239.01	3253392.46	1577230.90	40.9142716	-104.5832152	0.00	
5423.00†	4.086	110.737	5413.74	106.63	-93.02	245.67	3253399.15	1577228.44	40.9142647	-104.5831911	0.00	
5523.00†	4.086	110.737	5513.49	109.52	-95.54	252.34	3253405.84	1577225.99	40.9142578	-104.5831670	0.00	
5623.00†	4.086	110.737	5613.24	112.41	-98.06	259.00	3253412.53	1577223.54	40.9142509	-104.5831429	0.00	
5723.00†	4.086	110.737	5712.98	115.31	-100.58	265.67	3253419.22	1577221.08	40.9142439	-104.5831188	0.00	
5823.00†	4.086	110.737	5812.73	118.20	-103.11	272.33	3253425.91	1577218.63	40.9142370	-104.5830947	0.00	
5923.00†	4.086	110.737	5912.47	121.09	-105.63	278.99	3253432.60	1577216.17	40.9142301	-104.5830706	0.00	
6023.00†	4.086	110.737	6012.22	123.98	-108.15	285.66	3253439.29	1577213.72	40.9142232	-104.5830465	0.00	
6123.00†	4.086	110.737	6111.97	126.87	-110.68	292.32	3253445.98	1577211.27	40.9142162	-104.5830224	0.00	
6223.00†	4.086	110.737	6211.71	129.77	-113.20	298.98	3253452.67	1577208.81	40.9142093	-104.5829983	0.00	
6323.00†	4.086	110.737	6311.46	132.66	-115.72	305.65	3253459.36	1577206.36	40.9142024	-104.5829742	0.00	
6423.00†	4.086	110.737	6411.20	135.55	-118.25	312.31	3253466.05	1577203.90	40.9141955	-104.5829500	0.00	
6523.00†	4.086	110.737	6510.95	138.44	-120.77	318.97	3253472.74	1577201.45	40.9141885	-104.5829259	0.00	
6623.00†	4.086	110.737	6610.70	141.33	-123.29	325.64	3253479.43	1577199.00	40.9141816	-104.5829018	0.00	
6723.00†	4.086	110.737	6710.44	144.23	-125.81	332.30	3253486.12	1577196.54	40.9141747	-104.5828777	0.00	
6823.00†	4.086	110.737	6810.19	147.12	-128.34	338.96	3253492.81	1577194.09	40.9141678	-104.5828536	0.00	
6923.00†	4.086	110.737	6909.93	150.01	-130.86	345.63	3253499.49	1577191.63	40.9141608	-104.5828295	0.00	
7023.00†	4.086	110.737	7009.68	152.90	-133.38	352.29	3253506.18	1577189.18	40.9141539	-104.5828054	0.00	
7123.00†	4.086	110.737	7109.42	155.79	-135.91	358.95	3253512.87	1577186.73	40.9141470	-104.5827813	0.00	
7223.00†	4.086	110.737	7209.17	158.69	-138.43	365.62	3253519.56	1577184.27	40.9141401	-104.5827572	0.00	
7323.00†	4.086	110.737	7308.92	161.58	-140.95	372.28	3253526.25	1577181.82	40.9141331	-104.5827331	0.00	
7423.00†	4.086	110.737	7408.66	164.47	-143.47	378.95	3253532.94	1577179.36	40.9141262	-104.5827090	0.00	
7523.00†	4.086	110.737	7508.41	167.36	-146.00	385.61	3253539.63	1577176.91	40.9141193	-104.5826848	0.00	
7549.67	4.086	110.737	7535.01	168.13	-146.67	387.39	3253541.41	1577176.26	40.9141174	-104.5826784	0.00	KOP
7623.00†	11.065	157.799	7607.71	175.86	-154.12	392.50	3253546.60	1577168.85	40.9140970	-104.5826599	12.00	
7723.00†	22.713	168.378	7703.25	204.14	-182.02	400.04	3253554.43	1577141.04	40.9140204	-104.5826326	12.00	
7823.00†	34.596	171.937	7790.85	251.70	-229.21	407.94	3253562.82	1577093.93	40.9138909	-104.5826041	12.00	
7880.34†	41.438	173.132	7836.00	286.90	-264.21	412.50	3253567.74	1577058.98	40.9137948	-104.5825876	12.00	Sharon Springs
7923.00†	46.534	173.829	7866.68	316.47	-293.64	415.85	3253571.40	1577029.59	40.9137141	-104.5825754	12.00	



# Planned Wellpath Report

## SALT RANCH FEE #201-1830H PWP Rev-A.0

Page 4 of 8



REFERENCE WELLPATH IDENTIFICATION			
Operator	UPLAND EXPLORATION	Well	SALT RANCH FEE #201-1830H
Field	WELD COUNTY (TRUE NORTH NAD 83)	API/Legal	
Facility	SEC.18-T11N-R64W	Wellbore	SALT RANCH FEE #201-1830H PWB
Slot	SLOT#01 SALT RANCH FEE #201-1830H (332'FSL & 953'FEL,SEC.18)		

WELLPATH DATA (199 stations) † = interpolated, ‡ = extrapolated station												
MD [ft]	Inclination [°]	Azimuth [°]	TVD [ft]	Vert Sect [ft]	North [ft]	East [ft]	Grid East [US ft]	Grid North [US ft]	Latitude	Longitude	DLS [°/100ft]	Comments
7944.32†	49.082	174.134	7881.00	332.24	-309.34	417.51	3253573.22	1577013.90	40.9136710	-104.5825694	12.00	Fort Hays
8001.88†	55.966	174.854	7916.00	377.85	-354.78	421.87	3253578.05	1576968.50	40.9135462	-104.5825536	12.00	Niobrara
8023.00†	58.493	175.089	7927.43	395.61	-372.48	423.43	3253579.79	1576950.83	40.9134977	-104.5825480	12.00	
8123.00†	70.461	176.059	7970.44	485.66	-462.29	430.34	3253587.63	1576861.09	40.9132512	-104.5825230	12.00	
8223.00†	82.434	176.894	7993.83	582.70	-559.14	436.29	3253594.58	1576764.30	40.9129853	-104.5825015	12.00	
8287.15	90.115	177.401	7998.00 <sup>1</sup>	646.66	-623.03	439.47	3253598.42	1576700.45	40.9128100	-104.5824900	12.00	LANDING
8323.00†	90.115	177.401	7997.93	682.51	-658.84	441.10	3253600.42	1576664.65	40.9127117	-104.5824841	0.00	
8423.00†	90.115	177.401	7997.73	782.51	-758.74	445.63	3253605.98	1576564.81	40.9124375	-104.5824677	0.00	
8523.00†	90.115	177.401	7997.53	882.50	-858.64	450.17	3253611.55	1576464.96	40.9121633	-104.5824513	0.00	
8623.00†	90.115	177.401	7997.33	982.49	-958.53	454.70	3253617.12	1576365.11	40.9118891	-104.5824349	0.00	
8723.00†	90.115	177.401	7997.13	1082.49	-1058.43	459.24	3253622.68	1576265.27	40.9116150	-104.5824185	0.00	
8823.00†	90.115	177.401	7996.93	1182.48	-1158.33	463.77	3253628.25	1576165.42	40.9113408	-104.5824021	0.00	
8923.00†	90.115	177.401	7996.73	1282.48	-1258.22	468.31	3253633.82	1576065.57	40.9110666	-104.5823857	0.00	
9023.00†	90.115	177.401	7996.53	1382.47	-1358.12	472.85	3253639.38	1575965.73	40.9107924	-104.5823693	0.00	
9123.00†	90.115	177.401	7996.33	1482.46	-1458.02	477.38	3253644.95	1575865.88	40.9105182	-104.5823529	0.00	
9223.00†	90.115	177.401	7996.13	1582.46	-1557.91	481.92	3253650.52	1575766.03	40.9102440	-104.5823365	0.00	
9323.00†	90.115	177.401	7995.93	1682.45	-1657.81	486.45	3253656.09	1575666.19	40.9099699	-104.5823201	0.00	
9423.00†	90.115	177.401	7995.73	1782.45	-1757.71	490.99	3253661.65	1575566.34	40.9096957	-104.5823037	0.00	
9523.00†	90.115	177.401	7995.53	1882.44	-1857.60	495.52	3253667.22	1575466.49	40.9094215	-104.5822873	0.00	
9623.00†	90.115	177.401	7995.33	1982.43	-1957.50	500.06	3253672.79	1575366.64	40.9091473	-104.5822709	0.00	
9723.00†	90.115	177.401	7995.13	2082.43	-2057.40	504.59	3253678.35	1575266.80	40.9088731	-104.5822545	0.00	
9823.00†	90.115	177.401	7994.93	2182.42	-2157.30	509.13	3253683.92	1575166.95	40.9085989	-104.5822381	0.00	
9923.00†	90.115	177.401	7994.73	2282.42	-2257.19	513.66	3253689.49	1575067.10	40.9083248	-104.5822217	0.00	
10023.00†	90.115	177.401	7994.53	2382.41	-2357.09	518.20	3253695.06	1574967.26	40.9080506	-104.5822053	0.00	
10123.00†	90.115	177.401	7994.33	2482.41	-2456.99	522.73	3253700.62	1574867.41	40.9077764	-104.5821889	0.00	
10223.00†	90.115	177.401	7994.13	2582.40	-2556.88	527.27	3253706.19	1574767.56	40.9075022	-104.5821725	0.00	
10323.00†	90.115	177.401	7993.93	2682.39	-2656.78	531.81	3253711.76	1574667.72	40.9072280	-104.5821561	0.00	
10423.00†	90.115	177.401	7993.73	2782.39	-2756.68	536.34	3253717.32	1574567.87	40.9069538	-104.5821397	0.00	
10523.00†	90.115	177.401	7993.53	2882.38	-2856.57	540.88	3253722.89	1574468.02	40.9066797	-104.5821233	0.00	
10623.00†	90.115	177.401	7993.33	2982.38	-2956.47	545.41	3253728.46	1574368.18	40.9064055	-104.5821069	0.00	
10723.00†	90.115	177.401	7993.13	3082.37	-3056.37	549.95	3253734.02	1574268.33	40.9061313	-104.5820905	0.00	
10823.00†	90.115	177.401	7992.93	3182.36	-3156.26	554.48	3253739.59	1574168.48	40.9058571	-104.5820741	0.00	
10923.00†	90.115	177.401	7992.73	3282.36	-3256.16	559.02	3253745.16	1574068.63	40.9055829	-104.5820577	0.00	
11023.00†	90.115	177.401	7992.53	3382.35	-3356.06	563.55	3253750.73	1573968.79	40.9053087	-104.5820413	0.00	
11123.00†	90.115	177.401	7992.33	3482.35	-3455.96	568.09	3253756.29	1573868.94	40.9050346	-104.5820249	0.00	
11223.00†	90.115	177.401	7992.13	3582.34	-3555.85	572.62	3253761.86	1573769.09	40.9047604	-104.5820085	0.00	
11323.00†	90.115	177.401	7991.93	3682.33	-3655.75	577.16	3253767.43	1573669.25	40.9044862	-104.5819921	0.00	
11423.00†	90.115	177.401	7991.73	3782.33	-3755.65	581.69	3253772.99	1573569.40	40.9042120	-104.5819757	0.00	
11523.00†	90.115	177.401	7991.53	3882.32	-3855.54	586.23	3253778.56	1573469.55	40.9039378	-104.5819593	0.00	
11623.00†	90.115	177.401	7991.33	3982.32	-3955.44	590.76	3253784.13	1573369.71	40.9036636	-104.5819429	0.00	
11723.00†	90.115	177.401	7991.13	4082.31	-4055.34	595.30	3253789.70	1573269.86	40.9033895	-104.5819265	0.00	
11823.00†	90.115	177.401	7990.93	4182.31	-4155.23	599.84	3253795.26	1573170.01	40.9031153	-104.5819101	0.00	
11923.00†	90.115	177.401	7990.73	4282.30	-4255.13	604.37	3253800.83	1573070.17	40.9028411	-104.5818937	0.00	
12023.00†	90.115	177.401	7990.53	4382.29	-4355.03	608.91	3253806.40	1572970.32	40.9025669	-104.5818773	0.00	
12123.00†	90.115	177.401	7990.33	4482.29	-4454.92	613.44	3253811.96	1572870.47	40.9022927	-104.5818609	0.00	



# Planned Wellpath Report

## SALT RANCH FEE #201-1830H PWP Rev-A.0

Page 5 of 8



### REFERENCE WELLPATH IDENTIFICATION

Operator	UPLAND EXPLORATION	Well	SALT RANCH FEE #201-1830H
Field	WELD COUNTY (TRUE NORTH NAD 83)	API/Legal	
Facility	SEC.18-T11N-R64W	Wellbore	SALT RANCH FEE #201-1830H PWB
Slot	SLOT#01 SALT RANCH FEE #201-1830H (332'FSL & 953'FEL,SEC.18)		

### WELLPATH DATA (199 stations) † = interpolated, ‡ = extrapolated station

MD [ft]	Inclination [°]	Azimuth [°]	TVD [ft]	Vert Sect [ft]	North [ft]	East [ft]	Grid East [US ft]	Grid North [US ft]	Latitude	Longitude	DLS [°/100ft]	Comments
12223.00†	90.115	177.401	7990.13	4582.28	-4554.82	617.98	3253817.53	1572770.62	40.9020185	-104.5818445	0.00	
12323.00†	90.115	177.401	7989.93	4682.28	-4654.72	622.51	3253823.10	1572670.78	40.9017444	-104.5818281	0.00	
12423.00†	90.115	177.401	7989.73	4782.27	-4754.61	627.05	3253828.66	1572570.93	40.9014702	-104.5818117	0.00	
12523.00†	90.115	177.401	7989.53	4882.26	-4854.51	631.58	3253834.23	1572471.08	40.9011960	-104.5817953	0.00	
12623.00†	90.115	177.401	7989.33	4982.26	-4954.41	636.12	3253839.80	1572371.24	40.9009218	-104.5817789	0.00	
12723.00†	90.115	177.401	7989.13	5082.25	-5054.31	640.65	3253845.37	1572271.39	40.9006476	-104.5817625	0.00	
12823.00†	90.115	177.401	7988.93	5182.25	-5154.20	645.19	3253850.93	1572171.54	40.9003734	-104.5817462	0.00	
12923.00†	90.115	177.401	7988.73	5282.24	-5254.10	649.72	3253856.50	1572071.70	40.9000993	-104.5817298	0.00	
13023.00†	90.115	177.401	7988.53	5382.23	-5354.00	654.26	3253862.07	1571971.85	40.8998251	-104.5817134	0.00	
13123.00†	90.115	177.401	7988.33	5482.23	-5453.89	658.80	3253867.63	1571872.00	40.8995509	-104.5816970	0.00	
13223.00†	90.115	177.401	7988.13	5582.22	-5553.79	663.33	3253873.20	1571772.16	40.8992767	-104.5816806	0.00	
13287.45	90.115	177.401	7988.00‡	5646.66	-5618.17	666.25	3253876.79	1571707.81	40.8991000	-104.5816700	0.00	WP1
13323.00†	90.131	178.111	7987.92	5682.21	-5653.70	667.65	3253878.55	1571672.30	40.8990025	-104.5816650	2.00	
13423.00†	90.179	180.111	7987.65	5782.13	-5753.68	669.20	3253881.13	1571572.33	40.8987281	-104.5816594	2.00	
13461.79	90.197	180.886	7987.53	5820.83	-5792.46	668.86	3253881.19	1571533.55	40.8986216	-104.5816606	2.00	3D Arc (J)
13523.00†	90.197	180.886	7987.32	5881.89	-5853.67	667.91	3253880.88	1571472.33	40.8984536	-104.5816640	0.00	
13623.00†	90.197	180.886	7986.97	5981.63	-5953.66	666.37	3253880.37	1571372.33	40.8981792	-104.5816696	0.00	
13723.00†	90.197	180.886	7986.63	6081.38	-6053.64	664.82	3253879.85	1571272.33	40.8979048	-104.5816752	0.00	
13823.00†	90.197	180.886	7986.28	6181.12	-6153.63	663.27	3253879.34	1571172.33	40.8976303	-104.5816808	0.00	
13923.00†	90.197	180.886	7985.94	6280.86	-6253.62	661.72	3253878.82	1571072.33	40.8973559	-104.5816864	0.00	
14023.00†	90.197	180.886	7985.60	6380.61	-6353.61	660.18	3253878.31	1570972.33	40.8970815	-104.5816921	0.00	
14123.00†	90.197	180.886	7985.25	6480.35	-6453.59	658.63	3253877.80	1570872.33	40.8968070	-104.5816977	0.00	
14223.00†	90.197	180.886	7984.91	6580.09	-6553.58	657.08	3253877.28	1570772.33	40.8965326	-104.5817033	0.00	
14323.00†	90.197	180.886	7984.57	6679.84	-6653.57	655.54	3253876.77	1570672.33	40.8962582	-104.5817089	0.00	
14423.00†	90.197	180.886	7984.22	6779.58	-6753.56	653.99	3253876.25	1570572.33	40.8959837	-104.5817145	0.00	
14523.00†	90.197	180.886	7983.88	6879.33	-6853.54	652.44	3253875.74	1570472.33	40.8957093	-104.5817201	0.00	
14623.00†	90.197	180.886	7983.53	6979.07	-6953.53	650.90	3253875.22	1570372.33	40.8954349	-104.5817257	0.00	
14723.00†	90.197	180.886	7983.19	7078.81	-7053.52	649.35	3253874.71	1570272.33	40.8951604	-104.5817313	0.00	
14823.00†	90.197	180.886	7982.85	7178.56	-7153.51	647.80	3253874.20	1570172.33	40.8948860	-104.5817369	0.00	
14923.00†	90.197	180.886	7982.50	7278.30	-7253.49	646.25	3253873.68	1570072.33	40.8946116	-104.5817425	0.00	
15023.00†	90.197	180.886	7982.16	7378.05	-7353.48	644.71	3253873.17	1569972.33	40.8943371	-104.5817481	0.00	
15123.00†	90.197	180.886	7981.81	7477.79	-7453.47	643.16	3253872.65	1569872.33	40.8940627	-104.5817537	0.00	
15223.00†	90.197	180.886	7981.47	7577.53	-7553.46	641.61	3253872.14	1569772.33	40.8937883	-104.5817593	0.00	
15323.00†	90.197	180.886	7981.13	7677.28	-7653.44	640.07	3253871.62	1569672.33	40.8935138	-104.5817649	0.00	
15423.00†	90.197	180.886	7980.78	7777.02	-7753.43	638.52	3253871.11	1569572.33	40.8932394	-104.5817705	0.00	
15523.00†	90.197	180.886	7980.44	7876.77	-7853.42	636.97	3253870.60	1569472.33	40.8929650	-104.5817761	0.00	
15623.00†	90.197	180.886	7980.10	7976.51	-7953.41	635.42	3253870.08	1569372.33	40.8926905	-104.5817817	0.00	
15723.00†	90.197	180.886	7979.75	8076.25	-8053.39	633.88	3253869.57	1569272.33	40.8924161	-104.5817873	0.00	
15823.00†	90.197	180.886	7979.41	8176.00	-8153.38	632.33	3253869.05	1569172.33	40.8921417	-104.5817929	0.00	
15923.00†	90.197	180.886	7979.06	8275.74	-8253.37	630.78	3253868.54	1569072.33	40.8918672	-104.5817985	0.00	
16023.00†	90.197	180.886	7978.72	8375.48	-8353.36	629.24	3253868.03	1568972.33	40.8915928	-104.5818042	0.00	
16123.00†	90.197	180.886	7978.38	8475.23	-8453.34	627.69	3253867.51	1568872.33	40.8913184	-104.5818098	0.00	
16223.00†	90.197	180.886	7978.03	8574.97	-8553.33	626.14	3253867.00	1568772.33	40.8910439	-104.5818154	0.00	
16323.00†	90.197	180.886	7977.69	8674.72	-8653.32	624.60	3253866.48	1568672.33	40.8907695	-104.5818210	0.00	
16423.00†	90.197	180.886	7977.35	8774.46	-8753.30	623.05	3253865.97	1568572.33	40.8904951	-104.5818266	0.00	



# Planned Wellpath Report

## SALT RANCH FEE #201-1830H PWP Rev-A.0

Page 6 of 8



REFERENCE WELLPATH IDENTIFICATION			
Operator	UPLAND EXPLORATION	Well	SALT RANCH FEE #201-1830H
Field	WELD COUNTY (TRUE NORTH NAD 83)	API/Legal	
Facility	SEC.18-T11N-R64W	Wellbore	SALT RANCH FEE #201-1830H PWB
Slot	SLOT#01 SALT RANCH FEE #201-1830H (332'FSL & 953'FEL,SEC.18)		

WELLPATH DATA (199 stations) † = interpolated, ‡ = extrapolated station												
MD [ft]	Inclination [°]	Azimuth [°]	TVD [ft]	Vert Sect [ft]	North [ft]	East [ft]	Grid East [US ft]	Grid North [US ft]	Latitude	Longitude	DLS [°/100ft]	Comments
16523.00†	90.197	180.886	7977.00	8874.20	-8853.29	621.50	3253865.45	1568472.33	40.8902206	-104.5818322	0.00	
16623.00†	90.197	180.886	7976.66	8973.95	-8953.28	619.95	3253864.94	1568372.32	40.8899462	-104.5818378	0.00	
16723.00†	90.197	180.886	7976.31	9073.69	-9053.27	618.41	3253864.43	1568272.32	40.8896718	-104.5818434	0.00	
16823.00†	90.197	180.886	7975.97	9173.44	-9153.25	616.86	3253863.91	1568172.32	40.8893973	-104.5818490	0.00	
16923.00†	90.197	180.886	7975.63	9273.18	-9253.24	615.31	3253863.40	1568072.32	40.8891229	-104.5818546	0.00	
17023.00†	90.197	180.886	7975.28	9372.92	-9353.23	613.77	3253862.88	1567972.32	40.8888485	-104.5818602	0.00	
17123.00†	90.197	180.886	7974.94	9472.67	-9453.22	612.22	3253862.37	1567872.32	40.8885740	-104.5818658	0.00	
17223.00†	90.197	180.886	7974.59	9572.41	-9553.20	610.67	3253861.85	1567772.32	40.8882996	-104.5818714	0.00	
17323.00†	90.197	180.886	7974.25	9672.15	-9653.19	609.13	3253861.34	1567672.32	40.8880252	-104.5818770	0.00	
17423.00†	90.197	180.886	7973.91	9771.90	-9753.18	607.58	3253860.83	1567572.32	40.8877507	-104.5818826	0.00	
17523.00†	90.197	180.886	7973.56	9871.64	-9853.17	606.03	3253860.31	1567472.32	40.8874763	-104.5818882	0.00	
17623.00†	90.197	180.886	7973.22	9971.39	-9953.15	604.48	3253859.80	1567372.32	40.8872019	-104.5818938	0.00	
17723.00†	90.197	180.886	7972.88	10071.13	-10053.14	602.94	3253859.28	1567272.32	40.8869274	-104.5818994	0.00	
17823.00†	90.197	180.886	7972.53	10170.87	-10153.13	601.39	3253858.77	1567172.32	40.8866530	-104.5819050	0.00	
17923.00†	90.197	180.886	7972.19	10270.62	-10253.12	599.84	3253858.26	1567072.32	40.8863786	-104.5819106	0.00	
18023.00†	90.197	180.886	7971.84	10370.36	-10353.10	598.30	3253857.74	1566972.32	40.8861041	-104.5819162	0.00	
18123.00†	90.197	180.886	7971.50	10470.11	-10453.09	596.75	3253857.23	1566872.32	40.8858297	-104.5819218	0.00	
18223.00†	90.197	180.886	7971.16	10569.85	-10553.08	595.20	3253856.71	1566772.32	40.8855553	-104.5819274	0.00	
18268.65	90.197	180.886	7971.00‡	10615.38	-10598.72	594.50	3253856.48	1566726.67	40.8854300	-104.5819300	0.00	TD

HOLE & CASING SECTIONS									
- Ref Wellbore: SALT RANCH FEE #201-1830H PWB      Ref Wellpath: SALT RANCH FEE #201-1830H PWP Rev-A.0									
String/Diameter	Start MD [ft]	End MD [ft]	Interval [ft]	Start TVD [ft]	End TVD [ft]	Start N/S [ft]	Start E/W [ft]	End N/S [ft]	End E/W [ft]
9.625in Casing Surface	23.00	1500.00	1477.00	23.00	1500.00	0.00	0.00	0.00	0.00



# Planned Wellpath Report

SALT RANCH FEE #201-1830H PWP Rev-A.0  
Page 7 of 8



REFERENCE WELLPATH IDENTIFICATION			
Operator	UPLAND EXPLORATION	Well	SALT RANCH FEE #201-1830H
Field	WELD COUNTY (TRUE NORTH NAD 83)	API/Legal	
Facility	SEC.18-T11N-R64W	Wellbore	SALT RANCH FEE #201-1830H PWB
Slot	SLOT#01 SALT RANCH FEE #201-1830H (332'FSL & 953'FEL,SEC.18)		

TARGETS									
Name	MD [ft]	TVD [ft]	North [ft]	East [ft]	Grid East [US ft]	Grid North [US ft]	Latitude	Longitude	Shape
SEC.19-T11N-R64W	N/A	0.00	0.00	0.00	3253152.53	1577318.92	40.9145200	-104.5840800	polygon
2D Polygon: dimensions not calculated									
SEC.19/30-T11N-R64W (SB 460')	N/A	0.00	0.00	0.00	3253152.53	1577318.92	40.9145200	-104.5840800	polygon
2D Polygon: dimensions not calculated									
SEC.20/29-T11N-R64W (SB 460')	N/A	0.00	0.00	0.00	3253152.53	1577318.92	40.9145200	-104.5840800	polygon
2D Polygon: dimensions not calculated									
SEC.30-T11N-R64W	N/A	0.00	0.00	0.00	3253152.53	1577318.92	40.9145200	-104.5840800	polygon
2D Polygon: dimensions not calculated									
3) SALT RANCH FEE #201-1830H BHL REV-1(300'FSL & 510'FEL,SEC.30)	18268.65	7971.00	-10598.72	594.50	3253856.48	1566726.67	40.8854300	-104.5819300	point
2) SALT RANCH FEE #201-1830H WP REV-1	13287.45	7988.00	-5618.17	666.25	3253876.79	1571707.81	40.8991000	-104.5816700	point
1) SALT RANCH FEE #201-1830H LP REV-1(300'FNL & 515'FEL,SEC.19)	8287.15	7998.00	-623.03	439.47	3253598.42	1576700.45	40.9128100	-104.5824900	point

SURVEY PROGRAM -				
Ref Wellbore: SALT RANCH FEE #201-1830H PWB		Ref Wellpath: SALT RANCH FEE #201-1830H PWP Rev-A.0		
Start MD [ft]	End MD [ft]	Positional Uncertainty Model	Log Name/Comment	Wellbore
23.00	1500.00	BH NaviTrak (2019) (Axial)		SALT RANCH FEE #201-1830H PWB
1500.00	18268.65	BH AutoTrak Curve/eXpress (2019) (Short spacing)		SALT RANCH FEE #201-1830H PWB



# Planned Wellpath Report

SALT RANCH FEE #201-1830H PWP Rev-A.0  
Page 8 of 8



## REFERENCE WELLPATH IDENTIFICATION

Operator	UPLAND EXPLORATION	Well	SALT RANCH FEE #201-1830H
Field	WELD COUNTY (TRUE NORTH NAD 83)	API/Legal	
Facility	SEC.18-T11N-R64W	Wellbore	SALT RANCH FEE #201-1830H PWB
Slot	SLOT#01 SALT RANCH FEE #201-1830H (332'FSL & 953'FEL,SEC.18)		

## WELLPATH COMMENTS

MD [ft]	Inclination [°]	Azimuth [°]	TVD [ft]	Comment
250.00	0.000	110.737	250.00	Aquifer
1750.04	2.251	110.737	1750.00	Pierre Sh
2902.85	4.086	110.737	2900.00	Hygiene
3474.30	4.086	110.737	3470.00	Sussex
4446.77	4.086	110.737	4440.00	Shannon
7880.34	41.438	173.132	7836.00	Sharon Springs
7944.32	49.082	174.134	7881.00	Fort Hays
8001.88	55.966	174.854	7916.00	Niobrara

## DESIGN COMMENTS

MD [ft]	Inclination [°]	Azimuth [°]	TVD [ft]	Comment
23.00	0.000	110.737	23.00	Tie On
1600.00	0.000	110.737	1600.00	End of Tangent
1872.39	4.086	110.737	1872.16	Build (XS)
7549.67	4.086	110.737	7535.01	KOP
8287.15	90.115	177.401	7998.00	LANDING
13287.45	90.115	177.401	7988.00	WP1
13461.79	90.197	180.886	7987.53	3D Arc (J)
18268.65	90.197	180.886	7971.00	TD



# Closest Approach Clearance Summary Report

SALT RANCH FEE #201-1830H PWP Rev-A.0 - SPE WPTS  
Stop Drilling HSE Risk (2017)

Page 1 of 2



## REFERENCE WELLPATH IDENTIFICATION

Operator	UPLAND EXPLORATION	Well	SALT RANCH FEE #201-1830H
Field	WELD COUNTY (TRUE NORTH NAD 83)	API/Legal	
Facility	SEC.18-T11N-R64W	Wellbore	SALT RANCH FEE #201-1830H PWB
Slot	SLOT#01 SALT RANCH FEE #201-1830H (332'FSL & 953'FEL,SEC.18)		

## REPORT SETUP INFORMATION

Projection System	NAD83 / Lambert Colorado SP, Northern Zone (501), US feet	Software System	WellArchitect® 6.0
North Reference	True	User	Painsetr
Scale	1.000024	Report Generated	1/20/2022 at 1:39:16 PM
Convergence at slot	0.59° East	Database	WellArchitectDB

## WELLPATH LOCATION

	Local coordinates		Grid coordinates		Geographic coordinates	
	North[ft]	East[ft]	Easting[US ft]	Northing[US ft]	Latitude	Longitude
Slot Location	0.00	0.00	3253152.53	1577318.92	40.9145200°	-104.5840800°
Facility Reference Pt			3253152.53	1577318.92	40.9145200°	-104.5840800°
Field Reference Pt			3264604.58	1572171.06	40.9000600°	-104.5428500°

## WELLPATH DATUM

Calculation method	Minimum Curvature	Rig (23') (KB) to Facility Vertical Datum	5626.00ft
Horizontal Reference Pt	Slot	Rig (23') (KB) to Mean Sea Level	5626.00ft
Vertical Reference Pt	Rig (23') (KB)	Rig (23') (KB) to Ground Level at Slot (SLOT#01 SALT RANCH FEE #201-1830H (332'FSL & 953'FEL,SEC.18))	5626.00ft
MD Reference Pt	Rig (23') (KB)		
Field Vertical Reference	Mean Sea Level		

## POSITIONAL UNCERTAINTY CALCULATION SETTINGS

Ellipse Confidence Limit	3.50 Std Dev	Ellipse Start MD	23.00ft	Surface Position Uncertainty	included
Declination	7.96° East of TN	Dip Angle	67.07°	Mag Field Strength	52252 nT
Slot Surface Uncertainty @1SD		Horizontal	0.100ft	Vertical	1.000ft
Facility Surface Uncertainty @1SD		Horizontal	8.200ft	Vertical	3.000ft

Positional Uncertainty values in the WELLPATH DATA table are the projection of the ellipsoid of uncertainty onto the vertical and horizontal planes



# Closest Approach Clearance Summary Report

SALT RANCH FEE #201-1830H PWP Rev-A.0 - SPE WPTS  
Stop Drilling HSE Risk (2017)

Page 2 of 2



REFERENCE WELLPATH IDENTIFICATION			
Operator	UPLAND EXPLORATION	Well	SALT RANCH FEE #201-1830H
Field	WELD COUNTY (TRUE NORTH NAD 83)	API/Legal	
Facility	SEC.18-T11N-R64W	Wellbore	SALT RANCH FEE #201-1830H PWB
Slot	SLOT#01 SALT RANCH FEE #201-1830H (332'FSL & 953'FEL,SEC.18)		

PROXIMITY-SCAN RULE			
Rule Name	SPE WPTS Stop Drilling HSE Risk (2017)	Rule Based On	Ratio
Plane of Rule	Closest Approach	Threshold Value	1.00
Include Casing & Hole Size	yes	Apply Cone of Safety	no

HOLE & CASING SECTIONS									
- Ref Wellbore: SALT RANCH FEE #201-1830H PWB Ref Wellpath: SALT RANCH FEE #201-1830H PWP Rev-A.0									
String/Diameter	Start MD [ft]	End MD [ft]	Interval [ft]	Start TVD [ft]	End TVD [ft]	Start N/S [ft]	Start E/W [ft]	End N/S [ft]	End E/W [ft]
9.625in Casing Surface	23.00	1500.00	1477.00	23.00	1500.00	0.00	0.00	0.00	0.00

SURVEY PROGRAM -				
Ref Wellbore: SALT RANCH FEE #201-1830H PWB Ref Wellpath: SALT RANCH FEE #201-1830H PWP Rev-A.0				
Start MD [ft]	End MD [ft]	Positional Uncertainty Model	Log Name/Comment	Wellbore
23.00	1500.00	BH NaviTrak (2019) (Axial)		SALT RANCH FEE #201-1830H PWB
1500.00	18268.65	BH AutoTrak Curve/eXpress (2019) (Short spacing)		SALT RANCH FEE #201-1830H PWB

CALCULATION RANGE & CUTOFF		
From: 23.00ft MD	To: 18268.65ft MD	C-C Cutoff: (none)

OFFSET WELL CLEARANCE SUMMARY (1 Offset Wellpath selected) Ratios are calculated in Closest Approach plane												
Offset Facility	Offset Slot	Offset Well	Offset Wellbore	Offset Wellpath	Wellbore Status	C-C Clearance Distance			Rule Separation Ratio			
						Ref MD [ft]	Min C-C Clear Dist [ft]	Diverging from MD [ft]	Ref MD of Min Ratio [ft]	Min Ratio	Min Ratio Dvrg from [ft]	Rule Status
SEC.18-T11N-R64W	SLOT#02 SALT RANCH FEE #207-2029H (331'FSL & 938'FEL,SEC.18)	SALT RANCH FEE #207-2029H	SALT RANCH FEE #207-2029H PWB	SALT RANCH FEE #207-2029H PWP Rev-A.0	Planned	23.00	16.58	18223.00	1670.14	0.89	18268.65	FAIL