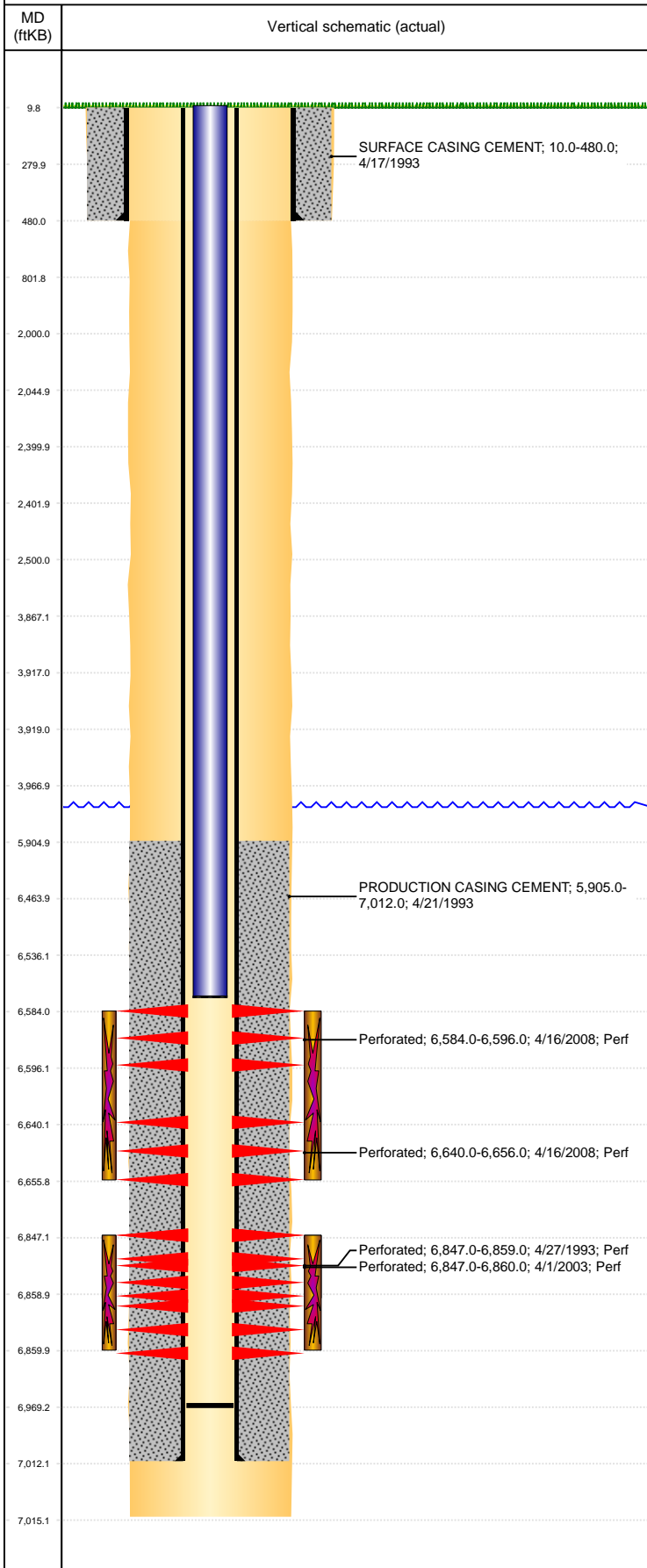


Well Name: CODY WHITE D03-01

VERTICAL, ORIGINAL HOLE, 2/28/2022 2:18:22 PM



Well Header									
API 05-123-16940		Business Unit DJ BASIN			District 15		Well Config VERTICAL		
KB - GL / MSL (ft... 10.00		Spud Date 4/16/1993		P & A Date		Well Production Status PR			SoRT No
Comment probable Nio breakthrough @ the 2112 clean bbl, 4/03									
Surface Location (Congressional)									
Qtr 3 NE	Qtr 4 NE	Section 3	Twnshp 3	Twنش... N	Range 64	Rng E /... W	Actual Latitude (°) 40.25994047	Actual Longitude (°) -104.53004350	
Wellbore Sections									
Section Des			Size (in)			Act Top, MD (ftKB)		Act Btm, MD (ftKB)	
SURFACE			12 1/4			10		480	
PRODUCTION			7 7/8			480		7,015	
Casing Strings									
Csg Des		Run Date		OD (in)	Wt/Len (lb/ft)	Grade	Top, MD (ftKB)	MD (ftKB)	
Surface Casing		4/17/1993		8 5/8	24.00		10.0	480.0	
Production Casing		4/22/1993		2 7/8	6.50	N-80	10.0	7,012.0	
Cement									
Des				Start Date		Top (ftKB)		Btm (ftKB)	
SURFACE CASING CEMENT				4/17/1993		10.0		480.0	
PRODUCTION CASING CEMENT				4/21/1993		5,905.0		7,012.0	
Zone Statuses									
Zone Name	Status Date	Status	Fluid Type	Job			Prod Method		
CODELL	4/14/2008	SI		RECOMPLETION, 4/14/2008 12:00					
CODELL	5/20/2008	PR		RECOMPLETION, 4/14/2008 12:00					
NIOBRARA	5/2/2008	PR		RECOMPLETION, 4/14/2008 12:00					
NIOBRARA	5/20/2008	PR		RECOMPLETION, 4/14/2008 12:00					
Perforation Data									
Linked Zone		Bnch/Stg	Entered Shot Total	Top (ftKB)		Btm (ftKB)		Date	
NIOBRARA, ORIGINAL HOLE		A	48	6,584.00		6,596.00		4/16/2008	
NIOBRARA, ORIGINAL HOLE		B	56	6,640.00		6,656.00		4/16/2008	
CODELL, ORIGINAL HOLE			48	6,847.00		6,859.00		4/27/1993	
CODELL, ORIGINAL HOLE			56	6,847.00		6,860.00		4/1/2003	
Stimulation Intervals									
Zone			Start Date			Top (ftKB)		Btm (ftKB)	
NIOBRARA, ORIGINAL HOLE			5/1/2008			6,584.0		6,656.0	
CODELL, ORIGINAL HOLE			4/27/1993			6,847.0		6,859.0	
CODELL, ORIGINAL HOLE			4/10/2003			6,847.0		6,860.0	
Other In Hole									
Run Date		Des			Make		OD (in)	Top (ftKB)	Btm (ftKB)
Logs									
Date		Type				Top, MD (ftKB)		Btm, MD (ftKB)	
4/22/1993		COMPENSATED DENSITY GAMMA RAY CALIPER				3,700.0		7,029.6	
4/22/1993		DUAL INDUCTION GUARD LOG				3,700.0		7,029.6	
4/26/1993		SONIC CEMENT BOND				5,800.0		6,953.0	
Plug Back Total Depths									
Date		Type		Com				Depth (ftKB)	
5/16/2008		SAND PLUG						6,620.0	
5/19/2008		FILL		109' OF RAT HOLE				6,969.0	