

Facility Owner/Operator Name: Wexpro Company

Land Description : SW NW Sec.27-12N-97W Lease # COD02964 Unit # COC47639X  
Moffat County, CO

I-C  
Jack's Draw Well No. 9

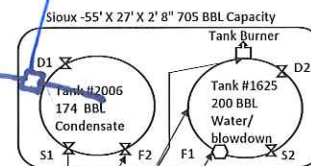
Direction of flow

North

*Knockout Tank*

*Combustor*  
*75'*

*Scada Wire*



Wexpro FMP#

Water Dump Line

Blowdown Line

Fuel Gas Line

Condensate Line

Sales Gas Line to North Side Compressor Station

Combination Unit  
Dehydrator - Wexpro/  
Out of service  
Separator - Wexpro

Wexpro Master Meter FMP#



500 gallon methanol  
tank in containment  
8' in diameter X 2' in depth  
752 gallon capacity

Wexpro ROC

Wexpro ROC

Production Line

Jack's Draw Well No. 9  
API H05-081-06040

See attachment (Page 2)

For valve positioning

Production, sales, and draining phases

Last Revised: 7/21/2020

Access Road