



Bayswater Exploration & Production LLC LONG STRING POST JOB REPORT

**SCHLOTTHAUER 23E-20-13C 05-123-49347
S:23 T:7N R:67W Weld CO**

CallSheet #: 77517
Proposal #: 53766



LONG STRING Post Job Report

Attention: Trevor Smith | (720) 335-9045 | trevor.smith@iptenergyservices.com

Bayswater Exploration & Production LLC

730 17TH STREET | DENVER, CO 80202

Dear Trevor Smith,

Thank you for the opportunity to provide cementing services on this well. American Cementing strives to achieve complete customer satisfaction. If you have any questions regarding the services or data provided, please contact American Cementing at any time.

Sincerely,

Scott Pollard

Sr. Account Manager | (303) 249-6761 | scott.pollard@americacementing.com

Field Office 1716 E Allison Rd, Cheyenne, WY 82007
Phone: (307) 414-0049

Job Details & Summary

Geometry

Type	Function	OD (in)	ID (in)	Weight (lb/ft)	Top (ft)	Bottom (ft)	Excess (%)
Casing	Outer	9.625	8.921	36	0	1600	0
Open Hole	Outer	n/a	8.5	n/a	1600	17375	7
Casing	Inner	5.5	4.778	20	0	17361.7	0

Equipment / People

Unit Type	Unit
Cement Trailer Float	CTF-007
Field Storage Silo	FSS(CTS)-463
Field Storage Silo	FSS(CTS)-459
Field Storage Silo	FSS(CTS)-051
AS Cement Trailer Float	CTF-9054
AS Cement Trailer Float	CTF-7145
AS Cement Trailer Float	CTF-018
Cement Trailer Float	CTF-341
AS Cement Trailer Float	CTF(FTF)-031
AS Cement Trailer Float	CTF-021
Cement Pump Float	CPF-182
Cement Utility Float	CUF(FIF)-159
Light Duty Vehicles	LDV-052

Timing

Event	Date/Time
Call Out	7/14/2021 20:00
Depart Facility	7/14/2021 22:00
On Location	7/15/2021 00:40
Rig Up Iron	7/15/2021 01:00
Job Started	7/15/2021 04:55
Job Completed	7/15/2021 08:15
Rig Down Iron	7/15/2021 09:10
Depart Location	7/15/2021 10:30

General Job Information

Metrics	Value
Well Fluid Density	10.2 lb/gal
Well Fluid Type	OBM
Rig Circulation Vol	3312 bbls
Rig Circulation Time	3 hours
Calculated Displacement	384.8 bbls
Actual Displacement	384 bbls
Total Spacer to Surface	80 bbls
Total CMT to Surface	44 bbls

Job Details

Metrics	Value
Flare Prior to Job	Yes
Flare During Job	No
Flare at End of Job	No
Well Full Prior to Job	Yes
Well Fluid Density Into Well	10.2 lb/gal
Well Fluid Density Out of Well	10.2 lb/gal

Job Details (cont.)

Metrics	Value
BHCT	220 °F
BHST	220 °F

Water Analysis

Metrics	Value	Recommended
Water Source	Upright Rig Tank	
Temperature	65 °F	50-80 °F
pH Level	7	5.5-8.5
Chlorides	2000 mg/L	0-3000 mg/L
Total Alkalinity	200	0-1000
Total Hardness	200 mg/L	0-500 mg/L
Carbonates	20 mg/L	0-100 mg/L
Sulfates	700 mg/L	0-1500 mg/L
Potassium	750 mg/L	0-3000 mg/L
Iron	50 mg/L	0-300 mg/L

Circulation

Lost Circulation Experienced
No

Job Execution Information

Fluid	Product	Function	Density (lb/gal)	Yield (ft ³ /sk)	Water Rq. (gal/sk)	Water Rq. (gal/bbl)	Volume (sks)	Volume (bbl)	Designed Top (ft)
1	EZ Spacer II	Spacer	12.00			29.92		40.00	0
2	EZ Spacer II	Spacer	11.50			29.92		20.00	0
3	EZ Spacer II	Spacer	11.00			29.92		20.00	0
4	ACem P100.3.01C	Lead	13.20	1.83	9.86		905.00	294.79	0
5	ACem P50.6.02C	Tail	13.50	1.48	7.45		1795.00	472.14	6536
6	Retarded Water + Chems	Displacement	8.37			41.43		10.00	16868
7	Water + Chems	DisplacementFinal	8.37			41.53		375.00	0

Job Fluid Details

Fluid	Type	Fluid	Product	Function	Conc.	Uom
1	Spacer	EZ Spacer II	WEIGHTING ADDITIVE, W-11	Heavyweight	242.31	lb/bbl
1	Spacer	EZ Spacer II	GW-86	Viscosifier	1.20	lb/bbl
1	Spacer	EZ Spacer II	R-31	Retarder	0.50	lb/bbl
1	Spacer	EZ Spacer II	R-7C	Retarder	2.00	lb/bbl
1	Spacer	EZ Spacer II	Surfactant, S-801c	Surfactant	1.00	gal/bbl
2	Spacer	EZ Spacer II	WEIGHTING ADDITIVE, W-11	Heavyweight	242.31	lb/bbl
2	Spacer	EZ Spacer II	GW-86	Viscosifier	1.20	lb/bbl
2	Spacer	EZ Spacer II	R-31	Retarder	0.50	lb/bbl
2	Spacer	EZ Spacer II	R-7C	Retarder	2.00	lb/bbl
2	Spacer	EZ Spacer II	Surfactant, S-801c	Surfactant	1.00	gal/bbl
3	Spacer	EZ Spacer II	WEIGHTING ADDITIVE, W-11	Heavyweight	242.31	lb/bbl
3	Spacer	EZ Spacer II	GW-86	Viscosifier	1.20	lb/bbl
3	Spacer	EZ Spacer II	R-31	Retarder	0.50	lb/bbl
3	Spacer	EZ Spacer II	R-7C	Retarder	2.00	lb/bbl
3	Spacer	EZ Spacer II	Surfactant, S-801c	Surfactant	1.00	gal/bbl
4	Lead	ACem P100.3.01C	ASTM TYPE III	Cement	100.00	%
4	Lead	ACem P100.3.01C	EC-2	BondEnhancer	3.00	%BWOB
4	Lead	ACem P100.3.01C	FL-66	FluidLoss	0.50	%BWOB
4	Lead	ACem P100.3.01C	FP-24	Defoamer	0.30	%BWOB
4	Lead	ACem P100.3.01C	GW-86	Viscosifier	0.10	%BWOB
4	Lead	ACem P100.3.01C	SR-20	Retarder	0.70	%BWOB
4	Lead	ACem P100.3.01C	STATIC FREE	Other	0.01	lb/sk
5	Tail	ACem P50.6.02C	CLASS G	Cement	50.00	%



5	Tail	ACem P50.6.02C	FLY ASH (ROCKIES)	Extender	50.00	%
5	Tail	ACem P50.6.02C	BENTONITE	Viscosifier	2.00	%BWOB
5	Tail	ACem P50.6.02C	FL-66	FluidLoss	0.20	%BWOB
5	Tail	ACem P50.6.02C	FP-24	Defoamer	0.30	%BWOB
5	Tail	ACem P50.6.02C	GW-86	Viscosifier	0.10	%BWOB
5	Tail	ACem P50.6.02C	SR-20	Retarder	0.10	%BWOB
5	Tail	ACem P50.6.02C	STATIC FREE	Other	0.01	lb/sk
6	Displacement	Retarded Water + Chems	BIOCIDE,BIOC11139W	Biocide	0.01	gal/bbl
6	Displacement	Retarded Water + Chems	CI-27	Other	0.21	gal/bbl
6	Displacement	Retarded Water + Chems	OXYGEN SCAVENGER, OS-30	Other	0.17	gal/bbl
6	Displacement	Retarded Water + Chems	ResCare CS-2	ClayProtection	0.08	gal/bbl
6	Displacement	Retarded Water + Chems	SR-61L	Retarder	0.10	gal/bbl
7	DisplacementFinal	Water + Chems	BIOCIDE,BIOC11139W	Biocide	0.01	gal/bbl
7	DisplacementFinal	Water + Chems	CI-27	Other	0.21	gal/bbl
7	DisplacementFinal	Water + Chems	OXYGEN SCAVENGER, OS-30	Other	0.17	gal/bbl
7	DisplacementFinal	Water + Chems	ResCare CS-2	ClayProtection	0.08	gal/bbl

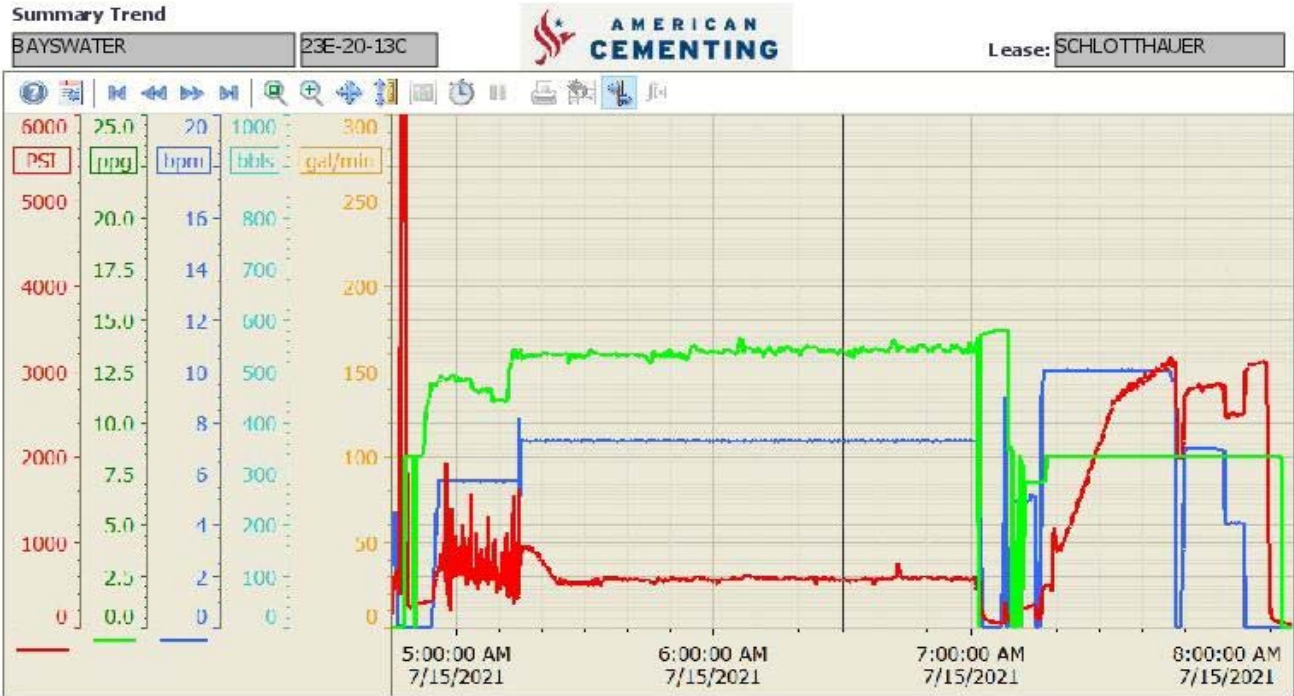
Job Logs

Line	Event	Date (MM/DD/YY)	Time (HH:MM)	Density (lb/gal)	Pump Rate (bpm)	Pump Volume (bbls)	Pipe Pressure (psi)	Annular Pressure (psi)	Comment
1	call out	7/14/2021	20:00						crew called out to location
2	on location	7/15/2021	00:40						crew on location , spot equipment
3	rig up	7/15/2021	01:00						rig up equipment, rig circulating out
4	safety meeting	7/15/2021	04:30						safety meeting with company man and rig crew
5	pressure test	7/15/2021	04:55	8.34	0.2	0.2	5700		pressure test lines to 5700 psi
6	spacer	7/15/2021	05:00	12	5.7	40	700		40 bbl spacer @ 12 # w/surfactants, samples taken and weight verified
7	spacer	7/15/2021	05:10	11.5	5.7	20	500		20 bbl spacer @ 11.5 # w/surfactants, samples taken and weight verified
8	spacer	7/15/2021	05:15	11	5.7	20	500		20 bbl spacer @ 11 # w/surfactants, samples taken and weight verified
9	lead	7/15/2021	05:19	13.2	7.3	294.8	480		lead cement: 905 sk / 294.8 bbl slurry / yield 1.83 / mix water 9.86 / wet and dry samples taken and weight verified every 100 bbl pumped
10	tail	7/15/2021	06:00	13.5	7.3	472.1	650		tail cement: 1795 sk / 472 bbl slurry / yield 1.48 / mix water 7.45 / dry and wet samples taken and weight verified every 100 bbl pumped
11	down / drop plug	7/15/2021	07:13						pumps down / drop plug
12	wash lines	7/15/2021	07:14						wash pumping lines to pit
13	displacement	7/15/2021	07:22	8.34	10	10	500		start displacement, first 10 bbl water retarder, continue with displacement chemicals
14	displacement	7/15/2021	07:25	8.34	30	10	1100		30 bbl on displacement , catch cement
15	displacement	7/15/2021	07:27	8.34	50	10	1150		50 bbl on displacement, 1150 psi , 10 bpm
16	displacement	7/15/2021	07:31	8.34	80	10	1500		80 bbl on displacement , 1500 psi , 10 bpm
17	displacement	7/15/2021	07:33	8.34	100	10	1700		100 bbl on displacement, 1700 psi
18	displacement	7/15/2021	07:35	8.34	120	10	2200		120 bbl on displacement, 2200 psi, 10 bpm
19	displacement	7/15/2021	07:38	8.34	150	10	2700		150 bbl on displacement, 2700 psi , 10 bpm
20	displacement	7/15/2021	07:43	8.34	200	10	2800		200 bbl on displacement, 2800 psi , 10
21	displacement	7/15/2021	07:48	8.34	250	10	3000		250 bbl on displacement , 3000 psi , 10 bpm
22	displacement	7/15/2021	07:52	8.34	280	10	3200		280 bbl on displacement , 3200 psi , 10 bpm
23	shutdown	7/15/2021	07:53	8.34	295				295 bbl on displacement , interface to surface, shut down to swap rig lines to pit
24	displacement	7/15/2021	07:55	8.34	295	7	2800		start pumping again, slowly bring up to 7 bpm , 2800 psi
25	displacement	7/15/2021	07:59	8.34	320	7	2800		320 bbl on displacement, 2800 psi, 7 bpm



26	displacement	7/15/2021	08:05	8.34	365	4	2300		365 bbl on displacement, slow down to 4 bpm, to land plug, 2300 psi
27	land plug	7/15/2021	08:10	8.34	384	4	2477-3015		land plug , bumped from 2477 psi to 3015 psi, hold for 5 minutes
28	check floats	7/15/2021	08:15				3015		check floats, 4.5 bbl back and holding
29	wash stack pipe	7/15/2021	08:30						wash stack pipe from rig
30	rig down	7/15/2021	09:10						rig down equipment
31	done	7/15/2021	10:30						done rigging down , location clean

Pump Diagrams



7/15/2021 9:10:00 AM