

# **BONANZA CREEK ENERGY**

**WELD COUNTY**

**SEC 30-T5N-R61W**

**STATE PRONGHORN FEDERAL 13-43-30HNB**

**OWB**

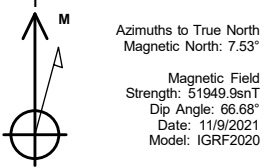
**Design: FINAL SURVEY**

## **Standard Survey Report**

**27 December, 2021**

Project: WELD COUNTY  
Site: SEC 30-T5N-R61W  
Well: STATE PRONGHORN FEDERAL 13-43-30HNB  
Wellbore: OWB  
Design: FINAL SURVEY

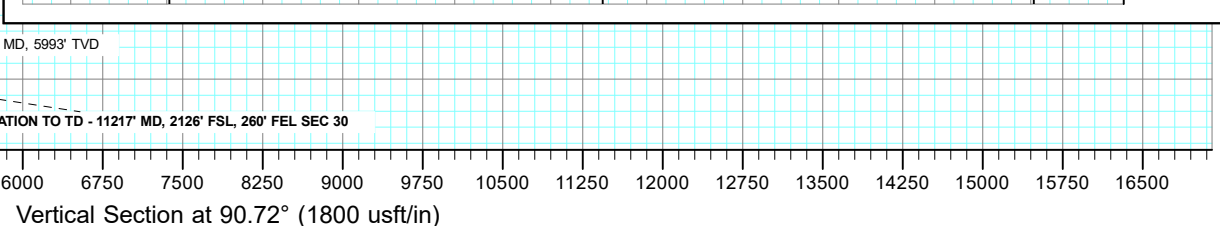
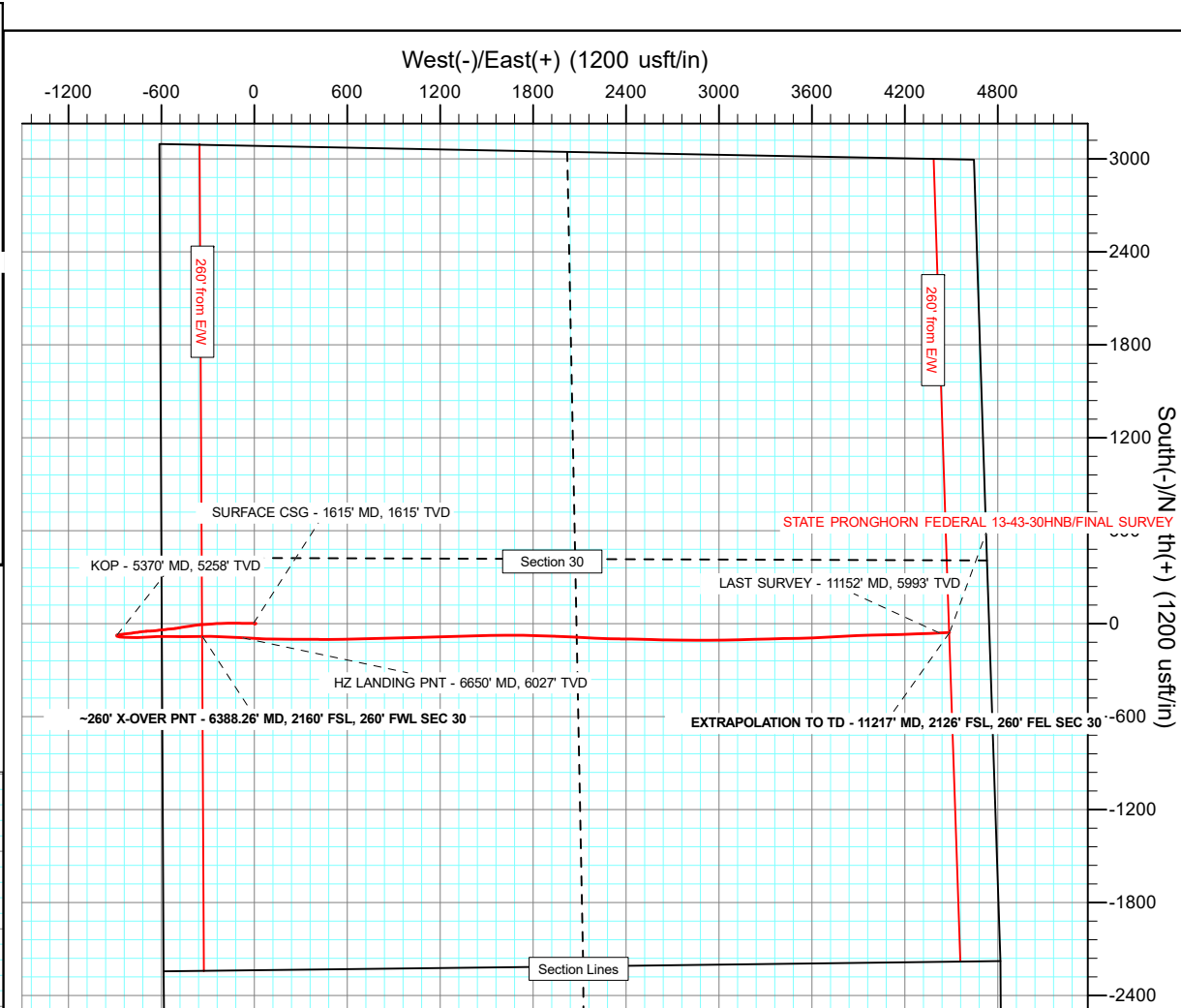
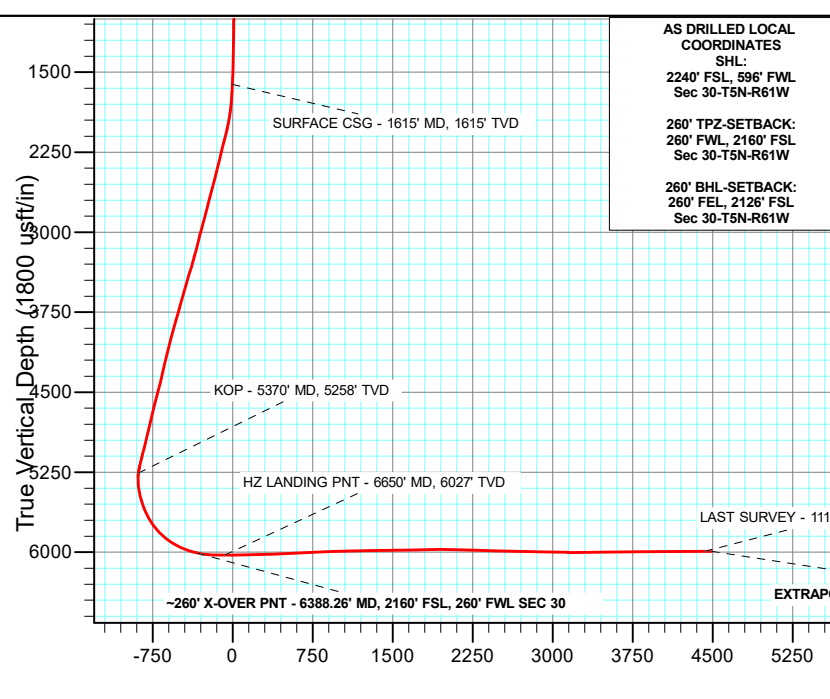
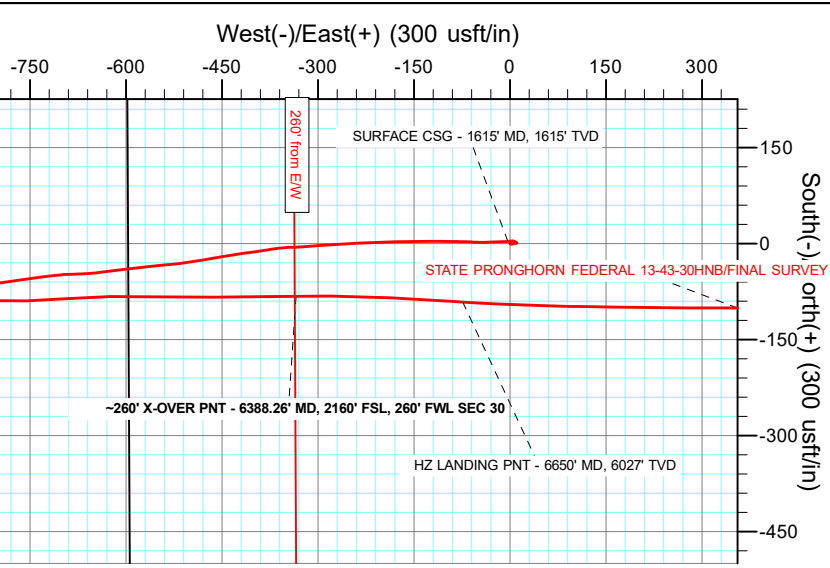
PROJECT DETAILS: WELD COUNTY  
Geodetic System: US State Plane 1983  
Datum: North American Datum 1983  
Ellipsoid: GRS 1980  
Zone: Colorado Northern Zone  
System Datum: Mean Sea Level



WELL DETAILS: STATE PRONGHORN FEDERAL 13-43-30HNB

+N/-S	+E/-W	Northing	Easting	4526.00	Latitude	Longitude	Slot
0.00	0.00	1380227.70	3345636.79		40.370490°N	104.259480°W	

MD	Inc	Azi	TVD	+N/-S	+E/-W	Vsect	Departure	Annotation
1615.00	2.87	267.55	1614.69	3.40	-3.71	-3.75	27.06	SURFACE CSG - 1615' MD, 1615' TVD
5370.00	7.94	255.16	5258.46	-72.75	-885.91	-884.93	912.96	KOP - 5370' MD, 5258' TVD
6388.26	76.90	89.38	6008.41	-82.19	-334.37	-333.32	1484.88	~260' X-OVER PNT - 6388.26' MD, 2160' FSL, 260' FWL SEC 30
6650.00	89.50	93.19	6026.79	-91.28	-74.18	-73.03	1744.94	HZ LANDING PNT - 6650' MD, 6027' TVD
11152.00	89.67	86.92	5992.50	-59.60	4424.39	4424.79	6245.54	LAST SURVEY - 11152' MD, 5993' TVD
11217.00	89.67	86.92	5992.88	-56.11	4489.30	4489.65	6310.54	EXTRAPOLATION TO TD - 11217' MD, 2126' FSL, 260' FEL SEC 30



## Survey Report

<b>Company:</b>	BONANZA CREEK ENERGY	<b>Local Co-ordinate Reference:</b>	Well STATE PRONGHORN FEDERAL 13-43-30HNB
<b>Project:</b>	WELD COUNTY	<b>TVD Reference:</b>	KB 25' @ 4551.00usft
<b>Site:</b>	SEC 30-T5N-R61W	<b>MD Reference:</b>	KB 25' @ 4551.00usft
<b>Well:</b>	STATE PRONGHORN FEDERAL 13-43-30HNB	<b>North Reference:</b>	True
<b>Wellbore:</b>	OWB	<b>Survey Calculation Method:</b>	Minimum Curvature
<b>Design:</b>	FINAL SURVEY	<b>Database:</b>	EDT_32Bit_ODBC

<b>Project</b>	WELD COUNTY		
<b>Map System:</b>	US State Plane 1983	<b>System Datum:</b>	Mean Sea Level
<b>Geo Datum:</b>	North American Datum 1983		
<b>Map Zone:</b>	Colorado Northern Zone		Using geodetic scale factor

Site		SEC 30-T5N-R61W			
Site Position:		Northing:	1,380,645.52 usft	Latitude:	40.371660°N
From:	Lat/Long	Easting:	3,345,031.84 usft	Longitude:	104.261630°W
Position Uncertainty:	0.00 usft	Slot Radius:	13.200 in	Grid Convergence:	0.80 °

Well	STATE PRONGHORN FEDERAL 13-43-30HNB					
Well Position	+N/-S	0.00 usft	Northing:	1,380,227.70 usft	Latitude:	40.370490°N
	+E/-W	0.00 usft	Easting:	3,345,636.79 usft	Longitude:	104.259480°W
Position Uncertainty		0.00 usft	Wellhead Elevation:	usft	Ground Level:	4,526.00 usft

<b>Wellbore</b>	OWB				
<b>Magnetics</b>	<b>Model Name</b>	<b>Sample Date</b>	<b>Declination (°)</b>	<b>Dip Angle (°)</b>	<b>Field Strength (nT)</b>
	IGRF2020	11/9/2021	7.54	66.68	51,949.89005491

<b>Design</b>	FINAL SURVEY				
<b>Audit Notes:</b>					
<b>Version:</b>	1.0	<b>Phase:</b>	ACTUAL	<b>Tie On Depth:</b>	0.00
<b>Vertical Section:</b>	<b>Depth From (TVD) (usft)</b>	<b>+N/-S (usft)</b>	<b>+E/-W (usft)</b>	<b>Direction (°)</b>	
	0.00	0.00	0.00	90.72	

<b>Survey Program</b>	<b>Date</b>	12/27/2021			
<b>From (usft)</b>	<b>To (usft)</b>	<b>Survey (Wellbore)</b>	<b>Tool Name</b>	<b>Description</b>	
158.00	1,567.00	SURFACE SURVEY (OWB)	MWD OWSG	OWSG MWD - Standard	
1,665.00	11,217.00	FINAL SURVEY (OWB)	MWD OWSG	OWSG MWD - Standard	

<b>Survey</b>										
<b>Measured Depth (usft)</b>	<b>Inclination (°)</b>	<b>Azimuth (°)</b>	<b>Vertical Depth (usft)</b>	<b>+N/-S (usft)</b>	<b>+E/-W (usft)</b>	<b>Vertical Section (usft)</b>	<b>Dogleg Rate (°/100ft)</b>	<b>Build Rate (°/100ft)</b>	<b>Turn Rate (°/100ft)</b>	
0.00	0.00	0.00	0.00	0.00	0.00	0.00	0.00	0.00	0.00	
158.00	0.35	112.20	158.00	-0.18	0.45	0.45	0.22	0.22	0.00	
249.00	0.44	160.75	249.00	-0.62	0.82	0.83	0.37	0.10	53.35	
341.00	0.35	76.87	341.00	-0.89	1.21	1.22	0.58	-0.10	-91.17	
425.00	0.70	83.20	424.99	-0.77	1.97	1.98	0.42	0.42	7.54	
512.00	0.62	93.04	511.99	-0.73	2.97	2.98	0.16	-0.09	11.31	
598.00	1.14	74.59	597.98	-0.53	4.26	4.26	0.68	0.60	-21.45	
685.00	1.23	79.16	684.96	-0.12	6.01	6.01	0.15	0.10	5.25	
770.00	1.14	77.40	769.94	0.23	7.73	7.73	0.11	-0.11	-2.07	

## Survey Report

<b>Company:</b>	BONANZA CREEK ENERGY	<b>Local Co-ordinate Reference:</b>	Well STATE PRONGHORN FEDERAL 13-43-30HNB
<b>Project:</b>	WELD COUNTY	<b>TVD Reference:</b>	KB 25' @ 4551.00usft
<b>Site:</b>	SEC 30-T5N-R61W	<b>MD Reference:</b>	KB 25' @ 4551.00usft
<b>Well:</b>	STATE PRONGHORN FEDERAL 13-43-30HNB	<b>North Reference:</b>	True
<b>Wellbore:</b>	OWB	<b>Survey Calculation Method:</b>	Minimum Curvature
<b>Design:</b>	FINAL SURVEY	<b>Database:</b>	EDT_32Bit_ODBC

Survey										
Measured Depth (usft)	Inclination (°)	Azimuth (°)	Vertical Depth (usft)	+N/-S (usft)	+E/-W (usft)	Vertical Section (usft)	Dogleg Rate (°/100ft)	Build Rate (°/100ft)	Turn Rate (°/100ft)	
855.00	1.41	75.64	854.92	0.68	9.57	9.56	0.32	0.32	-2.07	
939.00	0.35	13.06	938.91	1.18	10.63	10.61	1.53	-1.26	-74.50	
1,024.00	0.97	304.33	1,023.90	1.84	10.09	10.07	1.06	0.73	-80.86	
1,112.00	0.97	288.16	1,111.89	2.50	8.77	8.74	0.31	0.00	-18.37	
1,197.00	0.97	300.64	1,196.88	3.09	7.47	7.43	0.25	0.00	14.68	
1,285.00	1.14	286.93	1,284.86	3.72	5.99	5.94	0.34	0.19	-15.58	
1,370.00	1.23	286.93	1,369.85	4.23	4.31	4.25	0.11	0.11	0.00	
1,455.00	1.32	250.54	1,454.83	4.17	2.51	2.46	0.94	0.11	-42.81	
1,540.00	2.29	258.98	1,539.78	3.52	-0.08	-0.12	1.18	1.14	9.93	
1,567.00	2.90	271.11	1,566.76	3.43	-1.29	-1.34	3.03	2.26	44.93	
1,615.00	2.87	267.55	1,614.69	3.40	-3.71	-3.75	0.38	-0.06	-7.41	
SURFACE CSG - 1615' MD, 1615' TVD										
1,665.00	2.85	263.78	1,664.63	3.22	-6.19	-6.23	0.38	-0.04	-7.54	
1,760.00	4.31	269.75	1,759.44	2.94	-12.11	-12.15	1.58	1.54	6.28	
1,854.00	7.15	267.36	1,852.97	2.66	-21.49	-21.52	3.03	3.02	-2.54	
1,949.00	10.06	268.33	1,946.89	2.14	-35.69	-35.72	3.07	3.06	1.02	
2,044.00	12.96	272.26	2,039.97	2.32	-54.64	-54.66	3.16	3.05	4.14	
2,139.00	14.87	271.23	2,132.17	3.01	-77.47	-77.50	2.03	2.01	-1.08	
2,234.00	13.95	270.12	2,224.19	3.29	-101.11	-101.14	1.01	-0.97	-1.17	
2,330.00	13.70	270.01	2,317.40	3.32	-124.05	-124.08	0.26	-0.26	-0.11	
2,425.00	13.39	271.08	2,409.76	3.53	-146.30	-146.33	0.42	-0.33	1.13	
2,520.00	14.98	268.21	2,501.86	3.35	-169.57	-169.60	1.83	1.67	-3.02	
2,615.00	14.78	267.81	2,593.68	2.50	-193.95	-193.96	0.24	-0.21	-0.42	
2,710.00	14.50	267.96	2,685.59	1.62	-217.94	-217.94	0.30	-0.29	0.16	
2,805.00	14.11	268.07	2,777.65	0.80	-241.40	-241.39	0.41	-0.41	0.12	
2,900.00	15.58	265.29	2,869.48	-0.63	-265.69	-265.66	1.72	1.55	-2.93	
2,995.00	15.22	265.38	2,961.06	-2.69	-290.83	-290.78	0.38	-0.38	0.09	
3,118.00	14.31	266.45	3,080.00	-4.93	-322.10	-322.01	0.77	-0.74	0.87	
3,214.00	14.38	268.27	3,173.01	-6.02	-345.86	-345.75	0.48	0.07	1.90	
3,309.00	16.09	260.91	3,264.68	-8.46	-370.65	-370.52	2.71	1.80	-7.75	
3,404.00	16.68	261.41	3,355.82	-12.57	-397.13	-396.94	0.64	0.62	0.53	
3,499.00	16.70	261.60	3,446.81	-16.61	-424.12	-423.87	0.06	0.02	0.20	
3,594.00	16.44	261.17	3,537.87	-20.66	-450.90	-450.61	0.30	-0.27	-0.45	
3,689.00	16.10	260.59	3,629.07	-24.88	-477.18	-476.83	0.40	-0.36	-0.61	
3,784.00	15.62	260.18	3,720.45	-29.21	-502.78	-502.37	0.52	-0.51	-0.43	
3,879.00	16.27	265.10	3,811.80	-32.53	-528.64	-528.19	1.58	0.68	5.18	
3,974.00	15.57	264.25	3,903.15	-34.95	-554.59	-554.11	0.78	-0.74	-0.89	
4,069.00	15.10	263.61	3,994.77	-37.60	-579.57	-579.05	0.53	-0.49	-0.67	
4,164.00	14.42	263.52	4,086.64	-40.31	-603.62	-603.07	0.72	-0.72	-0.09	
4,259.00	13.41	262.07	4,178.85	-43.17	-626.28	-625.70	1.12	-1.06	-1.53	
4,355.00	12.57	263.89	4,272.39	-45.82	-647.70	-647.07	0.97	-0.87	1.90	
4,450.00	13.57	267.73	4,364.93	-47.36	-669.11	-668.47	1.39	1.05	4.04	

# Survey Report

<b>Company:</b>	BONANZA CREEK ENERGY	<b>Local Co-ordinate Reference:</b>	Well STATE PRONGHORN FEDERAL 13-43-30HNB
<b>Project:</b>	WELD COUNTY	<b>TVD Reference:</b>	KB 25' @ 4551.00usft
<b>Site:</b>	SEC 30-T5N-R61W	<b>MD Reference:</b>	KB 25' @ 4551.00usft
<b>Well:</b>	STATE PRONGHORN FEDERAL 13-43-30HNB	<b>North Reference:</b>	True
<b>Wellbore:</b>	OWB	<b>Survey Calculation Method:</b>	Minimum Curvature
<b>Design:</b>	FINAL SURVEY	<b>Database:</b>	EDT_32Bit_ODBC

Survey									
Measured Depth (usft)	Inclination (°)	Azimuth (°)	Vertical Depth (usft)	+N/-S (usft)	+E/-W (usft)	Vertical Section (usft)	Dogleg Rate (°/100ft)	Build Rate (°/100ft)	Turn Rate (°/100ft)
4,545.00	14.80	268.03	4,457.03	-48.22	-692.38	-691.72	1.30	1.29	0.32
4,640.00	14.45	262.24	4,548.96	-50.23	-716.25	-715.57	1.58	-0.37	-6.09
4,735.00	13.77	262.00	4,641.09	-53.41	-739.19	-738.47	0.72	-0.72	-0.25
4,831.00	13.71	263.26	4,734.34	-56.33	-761.80	-761.04	0.32	-0.06	1.31
4,925.00	13.52	260.63	4,825.70	-59.43	-783.71	-782.90	0.69	-0.20	-2.80
5,020.00	13.82	262.97	4,918.01	-62.63	-805.92	-805.08	0.66	0.32	2.46
5,115.00	13.75	264.26	5,010.28	-65.14	-828.42	-827.54	0.33	-0.07	1.36
5,210.00	14.83	263.05	5,102.34	-67.75	-851.72	-850.81	1.18	1.14	-1.27
5,305.00	12.95	262.36	5,194.55	-70.63	-874.34	-873.39	1.99	-1.98	-0.73
5,370.00	7.94	255.16	5,258.46	-72.75	-885.91	-884.93	7.95	-7.71	-11.08
KOP - 5370' MD, 5258' TVD									
5,399.00	5.79	248.01	5,287.25	-73.81	-889.20	-888.21	7.95	-7.40	-24.64
5,494.00	9.54	121.34	5,381.81	-79.73	-886.91	-885.84	14.52	3.95	-133.34
5,589.00	12.98	96.73	5,475.02	-85.08	-869.57	-868.44	6.14	3.62	-25.91
5,684.00	21.27	93.14	5,565.73	-87.28	-841.72	-840.57	8.79	8.73	-3.78
5,779.00	27.42	92.34	5,652.24	-89.12	-802.62	-801.45	6.48	6.47	-0.84
5,874.00	32.00	88.67	5,734.74	-89.42	-755.57	-754.40	5.19	4.82	-3.86
5,969.00	45.07	85.52	5,808.90	-86.20	-696.62	-695.49	13.91	13.76	-3.32
6,064.00	52.92	88.96	5,871.19	-82.88	-625.08	-624.00	8.70	8.26	3.62
6,159.00	57.66	91.31	5,925.27	-83.11	-547.02	-545.94	5.39	4.99	2.47
6,253.00	69.10	89.71	5,967.32	-83.80	-463.13	-462.05	12.26	12.17	-1.70
6,348.00	73.19	88.96	5,998.02	-82.75	-373.26	-372.19	4.37	4.31	-0.79
6,388.26	76.90	89.38	6,008.41	-82.19	-334.37	-333.32	9.27	9.21	1.05
~260' X-OVER PNT - 6388.26' MD, 2160' FSL, 260' FWL SEC 30									
6,443.00	81.94	89.94	6,018.46	-81.87	-280.58	-279.53	9.27	9.21	1.02
6,538.00	89.37	93.46	6,025.65	-84.69	-185.98	-184.90	8.65	7.82	3.71
6,633.00	89.44	93.33	6,026.64	-90.32	-91.15	-90.01	0.16	0.07	-0.14
6,650.00	89.50	93.19	6,026.80	-91.28	-74.18	-73.03	0.92	0.38	-0.84
HZ LANDING PNT - 6650' MD, 6027' TVD									
6,728.00	89.80	92.53	6,027.27	-95.17	3.72	4.91	0.92	0.38	-0.84
6,823.00	90.82	91.02	6,026.75	-98.12	98.67	99.89	1.92	1.07	-1.59
6,918.00	91.89	90.82	6,024.51	-99.64	193.63	194.86	1.15	1.13	-0.21
7,013.00	91.88	90.18	6,021.38	-100.47	288.58	289.81	0.67	-0.01	-0.67
7,108.00	92.36	90.48	6,017.87	-101.02	383.51	384.74	0.60	0.51	0.32
7,203.00	92.56	89.82	6,013.79	-101.27	478.42	479.65	0.73	0.21	-0.69
7,297.00	92.42	89.38	6,009.71	-100.61	572.33	573.54	0.49	-0.15	-0.47
7,392.00	92.49	88.80	6,005.64	-99.10	667.23	668.42	0.61	0.07	-0.61
7,487.00	92.99	87.36	6,001.10	-95.92	762.07	763.21	1.60	0.53	-1.52
7,582.00	92.68	88.34	5,996.40	-92.36	856.88	857.97	1.08	-0.33	1.03
7,677.00	91.38	89.26	5,993.03	-90.38	951.80	952.85	1.68	-1.37	0.97
7,772.00	91.25	89.52	5,990.85	-89.36	1,046.77	1,047.80	0.31	-0.14	0.27
7,867.00	91.59	88.06	5,988.50	-87.36	1,141.72	1,142.72	1.58	0.36	-1.54
7,962.00	91.73	87.58	5,985.75	-83.75	1,236.61	1,237.56	0.53	0.15	-0.51

## Survey Report

<b>Company:</b>	BONANZA CREEK ENERGY	<b>Local Co-ordinate Reference:</b>	Well STATE PRONGHORN FEDERAL 13-43-30HNB
<b>Project:</b>	WELD COUNTY	<b>TVD Reference:</b>	KB 25' @ 4551.00usft
<b>Site:</b>	SEC 30-T5N-R61W	<b>MD Reference:</b>	KB 25' @ 4551.00usft
<b>Well:</b>	STATE PRONGHORN FEDERAL 13-43-30HNB	<b>North Reference:</b>	True
<b>Wellbore:</b>	OWB	<b>Survey Calculation Method:</b>	Minimum Curvature
<b>Design:</b>	FINAL SURVEY	<b>Database:</b>	EDT_32Bit_ODBC

Survey										
Measured Depth (usft)	Inclination (°)	Azimuth (°)	Vertical Depth (usft)	+N/-S (usft)	+E/-W (usft)	Vertical Section (usft)	Dogleg Rate (°/100ft)	Build Rate (°/100ft)	Turn Rate (°/100ft)	
8,057.00	90.42	89.41	5,983.96	-81.25	1,331.55	1,332.46	2.37	-1.38	1.93	
8,153.00	89.62	87.03	5,983.93	-78.27	1,427.50	1,428.36	2.62	-0.83	-2.48	
8,248.00	90.92	89.28	5,983.48	-75.21	1,522.44	1,523.26	2.74	1.37	2.37	
8,344.00	92.20	89.66	5,980.87	-74.33	1,618.40	1,619.20	1.39	1.33	0.40	
8,438.00	91.86	90.53	5,977.54	-74.48	1,712.34	1,713.13	0.99	-0.36	0.93	
8,533.00	90.68	91.92	5,975.43	-76.51	1,807.29	1,808.10	1.92	-1.24	1.46	
8,627.00	90.68	91.58	5,974.32	-79.38	1,901.24	1,902.08	0.36	0.00	-0.36	
8,722.00	88.88	92.85	5,974.68	-83.05	1,996.16	1,997.04	2.32	-1.89	1.34	
8,817.00	88.76	92.69	5,976.64	-87.64	2,091.03	2,091.96	0.21	-0.13	-0.17	
8,912.00	88.11	93.45	5,979.23	-92.73	2,185.86	2,186.84	1.05	-0.68	0.80	
9,005.00	87.89	91.00	5,982.48	-96.34	2,278.72	2,279.75	2.64	-0.24	-2.63	
9,101.00	89.01	90.67	5,985.08	-97.74	2,374.67	2,375.71	1.22	1.17	-0.34	
9,196.00	88.60	91.45	5,987.06	-99.49	2,469.64	2,470.69	0.93	-0.43	0.82	
9,291.00	88.11	91.59	5,989.78	-102.01	2,564.56	2,565.64	0.54	-0.52	0.15	
9,386.00	89.19	91.12	5,992.02	-104.26	2,659.51	2,660.60	1.24	1.14	-0.49	
9,480.00	88.70	90.57	5,993.75	-105.64	2,753.48	2,754.59	0.78	-0.52	-0.59	
9,576.00	88.46	90.70	5,996.13	-106.71	2,849.45	2,850.56	0.28	-0.25	0.14	
9,671.00	89.48	89.22	5,997.84	-106.64	2,944.43	2,945.53	1.89	1.07	-1.56	
9,766.00	88.75	89.02	5,999.31	-105.18	3,039.40	3,040.48	0.80	-0.77	-0.21	
9,860.00	88.17	88.76	6,001.83	-103.36	3,133.35	3,134.40	0.68	-0.62	-0.28	
9,955.00	90.94	88.21	6,002.57	-100.85	3,228.31	3,229.31	2.97	2.92	-0.58	
10,050.00	90.46	88.35	6,001.41	-98.00	3,323.26	3,324.22	0.53	-0.51	0.15	
10,144.00	91.03	89.26	6,000.19	-96.04	3,417.23	3,418.16	1.14	0.61	0.97	
10,240.00	91.28	88.69	5,998.25	-94.32	3,513.19	3,514.10	0.65	0.26	-0.59	
10,335.00	89.18	87.11	5,997.87	-90.84	3,608.12	3,608.97	2.77	-2.21	-1.66	
10,430.00	90.12	86.86	5,998.45	-85.84	3,702.98	3,703.77	1.02	0.99	-0.26	
10,524.00	90.96	87.73	5,997.57	-81.41	3,796.87	3,797.59	1.29	0.89	0.93	
10,619.00	90.87	86.30	5,996.05	-76.46	3,891.73	3,892.38	1.51	-0.09	-1.51	
10,714.00	91.03	89.44	5,994.47	-72.93	3,986.64	3,987.24	3.31	0.17	3.31	
10,810.00	90.34	89.19	5,993.33	-71.78	4,082.62	4,083.20	0.76	-0.72	-0.26	
10,905.00	90.22	87.96	5,992.86	-69.42	4,177.59	4,178.13	1.30	-0.13	-1.29	
11,000.00	90.18	87.79	5,992.53	-65.90	4,272.53	4,273.02	0.18	-0.04	-0.18	
11,096.00	90.03	87.78	5,992.35	-62.19	4,368.45	4,368.89	0.16	-0.16	-0.01	
11,152.00	89.67	86.92	5,992.50	-59.60	4,424.39	4,424.79	1.66	-0.64	-1.54	
LAST SURVEY - 11152' MD, 5993' TVD										
11,217.00	89.67	86.92	5,992.88	-56.11	4,489.30	4,489.65	0.00	0.00	0.00	
EXTRAPOLATION TO TD - 11217' MD, 2126' FSL, 260' FEL SEC 30										

## Survey Report

<b>Company:</b>	BONANZA CREEK ENERGY	<b>Local Co-ordinate Reference:</b>	Well STATE PRONGHORN FEDERAL 13-43-30HNB
<b>Project:</b>	WELD COUNTY	<b>TVD Reference:</b>	KB 25' @ 4551.00usft
<b>Site:</b>	SEC 30-T5N-R61W	<b>MD Reference:</b>	KB 25' @ 4551.00usft
<b>Well:</b>	STATE PRONGHORN FEDERAL 13-43-30HNB	<b>North Reference:</b>	True
<b>Wellbore:</b>	OWB	<b>Survey Calculation Method:</b>	Minimum Curvature
<b>Design:</b>	FINAL SURVEY	<b>Database:</b>	EDT_32Bit_ODBC

Design Targets									
Target Name	Dip Angle (°)	Dip Dir. (°)	TVD (usft)	+N/-S (usft)	+E/-W (usft)	Northing (usft)	Easting (usft)	Latitude	Longitude
STATE PRONGHORN F - hit/miss target - Shape	0.00	0.00	6,013.00	-80.23	4,488.96	1,380,210.27	3,350,126.25	40.370269°N	104.243370°W
- actual wellpath misses target center by 31.38usft at 11215.48usft MD (5992.87 TVD, -56.19 N, 4487.78 E)									
- Point									
STATE PRONGHORN F - actual wellpath misses target center by 22.21usft at 6392.39usft MD (6009.33 TVD, -82.14 N, -330.34 E)	0.00	0.00	6,031.00	-84.85	-334.37	1,380,138.18	3,345,303.65	40.370257°N	104.260680°W
- Point									

Design Annotations					
Measured Depth (usft)	Vertical Depth (usft)	Local Coordinates			
		+N/-S (usft)	+E/-W (usft)	Comment	
1,615.00	1,614.69	3.40	-3.71	SURFACE CSG - 1615' MD, 1615' TVD	
5,370.00	5,258.46	-72.75	-885.91	KOP - 5370' MD, 5258' TVD	
6,388.26	6,008.41	-82.19	-334.37	~260' X-OVER PNT - 6388.26' MD, 2160' FSL, 260' FWL SEC 30	
6,650.00	6,026.80	-91.28	-74.18	HZ LANDING PNT - 6650' MD, 6027' TVD	
11,152.00	5,992.50	-59.60	4,424.39	LAST SURVEY - 11152' MD, 5993' TVD	
11,217.00	5,992.88	-56.11	4,489.30	EXTRAPOLATION TO TD - 11217' MD, 2126' FSL, 260' FEL SEC 30	

Checked By: \_\_\_\_\_ Approved By: \_\_\_\_\_ Date: \_\_\_\_\_