



FORM F-108

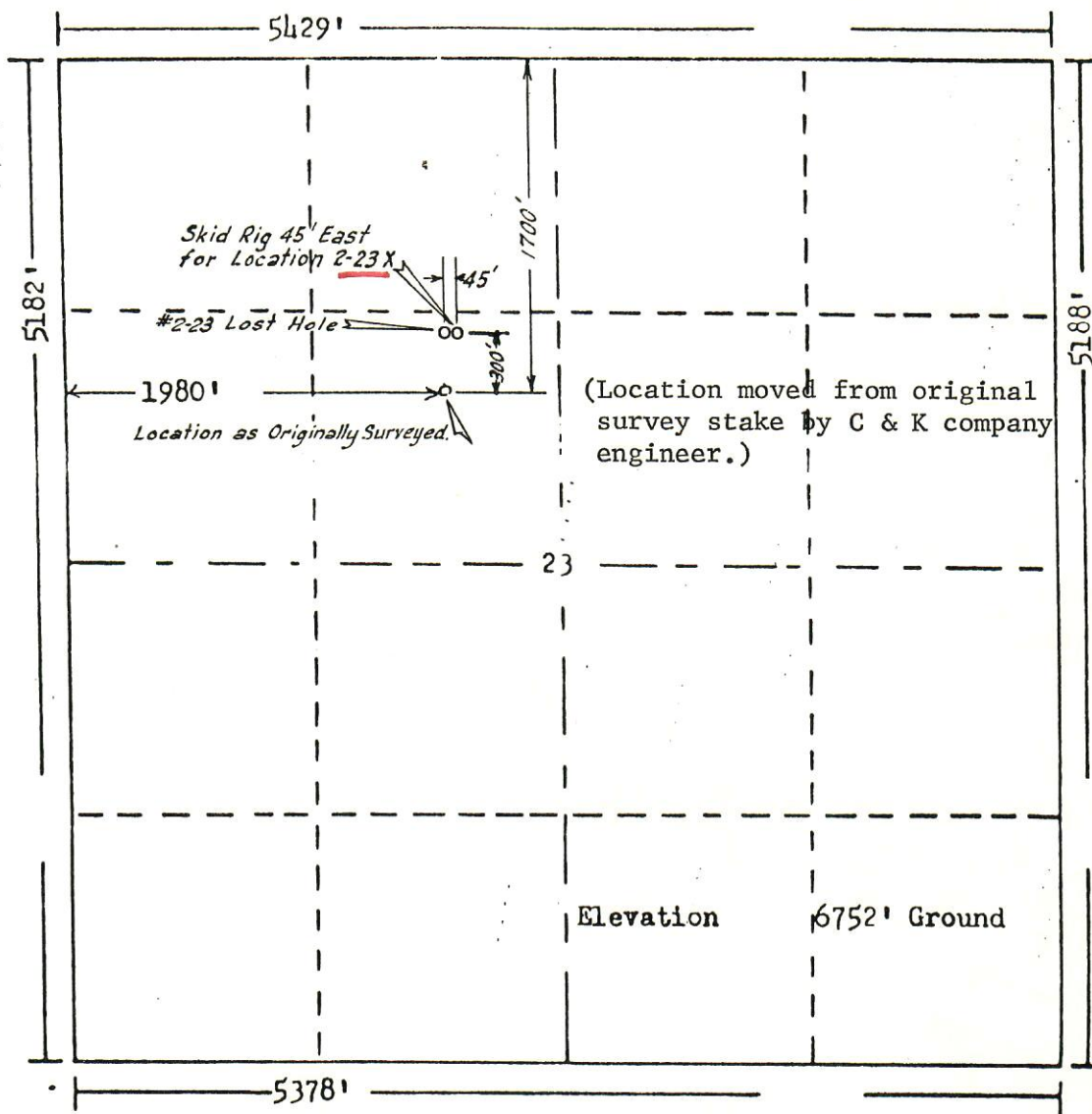


R. 91W.

RECEIVED

FEB 26 1975

GOLD, OIL &amp; GAS CONS. COMM.



Scale... 1" = 1000'

Powers Elevation Company, Inc. of Denver, Colorado  
 has in accordance with a request from Mr. Farmer  
 for C & K Petroleum  
 determined the location of #2-23 Federal  
 to be 1700' FN & 1980' FW Section 23 Township 9N.  
 Range 91W. of the 6th. Principal Meridian  
 Moffat County, Colorado

I hereby certify that this plat is an  
 accurate representation of a correct  
 survey showing the location of  
 #2-23 Federal

Date: 1-3-75

Daniel T. White  
 Licensed Land Surveyor No1671  
 State of Colorado

file