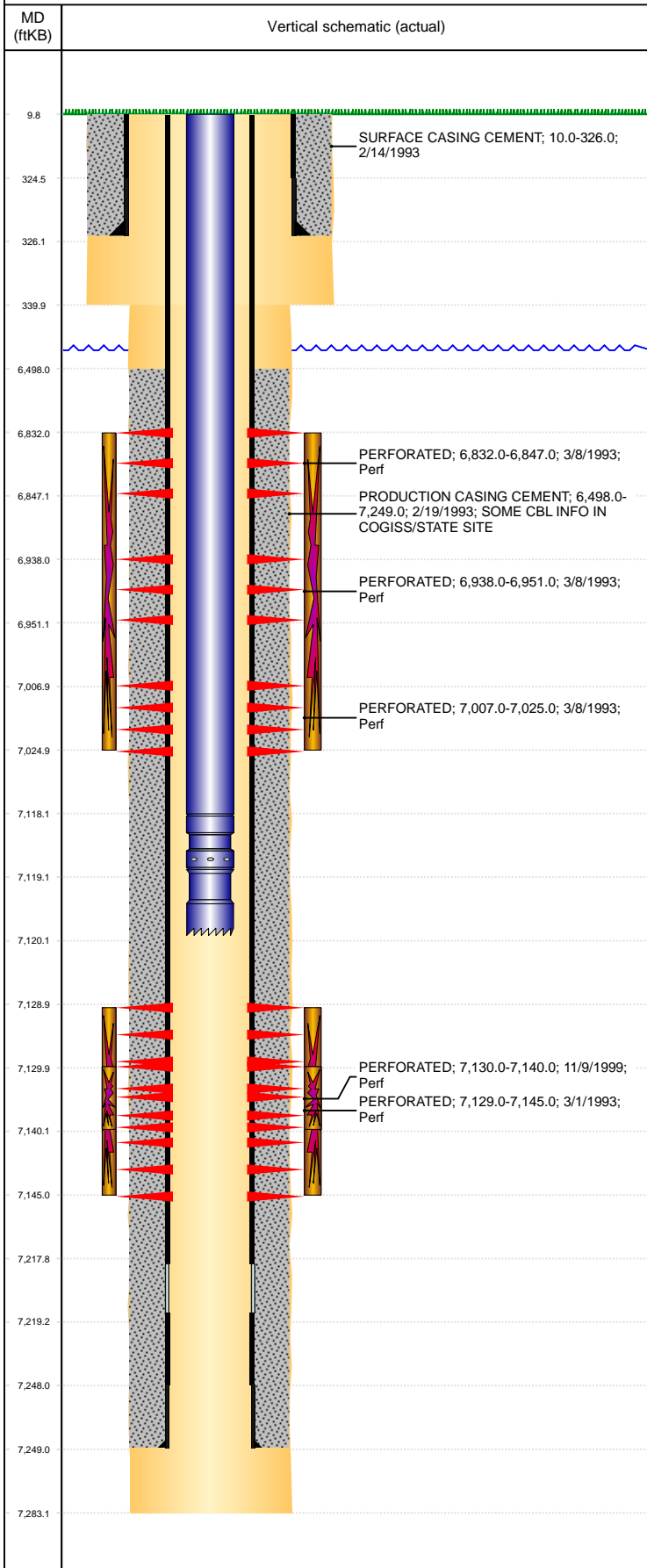


Well Name: GATES 6-17

VERTICAL, ORIGINAL HOLE, 1/11/2022 2:30:24 PM



Well Header									
API 05-123-16767		Business Unit DJ BASIN			District 15		Well Config VERTICAL		
KB - GL / MSL (ft... 10.00		Spud Date 2/14/1993		P & A Date		Well Production Status PR			SoRT No
Comment									
Surface Location (Congressional)									
Qtr 3 SE	Qtr 4 NW	Section 17	Twnshp 4	Twنش... N	Range 65	Rng E/... W	Actual Latitude (°) 40.31448130	Actual Longitude (°) -104.68980670	
Wellbore Sections									
Section Des			Size (in)			Act Top, MD (ftKB)		Act Btm, MD (ftKB)	
SURFACE			12 1/4			10		340	
PRODUCTION			7 7/8			340		7,283	
Casing Strings									
Csg Des			Run Date		OD (in)	Wt/Len (lb/ft)	Grade	Top, MD (ftKB)	MD (ftKB)
Surface			2/14/1993		8 5/8	24.00		10.0	326.0
Production			2/19/1993		4 1/2	11.60	I-70	10.0	7,249.0
Cement									
Des					Start Date		Top (ftKB)		Btm (ftKB)
SURFACE CASING CEMENT					2/14/1993		10.0		326.0
PRODUCTION CASING CEMENT					2/19/1993		6,498.0		7,249.0
Zone Statuses									
Zone Name	Status Date	Status	Fluid Type	Job				Prod Method	
NIOBRARA	3/22/1993	PR		DRILLING/COMPLETION - ORIGINAL, 2/14/1993...				Flowing	
NIOBRARA	2/22/2014	PR						Flowing	
CODELL	2/22/2014	PR						Flowing	
CODELL	1/19/2015	PR							
Perforation Data									
Linked Zone		Bnch/Stg	Entered Shot Total	Top (ftKB)		Btm (ftKB)		Date	
NIOBRARA, ORIGINAL HOLE		A	15	6,832.00		6,847.00		3/8/1993	
NIOBRARA, ORIGINAL HOLE		B	13	6,938.00		6,951.00		3/8/1993	
NIOBRARA, ORIGINAL HOLE		C	18	7,007.00		7,025.00		3/8/1993	
CODELL, ORIGINAL HOLE			32	7,129.00		7,145.00		3/1/1993	
CODELL, ORIGINAL HOLE			40	7,130.00		7,140.00		11/9/1999	
Stimulation Intervals									
Zone				Start Date		Top (ftKB)		Btm (ftKB)	
NIOBRARA, ORIGINAL HOLE				3/9/1993		6,832.0		7,025.0	
NIOBRARA, ORIGINAL HOLE				3/4/1993		7,129.0		7,145.0	
CODELL, ORIGINAL HOLE				11/11/1999		7,130.0		7,140.0	
CODELL, ORIGINAL HOLE				3/14/2006		7,130.0		7,140.0	
Other In Hole									
Run Date		Des			Make		OD (in)	Top (ftKB)	Btm (ftKB)
Logs									
Date		Type					Top, MD (ftKB)		Btm, MD (ftKB)
2/19/1993		GAMMA RAY					4,300.0		7,281.0
2/19/1993		INDUCTION					326.0		7,281.0
Plug Back Total Depths									
Date		Type			Com				Depth (ftKB)
2/19/1993		FLOAT COLLAR			3/9/06 CIRCULATED NO DEPTH GIVEN				7,225.0
3/9/2006		FILL							