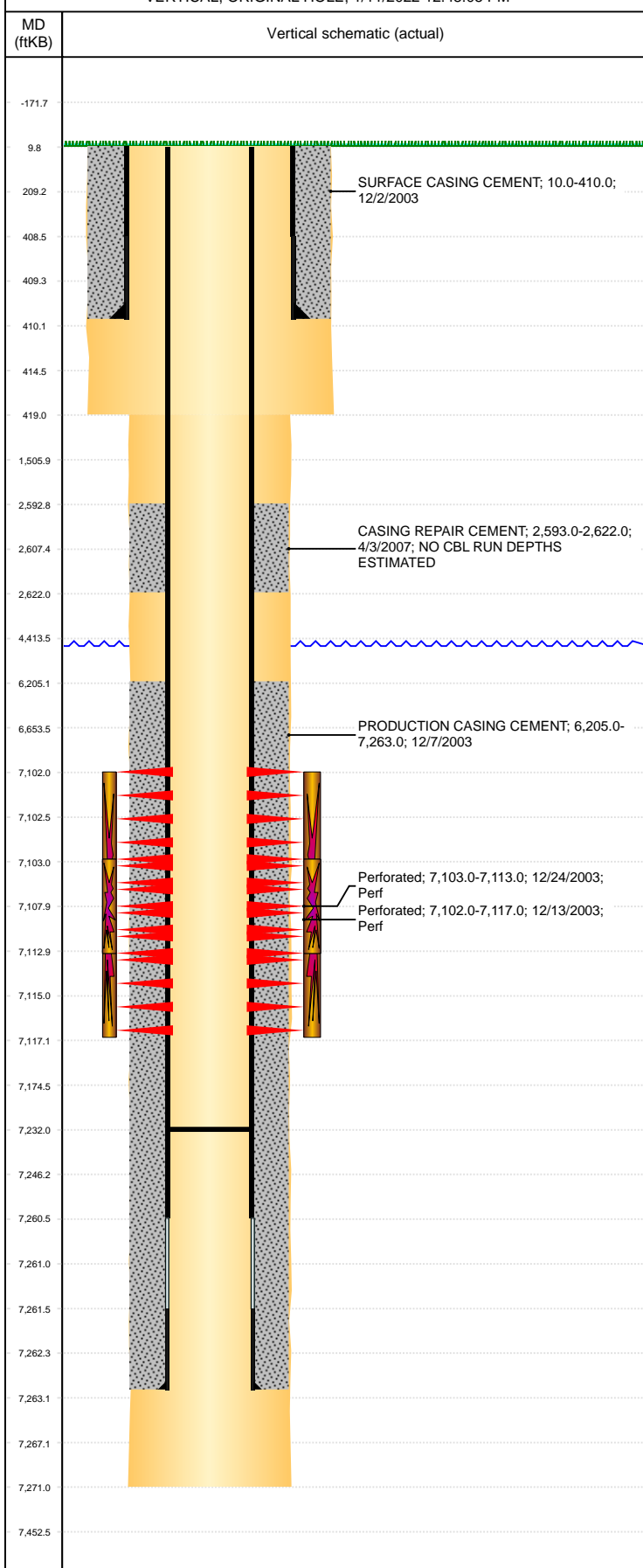


Well Name: BERG FARMS 19-21

VERTICAL, ORIGINAL HOLE, 1/11/2022 12:48:05 PM



Well Header									
API 05-123-21577			Business Unit DJ BASIN			District 15		Well Config VERTICAL	
KB - GL / MSL (ft... 10.00		Spud Date 12/1/2003		P & A Date		Well Production Status PR		SoRT No	
Comment POSSIBLE HOLE IN CSG FROM 2593 - 2622', FIX W/ CEMENT.									
NO TBG REPORT AFTER REFRAC									
Surface Location (Congressional)									
Qtr 3 NE	Qtr 4 NW	Section 19	Twnshp 6	Twnsh... N	Range 65	Rng E... W	Actual Latitude (°) 40.47910000	Actual Longitude (°) -104.70819000	
Wellbore Sections									
Section Des			Size (in)			Act Top, MD (ftKB)		Act Btm, MD (ftKB)	
SURFACE			12 1/4			10		419	
PRODUCTION			7 7/8			419		7,271	
Casing Strings									
Csg Des			Run Date		OD (in)	Wt/Len (lb/ft)	Grade	Top, MD (ftKB)	MD (ftKB)
Surface			12/2/2003		8 5/8	24.00	J-55	10.0	410.0
Production			12/7/2003		4 1/2	11.60	?	10.0	7,263.0
Cement									
Des					Start Date		Top (ftKB)		Btm (ftKB)
SURFACE CASING CEMENT					12/2/2003		10.0		410.0
PRODUCTION CASING CEMENT					12/7/2003		6,205.0		7,263.0
CASING REPAIR CEMENT					4/3/2007		2,593.0		2,622.0
Zone Statuses									
Zone Name		Status Date	Status	Fluid Type	Job			Prod Method	
CODELL		1/13/2004	PR		DRILLING/COMPLETION - ORIGINAL, 12/1/2003...				
CODELL		4/12/2007	PR		RE-FRAC, 3/22/2007 00:00				
Perforation Data									
Linked Zone			Bnch/Stg	Entered Shot Total	Top (ftKB)		Btm (ftKB)		Date
CODELL, ORIGINAL HOLE				60	7,102.00		7,117.00		12/13/2003
CODELL, ORIGINAL HOLE				40	7,103.00		7,113.00		12/24/2003
Stimulation Intervals									
Zone				Start Date		Top (ftKB)		Btm (ftKB)	
CODELL, ORIGINAL HOLE				12/19/2003		7,102.0		7,117.0	
CODELL, ORIGINAL HOLE				3/26/2007		7,103.0		7,113.0	
CODELL, ORIGINAL HOLE				1/9/2004		7,103.0		7,113.0	
Other In Hole									
Run Date		Des			Make		OD (in)	Top (ftKB)	Btm (ftKB)
Logs									
Date		Type				Top, MD (ftKB)		Btm, MD (ftKB)	
12/6/2003		COMPENSATED DENSITY				410.0		7,249.0	
12/6/2003		INDUCTION				410.0		7,269.0	
12/12/2003		CEMENT BOND				6,100.0		7,230.0	
Plug Back Total Depths									
Date		Type		Com				Depth (ftKB)	
12/7/2003		FLOAT COLLAR		FLOAT COLLAR				7,247.0	
12/12/2003		FILL		DEPTH LOGGER ON CBL				7,232.0	