



Panther Drilling Systems

Park 4-63-4-0108B

Scale 5":100' - MD

2/5/2019 5:00 PM

Oper. Company: Hightpoint Resources

Well: Park 4-63-4-0108B

Field: WattenBerg

Rig: Savanna 803

Well ID: 051234907000

Job Number: 764H-2018

State: CO

County: Weld

Country: USA

Latitude: 40 20' 35.960"

Longitude: 104 26' 3.080"

Start Date: 02/02/2019

Last Svy MD: 6443.00

Last Calc. Date: 2/5/2019

Tool Run Data	Run #1	Run #2	Run #3	Run #4	Run #5
Tool S/N	300	300	300		
Bit Size	8.5	8.5	8.5		
Cal Factor	3.943	3.943	3.943		
Survey Offset	64.00	64.00	67.00		
Gamma Offset	53.00	53.00	56.00		
Resistivity Offset	0.00	0.00	0.00		
Start Depth	843.00	6039.00	6315.00		
StartDate	2/2/2019	2/4/2019	2/5/2019		
StartTime	21:30	17:30	10:00		
EndDepth	6039.00	6315.00	0.00		
EndDate	2/4/2019	2/5/2019			
EndTime	15:00	03:00			
Mud Type	WBM	WBM			
Mud Weight	9.4	9.4			
Funnel Viscosity	40	40			
Plastic Viscosity	14	14			
Yield Point	12	12			
Gel Strength	4/6/14	4/6/14			
Solids Content	.07	.07			
Chlorides	400	400			
Temperature	120.0	124.3			
Non-Mag Above	35.60	35.60			

Hole Data			Casing Data		
Size	From	To	Size	From	To
8.5	843.00	0.00			

All interpretations are opinions based on inferences from electrical or other measurements and we cannot and do not guarantee the accuracy or correctness of any interpretation, and we shall not except in the case of gross or willful negligence on our part, be liable or responsible for any loss, cost damages or expenses incurred or sustained by anyone resulting from an interpretation made by any of our officers, agents, or employees.

0.00 GR(API) 300.00 MD 0.00 ROP(FT/HR) 1,000.00 Surveys (MD/INC/AZ/TVD/VS)

FT

		0			MD: 0.00 INC: 0.00 AZ: 0.00 TVD: 0.0000
		10			MD: 15.00 INC: 0.00 AZ: 0.00 TVD: 115.000
		20			
		30			
		40			

[illegible]

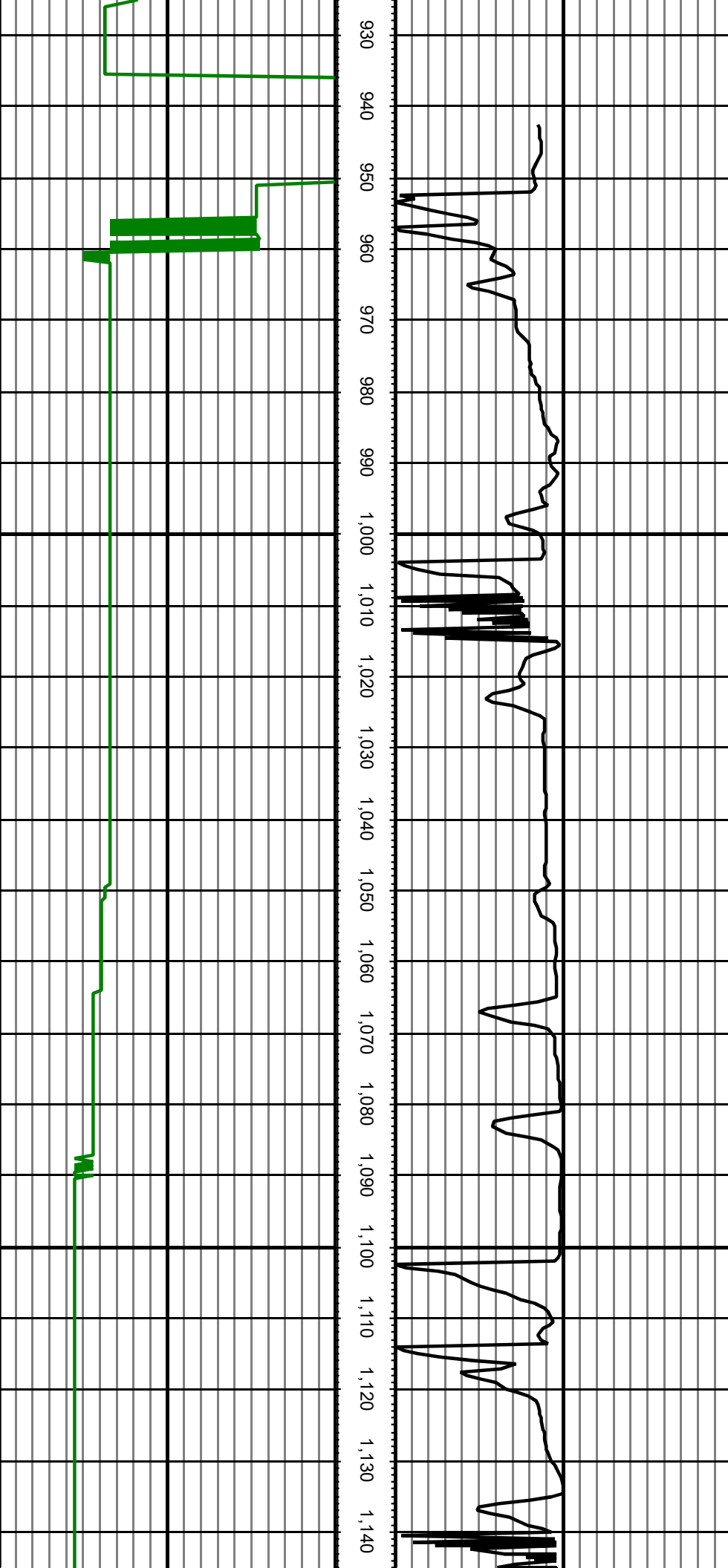
[illegible]

MD: 488.00 INC: 1.19 AZ: 1.63 TV: 488.00

MD: 583.00 INC: 1.89 AZ: 350.74 TV: 583.00

MD: 678.00 INC: 1.93 AZ: 355.92 TV: 678.00

[illegible]



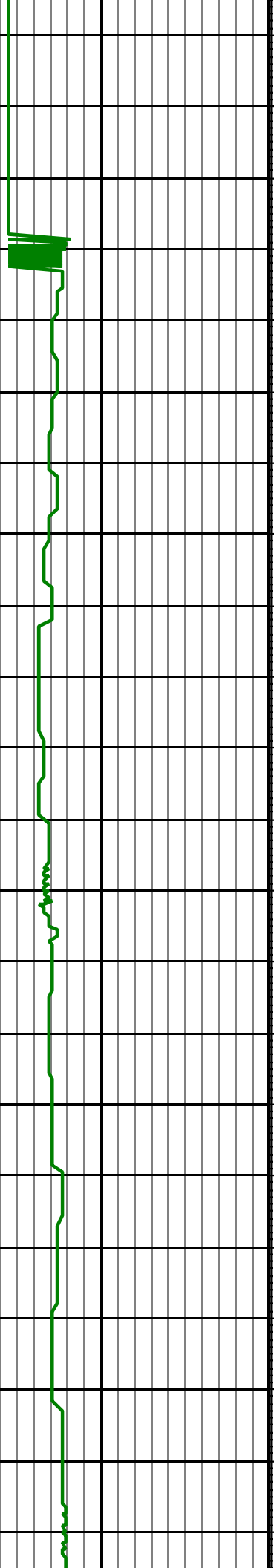
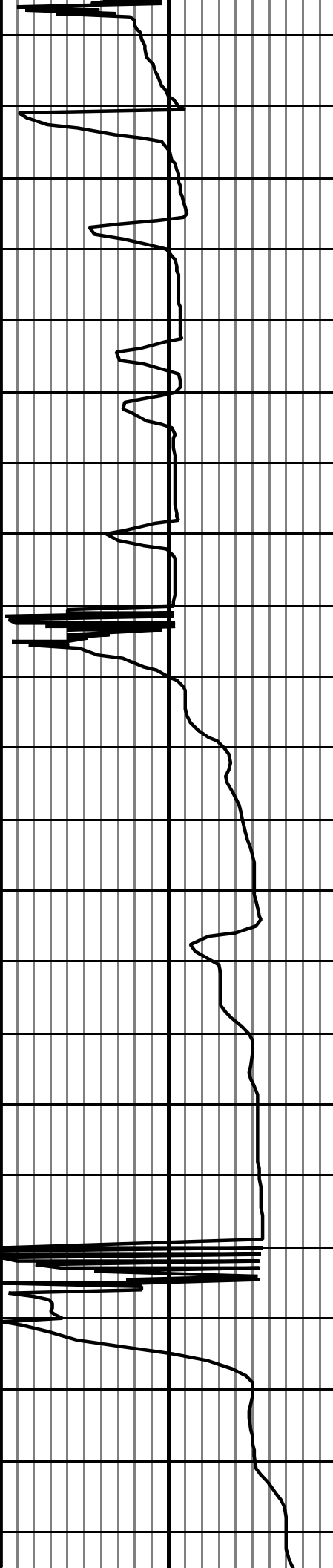
MD: 1051.00 INC: 4.50 AZ: 359.1005100

MD: 1146.00 INC: 4.30 AZ: 0.301146004

MD: 1241.00 INC: 4.30 AZ: 357.90247100

MD: 1335.00 INC: 3.10 AZ: 356.90387100

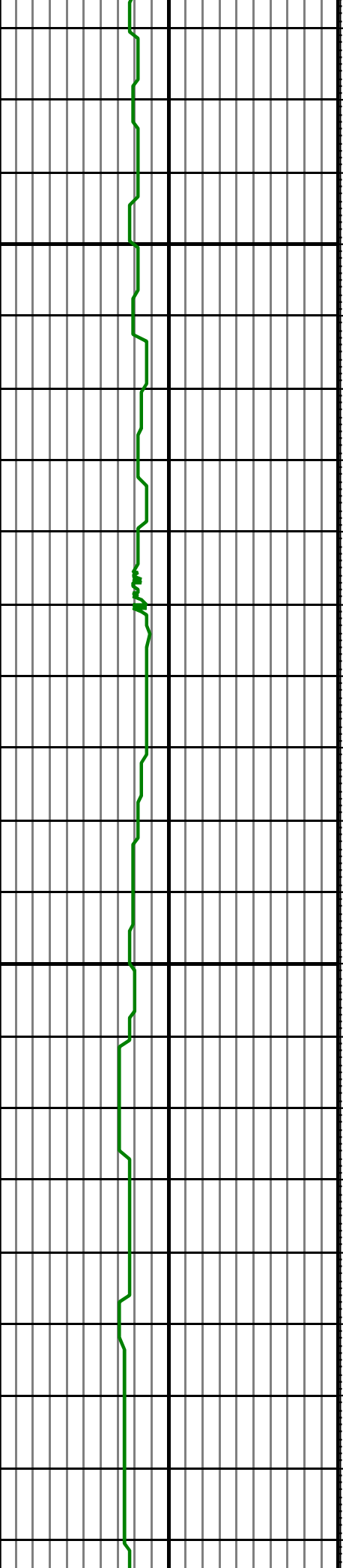
1,150 1,160 1,170 1,180 1,190 1,200 1,210 1,220 1,230 1,240 1,250 1,260 1,270 1,280 1,290 1,300 1,310 1,320 1,330 1,340 1,350 1,360



MD: 1429.00 INC: 2.60 AZ: 0.50 T: 1429.00

MD: 1524.00 INC: 4.20 AZ: 6.60 T: 1524.00

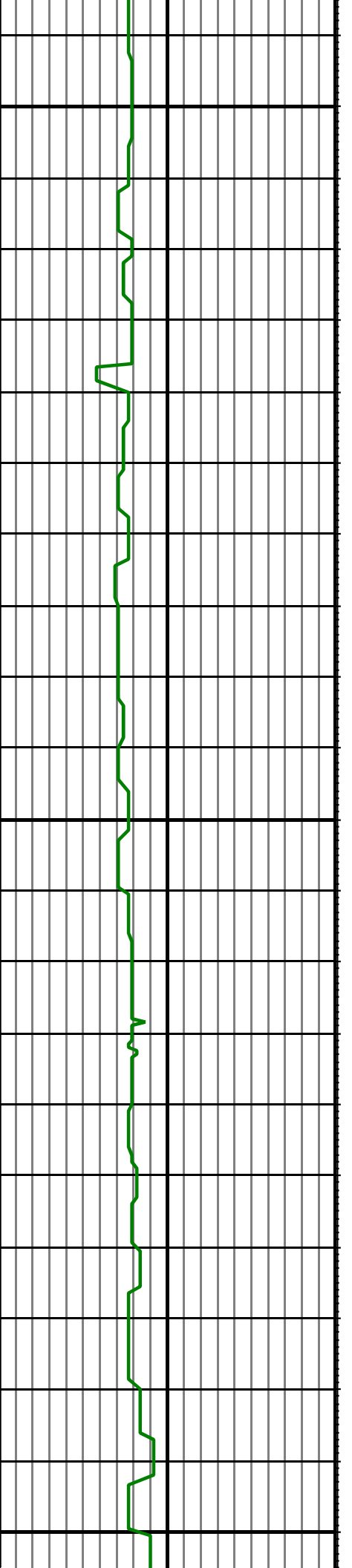
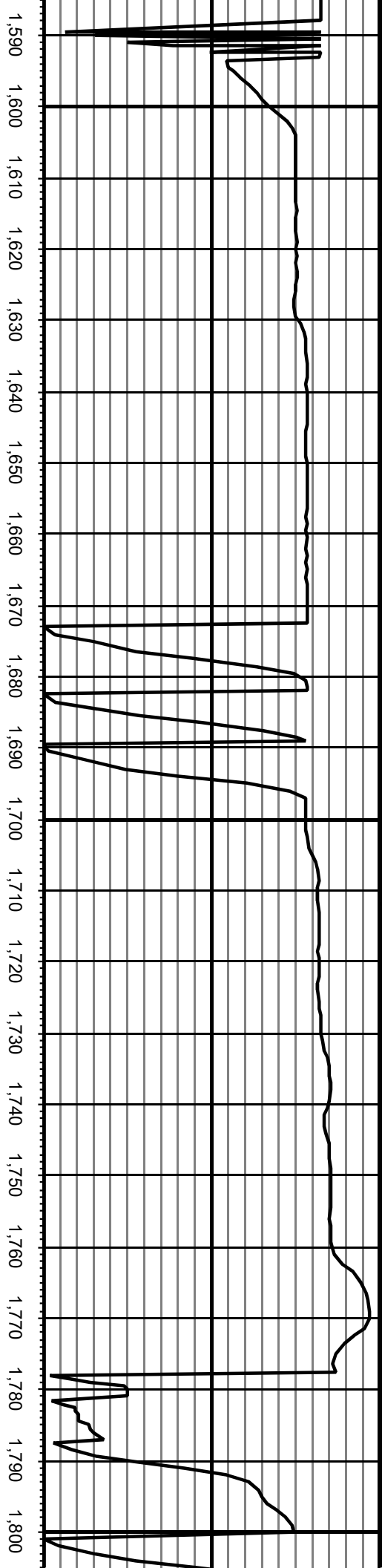
1,370 1,380 1,390 1,400 1,410 1,420 1,430 1,440 1,450 1,460 1,470 1,480 1,490 1,500 1,510 1,520 1,530 1,540 1,550 1,560 1,570 1,580



MD: 1618.00 INC: 4.30 AZ: 6.30 11.612.000

MD: 1712.00 INC: 4.10 AZ: 4.00 11.712.000

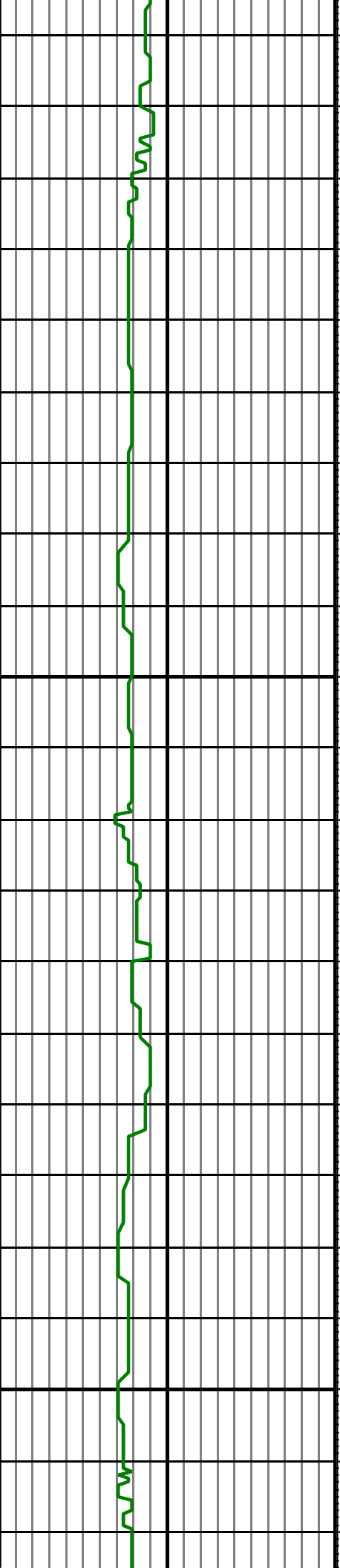
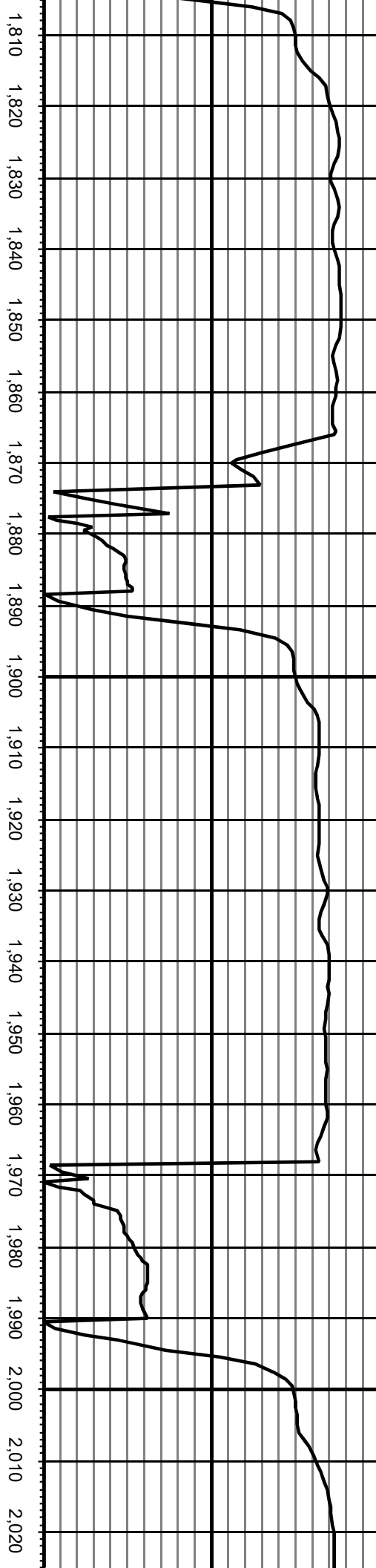
MD: 1807.00 INC: 5.50 AZ: 7.00 11.807.000



MD: 1807.00 INC: 5.50 AZ: 7.90 11.80 1.000

MD: 1901.00 INC: 7.20 AZ: 13.70 11.80 1.000

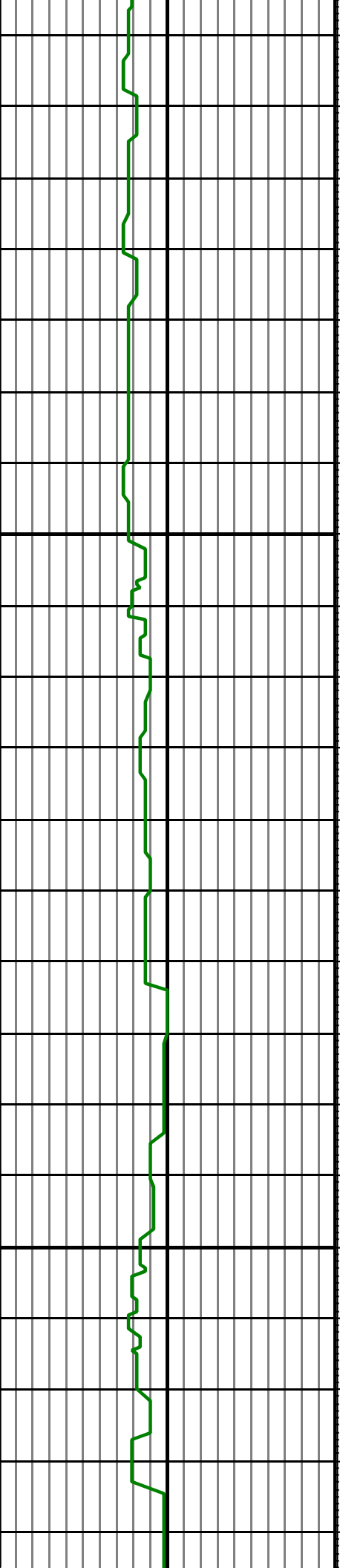
MD: 1996.00 INC: 10.40 AZ: 13.80 11.80 1.000



MD: 2091.00 INC: 13.40 AZ: 9.40 09D000

MD: 2185.00 INC: 14.90 AZ: 6.10 18D000

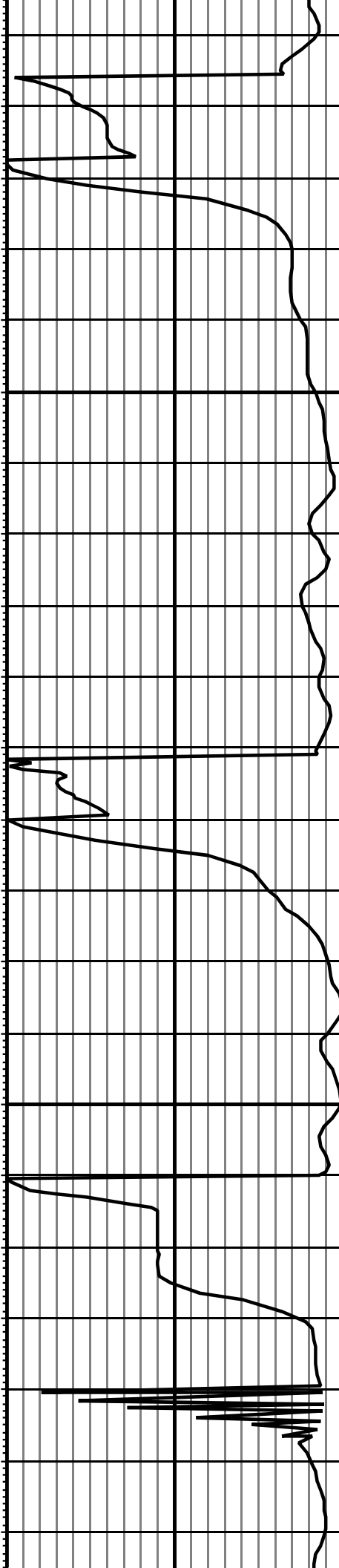
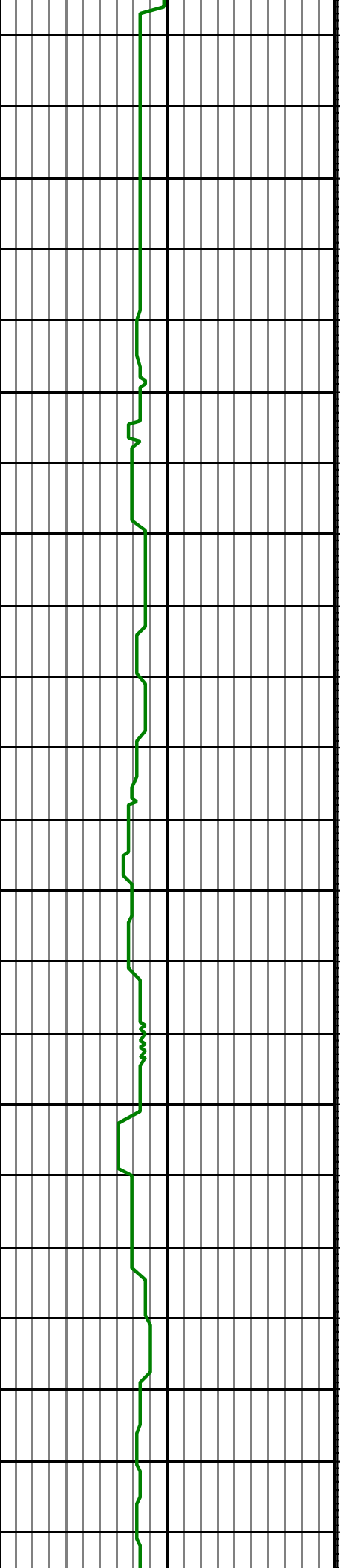
2.030 2.040 2.050 2.060 2.070 2.080 2.090 2.100 2.110 2.120 2.130 2.140 2.150 2.160 2.170 2.180 2.190 2.200 2.210 2.220 2.230 2.240



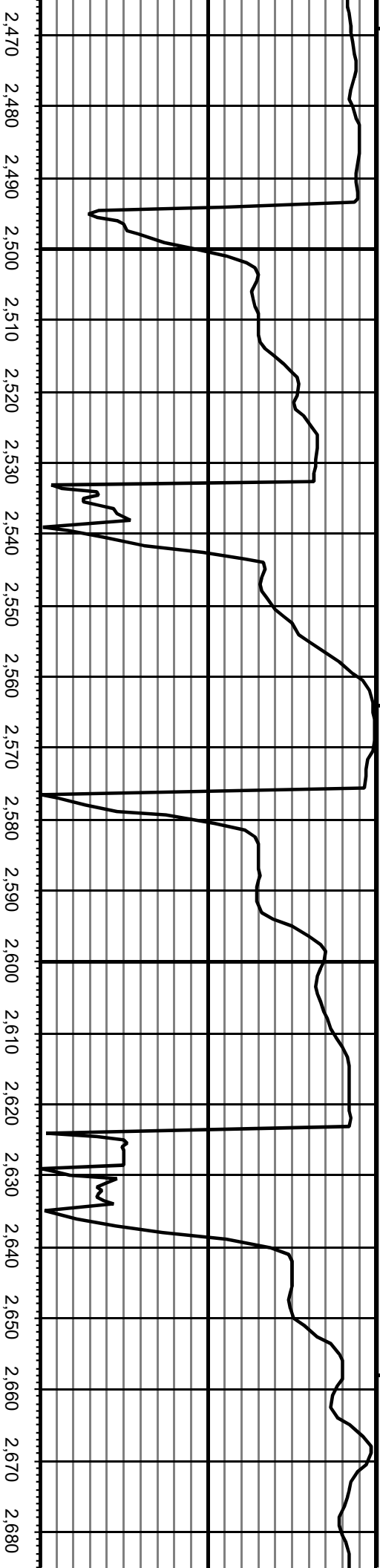
MD: 2280.00 INC: 16.60 AZ: 4.70, 280.00

MD: 2374.00 INC: 17.80 AZ: 2.60, 374.00

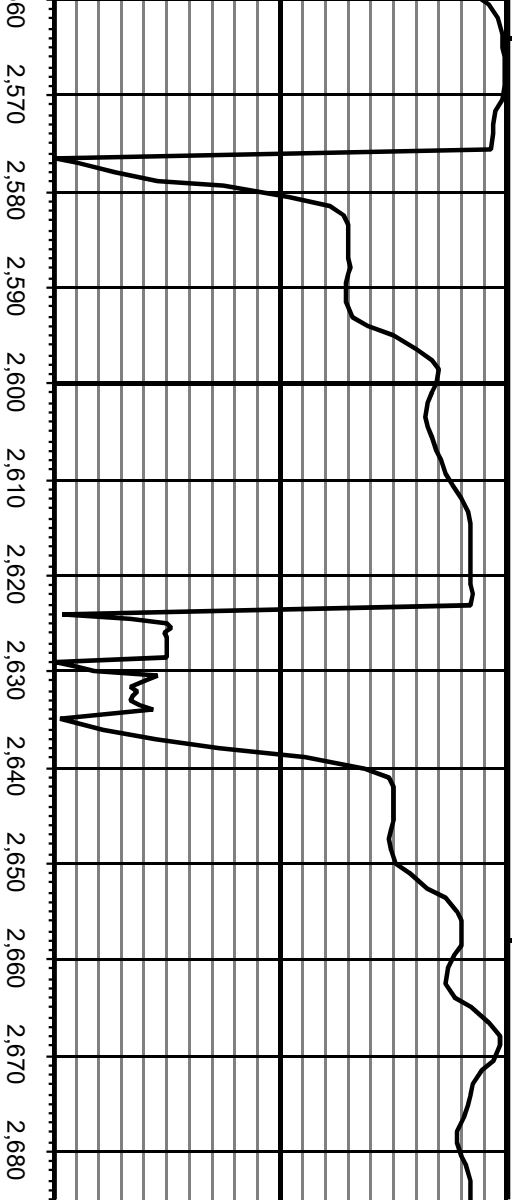
2.250 2.260 2.270 2.280 2.290 2.300 2.310 2.320 2.330 2.340 2.350 2.360 2.370 2.380 2.390 2.400 2.410 2.420 2.430 2.440 2.450 2.460



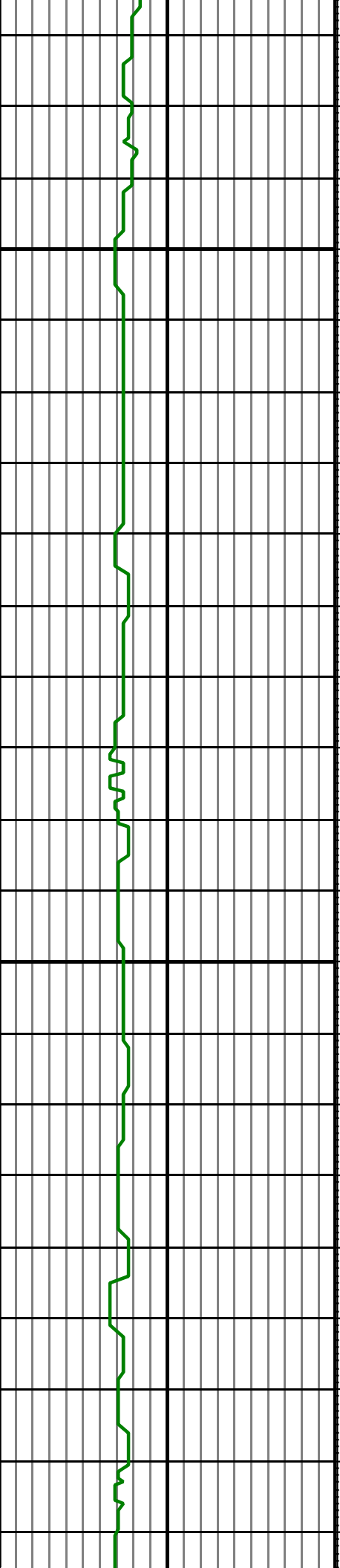
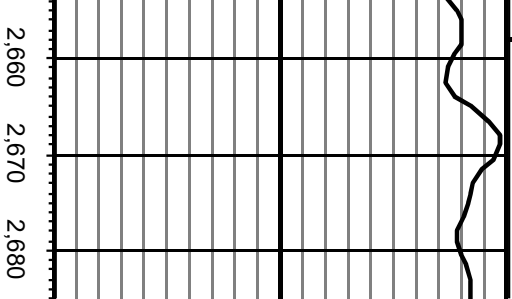
MD: 2469.00 INC: 17.20 AZ: 3592.461100



MD: 2564.00 INC: 17.80 AZ: 3592.564100

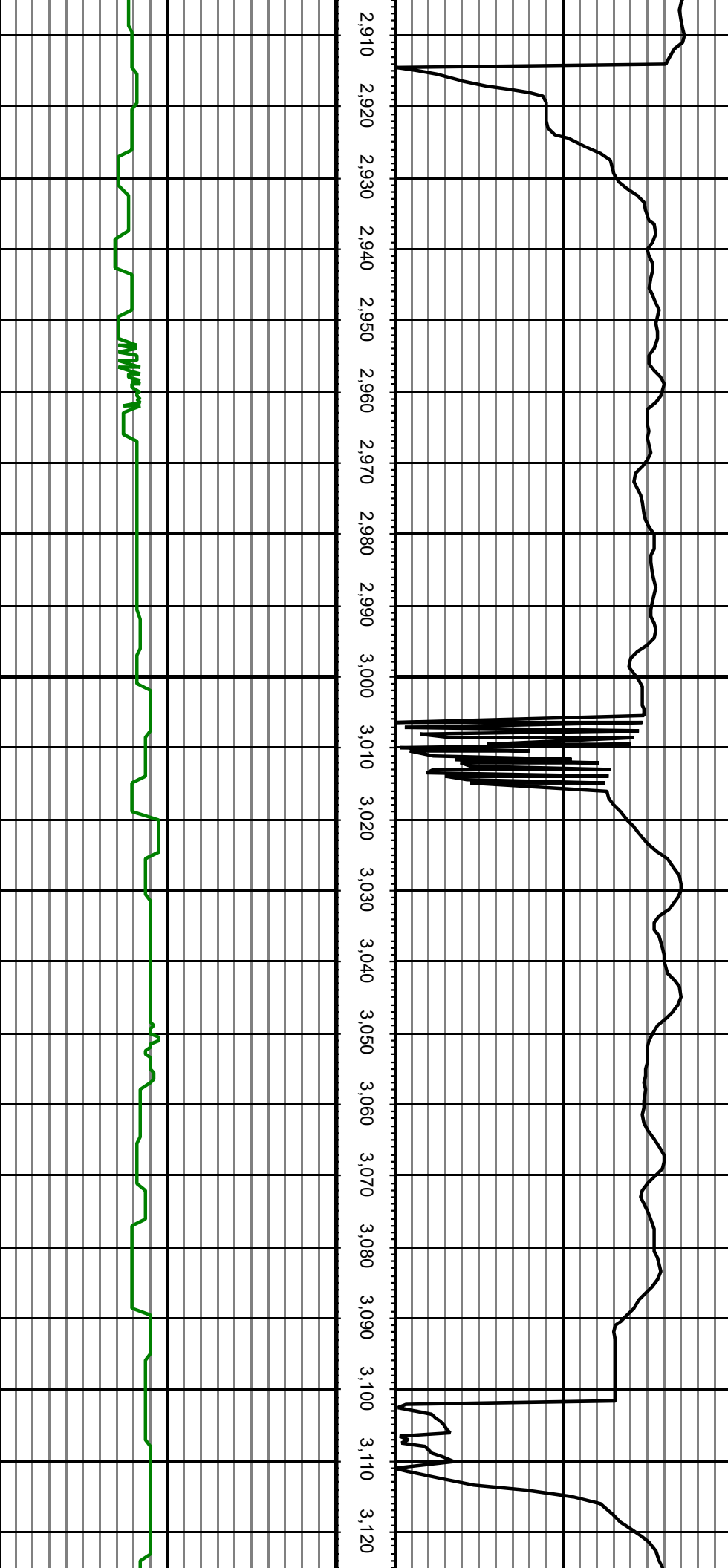


MD: 2658.00 INC: 18.00 AZ: 2.92.658100



MD: 2753.00 INC: 17.30 AZ: 4.00, 2753.00

MD: 2847.00 INC: 17.50 AZ: 9.00, 2847.00



2.910 2.920 2.930 2.940 2.950 2.960 2.970 2.980 2.990 3.000 3.010 3.020 3.030 3.040 3.050 3.060 3.070 3.080 3.090 3.100 3.110 3.120

MD: 2942.00 INC: 17.00 AZ: 7.40 0.0000

MD: 3037.00 INC: 16.80 AZ: 6.20 0.0000

MD: 3131.00 INC: 17.00 AZ: 8.50, TVD001

3.130 3.140 3.150 3.160 3.170 3.180 3.190 3.200 3.210 3.220 3.230 3.240 3.250 3.260 3.270 3.280 3.290 3.300 3.310 3.320 3.330 3.340

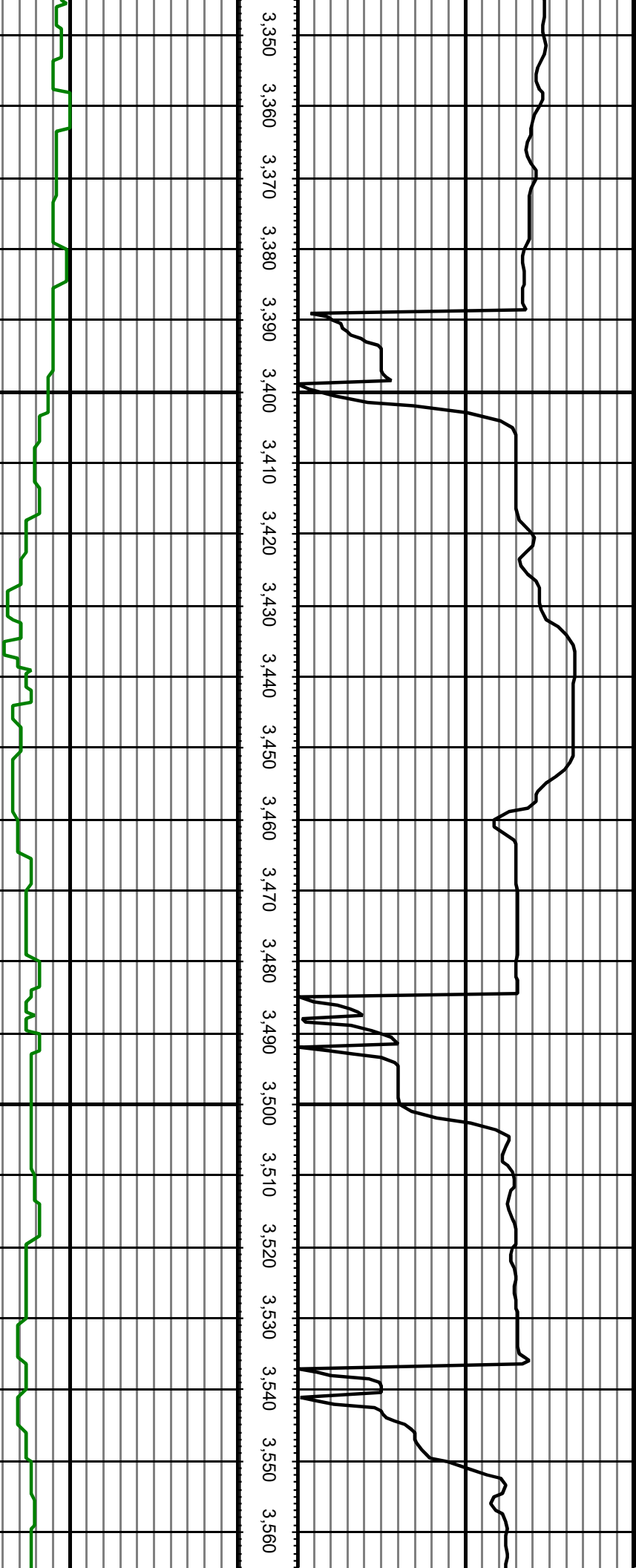
MD: 3227.00 INC: 18.10 AZ: 6.50, TVD002

MD: 3321.00 INC: 16.90 AZ: 5.10, TVD003

MD: 3417.00 INC: 18.70 AZ: 5.70, #VD003

MD: 3511.00 INC: 19.90 AZ: 8.10, #VD004

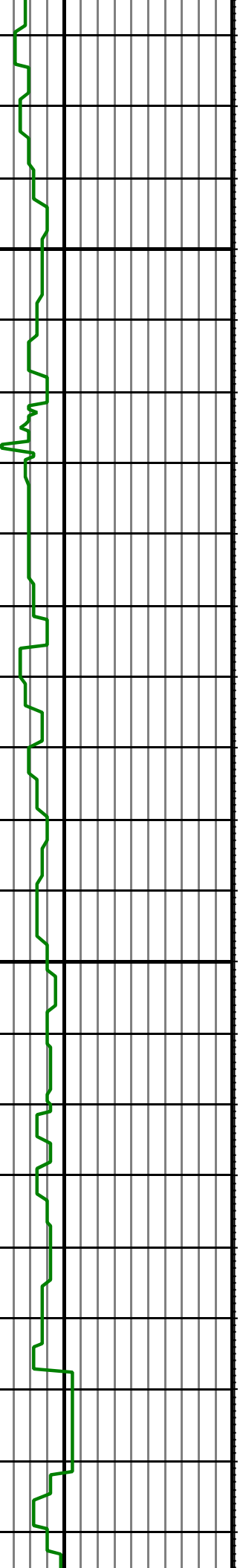
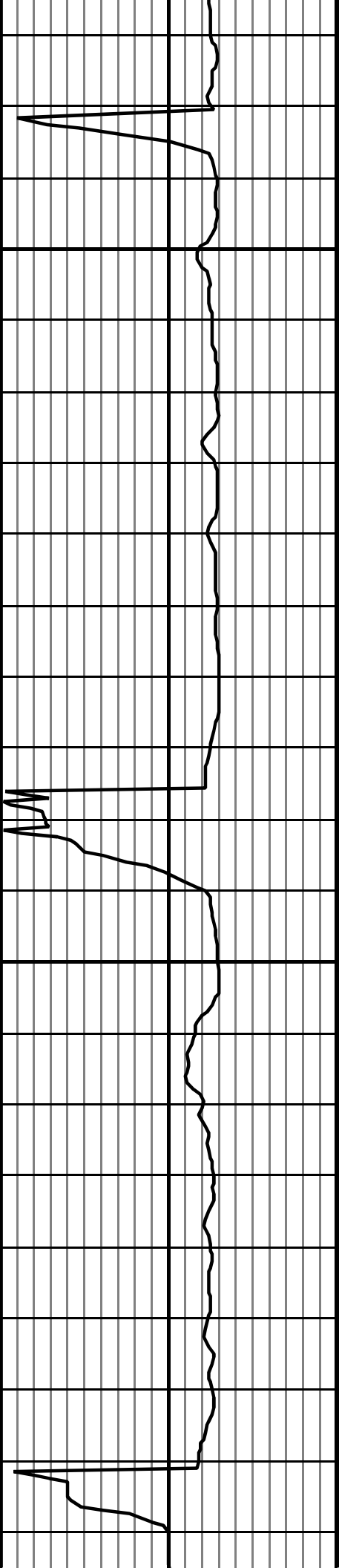
3.350 3.360 3.370 3.380 3.390 3.400 3.410 3.420 3.430 3.440 3.450 3.460 3.470 3.480 3.490 3.500 3.510 3.520 3.530 3.540 3.550 3.560



MD: 3606.00 INC: 20.10 AZ: 6.70 3.606000

MD: 3701.00 INC: 19.30 AZ: 6.03 3.701000

3.570 3.580 3.590 3.600 3.610 3.620 3.630 3.640 3.650 3.660 3.670 3.680 3.690 3.700 3.710 3.720 3.730 3.740 3.750 3.760 3.770 3.780

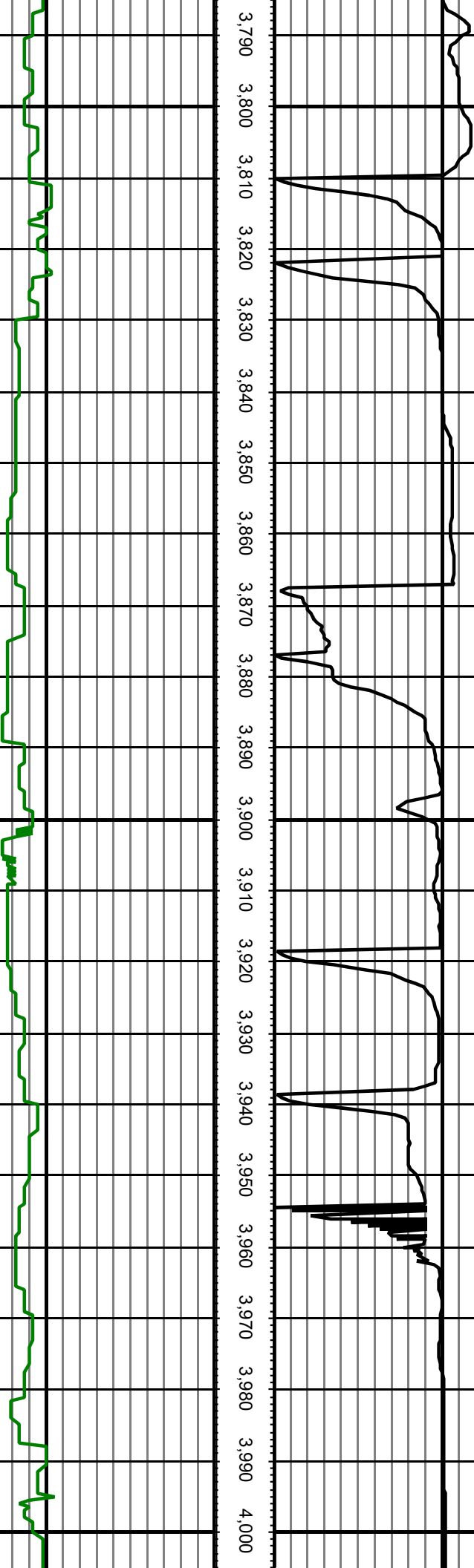


MD: 3796.00 INC: 18.00 AZ: 4.83,796.007

MD: 3890.00 INC: 17.10 AZ: 8.53,890.007

MD: 3984.00 INC: 16.40 AZ: 7.13,984.008

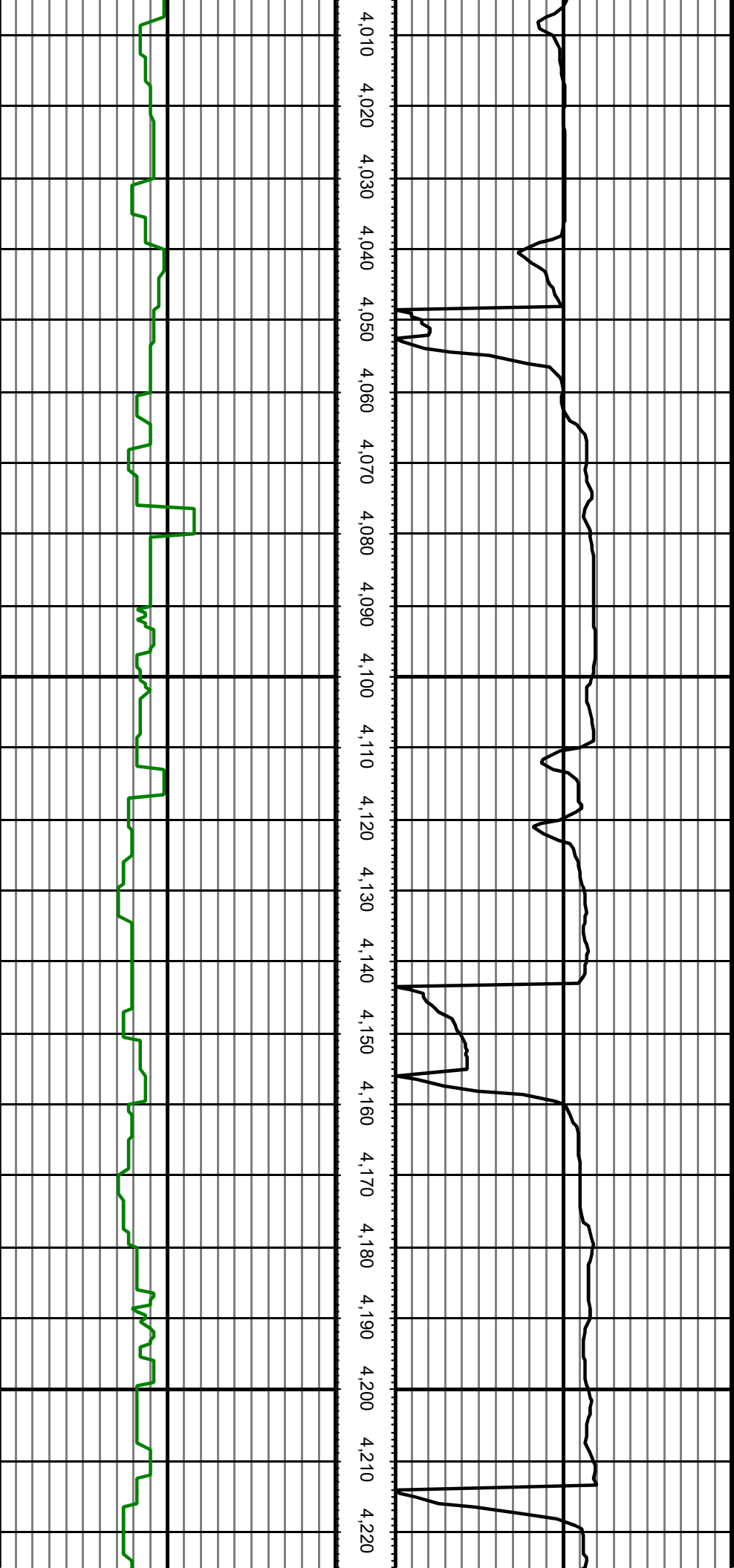
3.790 3.800 3.810 3.820 3.830 3.840 3.850 3.860 3.870 3.880 3.890 3.900 3.910 3.920 3.930 3.940 3.950 3.960 3.970 3.980 3.990 4.000



MD: 4078.00 INC: 15.70 AZ: 8.44 078.009

MD: 4173.00 INC: 17.20 AZ: 11.40 173.004

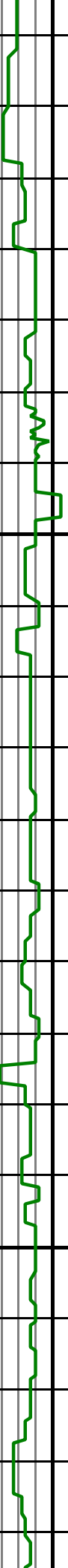
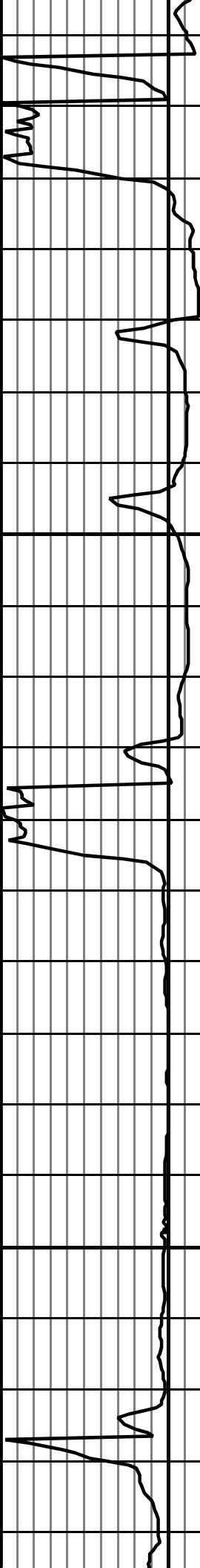
4.010 4.020 4.030 4.040 4.050 4.060 4.070 4.080 4.090 4.100 4.110 4.120 4.130 4.140 4.150 4.160 4.170 4.180 4.190 4.200 4.210 4.220



MD: 4268.00 INC: 17.50 AZ: 10.00 4268.00

MD: 4363.00 INC: 18.00 AZ: 8.70 4363.00

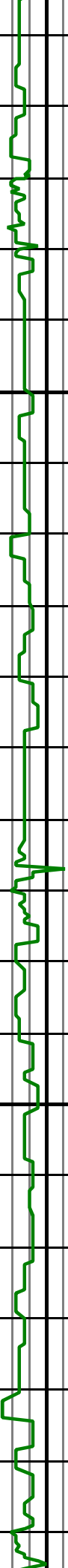
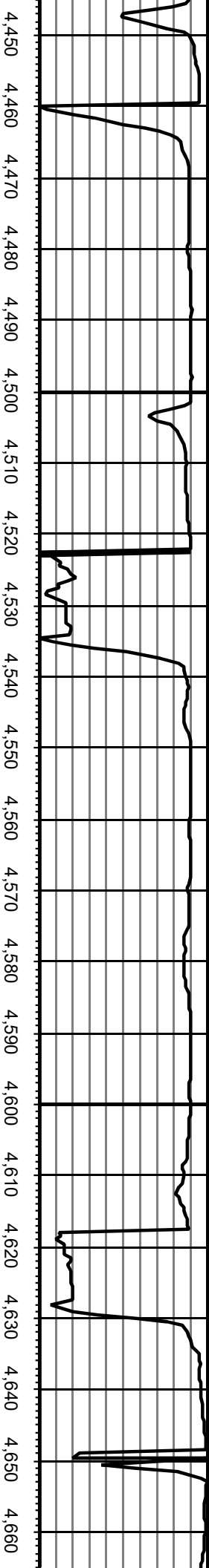
4.230 4.240 4.250 4.260 4.270 4.280 4.290 4.300 4.310 4.320 4.330 4.340 4.350 4.360 4.370 4.380 4.390 4.400 4.410 4.420 4.430 4.440



MD: 4458.00 INC: 16.30 AZ: 7.34 453.00

MD: 4553.00 INC: 17.10 AZ: 9.24 553.00

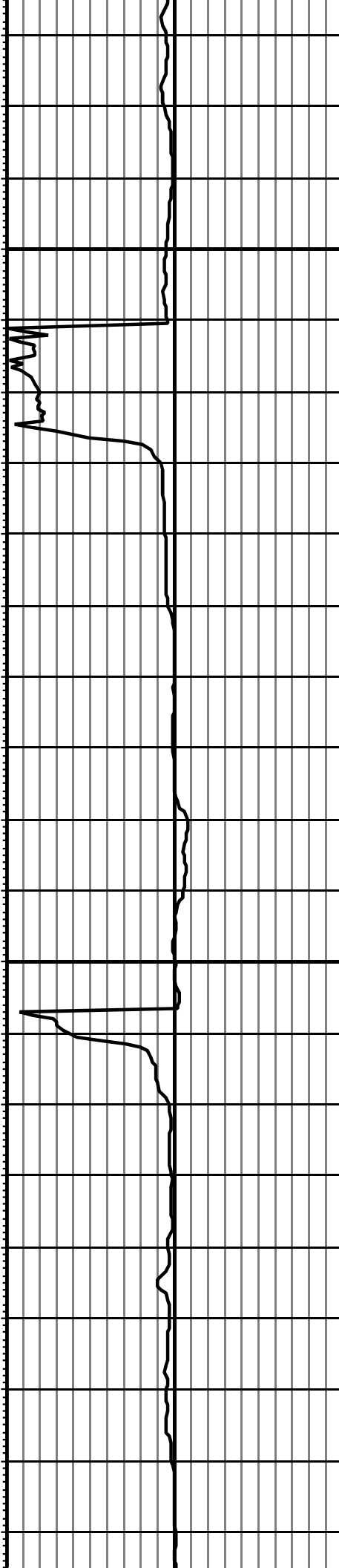
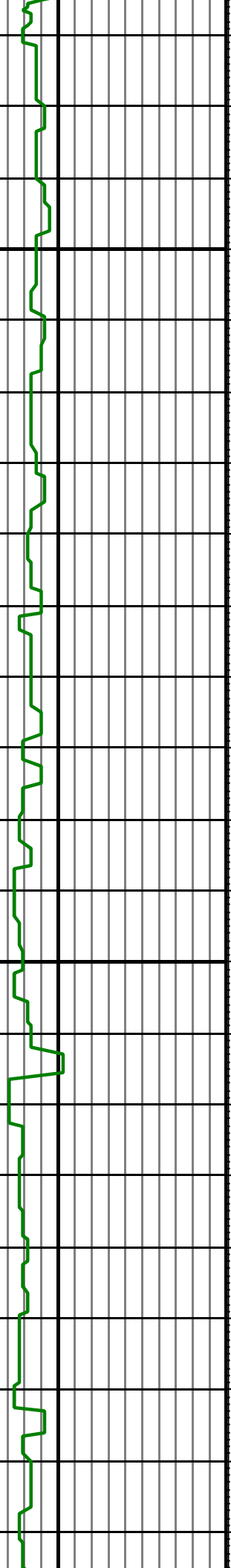
MD: 4647.00 INC: 17.50 AZ: 10.46 647.00



MD: 4742.00 INC: 18.20 AZ: 8.04 742000

MD: 4837.00 INC: 17.80 AZ: 7.24 837000

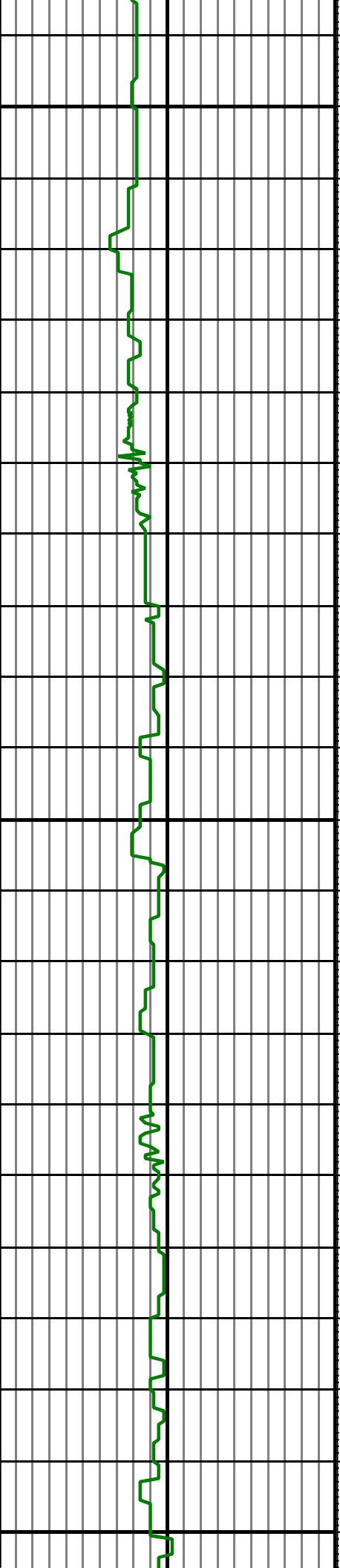
4.670 4.680 4.690 4.700 4.710 4.720 4.730 4.740 4.750 4.760 4.770 4.780 4.790 4.800 4.810 4.820 4.830 4.840 4.850 4.860 4.870 4.880



MD: 4931.00 INC: 16.80 AZ: 5.94 0.0000

MD: 5025.00 INC: 17.10 AZ: 6.46 0.0000

4.890 4.900 4.910 4.920 4.930 4.940 4.950 4.960 4.970 4.980 4.990 5.000 5.010 5.020 5.030 5.040 5.050 5.060 5.070 5.080 5.090 5.100

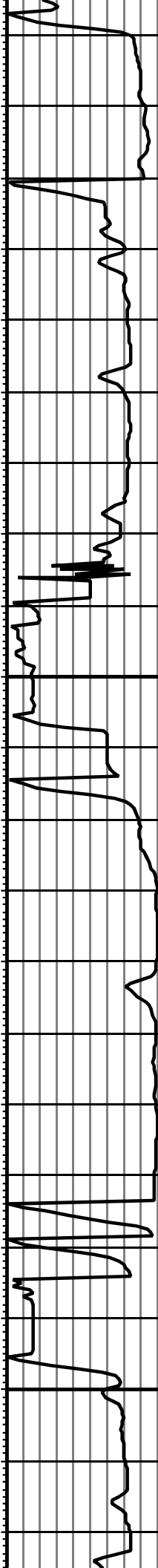
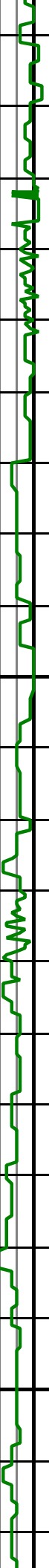


MD: 5120.00 INC: 17.50 AZ: 4.86, 17.00

MD: 5214.00 INC: 17.80 AZ: 5.26, 17.00

MD: 5309.00 INC: 18.40 AZ: 4.36, 17.00

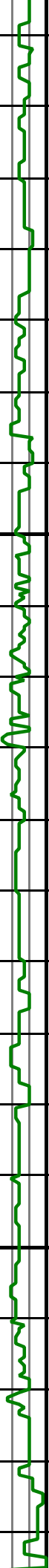
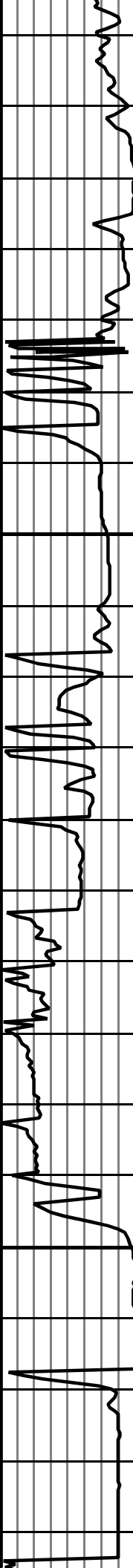
5.110 5.120 5.130 5.140 5.150 5.160 5.170 5.180 5.190 5.200 5.210 5.220 5.230 5.240 5.250 5.260 5.270 5.280 5.290 5.300 5.310 5.320



MD: 5404.00 INC: 16.50 AZ: 3.36, 4.00 062

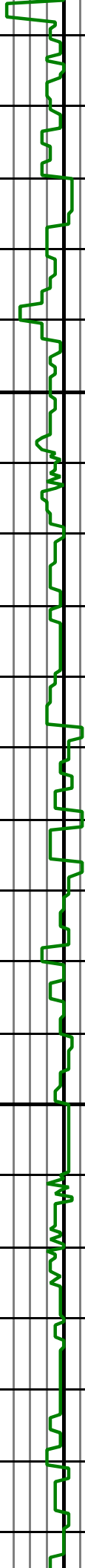
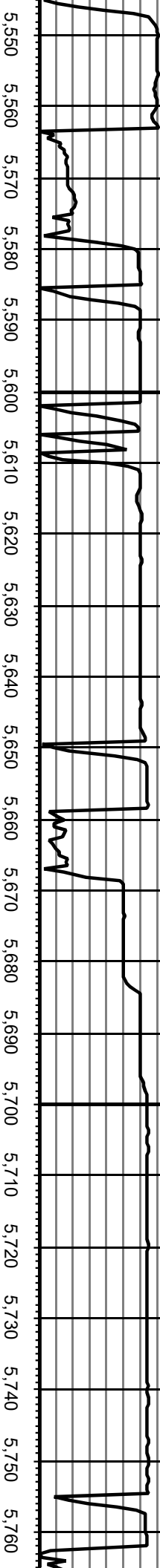
MD: 5498.00 INC: 17.00 AZ: 8.76, 9.00 063

5.330 5.340 5.350 5.360 5.370 5.380 5.390 5.400 5.410 5.420 5.430 5.440 5.450 5.460 5.470 5.480 5.490 5.500 5.510 5.520 5.530 5.540



MD: 5593.00 INC: 18.00 AZ: 5.85, 593.00

MD: 5687.00 INC: 17.60 AZ: 5.85, 587.00



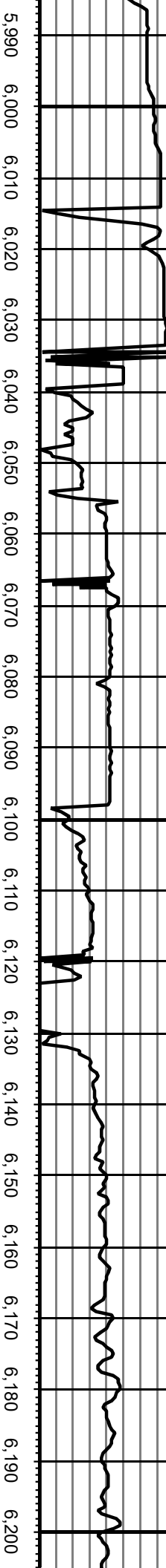
MD: 5781.00 INC: 18.10 AZ: 4.75, 781.00

MD: 5876.00 INC: 17.60 AZ: 5.15, 876.00

MD: 5970.00 INC: 16.60 AZ: 10.50, 970.00

MD: 6065.00 INC: 15.00 AZ: 10.606500

MD: 6159.00 INC: 16.40 AZ: 26.615900



MD: 6253.00 INC: 19.00 AZ: 44.802531D06

MD: 6303.00 INC: 18.90 AZ: 49.503031D06

MD: 6348.00 INC: 21.10 AZ: 57.003481D06

MD: 6396.00 INC: 25.10 AZ: 67.403961D06

6.210 6.220 6.230 6.240 6.250 6.260 6.270 6.280 6.290 6.300 6.310 6.320 6.330 6.340 6.350 6.360 6.370 6.380 6.390 6.400 6.410 6.420

