

Foundation Energy Management LLC, SOC State 145 24-16  
125-08617  
Inspection #688312159  
2/16/2022  
Routine Field Inspection



Colorado Oil and Gas Conservation Commission

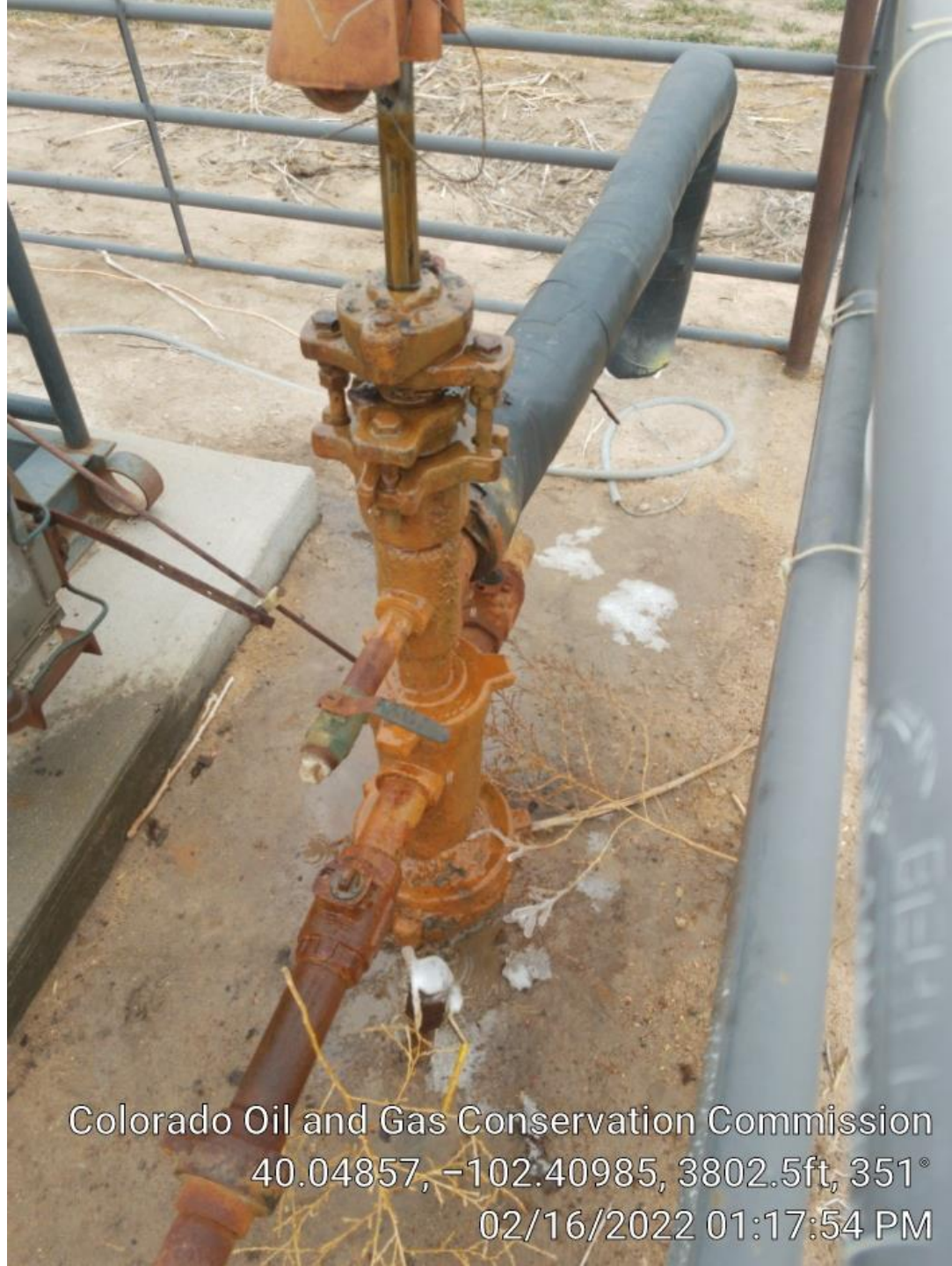
39.99875, -102.33445, 322°

02/16/2022 01:15:59 PM





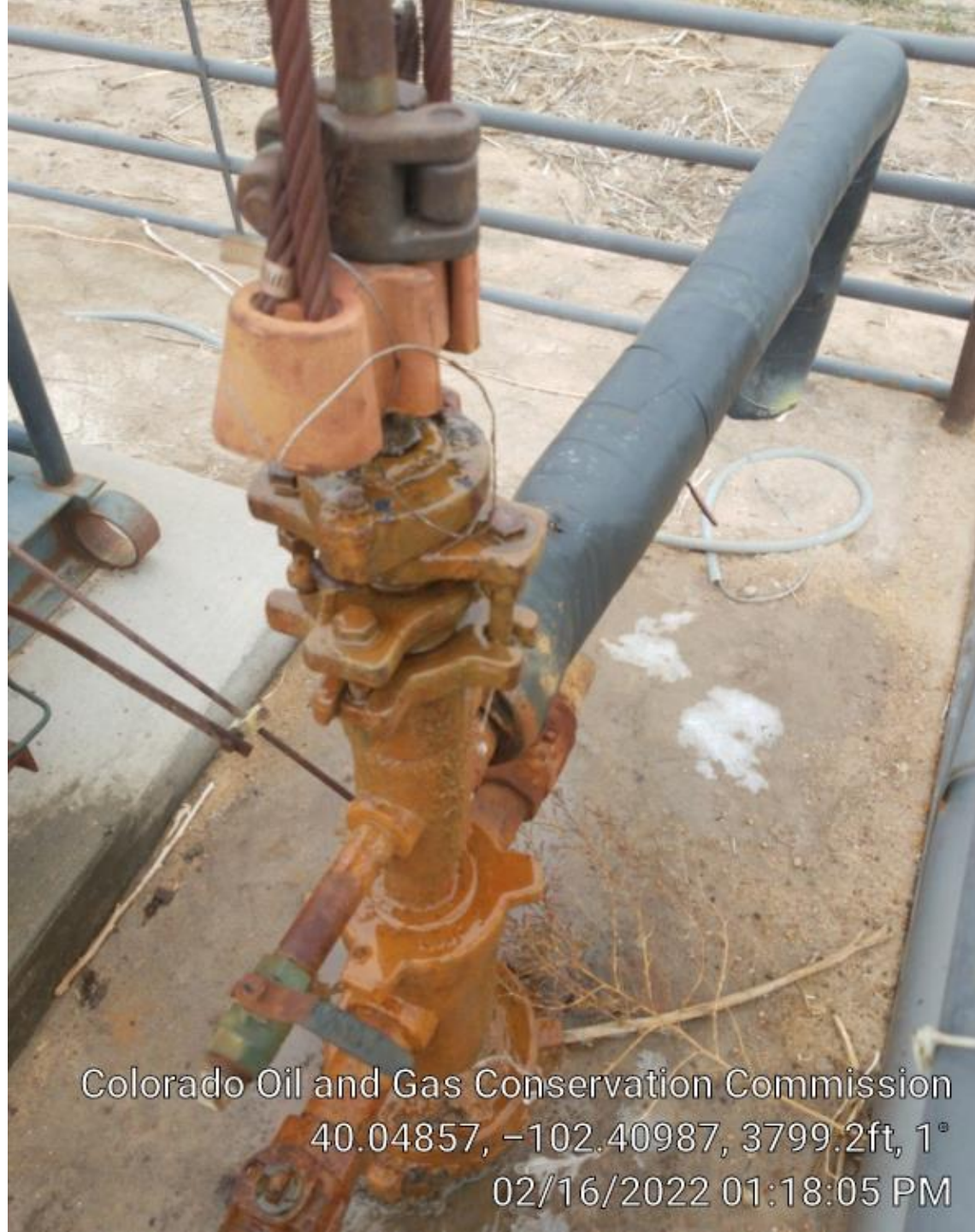
Colorado Oil and Gas Conservation Commission  
40.04854, -102.40983, 3799.2ft, 275°  
02/16/2022 01:17:43 PM



Stuffing box leak.

Colorado Oil and Gas Conservation Commission  
40.04857, -102.40985, 3802.5ft, 351°  
02/16/2022 01:17:54 PM





Colorado Oil and Gas Conservation Commission  
40.04857, -102.40987, 3799.2ft, 1°  
02/16/2022 01:18:05 PM



Colorado Oil and Gas Conservation Commission  
40.04855, -102.40992, 3792.7ft, 22°  
02/16/2022 01:18:20 PM





Colorado Oil and Gas Conservation Commission  
40.04855, -102.40992, 3792.7ft, 197°  
02/16/2022 01:19:22 PM





Colorado Oil and Gas Conservation Commission  
40.04854, -102.40986, 3805.8ft, 315°  
02/16/2022 01:18:13 PM



