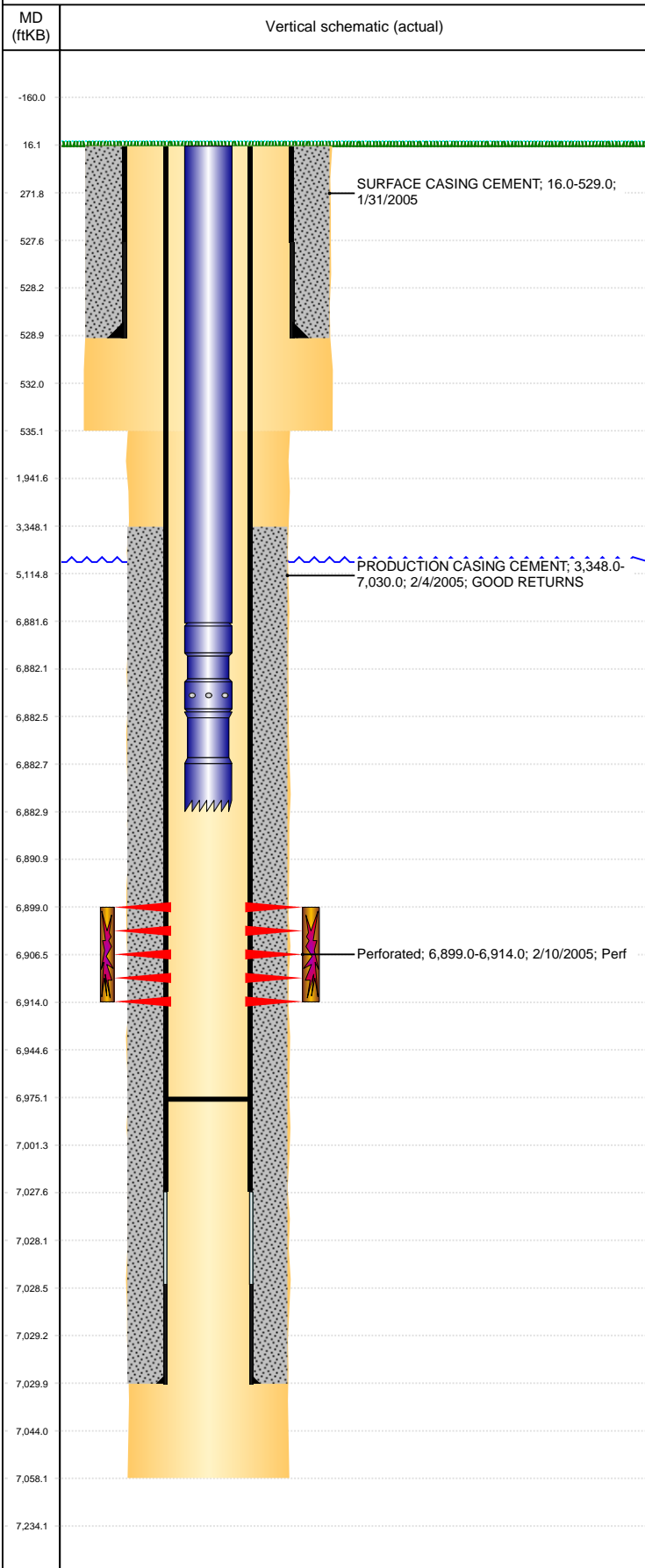


**Well Name: REBA A31-03**

VERTICAL, ORIGINAL HOLE, 2/16/2022 4:53:40 PM



Well Header									
API 05-123-21881		Business Unit DJ BASIN		District 15		Well Config VERTICAL			
KB - GL / MSL (ft... 16.00		Spud Date 1/31/2005		P & A Date		Well Production Status PR		SoRT No	
Comment									
Surface Location (Congressional)									
Qtr 3 NE	Qtr 4 NW	Section 31	Twonshp 6	Twonsh... N	Range 64	Rng E... W	Actual Latitude (°) 40.44783431	Actual Longitude (°) -104.59550729	
Wellbore Sections									
Section Des		Size (in)		Act Top, MD (ftKB)		Act Btm, MD (ftKB)			
SURFACE		12 1/4		16		535			
PRODUCTION		7 7/8		535		7,058			
Casing Strings									
Csg Des		Run Date		OD (in)	Wt/Len (lb/ft)	Grade	Top, MD (ftKB)	MD (ftKB)	
Surface		1/31/2005		8 5/8	24.00	M-80	16.0	529.0	
Production		2/4/2005		4 1/2	11.60		16.0	7,030.0	
Cement									
Des				Start Date		Top (ftKB)		Btm (ftKB)	
SURFACE CASING CEMENT				1/31/2005		16.0		529.0	
PRODUCTION CASING CEMENT				2/4/2005		3,348.0		7,030.0	
Zone Statuses									
Zone Name		Status Date	Status	Fluid Type		Job		Prod Method	
CODELL		3/11/2005	PR			DRILLING/COMPLETION - ORIGINAL, 1/31/2005...		Flowing	
Perforation Data									
Linked Zone		Bnch/Stg	Entered Shot Total	Top (ftKB)	Btm (ftKB)	Date			
CODELL, ORIGINAL HOLE			60	6,899.00	6,914.00	2/10/2005			
Stimulation Intervals									
Zone			Start Date		Top (ftKB)		Btm (ftKB)		
CODELL, ORIGINAL HOLE			3/10/2005		6,899.0		6,914.0		
Other In Hole									
Run Date		Des		Make		OD (in)	Top (ftKB)	Btm (ftKB)	
Logs									
Date		Type				Top, MD (ftKB)	Btm, MD (ftKB)		
2/4/2005		COMPENSATED DENSITY				3,550.0	7,038.0		
2/4/2005		INDUCTION				529.0	7,058.0		
2/9/2005		CEMENT BOND				3,150.0	6,972.0		
12/17/2014		GYRO				10.0	6,750.0		
Plug Back Total Depths									
Date		Type		Com			Depth (ftKB)		
2/5/2005		FILL		TAG UP WITH JT# 166 @ 7055'			7,055.0		
2/9/2005		FILL		DEPTH LOGGER ON CBL			6,975.0		