

Tank Battery Closure Checklist

COGCC Rule 911.a.(4) Environmental Site Closure Assessment Field Form

Additional attachments (optional):		Pit Closure		Wellhead Closure 11-30-21	Flowline Closure 1-26-22	Partially Buried Vault Closure 1-24-22
Site Name & COGCC Facility Number: <i>UPRC #27-9F</i>		Date: <i>1-24-22</i>				Remediation Project #: <i>18876</i>
Associated Wells: <i>2</i> <i>05-123-15377</i>		Age of Site: <i>years</i>				Number of Photos Attached: <i>5</i>
Location: (GPS coordinates of southeaster berm) <i>40.278163 -104.754082</i>					Estimated Facility Size (acres):	
General Condition of Site: (General observations regarding housekeeping, corrosion, waste management, etc.) <i>Overall good site condition</i>						
USCS Soil Type: <i>SC</i>			Estimated Depth to Groundwater: <i>~6-10'</i>			
Hydrocarbon Impacted Soils / Spills: (Note estimated size and if impact appears to be surficial or extends to an unknown depth) <i>Strong odor observed @ vault + dupleline connection to Sep. - unknown extent</i>						
Salt Crusted Soils or Impacted Vegetation: (Note estimated size and if impact appears to be surficial or extends to an unknown depth) <i>None observed</i>						
Tanks						
Tank Contents	<i>Crude</i>					
Size (barrels)	<i>300</i>					
Age	<i>years</i>					
Construction	<i>Steel</i>					
Tank type	<i>AST</i>					
Visual Integrity	<i>Good</i>					
Condition of tank	<i>Good</i>					
PID Readings						
Soil impacts present at valves or hatch?	<i>None observed</i>					
PID Readings	<i>1-1</i>					
Sample taken? Location/ Sample ID#	<i>TB-SS-01</i> <i>e 0.5'</i>					
Photo Number(s)	<i>See photography</i>					
Other observations regarding tanks:						
Separators						
Separator size						
Vertical or	<i>Non-ventil</i>					
Age	<i>years</i>					
Soil impacts	<i>Strong odor @ dupleline / flowline connections</i>					
PID Readings	<i>523.7</i>	<i>158.3</i>				
Sample taken? Location/ Sample ID#	<i>TB-SS-02</i> <i>e 3'</i>	<i>TB-SS-03</i> <i>e 3'</i>				
Photo Number(s)	<i>See photography</i>					
Other observations regarding separators <i>dupleline connection (TB-SS-02) + flowline connection (TB-SS-03) points assessed</i>						
Third Party Equipment						
Type	<i>Meter House</i>					
Age	<i>years</i>					

Third Party									
Removal Date	N/A - Still emit								
Sample taken?	TB-SS-04								
PID Readings	1.7								
Photo Number(s)	See photoblog								

Other Facility Equipment

Equipment type	VOC Burner				
Equipment Condition	Good - Per (new)				
Age	years				
Soil Impacts	None observed				
PID Readings	1.4				
Sample taken?	TB-SS-05				
Photo Number(s)	See photoblog				

Other observations regarding other facility or third party equipment:

Summary

Was impacted soil identified?	
No	Yes - less than 10 cubic yards <i>as of 1-24-22</i>
Total number of samples field screened: 5	Total number of samples collected: 5 <i>- After analytical receipt</i>
Highest PID Reading: 523.7	Total number of samples submitted to lab for analysis: 3
If more than 10 cubic yards of impacted soil were observed:	
Vertical extent: ~15' x ~15' x ~3'	Estimated spill volume: UNKNOWN
Lateral extent:	Volume of soil removed: TBD
Is additional investigation required? Yes	
Was groundwater encountered during the investigation?	
No	Yes - not impacted or in contact with impacted soils
Measure depth to groundwater:	Was remedial groundwater removal conducted? Yes No
Date Groundwater was encountered:	Commencement date of removal:
Sheen on groundwater? Yes No	Volume of groundwater removed prior to sampling:
Free product observed? Yes No	Volume of groundwater removed post sampling:
Total number of samples collected:	Total Volume of groundwater removed:
Total number of samples submitted to lab for analysis:	

Buried or Partially Buried Vessel Closure Checklist

COGCC Rule 911.a.(4) Environmental Site Closure Assessment Field Form

Additional attachments (optional):	Pit Closure	Wellhead Closure 11-30-21	Flowline Closure 1-26-22	Tank Battery Closure 1-24-22
Site Name & COGCC Facility Number: <u>UPLC #27-7F</u>		Date: <u>1-24-22</u>		Remediation Project #: <u>18876</u>
Associated Wells: <u>1</u> <u>05-123-15377</u>		Age of Site: <u>years</u>		Number of Photos Attached: <u>1</u>
Location: (GPS coordinates of vault or southeastern tank berm for multiple) <u>40.278243 / -104.754137</u>				Estimated Facility Size (acres):

General Condition of Site: (General observations regarding housekeeping, corrosion, waste management, etc.)

Overall good site condition

USCS Soil Type: <u>SC</u>	Estimated Depth to Groundwater: <u>~6-10'</u>
---------------------------	---

Hydrocarbon Impacted Soils / Spills: (Note estimated size and if impact appears to be surficial or extends to an unknown depth)

Petroleum hydrocarbon odor observed throughout. Staining on east well + base. - unknown extent

Salt Crusted Soils or Impacted Vegetation: (Note estimated size and if impact appears to be surficial or extends to an unknown depth)

none observed

Buried or Partially Buried Vessels

Tank Contents	<u>Produced Water</u>				
Size (barrels)	<u>53</u>				
Age	<u>years</u>				
Construction	<u>Corrug</u>				
Visual Integrity	<u>Good - Per Crew</u>				
Condition of tank	<u>Black w/ odor</u>				
PID Readings					
Condition of	<u>drumlines in good condition</u>				
PID Readings	<u>47.8</u>	<u>397.7</u>	<u>56.8</u>	<u>9.9</u>	<u>2352</u>
Sample taken?	<u>WV-SS-01</u>	<u>WV-SS-02</u>	<u>WV-SS-03</u>	<u>WV-SS-04</u>	<u>WV-FS-01</u>
Location/Sample ID#	<u>03'</u>	<u>03'</u>	<u>03'</u>	<u>03'</u>	<u>04'</u>
Photo Number(s)	<u>See photoblog</u>				

Other observations regarding partially buried vessels:

Summary

Was impacted soil identified?	
No	Yes - less than 10 cubic yards
<u>Yes</u> - more than 10 cubic yards	
Total number of samples field screened: <u>5</u>	Total number of samples collected: <u>5</u>
Highest PID Reading: <u>397.7</u>	Total number of samples submitted to lab for analysis: <u>5</u>
If more than 10 cubic yards of impacted soil were observed:	
Vertical extent: <u>4'</u>	Estimated spill volume: <u>Unknown</u>
Lateral extent: <u>~13' x ~13'</u>	Volume of soil removed: <u>TBD</u>
Is additional investigation required? <u>Yes</u>	
Was groundwater encountered during the investigation?	
<u>No</u>	Yes - not impacted or in contact with impacted soils
Yes - groundwater impacted and/or in contact with impacted soils	
Measured depth to groundwater:	Was remedial groundwater removal conducted? Yes <u>No</u>
Date Groundwater was encountered:	Commencement date of removal:
Sheen on groundwater? <u>N/A</u> Yes No	Volume of groundwater removed prior to sampling:
Free product observed? <u>N/A</u> Yes No	Volume of groundwater removed post sampling:
Total number of samples collected:	Total Volume of groundwater removed:
Total number of samples submitted to lab for analysis:	



FIGURES

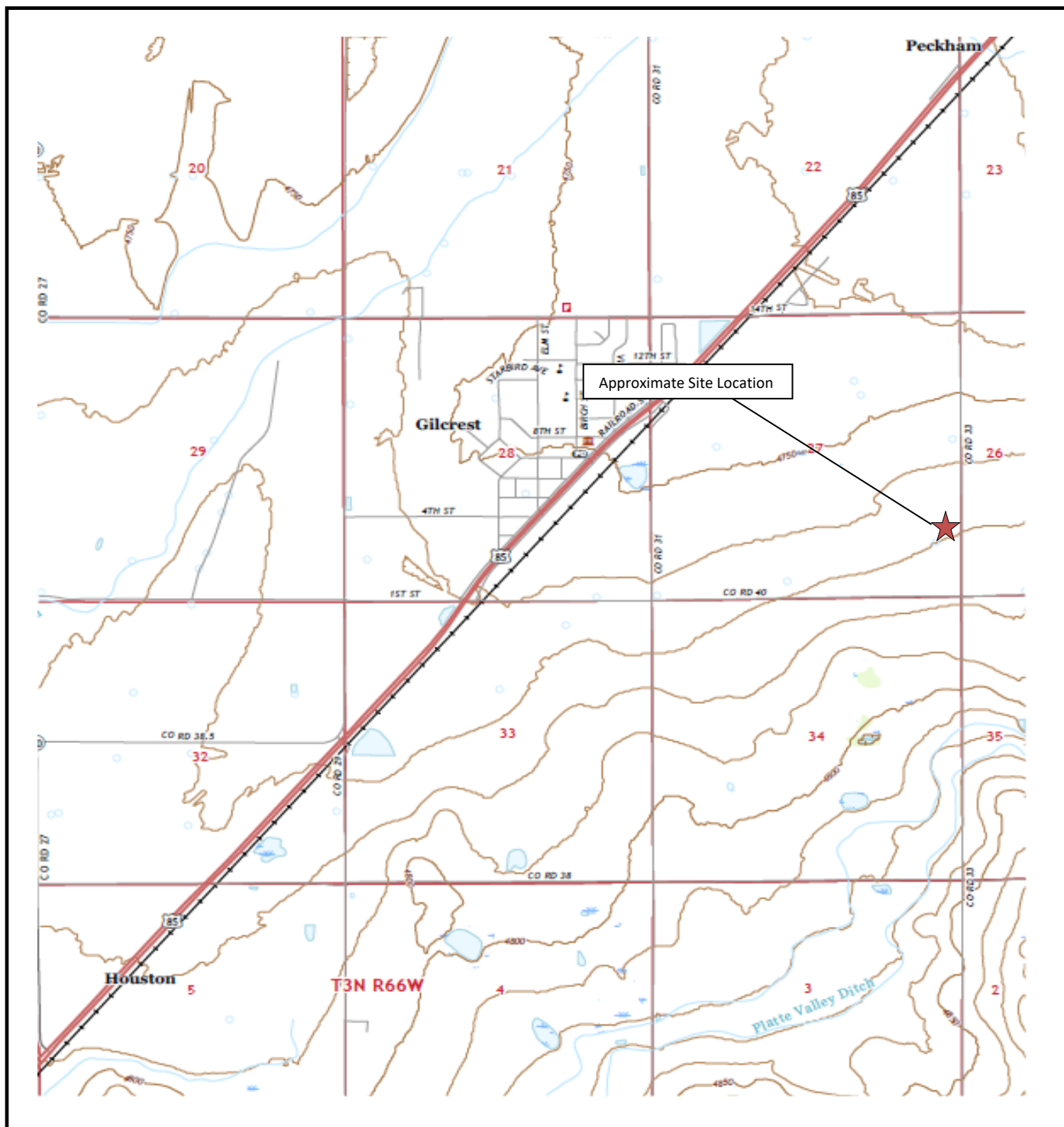
Figure 1: Topographic Site Location Map

Figure 2: Aerial Site Location Map

Figure 3: Soil Analytical Map

Figure 4: Polycyclic Aromatic Hydrocarbons Map

Figure 5: Metals in Soil Map



Topographic Site Location Map

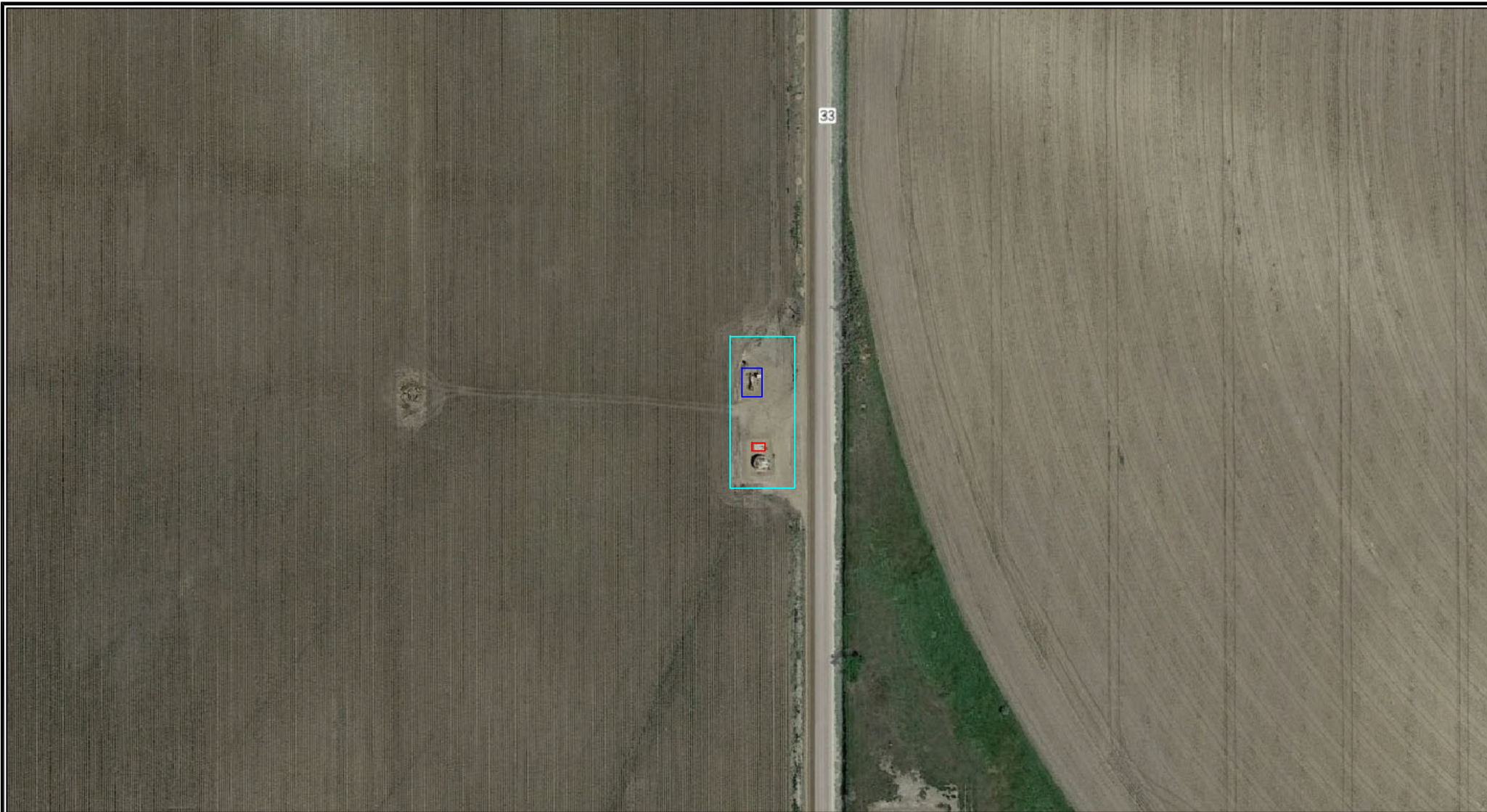
UPRC #27-9F Tank Battery
 Closure Assessment
 40.278347 / -104.754157
 NE¼ SE¼ SEC.27 T4N R66W 6PM
 Weld County, Colorado
 Location ID 327969
 Remediation # 18876



EAGLE
 ENVIRONMENTAL
 CONSULTING, INC.

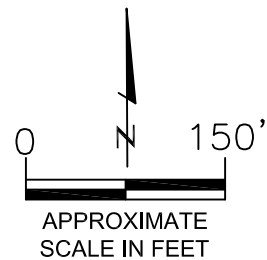
Source: USGS 7.5 Minute Topographic
 Valley View School, CO Quadrangle 2019

Figure 1



LEGEND

- FORMER UPRC #27-9F TANK BATTERY (DECOMMISSIONED)
- APPROXIMATE WATER VAULT LOCATION (REMOVED)
- SEPARATOR CONTAINMENT AREA (DECOMMISSIONED)



AERIAL SITE LOCATION MAP
 UPRC #27-9F TANK BATTERY
 CLOSURE ASSESSMENT
 40.278347 / -104.754157
 NE¼ SE¼ SEC.27 T4N R66W 6PM
 WELD COUNTY, COLORADO
 LOCATION ID 327969
 REMEDIATION # 18876

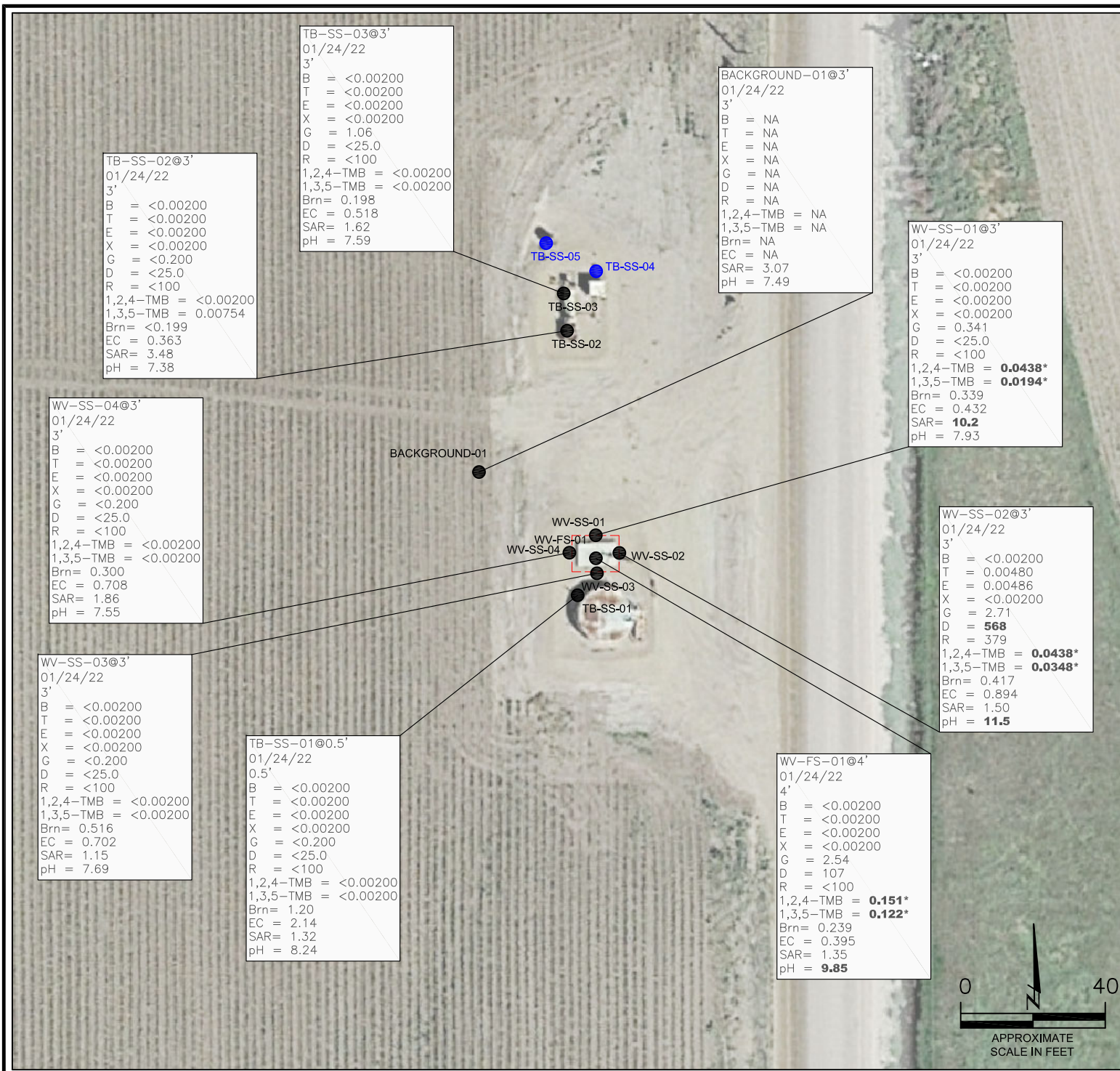
DATE: 02/07/22

FIG. NO.
2

DRAWN BY:
AMN



EAGLE
 ENVIRONMENTAL
 CONSULTING, INC.
8000 W 44th Ave, Wheat Ridge, CO 80033
 Ph: 303-433-0479 • F: 303-325-5449



LEGEND

--- INITIAL VAULT ASSESSMENT BOUNDARIES

SS-02 APPROXIMATE LOCATION OF SOIL SAMPLES FIELD SCREENED, ONLY, WITH PHOTOIONIZATION DETECTOR (PID)

SS-01 APPROXIMATE LOCATION OF SOIL SAMPLES SUBMITTED FOR LABORATORY ANALYSIS

PARAMETERS

SAMPLE LOCATION
DATE
DEPTH (FEET)
B = BENZENE (mg/kg)
T = TOLUENE (mg/kg)
E = ETHYLBENZENE (mg/kg)
X = TOTAL XYLENES (mg/kg)
G = TPH-GRO (mg/kg)
D = TPH-DRO (mg/kg)
R = TPH-RRO (mg/kg)
1,2,4-TMB = 1,2,4 TRIMETHYLBENZENE (mg/kg)
1,3,5-TMB = 1,3,5 TRIMETHYLBENZENE (mg/kg)
Brn = BORON (mg/L)
EC = SPECIFIC CONDUCTANCE (mmhos/cm)
SAR = SODIUM ADSORPTION RATIO
pH = pH (pH UNITS)

mg/kg = MILLIGRAMS PER KILOGRAM
mg/L = MILLIGRAMS PER LITER
mmhos/cm = MILLIMHOS PER CENTIMETER

TPH-GRO = TOTAL PETROLEUM HYDROCARBONS - GASOLINE RANGE ORGANICS
TPH-DRO = TOTAL PETROLEUM HYDROCARBONS - DIESEL RANGE ORGANICS
TPH-RRO = TOTAL PETROLEUM HYDROCARBONS - RESIDUAL RANGE ORGANICS

NOTE: VALUES PRESENTED WITH A LESS THAN SYMBOL (<) DID NOT CONTAIN CONCENTRATIONS AT OR ABOVE LABORATORY DETECTION LIMITS

VALUES PRESENTED IN **BOLD** VALUES CONTAIN CONCENTRATIONS EXCEEDING COGCC TABLE 915-1 REGULATORY LIMITS FOR THAT COMPOUND

VALUES PRESENTED WITH AN ASTERISK (*) CONTAIN CONCENTRATIONS EXCEEDING THE COGCC TABLE 915-1 PROTECTION OF GROUNDWATER SOIL SCREENING LEVELS FOR THAT COMPOUND

COGCC = COLORADO OIL AND GAS CONSERVATION COMMISSION

SOIL ANALYTICAL MAP
UPRC #27-9F TANK BATTERY
CLOSURE ASSESSMENT
40.278347 / -104.754157
NE¼ SE¼ SEC.27 T4N R66W 6PM
WELD COUNTY, COLORADO
LOCATION ID 327969
REMEDIATION # 18876

DATE:
02/17/22

DRAWN BY:
AMN

FIG. NO.
3



EAGLE
ENVIRONMENTAL
CONSULTING, INC.
8000 W 44th Ave, Wheat Ridge, CO 80033
Ph: 303-433-0479 • F: 303-325-5449

TB-SS-03@3'
01/24/22
3'
ND = <0.00067
1-Methylnaphthalene = ND
2-Methylnaphthalene = ND
Acenaphthene = ND
Anthracene = ND
Benzo(a)anthracene = 0.000579
Benzo(a)pyrene = ND
Benzo(b)fluoranthene = 0.0015
Benzo(k)fluoranthene = 0.000519
Chrysene = 0.000676
Dibenzo(a,h)anthracene = ND
Fluoranthene = 0.000857
Fluorene = ND
Indeno(1,2,3-CD)pyrene = 0.000926
Naphthalene = ND
Pyrene = 0.00139

TB-SS-02@3'
01/24/22
3'
ND = <0.00067
1-Methylnaphthalene = ND
2-Methylnaphthalene = 0.00073
Acenaphthene = ND
Anthracene = ND
Benzo(a)anthracene = 0.000622
Benzo(a)pyrene = ND
Benzo(b)fluoranthene = 0.00143
Benzo(k)fluoranthene = 0.000538
Chrysene = 0.000782
Dibenzo(a,h)anthracene = ND
Fluoranthene = 0.00062
Fluorene = ND
Indeno(1,2,3-CD)pyrene = 0.000641
Naphthalene = ND
Pyrene = 0.00065

WV-SS-04@3'
01/24/22
3'
ND = <0.00067
1-Methylnaphthalene = **0.00642***
2-Methylnaphthalene = 0.0141
Acenaphthene = 0.000374
Anthracene = ND
Benzo(a)anthracene = ND
Benzo(a)pyrene = ND
Benzo(b)fluoranthene = 0.00117
Benzo(k)fluoranthene = ND
Chrysene = 0.000765
Dibenzo(a,h)anthracene = ND
Fluoranthene = 0.000614
Fluorene = 0.000713
Indeno(1,2,3-CD)pyrene = 0.000716
Naphthalene = **0.00661***
Pyrene = 0.00123

WV-SS-03@3'
01/24/22
3'
ND = <0.00067
1-Methylnaphthalene = ND
2-Methylnaphthalene = ND
Acenaphthene = ND
Anthracene = ND
Benzo(a)anthracene = 0.00149
Benzo(a)pyrene = 0.00236
Benzo(b)fluoranthene = 0.00249
Benzo(k)fluoranthene = 0.000733
Chrysene = 0.00179
Dibenzo(a,h)anthracene = ND
Fluoranthene = 0.00227
Fluorene = ND
Indeno(1,2,3-CD)pyrene = 0.00135
Naphthalene = ND
Pyrene = 0.00288

TB-SS-01@0.5'
01/24/22
0.5'
ND = <0.00067
1-Methylnaphthalene = ND
2-Methylnaphthalene = ND
Acenaphthene = ND
Anthracene = ND
Benzo(a)anthracene = ND
Benzo(a)pyrene = ND
Benzo(b)fluoranthene = 0.00087
Benzo(k)fluoranthene = ND
Chrysene = 0.000631
Dibenzo(a,h)anthracene = ND
Fluoranthene = 0.000594
Fluorene = ND
Indeno(1,2,3-CD)pyrene = ND
Naphthalene = 0.00101
Pyrene = 0.000677

WV-FS-01@4'
01/24/22
4'
ND = <0.00067
1-Methylnaphthalene = **0.0211***
2-Methylnaphthalene = **0.038***
Acenaphthene = 0.0123
Anthracene = ND
Benzo(a)anthracene = 0.00236
Benzo(a)pyrene = 0.00254
Benzo(b)fluoranthene = 0.00131
Benzo(k)fluoranthene = ND
Chrysene = 0.00647
Dibenzo(a,h)anthracene = ND
Fluoranthene = 0.000938
Fluorene = 0.0185
Indeno(1,2,3-CD)pyrene = 0.00153
Naphthalene = **0.00839***
Pyrene = 0.00745

WV-SS-01@3'
01/24/22
3'
ND = <0.00067
1-Methylnaphthalene = 0.0051
2-Methylnaphthalene = 0.0139
Acenaphthene = ND
Anthracene = ND
Benzo(a)anthracene = ND
Benzo(a)pyrene = 0.000643
Benzo(b)fluoranthene = 0.000816
Benzo(k)fluoranthene = ND
Chrysene = 0.000647
Dibenzo(a,h)anthracene = ND
Fluoranthene = 0.000794
Fluorene = ND
Indeno(1,2,3-CD)pyrene = ND
Naphthalene = **0.00609***
Pyrene = 0.000892

WV-SS-02@3'
01/24/22
3'
ND = <0.00335
1-Methylnaphthalene = **0.0244***
2-Methylnaphthalene = **0.0405***
Acenaphthene = 0.0281
Anthracene = 0.00418
Benzo(a)anthracene = 0.00537
Benzo(a)pyrene = 0.0072
Benzo(b)fluoranthene = ND
Benzo(k)fluoranthene = ND
Chrysene = 0.0164
Dibenzo(a,h)anthracene = ND
Fluoranthene = 0.00716
Fluorene = 0.0615
Indeno(1,2,3-CD)pyrene = ND
Naphthalene = **0.00594***
Pyrene = 0.0202

LEGEND

----- INITIAL VAULT ASSESSMENT BOUNDARIES

● SS-02 APPROXIMATE LOCATION OF SOIL SAMPLES FIELD SCREENED, ONLY, WITH PHOTOIONIZATION DETECTOR (PID)

● SS-02 APPROXIMATE LOCATION OF SOIL SAMPLES SUBMITTED FOR LABORATORY ANALYSIS

PARAMETERS

SAMPLE LOCATION
DATE SAMPLE COLLECTED
APPROXIMATE DEPTH

POLYCYCLIC AROMATIC HYDROCARBONS (PAHs)

NOTE:
CONCENTRATIONS PRESENTED IN mg/kg

mg/kg = MILLIGRAMS PER KILOGRAM

ND = NON-DETECT

NOTES:
VALUES PRESENTED WITH A LESS THAN SYMBOL (<) DID NOT CONTAIN CONCENTRATIONS AT OR ABOVE LABORATORY REPORTING LIMITS

VALUES PRESENTED IN **BOLD** VALUES CONTAIN CONCENTRATIONS EXCEEDING COGCC TABLE 915-1 REGULATORY LIMITS FOR THAT COMPOUND

VALUES PRESENTED WITH AN ASTERISK (*) CONTAIN CONCENTRATIONS EXCEEDING THE COGCC TABLE 915-1 PROTECTION OF GROUNDWATER SOIL SCREENING LEVELS FOR THAT COMPOUND

COGCC - COLORADO OIL AND GAS CONSERVATION COMMISSION

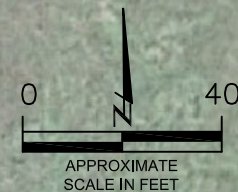
POLYCYCLIC AROMATIC HYDROCARBONS MAP
UPRC #27-9F TANK BATTERY
CLOSURE ASSESSMENT
40.278347 / -104.754157
NE¼ SE¼ SEC.27 T4N R66W 6PM
WELD COUNTY, COLORADO
LOCATION ID 327969
REMEDATION # 18876

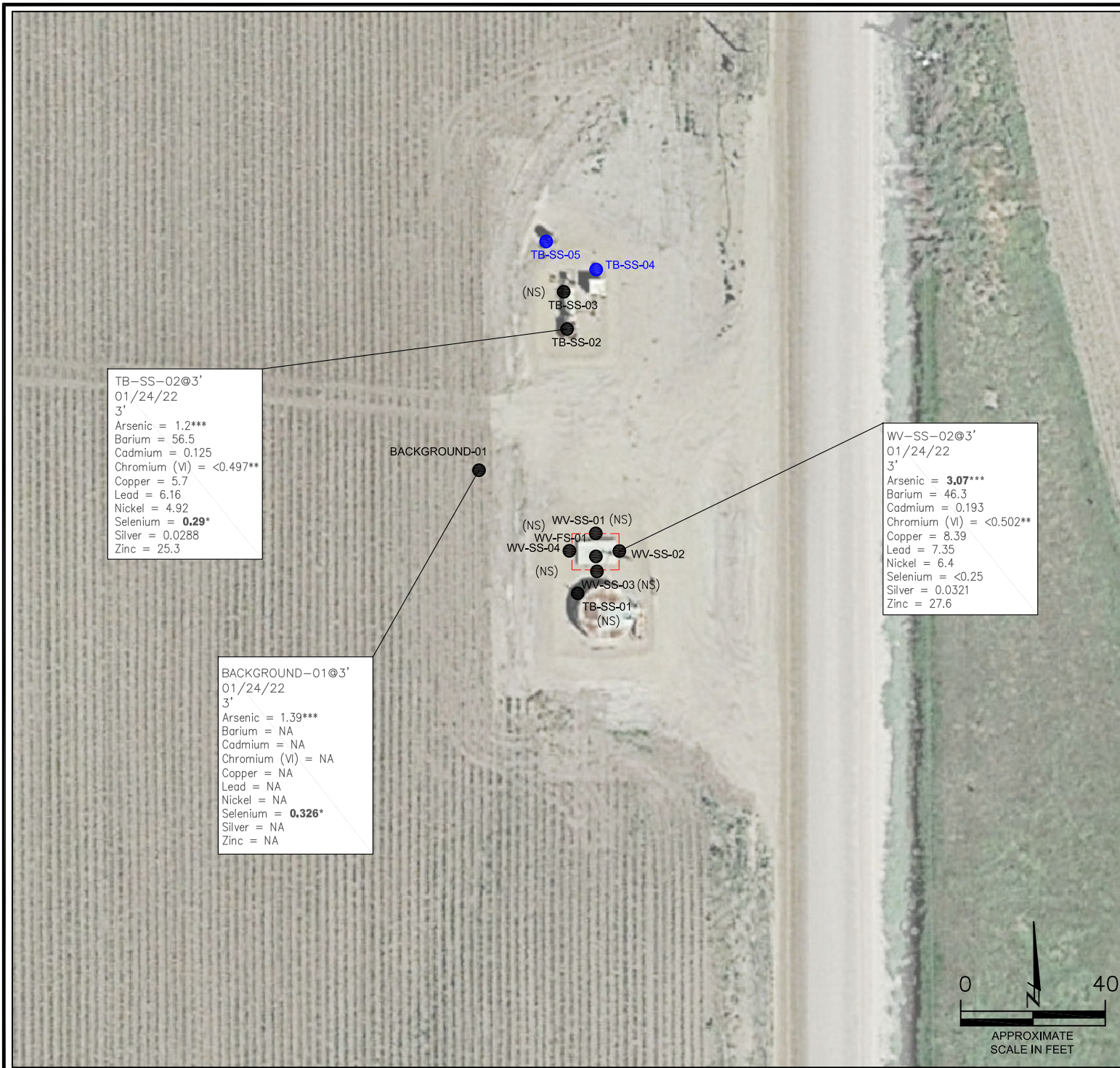
DATE:
02/16/22
DRAWN BY:
AMN

FIG.
NO. 4



EAGLE
ENVIRONMENTAL
CONSULTING, INC.
8000 W 44th Ave, Wheat Ridge, CO 80033
Ph: 303-433-0479 • F: 303-325-5449





LEGEND

- INITIAL VAULT ASSESSMENT BOUNDARIES
- SS-02 APPROXIMATE LOCATION OF SOIL SAMPLES FIELD SCREENED, ONLY, WITH PHOTOIONIZATION DETECTOR (PID)
- SS-02 APPROXIMATE LOCATION OF SOIL SAMPLES SUBMITTED FOR LABORATORY ANALYSIS

PARAMETERS

SAMPLE LOCATION
DATE SAMPLE COLLECTED
APPROXIMATE DEPTH
Barium = (mg/kg)
Cadmium = (mg/kg)
Chromium (VI) = (mg/kg)
Copper = (mg/kg)
Lead = (mg/kg)
Nickel = (mg/kg)
Selenium = (mg/kg)
Silver = (mg/kg)
Zinc = (mg/kg)

mg/kg = MILLIGRAMS PER KILOGRAM

(NS) – NOT SAMPLED

NA – NOT ANALYZED

NOTE:
VALUES PRESENTED WITH A LESS THAN SYMBOL (<) DID NOT CONTAIN CONCENTRATIONS AT OR ABOVE LABORATORY DETECTION LIMITS

VALUES PRESENTED IN **BOLD** VALUES CONTAIN CONCENTRATIONS EXCEEDING COGCC TABLE 915-1 VALUES.

VALUES PRESENTED WITH ASTERISK (*) EXCEED COGCC TABLE 915-1 "PROTECTION OF GROUNDWATER SOIL SCREENING LEVELS" FOR THAT COMPOUND.

**ACHIEVABLE PRACTICAL QUANTITATIVE LIMITS FOR HEXAVALENT CHROMIUM (Cr VI) IN SOILS IS IN THE RANGE OF 0.1 TO 1 mg/kg.

***ARSENIC IS NATURALLY OCCURRING IN COLORADO. LOCAL CLEAN-UP LEVEL (1.73 mg/kg) IS 1.25*LOCAL BACKGROUND (1.39 mg/kg)

COGCC = COLORADO OIL AND GAS CONSERVATION COMMISSION

METALS IN SOIL MAP
UPRC #27-9F TANK BATTERY
CLOSURE ASSESSMENT
40.278347 / -104.754157
NE¼ SEC.27 T4N R66W 6PM
WELD COUNTY, COLORADO
LOCATION ID 327969
REMEDATION # 18876

DATE:
02/17/22

DRAWN BY:
AMN

FIG.
NO. 5



EAGLE
ENVIRONMENTAL
CONSULTING, INC.
8000 W 44th Ave, Wheat Ridge, CO 80033
Ph: 303-433-0479 • F: 303-325-5449



TABLES

Table 1: Photoionization Detector Reading Summary

Table 2: Soil Analytical Results Summary

Table 3: Polycyclic Aromatic Hydrocarbons Analytical Results Summary

Table 4: Metals Analytical Results Summary

TABLE 1
PHOTOIONIZATION DETECTOR READING SUMMARY
UPRC #27-9F TANK BATTERY
CLOSURE ASSESSMENT
40.278347 / -104.754157
NE1/4 SE1/4 SEC.27 T4N R66W 6PM
WELD COUNTY, COLORADO
LOCATION ID 327969
REMEDIATION # 18876

Sample Location (Latitude/Longitude)	Date	Approximate Depth (feet)	PID Reading (ppm-v)	Lab Submission (Y/N)
TB-SS-01 @ 0.5' (40.278211 / -104.754157)	01/24/22	0.5	1.1	Y
TB-SS-02 @ 3' (40.278408 / -104.754168)	01/24/22	3	523.7	Y
TB-SS-03 @ 3' (40.278438 / -104.754175)	01/24/22	3	158.3	Y
TB-SS-04 @ 0.5' (40.278457 / -104.754139)	01/24/22	0.5	1.7	N
TB-SS-05 @ 0.5' (40.278477 / -104.754182)	01/24/22	0.5	1.4	N
WV-SS-01 @ 3' (40.278255 / -104.754138)	01/24/22	3	47.8	Y
WV-SS-02 @ 3' (40.278241 / -104.754114)	01/24/22	3	397.7	Y
WV-SS-03 @ 3' (40.278229 / -104.754137)	01/24/22	3	56.8	Y
WV-SS-04 @ 3' (40.278241 / -104.754162)	01/24/22	3	9.9	Y
WV-FS-01 @ 4' (40.278242 / -104.754140)	01/24/22	4	235.2	Y
Background-01 @ 3' (40.278295 / -104.754253)	01/24/22	3	2.2	Y
(Y/N) = Yes or No ppm-v = parts per million by volume PID = photoionization detector				

TABLE 2
SOIL ANALYTICAL RESULTS SUMMARY
UPRC #27-9F TANK BATTERY
CLOSURE ASSESSMENT
40.278347 / -104.754157
NE1/4 SE1/4 SEC.27 T4N R66W 6PM
WELD COUNTY, COLORADO
LOCATION ID 327969
REMEDATION # 18876

Sample Location (Latitude/Longitude)	Date	Approximate Depth (feet)	PID Reading (ppm-v)	Benzene (mg/kg)	Toluene (mg/kg)	Ethylbenzene (mg/kg)	Total Xylenes (mg/kg)	TPH-GRO (mg/kg)	TPH-DRO (mg/kg)	TPH-RRO (mg/kg)	1,2,4-TMB (mg/kg)	1,3,5-TMB (mg/kg)	Boron (mg/L)	Specific Conductance (mmhos/cm)	pH (pH units)	SAR
COGCC Table 915-1 Residential Screening Levels (mg/kg)				1.20	490	5.8	58	500			30	27	2	<4	6-8.3	<6
COGCC Table 915-1 Protection of Groundwater Soil Screening Levels				0.0026	0.69	0.78	9.9	--			0.0081	0.0087	--	--	--	--
TB-SS-01 @ 0.5' (40.278211 / -104.754157)	01/24/22	0.5	1.1	<0.00200	<0.00200	<0.00200	<0.00200	<0.200	<25.0	<100	<0.00200	<0.00200	1.20	2.14	8.24	1.32
TB-SS-02 @ 3' (40.278408 / -104.754168)	01/24/22	3	523.7	<0.00200	<0.00200	<0.00200	<0.00200	<0.200	<25.0	<100	<0.00200	0.00754	<0.199	0.363	7.38	3.48
TB-SS-03 @ 3' (40.278438 / -104.754175)	01/24/22	3	158.3	<0.00200	<0.00200	<0.00200	<0.00200	1.06	<25.0	<100	<0.00200	<0.00200	0.198	0.518	7.59	1.62
WV-SS-01 @ 3' (40.278255 / -104.754138)	01/24/22	3	47.8	<0.00200	<0.00200	<0.00200	<0.00200	0.341	<25.0	<100	0.0438*	0.0194*	0.339	0.432	7.93	10.2
WV-SS-02 @ 3' (40.278241 / -104.754114)	01/24/22	3	397.7	<0.00200	0.00480	0.00486	<0.00200	2.71	568	379	0.0438*	0.0348*	0.417	0.894	11.5	1.50
WV-SS-03 @ 3' (40.278229 / -104.754137)	01/24/22	3	56.8	<0.00200	<0.00200	<0.00200	<0.00200	<0.200	<25.0	<100	<0.00200	<0.00200	0.516	0.702	7.69	1.15
WV-SS-04 @ 3' (40.278241 / -104.754162)	01/24/22	3	9.9	<0.00200	<0.00200	<0.00200	<0.00200	<0.200	<25.0	<100	<0.00200	<0.00200	0.300	0.708	7.55	1.86
WV-FS-01 @ 4' (40.278242 / -104.754140)	01/24/22	4	235.2	<0.00200	<0.00200	<0.00200	<0.00200	2.54	107	<100	0.151*	0.122*	0.239	0.395	9.85	1.35
Background-01 @ 3' (40.278295 / -104.754253)	01/24/22	3	2.2	NA	NA	NA	NA	NA	NA	NA	NA	NA	NA	NA	7.49	3.07
COGCC = Colorado Oil and Gas Conservation Commission mg/kg = milligrams per kilogram mmhos/cm = millimhos per centimeter PID = Photoionization Detector ppm-v = parts per million by volume mg/L = milligrams per liter SAR = Sodium Adsorption Ratio Note: Values presented with a less than symbol (<) did not contain concentrations at or above the laboratory MDL and/or reporting limit. Note: Values presented in BOLD contained concentrations exceeding COGCC Table 915-1 Regulatory Limits. Values presented with asterisk (*) exceed COGCC Table 915-1 protection of groundwater soil screening levels for that compound																
NA - Not Analyzed TPH-GRO = Total Petroleum Hydrocarbons - Gasoline Range Organics TPH-DRO = Total Petroleum Hydrocarbons - Diesel Range Organics TPH-RRO = Total Petroleum Hydrocarbons - Residual Range Organics 1,2,4-TMB = 1,2,4-Trimethylbenzene 1,3,5-TMB = 1,3,5-Trimethylbenzene MDL = Minimum Detection Limits																

TABLE 3
PAH ANALYTICAL RESULTS SUMMARY
UPRC #27-9F TANK BATTERY
CLOSURE ASSESSMENT
40.278347 / -104.754157
NE1/4 SE1/4 SEC.27 T4N R66W 6PM
WELD COUNTY, COLORADO
LOCATION ID 327969
REMEDATION # 18876

Sample Location (Latitude/Longitude)	Date	Approximate Depth (feet)	PID Reading (ppm-v)	1-Methyl- naphthalene (mg/kg)	2-Methyl-naphthalene (mg/kg)	Acenaphthene (mg/kg)	Anthracene (mg/kg)	Benzo(a)-anthracene (mg/kg)	Benzo(a)- pyrene (mg/kg)	Benzo(b)- fluoranthene (mg/kg)	Benzo(k)- fluoranthene (mg/kg)	Chrysene (mg/kg)	Dibenzo(a,h)- anthracene (mg/kg)	Fluoranthene (mg/kg)	Fluorene (mg/kg)	Indeno(1,2,3- cd)-pyrene (mg/kg)	Naphthalene (mg/kg)	Pyrene (mg/kg)
COGCC Table 915-1 Residential Screening Levels				18	24	360	1,800	1.1	0.11	1.1	11	110	0.11	240	240	1.1	2	180
COGCC Table 915-1 Protection of Groundwater Soil Screening Levels				0.006	0.019	0.55	5.8	0.011	0.24	0.3	2.9	9	0.096	8.9	0.54	0.98	0.0038	1.3
TB-SS-01 @ 0.5' (40.278211 / -104.754157)	01/24/22	0.5	1.1	<0.00067	<0.00067	<0.00067	<0.00067	<0.00067	<0.00067	0.00087	<0.00067	0.000631	<0.00067	0.000594	<0.00067	<0.00067	0.00101	0.000677
TB-SS-02 @ 3' (40.278408 / -104.754168)	01/24/22	3	523.7	<0.00067	0.00073	<0.00067	<0.00067	0.000622	<0.00067	0.00143	0.000538	0.000782	<0.00067	0.00062	<0.00067	0.000641	<0.00067	0.00065
TB-SS-03 @ 3' (40.278438 / -104.754175)	01/24/22	3	158.3	<0.00067	<0.00067	<0.00067	<0.00067	0.000579	<0.00067	0.0015	0.000519	0.000676	<0.00067	0.000857	<0.00067	0.000926	<0.00067	0.00139
WV-SS-01 @ 3' (40.278255 / -104.754138)	01/24/22	3	47.8	0.0051	0.0139	<0.00067	<0.00067	<0.00067	0.000643	0.000816	<0.00067	0.000647	<0.00067	0.000794	<0.00067	<0.00067	0.00609*	0.000892
WV-SS-02 @ 3' (40.278241 / -104.754114)	01/24/22	3	397.7	0.0244*	0.0405*	0.0281	0.000418	0.00537	0.0072	<0.00335	<0.00335	0.0164	<0.00335	0.00716	0.0615	<0.00335	0.00594*	0.0202
WV-SS-03 @ 3' (40.278229 / -104.754137)	01/24/22	3	56.8	<0.00067	<0.00067	<0.00067	<0.00067	0.00149	0.00236	0.00249	0.000733	0.00179	<0.00067	0.00227	<0.00067	0.00135	<0.00067	0.00288
WV-SS-04 @ 3' (40.278241 / -104.754162)	01/24/22	3	9.9	0.00642*	0.0141	0.000374	<0.00067	<0.00067	<0.00067	0.00117	<0.00067	0.000765	<0.00067	0.000614	0.000713	0.000716	0.00661*	0.00123
WV-FS-01 @ 4' (40.278242 / -104.754140)	01/24/22	4	235.2	0.0211*	0.038*	0.0123	<0.00067	0.00236	0.00254	0.00131	<0.00067	0.00647	<0.00067	0.000938	0.0185	0.00153	0.00839*	0.00745
COGCC = Colorado Oil and Gas Conservation Commission PID = Photoionization Detector mg/kg = milligrams per kilogram ppm-v = parts per million by volume Note: Values presented with a less than symbol (<) did not contain concentrations at or above the laboratory reporting limit. Note: Values presented in BOLD contained concentrations exceeding COGCC Table 915-1 Regulatory Limits. Values presented with asterisk (*) exceed COGCC Table 915-1 protection of groundwater soil screening levels for that compound																		

TABLE 4
METALS ANALYTICAL RESULTS SUMMARY
UPRC #27-9F TANK BATTERY
CLOSURE ASSESSMENT
40.278347 / -104.754157
NE1/4 SE1/4 SEC.27 T4N R66W 6PM
WELD COUNTY, COLORADO
LOCATION ID 327969
REMEDATION # 18876

Sample Location (Latitude/Longitude)	Date	Approximate Depth (feet)	Arsenic (mg/kg)	Barium (mg/kg)	Cadmium (mg/kg)	Hexavalent Chromium (mg/kg)	Copper (mg/kg)	Lead (mg/kg)	Nickel (mg/kg)	Selenium (mg/kg)	Silver (mg/kg)	Zinc (mg/kg)
COGCC Table 915-1 Residential Screening Levels			0.68***	15,000	71	0.3**	3,100	400	1,500	390	390	23,000
COGCC Table 915-1 Protection of Groundwater Soil Screening Levels			0.29***	82	0.38	0.00067**	46	14	26	0.26	0.8	370
Local Cleanup Levels			1.73***	--	--	0.1 to 1**	--	--	--	--	--	--
TB-SS-02 @ 3' (40.278408 / -104.754168)	01/24/22	3	1.2***	56.5	0.125	<0.497**	5.70	6.16	4.9	0.29*	0.0288	25.3
WV-SS-02 @ 3' (40.278241 / -104.754114)	01/24/22	3	3.07***	46.3	0.193	<0.502**	8.39	7.35	6.4	<0.25	0.0321	27.6
Background-01 @ 3' (40.278295 / -104.754253)	01/24/22	3	1.39***	NA	NA	NA	NA	NA	NA	0.326*	NA	NA
<p>COGCC = Colorado Oil and Gas Conservation Commission NA - Not Analyzed</p> <p>mg/kg = milligrams per kilogram (1) Sample required dilution due to matrix interference, raising laboratory reporting and detection limits. Sample non-detect</p> <p>Notes: Values presented with a less than symbol (<) did not contain concentrations at or above the laboratory reporting limit or minimum detection levels.</p> <p>Values presented in BOLD contained concentrations exceeding applicable COGCC Table 915-1 Regulatory Limits</p> <p>Values presented with an asterisk (*) contained concentrations exceeding COGCC Table 915-1 Protection of Groundwater Soil Screening Levels</p> <p>**Achievable practical quantitative limits for Hexavalent Chromium in soils is in the range of 0.1 to 1 mg/kg.</p> <p>***Arsenic is naturally occurring in Colorado. Local "clean-up level" (1.73 mg/kg) is 1.25*Background (1.39 mg/kg)</p>												



ATTACHMENT A

Photo Log

UPRC #27-9F Tank Battery

Location ID 327969

Remediation # 18876

Closure Assessment

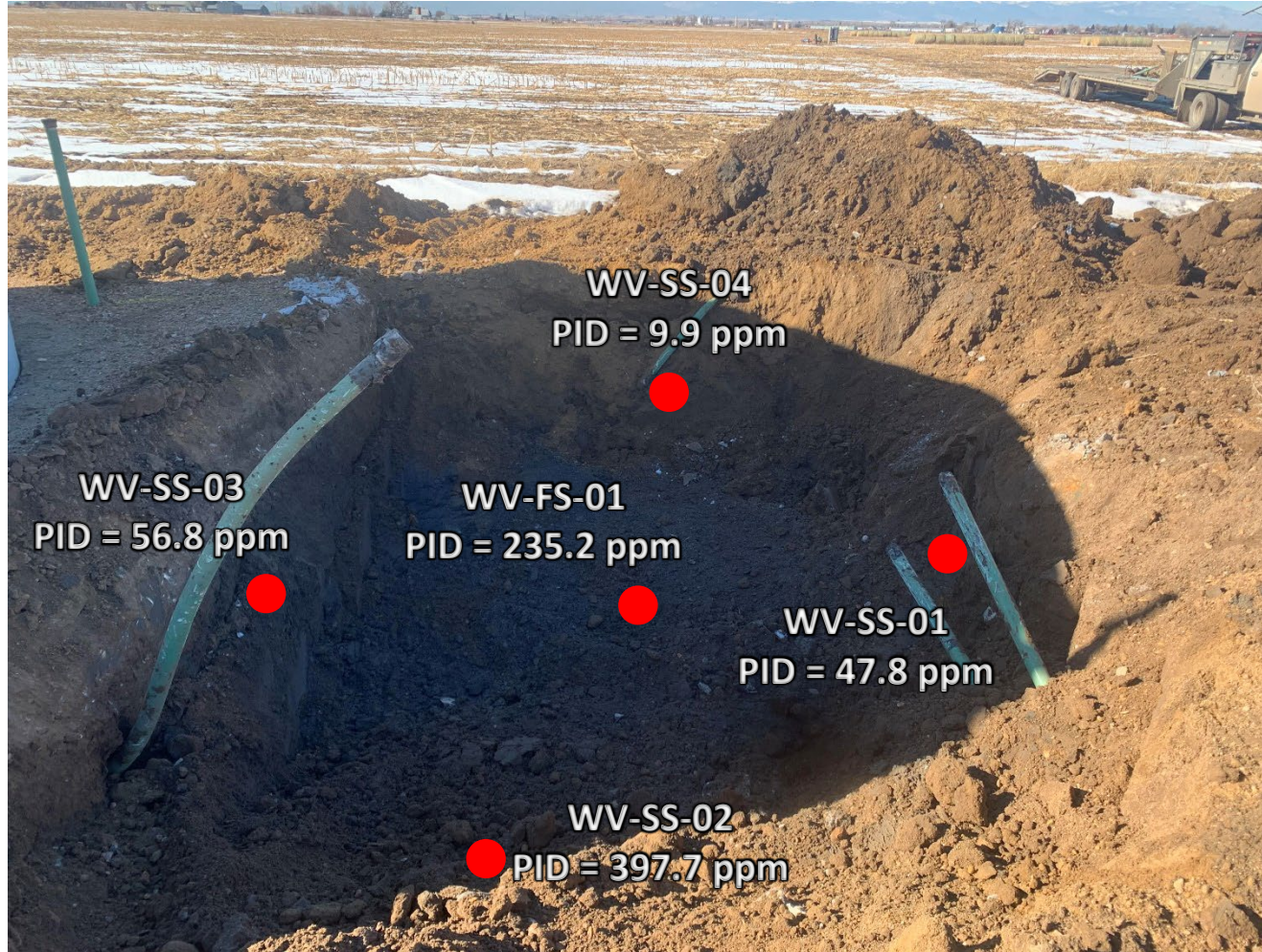
January 2022



EAGLE
ENVIRONMENTAL
CONSULTING, INC.
8000 W 44th Ave, Wheat Ridge, CO 80033
Ph: 303-433-0479 • F: 303-325-5449



Water Vault Excavation – 01/24/22



Looking west at water vault excavation
Petroleum hydrocarbon staining and odor observed throughout

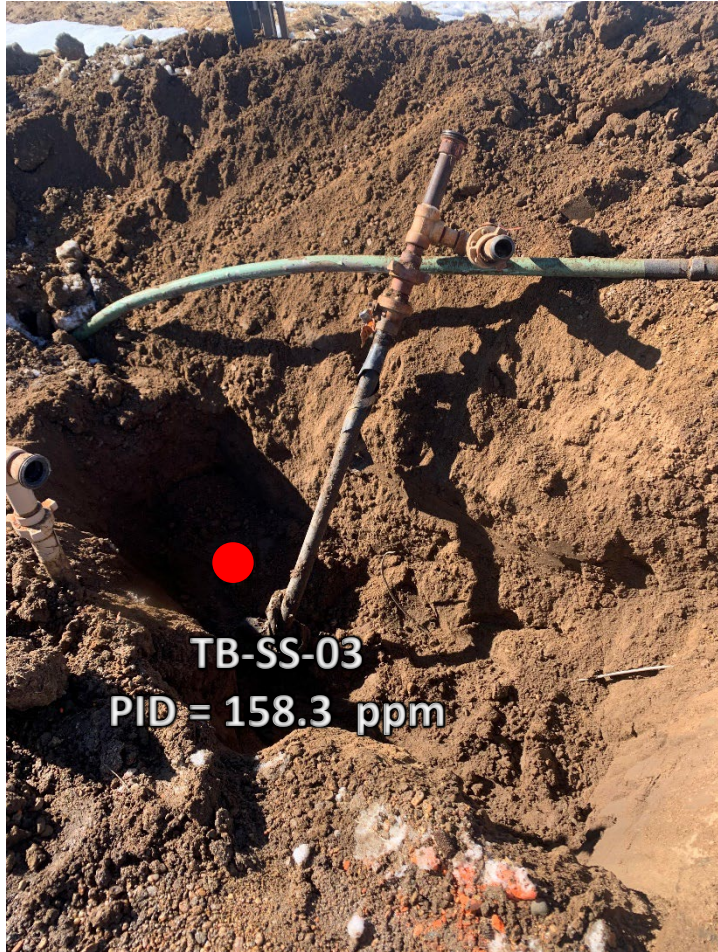
Tank Battery Decommissioning – 01/24/22



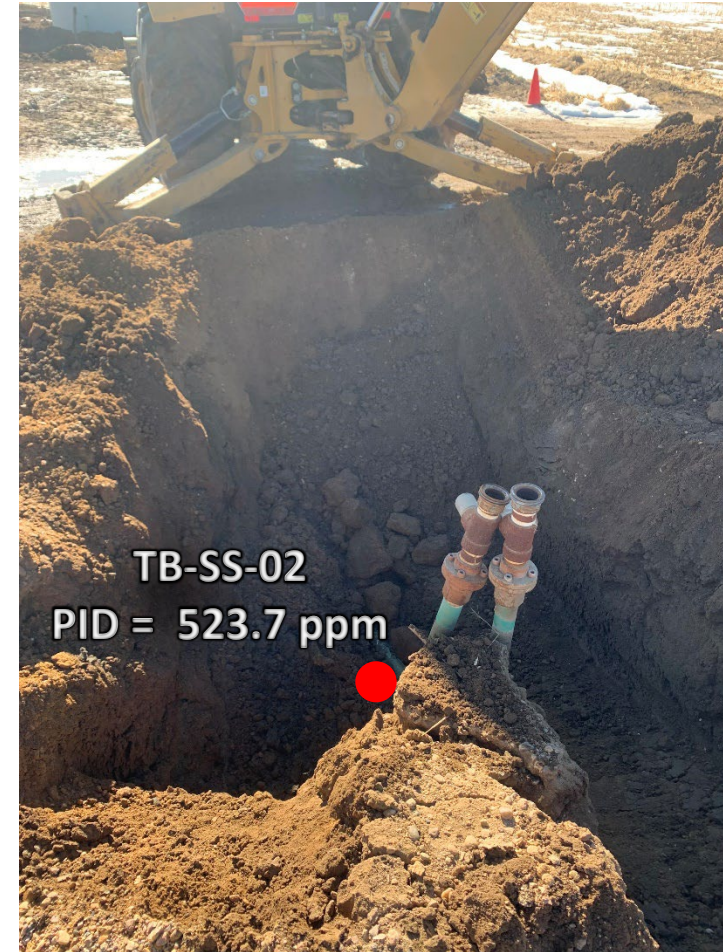
Tank connection location

No petroleum hydrocarbon staining or odor observed

Tank Battery Decommissioning – 01/24/22



Looking northwest at flowline to separator connection
Petroleum hydrocarbon odor observed, no staining observed



Looking south at dumpline to separator connection
Petroleum hydrocarbon odor observed, no staining observed

Tank Battery Decommissioning – 01/24/22



Looking west at meter house connection/manifold
No petroleum hydrocarbon odor or staining observed

Tank Battery Decommissioning – 01/24/22



Looking east

Former VOC burner location

No petroleum hydrocarbon staining or odor observed



ATTACHMENT B

Laboratory Analytical Reports



February 16, 2022

Eagle Environmental Consulting, Inc.

Martin C Eckert III

8000 W 44th Ave

Wheat Ridge CO 80033

Project Name - Noble - UPRC #27-9F Tank Battery Project Number - [none]

Attached are your analytical results for Noble - UPRC #27-9F Tank Battery received by Origins Laboratory, Inc. January 24, 2022. This project is associated with Origins project number Y201428-01.

The analytical results in the following report were analyzed under the guidelines of EPA Methods. These methods are identified as follows; "SW" are defined in SW-846, "EPA" are defined in 40CFR part 136 and "SM" are defined in the most current revision of Standard Methods For the Examination of Water and Wastewater.

The analytical results apply specifically to the samples and analyses specified per the attached Chain of Custody. As such, this report shall not be reproduced except in full, without the written approval of Origin's laboratory.

Unless otherwise noted, the analytical results for all soil samples are reported on a wet weight basis. All analytical analyses were performed under NELAP guidelines unless noted by a data qualifier.

Any holding time exceedances, deviations from the method specifications or deviations from Origins Laboratory's Standard Operating Procedures are outlined in the case narrative.

Thank you for selecting Origins for your analytical needs. Please contact us with any questions concerning this report, or if we can help with anything at all.

Origins Laboratory, Inc.
303.433.1322
o-squad@oelabinc.com



1725 Elk Place, Denver, CO 80211 | Phone: 303.433.1322 | Fax: 303.265.9645

Eagle Environmental Consulting, Inc.

8000 W 44th Ave

Wheat Ridge CO 80033

Martin C Eckert III

Project Number: [none]

Project: Noble - UPRC #27-9F Tank Battery

CROSS REFERENCE REPORT

Sample ID	Laboratory ID	Matrix	Date Sampled	Date Received
WV-SS-01@3'	Y201428-01	Soil	January 24, 2022 11:38	01/24/2022 16:26
WV-SS-02@3'	Y201428-02	Soil	January 24, 2022 11:39	01/24/2022 16:26
WV-SS-03@3'	Y201428-03	Soil	January 24, 2022 11:40	01/24/2022 16:26
WV-SS-04@3'	Y201428-04	Soil	January 24, 2022 11:41	01/24/2022 16:26
WV-FS-01@4'	Y201428-05	Soil	January 24, 2022 11:42	01/24/2022 16:26
TB-SS-01@0.5'	Y201428-06	Soil	January 24, 2022 11:54	01/24/2022 16:26
TB-SS-02@3'	Y201428-07	Soil	January 24, 2022 11:45	01/24/2022 16:26
TB-SS-03@3'	Y201428-08	Soil	January 24, 2022 11:48	01/24/2022 16:26

Origins Laboratory, Inc.



Jen Pellegrini, Project Manager

The results in this report apply to the samples analyzed in accordance with the chain of custody document. This analytical report must be reproduced in its entirety.

Eagle Environmental Consulting, Inc.
8000 W 44th Ave
Wheat Ridge CO 80033

Martin C Eckert III
Project Number: [none]
Project: Noble - UPRC #27-9F Tank Battery

Origins Laboratory

F-012207-01-R1
Effective Date: 01/09/12

Sample Receipt Checklist

Origins Work Order: 120142X

Client: Eagle

Client Project ID: UPRC #27-9F

Checklist Completed by: JEH

Shipped Via: HD

(UPS, FedEx, Hand Delivered, Pick-up, etc.)

Date/time completed: 1/24/12

Airbill #: NA

Matrix(s) Received: (Check all that apply): / Soil/Solid

/ Water

/ Other:

Cooler Number/Temperature: 1 149°C / °C / °C (Describe)

Thermometer ID: 1003

Requirement Description	Yes	No	N/A	Comments (if any)
If samples require cooling, was the temperature between 0°C to ≤ 6°C ⁽¹⁾ ?	<u>—</u>			
Is there ice present (document if blue ice is used)	<u>—</u>			
Are custody seals present on cooler? (if so, document in comments if they are signed and dated, broken or intact)		<u>—</u>		
Are custody seals present on each sample container? (if so, document in comments if they are signed and dated, broken or intact)		<u>—</u>		
Were all samples received intact ⁽¹⁾ ?	<u>—</u>			
Was adequate sample volume provided ⁽¹⁾ ?	<u>—</u>			
Are short holding time analytes or samples with HTs due within 48 hours present ⁽¹⁾ ?		<u>—</u>		
Is a chain-of-custody (COC) present and filled out completely ⁽¹⁾ ?	<u>—</u>			
Does the COC agree with the number and type of sample bottles received ⁽¹⁾ ?	<u>—</u>			
Do the sample IDs on the bottle labels match the COC ⁽¹⁾ ?	<u>—</u>			
Is the COC properly relinquished by the client with date and time recorded ⁽¹⁾ ?	<u>—</u>			
For volatiles in water – is there headspace (> ¼ inch bubble) present? If yes, contact client and note in narrative.			<u>—</u>	
Are samples preserved that require preservation and was it checked ⁽¹⁾ ? (note ID of confirmation instrument used in comments) / (preservation is not confirmed for subcontracted analyses in order to insure sample integrity)/(pH <2 for samples preserved with HNO ₃ , HCL, H ₂ SO ₄) / (pH >10 for samples preserved with NaAsO ₂ +NaOH, ZnAc+NaOH)			<u>—</u>	
Additional Comments (if any):				

⁽¹⁾ If NO, then contact the client before proceeding with analysis and note date/time and person contacted as well as the corrective action to in the additional comments (above) and the case narrative.

Reviewed by (Project Manager) JEH

Date/Time Reviewed 1-25-12

Origins Laboratory, Inc.

Jen Pellegrini

Jen Pellegrini, Project Manager

The results in this report apply to the samples analyzed in accordance with the chain of custody document. This analytical report must be reproduced in its entirety.

Eagle Environmental Consulting, Inc.
8000 W 44th Ave
Wheat Ridge CO 80033

Martin C Eckert III
Project Number: [none]
Project: Noble - UPRC #27-9F Tank Battery

WV-SS-01@3'

1/24/2022 11:38:00AM

Analyte	Result	Min Detection Limit	Reporting Limit	Units	Dilution	Batch	Prepared	Analyzed	Notes
---------	--------	---------------------	-----------------	-------	----------	-------	----------	----------	-------

Origins Laboratory, Inc.
Y201428-01 (Soil)

Boron (DTPA Sorbitol)

Boron	0.339	0.200	mg/L	1	B2A2504	01/25/2022	01/26/2022	
-------	-------	-------	------	---	---------	------------	------------	--

DRO/ORO by EPA 8015D

Diesel (C10-C28)	ND	25.0	mg/kg	1	B2A2501	01/25/2022	01/28/2022	U
Residual Range Organics (C28-C40)	ND	100	"	"	"	"	"	U

Surrogate: o-Terphenyl	92.6 %	50-150			"	"	"	
------------------------	--------	--------	--	--	---	---	---	--

GBTEX+TMBs by 8260D

1,2,4-Trimethylbenzene	0.0438	0.00200	mg/kg	1	B2A2625	01/26/2022	02/03/2022	
1,3,5-Trimethylbenzene	0.0194	0.00200	"	"	"	"	"	
Benzene	ND	0.00200	"	"	"	"	"	U
Ethylbenzene	ND	0.00200	"	"	"	"	"	U
Toluene	ND	0.00200	"	"	"	"	"	U
Xylenes, total	ND	0.00200	"	"	"	"	"	U
Gasoline Range Hydrocarbons	0.341	0.200	"	"	"	"	"	

Surrogate: 1,2-Dichloroethane-d4	102 %	70-130			"	"	"	
Surrogate: Toluene-d8	98.9 %	70-130			"	"	"	

Origins Laboratory, Inc.



Jen Pellegrini, Project Manager

The results in this report apply to the samples analyzed in accordance with the chain of custody document. This analytical report must be reproduced in its entirety.

Eagle Environmental Consulting, Inc.
8000 W 44th Ave
Wheat Ridge CO 80033

Martin C Eckert III
Project Number: [none]
Project: Noble - UPRC #27-9F Tank Battery

WV-SS-01@3'

1/24/2022 11:38:00AM

Analyte	Result	Min Detection Limit	Reporting Limit	Units	Dilution	Batch	Prepared	Analyzed	Notes
---------	--------	---------------------	-----------------	-------	----------	-------	----------	----------	-------

Origins Laboratory, Inc.
Y201428-01 (Soil)

GBTEX+TMBs by 8260D

Surrogate: 4-Bromofluorobenzene 101 % 70-130 B2A26 25 01/26/2022 02/03/2022

Metals by Saturated Paste by EPA 6010

Calcium	ND	0.499	meq/L	10	[CALC]	01/25/2022	01/26/2022
Magnesium	ND	0.823	"	"	"	"	"
Sodium	5.01	0.435	"	"	"	"	"

PAH by 8270D SIM

1-Methylnaphthalene	0.0051	0.000364	0.00067	mg/Kg	1	L596796	01/28/2022	01/31/2022
2-Methylnaphthalene	0.0139	0.000645	0.00067	"	"	"	"	"
Acenaphthene	ND	0.000304	0.00067	"	"	"	"	"
Anthracene	ND	0.000334	0.00067	"	"	"	"	"
Benzo(a)anthracene	ND	0.000493	0.00067	"	"	"	"	"
Benzo(a)pyrene	0.000643	0.000468	0.00067	"	"	"	"	" J
Benzo(b)fluoranthene	0.000816	0.000585	0.00067	"	"	"	"	"
Benzo(k)fluoranthene	ND	0.000437	0.00067	"	"	"	"	"
Chrysene	0.000647	0.000624	0.00067	"	"	"	"	" J
Dibenz(a,h)anthracene	ND	0.000614	0.00067	"	"	"	"	"
Fluoranthene	0.000794	0.000394	0.00067	"	"	"	"	"
Fluorene	ND	0.000286	0.00067	"	"	"	"	"

Origins Laboratory, Inc.



Jen Pellegrini, Project Manager

The results in this report apply to the samples analyzed in accordance with the chain of custody document. This analytical report must be reproduced in its entirety.

Eagle Environmental Consulting, Inc.
8000 W 44th Ave
Wheat Ridge CO 80033

Martin C Eckert III
Project Number: [none]
Project: Noble - UPRC #27-9F Tank Battery

WV-SS-01@3'

1/24/2022 11:38:00AM

Analyte	Result	Min Detection Limit	Reporting Limit	Units	Dilution	Batch	Prepared	Analyzed	Notes
---------	--------	---------------------	-----------------	-------	----------	-------	----------	----------	-------

Waypoint Analytical, Inc.
Y201428-01 (Soil)

PAH by 8270D SIM

Indeno(1,2,3-cd)pyrene	ND	0.000627	0.00067	mg/Kg	1	L596796	01/28/2022	01/31/2022
Naphthalene	0.00609	0.000484	0.00067	"	"	"	"	"
Pyrene	0.000892	0.000643	0.00067	"	"	"	"	"

Surrogate: 2-Fluorobiphenyl	58.4 %		33-115			"	"	"
Surrogate: 4-Terphenyl-d14	67.2 %		33-122			"	"	"
Surrogate: Nitrobenzene-d5	56.9 %		29-110			"	"	"

pH in Soil by 9045D

pH	7.93			pH Units	1	B2A2505	01/25/2022	01/26/2022
----	------	--	--	----------	---	---------	------------	------------

SAR by 20B Saturated Paste

SAR	10.2			SAR	1	B2A2503	01/25/2022	01/26/2022
-----	------	--	--	-----	---	---------	------------	------------

Specific Conductance Mod. 9050A

Specific Conductance (EC)	0.432		0.00500	mmhos/cm	1	B2A2506	01/25/2022	01/26/2022
---------------------------	-------	--	---------	----------	---	---------	------------	------------

Origins Laboratory, Inc.



The results in this report apply to the samples analyzed in accordance with the chain of custody document. This analytical report must be reproduced in its entirety.

Jen Pellegrini, Project Manager

Eagle Environmental Consulting, Inc.
8000 W 44th Ave
Wheat Ridge CO 80033

Martin C Eckert III
Project Number: [none]
Project: Noble - UPRC #27-9F Tank Battery

WV-SS-02@3'

1/24/2022 11:39:00AM

Analyte	Result	Min Detection Limit	Reporting Limit	Units	Dilution	Batch	Prepared	Analyzed	Notes
---------	--------	---------------------	-----------------	-------	----------	-------	----------	----------	-------

Origins Laboratory, Inc.
Y201428-02 (Soil)

Boron (DTPA Sorbitol)

Boron	0.417	0.199	mg/L	1	B2A2504	01/25/2022	01/26/2022
-------	-------	-------	------	---	---------	------------	------------

DRO/ORO by EPA 8015D

Diesel (C10-C28)	568	25.0	mg/kg	1	B2A2501	01/25/2022	01/28/2022
Residual Range Organics (C28-C40)	379	100	"	"	"	"	"

Surrogate: o-Terphenyl	117 %	50-150	"	"	"
------------------------	-------	--------	---	---	---

GBTEX+TMBs by 8260D

1,2,4-Trimethylbenzene	0.0438	0.00200	mg/kg	1	B2A2625	01/26/2022	02/03/2022
1,3,5-Trimethylbenzene	0.0348	0.00200	"	"	"	"	"
Benzene	ND	0.00200	"	"	"	"	U
Ethylbenzene	0.00486	0.00200	"	"	"	"	"
Toluene	0.00480	0.00200	"	"	"	"	"
Xylenes, total	ND	0.00200	"	"	"	"	U
Gasoline Range Hydrocarbons	2.71	0.200	"	"	"	"	"

Surrogate: 1,2-Dichloroethane-d4	104 %	70-130	"	"	"
Surrogate: Toluene-d8	98.9 %	70-130	"	"	"
Surrogate: 4-Bromofluorobenzene	106 %	70-130	"	"	"

Origins Laboratory, Inc.



The results in this report apply to the samples analyzed in accordance with the chain of custody document. This analytical report must be reproduced in its entirety.

Jen Pellegrini, Project Manager

Eagle Environmental Consulting, Inc.
8000 W 44th Ave
Wheat Ridge CO 80033

Martin C Eckert III
Project Number: [none]
Project: Noble - UPRC #27-9F Tank Battery

WV-SS-02@3'

1/24/2022 11:39:00AM

Analyte	Result	Min Detection Limit	Reporting Limit	Units	Dilution	Batch	Prepared	Analyzed	Notes
---------	--------	---------------------	-----------------	-------	----------	-------	----------	----------	-------

Origins Laboratory, Inc.
Y201428-02 (Soil)

Metals by Saturated Paste by EPA 6010

Calcium	1.78	0.499	meq/L	10	[CALC]	01/25/2022	01/26/2022
Magnesium	ND	0.823	"	"	"	"	"
Sodium	1.64	0.435	"	"	"	"	"

PAH by 8270D-SIM

1-Methylnaphthalene	0.0244	0.00182	0.00335	mg/Kg	5	L597182	01/31/2022	02/01/2022
2-Methylnaphthalene	0.0405	0.00323	0.00335	"	"	"	"	"
Acenaphthene	0.0281	0.00152	0.00335	"	"	"	"	"
Anthracene	0.00418	0.00167	0.00335	"	"	"	"	"
Benzo(a)anthracene	0.00537	0.00247	0.00335	"	"	"	"	"
Benzo(a)pyrene	0.0072	0.00234	0.00335	"	"	"	"	"
Benzo(b)fluoranthene	ND	0.00293	0.00335	"	"	"	"	"
Benzo(k)fluoranthene	ND	0.00219	0.00335	"	"	"	"	"
Chrysene	0.0164	0.00312	0.00335	"	"	"	"	"
Dibenz(a,h)anthracene	ND	0.00307	0.00335	"	"	"	"	"
Fluoranthene	0.00716	0.00197	0.00335	"	"	"	"	"
Fluorene	0.0615	0.00143	0.00335	"	"	"	"	"
Indeno(1,2,3-cd)pyrene	ND	0.00314	0.00335	"	"	"	"	"
Naphthalene	0.00594	0.00242	0.00335	"	"	"	"	"
Pyrene	0.0202	0.00322	0.00335	"	"	"	"	"
Surrogate: 2-Fluorobiphenyl	61.1 %		33-115			"	"	"
Surrogate: 4-Terphenyl-d14	59.9 %		33-122			"	"	"

Origins Laboratory, Inc.



Jen Pellegrini, Project Manager

The results in this report apply to the samples analyzed in accordance with the chain of custody document. This analytical report must be reproduced in its entirety.

Eagle Environmental Consulting, Inc.
8000 W 44th Ave
Wheat Ridge CO 80033

Martin C Eckert III
Project Number: [none]
Project: Noble - UPRC #27-9F Tank Battery

WV-SS-02@3'

1/24/2022 11:39:00AM

Analyte	Result	Min Detection Limit	Reporting Limit	Units	Dilution	Batch	Prepared	Analyzed	Notes
---------	--------	---------------------	-----------------	-------	----------	-------	----------	----------	-------

Waypoint Analytical, Inc.
Y201428-02 (Soil)

PAH by 8270D-SIM

Surrogate: Nitrobenzene-d5	57.2 %	29-110	L5971 82	01/31/2022	02/01/2022
----------------------------	--------	--------	-------------	------------	------------

pH in Soil by 9045D

pH	11.5	pH Units	1	B2A2505	01/25/2022	01/26/2022
----	------	----------	---	---------	------------	------------

SAR by 20B Saturated Paste

SAR	1.50	SAR	1	B2A2503	01/25/2022	01/26/2022
-----	------	-----	---	---------	------------	------------

Specific Conductance Mod. 9050A

Specific Conductance (EC)	0.894	0.00500	mmhos/cm	1	B2A2506	01/25/2022	01/26/2022
---------------------------	-------	---------	----------	---	---------	------------	------------

Total Metals by 6020B

Arsenic	3.07	0.0855	0.25	mg/Kg	5	L598376	02/09/2022	02/13/2022	
Barium	46.3	0.042	0.25	"	"	"	"	"	
Cadmium	0.193	0.0259	0.25	"	"	"	"	"	J
Copper	8.39	0.0806	0.25	"	"	"	"	"	
Lead	7.35	0.031	0.25	"	"	"	"	"	
Nickel	6.4	0.0633	0.25	"	"	"	"	"	
Selenium	ND	0.103	0.25	"	"	"	"	"	
Silver	0.0321	0.0067	0.25	"	"	"	"	"	J
Zinc	27.6	0.534	2.5	"	"	"	"	"	

Origins Laboratory, Inc.



Jen Pellegrini, Project Manager

The results in this report apply to the samples analyzed in accordance with the chain of custody document. This analytical report must be reproduced in its entirety.

Eagle Environmental Consulting, Inc.
8000 W 44th Ave
Wheat Ridge CO 80033

Martin C Eckert III
Project Number: [none]
Project: Noble - UPRC #27-9F Tank Battery

WV-SS-02@3'

1/24/2022 11:39:00AM

Analyte	Result	Min Detection Limit	Reporting Limit	Units	Dilution	Batch	Prepared	Analyzed	Notes
---------	--------	------------------------	--------------------	-------	----------	-------	----------	----------	-------

Waypoint Analytical, LLC.
Y201428-02 (Soil)

Total Metals by 7196A

Chromium, Hexavalent	ND	0.502	1.03	mg/Kg	1	L599558	01/24/2022	02/15/2022
----------------------	----	-------	------	-------	---	---------	------------	------------

Origins Laboratory, Inc.



Jen Pellegrini, Project Manager

The results in this report apply to the samples analyzed in accordance with the chain of custody document. This analytical report must be reproduced in its entirety.

Eagle Environmental Consulting, Inc.
8000 W 44th Ave
Wheat Ridge CO 80033

Martin C Eckert III
Project Number: [none]
Project: Noble - UPRC #27-9F Tank Battery

WV-SS-03@3'

1/24/2022 11:40:00AM

Analyte	Result	Min Detection Limit	Reporting Limit	Units	Dilution	Batch	Prepared	Analyzed	Notes
---------	--------	---------------------	-----------------	-------	----------	-------	----------	----------	-------

Origins Laboratory, Inc.
Y201428-03 (Soil)

Boron (DTPA Sorbitol)

Boron	0.516	0.198	mg/L	1	B2A2504	01/25/2022	01/26/2022	
-------	-------	-------	------	---	---------	------------	------------	--

DRO/ORO by EPA 8015D

Diesel (C10-C28)	ND	25.0	mg/kg	1	B2A2501	01/25/2022	01/28/2022	U
Residual Range Organics (C28-C40)	ND	100	"	"	"	"	"	U

Surrogate: o-Terphenyl	109 %	50-150			"	"	"
------------------------	-------	--------	--	--	---	---	---

GBTEX+TMBs by 8260D

1,2,4-Trimethylbenzene	ND	0.00200	mg/kg	1	B2A2625	01/26/2022	02/04/2022	U
1,3,5-Trimethylbenzene	ND	0.00200	"	"	"	"	"	U
Benzene	ND	0.00200	"	"	"	"	"	U
Ethylbenzene	ND	0.00200	"	"	"	"	"	U
Toluene	ND	0.00200	"	"	"	"	"	U
Xylenes, total	ND	0.00200	"	"	"	"	"	U
Gasoline Range Hydrocarbons	ND	0.200	"	"	"	"	"	U

Surrogate: 1,2-Dichloroethane-d4	102 %	70-130			"	"	"
----------------------------------	-------	--------	--	--	---	---	---

Origins Laboratory, Inc.



The results in this report apply to the samples analyzed in accordance with the chain of custody document. This analytical report must be reproduced in its entirety.

Jen Pellegrini, Project Manager

Eagle Environmental Consulting, Inc.
8000 W 44th Ave
Wheat Ridge CO 80033

Martin C Eckert III
Project Number: [none]
Project: Noble - UPRC #27-9F Tank Battery

WV-SS-03@3'

1/24/2022 11:40:00AM

Analyte	Result	Min Detection Limit	Reporting Limit	Units	Dilution	Batch	Prepared	Analyzed	Notes
---------	--------	---------------------	-----------------	-------	----------	-------	----------	----------	-------

Origins Laboratory, Inc.
Y201428-03 (Soil)

GBTEX+TMBs by 8260D

Surrogate: Toluene-d8	107 %	70-130	B2A26 25	01/26/2022	02/04/2022
Surrogate: 4-Bromofluorobenzene	103 %	70-130	"	"	"

Metals by Saturated Paste by EPA 6010

Calcium	4.35	0.499	meq/L	10	[CALC]	01/25/2022	01/26/2022
Magnesium	ND	0.823	"	"	"	"	"
Sodium	1.71	0.435	"	"	"	"	"

PAH by 8270D-SIM

1-Methylnaphthalene	ND	0.000364	0.00067	mg/Kg	1	L597182	01/31/2022	02/01/2022
2-Methylnaphthalene	ND	0.000645	0.00067	"	"	"	"	"
Acenaphthene	ND	0.000304	0.00067	"	"	"	"	"
Anthracene	ND	0.000334	0.00067	"	"	"	"	"
Benzo(a)anthracene	0.00149	0.000493	0.00067	"	"	"	"	"
Benzo(a)pyrene	0.00236	0.000468	0.00067	"	"	"	"	"
Benzo(b)fluoranthene	0.00249	0.000585	0.00067	"	"	"	"	"
Benzo(k)fluoranthene	0.000733	0.000437	0.00067	"	"	"	"	"
Chrysene	0.00179	0.000624	0.00067	"	"	"	"	"
Dibenz(a,h)anthracene	ND	0.000614	0.00067	"	"	"	"	"
Fluoranthene	0.00227	0.000394	0.00067	"	"	"	"	"
Fluorene	ND	0.000286	0.00067	"	"	"	"	"

Origins Laboratory, Inc.



Jen Pellegrini, Project Manager

The results in this report apply to the samples analyzed in accordance with the chain of custody document. This analytical report must be reproduced in its entirety.

Eagle Environmental Consulting, Inc.
8000 W 44th Ave
Wheat Ridge CO 80033

Martin C Eckert III
Project Number: [none]
Project: Noble - UPRC #27-9F Tank Battery

WV-SS-03@3'

1/24/2022 11:40:00AM

Analyte	Result	Min Detection Limit	Reporting Limit	Units	Dilution	Batch	Prepared	Analyzed	Notes
---------	--------	---------------------	-----------------	-------	----------	-------	----------	----------	-------

Waypoint Analytical, Inc.
Y201428-03 (Soil)

PAH by 8270D-SIM

Indeno(1,2,3-cd)pyrene	0.00135	0.000627	0.00067	mg/Kg	1	L597182	01/31/2022	02/01/2022	
Naphthalene	ND	0.000484	0.00067	"	"	"	"	"	
Pyrene	0.00288	0.000643	0.00067	"	"	"	"	"	

Surrogate: 2-Fluorobiphenyl	55.5 %		33-115			"	"	"	
Surrogate: 4-Terphenyl-d14	65.8 %		33-122			"	"	"	
Surrogate: Nitrobenzene-d5	58.5 %		29-110			"	"	"	

pH in Soil by 9045D

pH	7.69			pH Units	1	B2A2505	01/25/2022	01/26/2022	
----	------	--	--	----------	---	---------	------------	------------	--

SAR by 20B Saturated Paste

SAR	1.15			SAR	1	B2A2503	01/25/2022	01/26/2022	
-----	------	--	--	-----	---	---------	------------	------------	--

Specific Conductance Mod. 9050A

Specific Conductance (EC)	0.702		0.00500	mmhos/cm	1	B2A2506	01/25/2022	01/26/2022	
---------------------------	-------	--	---------	----------	---	---------	------------	------------	--

Origins Laboratory, Inc.



The results in this report apply to the samples analyzed in accordance with the chain of custody document. This analytical report must be reproduced in its entirety.

Jen Pellegrini, Project Manager

Eagle Environmental Consulting, Inc.
8000 W 44th Ave
Wheat Ridge CO 80033

Martin C Eckert III
Project Number: [none]
Project: Noble - UPRC #27-9F Tank Battery

WV-SS-04@3'

1/24/2022 11:41:00AM

Analyte	Result	Min Detection Limit	Reporting Limit	Units	Dilution	Batch	Prepared	Analyzed	Notes
---------	--------	---------------------	-----------------	-------	----------	-------	----------	----------	-------

Origins Laboratory, Inc.
Y201428-04 (Soil)

Boron (DTPA Sorbitol)

Boron	0.300	0.200	mg/L	1	B2A2504	01/25/2022	01/26/2022	
-------	-------	-------	------	---	---------	------------	------------	--

DRO/ORO by EPA 8015D

Diesel (C10-C28)	ND	25.0	mg/kg	1	B2A2501	01/25/2022	01/28/2022	U
Residual Range Organics (C28-C40)	ND	100	"	"	"	"	"	U

Surrogate: o-Terphenyl	106 %	50-150			"	"	"
------------------------	-------	--------	--	--	---	---	---

GBTEX+TMBs by 8260D

1,2,4-Trimethylbenzene	ND	0.00200	mg/kg	1	B2A2625	01/26/2022	02/03/2022	U
1,3,5-Trimethylbenzene	ND	0.00200	"	"	"	"	"	U
Benzene	ND	0.00200	"	"	"	"	"	U
Ethylbenzene	ND	0.00200	"	"	"	"	"	U
Toluene	ND	0.00200	"	"	"	"	"	U
Xylenes, total	ND	0.00200	"	"	"	"	"	U
Gasoline Range Hydrocarbons	ND	0.200	"	"	"	"	"	U

Surrogate: 1,2-Dichloroethane-d4	102 %	70-130			"	"	"
----------------------------------	-------	--------	--	--	---	---	---

Origins Laboratory, Inc.



The results in this report apply to the samples analyzed in accordance with the chain of custody document. This analytical report must be reproduced in its entirety.

Jen Pellegrini, Project Manager

Eagle Environmental Consulting, Inc.
8000 W 44th Ave
Wheat Ridge CO 80033

Martin C Eckert III
Project Number: [none]
Project: Noble - UPRC #27-9F Tank Battery

WV-SS-04@3'

1/24/2022 11:41:00AM

Analyte	Result	Min Detection Limit	Reporting Limit	Units	Dilution	Batch	Prepared	Analyzed	Notes
---------	--------	---------------------	-----------------	-------	----------	-------	----------	----------	-------

Origins Laboratory, Inc.
Y201428-04 (Soil)

GBTEX+TMBs by 8260D

Surrogate: Toluene-d8	98.5 %	70-130	B2A26 25	01/26/2022	02/03/2022
Surrogate: 4-Bromofluorobenzene	97.4 %	70-130	"	"	"

Metals by Saturated Paste by EPA 6010

Calcium	2.52	0.499	meq/L	10	[CALC]	01/25/2022	01/26/2022
Magnesium	1.05	0.823	"	"	"	"	"
Sodium	2.48	0.435	"	"	"	"	"

PAH by 8270D-SIM

1-Methylnaphthalene	0.00642	0.000364	0.00067	mg/Kg	1	L597182	01/31/2022	02/01/2022
2-Methylnaphthalene	0.0141	0.000645	0.00067	"	"	"	"	"
Acenaphthene	0.000374	0.000304	0.00067	"	"	"	"	J
Anthracene	ND	0.000334	0.00067	"	"	"	"	"
Benzo(a)anthracene	ND	0.000493	0.00067	"	"	"	"	"
Benzo(a)pyrene	ND	0.000468	0.00067	"	"	"	"	"
Benzo(b)fluoranthene	0.00117	0.000585	0.00067	"	"	"	"	"
Benzo(k)fluoranthene	ND	0.000437	0.00067	"	"	"	"	"
Chrysene	0.000765	0.000624	0.00067	"	"	"	"	"
Dibenz(a,h)anthracene	ND	0.000614	0.00067	"	"	"	"	"
Fluoranthene	0.000614	0.000394	0.00067	"	"	"	"	J
Fluorene	0.000713	0.000286	0.00067	"	"	"	"	"

Origins Laboratory, Inc.



Jen Pellegrini, Project Manager

The results in this report apply to the samples analyzed in accordance with the chain of custody document. This analytical report must be reproduced in its entirety.

Eagle Environmental Consulting, Inc.
8000 W 44th Ave
Wheat Ridge CO 80033

Martin C Eckert III
Project Number: [none]
Project: Noble - UPRC #27-9F Tank Battery

WV-SS-04@3'

1/24/2022 11:41:00AM

Analyte	Result	Min Detection Limit	Reporting Limit	Units	Dilution	Batch	Prepared	Analyzed	Notes
---------	--------	---------------------	-----------------	-------	----------	-------	----------	----------	-------

Waypoint Analytical, Inc.
Y201428-04 (Soil)

PAH by 8270D-SIM

Indeno(1,2,3-cd)pyrene	0.000716	0.000627	0.00067	mg/Kg	1	L597182	01/31/2022	02/01/2022
Naphthalene	0.00661	0.000484	0.00067	"	"	"	"	"
Pyrene	0.00123	0.000643	0.00067	"	"	"	"	"

Surrogate: 2-Fluorobiphenyl	61.1 %	33-115	"	"	"
Surrogate: 4-Terphenyl-d14	75.1 %	33-122	"	"	"
Surrogate: Nitrobenzene-d5	61.1 %	29-110	"	"	"

pH in Soil by 9045D

pH	7.55	pH Units	1	B2A2505	01/25/2022	01/26/2022
----	------	----------	---	---------	------------	------------

SAR by 20B Saturated Paste

SAR	1.86	SAR	1	B2A2503	01/25/2022	01/26/2022
-----	------	-----	---	---------	------------	------------

Specific Conductance Mod. 9050A

Specific Conductance (EC)	0.708	0.00500	mmhos/cm	1	B2A2506	01/25/2022	01/26/2022
---------------------------	-------	---------	----------	---	---------	------------	------------

Origins Laboratory, Inc.



The results in this report apply to the samples analyzed in accordance with the chain of custody document. This analytical report must be reproduced in its entirety.

Jen Pellegrini, Project Manager

Eagle Environmental Consulting, Inc.
8000 W 44th Ave
Wheat Ridge CO 80033

Martin C Eckert III
Project Number: [none]
Project: Noble - UPRC #27-9F Tank Battery

WV-FS-01@4'

1/24/2022 11:42:00AM

Analyte	Result	Min Detection Limit	Reporting Limit	Units	Dilution	Batch	Prepared	Analyzed	Notes
---------	--------	---------------------	-----------------	-------	----------	-------	----------	----------	-------

Origins Laboratory, Inc.
Y201428-05 (Soil)

Boron (DTPA Sorbitol)

Boron	0.239	0.199	mg/L	1	B2A2504	01/25/2022	01/26/2022	
-------	-------	-------	------	---	---------	------------	------------	--

DRO/ORO by EPA 8015D

Diesel (C10-C28)	107	25.0	mg/kg	1	B2A2501	01/25/2022	01/28/2022	
Residual Range Organics (C28-C40)	ND	100	"	"	"	"	"	U

Surrogate: o-Terphenyl	92.8 %	50-150			"	"	"	
------------------------	--------	--------	--	--	---	---	---	--

GBTEX+TMBs by 8260D

1,2,4-Trimethylbenzene	0.151	0.0500	mg/kg	25	B2A2625	01/26/2022	02/03/2022	
1,3,5-Trimethylbenzene	0.122	0.0500	"	"	"	"	"	
Benzene	ND	0.00200	"	1	"	"	02/04/2022	U
Ethylbenzene	ND	0.00200	"	"	"	"	"	U
Toluene	ND	0.00200	"	"	"	"	"	U
Xylenes, total	ND	0.00200	"	"	"	"	"	U
Gasoline Range Hydrocarbons	2.54	0.200	"	"	"	"	"	

Surrogate: 1,2-Dichloroethane-d4	105 %	70-130			"	"	"	
Surrogate: Toluene-d8	108 %	70-130			"	"	"	

Origins Laboratory, Inc.



Jen Pellegrini, Project Manager

The results in this report apply to the samples analyzed in accordance with the chain of custody document. This analytical report must be reproduced in its entirety.

Eagle Environmental Consulting, Inc.
8000 W 44th Ave
Wheat Ridge CO 80033

Martin C Eckert III
Project Number: [none]
Project: Noble - UPRC #27-9F Tank Battery

WV-FS-01@4'

1/24/2022 11:42:00AM

Analyte	Result	Min Detection Limit	Reporting Limit	Units	Dilution	Batch	Prepared	Analyzed	Notes
---------	--------	---------------------	-----------------	-------	----------	-------	----------	----------	-------

Origins Laboratory, Inc.
Y201428-05 (Soil)

GBTEX+TMBs by 8260D

Surrogate: 4-Bromofluorobenzene 108 % 70-130 B2A26 25 01/26/2022 02/04/2022

Metals by Saturated Paste by EPA 6010

Calcium	3.81	0.499	meq/L	10	[CALC]	01/25/2022	01/26/2022
Magnesium	1.13	0.823	"	"	"	"	"
Sodium	2.12	0.435	"	"	"	"	"

PAH by 8270D-SIM

1-Methylnaphthalene	0.0211	0.000364	0.00067	mg/Kg	1	L597182	01/31/2022	02/01/2022
2-Methylnaphthalene	0.038	0.000645	0.00067	"	"	"	"	"
Acenaphthene	0.0123	0.000304	0.00067	"	"	"	"	"
Anthracene	ND	0.000334	0.00067	"	"	"	"	"
Benzo(a)anthracene	0.00236	0.000493	0.00067	"	"	"	"	"
Benzo(a)pyrene	0.00254	0.000468	0.00067	"	"	"	"	"
Benzo(b)fluoranthene	0.00131	0.000585	0.00067	"	"	"	"	"
Benzo(k)fluoranthene	ND	0.000437	0.00067	"	"	"	"	"
Chrysene	0.00647	0.000624	0.00067	"	"	"	"	"
Dibenz(a,h)anthracene	ND	0.000614	0.00067	"	"	"	"	"
Fluoranthene	0.000938	0.000394	0.00067	"	"	"	"	"
Fluorene	0.0185	0.000286	0.00067	"	"	"	"	"
Indeno(1,2,3-cd)pyrene	0.00153	0.000627	0.00067	"	"	"	"	"

Origins Laboratory, Inc.



Jen Pellegrini, Project Manager

The results in this report apply to the samples analyzed in accordance with the chain of custody document. This analytical report must be reproduced in its entirety.

Eagle Environmental Consulting, Inc.
8000 W 44th Ave
Wheat Ridge CO 80033

Martin C Eckert III
Project Number: [none]
Project: Noble - UPRC #27-9F Tank Battery

WV-FS-01@4'

1/24/2022 11:42:00AM

Analyte	Result	Min Detection Limit	Reporting Limit	Units	Dilution	Batch	Prepared	Analyzed	Notes
---------	--------	---------------------	-----------------	-------	----------	-------	----------	----------	-------

Waypoint Analytical, Inc.
Y201428-05 (Soil)

PAH by 8270D-SIM

Naphthalene	0.00839	0.000484	0.00067	mg/Kg	1	L597182	01/31/2022	02/01/2022	
Pyrene	0.00745	0.000643	0.00067	"	"	"	"	"	

Surrogate: 2-Fluorobiphenyl	52.4 %		33-115			"	"	"	
Surrogate: 4-Terphenyl-d14	58.8 %		33-122			"	"	"	
Surrogate: Nitrobenzene-d5	59.1 %		29-110			"	"	"	

pH in Soil by 9045D

pH	9.85			pH Units	1	B2A2505	01/25/2022	01/26/2022	
----	------	--	--	----------	---	---------	------------	------------	--

SAR by 20B Saturated Paste

SAR	1.35			SAR	1	B2A2503	01/25/2022	01/26/2022	
-----	------	--	--	-----	---	---------	------------	------------	--

Specific Conductance Mod. 9050A

Specific Conductance (EC)	0.395		0.00500	mmhos/cm	1	B2A2506	01/25/2022	01/26/2022	
---------------------------	-------	--	---------	----------	---	---------	------------	------------	--

Origins Laboratory, Inc.



Jen Pellegrini, Project Manager

The results in this report apply to the samples analyzed in accordance with the chain of custody document. This analytical report must be reproduced in its entirety.

Eagle Environmental Consulting, Inc.
8000 W 44th Ave
Wheat Ridge CO 80033

Martin C Eckert III
Project Number: [none]
Project: Noble - UPRC #27-9F Tank Battery

TB-SS-01@0.5'
1/24/2022 11:54:00AM

Analyte	Result	Min Detection Limit	Reporting Limit	Units	Dilution	Batch	Prepared	Analyzed	Notes
---------	--------	---------------------	-----------------	-------	----------	-------	----------	----------	-------

Origins Laboratory, Inc.
Y201428-06 (Soil)

Boron (DTPA Sorbitol)

Boron	1.20	0.200	mg/L	1	B2A2504	01/25/2022	01/26/2022	
-------	------	-------	------	---	---------	------------	------------	--

DRO/ORO by EPA 8015D

Diesel (C10-C28)	ND	25.0	mg/kg	1	B2A2501	01/25/2022	01/28/2022	U
Residual Range Organics (C28-C40)	ND	100	"	"	"	"	"	U

Surrogate: o-Terphenyl	107 %	50-150			"	"	"	
------------------------	-------	--------	--	--	---	---	---	--

GBTEX+TMBs by 8260D

1,2,4-Trimethylbenzene	ND	0.00200	mg/kg	1	B2A2625	01/26/2022	02/03/2022	U
1,3,5-Trimethylbenzene	ND	0.00200	"	"	"	"	"	U
Benzene	ND	0.00200	"	"	"	"	"	U
Ethylbenzene	ND	0.00200	"	"	"	"	"	U
Toluene	ND	0.00200	"	"	"	"	"	U
Xylenes, total	ND	0.00200	"	"	"	"	"	U
Gasoline Range Hydrocarbons	ND	0.200	"	"	"	"	"	U

Surrogate: 1,2-Dichloroethane-d4	102 %	70-130			"	"	"	
----------------------------------	-------	--------	--	--	---	---	---	--

Origins Laboratory, Inc.



The results in this report apply to the samples analyzed in accordance with the chain of custody document. This analytical report must be reproduced in its entirety.

Jen Pellegrini, Project Manager

Eagle Environmental Consulting, Inc.
8000 W 44th Ave
Wheat Ridge CO 80033

Martin C Eckert III
Project Number: [none]
Project: Noble - UPRC #27-9F Tank Battery

TB-SS-01@0.5'

1/24/2022 11:54:00AM

Analyte	Result	Min Detection Limit	Reporting Limit	Units	Dilution	Batch	Prepared	Analyzed	Notes
---------	--------	---------------------	-----------------	-------	----------	-------	----------	----------	-------

Origins Laboratory, Inc.
Y201428-06 (Soil)

GBTEX+TMBs by 8260D

Surrogate: Toluene-d8	98.2 %	70-130	B2A26 25	01/26/2022	02/03/2022
Surrogate: 4-Bromofluorobenzene	97.9 %	70-130	"	"	"

Metals by Saturated Paste by EPA 6010

Calcium	1.94	0.499	meq/L	10	[CALC]	01/25/2022	01/26/2022
Magnesium	ND	0.823	"	"	"	"	"
Sodium	1.35	0.435	"	"	"	"	"

PAH by 8270D-SIM

1-Methylnaphthalene	ND	0.000364	0.00067	mg/Kg	1	L597182	01/31/2022	02/01/2022	
2-Methylnaphthalene	ND	0.000645	0.00067	"	"	"	"	"	
Acenaphthene	ND	0.000304	0.00067	"	"	"	"	"	
Anthracene	ND	0.000334	0.00067	"	"	"	"	"	
Benzo(a)anthracene	ND	0.000493	0.00067	"	"	"	"	"	
Benzo(a)pyrene	ND	0.000468	0.00067	"	"	"	"	"	
Benzo(b)fluoranthene	0.00087	0.000585	0.00067	"	"	"	"	"	
Benzo(k)fluoranthene	ND	0.000437	0.00067	"	"	"	"	"	
Chrysene	0.000631	0.000624	0.00067	"	"	"	"	"	J
Dibenz(a,h)anthracene	ND	0.000614	0.00067	"	"	"	"	"	
Fluoranthene	0.000594	0.000394	0.00067	"	"	"	"	"	J

Origins Laboratory, Inc.



Jen Pellegrini, Project Manager

The results in this report apply to the samples analyzed in accordance with the chain of custody document. This analytical report must be reproduced in its entirety.

Eagle Environmental Consulting, Inc.
8000 W 44th Ave
Wheat Ridge CO 80033

Martin C Eckert III
Project Number: [none]
Project: Noble - UPRC #27-9F Tank Battery

TB-SS-01@0.5'

1/24/2022 11:54:00AM

Analyte	Result	Min Detection Limit	Reporting Limit	Units	Dilution	Batch	Prepared	Analyzed	Notes
---------	--------	---------------------	-----------------	-------	----------	-------	----------	----------	-------

Waypoint Analytical, Inc.
Y201428-06 (Soil)

PAH by 8270D-SIM

Fluorene	ND	0.000286	0.00067	mg/Kg	1	L597182	01/31/2022	02/01/2022
Indeno(1,2,3-cd)pyrene	ND	0.000627	0.00067	"	"	"	"	"
Naphthalene	0.00101	0.000484	0.00067	"	"	"	"	"
Pyrene	0.000677	0.000643	0.00067	"	"	"	"	"

Surrogate: 2-Fluorobiphenyl	58.5 %		33-115			"	"	"
Surrogate: 4-Terphenyl-d14	68.2 %		33-122			"	"	"
Surrogate: Nitrobenzene-d5	58.8 %		29-110			"	"	"

pH in Soil by 9045D

pH	8.24			pH Units	1	B2A2505	01/25/2022	01/26/2022
----	------	--	--	----------	---	---------	------------	------------

SAR by 20B Saturated Paste

SAR	1.32			SAR	1	B2A2503	01/25/2022	01/26/2022
-----	------	--	--	-----	---	---------	------------	------------

Specific Conductance Mod. 9050A

Specific Conductance (EC)	2.14		0.00500	mmhos/cm	1	B2A2506	01/25/2022	01/26/2022
---------------------------	------	--	---------	----------	---	---------	------------	------------

Origins Laboratory, Inc.



Jen Pellegrini, Project Manager

The results in this report apply to the samples analyzed in accordance with the chain of custody document. This analytical report must be reproduced in its entirety.

Eagle Environmental Consulting, Inc.
8000 W 44th Ave
Wheat Ridge CO 80033

Martin C Eckert III
Project Number: [none]
Project: Noble - UPRC #27-9F Tank Battery

TB-SS-02@3'

1/24/2022 11:45:00AM

Analyte	Result	Min Detection Limit	Reporting Limit	Units	Dilution	Batch	Prepared	Analyzed	Notes
---------	--------	---------------------	-----------------	-------	----------	-------	----------	----------	-------

Origins Laboratory, Inc.
Y201428-07 (Soil)

Boron (DTPA Sorbitol)

Boron	ND	0.199	mg/L	1	B2A2504	01/25/2022	01/26/2022	U
-------	----	-------	------	---	---------	------------	------------	---

DRO/ORO by EPA 8015D

Diesel (C10-C28)	ND	25.0	mg/kg	1	B2A2501	01/25/2022	01/28/2022	U
Residual Range Organics (C28-C40)	ND	100	"	"	"	"	"	U

Surrogate: o-Terphenyl	109 %	50-150	"	"	"	"	"	"
------------------------	-------	--------	---	---	---	---	---	---

GBTEX+TMBs by 8260D

1,2,4-Trimethylbenzene	ND	0.00200	mg/kg	1	B2A2625	01/26/2022	02/03/2022	U
1,3,5-Trimethylbenzene	0.00754	0.00200	"	"	"	"	"	
Benzene	ND	0.00200	"	"	"	"	"	U
Ethylbenzene	ND	0.00200	"	"	"	"	"	U
Toluene	ND	0.00200	"	"	"	"	"	U
Xylenes, total	ND	0.00200	"	"	"	"	"	U
Gasoline Range Hydrocarbons	ND	0.200	"	"	"	"	"	U

Surrogate: 1,2-Dichloroethane-d4	100 %	70-130	"	"	"	"	"	"
----------------------------------	-------	--------	---	---	---	---	---	---

Origins Laboratory, Inc.



Jen Pellegrini, Project Manager

The results in this report apply to the samples analyzed in accordance with the chain of custody document. This analytical report must be reproduced in its entirety.

Eagle Environmental Consulting, Inc.
8000 W 44th Ave
Wheat Ridge CO 80033

Martin C Eckert III
Project Number: [none]
Project: Noble - UPRC #27-9F Tank Battery

TB-SS-02@3'

1/24/2022 11:45:00AM

Analyte	Result	Min Detection Limit	Reporting Limit	Units	Dilution	Batch	Prepared	Analyzed	Notes
---------	--------	---------------------	-----------------	-------	----------	-------	----------	----------	-------

Origins Laboratory, Inc.
Y201428-07 (Soil)

GBTEX+TMBs by 8260D

Surrogate: Toluene-d8	97.8 %	70-130	B2A26 25	01/26/2022	02/03/2022
Surrogate: 4-Bromofluorobenzene	98.1 %	70-130	"	"	"

Metals by Saturated Paste by EPA 6010

Calcium	8.06	0.499	meq/L	10	[CALC]	01/25/2022	01/26/2022
Magnesium	3.70	0.823	"	"	"	"	"
Sodium	8.43	0.435	"	"	"	"	"

PAH by 8270D-SIM

1-Methylnaphthalene	ND	0.000364	0.00067	mg/Kg	1	L597182	01/31/2022	02/01/2022
2-Methylnaphthalene	0.00073	0.000645	0.00067	"	"	"	"	"
Acenaphthene	ND	0.000304	0.00067	"	"	"	"	"
Anthracene	ND	0.000334	0.00067	"	"	"	"	"
Benzo(a)anthracene	0.000622	0.000493	0.00067	"	"	"	"	" J
Benzo(a)pyrene	ND	0.000468	0.00067	"	"	"	"	"
Benzo(b)fluoranthene	0.00143	0.000585	0.00067	"	"	"	"	"
Benzo(k)fluoranthene	0.000538	0.000437	0.00067	"	"	"	"	" J
Chrysene	0.000782	0.000624	0.00067	"	"	"	"	"
Dibenz(a,h)anthracene	ND	0.000614	0.00067	"	"	"	"	"
Fluoranthene	0.00062	0.000394	0.00067	"	"	"	"	" J
Fluorene	ND	0.000286	0.00067	"	"	"	"	"

Origins Laboratory, Inc.



Jen Pellegrini, Project Manager

The results in this report apply to the samples analyzed in accordance with the chain of custody document. This analytical report must be reproduced in its entirety.

Eagle Environmental Consulting, Inc.
8000 W 44th Ave
Wheat Ridge CO 80033

Martin C Eckert III
Project Number: [none]
Project: Noble - UPRC #27-9F Tank Battery

TB-SS-02@3'

1/24/2022 11:45:00AM

Analyte	Result	Min Detection Limit	Reporting Limit	Units	Dilution	Batch	Prepared	Analyzed	Notes
---------	--------	---------------------	-----------------	-------	----------	-------	----------	----------	-------

Waypoint Analytical, Inc.
Y201428-07 (Soil)

PAH by 8270D-SIM

Indeno(1,2,3-cd)pyrene	0.000641	0.000627	0.00067	mg/Kg	1	L597182	01/31/2022	02/01/2022	J
Naphthalene	ND	0.000484	0.00067	"	"	"	"	"	
Pyrene	0.00065	0.000643	0.00067	"	"	"	"	"	J

Surrogate: 2-Fluorobiphenyl	56.4 %	33-115	"	"	"
Surrogate: 4-Terphenyl-d14	69 %	33-122	"	"	"
Surrogate: Nitrobenzene-d5	56.7 %	29-110	"	"	"

pH in Soil by 9045D

pH	7.38	pH Units	1	B2A2505	01/25/2022	01/26/2022
----	------	----------	---	---------	------------	------------

SAR by 20B Saturated Paste

SAR	3.48	SAR	1	B2A2503	01/25/2022	01/26/2022
-----	------	-----	---	---------	------------	------------

Specific Conductance Mod. 9050A

Specific Conductance (EC)	0.363	0.00500	mmhos/cm	1	B2A2506	01/25/2022	01/26/2022
---------------------------	-------	---------	----------	---	---------	------------	------------

Total Metals by 6020B

Arsenic	1.2	0.0855	0.25	mg/Kg	5	L596447	01/26/2022	01/28/2022
Barium	56.5	0.042	0.25	"	"	"	"	"

Origins Laboratory, Inc.



Jen Pellegrini, Project Manager

The results in this report apply to the samples analyzed in accordance with the chain of custody document. This analytical report must be reproduced in its entirety.

Eagle Environmental Consulting, Inc.
8000 W 44th Ave
Wheat Ridge CO 80033

Martin C Eckert III
Project Number: [none]
Project: Noble - UPRC #27-9F Tank Battery

TB-SS-02@3'

1/24/2022 11:45:00AM

Analyte	Result	Min Detection Limit	Reporting Limit	Units	Dilution	Batch	Prepared	Analyzed	Notes
---------	--------	---------------------	-----------------	-------	----------	-------	----------	----------	-------

Waypoint Analytical, Inc.
Y201428-07 (Soil)

Total Metals by 6020B

Cadmium	0.125	0.0259	0.25	mg/Kg	5	L596447	01/26/2022	01/28/2022	J
Copper	5.7	0.0806	0.25	"	"	"	"	"	
Lead	6.16	0.031	0.25	"	"	"	"	"	
Nickel	4.92	0.0633	0.25	"	"	"	"	"	
Selenium	0.29	0.103	0.25	"	"	"	"	"	
Silver	0.0288	0.0067	0.25	"	"	"	"	"	J
Zinc	25.3	0.534	2.5	"	"	"	"	"	

Total Metals by 7196A

Chromium, Hexavalent	ND	0.497	1.02	mg/Kg	2	L597269	01/24/2022	02/01/2022	
----------------------	----	-------	------	-------	---	---------	------------	------------	--

Origins Laboratory, Inc.



Jen Pellegrini, Project Manager

The results in this report apply to the samples analyzed in accordance with the chain of custody document. This analytical report must be reproduced in its entirety.

Eagle Environmental Consulting, Inc.
8000 W 44th Ave
Wheat Ridge CO 80033

Martin C Eckert III
Project Number: [none]
Project: Noble - UPRC #27-9F Tank Battery

TB-SS-03@3'

1/24/2022 11:48:00AM

Analyte	Result	Min Detection Limit	Reporting Limit	Units	Dilution	Batch	Prepared	Analyzed	Notes
---------	--------	---------------------	-----------------	-------	----------	-------	----------	----------	-------

Origins Laboratory, Inc.
Y201428-08 (Soil)

Boron (DTPA Sorbitol)

Boron	0.198	0.198	mg/L	1	B2A2504	01/25/2022	01/26/2022	
-------	-------	-------	------	---	---------	------------	------------	--

DRO/ORO by EPA 8015D

Diesel (C10-C28)	ND	25.0	mg/kg	1	B2A2501	01/25/2022	01/28/2022	U
Residual Range Organics (C28-C40)	ND	100	"	"	"	"	"	U

Surrogate: o-Terphenyl	110 %	50-150			"	"	"	
------------------------	-------	--------	--	--	---	---	---	--

GBTEX+TMBs by 8260D

1,2,4-Trimethylbenzene	ND	0.00200	mg/kg	1	B2A2625	01/26/2022	02/03/2022	U
1,3,5-Trimethylbenzene	ND	0.00200	"	"	"	"	"	U
Benzene	ND	0.00200	"	"	"	"	"	U
Ethylbenzene	ND	0.00200	"	"	"	"	"	U
Toluene	ND	0.00200	"	"	"	"	"	U
Xylenes, total	ND	0.00200	"	"	"	"	"	U
Gasoline Range Hydrocarbons	1.06	0.200	"	"	"	"	"	

Surrogate: 1,2-Dichloroethane-d4	102 %	70-130			"	"	"	
Surrogate: Toluene-d8	97.2 %	70-130			"	"	"	

Origins Laboratory, Inc.



The results in this report apply to the samples analyzed in accordance with the chain of custody document. This analytical report must be reproduced in its entirety.

Jen Pellegrini, Project Manager

Eagle Environmental Consulting, Inc.
8000 W 44th Ave
Wheat Ridge CO 80033

Martin C Eckert III
Project Number: [none]
Project: Noble - UPRC #27-9F Tank Battery

TB-SS-03@3'

1/24/2022 11:48:00AM

Analyte	Result	Min Detection Limit	Reporting Limit	Units	Dilution	Batch	Prepared	Analyzed	Notes
---------	--------	---------------------	-----------------	-------	----------	-------	----------	----------	-------

Origins Laboratory, Inc.
Y201428-08 (Soil)

GBTEX+TMBs by 8260D

Surrogate: 4-Bromofluorobenzene 97.7 % 70-130 B2A26 25 01/26/2022 02/03/2022

Metals by Saturated Paste by EPA 6010

Calcium	1.19	0.499	meq/L	10	[CALC]	01/25/2022	01/26/2022
Magnesium	ND	0.823	"	"	"	"	"
Sodium	1.49	0.435	"	"	"	"	"

PAH by 8270D-SIM

1-Methylnaphthalene	ND	0.000364	0.00067	mg/Kg	1	L597182	01/31/2022	02/01/2022
2-Methylnaphthalene	ND	0.000645	0.00067	"	"	"	"	"
Acenaphthene	ND	0.000304	0.00067	"	"	"	"	"
Anthracene	ND	0.000334	0.00067	"	"	"	"	"
Benzo(a)anthracene	0.000579	0.000493	0.00067	"	"	"	"	" J
Benzo(a)pyrene	ND	0.000468	0.00067	"	"	"	"	"
Benzo(b)fluoranthene	0.0015	0.000585	0.00067	"	"	"	"	"
Benzo(k)fluoranthene	0.000519	0.000437	0.00067	"	"	"	"	" J
Chrysene	0.000676	0.000624	0.00067	"	"	"	"	"
Dibenz(a,h)anthracene	ND	0.000614	0.00067	"	"	"	"	"
Fluoranthene	0.000857	0.000394	0.00067	"	"	"	"	"
Fluorene	ND	0.000286	0.00067	"	"	"	"	"
Indeno(1,2,3-cd)pyrene	0.000926	0.000627	0.00067	"	"	"	"	"

Origins Laboratory, Inc.



The results in this report apply to the samples analyzed in accordance with the chain of custody document. This analytical report must be reproduced in its entirety.

Eagle Environmental Consulting, Inc.
8000 W 44th Ave
Wheat Ridge CO 80033

Martin C Eckert III
Project Number: [none]
Project: Noble - UPRC #27-9F Tank Battery

TB-SS-03@3'

1/24/2022 11:48:00AM

Analyte	Result	Min Detection Limit	Reporting Limit	Units	Dilution	Batch	Prepared	Analyzed	Notes
---------	--------	---------------------	-----------------	-------	----------	-------	----------	----------	-------

Waypoint Analytical, Inc.
Y201428-08 (Soil)

PAH by 8270D-SIM

Naphthalene	ND	0.000484	0.00067	mg/Kg	1	L597182	01/31/2022	02/01/2022
Pyrene	0.00139	0.000643	0.00067	"	"	"	"	"

Surrogate: 2-Fluorobiphenyl	56.3 %		33-115			"	"	"
Surrogate: 4-Terphenyl-d14	71.1 %		33-122			"	"	"
Surrogate: Nitrobenzene-d5	57.2 %		29-110			"	"	"

pH in Soil by 9045D

pH	7.59			pH Units	1	B2A2505	01/25/2022	01/26/2022
----	------	--	--	----------	---	---------	------------	------------

SAR by 20B Saturated Paste

SAR	1.62			SAR	1	B2A2503	01/25/2022	01/26/2022
-----	------	--	--	-----	---	---------	------------	------------

Specific Conductance Mod. 9050A

Specific Conductance (EC)	0.518		0.00500	mmhos/cm	1	B2A2506	01/25/2022	01/26/2022
---------------------------	-------	--	---------	----------	---	---------	------------	------------

Origins Laboratory, Inc.



Jen Pellegrini, Project Manager

The results in this report apply to the samples analyzed in accordance with the chain of custody document. This analytical report must be reproduced in its entirety.

Eagle Environmental Consulting, Inc.
8000 W 44th Ave
Wheat Ridge CO 80033

Martin C Eckert III
Project Number: [none]
Project: Noble - UPRC #27-9F Tank Battery

Extractable Petroleum Hydrocarbons by 8015D - Quality Control
Origins Laboratory, Inc.

Analyte	Result	Reporting Limit	Units	Spike Level	Source Result	%REC	%REC Limits	RPD	RPD Limit	Notes
Batch B2A2501 - EPA 3580										
Blank (B2A2501-BLK1)					Prepared: 01/25/2022 Analyzed: 01/28/2022					
Diesel (C10-C28)	ND	25.0	mg/kg							U
Residual Range Organics (C28-C40)	ND	100	"							U
Surrogate: o-Terphenyl	28		"	24.9		112	50-150			

Origins Laboratory, Inc.



Jen Pellegrini, Project Manager

The results in this report apply to the samples analyzed in accordance with the chain of custody document. This analytical report must be reproduced in its entirety.

Eagle Environmental Consulting, Inc.
8000 W 44th Ave
Wheat Ridge CO 80033

Martin C Eckert III
Project Number: [none]
Project: Noble - UPRC #27-9F Tank Battery

Extractable Petroleum Hydrocarbons by 8015D - Quality Control
Origins Laboratory, Inc.

Analyte	Result	Reporting Limit	Units	Spike Level	Source Result	%REC	%REC Limits	RPD	RPD Limit	Notes
---------	--------	-----------------	-------	-------------	---------------	------	-------------	-----	-----------	-------

Batch B2A2501 - EPA 3580

LCS (B2A2501-BS1)

Prepared: 01/25/2022 Analyzed: 01/28/2022

Diesel (C10-C28)	1170	50.0	mg/kg	1000		117	70-130			
Residual Range Organics (C28-C40)	967	200	"	1000		96.7	70-130			
Surrogate: o-Terphenyl	56		"	49.8		113	50-150			

Origins Laboratory, Inc.



Jen Pellegrini, Project Manager

The results in this report apply to the samples analyzed in accordance with the chain of custody document. This analytical report must be reproduced in its entirety.

Eagle Environmental Consulting, Inc.
8000 W 44th Ave
Wheat Ridge CO 80033

Martin C Eckert III
Project Number: [none]
Project: Noble - UPRC #27-9F Tank Battery

Extractable Petroleum Hydrocarbons by 8015D - Quality Control
Origins Laboratory, Inc.

Analyte	Result	Reporting Limit	Units	Spike Level	Source Result	%REC	%REC Limits	RPD	RPD Limit	Notes
---------	--------	-----------------	-------	-------------	---------------	------	-------------	-----	-----------	-------

Batch B2A2501 - EPA 3580

Matrix Spike (B2A2501-MS1)		Source: Y201415-01			Prepared: 01/25/2022 Analyzed: 01/28/2022					
Diesel (C10-C28)	1150	50.0	mg/kg	1000	ND	115	70-130			
Residual Range Organics (C28-C40)	972	200	"	1000	ND	97.2	70-130			
Surrogate: o-Terphenyl	51		"	49.8		102	50-150			

Origins Laboratory, Inc.



Jen Pellegrini, Project Manager

The results in this report apply to the samples analyzed in accordance with the chain of custody document. This analytical report must be reproduced in its entirety.

Eagle Environmental Consulting, Inc.
8000 W 44th Ave
Wheat Ridge CO 80033

Martin C Eckert III
Project Number: [none]
Project: Noble - UPRC #27-9F Tank Battery

Extractable Petroleum Hydrocarbons by 8015D - Quality Control Origins Laboratory, Inc.

Analyte	Result	Reporting Limit	Units	Spike Level	Source Result	%REC	%REC Limits	RPD	RPD Limit	Notes
---------	--------	-----------------	-------	-------------	---------------	------	-------------	-----	-----------	-------

Batch B2A2501 - EPA 3580

Matrix Spike Dup (B2A2501-MSD1)		Source: Y201415-01			Prepared: 01/25/2022 Analyzed: 01/28/2022					
Diesel (C10-C28)	1110	50.0	mg/kg	1000	ND	111	70-130	3.39	35	
Residual Range Organics (C28-C40)	961	200	"	1000	ND	96.1	70-130	1.18	35	
Surrogate: o-Terphenyl	50		"	49.8		101	50-150			

Origins Laboratory, Inc.



Jen Pellegrini, Project Manager

The results in this report apply to the samples analyzed in accordance with the chain of custody document. This analytical report must be reproduced in its entirety.

Eagle Environmental Consulting, Inc.
8000 W 44th Ave
Wheat Ridge CO 80033

Martin C Eckert III
Project Number: [none]
Project: Noble - UPRC #27-9F Tank Battery

Extractable Petroleum Hydrocarbons by 8015D - Quality Control

Origins Laboratory, Inc.

Analyte	Result	Reporting Limit	Units	Spike Level	Source Result	%REC	%REC Limits	RPD	RPD Limit	Notes
Batch B2A2625 - EPA 5030 (soil)										
Blank (B2A2625-BLK1)					Prepared: 01/26/2022 Analyzed: 02/02/2022					
1,2,4-Trimethylbenzene	ND	0.00200	mg/kg							U
1,3,5-Trimethylbenzene	ND	0.00200	"							U
Benzene	ND	0.00200	"							U
Ethylbenzene	ND	0.00200	"							U
Naphthalene	ND	0.0100	"							U
Toluene	ND	0.00200	"							U
Xylenes, total	ND	0.00200	"							U
Gasoline Range Hydrocarbons	ND	0.200	"							U
Surrogate: 1,2-Dichloroethane-d4	0.12		"	0.125		99.1	70-130			
Surrogate: Toluene-d8	0.13		"	0.125		101	70-130			
Surrogate: 4-Bromofluorobenzene	0.12		"	0.125		97.2	70-130			

Origins Laboratory, Inc.



Jen Pellegrini, Project Manager

The results in this report apply to the samples analyzed in accordance with the chain of custody document. This analytical report must be reproduced in its entirety.

Eagle Environmental Consulting, Inc.
8000 W 44th Ave
Wheat Ridge CO 80033

Martin C Eckert III
Project Number: [none]
Project: Noble - UPRC #27-9F Tank Battery

Volatile Organic Compounds by GC/MS SW846 8260D - Quality Control
Origins Laboratory, Inc.

Analyte	Result	Reporting Limit	Units	Spike Level	Source Result	%REC	%REC Limits	RPD	RPD Limit	Notes
Batch B2A2625 - EPA 5030 (soil)										
LCS (B2A2625-BS1)					Prepared: 01/26/2022 Analyzed: 02/02/2022					
1,2,4-Trimethylbenzene	0.104	0.00200	mg/kg	0.100		104	70-130			
1,3,5-Trimethylbenzene	0.110	0.00200	"	0.100		110	70-130			
Benzene	0.0998	0.00200	"	0.100		99.8	70-130			
Ethylbenzene	0.102	0.00200	"	0.100		102	70-130			
Naphthalene	0.0936	0.0100	"	0.100		93.6	70-130			
Toluene	0.105	0.00200	"	0.100		105	70-130			
o-Xylene	0.106	0.00200	"	0.100		106	70-130			
m,p-Xylene	0.206	0.00400	"	0.200		103	70-130			
Surrogate: 1,2-Dichloroethane-d4	0.12		"	0.125		96.6	70-130			
Surrogate: Toluene-d8	0.13		"	0.125		103	70-130			
Surrogate: 4-Bromofluorobenzene	0.12		"	0.125		97.5	70-130			

Origins Laboratory, Inc.



Jen Pellegrini, Project Manager

The results in this report apply to the samples analyzed in accordance with the chain of custody document. This analytical report must be reproduced in its entirety.

Eagle Environmental Consulting, Inc.
8000 W 44th Ave
Wheat Ridge CO 80033

Martin C Eckert III
Project Number: [none]
Project: Noble - UPRC #27-9F Tank Battery

Volatile Organic Compounds by GC/MS SW846 8260D - Quality Control
Origins Laboratory, Inc.

Analyte	Result	Reporting Limit	Units	Spike Level	Source Result	%REC	%REC Limits	RPD	RPD Limit	Notes
Batch B2A2625 - EPA 5030 (soil)										
Matrix Spike (B2A2625-MS1)		Source: Y201391-01			Prepared: 01/26/2022 Analyzed: 02/02/2022					
1,2,4-Trimethylbenzene	0.0629	0.00200	mg/kg	0.100	ND	62.9	70-130			QM-07
1,3,5-Trimethylbenzene	0.0676	0.00200	"	0.100	ND	67.6	70-130			QM-07
Benzene	0.0778	0.00200	"	0.100	ND	77.8	70-130			
Ethylbenzene	0.0684	0.00200	"	0.100	ND	68.4	70-130			QM-07
Naphthalene	0.0718	0.0100	"	0.100	0.00120	70.6	70-130			
Toluene	0.0740	0.00200	"	0.100	ND	74.0	70-130			
o-Xylene	0.0730	0.00200	"	0.100	ND	73.0	70-130			
m,p-Xylene	0.136	0.00400	"	0.200	ND	68.2	70-130			QM-07
Surrogate: 1,2-Dichloroethane-d4	0.13		"	0.125		100	70-130			
Surrogate: Toluene-d8	0.13		"	0.125		100	70-130			
Surrogate: 4-Bromofluorobenzene	0.12		"	0.125		98.3	70-130			

Origins Laboratory, Inc.



Jen Pellegrini, Project Manager

The results in this report apply to the samples analyzed in accordance with the chain of custody document. This analytical report must be reproduced in its entirety.

Eagle Environmental Consulting, Inc.
8000 W 44th Ave
Wheat Ridge CO 80033

Martin C Eckert III
Project Number: [none]
Project: Noble - UPRC #27-9F Tank Battery

Volatile Organic Compounds by GC/MS SW846 8260D - Quality Control
Origins Laboratory, Inc.

Analyte	Result	Reporting Limit	Units	Spike Level	Source Result	%REC	%REC Limits	RPD	RPD Limit	Notes
Batch B2A2625 - EPA 5030 (soil)										
Matrix Spike Dup (B2A2625-MSD1)		Source: Y201391-01			Prepared: 01/26/2022 Analyzed: 02/02/2022					
1,2,4-Trimethylbenzene	0.0602	0.00200	mg/kg	0.100	ND	60.2	70-130	4.48	20	QM-07
1,3,5-Trimethylbenzene	0.0641	0.00200	"	0.100	ND	64.1	70-130	5.29	20	QM-07
Benzene	0.0763	0.00200	"	0.100	ND	76.3	70-130	2.00	20	
Ethylbenzene	0.0651	0.00200	"	0.100	ND	65.1	70-130	4.91	20	QM-07
Naphthalene	0.0744	0.0100	"	0.100	0.00120	73.2	70-130	3.56	20	
Toluene	0.0721	0.00200	"	0.100	ND	72.1	70-130	2.68	20	
o-Xylene	0.0693	0.00200	"	0.100	ND	69.3	70-130	5.23	20	QM-07
m,p-Xylene	0.130	0.00400	"	0.200	ND	64.8	70-130	5.07	20	QM-07
Surrogate: 1,2-Dichloroethane-d4	0.13		"	0.125		101	70-130			
Surrogate: Toluene-d8	0.13		"	0.125		100	70-130			
Surrogate: 4-Bromofluorobenzene	0.12		"	0.125		97.2	70-130			

Origins Laboratory, Inc.



Jen Pellegrini, Project Manager

The results in this report apply to the samples analyzed in accordance with the chain of custody document. This analytical report must be reproduced in its entirety.

Eagle Environmental Consulting, Inc.
8000 W 44th Ave
Wheat Ridge CO 80033

Martin C Eckert III
Project Number: [none]
Project: Noble - UPRC #27-9F Tank Battery

Volatile Organic Compounds by GC/MS SW846 8260D - Quality Control
Origins Laboratory, Inc.

Analyte	Result	Reporting Limit	Units	Spike Level	Source Result	%REC	%REC Limits	RPD	RPD Limit	Notes
---------	--------	-----------------	-------	-------------	---------------	------	-------------	-----	-----------	-------

Classical Chemistry Parameters - Quality Control
Origins Laboratory, Inc.

Analyte	Result	Reporting Limit	Units	Spike Level	Source Result	%REC	%REC Limits	RPD	RPD Limit	Notes
---------	--------	-----------------	-------	-------------	---------------	------	-------------	-----	-----------	-------

Batch B2A2504 - Default Prep Metals

Blank (B2A2504-BLK1)

Prepared: 01/25/2022 Analyzed: 01/26/2022

Boron	ND	0.200	mg/L							U
-------	----	-------	------	--	--	--	--	--	--	---

Duplicate (B2A2504-DUP1)

Source: Y201424-06

Prepared: 01/25/2022 Analyzed: 01/26/2022

Boron	0.0396	0.198	mg/L		0.0399			0.795	50	U
-------	--------	-------	------	--	--------	--	--	-------	----	---

Origins Laboratory, Inc.



Jen Pellegrini, Project Manager

The results in this report apply to the samples analyzed in accordance with the chain of custody document. This analytical report must be reproduced in its entirety.

Eagle Environmental Consulting, Inc.
8000 W 44th Ave
Wheat Ridge CO 80033

Martin C Eckert III
Project Number: [none]
Project: Noble - UPRC #27-9F Tank Battery

Saturated Paste - Quality Control Origins Laboratory, Inc.

Analyte	Result	Reporting Limit	Units	Spike Level	Source Result	%REC	%REC Limits	RPD	RPD Limit	Notes
Batch B2A2505 - NO PREP										
Duplicate (B2A2505-DUP1)		Source: Y201424-04			Prepared: 01/25/2022 Analyzed: 01/26/2022					
pH	7.99		pH Units		8.08			1.12	25	
Batch B2A2506 - NO PREP										
Blank (B2A2506-BLK1)		Prepared: 01/25/2022 Analyzed: 01/26/2022								
Specific Conductance (EC)	ND	0.00500	mmhos/cm							U
Duplicate (B2A2506-DUP1)		Source: Y201424-04			Prepared: 01/25/2022 Analyzed: 01/26/2022					
Specific Conductance (EC)	0.533	0.00500	mmhos/cm		0.592			10.3	25	

Origins Laboratory, Inc.



Jen Pellegrini, Project Manager

The results in this report apply to the samples analyzed in accordance with the chain of custody document. This analytical report must be reproduced in its entirety.

Eagle Environmental Consulting, Inc.
8000 W 44th Ave
Wheat Ridge CO 80033

Martin C Eckert III
Project Number: [none]
Project: Noble - UPRC #27-9F Tank Battery

Total Metals by 6020B - Quality Control Waypoint Analytical, LLC.

Analyte	Result	Reporting Limit	Units	Spike Level	Source Result	%REC	%REC Limits	RPD	RPD Limit	Notes
---------	--------	-----------------	-------	-------------	---------------	------	-------------	-----	-----------	-------

Batch L598376 - 3050B

MSD (L 88382-MSD-L598376)		Source: 88382			Prepared: 02/09/2022 Analyzed: 02/13/2022					
Arsenic	5.12	0.0855	mg/Kg	2.37	2.69	103	75-125	0.5	80	
Silver	0.48	0.0067	"	0.473	0.0618	101	75-125	6.6	80	
Zinc	54.9	0.534	"	23.7	33.9	89	75-125	2.3	80	
Selenium	3.44	0.103	"	4.73	<0.103	73	75-125	6.1	80	*
Nickel	12.1	0.0633	"	2.37	10.4	72	75-125	1.6	80	*
Lead	8.6	0.031	"	2.37	6.84	74	75-125	0.3	80	*
Copper	11.1	0.0806	"	2.37	9.42	71	75-125	0.9	80	*
Barium	89.9	0.042	"	4.73	95.7	NR	75-125	20.1	80	*
Cadmium	0.565	0.0259	"	0.473	0.173	119	75-125	7.4	80	

MS (L 88382-MS-L598376)		Source: 88382			Prepared: 02/09/2022 Analyzed: 02/13/2022					
Selenium	3.66	0.103	mg/Kg	4.63	<0.103	79	75-125			
Arsenic	5.15	0.0855	"	2.32	2.69	106	75-125			
Barium	110	0.042	"	4.63	95.7	309	75-125			*
Cadmium	0.609	0.0259	"	0.463	0.173	131	75-125			*
Copper	11	0.0806	"	2.32	9.42	68	75-125			*
Lead	8.63	0.031	"	2.32	6.84	77	75-125			
Nickel	12.3	0.0633	"	2.32	10.4	82	75-125			
Zinc	53.6	0.534	"	23.2	33.9	85	75-125			
Silver	0.513	0.0067	"	0.463	0.0618	111	75-125			

LCS (LCS-L598376)		Prepared: 02/09/2022 Analyzed: 02/13/2022								
Cadmium	0.48	0.0259	mg/Kg	0.5		96	80-120			
Silver	0.489	0.0067	"	0.5		98	80-120			
Selenium	4.79	0.103	"	5		96	80-120			
Nickel	2.42	0.0633	"	2.5		97	80-120			
Copper	2.34	0.0806	"	2.5		94	80-120			

Origins Laboratory, Inc.



Jen Pellegrini, Project Manager

The results in this report apply to the samples analyzed in accordance with the chain of custody document. This analytical report must be reproduced in its entirety.

Eagle Environmental Consulting, Inc.
8000 W 44th Ave
Wheat Ridge CO 80033

Martin C Eckert III
Project Number: [none]
Project: Noble - UPRC #27-9F Tank Battery

Total Metals by 6020B - Quality Control Waypoint Analytical, LLC.

Analyte	Result	Reporting Limit	Units	Spike Level	Source Result	%REC	%REC Limits	RPD	RPD Limit	Notes
---------	--------	-----------------	-------	-------------	---------------	------	-------------	-----	-----------	-------

Batch L598376 - 3050B

LCS (LCS-L598376)

Prepared: 02/09/2022 Analyzed: 02/13/2022

Arsenic	2.45	0.0855	mg/Kg	2.5		98	80-120			
Barium	4.69	0.042	"	5		94	80-120			
Lead	2.4	0.031	"	2.5		96	80-120			
Zinc	23.3	0.534	"	25		93	80-120			

LRB (LRB-L598376)

Prepared: 02/09/2022 Analyzed: 02/13/2022

Copper	ND	0.25	mg/Kg				-			
Arsenic	ND	0.25	"				-			
Selenium	ND	0.25	"				-			
Silver	ND	0.25	"				-			
Lead	ND	0.25	"				-			
Nickel	ND	0.25	"				-			
Cadmium	ND	0.25	"				-			
Zinc	ND	2.5	"				-			
Barium	ND	0.25	"				-			

Origins Laboratory, Inc.



Jen Pellegrini, Project Manager

The results in this report apply to the samples analyzed in accordance with the chain of custody document. This analytical report must be reproduced in its entirety.

Eagle Environmental Consulting, Inc.
8000 W 44th Ave
Wheat Ridge CO 80033

Martin C Eckert III
Project Number: [none]
Project: Noble - UPRC #27-9F Tank Battery

Total Metals by 7196A - Quality Control Waypoint Analytical, LLC.

Analyte	Result	Reporting Limit	Units	Spike Level	Source Result	%REC	%REC Limits	RPD	RPD Limit	Notes
Batch L599558 -										
DUP (L 91183-DUP)		Source: 91183			Prepared: Analyzed: 02/15/2022					
Chromium, Hexavalent	ND	0.488	mg/Kg		<1.00	-		0	20	
MS (L 91183-MS)		Source: 91183			Prepared: Analyzed: 02/15/2022					
Chromium, Hexavalent	6.14	0.488	mg/Kg	8	<0.488	77	75-125			
LCS (LCS)					Prepared: Analyzed: 02/15/2022					
Chromium, Hexavalent	6.84	0.244	mg/Kg	8		86	75-125			
LRB (LRB)					Prepared: Analyzed: 02/15/2022					
Chromium, Hexavalent	ND	0.5	mg/Kg							

Origins Laboratory, Inc.



Jen Pellegrini, Project Manager

The results in this report apply to the samples analyzed in accordance with the chain of custody document. This analytical report must be reproduced in its entirety.

Eagle Environmental Consulting, Inc.
8000 W 44th Ave
Wheat Ridge CO 80033

Martin C Eckert III
Project Number: [none]
Project: Noble - UPRC #27-9F Tank Battery

PAH by 8270D SIM - Quality Control
Waypoint Analytical, Inc.

Analyte	Result	Reporting Limit	Units	Spike Level	Source Result	%REC	%REC Limits	RPD	RPD Limit	Notes
---------	--------	-----------------	-------	-------------	---------------	------	-------------	-----	-----------	-------

Batch L596796 - 3550B

MSD (L 99722-MSD-L596796)		Source: 99722			Prepared: 01/28/2022 Analyzed: 01/31/2022					
Benzo(a)pyrene	0.12	0.000468	mg/Kg	0.167	<0.000468	71.8	30-130	2.4	30	
Dibenz(a,h)anthracene	0.109	0.000614	"	0.167	<0.000614	65.2	30-130	1.8	30	
Chrysene	0.115	0.000624	"	0.167	<0.000624	68.8	30-130	3.4	30	
Benzo(k)fluoranthene	0.113	0.000437	"	0.167	<0.000437	67.6	30-130	0	30	
Fluoranthene	0.111	0.000394	"	0.167	0.000397	66.4	30-130	0.8	30	
Benzo(b)fluoranthene	0.102	0.000585	"	0.167	<0.000585	61	30-130	2.8	30	
Benzo(a)anthracene	0.112	0.000493	"	0.167	<0.000493	67	30-130	2.6	30	
Acenaphthene	0.0876	0.000304	"	0.167	<0.000304	52.4	30-130	5.7	30	
2-Methylnaphthalene	0.0893	0.000645	"	0.167	<0.000645	53.4	30-130	3.3	30	
1-Methylnaphthalene	0.0892	0.000364	"	0.167	<0.000364	53.4	30-130	2.8	30	
Fluorene	0.0939	0.000286	"	0.167	<0.000286	56.2	30-130	7.2	30	
Anthracene	0.0977	0.000334	"	0.167	<0.000334	58.5	30-130	3.3	30	
Naphthalene	0.0882	0.000484	"	0.167	<0.000484	52.8	30-130	3.1	30	
Pyrene	0.111	0.000643	"	0.167	<0.000643	66.4	30-130	0	30	
Indeno(1,2,3-cd)pyrene	0.103	0.000627	"	0.167	<0.000627	61.6	30-130	2.8	30	
Surrogate: 2-Fluorobiphenyl	48.9		"	0.333	176	48.9	33-115			
Surrogate: Nitrobenzene-d5	49.2		"	0.333	170	49.2	29-110			
Surrogate: 4-Terphenyl-d14	68.7		"	0.333	229	68.7	33-122			

MS (L 99722-MS-L596796)		Source: 99722			Prepared: 01/28/2022 Analyzed: 01/31/2022					
Chrysene	0.119	0.000624	mg/Kg	0.167	<0.000624	71.2	30-130			
Pyrene	0.111	0.000643	"	0.167	<0.000643	66.4	30-130			
Naphthalene	0.091	0.000484	"	0.167	<0.000484	54.4	30-130			
Indeno(1,2,3-cd)pyrene	0.106	0.000627	"	0.167	<0.000627	63.4	30-130			
Fluorene	0.101	0.000286	"	0.167	<0.000286	60.4	30-130			
Dibenz(a,h)anthracene	0.111	0.000614	"	0.167	<0.000614	66.4	30-130			
Benzo(k)fluoranthene	0.113	0.000437	"	0.167	<0.000437	67.6	30-130			

Origins Laboratory, Inc.



Jen Pellegrini, Project Manager

The results in this report apply to the samples analyzed in accordance with the chain of custody document. This analytical report must be reproduced in its entirety.

Eagle Environmental Consulting, Inc.
8000 W 44th Ave
Wheat Ridge CO 80033

Martin C Eckert III
Project Number: [none]
Project: Noble - UPRC #27-9F Tank Battery

PAH by 8270D SIM - Quality Control
Waypoint Analytical, Inc.

Analyte	Result	Reporting Limit	Units	Spike Level	Source Result	%REC	%REC Limits	RPD	RPD Limit	Notes
---------	--------	-----------------	-------	-------------	---------------	------	-------------	-----	-----------	-------

Batch L596796 - 3550B

MS (L 99722-MS-L596796)		Source: 99722			Prepared: 01/28/2022 Analyzed: 01/31/2022					
2-Methylnaphthalene	0.0923	0.000645	mg/Kg	0.167	<0.000645	55.2	30-130			
Fluoranthene	0.112	0.000394	"	0.167	0.000397	67	30-130			
Benzo(b)fluoranthene	0.105	0.000585	"	0.167	<0.000585	62.8	30-130			
Acenaphthene	0.0928	0.000304	"	0.167	<0.000304	55.5	30-130			
Anthracene	0.101	0.000334	"	0.167	<0.000334	60.4	30-130			
Benzo(a)anthracene	0.115	0.000493	"	0.167	<0.000493	68.8	30-130			
Benzo(a)pyrene	0.123	0.000468	"	0.167	<0.000468	73.6	30-130			
1-Methylnaphthalene	0.0918	0.000364	"	0.167	<0.000364	54.9	30-130			
Surrogate: Nitrobenzene-d5	52.2		"	0.333	170	52.2	29-110			
Surrogate: 2-Fluorobiphenyl	51.6		"	0.333	176	51.6	33-115			
Surrogate: 4-Terphenyl-d14	69.3		"	0.333	229	69.3	33-122			

LCS (LCS-L596796)		Prepared: 01/28/2022 Analyzed: 01/31/2022								
Pyrene	0.105	0.000643	mg/Kg	0.167		62.8	30-130			
Benzo(a)pyrene	0.108	0.000468	"	0.167		64.6	30-130			
Chrysene	0.106	0.000624	"	0.167		63.4	30-130			
Dibenz(a,h)anthracene	0.0822	0.000614	"	0.167		49.2	30-130			
Fluoranthene	0.104	0.000394	"	0.167		62.2	30-130			
Fluorene	0.0929	0.000286	"	0.167		55.6	30-130			
Indeno(1,2,3-cd)pyrene	0.0734	0.000627	"	0.167		43.9	30-130			
Naphthalene	0.0886	0.000484	"	0.167		53	30-130			
1-Methylnaphthalene	0.088	0.000364	"	0.167		52.6	30-130			
2-Methylnaphthalene	0.0894	0.000645	"	0.167		53.5	30-130			
Acenaphthene	0.0855	0.000304	"	0.167		51.1	30-130			
Anthracene	0.0947	0.000334	"	0.167		56.7	30-130			
Benzo(a)anthracene	0.105	0.000493	"	0.167		62.8	30-130			
Benzo(k)fluoranthene	0.101	0.000437	"	0.167		60.4	30-130			

Origins Laboratory, Inc.



Jen Pellegrini, Project Manager

The results in this report apply to the samples analyzed in accordance with the chain of custody document. This analytical report must be reproduced in its entirety.

Eagle Environmental Consulting, Inc.
8000 W 44th Ave
Wheat Ridge CO 80033

Martin C Eckert III
Project Number: [none]
Project: Noble - UPRC #27-9F Tank Battery

PAH by 8270D SIM - Quality Control
Waypoint Analytical, Inc.

Analyte	Result	Reporting Limit	Units	Spike Level	Source Result	%REC	%REC Limits	RPD	RPD Limit	Notes
---------	--------	-----------------	-------	-------------	---------------	------	-------------	-----	-----------	-------

Batch L596796 - 3550B

LCS (LCS-L596796)

Prepared: 01/28/2022 Analyzed: 01/31/2022

Benzo(b)fluoranthene	0.0876	0.000585	mg/Kg	0.167		52.4	30-130			
Surrogate: Nitrobenzene-d5	57.6		"	0.333		57.6	29-110			
Surrogate: 2-Fluorobiphenyl	58.2		"	0.333		58.2	33-115			
Surrogate: 4-Terphenyl-d14	69		"	0.333		69	33-122			

LRB (LRB-L596796)

Prepared: 01/28/2022 Analyzed: 01/31/2022

2-Methylnaphthalene	ND	0.00067	mg/Kg				-			
Pyrene	ND	0.00067	"				-			
Dibenz(a,h)anthracene	ND	0.00067	"				-			
Naphthalene	ND	0.00067	"				-			
Indeno(1,2,3-cd)pyrene	ND	0.00067	"				-			
1-Methylnaphthalene	ND	0.00067	"				-			
Fluoranthene	ND	0.00067	"				-			
Acenaphthene	ND	0.00067	"				-			
Chrysene	ND	0.00067	"				-			
Benzo(k)fluoranthene	ND	0.00067	"				-			
Benzo(b)fluoranthene	ND	0.00067	"				-			
Benzo(a)pyrene	ND	0.00067	"				-			
Benzo(a)anthracene	ND	0.00067	"				-			
Anthracene	ND	0.00067	"				-			
Fluorene	ND	0.00067	"				-			
Surrogate: Nitrobenzene-d5	53.7		"	0.333		53.7	29-110			
Surrogate: 2-Fluorobiphenyl	57		"	0.333		57	33-115			
Surrogate: 4-Terphenyl-d14	67.2		"	0.333		67.2	33-122			

Origins Laboratory, Inc.



Jen Pellegrini, Project Manager

The results in this report apply to the samples analyzed in accordance with the chain of custody document. This analytical report must be reproduced in its entirety.

Eagle Environmental Consulting, Inc.
8000 W 44th Ave
Wheat Ridge CO 80033

Martin C Eckert III
Project Number: [none]
Project: Noble - UPRC #27-9F Tank Battery

PAH by 8270D-SIM - Quality Control
Waypoint Analytical, Inc.

Analyte	Result	Reporting Limit	Units	Spike Level	Source Result	%REC	%REC Limits	RPD	RPD Limit	Notes
---------	--------	-----------------	-------	-------------	---------------	------	-------------	-----	-----------	-------

Batch L597182 - 3550B

MSD (L 86497-MSD-L597182)		Source: 86497			Prepared: 01/31/2022 Analyzed: 02/01/2022					
Acenaphthene	0.118	0.000304	mg/Kg	0.166	0.0011	70.4	30-130	0.8	30	
1-Methylnaphthalene	0.111	0.000364	"	0.166	0.000769	66.4	30-130	1.8	30	
Anthracene	0.121	0.000334	"	0.166	<0.000334	72.8	30-130	3.3	30	
Indeno(1,2,3-cd)pyrene	0.119	0.000627	"	0.166	<0.000627	71.6	30-130	18.4	30	
2-Methylnaphthalene	0.111	0.000645	"	0.166	0.00112	66.1	30-130	2.7	30	
Benzo(a)anthracene	0.136	0.000493	"	0.166	<0.000493	81.9	30-130	4.5	30	
Pyrene	0.127	0.000643	"	0.166	0.000809	76	30-130	1.5	30	
Naphthalene	0.108	0.000484	"	0.166	<0.000484	65	30-130	2.8	30	
Fluorene	0.119	0.000286	"	0.166	0.00323	69.7	30-130	0.8	30	
Fluoranthene	0.13	0.000394	"	0.166	<0.000394	78.3	30-130	3.1	30	
Dibenz(a,h)anthracene	0.109	0.000614	"	0.166	<0.000614	65.6	30-130	18.3	30	
Chrysene	0.116	0.000624	"	0.166	0.00162	68.9	30-130	1.7	30	
Benzo(k)fluoranthene	0.111	0.000437	"	0.166	<0.000437	66.8	30-130	14.7	30	
Benzo(b)fluoranthene	0.124	0.000585	"	0.166	<0.000585	74.6	30-130	3.1	30	
Benzo(a)pyrene	0.135	0.000468	"	0.166	0.000493	81.3	30-130	1.4	30	
Surrogate: 2-Fluorobiphenyl	59.2		"	0.331	189	59.2	33-115			
Surrogate: 4-Terphenyl-d14	68.8		"	0.331	210	68.8	33-122			
Surrogate: Nitrobenzene-d5	60.1		"	0.331	191	60.1	29-110			

MS (L 86497-MS-L597182)		Source: 86497			Prepared: 01/31/2022 Analyzed: 02/01/2022					
Benzo(k)fluoranthene	0.0958	0.000437	mg/Kg	0.165	<0.000437	58	30-130			
Acenaphthene	0.117	0.000304	"	0.165	0.0011	70.2	30-130			
Benzo(a)anthracene	0.13	0.000493	"	0.165	<0.000493	78.7	30-130			
Benzo(a)pyrene	0.133	0.000468	"	0.165	0.000493	80.6	30-130			
Benzo(b)fluoranthene	0.128	0.000585	"	0.165	<0.000585	77.5	30-130			
Chrysene	0.114	0.000624	"	0.165	0.00162	68.1	30-130			
Dibenz(a,h)anthracene	0.0907	0.000614	"	0.165	<0.000614	54.9	30-130			

Origins Laboratory, Inc.



Jen Pellegrini, Project Manager

The results in this report apply to the samples analyzed in accordance with the chain of custody document. This analytical report must be reproduced in its entirety.

Eagle Environmental Consulting, Inc.
8000 W 44th Ave
Wheat Ridge CO 80033

Martin C Eckert III
Project Number: [none]
Project: Noble - UPRC #27-9F Tank Battery

PAH by 8270D-SIM - Quality Control
Waypoint Analytical, Inc.

Analyte	Result	Reporting Limit	Units	Spike Level	Source Result	%REC	%REC Limits	RPD	RPD Limit	Notes
---------	--------	-----------------	-------	-------------	---------------	------	-------------	-----	-----------	-------

Batch L597182 - 3550B

MS (L 86497-MS-L597182)		Source: 86497			Prepared: 01/31/2022 Analyzed: 02/01/2022					
Fluoranthene	0.126	0.000394	mg/Kg	0.165	<0.000394	76.3	30-130			
Fluorene	0.12	0.000286	"	0.165	0.00323	70.7	30-130			
2-Methylnaphthalene	0.108	0.000645	"	0.165	0.00112	64.7	30-130			
Naphthalene	0.105	0.000484	"	0.165	<0.000484	63.6	30-130			
Pyrene	0.125	0.000643	"	0.165	0.000809	75.2	30-130			
Indeno(1,2,3-cd)pyrene	0.0989	0.000627	"	0.165	<0.000627	59.9	30-130			
Anthracene	0.117	0.000334	"	0.165	<0.000334	70.9	30-130			
1-Methylnaphthalene	0.109	0.000364	"	0.165	0.000769	65.5	30-130			
Surrogate: Nitrobenzene-d5	62.7		"	0.33	191	62.7	29-110			
Surrogate: 4-Terphenyl-d14	67.5		"	0.33	210	67.5	33-122			
Surrogate: 2-Fluorobiphenyl	62.7		"	0.33	189	62.7	33-115			

LCS (LCS-L597182)

Prepared: 01/31/2022 Analyzed: 02/01/2022

Indeno(1,2,3-cd)pyrene	0.101	0.000627	mg/Kg	0.167		60.4	30-130
1-Methylnaphthalene	0.11	0.000364	"	0.167		65.8	30-130
2-Methylnaphthalene	0.11	0.000645	"	0.167		65.8	30-130
Acenaphthene	0.117	0.000304	"	0.167		70	30-130
Anthracene	0.117	0.000334	"	0.167		70	30-130
Benzo(a)anthracene	0.119	0.000493	"	0.167		71.2	30-130
Naphthalene	0.107	0.000484	"	0.167		64	30-130
Benzo(a)pyrene	0.124	0.000468	"	0.167		74.2	30-130
Pyrene	0.122	0.000643	"	0.167		73	30-130
Fluorene	0.119	0.000286	"	0.167		71.2	30-130
Fluoranthene	0.125	0.000394	"	0.167		74.8	30-130
Dibenz(a,h)anthracene	0.0964	0.000614	"	0.167		57.7	30-130
Chrysene	0.116	0.000624	"	0.167		69.4	30-130
Benzo(k)fluoranthene	0.0981	0.000437	"	0.167		58.7	30-130

Origins Laboratory, Inc.



Jen Pellegrini, Project Manager

The results in this report apply to the samples analyzed in accordance with the chain of custody document. This analytical report must be reproduced in its entirety.

Eagle Environmental Consulting, Inc.
8000 W 44th Ave
Wheat Ridge CO 80033

Martin C Eckert III
Project Number: [none]
Project: Noble - UPRC #27-9F Tank Battery

PAH by 8270D-SIM - Quality Control
Waypoint Analytical, Inc.

Analyte	Result	Reporting Limit	Units	Spike Level	Source Result	%REC	%REC Limits	RPD	RPD Limit	Notes
---------	--------	-----------------	-------	-------------	---------------	------	-------------	-----	-----------	-------

Batch L597182 - 3550B

LCS (LCS-L597182)

Prepared: 01/31/2022 Analyzed: 02/01/2022

Benzo(b)fluoranthene	0.118	0.000585	mg/Kg	0.167		70.6	30-130			
Surrogate: 4-Terphenyl-d14	75.6		"	0.333		75.6	33-122			
Surrogate: Nitrobenzene-d5	65.7		"	0.333		65.7	29-110			
Surrogate: 2-Fluorobiphenyl	66		"	0.333		66	33-115			

LRB (LRB-L597182)

Prepared: 01/31/2022 Analyzed: 02/01/2022

Benzo(b)fluoranthene	ND	0.00067	mg/Kg				-			
Naphthalene	ND	0.00067	"				-			
Indeno(1,2,3-cd)pyrene	ND	0.00067	"				-			
Fluorene	ND	0.00067	"				-			
Fluoranthene	ND	0.00067	"				-			
Dibenz(a,h)anthracene	ND	0.00067	"				-			
Chrysene	ND	0.00067	"				-			
Benzo(k)fluoranthene	ND	0.00067	"				-			
Benzo(a)pyrene	ND	0.00067	"				-			
Benzo(a)anthracene	ND	0.00067	"				-			
Anthracene	ND	0.00067	"				-			
Acenaphthene	ND	0.00067	"				-			
2-Methylnaphthalene	ND	0.00067	"				-			
1-Methylnaphthalene	ND	0.00067	"				-			
Pyrene	ND	0.00067	"				-			
Surrogate: Nitrobenzene-d5	65.1		"	0.333		65.1	29-110			
Surrogate: 4-Terphenyl-d14	75		"	0.333		75	33-122			
Surrogate: 2-Fluorobiphenyl	64.8		"	0.333		64.8	33-115			

Origins Laboratory, Inc.



Jen Pellegrini, Project Manager

The results in this report apply to the samples analyzed in accordance with the chain of custody document. This analytical report must be reproduced in its entirety.

Eagle Environmental Consulting, Inc.
8000 W 44th Ave
Wheat Ridge CO 80033

Martin C Eckert III
Project Number: [none]
Project: Noble - UPRC #27-9F Tank Battery

Total Metals by 6020B - Quality Control
Waypoint Analytical, Inc.

Analyte	Result	Reporting Limit	Units	Spike Level	Source Result	%REC	%REC Limits	RPD	RPD Limit	Notes
---------	--------	-----------------	-------	-------------	---------------	------	-------------	-----	-----------	-------

Batch L596447 - 3050B

MSD (L 99602-MSD-L596447)			Source: 99602		Prepared: 01/26/2022 Analyzed: 01/28/2022					
Selenium	4.41	0.103	mg/Kg dry	4.93	<0.103	89	75-125	1.1	80	
Barium	90	0.042	"	4.93	12.5	NR	75-125	119	80	*
Cadmium	0.546	0.0259	"	0.493	<0.0259	111	75-125	14.3	80	
Copper	7.7	0.0806	"	2.47	0.815	279	75-125	81.5	80	*
Nickel	3.25	0.0633	"	2.47	0.116	132	75-125	26	80	*
Silver	0.485	0.0067	"	0.493	<0.0067	98	75-125	3.9	80	
Zinc	45.4	0.534	"	24.7	3.64	169	75-125	51.8	80	*
Lead	2.62	0.031	"	2.47	0.0851	106	75-125	9.1	80	
Arsenic	2.43	0.0855	"	2.47	<0.0855	99	75-125	5.4	80	

MS (L 99602-MS-L596447)			Source: 99602		Prepared: 01/26/2022 Analyzed: 01/28/2022					
Copper	3.24	0.0806	mg/Kg dry	2.45	0.815	99	75-125			
Zinc	26.7	0.534	"	24.5	3.64	94	75-125			
Silver	0.466	0.0067	"	0.491	<0.0067	95	75-125			
Selenium	4.46	0.103	"	4.91	<0.103	91	75-125			
Lead	2.39	0.031	"	2.45	0.0851	97	75-125			
Cadmium	0.473	0.0259	"	0.491	<0.0259	96	75-125			
Barium	22.7	0.042	"	4.91	12.5	208	75-125			*
Arsenic	2.3	0.0855	"	2.45	<0.0855	94	75-125			
Nickel	2.5	0.0633	"	2.45	0.116	102	75-125			

LCS (LCS-L596447)			Prepared: 01/26/2022 Analyzed: 01/28/2022							
Lead	2.32	0.031	mg/Kg	2.5		93	80-120			
Arsenic	2.31	0.0855	"	2.5		92	80-120			
Zinc	23.5	0.534	"	25		94	80-120			
Silver	0.468	0.0067	"	0.5		94	80-120			
Selenium	4.52	0.103	"	5		90	80-120			

Origins Laboratory, Inc.



Jen Pellegrini, Project Manager

The results in this report apply to the samples analyzed in accordance with the chain of custody document. This analytical report must be reproduced in its entirety.

Eagle Environmental Consulting, Inc.
8000 W 44th Ave
Wheat Ridge CO 80033

Martin C Eckert III
Project Number: [none]
Project: Noble - UPRC #27-9F Tank Battery

Total Metals by 6020B - Quality Control Waypoint Analytical, Inc.

Analyte	Result	Reporting Limit	Units	Spike Level	Source Result	%REC	%REC Limits	RPD	RPD Limit	Notes
---------	--------	-----------------	-------	-------------	---------------	------	-------------	-----	-----------	-------

Batch L596447 - 3050B

LCS (LCS-L596447)

Prepared: 01/26/2022 Analyzed: 01/28/2022

Nickel	2.49	0.0633	mg/Kg	2.5		100	80-120			
Cadmium	0.467	0.0259	"	0.5		93	80-120			
Barium	4.78	0.042	"	5		96	80-120			
Copper	2.35	0.0806	"	2.5		94	80-120			

LRB (LRB-L596447)

Prepared: 01/26/2022 Analyzed: 01/28/2022

Barium	ND	0.25	mg/Kg				-			
Zinc	ND	2.5	"				-			
Silver	ND	0.25	"				-			
Selenium	ND	0.25	"				-			
Nickel	ND	0.25	"				-			
Lead	ND	0.25	"				-			
Cadmium	ND	0.25	"				-			
Arsenic	ND	0.25	"				-			
Copper	ND	0.25	"				-			

Origins Laboratory, Inc.



Jen Pellegrini, Project Manager

The results in this report apply to the samples analyzed in accordance with the chain of custody document. This analytical report must be reproduced in its entirety.

Eagle Environmental Consulting, Inc.
8000 W 44th Ave
Wheat Ridge CO 80033

Martin C Eckert III
Project Number: [none]
Project: Noble - UPRC #27-9F Tank Battery

Total Metals by 7196A - Quality Control
Waypoint Analytical, Inc.

Analyte	Result	Reporting Limit	Units	Spike Level	Source Result	%REC	%REC Limits	RPD	RPD Limit	Notes
Batch L597269 -										
DUP (L 99702-DUP)		Source: 99702			Prepared: Analyzed: 02/01/2022					
Chromium, Hexavalent	ND	0.246	mg/Kg		<0.505	-		0	20	
MS (L 99702-MS)		Source: 99702			Prepared: Analyzed: 02/01/2022					
Chromium, Hexavalent	5.7	0.244	mg/Kg	7.87	<0.244	72	75-125			*
LCS (LCS)					Prepared: Analyzed: 02/01/2022					
Chromium, Hexavalent	6.41	0.244	mg/Kg	8		80	75-125			
LRB (LRB)					Prepared: Analyzed: 02/01/2022					
Chromium, Hexavalent	ND	0.5	mg/Kg							

Origins Laboratory, Inc.



Jen Pellegrini, Project Manager

The results in this report apply to the samples analyzed in accordance with the chain of custody document. This analytical report must be reproduced in its entirety.

Eagle Environmental Consulting, Inc.
8000 W 44th Ave
Wheat Ridge CO 80033

Martin C Eckert III
Project Number: [none]
Project: Noble - UPRC #27-9F Tank Battery

Notes and Definitions

U Sample is Non-Detect.

QM-07 The spike recovery was outside acceptance limits for the MS and/or MSD. The batch was accepted based on acceptable LCS recovery.

J Estimated Value. Analyte below reported quantitation limit.

* QC Failure

ND Analyte NOT DETECTED at or above the reporting limit

RPD Relative Percent Difference

All soil results are reported on a wet weight basis.

Origins Laboratory, Inc.



Jen Pellegrini, Project Manager

The results in this report apply to the samples analyzed in accordance with the chain of custody document. This analytical report must be reproduced in its entirety.



February 17, 2022

Eagle Environmental Consulting, Inc.

Martin C Eckert III

8000 W 44th Ave

Wheat Ridge CO 80033

Project Name - Noble - UPRC #27-9F Tank Battery Project Number - [none]

Attached are your analytical results for Noble - UPRC #27-9F Tank Battery received by Origins Laboratory, Inc. February 07, 2022. This project is associated with Origins project number Y202113-01.

The analytical results in the following report were analyzed under the guidelines of EPA Methods. These methods are identified as follows; "SW" are defined in SW-846, "EPA" are defined in 40CFR part 136 and "SM" are defined in the most current revision of Standard Methods For the Examination of Water and Wastewater.

The analytical results apply specifically to the samples and analyses specified per the attached Chain of Custody. As such, this report shall not be reproduced except in full, without the written approval of Origin's laboratory.

Unless otherwise noted, the analytical results for all soil samples are reported on a wet weight basis. All analytical analyses were performed under NELAP guidelines unless noted by a data qualifier.

Any holding time exceedances, deviations from the method specifications or deviations from Origins Laboratory's Standard Operating Procedures are outlined in the case narrative.

Thank you for selecting Origins for your analytical needs. Please contact us with any questions concerning this report, or if we can help with anything at all.

Origins Laboratory, Inc.
303.433.1322
o-squad@oelabinc.com



1725 Elk Place, Denver, CO 80211 | Phone: 303.433.1322 | Fax: 303.265.9645

Eagle Environmental Consulting, Inc.

8000 W 44th Ave

Wheat Ridge CO 80033

Martin C Eckert III

Project Number: [none]

Project: Noble - UPRC #27-9F Tank Battery

CROSS REFERENCE REPORT

Sample ID	Laboratory ID	Matrix	Date Sampled	Date Received
Background-01@3'	Y202113-01	Soil	January 24, 2022 10:35	02/07/2022 14:48

Origins Laboratory, Inc.



The results in this report apply to the samples analyzed in accordance with the chain of custody document. This analytical report must be reproduced in its entirety.

Eagle Environmental Consulting, Inc.
8000 W 44th Ave
Wheat Ridge CO 80033

Martin C Eckert III
Project Number: [none]
Project: Noble - UPRC #27-9F Tank Battery

www.originslaboratory.com

4202113

ORIGINS
LABORATORY, INC

page 1 of 1

Client: Eagle Env. Consulting, Inc.
Address: 8000 W 44th Ave
Telephone Number: (303) 433-0479
Email Address: mcc3@eagle-enviro.com

Project Manager: Martin Eckert III
Project Name: UPRC #27-9F Tank Battery
Project Number: -
Samples Collected By: BDW

Sample ID Description	Date Sampled	Time Sampled	# of Containers	Preservative			Matrix			Analysis			Sample Instructions	
				Unpreserved	HCl	HNO ₃	Other	Groundwater	Soil	Air Summa	Other	PH		As
Background - 01 02 31	1-24-22	1035	2	X						X				See pH = Schmitt test
														2
														3
														4
														5
														6
														7
														8
														9
														10

Relinquished By: [Signature] Date: 2/7/22 Time: 1448

Relinquished By: [Signature] Date: 2/7/22 Time: 1448

Turnaround Time: Same Day ☐ 24 Hr ☐ 48 Hr ☐ 72 Hr ☒ Standard

Date Results Needed: Noble
Temp Received: 0.3

Origins Laboratory, Inc.

[Signature]

The results in this report apply to the samples analyzed in accordance with the chain of custody document. This analytical report must be reproduced in its entirety.

Eagle Environmental Consulting, Inc.
8000 W 44th Ave
Wheat Ridge CO 80033

Martin C Eckert III
Project Number: [none]
Project: Noble - UPRC #27-9F Tank Battery

Origins Laboratory

F-012207-01-R1
Effective Date: 01/09/12

Sample Receipt Checklist

Origins Work Order: 4202113

Client: Eagle

Client Project ID: UPRC 27-9F TB

Checklist Completed by: KAH

Shipped Via: HD

(UPS, FedEx, Hand Delivered, Pick-up, etc.)

Date/time completed: 2/7/12

Airbill #: NA

Matrix(s) Received: (Check all that apply): / Soil/Solid Water Other:

Cooler Number/Temperature: 1 10.5 °C °C °C (Describe) °C

Thermometer ID: 7003

Requirement Description	Yes	No	N/A	Comments (if any)
If samples require cooling, was the temperature between 0°C to ≤ 6°C ⁽¹⁾ ?	<u>—</u>			
Is there ice present (document if blue ice is used)	<u>—</u>			
Are custody seals present on cooler? (if so, document in comments if they are signed and dated, broken or intact)		<u>—</u>		
Are custody seals present on each sample container? (if so, document in comments if they are signed and dated, broken or intact)		<u>—</u>		
Were all samples received intact ⁽¹⁾ ?	<u>—</u>			
Was adequate sample volume provided ⁽¹⁾ ?	<u>—</u>			
Are short holding time analytes or samples with HTs due within 48 hours present ⁽¹⁾ ?		<u>—</u>		
Is a chain-of-custody (COC) present and filled out completely ⁽¹⁾ ?	<u>—</u>			
Does the COC agree with the number and type of sample bottles received ⁽¹⁾ ?	<u>—</u>			
Do the sample IDs on the bottle labels match the COC ⁽¹⁾ ?	<u>—</u>			
Is the COC properly relinquished by the client with date and time recorded ⁽¹⁾ ?	<u>—</u>			
For volatiles in water – is there headspace (> ¼ inch bubble) present? If yes, contact client and note in narrative.			<u>—</u>	
Are samples preserved that require preservation and was it checked ⁽¹⁾ ? (note ID of confirmation instrument used in comments) / (preservation is not confirmed for subcontracted analyses in order to insure sample integrity) (pH < 2 for samples preserved with HNO ₃ , HCL, H ₂ SO ₄) / (pH > 10 for samples preserved with NaAsO ₂ +NaOH, ZnAc+NaOH)			<u>—</u>	
Additional Comments (if any):				

⁽¹⁾If NO, then contact the client before proceeding with analysis and note date/time and person contacted as well as the corrective action to in the additional comments (above) and the case narrative.

Reviewed by (Project Manager) jm

2-8-22
Date/Time Reviewed

Origins Laboratory, Inc.

The results in this report apply to the samples analyzed in accordance with the chain of custody document. This analytical report must be reproduced in its entirety.

Eagle Environmental Consulting, Inc.
8000 W 44th Ave
Wheat Ridge CO 80033

Martin C Eckert III
Project Number: [none]
Project: Noble - UPRC #27-9F Tank Battery

Background-01@3'**1/24/2022 10:35:00AM**

Analyte	Result	Min Detection Limit	Reporting Limit	Units	Dilution	Batch	Prepared	Analyzed	Notes
---------	--------	------------------------	--------------------	-------	----------	-------	----------	----------	-------

Origins Laboratory, Inc.
Y202113-01 (Soil)**Metals by Saturated Paste by EPA 6010**

Calcium	3.73	0.499	meq/L	10	[CALC]	02/08/2022	02/09/2022
Magnesium	1.55	0.823	"	"	"	"	"
Sodium	4.98	0.435	"	"	"	"	"

pH in Soil by 9045D

pH	7.49		pH Units	1	B2B0805	02/08/2022	02/09/2022
----	------	--	----------	---	---------	------------	------------

SAR by 20B Saturated Paste

SAR	3.07		SAR	1	B2B0802	02/08/2022	02/09/2022
-----	------	--	-----	---	---------	------------	------------

Total Metals by 6020B

Arsenic	1.39	0.0855	0.25	mg/Kg	5	L598378	02/09/2022	02/14/2022
Selenium	0.326	0.103	0.25	"	"	"	"	"

Origins Laboratory, Inc.



The results in this report apply to the samples analyzed in accordance with the chain of custody document. This analytical report must be reproduced in its entirety.

Eagle Environmental Consulting, Inc.
8000 W 44th Ave
Wheat Ridge CO 80033

Martin C Eckert III
Project Number: [none]
Project: Noble - UPRC #27-9F Tank Battery

Saturated Paste - Quality Control
Origins Laboratory, Inc.

Analyte	Result	Reporting Limit	Units	Spike Level	Source Result	%REC	%REC Limits	RPD	RPD Limit	Notes
---------	--------	-----------------	-------	-------------	---------------	------	-------------	-----	-----------	-------

Batch B2B0805 - NO PREP

Duplicate (B2B0805-DUP1)

Source: Y202085-04

Prepared: 02/08/2022 Analyzed: 02/09/2022

pH	8.46		pH Units	8.49		0.354	25
----	------	--	----------	------	--	-------	----

Origins Laboratory, Inc.



The results in this report apply to the samples analyzed in accordance with the chain of custody document. This analytical report must be reproduced in its entirety.

Eagle Environmental Consulting, Inc.
8000 W 44th Ave
Wheat Ridge CO 80033

Martin C Eckert III
Project Number: [none]
Project: Noble - UPRC #27-9F Tank Battery

Total Metals by 6020B - Quality Control Waypoint Analytical, LLC.

Analyte	Result	Reporting Limit	Units	Spike Level	Source Result	%REC	%REC Limits	RPD	RPD Limit	Notes
Batch L598378 - 3050B										
MSD (L 99150-MSD-L598378)			Source: 99150		Prepared: 02/09/2022 Analyzed: 02/16/2022					
Selenium	3.72	0.103	mg/Kg	4.95	0.803	59	75-125	1.6	80	*
Arsenic	8.83	0.0855	"	2.48	4.44	177	75-125	18.2	80	*
MS (L 99150-MS-L598378)			Source: 99150		Prepared: 02/09/2022 Analyzed: 02/16/2022					
Selenium	3.78	0.103	mg/Kg	4.73	0.803	63	75-125			*
Arsenic	7.35	0.0855	"	2.37	4.44	123	75-125			
LCS (LCS-L598378)			Prepared: 02/09/2022 Analyzed: 02/14/2022							
Selenium	5.52	0.103	mg/Kg	5		110	80-120			
Arsenic	2.62	0.0855	"	2.5		105	80-120			
LRB (LRB-L598378)			Prepared: 02/09/2022 Analyzed: 02/16/2022							
Selenium	ND	0.25	mg/Kg				-			
Arsenic	ND	0.25	"				-			

Origins Laboratory, Inc.

The results in this report apply to the samples analyzed in accordance with the chain of custody document. This analytical report must be reproduced in its entirety.

Eagle Environmental Consulting, Inc.

8000 W 44th Ave

Wheat Ridge CO 80033

Martin C Eckert III

Project Number: [none]

Project: Noble - UPRC #27-9F Tank Battery

Notes and Definitions

* QC Failure

ND Analyte NOT DETECTED at or above the reporting limit

RPD Relative Percent Difference

All soil results are reported on a wet weight basis.

Origins Laboratory, Inc.



The results in this report apply to the samples analyzed in accordance with the chain of custody document. This analytical report must be reproduced in its entirety.