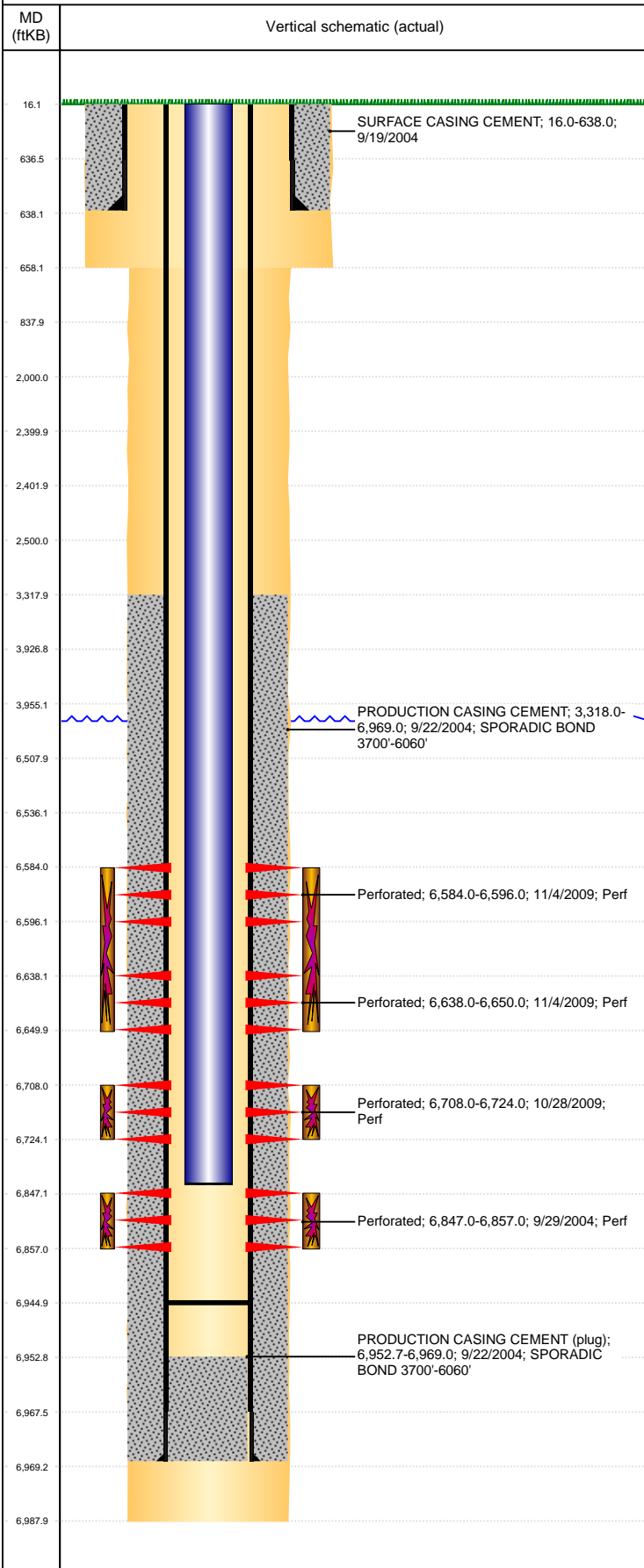


Well Name: ABBEY D01-06

VERTICAL, ORIGINAL HOLE, 2/22/2022 12:52:23 PM



Well Header										
API 05-123-22184		Business Unit DJ BASIN			District 15		Well Config VERTICAL			
KB - GL / MSL (ft... 16.00		Spud Date 9/18/2004		P & A Date		Well Production Status PR			SoRT No	
Comment										
Surface Location (Congressional)										
Qtr 3 SE	Qtr 4 NW	Section 1	Twnshp 3	Twnsh... N	Range 64	Rng E/... W	Actual Latitude (°) 40.25599109		Actual Longitude (°) -104.50161084	
Wellbore Sections										
Section Des			Size (in)			Act Top, MD (ftKB)		Act Btm, MD (ftKB)		
SURFACE			12 1/4			16		658		
PRODUCTION			7 7/8			658		6,988		
Casing Strings										
Csg Des			Run Date		OD (in)	Wt/Len (lb/ft)	Grade	Top, MD (ftKB)	MD (ftKB)	
Surface			9/19/2004		8 5/8	24.00		16.0	638.0	
Production			9/22/2004		4 1/2	11.60	M-80	16.0	6,969.0	
Cement										
Des					Start Date		Top (ftKB)		Btm (ftKB)	
SURFACE CASING CEMENT					9/19/2004		16.0		638.0	
PRODUCTION CASING CEMENT					9/22/2004		3,318.0		6,969.0	
Zone Statuses										
Zone Name		Status Date	Status	Fluid Type	Job				Prod Method	
CODELL		10/28/2009	SI		RECOMPLETION, 10/27/2009 06:00					
CODELL		11/20/2009	PR		RECOMPLETION, 10/27/2009 06:00					
NIOBRARA		11/20/2009	PR		RECOMPLETION, 10/27/2009 06:00					
NIOBRARA		10/26/2017	PR							
Perforation Data										
Linked Zone			Bnch/Stg	Entered Shot Total	Top (ftKB)		Btm (ftKB)		Date	
NIOBRARA, ORIGINAL HOLE			A	24	6,584.00		6,596.00		11/4/2009	
NIOBRARA, ORIGINAL HOLE			B	24	6,638.00		6,650.00		11/4/2009	
NIOBRARA, ORIGINAL HOLE			C	32	6,708.00		6,724.00		10/28/2009	
CODELL, ORIGINAL HOLE				40	6,847.00		6,857.00		9/29/2004	
Stimulation Intervals										
Zone				Start Date		Top (ftKB)		Btm (ftKB)		
NIOBRARA, ORIGINAL HOLE				11/4/2009		6,584.0		6,650.0		
NIOBRARA, ORIGINAL HOLE				11/4/2009		6,708.0		6,724.0		
CODELL, ORIGINAL HOLE				10/5/2004		6,847.0		6,857.0		
Other In Hole										
Run Date		Des			Make		OD (in)	Top (ftKB)	Btm (ftKB)	
Logs										
Date		Type					Top, MD (ftKB)		Btm, MD (ftKB)	
9/22/2004		COMPENSATED DENSITY					4,200.0		6,965.0	
9/22/2004		DIFL/DENS/GR/GRD/CAL					638.0		6,985.0	
9/29/2004		CBL/CCL/GR					3,100.0		6,875.0	
Plug Back Total Depths										
Date		Type			Com					Depth (ftKB)
11/16/2009		FILL								6,655.0
11/17/2009		PLUG REMNANTS			88' OF RAT HOLE					6,945.0