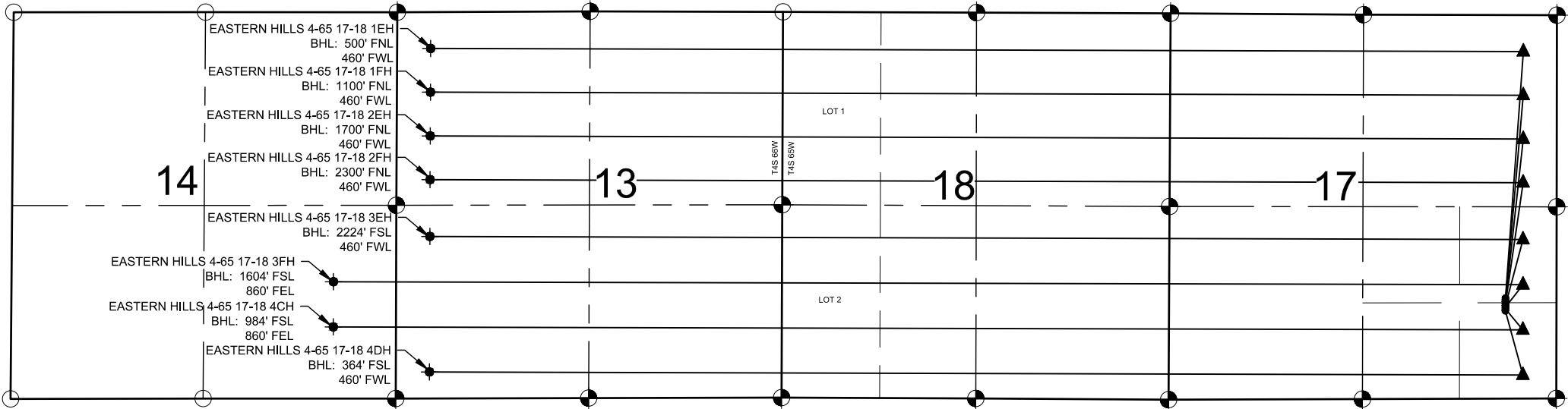


EASTERN HILLS 4-65 17-18 3AH PAD
DIRECTIONAL WELL PLAT

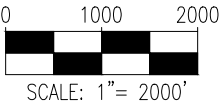
NOTES:

1. THIS FIELD SURVEY CONFORMS TO THE MINIMUM STANDARDS SET BY THE COGCC, RULE NO. 215
2. ALL DISTANCES AND BEARINGS SHOWN HEREON ARE GROUND VALUES AS GPS MEASURED IN THE FIELD, WITH TIES TO WELLS MEASURED PERPENDICULAR TO LINES SHOWN HEREON. THIS LOW DISTORTION PROJECTION (LDP) IS BASED ON THE NORTH AMERICAN DATUM OF 1983, U.S. SURVEY FOOT WITH A LATITUDE ORIGIN OF 39.696714°N, A CENTRAL MERIDIAN LONGITUDE OF 104.659538°W, AND A SCALE FACTOR ON THE CENTRAL MERIDIAN OF 1.000269 (EXACT). THE LDP BASIS OF BEARINGS IS GEODETIC NORTH.
3. FIELD VERIFICATION OF MONUMENTS COMPLETED WITHIN 1 YEAR OF SIGNATURE DATE, UNLESS OTHERWISE NOTED.



NOTES:

- EASTERN HILLS 4-65 17-18 1EH TO BE AT 1380' FSL & 700' FEL.
BOTTOM HOLE AT 500' FNL & 460' FWL, SEC. 13, T4S, R66W.
EASTERN HILLS 4-65 17-18 1FH TO BE AT 1355' FSL & 700' FEL.
BOTTOM HOLE AT 1100' FNL & 460' FWL, SEC. 13, T4S, R66W.
EASTERN HILLS 4-65 17-18 2EH TO BE AT 1330' FSL & 700' FEL.
BOTTOM HOLE AT 1700' FNL & 460' FWL, SEC. 13, T4S, R66W.
EASTERN HILLS 4-65 17-18 2FH TO BE AT 1305' FSL & 700' FEL.
BOTTOM HOLE AT 2300' FNL & 460' FWL, SEC. 13, T4S, R66W.
EASTERN HILLS 4-65 17-18 3EH TO BE AT 1280' FSL & 700' FEL.
BOTTOM HOLE AT 2224' FSL & 460' FWL, SEC. 13, T4S, R66W.
EASTERN HILLS 4-65 17-18 3FH TO BE AT 1255' FSL & 700' FEL.
BOTTOM HOLE AT 1604' FSL & 860' FEL, SEC. 14, T4S, R66W.
EASTERN HILLS 4-65 17-18 4CH TO BE AT 1230' FSL & 700' FEL.
BOTTOM HOLE AT 984' FSL & 860' FEL, SEC. 14, T4S, R66W.
EASTERN HILLS 4-65 17-18 4DH TO BE AT 1205' FSL & 700' FEL.
BOTTOM HOLE AT 364' FSL & 460' FWL, SEC. 13, T4S, R66W.



LEGEND

- = EXISTING MONUMENT
- = CALCULATED POSITION
- = PROPOSED WELL
- ⬮ = BOTTOM HOLE
- ▲ = TOP OF PRODUCTION ZONE
- ◆ = EXISTING WELL
- BHL = BOTTOM HOLE



8620 Wolff Court
Westminster, CO 80031
(303) 928-7128
www.ascentgeomatics.com

FIELD DATE:
04-24-18

DRAWING DATE:
11-29-21

BY:
CSG

CHECKED:
IJM

WELL NAME:
EASTERN HILLS 4-65 17-18 3AH PAD

SURFACE LOCATION:
E 1/2 SE 1/4 SEC. 17, T4S, R65W, 6TH P.M.
ARAPAHOE COUNTY, COLORADO

PREPARED FOR:

