

# Vision Energy, LLC

<b>WELL NAME</b>	Calf Canyon 11-4A
<b>LOCATION</b>	SESW Sec 25 T8S R98W 6 PM
<b>GPS</b>	39.547214, -108.739536
<b>PDOP</b>	
<b>GPS OPERATOR</b>	Gary Berschauer
<b>DATE</b>	1/26/1981
<b>FEDERAL LEASE No.</b>	COC 10378

<b>FIELD</b>	Calf Canyon 9670
<b>COUNTY</b>	Garfield
<b>API #</b>	05-045-06405
<b>FORMATION</b>	Dakota
<b>COGCC LOCATION ID</b>	
<b>COGCC FACILITY ID</b>	322502
<b>ELEVATION</b>	6391'

## CASING

### CONDUCTOR

SIZE & WT	13 3/8" 48#
SET @	80'
HOLE SIZE	18"
CEMENT	45 sxs Class
G w/ 2% CaCl	
TOC @ surface 0	

### SURFACE

SIZE & WT	8 5/8" 24#
SET @	900'
HOLE SIZE	12 1/4"
CEMENT	500 sxs Class G
w/ 2% CaCl	
TOC @ 0	

### PRODUCTION

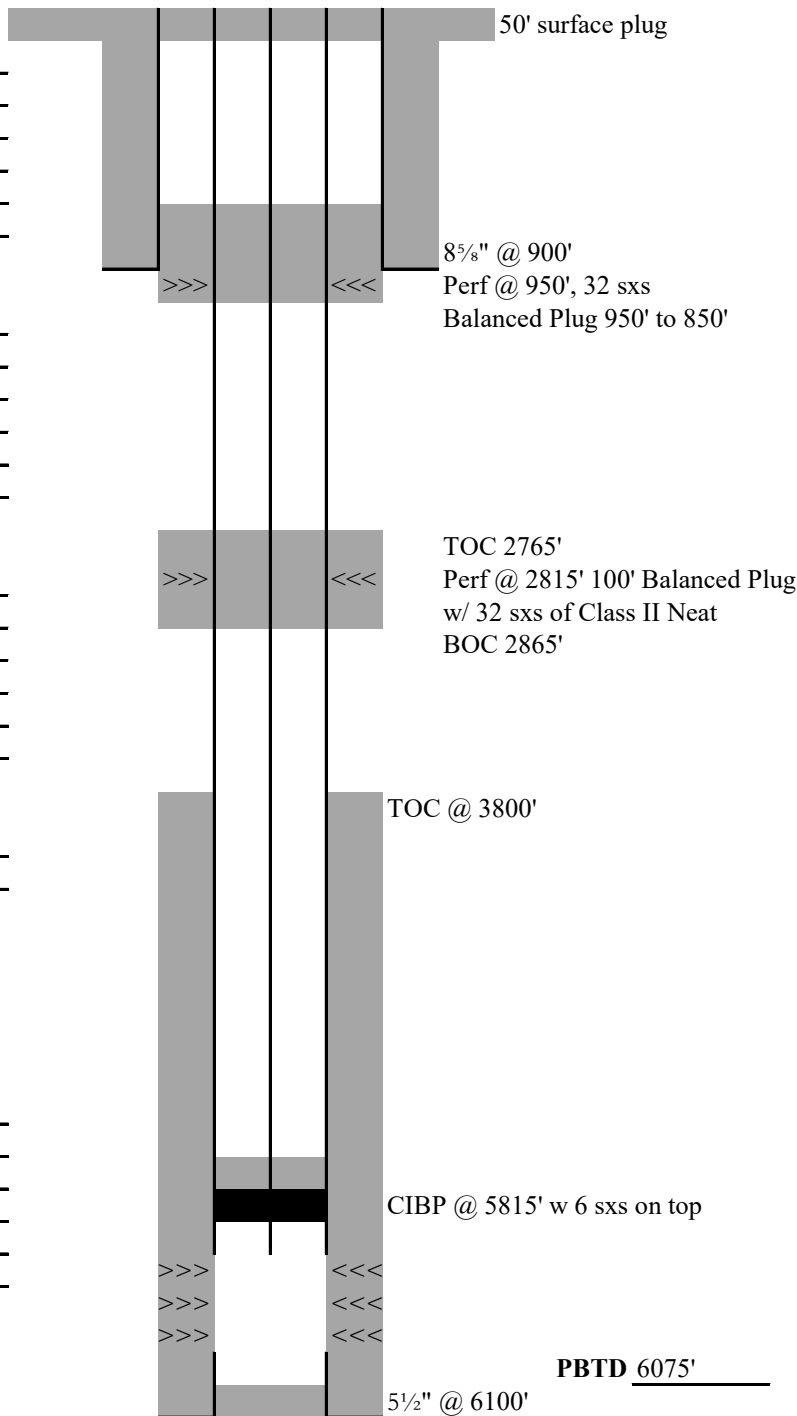
SIZE & WT	5 1/2" 17#
SET @	6100'
HOLE SIZE	7 7/8"
CEMENT	275 sxs 60/40,
45 sxs RFC-2	10% CAL-seal
TOC @ 3800'	

### PERFORATIONS

5863' - 5892'	11 holes
---------------	----------

### FORMATION TOPS

Mesaverde	Surface
Castlegate	1750'
Mancos	3835'
Frontier	5512'
Dakota Silt	5790'
Dakota	5863'



**TOTAL DEPTH** 6100'