

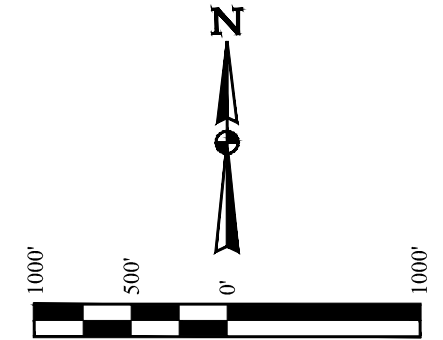
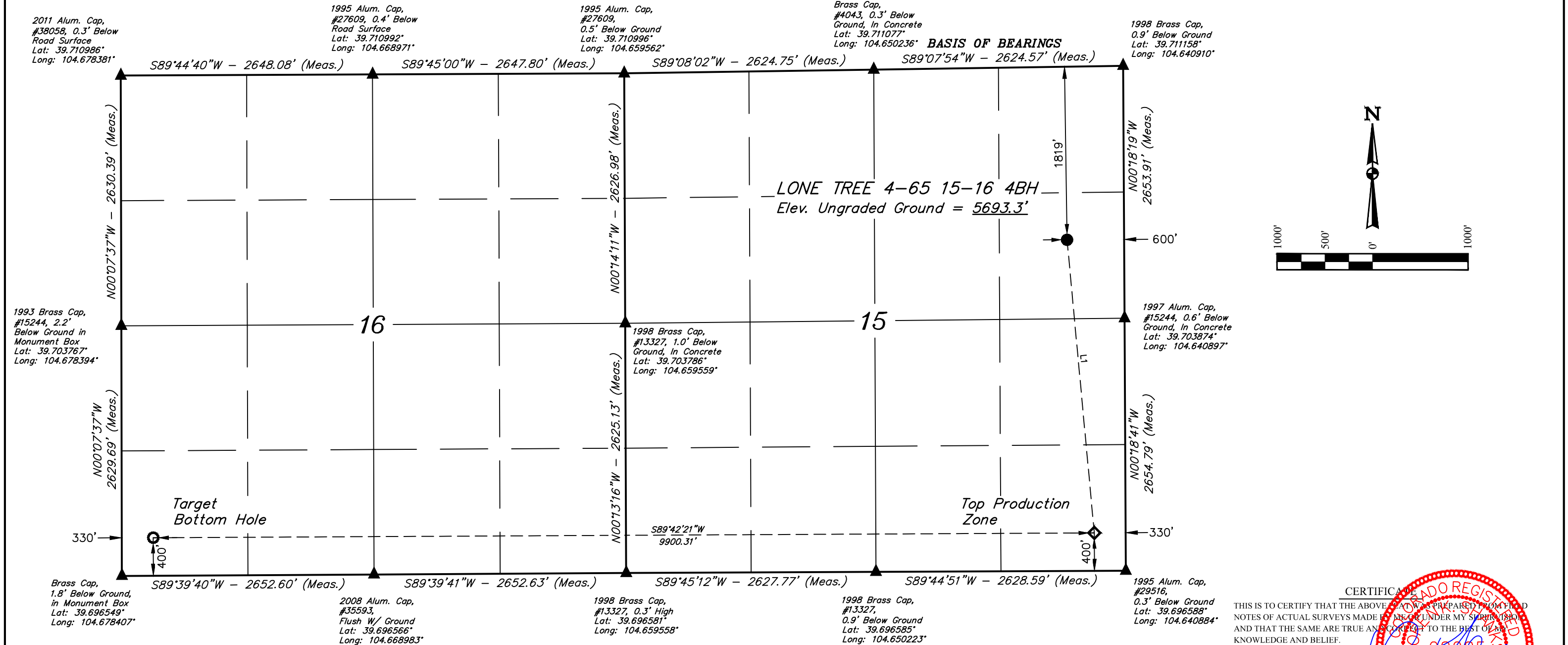
T4S, R65W, 6th P.M.

CRESTONE PEAK RESOURCES OPERATING LLC

LONE TREE 4-65 15-16 4BH
SE 1/4 NE 1/4, SECTION 15, T4S, R65W, 6th P.M.
ARAPAHOE COUNTY, COLORADO

LINE TABLE		
LINE	DIRECTION	LENGTH
L1	S05°18'38"E	3094.95'

BASIS OF ELEVATION
OPUS SOLUTION GENERATED NAVD 88



NOTE:
Distances referenced on plat to section lines are perpendicular.

LEGEND:

- = PROPOSED WELLHEAD.
- ◆ = TOP PRODUCTION ZONE.
- = TARGET BOTTOM HOLE.
- ▲ = SECTION CORNERS LOCATED. (NAD 83)

PDOP = 1.2

NAD 83 (SURFACE LOCATION)	NAD 83 (TOP PRODUCTION ZONE)	NAD 83 (TARGET BOTTOM HOLE)
LATITUDE = 39°42'22.13" (39.706146°)	LATITUDE = 39°41'51.67" (39.697686°)	LATITUDE = 39°41'51.54" (39.697649°)
LONGITUDE = 104°38'34.92" (104.643032°)	LONGITUDE = 104°38'31.41" (104.642058°)	LONGITUDE = 104°40'38.04" (104.677233°)
NAD 27 (SURFACE LOCATION)	NAD 27 (TOP PRODUCTION ZONE)	NAD 27 (TARGET BOTTOM HOLE)
LATITUDE = 39°42'22.17" (39.706159°)	LATITUDE = 39°41'51.71" (39.697698°)	LATITUDE = 39°41'51.58" (39.697662°)
LONGITUDE = 104°38'33.03" (104.642508°)	LONGITUDE = 104°38'29.52" (104.641534°)	LONGITUDE = 104°40'36.15" (104.676707°)
STATE PLANE NAD 83 (CO. CEN.)	STATE PLANE NAD 83 (CO. CEN.)	STATE PLANE NAD 83 (CO. CEN.)
N: 1683230.27' E: 3241111.06'	N: 1680150.98' E: 3241414.24'	N: 1680046.15' E: 3231516.96'
STATE PLANE NAD 27 (CO. CEN.)	STATE PLANE NAD 27 (CO. CEN.)	STATE PLANE NAD 27 (CO. CEN.)
N: 683222.70' E: 2241264.70'	N: 680143.46' E: 2241567.93'	N: 680038.47' E: 2231670.73'

CERTIFICATE OF REGISTRATION
THIS IS TO CERTIFY THAT THE ABOVE PLAT WAS PREPARED FROM FIELD NOTES OF ACTUAL SURVEYS MADE BY ME OR UNDER MY SUPERVISION AND THAT THE SAME ARE TRUE AND CORRECT TO THE BEST OF MY KNOWLEDGE AND BELIEF.

Greg Weimer
REGISTERED LAND SURVEYOR
REGISTRATION NO. 28285
STATE OF COLORADO
SPECIAL LAND SURVEY 17-20

UINTAH
ENGINEERING & LAND SURVEYING

WELL LOCATION PLAT

UELS, LLC
Corporate Office * 85 South 200 East
Vernal, UT 84078 * (435) 789-1017

SURVEYED BY	GREG WEIMER, N.W.	06-05-20	SCALE
DRAWN BY	C.IVIE	07-17-20	1" = 1000'