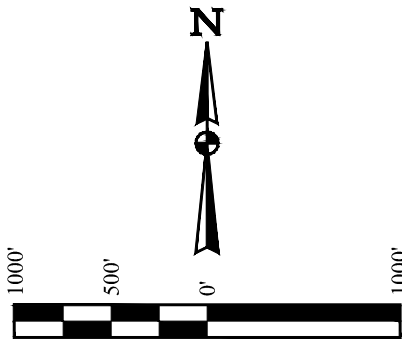
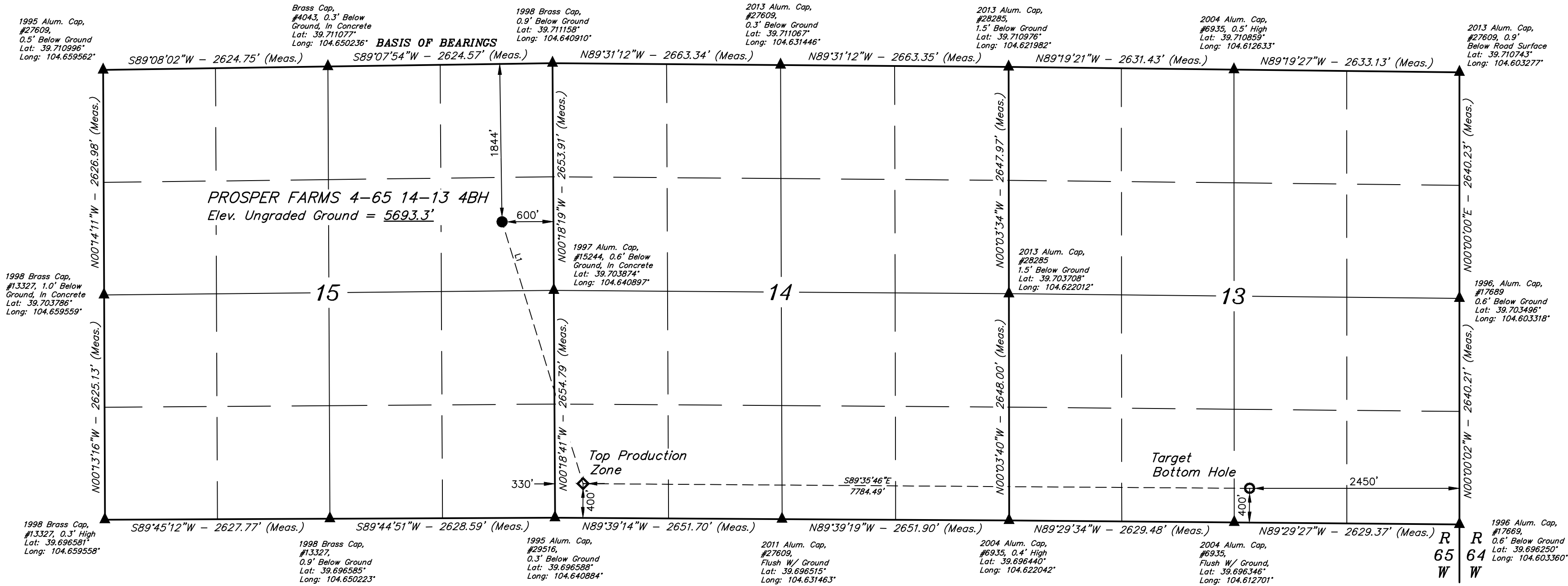


PROSPER FARMS 4-65 14-13 4BH
SE 1/4 NE 1/4, SECTION 15, T4S, R65W, 6th P.M.
ARAPAHOE COUNTY, COLORADO

BASIS OF ELEVATION
OPUS SOLUTION GENERATED NAVD 88



LINE TABLE		
LINE	DIRECTION	LENGTH
L1	S17°11'58"E	3200.29'



NOTE:
Distances referenced
on plat to section lines
are perpendicular.

LEGEND:

- = PROPOSED WELLHEAD.
- ◆ = TOP PRODUCTION ZONE.
- = TARGET BOTTOM HOLE.
- ▲ = SECTION CORNERS LOCATED. (NAD 83)

PDOP = 1.2		
NAD 83 (SURFACE LOCATION)	NAD 83 (TOP PRODUCTION ZONE)	NAD 83 (TARGET BOTTOM HOLE)
LATITUDE = 39°42'21.88" (39.706078°)	LATITUDE = 39°41'51.64" (39.697677°)	LATITUDE = 39°41'50.77" (39.697437°)
LONGITUDE = 104°38'34.92" (104.643032°)	LONGITUDE = 104°38'22.97" (104.639713°)	LONGITUDE = 104°36'43.41" (104.612058°)
NAD 27 (SURFACE LOCATION)	NAD 27 (TOP PRODUCTION ZONE)	NAD 27 (TARGET BOTTOM HOLE)
LATITUDE = 39°42'21.93" (39.706091°)	LATITUDE = 39°41'51.68" (39.697690°)	LATITUDE = 39°41'50.82" (39.697450°)
LONGITUDE = 104°38'33.03" (104.642508°)	LONGITUDE = 104°38'21.08" (104.639189°)	LONGITUDE = 104°36'41.53" (104.611535°)
STATE PLANE NAD 83 (CO. CEN.)	STATE PLANE NAD 83 (CO. CEN.)	STATE PLANE NAD 83 (CO. CEN.)
N: 1683205.28' E: 3241111.34'	N: 1680154.07' E: 3242074.08'	N: 1680141.65' E: 3249856.60'
STATE PLANE NAD 27 (CO. CEN.)	STATE PLANE NAD 27 (CO. CEN.)	STATE PLANE NAD 27 (CO. CEN.)
N: 683197.71' E: 2241264.99'	N: 680146.55' E: 2242227.76'	N: 680134.26' E: 2250010.22'

CERTIFICATE OF REGISTRATION
THIS IS TO CERTIFY THAT THE ABOVE DESCRIBED SURVEY WAS PREPARED AND CONDUCTED IN ACCORDANCE WITH THE RULES AND REGULATIONS OF THE BOARD OF SURVEYING AND MAPPING, ARAPAHOE COUNTY, COLORADO, AND THAT THE SAME ARE TRUE AND CORRECT TO THE BEST OF MY KNOWLEDGE AND BELIEF.

REGISTERED LAND SURVEYOR
REGISTRATION NO. 28285
STATE OF COLORADO
JULY 12, 2020

UINTEAH
ENGINEERING & LAND SURVEYING

UELS, LLC
Corporate Office * 85 South 200 East
Vernal, UT 84078 * (435) 789-1017

SURVEYED BY GREG WEIMER, N.W.
DRAWN BY C. IVIE

06-05-20
07-17-20

SCALE
1" = 1000'

WELL LOCATION PLAT