

CONFLUENCE RESOURCES



Location:	COLORADO	Slot:	SLOT#12 Flaherty 13-14-3 (295°FSL & 1784°FWL,SEC.18)
Field:	WELD COUNTY (NAD83, TRUE NORTH)	Well:	Flaherty 13-14-3
Facility:	SEC.18-T04N-R62W	Wellbore:	Flaherty 13-14-3 PWB
Plot reference wellpath is Flaherty 13-14-3 PWP Rev-A.0		Grid System: NAD83 / Lambert Colorado SP, Northern Zone (501), US feet	
True vertical depths are referenced to Rig (23) (KB)		North Reference: True north	
Reference wellpath measured depths are referenced to Rig (23) (KB)		Scale: True distance	
Rig (23) (KB) to Mean Sea Level: 4586 feet		Coordinates are in feet referenced to Slot	
Mean Sea Level to Mud line (At Slot: SLOT#12 Flaherty 13-14-3 (295°FSL & 1784°FWL,SEC.18)): 0 feet		Depths are in feet	
Offset wellpath MDs are referenced to each path's default MD datum		Created by: pairsnet on 2021-12-02; Database: WellArchitect:DB	

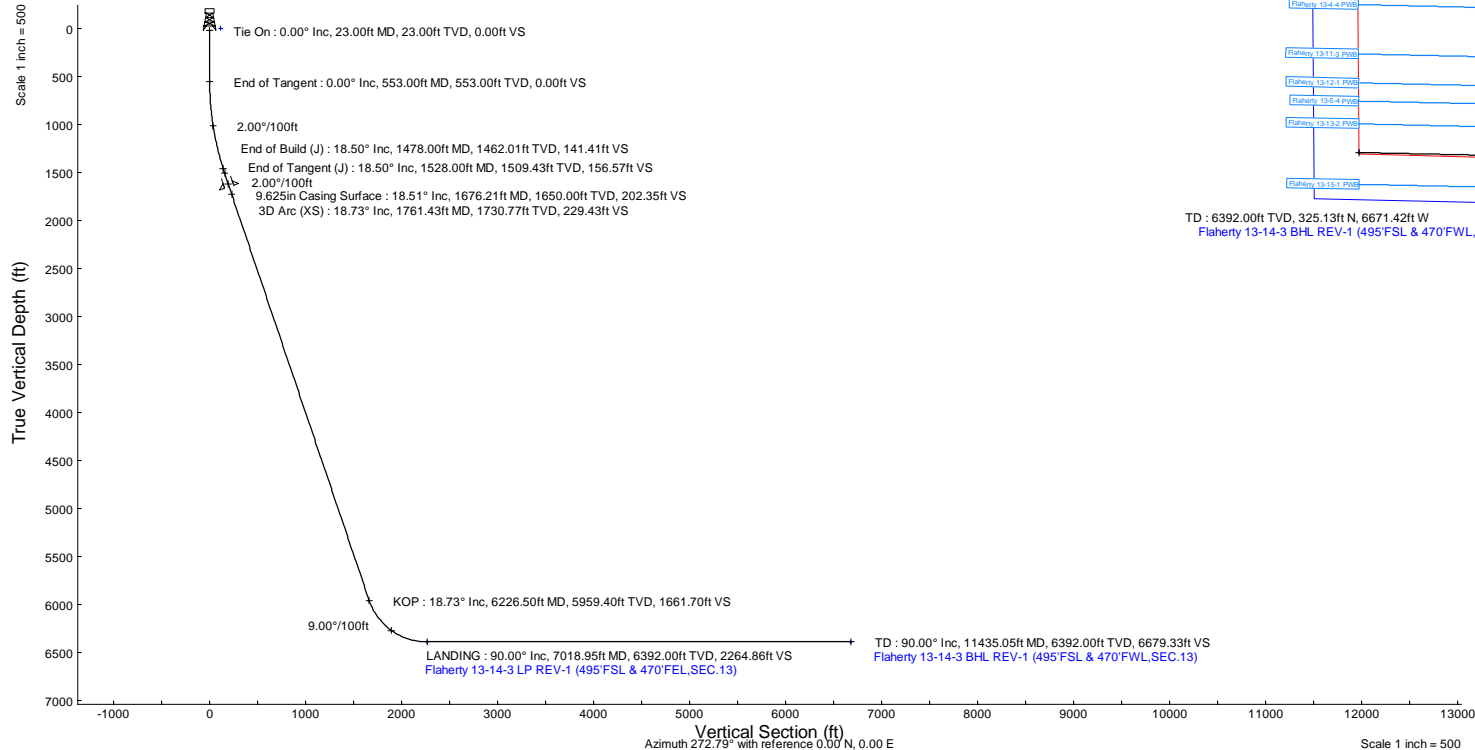
Location Information					
Facility Name		Grid East (US ft)	Grid North (US ft)	Latitude	Longitude
SEC.18-T04N-R62W		3314967.040	1356246.051	40.3057900°	-104.3706400°
Slot	Local N (ft)	Local E (ft)	Grid East (US ft)	Grid North (US ft)	Latitude
SLOT#12 Flaherty 13-14-3 (295°FSL & 1784°FWL,SEC.18)	72.86	136.67	3315102.760	1356320.644	40.3059900°
Rig (23) (KB) to Mud line (At Slot: SLOT#12 Flaherty 13-14-3 (295°FSL & 1784°FWL,SEC.18))					4586ft
Mean Sea Level to Mud line (At Slot: SLOT#12 Flaherty 13-14-3 (295°FSL & 1784°FWL,SEC.18))					0ft
Rig (23) (KB) to Mean Sea Level					4586ft

Hole and Casing Sections										
Name	Start MD (ft)	End MD (ft)	Interval (ft)	Start TVD (ft)	End TVD (ft)	Start Local N (ft)	Start Local E (ft)	End Local N (ft)	End Local E (ft)	Wellbore
9.625in Casing Surface	23.00	1676.21	1653.21	23.00	1650.00	0.00	0.00	68.45	-199.25	Flaherty 13-14-3 PWB

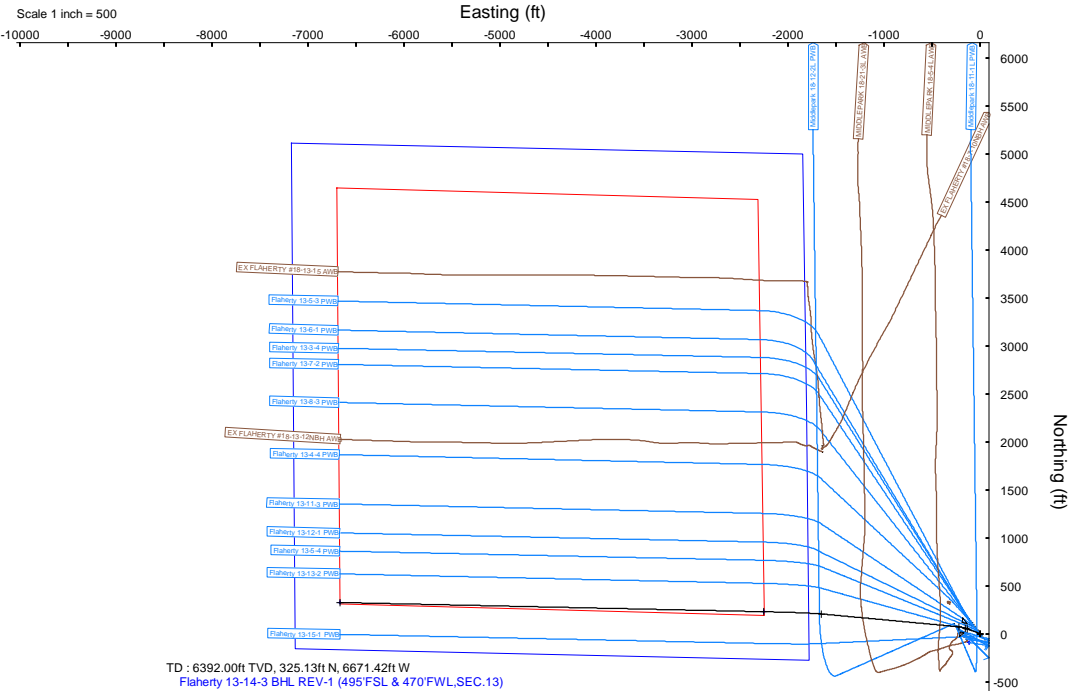
Survey Program					
Start MD (ft)	End MD (ft)	Tool		Model	Log Name/Comment
23.00	1676.21	BH NavTrak (2019)		BH NavTrak (2019) (Axial)	Flaherty 13-14-3 PWB
1676.21	11435.05	BH AutoTrak Curve/xpress (2019)		BH AutoTrak Curve/xpress (2019) (Short spacing)	Flaherty 13-14-3 PWB

Bottom Hole Location									
MD (ft)	Inc (°)	Az (°)	TVD (ft)	Local N (ft)	Local E (ft)	Grid East (US ft)	Grid North (US ft)	Latitude	Longitude
11435.05	90.000	271.239	6392.00	325.13	-6671.42	3308428.04	1356560.74	40.3068800°	-104.3940700°

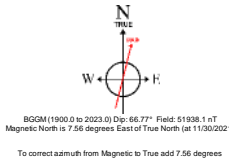
Targets									
Name	MD (ft)	TVD (ft)	Local N (ft)	Local E (ft)	Grid East (US ft)	Grid North (US ft)	Latitude	Longitude	
SEC.13-T04N-R63W	N/A	0.00	-91.08	-119.93	3314984.00	1356228.05	40.3057400°	-104.3705800°	
SEC.13-T04N-R63W (SB 470)	N/A	0.00	-91.08	-119.93	3314984.00	1356228.05	40.3057400°	-104.3705800°	
Flaherty 13-14-3 BHL REV-1 (495°FSL & 470°FWL,SEC.13)	11435.05	6392.00	325.13	-6671.42	3308428.04	1356560.74	40.3068800°	-104.3940700°	
Flaherty 13-14-3 LP REV-1 (495°FSL & 470°FEL,SEC.13)	7018.95	6392.00	229.62	-2256.35	3312843.77	1356521.48	40.3066200°	-104.3782400°	



Well Profile Data							
Design Comment	MD (ft)	Inc (°)	Az (°)	TVD (ft)	Local N (ft)	Local E (ft)	VS (ft)
Tie On	23.00	0.000	290.000	23.00	0.00	0.00	0.00
End of Tangent	553.00	0.000	290.000	553.00	0.00	0.00	0.00
End of Build (J)	1478.00	18.500	290.000	1462.01	50.63	-139.11	141.41
End of Tangent (J)	1528.00	18.500	290.000	1509.43	56.06	-154.02	156.57
3D Arc (XS)	1761.43	18.729	275.355	1730.77	72.23	-226.18	229.43
KOP	6226.50	18.729	275.355	5959.40	206.05	-1653.63	1661.70
LANDING	7018.95	90.000	271.239	6392.00	229.62	-2256.35	2264.86
TD	11435.05	90.000	271.239	6392.00	325.13	-6671.42	6679.33



Flaherty 13-14-3 LP REV-1 (495°FSL & 470°FEL,SEC.13)
LANDING : 6392.00ft TVD, 229.62ft N, 2256.35ft W
KOP : 5959.40ft TVD, 206.05ft N, 1653.63ft W
9.625in Casing Surface : 1650.00ft TVD, 68.45ft N, 199.25ft W
Tie On : 23.00ft TVD, 0.00ft N, 0.00ft E
SLOT#12 Flaherty 13-14-3 (295°FSL & 1784°FWL,SEC.18)



BGGM (1900.0 to 2023.0) Dip: 66.77° Field: 51938.1 nT
Magnetic North is 7.56 degrees East of True North (at 11/30/2021)
To correct azimuth from Magnetic to True add 7.56 degrees

Planned Wellpath Report

Flaherty 13-14-3 PWP Rev-A.0

Page 1 of 8

REFERENCE WELLPATH IDENTIFICATION

Operator	CONFLUENCE RESOURCES	Well	Flaherty 13-14-3
Field	WELD COUNTY (NAD83, TRUE NORTH)	API	0512347462
Facility	SEC.18-T04N-R62W	Wellbore	Flaherty 13-14-3 PWB
Slot	SLOT#12 Flaherty 13-14-3 (295'FSL & 1784'FWL,SEC.18)		

REPORT SETUP INFORMATION

Projection System	NAD83 / Lambert Colorado SP, Northern Zone (501), US feet	Software System	WellArchitect® 6.0
North Reference	True	User	Painsetr
Scale	0.999957	Report Generated	12/2/2021 at 11:46:17 AM
Convergence at slot	0.73° East	Database	WellArchitectDB

WELLPATH LOCATION

	Local coordinates		Grid coordinates		Geographic coordinates	
	North[ft]	East[ft]	Easting[US ft]	Northing[US ft]	Latitude	Longitude
Slot Location	72.86	136.67	3315102.76	1356320.64	40.3059900°	-104.3701500°
Facility Reference Pt			3314967.04	1356246.05	40.3057900°	-104.3706400°
Field Reference Pt			3230456.90	1245096.09	40.0032400°	-104.6773400°

WELLPATH DATUM

Calculation method	Minimum curvature	Rig (23') (KB) to Facility Vertical Datum	4586.00ft
Horizontal Reference Pt	Slot	Rig (23') (KB) to Mean Sea Level	4586.00ft
Vertical Reference Pt	Rig (23') (KB)	Rig (23') (KB) to Mud Line at Slot (SLOT#12 Flaherty 13-14-3 (295'FSL & 1784'FWL,SEC.18))	4586.00ft
MD Reference Pt	Rig (23') (KB)	Section Origin	N 0.00, E 0.00 ft
Field Vertical Reference	Mean Sea Level	Section Azimuth	272.79°

Planned Wellpath Report

Flaherty 13-14-3 PWP Rev-A.0

Page 2 of 8

REFERENCE WELLPATH IDENTIFICATION

Operator	CONFLUENCE RESOURCES	Well	Flaherty 13-14-3
Field	WELD COUNTY (NAD83, TRUE NORTH)	API	0512347462
Facility	SEC.18-T04N-R62W	Wellbore	Flaherty 13-14-3 PWB
Slot	SLOT#12 Flaherty 13-14-3 (295'FSL & 1784'FWL,SEC.18)		

WELLPATH DATA (123 stations) † = interpolated, ‡ = extrapolated station

MD [ft]	Inclination [°]	Azimuth [°]	TVD [ft]	Vert Sect [ft]	North [ft]	East [ft]	Grid East [US ft]	Grid North [US ft]	Latitude	Longitude	DLS [°/100ft]	Comments
0.00†	0.000	290.000	0.00	0.00	0.00	0.00	3315102.76	1356320.64	40.3059900	-104.3701500	0.00	
23.00	0.000	290.000	23.00	0.00	0.00	0.00	3315102.76	1356320.64	40.3059900	-104.3701500	0.00	Tie On
123.00†	0.000	290.000	123.00	0.00	0.00	0.00	3315102.76	1356320.64	40.3059900	-104.3701500	0.00	
223.00†	0.000	290.000	223.00	0.00	0.00	0.00	3315102.76	1356320.64	40.3059900	-104.3701500	0.00	
323.00†	0.000	290.000	323.00	0.00	0.00	0.00	3315102.76	1356320.64	40.3059900	-104.3701500	0.00	
423.00†	0.000	290.000	423.00	0.00	0.00	0.00	3315102.76	1356320.64	40.3059900	-104.3701500	0.00	
523.00†	0.000	290.000	523.00	0.00	0.00	0.00	3315102.76	1356320.64	40.3059900	-104.3701500	0.00	
553.00	0.000	290.000	553.00	0.00	0.00	0.00	3315102.76	1356320.64	40.3059900	-104.3701500	0.00	End of Tangent
623.00†	1.400	290.000	622.99	0.82	0.29	-0.80	3315101.95	1356320.93	40.3059908	-104.3701529	2.00	
723.00†	3.400	290.000	722.90	4.82	1.72	-4.74	3315098.00	1356322.31	40.3059947	-104.3701670	2.00	
823.00†	5.400	290.000	822.60	12.14	4.35	-11.95	3315090.76	1356324.84	40.3060019	-104.3701928	2.00	
923.00†	7.400	290.000	921.97	22.79	8.16	-22.42	3315080.24	1356328.52	40.3060124	-104.3702304	2.00	
1023.00†	9.400	290.000	1020.89	36.75	13.16	-36.15	3315066.45	1356333.34	40.3060261	-104.3702796	2.00	
1123.00†	11.400	290.000	1119.25	53.99	19.33	-53.11	3315049.41	1356339.30	40.3060431	-104.3703404	2.00	
1223.00†	13.400	290.000	1216.91	74.50	26.67	-73.29	3315029.14	1356346.38	40.3060632	-104.3704128	2.00	
1323.00†	15.400	290.000	1313.76	98.25	35.18	-96.66	3315005.67	1356354.59	40.3060866	-104.3704966	2.00	
1423.00†	17.400	290.000	1409.69	125.22	44.84	-123.19	3314979.02	1356363.91	40.3061131	-104.3705917	2.00	
1478.00	18.500	290.000	1462.01	141.41	50.63	-139.11	3314963.02	1356369.50	40.3061290	-104.3706488	2.00	End of Build (J)
1523.00†	18.500	290.000	1504.69	155.05	55.52	-152.53	3314949.54	1356374.21	40.3061424	-104.3706969	0.00	
1528.00	18.500	290.000	1509.43	156.57	56.06	-154.02	3314948.04	1356374.73	40.3061439	-104.3707022	0.00	End of Tangent (J)
1623.00†	18.457	284.004	1599.54	185.72	64.85	-182.78	3314919.18	1356383.16	40.3061680	-104.3708053	2.00	
1723.00†	18.614	277.730	1694.36	217.15	70.83	-213.96	3314887.93	1356388.74	40.3061844	-104.3709171	2.00	
1761.43	18.729	275.355	1730.77	229.43	72.23	-226.18	3314875.69	1356389.99	40.3061883	-104.3709609	2.00	3D Arc (XS)
1823.00†	18.729	275.355	1789.08	249.17	74.08	-245.86	3314855.99	1356391.58	40.3061933	-104.3710315	0.00	
1923.00†	18.729	275.355	1883.78	281.25	77.07	-277.83	3314823.98	1356394.17	40.3062016	-104.3711461	0.00	
2023.00†	18.729	275.355	1978.49	313.33	80.07	-309.80	3314791.98	1356396.76	40.3062098	-104.3712608	0.00	
2123.00†	18.729	275.355	2073.19	345.41	83.07	-341.77	3314759.98	1356399.35	40.3062180	-104.3713754	0.00	
2223.00†	18.729	275.355	2167.90	377.48	86.07	-373.74	3314727.97	1356401.94	40.3062262	-104.3714900	0.00	
2323.00†	18.729	275.355	2262.60	409.56	89.06	-405.71	3314695.97	1356404.53	40.3062345	-104.3716046	0.00	
2423.00†	18.729	275.355	2357.31	441.64	92.06	-437.68	3314663.97	1356407.12	40.3062427	-104.3717193	0.00	

Planned Wellpath Report

Flaherty 13-14-3 PWP Rev-A.0

Page 3 of 8

REFERENCE WELLPATH IDENTIFICATION

Operator	CONFLUENCE RESOURCES	Well	Flaherty 13-14-3
Field	WELD COUNTY (NAD83, TRUE NORTH)	API	0512347462
Facility	SEC.18-T04N-R62W	Wellbore	Flaherty 13-14-3 PWB
Slot	SLOT#12 Flaherty 13-14-3 (295'FSL & 1784'FWL,SEC.18)		

WELLPATH DATA (123 stations) † = interpolated, ‡ = extrapolated station

MD [ft]	Inclination [°]	Azimuth [°]	TVD [ft]	Vert Sect [ft]	North [ft]	East [ft]	Grid East [US ft]	Grid North [US ft]	Latitude	Longitude	DLS [°/100ft]	Comments
2523.00†	18.729	275.355	2452.01	473.72	95.06	-469.65	3314631.96	1356409.70	40.3062509	-104.3718339	0.00	
2623.00†	18.729	275.355	2546.71	505.79	98.05	-501.62	3314599.96	1356412.29	40.3062591	-104.3719485	0.00	
2723.00†	18.729	275.355	2641.42	537.87	101.05	-533.58	3314567.96	1356414.88	40.3062674	-104.3720631	0.00	
2823.00†	18.729	275.355	2736.12	569.95	104.05	-565.55	3314535.95	1356417.47	40.3062756	-104.3721777	0.00	
2923.00†	18.729	275.355	2830.83	602.03	107.04	-597.52	3314503.95	1356420.06	40.3062838	-104.3722924	0.00	
3023.00†	18.729	275.355	2925.53	634.10	110.04	-629.49	3314471.94	1356422.65	40.3062920	-104.3724070	0.00	
3123.00†	18.729	275.355	3020.24	666.18	113.04	-661.46	3314439.94	1356425.24	40.3063003	-104.3725216	0.00	
3223.00†	18.729	275.355	3114.94	698.26	116.03	-693.43	3314407.94	1356427.83	40.3063085	-104.3726362	0.00	
3323.00†	18.729	275.355	3209.65	730.34	119.03	-725.40	3314375.93	1356430.42	40.3063167	-104.3727509	0.00	
3423.00†	18.729	275.355	3304.35	762.41	122.03	-757.37	3314343.93	1356433.01	40.3063249	-104.3728655	0.00	
3523.00†	18.729	275.355	3399.06	794.49	125.03	-789.34	3314311.93	1356435.60	40.3063332	-104.3729801	0.00	
3623.00†	18.729	275.355	3493.76	826.57	128.02	-821.31	3314279.92	1356438.19	40.3063414	-104.3730947	0.00	
3723.00†	18.729	275.355	3588.47	858.65	131.02	-853.28	3314247.92	1356440.78	40.3063496	-104.3732094	0.00	
3823.00†	18.729	275.355	3683.17	890.72	134.02	-885.25	3314215.92	1356443.36	40.3063578	-104.3733240	0.00	
3923.00†	18.729	275.355	3777.88	922.80	137.01	-917.22	3314183.91	1356445.95	40.3063660	-104.3734386	0.00	
4023.00†	18.729	275.355	3872.58	954.88	140.01	-949.19	3314151.91	1356448.54	40.3063743	-104.3735532	0.00	
4123.00†	18.729	275.355	3967.28	986.96	143.01	-981.16	3314119.90	1356451.13	40.3063825	-104.3736679	0.00	
4223.00†	18.729	275.355	4061.99	1019.03	146.00	-1013.13	3314087.90	1356453.72	40.3063907	-104.3737825	0.00	
4323.00†	18.729	275.355	4156.69	1051.11	149.00	-1045.10	3314055.90	1356456.31	40.3063989	-104.3738971	0.00	
4423.00†	18.729	275.355	4251.40	1083.19	152.00	-1077.07	3314023.89	1356458.90	40.3064072	-104.3740117	0.00	
4523.00†	18.729	275.355	4346.10	1115.27	154.99	-1109.04	3313991.89	1356461.49	40.3064154	-104.3741264	0.00	
4623.00†	18.729	275.355	4440.81	1147.34	157.99	-1141.00	3313959.89	1356464.08	40.3064236	-104.3742410	0.00	
4723.00†	18.729	275.355	4535.51	1179.42	160.99	-1172.97	3313927.88	1356466.67	40.3064318	-104.3743556	0.00	
4823.00†	18.729	275.355	4630.22	1211.50	163.98	-1204.94	3313895.88	1356469.26	40.3064400	-104.3744702	0.00	
4923.00†	18.729	275.355	4724.92	1243.57	166.98	-1236.91	3313863.88	1356471.85	40.3064483	-104.3745849	0.00	
5023.00†	18.729	275.355	4819.63	1275.65	169.98	-1268.88	3313831.87	1356474.44	40.3064565	-104.3746995	0.00	
5123.00†	18.729	275.355	4914.33	1307.73	172.98	-1300.85	3313799.87	1356477.02	40.3064647	-104.3748141	0.00	
5223.00†	18.729	275.355	5009.04	1339.81	175.97	-1332.82	3313767.86	1356479.61	40.3064729	-104.3749287	0.00	
5323.00†	18.729	275.355	5103.74	1371.88	178.97	-1364.79	3313735.86	1356482.20	40.3064812	-104.3750434	0.00	
5423.00†	18.729	275.355	5198.45	1403.96	181.97	-1396.76	3313703.86	1356484.79	40.3064894	-104.3751580	0.00	

Planned Wellpath Report

Flaherty 13-14-3 PWP Rev-A.0

Page 4 of 8

REFERENCE WELLPATH IDENTIFICATION

Operator	CONFLUENCE RESOURCES	Well	Flaherty 13-14-3
Field	WELD COUNTY (NAD83, TRUE NORTH)	API	0512347462
Facility	SEC.18-T04N-R62W	Wellbore	Flaherty 13-14-3 PWB
Slot	SLOT#12 Flaherty 13-14-3 (295'FSL & 1784'FWL,SEC.18)		

WELLPATH DATA (123 stations) † = interpolated, ‡ = extrapolated station

MD [ft]	Inclination [°]	Azimuth [°]	TVD [ft]	Vert Sect [ft]	North [ft]	East [ft]	Grid East [US ft]	Grid North [US ft]	Latitude	Longitude	DLS [°/100ft]	Comments
5523.00†	18.729	275.355	5293.15	1436.04	184.96	-1428.73	3313671.85	1356487.38	40.3064976	-104.3752726	0.00	
5623.00†	18.729	275.355	5387.85	1468.12	187.96	-1460.70	3313639.85	1356489.97	40.3065058	-104.3753872	0.00	
5723.00†	18.729	275.355	5482.56	1500.19	190.96	-1492.67	3313607.85	1356492.56	40.3065140	-104.3755019	0.00	
5823.00†	18.729	275.355	5577.26	1532.27	193.95	-1524.64	3313575.84	1356495.15	40.3065223	-104.3756165	0.00	
5923.00†	18.729	275.355	5671.97	1564.35	196.95	-1556.61	3313543.84	1356497.74	40.3065305	-104.3757311	0.00	
6023.00†	18.729	275.355	5766.67	1596.43	199.95	-1588.58	3313511.84	1356500.33	40.3065387	-104.3758457	0.00	
6123.00†	18.729	275.355	5861.38	1628.50	202.94	-1620.55	3313479.83	1356502.92	40.3065469	-104.3759604	0.00	
6223.00†	18.729	275.355	5956.08	1660.58	205.94	-1652.52	3313447.83	1356505.51	40.3065551	-104.3760750	0.00	
6226.50	18.729	275.355	5959.40	1661.70	206.05	-1653.63	3313446.71	1356505.60	40.3065554	-104.3760790	0.00	KOP
6323.00†	27.397	273.931	6048.10	1699.45	209.02	-1691.28	3313409.03	1356508.09	40.3065636	-104.3762140	9.00	
6423.00†	36.387	273.132	6132.92	1752.22	212.22	-1743.96	3313356.31	1356510.62	40.3065724	-104.3764029	9.00	
6523.00†	45.381	272.615	6208.44	1817.61	215.48	-1809.27	3313290.98	1356513.04	40.3065813	-104.3766370	9.00	
6623.00†	54.376	272.239	6272.82	1894.00	218.69	-1885.59	3313214.62	1356515.29	40.3065901	-104.3769106	9.00	
6723.00†	63.373	271.938	6324.46	1979.51	221.80	-1971.05	3313129.14	1356517.30	40.3065986	-104.3772171	9.00	
6823.00†	72.369	271.682	6362.09	2072.03	224.72	-2063.54	3313036.62	1356519.04	40.3066066	-104.3775487	9.00	
6923.00†	81.367	271.451	6384.78	2169.29	227.37	-2160.79	3312939.35	1356520.46	40.3066139	-104.3778974	9.00	
7018.95	90.000	271.239	6392.00†	2264.86	229.62	-2256.35	3312843.77	1356521.48	40.3066200	-104.3782400	9.00	LANDING
7023.00†	90.000	271.239	6392.00	2268.90	229.70	-2260.40	3312839.72	1356521.52	40.3066202	-104.3782545	0.00	
7123.00†	90.000	271.239	6392.00	2368.86	231.87	-2360.37	3312739.73	1356522.41	40.3066262	-104.3786130	0.00	
7223.00†	90.000	271.239	6392.00	2468.83	234.03	-2460.35	3312639.74	1356523.30	40.3066321	-104.3789714	0.00	
7323.00†	90.000	271.239	6392.00	2568.79	236.19	-2560.33	3312539.75	1356524.19	40.3066380	-104.3793299	0.00	
7423.00†	90.000	271.239	6392.00	2668.75	238.35	-2660.30	3312439.75	1356525.08	40.3066439	-104.3796883	0.00	
7523.00†	90.000	271.239	6392.00	2768.72	240.52	-2760.28	3312339.76	1356525.96	40.3066498	-104.3800468	0.00	
7623.00†	90.000	271.239	6392.00	2868.68	242.68	-2860.26	3312239.77	1356526.85	40.3066557	-104.3804053	0.00	
7723.00†	90.000	271.239	6392.00	2968.64	244.84	-2960.23	3312139.78	1356527.74	40.3066616	-104.3807637	0.00	
7823.00†	90.000	271.239	6392.00	3068.61	247.01	-3060.21	3312039.79	1356528.63	40.3066675	-104.3811222	0.00	
7923.00†	90.000	271.239	6392.00	3168.57	249.17	-3160.19	3311939.80	1356529.52	40.3066734	-104.3814806	0.00	
8023.00†	90.000	271.239	6392.00	3268.53	251.33	-3260.16	3311839.80	1356530.41	40.3066793	-104.3818391	0.00	
8123.00†	90.000	271.239	6392.00	3368.50	253.50	-3360.14	3311739.81	1356531.30	40.3066852	-104.3821976	0.00	
8223.00†	90.000	271.239	6392.00	3468.46	255.66	-3460.12	3311639.82	1356532.19	40.3066911	-104.3825560	0.00	

Planned Wellpath Report

Flaherty 13-14-3 PWP Rev-A.0

Page 5 of 8

REFERENCE WELLPATH IDENTIFICATION

Operator	CONFLUENCE RESOURCES	Well	Flaherty 13-14-3
Field	WELD COUNTY (NAD83, TRUE NORTH)	API	0512347462
Facility	SEC.18-T04N-R62W	Wellbore	Flaherty 13-14-3 PWB
Slot	SLOT#12 Flaherty 13-14-3 (295'FSL & 1784'FWL,SEC.18)		

WELLPATH DATA (123 stations) † = interpolated, ‡ = extrapolated station

MD [ft]	Inclination [°]	Azimuth [°]	TVD [ft]	Vert Sect [ft]	North [ft]	East [ft]	Grid East [US ft]	Grid North [US ft]	Latitude	Longitude	DLS [°/100ft]	Comments
8323.00†	90.000	271.239	6392.00	3568.42	257.82	-3560.09	3311539.83	1356533.08	40.3066970	-104.3829145	0.00	
8423.00†	90.000	271.239	6392.00	3668.39	259.98	-3660.07	3311439.84	1356533.96	40.3067029	-104.3832729	0.00	
8523.00†	90.000	271.239	6392.00	3768.35	262.15	-3760.05	3311339.85	1356534.85	40.3067088	-104.3836314	0.00	
8623.00†	90.000	271.239	6392.00	3868.31	264.31	-3860.02	3311239.86	1356535.74	40.3067147	-104.3839899	0.00	
8723.00†	90.000	271.239	6392.00	3968.28	266.47	-3960.00	3311139.86	1356536.63	40.3067206	-104.3843483	0.00	
8823.00†	90.000	271.239	6392.00	4068.24	268.64	-4059.98	3311039.87	1356537.52	40.3067265	-104.3847068	0.00	
8923.00†	90.000	271.239	6392.00	4168.20	270.80	-4159.95	3310939.88	1356538.41	40.3067324	-104.3850653	0.00	
9023.00†	90.000	271.239	6392.00	4268.17	272.96	-4259.93	3310839.89	1356539.30	40.3067383	-104.3854237	0.00	
9123.00†	90.000	271.239	6392.00	4368.13	275.12	-4359.91	3310739.90	1356540.19	40.3067441	-104.3857822	0.00	
9223.00†	90.000	271.239	6392.00	4468.09	277.29	-4459.88	3310639.91	1356541.08	40.3067500	-104.3861406	0.00	
9323.00†	90.000	271.239	6392.00	4568.06	279.45	-4559.86	3310539.91	1356541.96	40.3067559	-104.3864991	0.00	
9423.00†	90.000	271.239	6392.00	4668.02	281.61	-4659.84	3310439.92	1356542.85	40.3067618	-104.3868576	0.00	
9523.00†	90.000	271.239	6392.00	4767.98	283.78	-4759.81	3310339.93	1356543.74	40.3067677	-104.3872160	0.00	
9623.00†	90.000	271.239	6392.00	4867.95	285.94	-4859.79	3310239.94	1356544.63	40.3067736	-104.3875745	0.00	
9723.00†	90.000	271.239	6392.00	4967.91	288.10	-4959.77	3310139.95	1356545.52	40.3067795	-104.3879329	0.00	
9823.00†	90.000	271.239	6392.00	5067.87	290.26	-5059.74	3310039.96	1356546.41	40.3067853	-104.3882914	0.00	
9923.00†	90.000	271.239	6392.00	5167.84	292.43	-5159.72	3309939.96	1356547.30	40.3067912	-104.3886499	0.00	
10023.00†	90.000	271.239	6392.00	5267.80	294.59	-5259.70	3309839.97	1356548.19	40.3067971	-104.3890083	0.00	
10123.00†	90.000	271.239	6392.00	5367.76	296.75	-5359.67	3309739.98	1356549.08	40.3068030	-104.3893668	0.00	
10223.00†	90.000	271.239	6392.00	5467.73	298.92	-5459.65	3309639.99	1356549.96	40.3068089	-104.3897253	0.00	
10323.00†	90.000	271.239	6392.00	5567.69	301.08	-5559.63	3309540.00	1356550.85	40.3068147	-104.3900837	0.00	
10423.00†	90.000	271.239	6392.00	5667.65	303.24	-5659.60	3309440.01	1356551.74	40.3068206	-104.3904422	0.00	
10523.00†	90.000	271.239	6392.00	5767.62	305.41	-5759.58	3309340.01	1356552.63	40.3068265	-104.3908006	0.00	
10623.00†	90.000	271.239	6392.00	5867.58	307.57	-5859.56	3309240.02	1356553.52	40.3068324	-104.3911591	0.00	
10723.00†	90.000	271.239	6392.00	5967.54	309.73	-5959.53	3309140.03	1356554.41	40.3068382	-104.3915176	0.00	
10823.00†	90.000	271.239	6392.00	6067.51	311.89	-6059.51	3309040.04	1356555.30	40.3068441	-104.3918760	0.00	
10923.00†	90.000	271.239	6392.00	6167.47	314.06	-6159.49	3308940.05	1356556.19	40.3068500	-104.3922345	0.00	
11023.00†	90.000	271.239	6392.00	6267.43	316.22	-6259.46	3308840.06	1356557.08	40.3068558	-104.3925930	0.00	
11123.00†	90.000	271.239	6392.00	6367.40	318.38	-6359.44	3308740.07	1356557.96	40.3068617	-104.3929514	0.00	
11223.00†	90.000	271.239	6392.00	6467.36	320.55	-6459.42	3308640.07	1356558.85	40.3068676	-104.3933099	0.00	

Planned Wellpath Report

Flaherty 13-14-3 PWP Rev-A.0

Page 6 of 8

REFERENCE WELLPATH IDENTIFICATION

Operator	CONFLUENCE RESOURCES	Well	Flaherty 13-14-3
Field	WELD COUNTY (NAD83, TRUE NORTH)	API	0512347462
Facility	SEC.18-T04N-R62W	Wellbore	Flaherty 13-14-3 PWB
Slot	SLOT#12 Flaherty 13-14-3 (295'FSL & 1784'FWL,SEC.18)		

WELLPATH DATA (123 stations) † = interpolated, ‡ = extrapolated station

MD [ft]	Inclination [°]	Azimuth [°]	TVD [ft]	Vert Sect [ft]	North [ft]	East [ft]	Grid East [US ft]	Grid North [US ft]	Latitude	Longitude	DLS [°/100ft]	Comments
11323.00†	90.000	271.239	6392.00	6567.32	322.71	-6559.39	3308540.08	1356559.74	40.3068734	-104.3936683	0.00	
11423.00†	90.000	271.239	6392.00	6667.29	324.87	-6659.37	3308440.09	1356560.63	40.3068793	-104.3940268	0.00	
11435.05	90.000	271.239	6392.00‡	6679.33	325.13	-6671.42	3308428.04	1356560.74	40.3068800	-104.3940700	0.00	TD

HOLE & CASING SECTIONS

- Ref Wellbore: Flaherty 13-14-3 PWB Ref Wellpath: Flaherty 13-14-3 PWP Rev-A.0

String/Diameter	Start MD [ft]	End MD [ft]	Interval [ft]	Start TVD [ft]	End TVD [ft]	Start N/S [ft]	Start E/W [ft]	End N/S [ft]	End E/W [ft]
9.625in Casing Surface	23.00	1676.21	1653.21	23.00	1650.00	0.00	0.00	68.45	-199.25

TARGETS

Name	MD [ft]	TVD [ft]	North [ft]	East [ft]	Grid East [US ft]	Grid North [US ft]	Latitude	Longitude	Shape
SEC.13-T04N-R63W	N/A	0.00	-91.08	-119.93	3314984.00	1356228.05	40.3057400	-104.3705800	polygon
2D Polygon: dimensions not calculated									
SEC.13-T04N-R63W (SB 470')	N/A	0.00	-91.08	-119.93	3314984.00	1356228.05	40.3057400	-104.3705800	polygon
2D Polygon: dimensions not calculated									
2) Flaherty 13-14-3 BHL REV-1 (495'FSL & 470'FWL,SEC.13)	11435.05	6392.00	325.13	-6671.42	3308428.04	1356560.74	40.3068800	-104.3940700	point
1) Flaherty 13-14-3 LP REV-1 (495'FSL & 470'FEL,SEC.13)	7018.95	6392.00	229.62	-2256.35	3312843.77	1356521.48	40.3066200	-104.3782400	point

Planned Wellpath Report

Flaherty 13-14-3 PWP Rev-A.0

Page 7 of 8

REFERENCE WELLPATH IDENTIFICATION

Operator	CONFLUENCE RESOURCES	Well	Flaherty 13-14-3
Field	WELD COUNTY (NAD83, TRUE NORTH)	API	0512347462
Facility	SEC.18-T04N-R62W	Wellbore	Flaherty 13-14-3 PWB
Slot	SLOT#12 Flaherty 13-14-3 (295'FSL & 1784'FWL,SEC.18)		

SURVEY PROGRAM - Ref Wellbore: Flaherty 13-14-3 PWB Ref Wellpath: Flaherty 13-14-3 PWP Rev-A.0

Start MD [ft]	End MD [ft]	Positional Uncertainty Model	Log Name/Comment	Wellbore
23.00	1676.21	BH NaviTrak (2019) (Axial)		Flaherty 13-14-3 PWB
1676.21	11435.05	BH AutoTrak Curve/eXpress (2019) (Short spacing)		Flaherty 13-14-3 PWB

Planned Wellpath Report

Flaherty 13-14-3 PWP Rev-A.0

Page 8 of 8

REFERENCE WELLPATH IDENTIFICATION

Operator	CONFLUENCE RESOURCES	Well	Flaherty 13-14-3
Field	WELD COUNTY (NAD83, TRUE NORTH)	API	0512347462
Facility	SEC.18-T04N-R62W	Wellbore	Flaherty 13-14-3 PWB
Slot	SLOT#12 Flaherty 13-14-3 (295'FSL & 1784'FWL,SEC.18)		

DESIGN COMMENTS

MD [ft]	Inclination [°]	Azimuth [°]	TVD [ft]	Comment
23.00	0.000	290.000	23.00	Tie On
553.00	0.000	290.000	553.00	End of Tangent
1478.00	18.500	290.000	1462.01	End of Build (J)
1528.00	18.500	290.000	1509.43	End of Tangent (J)
1761.43	18.729	275.355	1730.77	3D Arc (XS)
6226.50	18.729	275.355	5959.40	KOP
7018.95	90.000	271.239	6392.00	LANDING
11435.05	90.000	271.239	6392.00	TD