

# CONFLUENCE RESOURCES



Location:	COLORADO	Slot:	SLOT#13 Flaherty 13-13-2 (314'FSL & 1769'FWL,SEC.18)
Field:	WELD COUNTY (NAD83, TRUE NORTH)	Well:	Flaherty 13-13-2
Facility:	SEC.18-T04N-R62W	Wellbore:	Flaherty 13-13-2 PWB
Plot reference wellpath is Flaherty 13-13-2 PWP Rev-A.0		Grid System: NAD83 / Lambert Colorado SP, Northern Zone (501), US feet	
True vertical depths are referenced to Rig (23) (KB)		North Reference: True north	
Reference wellpath measured depths are referenced to Rig (23) (KB)		Scale: True distance	
Rig (23) (KB) to Mean Sea Level: 4586 feet		Coordinates are in feet referenced to Slot	
Mean Sea Level to Mud line (At Slot: SLOT#13 Flaherty 13-13-2 (314'FSL & 1769'FWL,SEC.18)): 0 feet		Depths are in feet	
Offset wellpath MDs are referenced to each path's default MD datum		Created by: pairsrtr on 2021-12-02; Database: WellArchitect:DB	

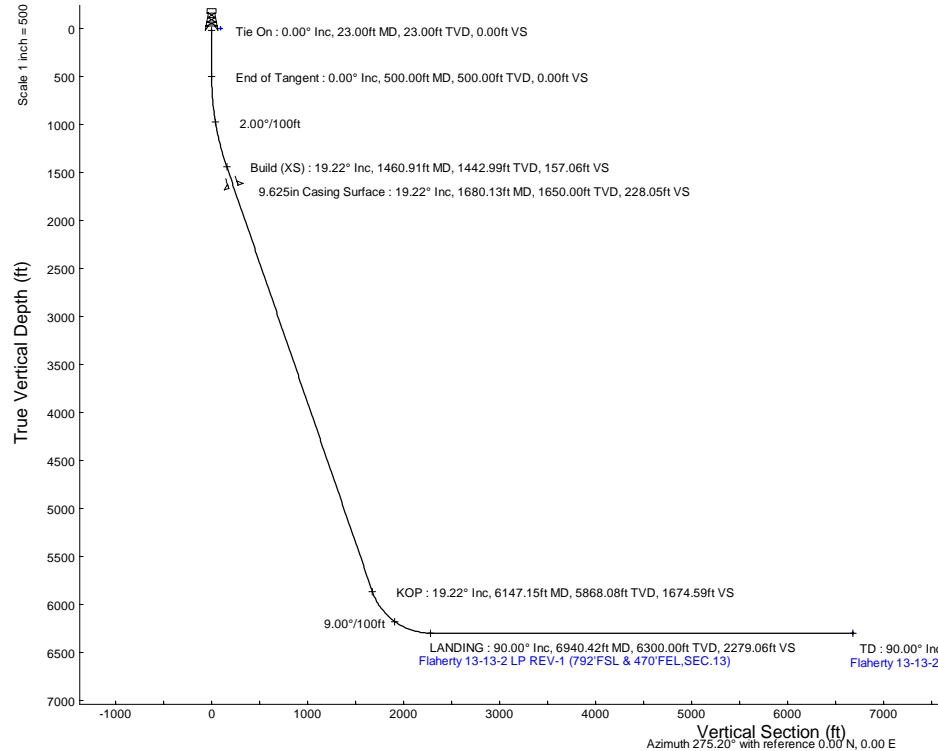
Location Information					
Facility Name		Grid East (US ft)	Grid North (US ft)	Latitude	Longitude
SEC.18-T04N-R62W		3314967.040	1356246.051	40.3057900°	-104.3706400°
Slot		Local N (ft)	Local E (ft)	Grid East (US ft)	Grid North (US ft)
SLOT#13 Flaherty 13-13-2 (314'FSL & 1769'FWL,SEC.18)		91.08	119.93	3315085.796	1356338.644
Rig (23) (KB) to Mud line (At Slot: SLOT#13 Flaherty 13-13-2 (314'FSL & 1769'FWL,SEC.18))				4586ft	
Mean Sea Level to Mud line (At Slot: SLOT#13 Flaherty 13-13-2 (314'FSL & 1769'FWL,SEC.18))				0ft	
Rig (23) (KB) to Mean Sea Level				4586ft	

Hole and Casing Sections										
Name	Start MD (ft)	End MD (ft)	Interval (ft)	Start TVD (ft)	End TVD (ft)	Start Local N (ft)	Start Local E (ft)	End Local N (ft)	End Local E (ft)	Wellbore
9.625in Casing Surface	23.00	1680.13	1657.13	23.00	1650.00	0.00	0.00	62.08	-223.34	Flaherty 13-13-2 PWB

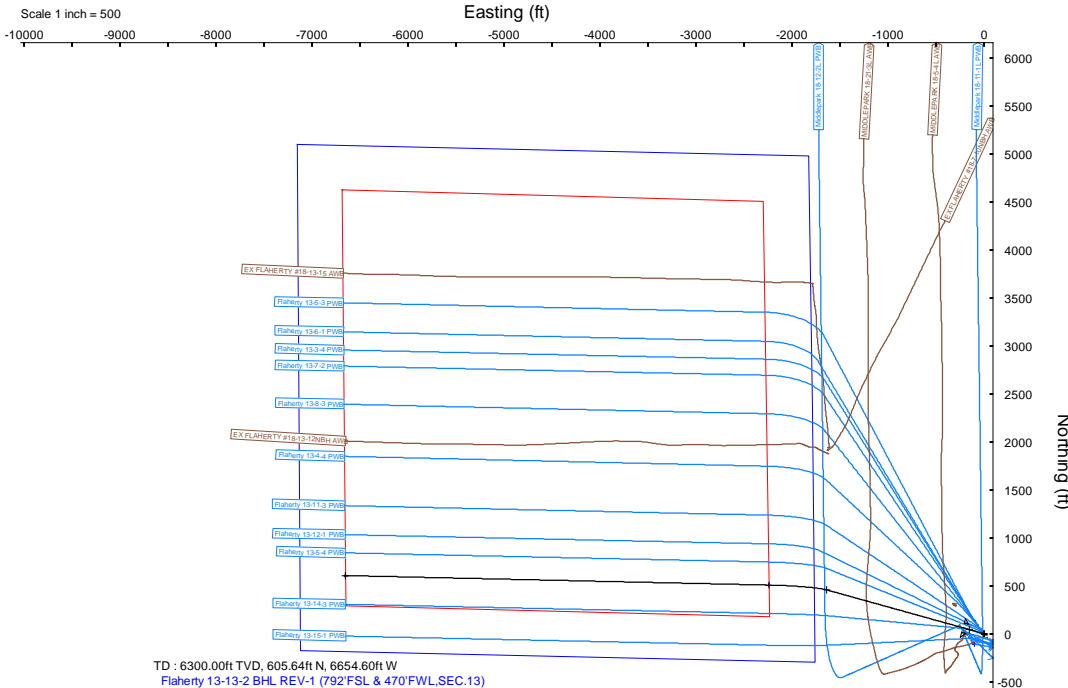
Survey Program					
Start MD (ft)	End MD (ft)	Tool		Model	Log Name/Comment
23.00	1680.13	BH NavTrak (2019)		BH NavTrak (2019) (Axial)	Flaherty 13-13-2 PWB
1680.13	11353.76	BH AutoTrak Curve/xpress (2019)		BH AutoTrak Curve/xpress (2019) (Short spacing)	Flaherty 13-13-2 PWB

Bottom Hole Location									
MD (ft)	Inc (°)	Az (°)	TVD (ft)	Local N (ft)	Local E (ft)	Grid East (US ft)	Grid North (US ft)	Latitude	Longitude
11353.76	90.000	271.287	6300.00	605.64	-6654.60	3308424.32	1356859.43	40.3077000°	-104.3940700°

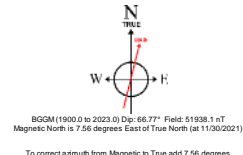
Targets									
Name	MD (ft)	TVD (ft)	Local N (ft)	Local E (ft)	Grid East (US ft)	Grid North (US ft)	Latitude	Longitude	
SEC.13-T04N-R63W	N/A	0.00	-109.29	-103.20	3314984.00	1356228.05	40.3057400°	-104.3705800°	
SEC.13-T04N-R63W (SB 470)	N/A	0.00	-109.29	-103.20	3314984.00	1356228.05	40.3057400°	-104.3705800°	
Flaherty 13-13-2 BHL REV-1 (792'FSL & 470'FWL,SEC.13)	11353.76	6300.00	605.64	-6654.60	3308424.32	1356859.43	40.3077000°	-104.3940700°	
Flaherty 13-13-2 LP REV-1 (792'FSL & 470'FWL,SEC.13)	6940.42	6300.00	506.49	-2242.38	3312837.24	1356816.50	40.3074300°	-104.3782500°	



Well Profile Data								
Design Comment	MD (ft)	Inc (°)	Az (°)	TVD (ft)	Local N (ft)	Local E (ft)	DLS (°/100ft)	VS (ft)
Tie On	23.00	0.000	285.535	23.00	0.00	0.00	0.00	0.00
End of Tangent	500.00	0.000	285.535	500.00	0.00	0.00	0.00	0.00
Build (XS)	1460.91	19.218	285.535	1442.99	42.76	-153.82	2.00	157.06
KOP	6147.15	19.218	285.535	5868.08	455.89	-1640.02	0.00	1674.59
LANDING	6940.42	90.000	271.287	6300.00	506.49	-2242.38	9.00	2279.06
TD	11353.76	90.000	271.287	6300.00	605.64	-6654.60	0.00	6682.11



Flaherty 13-13-2 LP REV-1 (792'FSL & 470'FWL,SEC.13)  
LANDING : 6300.00ft TVD, 506.49ft N, 2242.38ft W  
KOP : 5868.08ft TVD, 455.89ft N, 1640.02ft W  
9.625in Casing Surface : 1650.00ft TVD, 62.08ft N, 223.34ft W  
Tie On : 23.00ft TVD, 0.00ft N, 0.00ft E  
SLOT#13 Flaherty 13-13-2 (314'FSL & 1769'FWL,SEC.18)



# Planned Wellpath Report

Flaherty 13-13-2 PWP Rev-A.0

Page 1 of 6

## REFERENCE WELLPATH IDENTIFICATION

Operator	CONFLUENCE RESOURCES	Well	Flaherty 13-13-2
Field	WELD COUNTY (NAD83, TRUE NORTH)	API	0512347456
Facility	SEC.18-T04N-R62W	Wellbore	Flaherty 13-13-2 PWB
Slot	SLOT#13 Flaherty 13-13-2 (314'FSL & 1769'FWL,SEC.18)		

## REPORT SETUP INFORMATION

Projection System	NAD83 / Lambert Colorado SP, Northern Zone (501), US feet	Software System	WellArchitect® 6.0
North Reference	True	User	Painsetr
Scale	0.999957	Report Generated	12/2/2021 at 12:00:53 PM
Convergence at slot	0.73° East	Database	WellArchitectDB

## WELLPATH LOCATION

	Local coordinates		Grid coordinates		Geographic coordinates	
	North[ft]	East[ft]	Easting[US ft]	Northing[US ft]	Latitude	Longitude
Slot Location	91.08	119.93	3315085.80	1356338.64	40.3060400°	-104.3702100°
Facility Reference Pt			3314967.04	1356246.05	40.3057900°	-104.3706400°
Field Reference Pt			3230456.90	1245096.09	40.0032400°	-104.6773400°

## WELLPATH DATUM

Calculation method	Minimum curvature	Rig (23') (KB) to Facility Vertical Datum	4586.00ft
Horizontal Reference Pt	Slot	Rig (23') (KB) to Mean Sea Level	4586.00ft
Vertical Reference Pt	Rig (23') (KB)	Rig (23') (KB) to Mud Line at Slot (SLOT#13 Flaherty 13-13-2 (314'FSL & 1769'FWL,SEC.18))	4586.00ft
MD Reference Pt	Rig (23') (KB)	Section Origin	N 0.00, E 0.00 ft
Field Vertical Reference	Mean Sea Level	Section Azimuth	275.20°

# Planned Wellpath Report

Flaherty 13-13-2 PWP Rev-A.0

Page 2 of 6

## REFERENCE WELLPATH IDENTIFICATION

Operator	CONFLUENCE RESOURCES	Well	Flaherty 13-13-2
Field	WELD COUNTY (NAD83, TRUE NORTH)	API	0512347456
Facility	SEC.18-T04N-R62W	Wellbore	Flaherty 13-13-2 PWB
Slot	SLOT#13 Flaherty 13-13-2 (314'FSL & 1769'FWL,SEC.18)		

## WELLPATH DATA (120 stations) † = interpolated, ‡ = extrapolated station

MD [ft]	Inclination [°]	Azimuth [°]	TVD [ft]	Vert Sect [ft]	North [ft]	East [ft]	Grid East [US ft]	Grid North [US ft]	Latitude	Longitude	DLS [°/100ft]	Comments
0.00†	0.000	285.535	0.00	0.00	0.00	0.00	3315085.80	1356338.64	40.3060400	-104.3702100	0.00	
23.00	0.000	285.535	23.00	0.00	0.00	0.00	3315085.80	1356338.64	40.3060400	-104.3702100	0.00	Tie On
123.00†	0.000	285.535	123.00	0.00	0.00	0.00	3315085.80	1356338.64	40.3060400	-104.3702100	0.00	
223.00†	0.000	285.535	223.00	0.00	0.00	0.00	3315085.80	1356338.64	40.3060400	-104.3702100	0.00	
323.00†	0.000	285.535	323.00	0.00	0.00	0.00	3315085.80	1356338.64	40.3060400	-104.3702100	0.00	
423.00†	0.000	285.535	423.00	0.00	0.00	0.00	3315085.80	1356338.64	40.3060400	-104.3702100	0.00	
500.00	0.000	285.535	500.00	0.00	0.00	0.00	3315085.80	1356338.64	40.3060400	-104.3702100	0.00	End of Tangent
523.00†	0.460	285.535	523.00	0.09	0.02	-0.09	3315085.71	1356338.67	40.3060401	-104.3702103	2.00	
623.00†	2.460	285.535	622.96	2.60	0.71	-2.54	3315083.24	1356339.32	40.3060419	-104.3702191	2.00	
723.00†	4.460	285.535	722.77	8.53	2.32	-8.36	3315077.41	1356340.86	40.3060464	-104.3702400	2.00	
823.00†	6.460	285.535	822.32	17.89	4.87	-17.53	3315068.21	1356343.29	40.3060534	-104.3702728	2.00	
923.00†	8.460	285.535	921.46	30.67	8.35	-30.03	3315055.66	1356346.61	40.3060629	-104.3703177	2.00	
1023.00†	10.460	285.535	1020.10	46.84	12.75	-45.87	3315039.77	1356350.81	40.3060750	-104.3703745	2.00	
1123.00†	12.460	285.535	1118.10	66.38	18.07	-65.01	3315020.56	1356355.88	40.3060896	-104.3704431	2.00	
1223.00†	14.460	285.535	1215.35	89.28	24.30	-87.43	3314998.06	1356361.83	40.3061067	-104.3705235	2.00	
1323.00†	16.460	285.535	1311.73	115.50	31.44	-113.12	3314972.29	1356368.64	40.3061263	-104.3706156	2.00	
1423.00†	18.460	285.535	1407.11	145.02	39.48	-142.02	3314943.29	1356376.31	40.3061484	-104.3707192	2.00	
1460.91	19.218	285.535	1442.99	157.06	42.76	-153.82	3314931.45	1356379.44	40.3061574	-104.3707615	2.00	Build (XS)
1523.00†	19.218	285.535	1501.62	177.17	48.23	-173.51	3314911.69	1356384.66	40.3061724	-104.3708321	0.00	
1623.00†	19.218	285.535	1596.05	209.55	57.05	-205.22	3314879.87	1356393.07	40.3061966	-104.3709458	0.00	
1723.00†	19.218	285.535	1690.48	241.93	65.86	-236.94	3314848.05	1356401.48	40.3062208	-104.3710595	0.00	
1823.00†	19.218	285.535	1784.90	274.31	74.68	-268.65	3314816.23	1356409.89	40.3062450	-104.3711732	0.00	
1923.00†	19.218	285.535	1879.33	306.70	83.49	-300.36	3314784.40	1356418.30	40.3062692	-104.3712869	0.00	
2023.00†	19.218	285.535	1973.76	339.08	92.31	-332.08	3314752.58	1356426.71	40.3062934	-104.3714006	0.00	
2123.00†	19.218	285.535	2068.19	371.46	101.13	-363.79	3314720.76	1356435.12	40.3063176	-104.3715143	0.00	
2223.00†	19.218	285.535	2162.61	403.84	109.94	-395.51	3314688.94	1356443.53	40.3063418	-104.3716281	0.00	
2323.00†	19.218	285.535	2257.04	436.23	118.76	-427.22	3314657.12	1356451.94	40.3063660	-104.3717418	0.00	
2423.00†	19.218	285.535	2351.47	468.61	127.57	-458.94	3314625.29	1356460.35	40.3063902	-104.3718555	0.00	
2523.00†	19.218	285.535	2445.89	500.99	136.39	-490.65	3314593.47	1356468.76	40.3064144	-104.3719692	0.00	
2623.00†	19.218	285.535	2540.32	533.37	145.20	-522.36	3314561.65	1356477.18	40.3064386	-104.3720829	0.00	

# Planned Wellpath Report

Flaherty 13-13-2 PWP Rev-A.0

Page 3 of 6

## REFERENCE WELLPATH IDENTIFICATION

Operator	CONFLUENCE RESOURCES	Well	Flaherty 13-13-2
Field	WELD COUNTY (NAD83, TRUE NORTH)	API	0512347456
Facility	SEC.18-T04N-R62W	Wellbore	Flaherty 13-13-2 PWB
Slot	SLOT#13 Flaherty 13-13-2 (314'FSL & 1769'FWL,SEC.18)		

## WELLPATH DATA (120 stations) † = interpolated, ‡ = extrapolated station

MD [ft]	Inclination [°]	Azimuth [°]	TVD [ft]	Vert Sect [ft]	North [ft]	East [ft]	Grid East [US ft]	Grid North [US ft]	Latitude	Longitude	DLS [°/100ft]	Comments
2723.00†	19.218	285.535	2634.75	565.76	154.02	-554.08	3314529.83	1356485.59	40.3064628	-104.3721966	0.00	
2823.00†	19.218	285.535	2729.18	598.14	162.84	-585.79	3314498.00	1356494.00	40.3064870	-104.3723103	0.00	
2923.00†	19.218	285.535	2823.60	630.52	171.65	-617.51	3314466.18	1356502.41	40.3065112	-104.3724240	0.00	
3023.00†	19.218	285.535	2918.03	662.90	180.47	-649.22	3314434.36	1356510.82	40.3065354	-104.3725377	0.00	
3123.00†	19.218	285.535	3012.46	695.29	189.28	-680.93	3314402.54	1356519.23	40.3065595	-104.3726514	0.00	
3223.00†	19.218	285.535	3106.89	727.67	198.10	-712.65	3314370.71	1356527.64	40.3065837	-104.3727652	0.00	
3323.00†	19.218	285.535	3201.31	760.05	206.92	-744.36	3314338.89	1356536.05	40.3066079	-104.3728789	0.00	
3423.00†	19.218	285.535	3295.74	792.44	215.73	-776.08	3314307.07	1356544.46	40.3066321	-104.3729926	0.00	
3523.00†	19.218	285.535	3390.17	824.82	224.55	-807.79	3314275.25	1356552.87	40.3066563	-104.3731063	0.00	
3623.00†	19.218	285.535	3484.59	857.20	233.36	-839.50	3314243.42	1356561.28	40.3066805	-104.3732200	0.00	
3723.00†	19.218	285.535	3579.02	889.58	242.18	-871.22	3314211.60	1356569.69	40.3067047	-104.3733337	0.00	
3823.00†	19.218	285.535	3673.45	921.97	250.99	-902.93	3314179.78	1356578.10	40.3067289	-104.3734474	0.00	
3923.00†	19.218	285.535	3767.88	954.35	259.81	-934.65	3314147.96	1356586.51	40.3067531	-104.3735611	0.00	
4023.00†	19.218	285.535	3862.30	986.73	268.63	-966.36	3314116.13	1356594.92	40.3067773	-104.3736748	0.00	
4123.00†	19.218	285.535	3956.73	1019.11	277.44	-998.08	3314084.31	1356603.34	40.3068015	-104.3737885	0.00	
4223.00†	19.218	285.535	4051.16	1051.50	286.26	-1029.79	3314052.49	1356611.75	40.3068257	-104.3739023	0.00	
4323.00†	19.218	285.535	4145.58	1083.88	295.07	-1061.50	3314020.67	1356620.16	40.3068499	-104.3740160	0.00	
4423.00†	19.218	285.535	4240.01	1116.26	303.89	-1093.22	3313988.84	1356628.57	40.3068741	-104.3741297	0.00	
4523.00†	19.218	285.535	4334.44	1148.64	312.70	-1124.93	3313957.02	1356636.98	40.3068983	-104.3742434	0.00	
4623.00†	19.218	285.535	4428.87	1181.03	321.52	-1156.65	3313925.20	1356645.39	40.3069225	-104.3743571	0.00	
4723.00†	19.218	285.535	4523.29	1213.41	330.34	-1188.36	3313893.38	1356653.80	40.3069467	-104.3744708	0.00	
4823.00†	19.218	285.535	4617.72	1245.79	339.15	-1220.07	3313861.55	1356662.21	40.3069709	-104.3745845	0.00	
4923.00†	19.218	285.535	4712.15	1278.17	347.97	-1251.79	3313829.73	1356670.62	40.3069951	-104.3746982	0.00	
5023.00†	19.218	285.535	4806.57	1310.56	356.78	-1283.50	3313797.91	1356679.03	40.3070193	-104.3748119	0.00	
5123.00†	19.218	285.535	4901.00	1342.94	365.60	-1315.22	3313766.09	1356687.44	40.3070435	-104.3749256	0.00	
5223.00†	19.218	285.535	4995.43	1375.32	374.41	-1346.93	3313734.26	1356695.85	40.3070676	-104.3750394	0.00	
5323.00†	19.218	285.535	5089.86	1407.70	383.23	-1378.64	3313702.44	1356704.26	40.3070918	-104.3751531	0.00	
5423.00†	19.218	285.535	5184.28	1440.09	392.05	-1410.36	3313670.62	1356712.67	40.3071160	-104.3752668	0.00	
5523.00†	19.218	285.535	5278.71	1472.47	400.86	-1442.07	3313638.80	1356721.08	40.3071402	-104.3753805	0.00	
5623.00†	19.218	285.535	5373.14	1504.85	409.68	-1473.79	3313606.97	1356729.49	40.3071644	-104.3754942	0.00	

# Planned Wellpath Report

Flaherty 13-13-2 PWP Rev-A.0

Page 4 of 6

## REFERENCE WELLPATH IDENTIFICATION

Operator	CONFLUENCE RESOURCES	Well	Flaherty 13-13-2
Field	WELD COUNTY (NAD83, TRUE NORTH)	API	0512347456
Facility	SEC.18-T04N-R62W	Wellbore	Flaherty 13-13-2 PWB
Slot	SLOT#13 Flaherty 13-13-2 (314'FSL & 1769'FWL,SEC.18)		

## WELLPATH DATA (120 stations) † = interpolated, ‡ = extrapolated station

MD [ft]	Inclination [°]	Azimuth [°]	TVD [ft]	Vert Sect [ft]	North [ft]	East [ft]	Grid East [US ft]	Grid North [US ft]	Latitude	Longitude	DLS [°/100ft]	Comments
5723.00†	19.218	285.535	5467.57	1537.24	418.49	-1505.50	3313575.15	1356737.91	40.3071886	-104.3756079	0.00	
5823.00†	19.218	285.535	5561.99	1569.62	427.31	-1537.22	3313543.33	1356746.32	40.3072128	-104.3757216	0.00	
5923.00†	19.218	285.535	5656.42	1602.00	436.13	-1568.93	3313511.51	1356754.73	40.3072370	-104.3758353	0.00	
6023.00†	19.218	285.535	5750.85	1634.38	444.94	-1600.64	3313479.69	1356763.14	40.3072612	-104.3759491	0.00	
6123.00†	19.218	285.535	5845.27	1666.77	453.76	-1632.36	3313447.86	1356771.55	40.3072854	-104.3760628	0.00	
6147.15	19.218	285.535	5868.08	1674.59	455.89	-1640.02	3313440.18	1356773.58	40.3072912	-104.3760902	0.00	KOP
6223.00†	25.869	281.478	5938.10	1703.35	462.53	-1668.29	3313411.82	1356779.86	40.3073095	-104.3761916	9.00	
6323.00†	34.737	278.395	6024.35	1753.58	471.05	-1717.96	3313362.05	1356787.75	40.3073328	-104.3763697	9.00	
6423.00†	43.653	276.447	6101.78	1816.67	479.10	-1780.57	3313299.35	1356795.00	40.3073549	-104.3765942	9.00	
6523.00†	52.593	275.049	6168.47	1891.04	486.48	-1854.58	3313225.25	1356801.44	40.3073752	-104.3768596	9.00	
6623.00†	61.546	273.952	6222.77	1974.88	493.02	-1938.17	3313141.59	1356806.91	40.3073931	-104.3771593	9.00	
6723.00†	70.506	273.028	6263.37	2066.12	498.55	-2029.28	3313050.42	1356811.28	40.3074083	-104.3774859	9.00	
6823.00†	79.471	272.201	6289.24	2162.51	502.94	-2125.67	3312953.98	1356814.44	40.3074203	-104.3778315	9.00	
6923.00†	88.438	271.421	6299.76	2261.67	506.08	-2224.96	3312854.66	1356816.31	40.3074289	-104.3781875	9.00	
6940.42	90.000	271.287	6300.00†	2279.06	506.49	-2242.38	3312837.24	1356816.50	40.3074300	-104.3782500	9.00	LANDING
7023.00†	90.000	271.287	6300.00	2361.44	508.34	-2324.94	3312754.68	1356817.30	40.3074351	-104.3785460	0.00	
7123.00†	90.000	271.287	6300.00	2461.21	510.59	-2424.91	3312654.69	1356818.28	40.3074412	-104.3789045	0.00	
7223.00†	90.000	271.287	6300.00	2560.97	512.84	-2524.89	3312554.69	1356819.25	40.3074474	-104.3792629	0.00	
7323.00†	90.000	271.287	6300.00	2660.74	515.08	-2624.86	3312454.70	1356820.22	40.3074535	-104.3796214	0.00	
7423.00†	90.000	271.287	6300.00	2760.51	517.33	-2724.83	3312354.71	1356821.19	40.3074596	-104.3799798	0.00	
7523.00†	90.000	271.287	6300.00	2860.28	519.58	-2824.81	3312254.72	1356822.17	40.3074658	-104.3803383	0.00	
7623.00†	90.000	271.287	6300.00	2960.04	521.82	-2924.78	3312154.73	1356823.14	40.3074719	-104.3806967	0.00	
7723.00†	90.000	271.287	6300.00	3059.81	524.07	-3024.76	3312054.74	1356824.11	40.3074780	-104.3810552	0.00	
7823.00†	90.000	271.287	6300.00	3159.58	526.32	-3124.73	3311954.75	1356825.09	40.3074842	-104.3814137	0.00	
7923.00†	90.000	271.287	6300.00	3259.34	528.56	-3224.71	3311854.76	1356826.06	40.3074903	-104.3817721	0.00	
8023.00†	90.000	271.287	6300.00	3359.11	530.81	-3324.68	3311754.77	1356827.03	40.3074964	-104.3821306	0.00	
8123.00†	90.000	271.287	6300.00	3458.88	533.06	-3424.66	3311654.78	1356828.00	40.3075026	-104.3824890	0.00	
8223.00†	90.000	271.287	6300.00	3558.64	535.30	-3524.63	3311554.79	1356828.98	40.3075087	-104.3828475	0.00	
8323.00†	90.000	271.287	6300.00	3658.41	537.55	-3624.61	3311454.80	1356829.95	40.3075148	-104.3832060	0.00	
8423.00†	90.000	271.287	6300.00	3758.18	539.80	-3724.58	3311354.81	1356830.92	40.3075209	-104.3835644	0.00	

# Planned Wellpath Report

Flaherty 13-13-2 PWP Rev-A.0

Page 5 of 6

## REFERENCE WELLPATH IDENTIFICATION

Operator	CONFLUENCE RESOURCES	Well	Flaherty 13-13-2
Field	WELD COUNTY (NAD83, TRUE NORTH)	API	0512347456
Facility	SEC.18-T04N-R62W	Wellbore	Flaherty 13-13-2 PWB
Slot	SLOT#13 Flaherty 13-13-2 (314'FSL & 1769'FWL,SEC.18)		

## WELLPATH DATA (120 stations) † = interpolated, ‡ = extrapolated station

MD [ft]	Inclination [°]	Azimuth [°]	TVD [ft]	Vert Sect [ft]	North [ft]	East [ft]	Grid East [US ft]	Grid North [US ft]	Latitude	Longitude	DLS [°/100ft]	Comments
8523.00†	90.000	271.287	6300.00	3857.94	542.04	-3824.56	3311254.81	1356831.89	40.3075271	-104.3839229	0.00	
8623.00†	90.000	271.287	6300.00	3957.71	544.29	-3924.53	3311154.82	1356832.87	40.3075332	-104.3842813	0.00	
8723.00†	90.000	271.287	6300.00	4057.48	546.54	-4024.51	3311054.83	1356833.84	40.3075393	-104.3846398	0.00	
8823.00†	90.000	271.287	6300.00	4157.25	548.78	-4124.48	3310954.84	1356834.81	40.3075454	-104.3849982	0.00	
8923.00†	90.000	271.287	6300.00	4257.01	551.03	-4224.46	3310854.85	1356835.79	40.3075516	-104.3853567	0.00	
9023.00†	90.000	271.287	6300.00	4356.78	553.28	-4324.43	3310754.86	1356836.76	40.3075577	-104.3857152	0.00	
9123.00†	90.000	271.287	6300.00	4456.55	555.52	-4424.41	3310654.87	1356837.73	40.3075638	-104.3860736	0.00	
9223.00†	90.000	271.287	6300.00	4556.31	557.77	-4524.38	3310554.88	1356838.70	40.3075699	-104.3864321	0.00	
9323.00†	90.000	271.287	6300.00	4656.08	560.02	-4624.36	3310454.89	1356839.68	40.3075760	-104.3867905	0.00	
9423.00†	90.000	271.287	6300.00	4755.85	562.26	-4724.33	3310354.90	1356840.65	40.3075821	-104.3871490	0.00	
9523.00†	90.000	271.287	6300.00	4855.61	564.51	-4824.30	3310254.91	1356841.62	40.3075883	-104.3875075	0.00	
9623.00†	90.000	271.287	6300.00	4955.38	566.76	-4924.28	3310154.92	1356842.60	40.3075944	-104.3878659	0.00	
9723.00†	90.000	271.287	6300.00	5055.15	569.00	-5024.25	3310054.92	1356843.57	40.3076005	-104.3882244	0.00	
9823.00†	90.000	271.287	6300.00	5154.91	571.25	-5124.23	3309954.93	1356844.54	40.3076066	-104.3885828	0.00	
9923.00†	90.000	271.287	6300.00	5254.68	573.50	-5224.20	3309854.94	1356845.51	40.3076127	-104.3889413	0.00	
10023.00†	90.000	271.287	6300.00	5354.45	575.74	-5324.18	3309754.95	1356846.49	40.3076188	-104.3892998	0.00	
10123.00†	90.000	271.287	6300.00	5454.21	577.99	-5424.15	3309654.96	1356847.46	40.3076249	-104.3896582	0.00	
10223.00†	90.000	271.287	6300.00	5553.98	580.24	-5524.13	3309554.97	1356848.43	40.3076310	-104.3900167	0.00	
10323.00†	90.000	271.287	6300.00	5653.75	582.49	-5624.10	3309454.98	1356849.41	40.3076371	-104.3903751	0.00	
10423.00†	90.000	271.287	6300.00	5753.52	584.73	-5724.08	3309354.99	1356850.38	40.3076432	-104.3907336	0.00	
10523.00†	90.000	271.287	6300.00	5853.28	586.98	-5824.05	3309255.00	1356851.35	40.3076493	-104.3910921	0.00	
10623.00†	90.000	271.287	6300.00	5953.05	589.23	-5924.03	3309155.01	1356852.32	40.3076554	-104.3914505	0.00	
10723.00†	90.000	271.287	6300.00	6052.82	591.47	-6024.00	3309055.02	1356853.30	40.3076615	-104.3918090	0.00	
10823.00†	90.000	271.287	6300.00	6152.58	593.72	-6123.98	3308955.03	1356854.27	40.3076676	-104.3921674	0.00	
10923.00†	90.000	271.287	6300.00	6252.35	595.97	-6223.95	3308855.04	1356855.24	40.3076737	-104.3925259	0.00	
11023.00†	90.000	271.287	6300.00	6352.12	598.21	-6323.93	3308755.04	1356856.21	40.3076798	-104.3928844	0.00	
11123.00†	90.000	271.287	6300.00	6451.88	600.46	-6423.90	3308655.05	1356857.19	40.3076859	-104.3932428	0.00	
11223.00†	90.000	271.287	6300.00	6551.65	602.71	-6523.88	3308555.06	1356858.16	40.3076920	-104.3936013	0.00	
11323.00†	90.000	271.287	6300.00	6651.42	604.95	-6623.85	3308455.07	1356859.13	40.3076981	-104.3939597	0.00	
11353.76	90.000	271.287	6300.00‡	6682.11	605.64	-6654.60	3308424.32	1356859.43	40.3077000	-104.3940700	0.00	TD

## HOLE & CASING SECTIONS

- Ref Wellbore: Flaherty 13-13-2 PWB      Ref Wellpath: Flaherty 13-13-2 PWP Rev-A.0

String/Diameter	Start MD [ft]	End MD [ft]	Interval [ft]	Start TVD [ft]	End TVD [ft]	Start N/S [ft]	Start E/W [ft]	End N/S [ft]	End E/W [ft]
9.625in Casing Surface	23.00	1680.13	1657.13	23.00	1650.00	0.00	0.00	62.08	-223.34

## TARGETS

Name	MD [ft]	TVD [ft]	North [ft]	East [ft]	Grid East [US ft]	Grid North [US ft]	Latitude	Longitude	Shape
SEC.13-T04N-R63W	N/A	0.00	-109.29	-103.20	3314984.00	1356228.05	40.3057400	-104.3705800	polygon
2D Polygon: dimensions not calculated									
SEC.13-T04N-R63W (SB 470')	N/A	0.00	-109.29	-103.20	3314984.00	1356228.05	40.3057400	-104.3705800	polygon
2D Polygon: dimensions not calculated									
2) Flaherty 13-13-2 BHL REV-1 (792'FSL & 470'FWL,SEC.13)	11353.76	6300.00	605.64	-6654.60	3308424.32	1356859.43	40.3077000	-104.3940700	point

TARGETS									
Name	MD [ft]	TVD [ft]	North [ft]	East [ft]	Grid East [US ft]	Grid North [US ft]	Latitude	Longitude	Shape
1) Flaherty 13-13-2 LP REV-1 (792'FSL & 470'FEL,SEC.13)	6940.42	6300.00	506.49	-2242.38	3312837.24	1356816.50	40.3074300	-104.3782500	point

SURVEY PROGRAM - Ref Wellbore: Flaherty 13-13-2 PWB					Ref Wellpath: Flaherty 13-13-2 PWP Rev-A.0				
Start MD [ft]	End MD [ft]	Positional Uncertainty Model			Log Name/Comment		Wellbore		
23.00	1680.13	BH NaviTrak (2019) (Axial)					Flaherty 13-13-2 PWB		
1680.13	11353.76	BH AutoTrak Curve/eXpress (2019) (Short spacing)					Flaherty 13-13-2 PWB		



# Planned Wellpath Report

Flaherty 13-13-2 PWP Rev-A.0

Page 6 of 6

## REFERENCE WELLPATH IDENTIFICATION

Operator	CONFLUENCE RESOURCES	Well	Flaherty 13-13-2
Field	WELD COUNTY (NAD83, TRUE NORTH)	API	0512347456
Facility	SEC.18-T04N-R62W	Wellbore	Flaherty 13-13-2 PWB
Slot	SLOT#13 Flaherty 13-13-2 (314'FSL & 1769'FWL,SEC.18)		

## DESIGN COMMENTS

MD [ft]	Inclination [°]	Azimuth [°]	TVD [ft]	Comment
23.00	0.000	285.535	23.00	Tie On
500.00	0.000	285.535	500.00	End of Tangent
1460.91	19.218	285.535	1442.99	Build (XS)
6147.15	19.218	285.535	5868.08	KOP
6940.42	90.000	271.287	6300.00	LANDING
11353.76	90.000	271.287	6300.00	TD