

CONFLUENCE RESOURCES



Location:	COLORADO	Slot:	SLOT#16 Flaherty 13-11-3 (373°FSL & 1723°FWL,SEC.18)
Field:	WELD COUNTY (NAD83, TRUE NORTH)	Well:	Flaherty 13-11-3
Facility:	SEC.18-T04N-R62W	Wellbore:	Flaherty 13-11-3 PWB
Plot reference wellpath is Flaherty 13-11-3 PWP Rev-A-0		Grid System: NAD83 / Lambert Colorado SP, Northern Zone (501), US feet	
True vertical depths are referenced to Rig (23) (KB)		North Reference: True north	
Reference wellpath measured depths are referenced to Rig (23) (KB)		Scale: True distance	
Rig (23) (KB) to Mean Sea Level: 4586 feet		Coordinates are in feet referenced to Slot	
Mean Sea Level to Mud line (At Slot: SLOT#16 Flaherty 13-11-3 (373°FSL & 1723°FWL,SEC.18)): 0 feet		Depths are in feet	
Offset wellpath MDs are referenced to each path's default MD datum		Created by: painsrtr on 2021-12-02; Database: WellArchitect:DB	

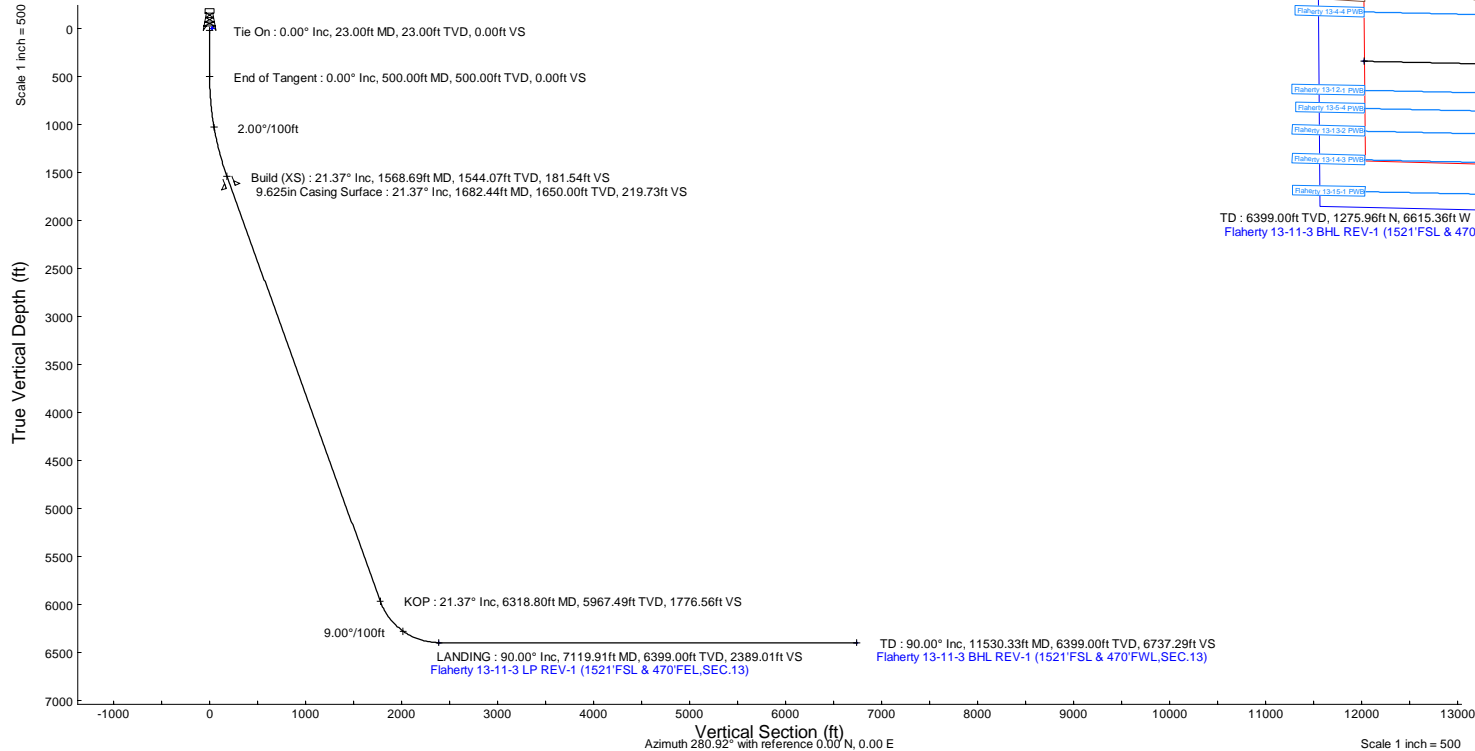
Location Information					
Facility Name		Grid East (US ft)	Grid North (US ft)	Latitude	Longitude
SEC.18-T04N-R62W		3314967.040	1356246.051	40.3057900°	-104.3706400°
Slot		Local N (ft)	Local E (ft)	Grid East (US ft)	Grid North (US ft)
SLOT#16 Flaherty 13-11-3 (373°FSL & 1723°FWL,SEC.18)		149.37	75.31	3315040.433	1356396.357
Rig (23) (KB) to Mud line (At Slot: SLOT#16 Flaherty 13-11-3 (373°FSL & 1723°FWL,SEC.18))				4586ft	
Mean Sea Level to Mud line (At Slot: SLOT#16 Flaherty 13-11-3 (373°FSL & 1723°FWL,SEC.18))				OR	
Rig (23) (KB) to Mean Sea Level				4586ft	

Hole and Casing Sections										
Name	Start MD (ft)	End MD (ft)	Interval (ft)	Start TVD (ft)	End TVD (ft)	Start Local N (ft)	Start Local E (ft)	End Local N (ft)	End Local E (ft)	Wellbore
9.625in Casing Surface	23.00	1682.44	1659.44	23.00	1650.00	0.00	0.00	132.65	-198.20	Flaherty 13-11-3 PWB

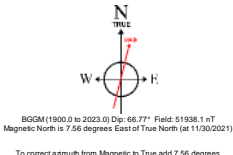
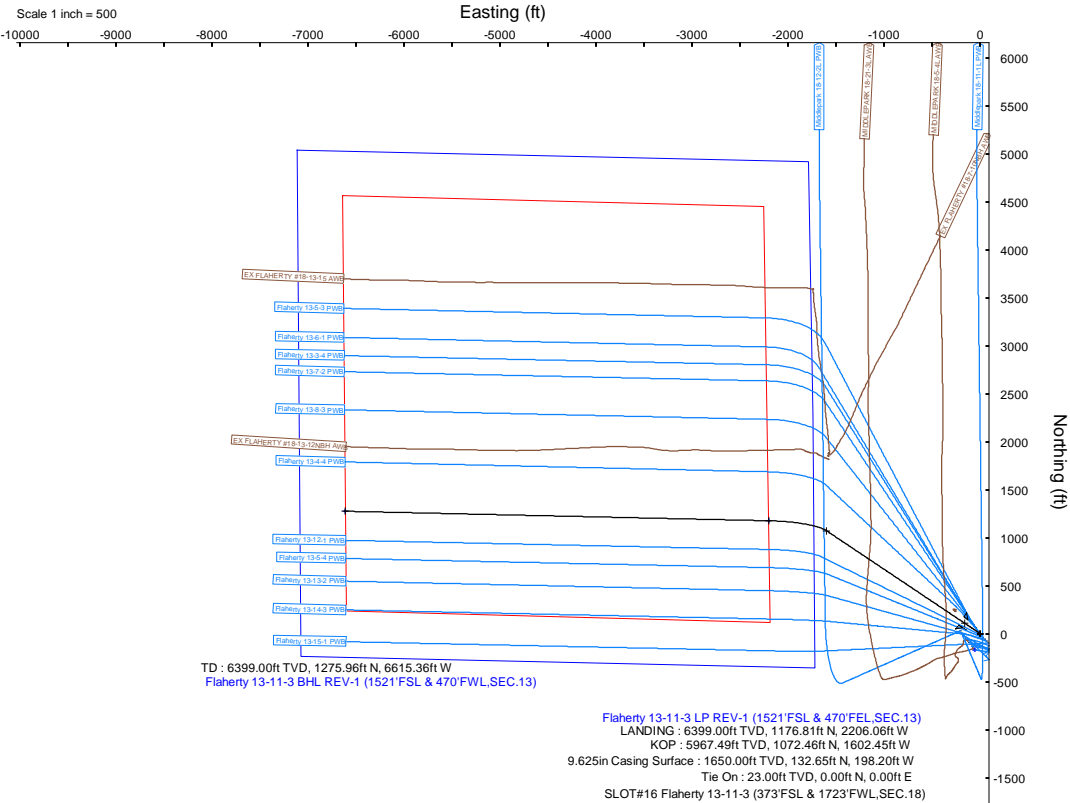
Survey Program					
Start MD (ft)	End MD (ft)	Tool		Model	Log Name/Comment
23.00	1682.44	BH NavTrak (2019)		BH NavTrak (Axial)	Flaherty 13-11-3 PWB
1682.44	11530.33	BH AutoTrak CurveloXpress (2019)		BH AutoTrak CurveloXpress (2019) (Short spacing)	Flaherty 13-11-3 PWB

Bottom Hole Location									
MD (ft)	Inc (°)	Az (°)	TVD (ft)	Local N (ft)	Local E (ft)	Grid East (US ft)	Grid North (US ft)	Latitude	Longitude
11530.33	90.000	271.288	6399.00	1275.96	-6615.36	3308409.65	1357587.89	40.3097000°	-104.3940900°

Targets									
Name	MD (ft)	TVD (ft)	Local N (ft)	Local E (ft)	Grid East (US ft)	Grid North (US ft)	Latitude	Longitude	
SEC.13-T04N-R63W	N/A	0.00	-167.58	-58.57	3314984.00	1356228.05	40.3057400°	-104.3705800°	
SEC.13-T04N-R63W (SB 470)	N/A	0.00	-167.58	-58.57	3314984.00	1356228.05	40.3057400°	-104.3705800°	
Flaherty 13-11-3 BHL REV-1 (1521°FSL & 470°FWL,SEC.13)	11530.33	6399.00	1275.96	-6615.36	3308409.65	1357587.89	40.3097000°	-104.3940900°	
Flaherty 13-11-3 LP REV-1 (1521°FSL & 470°FEL,SEC.13)	7119.91	6399.00	1176.81	-2206.06	3312819.66	1357544.92	40.3094300°	-104.3782800°	



Well Profile Data								
Design Comment	MD (ft)	Inc (°)	Az (°)	TVD (ft)	Local N (ft)	Local E (ft)	DLS (°/100ft)	VS (ft)
Tie On	23.00	0.000	303.793	23.00	0.00	0.00	0.00	0.00
End of Tangent	500.00	0.000	303.793	500.00	0.00	0.00	0.00	0.00
Build (XS)	1568.69	21.374	303.793	1544.07	109.59	-163.74	2.00	181.54
KOP	6318.80	21.374	303.793	5967.49	1072.46	-1602.45	0.00	1776.56
LANDING	7119.91	90.000	271.288	6399.00	1176.81	-2206.06	9.00	2389.01
TD	11530.33	90.000	271.288	6399.00	1275.96	-6615.36	0.00	6737.29



# Planned Wellpath Report

Flaherty 13-11-3 PWP Rev-A.0

Page 1 of 8

## REFERENCE WELLPATH IDENTIFICATION

Operator	CONFLUENCE RESOURCES	Well	Flaherty 13-11-3
Field	WELD COUNTY (NAD83, TRUE NORTH)	API	0512347438
Facility	SEC.18-T04N-R62W	Wellbore	Flaherty 13-11-3 PWB
Slot	SLOT#16 Flaherty 13-11-3 (373'FSL & 1723'FWL,SEC.18)		

## REPORT SETUP INFORMATION

Projection System	NAD83 / Lambert Colorado SP, Northern Zone (501), US feet	Software System	WellArchitect® 6.0
North Reference	True	User	Painsetr
Scale	0.999957	Report Generated	12/2/2021 at 1:50:48 PM
Convergence at slot	0.73° East	Database	WellArchitectDB

## WELLPATH LOCATION

	Local coordinates		Grid coordinates		Geographic coordinates	
	North[ft]	East[ft]	Easting[US ft]	Northing[US ft]	Latitude	Longitude
Slot Location	149.37	75.31	3315040.43	1356396.36	40.3062000°	-104.3703700°
Facility Reference Pt			3314967.04	1356246.05	40.3057900°	-104.3706400°
Field Reference Pt			3230456.90	1245096.09	40.0032400°	-104.6773400°

## WELLPATH DATUM

Calculation method	Minimum curvature	Rig (23') (KB) to Facility Vertical Datum	4586.00ft
Horizontal Reference Pt	Slot	Rig (23') (KB) to Mean Sea Level	4586.00ft
Vertical Reference Pt	Rig (23') (KB)	Rig (23') (KB) to Mud Line at Slot (SLOT#16 Flaherty 13-11-3 (373'FSL & 1723'FWL,SEC.18))	4586.00ft
MD Reference Pt	Rig (23') (KB)	Section Origin	N 0.00, E 0.00 ft
Field Vertical Reference	Mean Sea Level	Section Azimuth	280.92°

# Planned Wellpath Report

Flaherty 13-11-3 PWP Rev-A.0

Page 2 of 8

## REFERENCE WELLPATH IDENTIFICATION

Operator	CONFLUENCE RESOURCES	Well	Flaherty 13-11-3
Field	WELD COUNTY (NAD83, TRUE NORTH)	API	0512347438
Facility	SEC.18-T04N-R62W	Wellbore	Flaherty 13-11-3 PWB
Slot	SLOT#16 Flaherty 13-11-3 (373'FSL & 1723'FWL,SEC.18)		

## WELLPATH DATA (122 stations) † = interpolated, ‡ = extrapolated station

MD [ft]	Inclination [°]	Azimuth [°]	TVD [ft]	Vert Sect [ft]	North [ft]	East [ft]	Grid East [US ft]	Grid North [US ft]	Latitude	Longitude	DLS [°/100ft]	Comments
0.00†	0.000	303.793	0.00	0.00	0.00	0.00	3315040.43	1356396.36	40.3062000	-104.3703700	0.00	
23.00	0.000	303.793	23.00	0.00	0.00	0.00	3315040.43	1356396.36	40.3062000	-104.3703700	0.00	Tie On
123.00†	0.000	303.793	123.00	0.00	0.00	0.00	3315040.43	1356396.36	40.3062000	-104.3703700	0.00	
223.00†	0.000	303.793	223.00	0.00	0.00	0.00	3315040.43	1356396.36	40.3062000	-104.3703700	0.00	
323.00†	0.000	303.793	323.00	0.00	0.00	0.00	3315040.43	1356396.36	40.3062000	-104.3703700	0.00	
423.00†	0.000	303.793	423.00	0.00	0.00	0.00	3315040.43	1356396.36	40.3062000	-104.3703700	0.00	
500.00	0.000	303.793	500.00	0.00	0.00	0.00	3315040.43	1356396.36	40.3062000	-104.3703700	0.00	End of Tangent
523.00†	0.460	303.793	523.00	0.09	0.05	-0.08	3315040.36	1356396.41	40.3062001	-104.3703703	2.00	
623.00†	2.460	303.793	622.96	2.43	1.47	-2.19	3315038.22	1356397.80	40.3062040	-104.3703779	2.00	
723.00†	4.460	303.793	722.77	7.99	4.82	-7.21	3315033.16	1356401.09	40.3062132	-104.3703958	2.00	
823.00†	6.460	303.793	822.32	16.76	10.12	-15.12	3315025.19	1356406.28	40.3062278	-104.3704242	2.00	
923.00†	8.460	303.793	921.46	28.72	17.34	-25.91	3315014.31	1356413.36	40.3062476	-104.3704629	2.00	
1023.00†	10.460	303.793	1020.10	43.86	26.48	-39.56	3315000.54	1356422.33	40.3062727	-104.3705119	2.00	
1123.00†	12.460	303.793	1118.10	62.17	37.53	-56.08	3314983.89	1356433.17	40.3063030	-104.3705711	2.00	
1223.00†	14.460	303.793	1215.35	83.61	50.47	-75.42	3314964.38	1356445.86	40.3063385	-104.3706404	2.00	
1323.00†	16.460	303.793	1311.73	108.17	65.30	-97.57	3314942.04	1356460.41	40.3063792	-104.3707198	2.00	
1423.00†	18.460	303.793	1407.11	135.81	81.99	-122.50	3314916.90	1356476.77	40.3064250	-104.3708092	2.00	
1523.00†	20.460	303.793	1501.40	166.51	100.52	-150.19	3314888.98	1356494.95	40.3064759	-104.3709085	2.00	
1568.69	21.374	303.793	1544.07	181.54	109.59	-163.74	3314875.31	1356503.85	40.3065008	-104.3709571	2.00	Build (XS)
1623.00†	21.374	303.793	1594.65	199.77	120.60	-180.19	3314858.73	1356514.64	40.3065310	-104.3710161	0.00	
1723.00†	21.374	303.793	1687.77	233.35	140.87	-210.48	3314828.18	1356534.53	40.3065867	-104.3711247	0.00	
1823.00†	21.374	303.793	1780.89	266.93	161.14	-240.77	3314797.64	1356554.41	40.3066423	-104.3712333	0.00	
1923.00†	21.374	303.793	1874.02	300.51	181.41	-271.06	3314767.10	1356574.29	40.3066980	-104.3713419	0.00	
2023.00†	21.374	303.793	1967.14	334.09	201.68	-301.35	3314736.56	1356594.17	40.3067536	-104.3714505	0.00	
2123.00†	21.374	303.793	2060.26	367.67	221.95	-331.63	3314706.02	1356614.05	40.3068092	-104.3715591	0.00	
2223.00†	21.374	303.793	2153.38	401.24	242.22	-361.92	3314675.47	1356633.94	40.3068649	-104.3716676	0.00	
2323.00†	21.374	303.793	2246.51	434.82	262.49	-392.21	3314644.93	1356653.82	40.3069205	-104.3717762	0.00	
2423.00†	21.374	303.793	2339.63	468.40	282.76	-422.50	3314614.39	1356673.70	40.3069762	-104.3718848	0.00	
2523.00†	21.374	303.793	2432.75	501.98	303.03	-452.78	3314583.85	1356693.58	40.3070318	-104.3719934	0.00	
2623.00†	21.374	303.793	2525.87	535.56	323.30	-483.07	3314553.30	1356713.47	40.3070874	-104.3721020	0.00	

# Planned Wellpath Report

Flaherty 13-11-3 PWP Rev-A.0

Page 3 of 8

## REFERENCE WELLPATH IDENTIFICATION

Operator	CONFLUENCE RESOURCES	Well	Flaherty 13-11-3
Field	WELD COUNTY (NAD83, TRUE NORTH)	API	0512347438
Facility	SEC.18-T04N-R62W	Wellbore	Flaherty 13-11-3 PWB
Slot	SLOT#16 Flaherty 13-11-3 (373'FSL & 1723'FWL,SEC.18)		

## WELLPATH DATA (122 stations) † = interpolated, ‡ = extrapolated station

MD [ft]	Inclination [°]	Azimuth [°]	TVD [ft]	Vert Sect [ft]	North [ft]	East [ft]	Grid East [US ft]	Grid North [US ft]	Latitude	Longitude	DLS [°/100ft]	Comments
2723.00†	21.374	303.793	2618.99	569.14	343.57	-513.36	3314522.76	1356733.35	40.3071431	-104.3722106	0.00	
2823.00†	21.374	303.793	2712.12	602.72	363.84	-543.65	3314492.22	1356753.23	40.3071987	-104.3723192	0.00	
2923.00†	21.374	303.793	2805.24	636.29	384.11	-573.93	3314461.68	1356773.11	40.3072544	-104.3724278	0.00	
3023.00†	21.374	303.793	2898.36	669.87	404.38	-604.22	3314431.14	1356792.99	40.3073100	-104.3725364	0.00	
3123.00†	21.374	303.793	2991.48	703.45	424.66	-634.51	3314400.59	1356812.88	40.3073656	-104.3726450	0.00	
3223.00†	21.374	303.793	3084.61	737.03	444.93	-664.80	3314370.05	1356832.76	40.3074213	-104.3727536	0.00	
3323.00†	21.374	303.793	3177.73	770.61	465.20	-695.09	3314339.51	1356852.64	40.3074769	-104.3728622	0.00	
3423.00†	21.374	303.793	3270.85	804.19	485.47	-725.37	3314308.97	1356872.52	40.3075325	-104.3729708	0.00	
3523.00†	21.374	303.793	3363.97	837.77	505.74	-755.66	3314278.42	1356892.40	40.3075882	-104.3730794	0.00	
3623.00†	21.374	303.793	3457.10	871.34	526.01	-785.95	3314247.88	1356912.29	40.3076438	-104.3731880	0.00	
3723.00†	21.374	303.793	3550.22	904.92	546.28	-816.24	3314217.34	1356932.17	40.3076995	-104.3732966	0.00	
3823.00†	21.374	303.793	3643.34	938.50	566.55	-846.52	3314186.80	1356952.05	40.3077551	-104.3734052	0.00	
3923.00†	21.374	303.793	3736.46	972.08	586.82	-876.81	3314156.26	1356971.93	40.3078107	-104.3735138	0.00	
4023.00†	21.374	303.793	3829.58	1005.66	607.09	-907.10	3314125.71	1356991.82	40.3078664	-104.3736224	0.00	
4123.00†	21.374	303.793	3922.71	1039.24	627.36	-937.39	3314095.17	1357011.70	40.3079220	-104.3737310	0.00	
4223.00†	21.374	303.793	4015.83	1072.82	647.63	-967.68	3314064.63	1357031.58	40.3079777	-104.3738396	0.00	
4323.00†	21.374	303.793	4108.95	1106.39	667.90	-997.96	3314034.09	1357051.46	40.3080333	-104.3739482	0.00	
4423.00†	21.374	303.793	4202.07	1139.97	688.17	-1028.25	3314003.55	1357071.34	40.3080889	-104.3740568	0.00	
4523.00†	21.374	303.793	4295.20	1173.55	708.44	-1058.54	3313973.00	1357091.23	40.3081446	-104.3741654	0.00	
4623.00†	21.374	303.793	4388.32	1207.13	728.71	-1088.83	3313942.46	1357111.11	40.3082002	-104.3742740	0.00	
4723.00†	21.374	303.793	4481.44	1240.71	748.98	-1119.11	3313911.92	1357130.99	40.3082558	-104.3743826	0.00	
4823.00†	21.374	303.793	4574.56	1274.29	769.25	-1149.40	3313881.38	1357150.87	40.3083115	-104.3744912	0.00	
4923.00†	21.374	303.793	4667.68	1307.87	789.52	-1179.69	3313850.83	1357170.76	40.3083671	-104.3745998	0.00	
5023.00†	21.374	303.793	4760.81	1341.45	809.79	-1209.98	3313820.29	1357190.64	40.3084228	-104.3747084	0.00	
5123.00†	21.374	303.793	4853.93	1375.02	830.07	-1240.27	3313789.75	1357210.52	40.3084784	-104.3748170	0.00	
5223.00†	21.374	303.793	4947.05	1408.60	850.34	-1270.55	3313759.21	1357230.40	40.3085340	-104.3749256	0.00	
5323.00†	21.374	303.793	5040.17	1442.18	870.61	-1300.84	3313728.67	1357250.28	40.3085897	-104.3750342	0.00	
5423.00†	21.374	303.793	5133.30	1475.76	890.88	-1331.13	3313698.12	1357270.17	40.3086453	-104.3751428	0.00	
5523.00†	21.374	303.793	5226.42	1509.34	911.15	-1361.42	3313667.58	1357290.05	40.3087009	-104.3752514	0.00	
5623.00†	21.374	303.793	5319.54	1542.92	931.42	-1391.70	3313637.04	1357309.93	40.3087566	-104.3753600	0.00	

# Planned Wellpath Report

Flaherty 13-11-3 PWP Rev-A.0

Page 4 of 8

## REFERENCE WELLPATH IDENTIFICATION

Operator	CONFLUENCE RESOURCES	Well	Flaherty 13-11-3
Field	WELD COUNTY (NAD83, TRUE NORTH)	API	0512347438
Facility	SEC.18-T04N-R62W	Wellbore	Flaherty 13-11-3 PWB
Slot	SLOT#16 Flaherty 13-11-3 (373'FSL & 1723'FWL,SEC.18)		

## WELLPATH DATA (122 stations) † = interpolated, ‡ = extrapolated station

MD [ft]	Inclination [°]	Azimuth [°]	TVD [ft]	Vert Sect [ft]	North [ft]	East [ft]	Grid East [US ft]	Grid North [US ft]	Latitude	Longitude	DLS [°/100ft]	Comments
5723.00†	21.374	303.793	5412.66	1576.50	951.69	-1421.99	3313606.50	1357329.81	40.3088122	-104.3754686	0.00	
5823.00†	21.374	303.793	5505.79	1610.07	971.96	-1452.28	3313575.96	1357349.69	40.3088679	-104.3755772	0.00	
5923.00†	21.374	303.793	5598.91	1643.65	992.23	-1482.57	3313545.41	1357369.58	40.3089235	-104.3756858	0.00	
6023.00†	21.374	303.793	5692.03	1677.23	1012.50	-1512.86	3313514.87	1357389.46	40.3089791	-104.3757944	0.00	
6123.00†	21.374	303.793	5785.15	1710.81	1032.77	-1543.14	3313484.33	1357409.34	40.3090348	-104.3759030	0.00	
6223.00†	21.374	303.793	5878.27	1744.39	1053.04	-1573.43	3313453.79	1357429.22	40.3090904	-104.3760116	0.00	
6318.80	21.374	303.793	5967.49	1776.56	1072.46	-1602.45	3313424.53	1357448.27	40.3091437	-104.3761157	0.00	KOP
6323.00†	21.686	303.216	5971.39	1777.98	1073.31	-1603.73	3313423.23	1357449.10	40.3091460	-104.3761203	9.00	
6423.00†	29.568	293.046	6061.53	1819.28	1093.13	-1641.97	3313384.74	1357468.44	40.3092004	-104.3762574	9.00	
6523.00†	37.917	286.952	6144.63	1874.07	1111.79	-1694.17	3313332.31	1357486.42	40.3092516	-104.3764446	9.00	
6623.00†	46.480	282.809	6218.66	1941.00	1128.82	-1759.05	3313267.22	1357502.63	40.3092984	-104.3766772	9.00	
6723.00†	55.155	279.707	6281.79	2018.42	1143.81	-1835.01	3313191.08	1357516.65	40.3093395	-104.3769496	9.00	
6823.00†	63.893	277.204	6332.46	2104.43	1156.38	-1920.18	3313105.77	1357528.13	40.3093740	-104.3772549	9.00	
6923.00†	72.669	275.051	6369.43	2196.91	1166.23	-2012.46	3313013.37	1357536.81	40.3094010	-104.3775858	9.00	
7023.00†	81.466	273.097	6391.79	2293.57	1173.12	-2109.58	3312916.18	1357542.46	40.3094199	-104.3779341	9.00	
7119.91	90.000	271.288	6399.00†	2389.01	1176.81	-2206.06	3312819.66	1357544.92	40.3094300	-104.3782800	9.00	LANDING
7123.00†	90.000	271.288	6399.00	2392.05	1176.88	-2209.14	3312816.58	1357544.95	40.3094302	-104.3782911	0.00	
7223.00†	90.000	271.288	6399.00	2490.64	1179.13	-2309.12	3312716.59	1357545.92	40.3094363	-104.3786495	0.00	
7323.00†	90.000	271.288	6399.00	2589.23	1181.37	-2409.09	3312616.60	1357546.89	40.3094425	-104.3790080	0.00	
7423.00†	90.000	271.288	6399.00	2687.82	1183.62	-2509.07	3312516.60	1357547.87	40.3094486	-104.3793665	0.00	
7523.00†	90.000	271.288	6399.00	2786.41	1185.87	-2609.04	3312416.61	1357548.84	40.3094548	-104.3797249	0.00	
7623.00†	90.000	271.288	6399.00	2885.00	1188.12	-2709.02	3312316.62	1357549.82	40.3094609	-104.3800834	0.00	
7723.00†	90.000	271.288	6399.00	2983.60	1190.37	-2808.99	3312216.63	1357550.79	40.3094670	-104.3804419	0.00	
7823.00†	90.000	271.288	6399.00	3082.19	1192.61	-2908.97	3312116.64	1357551.77	40.3094732	-104.3808003	0.00	
7923.00†	90.000	271.288	6399.00	3180.78	1194.86	-3008.94	3312016.65	1357552.74	40.3094793	-104.3811588	0.00	
8023.00†	90.000	271.288	6399.00	3279.37	1197.11	-3108.92	3311916.66	1357553.71	40.3094855	-104.3815173	0.00	
8123.00†	90.000	271.288	6399.00	3377.96	1199.36	-3208.89	3311816.67	1357554.69	40.3094916	-104.3818757	0.00	
8223.00†	90.000	271.288	6399.00	3476.55	1201.61	-3308.86	3311716.68	1357555.66	40.3094977	-104.3822342	0.00	
8323.00†	90.000	271.288	6399.00	3575.14	1203.85	-3408.84	3311616.69	1357556.64	40.3095039	-104.3825927	0.00	
8423.00†	90.000	271.288	6399.00	3673.73	1206.10	-3508.81	3311516.70	1357557.61	40.3095100	-104.3829511	0.00	

# Planned Wellpath Report

Flaherty 13-11-3 PWP Rev-A.0

Page 5 of 8

## REFERENCE WELLPATH IDENTIFICATION

Operator	CONFLUENCE RESOURCES	Well	Flaherty 13-11-3
Field	WELD COUNTY (NAD83, TRUE NORTH)	API	0512347438
Facility	SEC.18-T04N-R62W	Wellbore	Flaherty 13-11-3 PWB
Slot	SLOT#16 Flaherty 13-11-3 (373'FSL & 1723'FWL,SEC.18)		

## WELLPATH DATA (122 stations) † = interpolated, ‡ = extrapolated station

MD [ft]	Inclination [°]	Azimuth [°]	TVD [ft]	Vert Sect [ft]	North [ft]	East [ft]	Grid East [US ft]	Grid North [US ft]	Latitude	Longitude	DLS [°/100ft]	Comments
8523.00†	90.000	271.288	6399.00	3772.33	1208.35	-3608.79	3311416.71	1357558.59	40.3095161	-104.3833096	0.00	
8623.00†	90.000	271.288	6399.00	3870.92	1210.60	-3708.76	3311316.72	1357559.56	40.3095223	-104.3836681	0.00	
8723.00†	90.000	271.288	6399.00	3969.51	1212.85	-3808.74	3311216.72	1357560.53	40.3095284	-104.3840266	0.00	
8823.00†	90.000	271.288	6399.00	4068.10	1215.09	-3908.71	3311116.73	1357561.51	40.3095345	-104.3843850	0.00	
8923.00†	90.000	271.288	6399.00	4166.69	1217.34	-4008.69	3311016.74	1357562.48	40.3095406	-104.3847435	0.00	
9023.00†	90.000	271.288	6399.00	4265.28	1219.59	-4108.66	3310916.75	1357563.46	40.3095468	-104.3851020	0.00	
9123.00†	90.000	271.288	6399.00	4363.87	1221.84	-4208.64	3310816.76	1357564.43	40.3095529	-104.3854604	0.00	
9223.00†	90.000	271.288	6399.00	4462.46	1224.09	-4308.61	3310716.77	1357565.41	40.3095590	-104.3858189	0.00	
9323.00†	90.000	271.288	6399.00	4561.05	1226.33	-4408.59	3310616.78	1357566.38	40.3095651	-104.3861774	0.00	
9423.00†	90.000	271.288	6399.00	4659.65	1228.58	-4508.56	3310516.79	1357567.35	40.3095713	-104.3865358	0.00	
9523.00†	90.000	271.288	6399.00	4758.24	1230.83	-4608.54	3310416.80	1357568.33	40.3095774	-104.3868943	0.00	
9623.00†	90.000	271.288	6399.00	4856.83	1233.08	-4708.51	3310316.81	1357569.30	40.3095835	-104.3872528	0.00	
9723.00†	90.000	271.288	6399.00	4955.42	1235.33	-4808.49	3310216.82	1357570.28	40.3095896	-104.3876113	0.00	
9823.00†	90.000	271.288	6399.00	5054.01	1237.57	-4908.46	3310116.83	1357571.25	40.3095957	-104.3879697	0.00	
9923.00†	90.000	271.288	6399.00	5152.60	1239.82	-5008.44	3310016.84	1357572.23	40.3096019	-104.3883282	0.00	
10023.00†	90.000	271.288	6399.00	5251.19	1242.07	-5108.41	3309916.84	1357573.20	40.3096080	-104.3886867	0.00	
10123.00†	90.000	271.288	6399.00	5349.78	1244.32	-5208.38	3309816.85	1357574.17	40.3096141	-104.3890451	0.00	
10223.00†	90.000	271.288	6399.00	5448.38	1246.57	-5308.36	3309716.86	1357575.15	40.3096202	-104.3894036	0.00	
10323.00†	90.000	271.288	6399.00	5546.97	1248.82	-5408.33	3309616.87	1357576.12	40.3096263	-104.3897621	0.00	
10423.00†	90.000	271.288	6399.00	5645.56	1251.06	-5508.31	3309516.88	1357577.10	40.3096324	-104.3901205	0.00	
10523.00†	90.000	271.288	6399.00	5744.15	1253.31	-5608.28	3309416.89	1357578.07	40.3096385	-104.3904790	0.00	
10623.00†	90.000	271.288	6399.00	5842.74	1255.56	-5708.26	3309316.90	1357579.05	40.3096446	-104.3908375	0.00	
10723.00†	90.000	271.288	6399.00	5941.33	1257.81	-5808.23	3309216.91	1357580.02	40.3096507	-104.3911960	0.00	
10823.00†	90.000	271.288	6399.00	6039.92	1260.06	-5908.21	3309116.92	1357580.99	40.3096568	-104.3915544	0.00	
10923.00†	90.000	271.288	6399.00	6138.51	1262.30	-6008.18	3309016.93	1357581.97	40.3096629	-104.3919129	0.00	
11023.00†	90.000	271.288	6399.00	6237.10	1264.55	-6108.16	3308916.94	1357582.94	40.3096691	-104.3922714	0.00	
11123.00†	90.000	271.288	6399.00	6335.70	1266.80	-6208.13	3308816.95	1357583.92	40.3096752	-104.3926298	0.00	
11223.00†	90.000	271.288	6399.00	6434.29	1269.05	-6308.11	3308716.96	1357584.89	40.3096813	-104.3929883	0.00	
11323.00†	90.000	271.288	6399.00	6532.88	1271.30	-6408.08	3308616.96	1357585.87	40.3096874	-104.3933468	0.00	
11423.00†	90.000	271.288	6399.00	6631.47	1273.54	-6508.06	3308516.97	1357586.84	40.3096935	-104.3937052	0.00	

### REFERENCE WELLPATH IDENTIFICATION

Operator	CONFLUENCE RESOURCES	Well	Flaherty 13-11-3
Field	WELD COUNTY (NAD83, TRUE NORTH)	API	0512347438
Facility	SEC.18-T04N-R62W	Wellbore	Flaherty 13-11-3 PWB
Slot	SLOT#16 Flaherty 13-11-3 (373'FSL & 1723'FWL,SEC.18)		

### WELLPATH DATA (122 stations) † = interpolated, ‡ = extrapolated station

MD [ft]	Inclination [°]	Azimuth [°]	TVD [ft]	Vert Sect [ft]	North [ft]	East [ft]	Grid East [US ft]	Grid North [US ft]	Latitude	Longitude	DLS [°/100ft]	Comments
11523.00†	90.000	271.288	6399.00	6730.06	1275.79	-6608.03	3308416.98	1357587.81	40.3096996	-104.3940637	0.00	
11530.33	90.000	271.288	6399.00 <sup>2</sup>	6737.29	1275.96	-6615.36	3308409.65	1357587.89	40.3097000	-104.3940900	0.00	TD

### HOLE & CASING SECTIONS

- Ref Wellbore: Flaherty 13-11-3 PWB      Ref Wellpath: Flaherty 13-11-3 PWP Rev-A.0

String/Diameter	Start MD [ft]	End MD [ft]	Interval [ft]	Start TVD [ft]	End TVD [ft]	Start N/S [ft]	Start E/W [ft]	End N/S [ft]	End E/W [ft]
9.625in Casing Surface	23.00	1682.44	1659.44	23.00	1650.00	0.00	0.00	132.65	-198.20

### TARGETS

Name	MD [ft]	TVD [ft]	North [ft]	East [ft]	Grid East [US ft]	Grid North [US ft]	Latitude	Longitude	Shape
SEC.13-T04N-R63W	N/A	0.00	-167.58	-58.57	3314984.00	1356228.05	40.3057400	-104.3705800	polygon
2D Polygon: dimensions not calculated									
SEC.13-T04N-R63W (SB 470')	N/A	0.00	-167.58	-58.57	3314984.00	1356228.05	40.3057400	-104.3705800	polygon
2D Polygon: dimensions not calculated									
2) Flaherty 13-11-3 BHL REV-1 (1521'FSL & 470'FWL,SEC.13)	11530.33	6399.00	1275.96	-6615.36	3308409.65	1357587.89	40.3097000	-104.3940900	point
1) Flaherty 13-11-3 LP REV-1 (1521'FSL & 470'FEL,SEC.13)	7119.91	6399.00	1176.81	-2206.06	3312819.66	1357544.92	40.3094300	-104.3782800	point

# Planned Wellpath Report

Flaherty 13-11-3 PWP Rev-A.0

Page 7 of 8

## REFERENCE WELLPATH IDENTIFICATION

Operator	CONFLUENCE RESOURCES	Well	Flaherty 13-11-3
Field	WELD COUNTY (NAD83, TRUE NORTH)	API	0512347438
Facility	SEC.18-T04N-R62W	Wellbore	Flaherty 13-11-3 PWB
Slot	SLOT#16 Flaherty 13-11-3 (373'FSL & 1723'FWL,SEC.18)		

## SURVEY PROGRAM - Ref Wellbore: Flaherty 13-11-3 PWB Ref Wellpath: Flaherty 13-11-3 PWP Rev-A.0

Start MD [ft]	End MD [ft]	Positional Uncertainty Model	Log Name/Comment	Wellbore
23.00	1682.44	BH NaviTrak (2019) (Axial)		Flaherty 13-11-3 PWB
1682.44	11530.33	BH AutoTrak Curve/eXpress (2019) (Short spacing)		Flaherty 13-11-3 PWB

# Planned Wellpath Report

Flaherty 13-11-3 PWP Rev-A.0

Page 8 of 8

## REFERENCE WELLPATH IDENTIFICATION

Operator	CONFLUENCE RESOURCES	Well	Flaherty 13-11-3
Field	WELD COUNTY (NAD83, TRUE NORTH)	API	0512347438
Facility	SEC.18-T04N-R62W	Wellbore	Flaherty 13-11-3 PWB
Slot	SLOT#16 Flaherty 13-11-3 (373'FSL & 1723'FWL,SEC.18)		

## DESIGN COMMENTS

MD [ft]	Inclination [°]	Azimuth [°]	TVD [ft]	Comment
23.00	0.000	303.793	23.00	Tie On
500.00	0.000	303.793	500.00	End of Tangent
1568.69	21.374	303.793	1544.07	Build (XS)
6318.80	21.374	303.793	5967.49	KOP
7119.91	90.000	271.288	6399.00	LANDING
11530.33	90.000	271.288	6399.00	TD